

726 MALTBY AVE

NORFOLK, VIRGINIA 23504

MLS 10606022

BRAMBLETON

**IT'S TIME TO MAKE
YOUR MOVE TO MALTBY**



757-524-0417

JENNIFER@JENNIFERDAWNREALESTATE.COM

JENNIFERDAWNREALESTATE.COM

HOWARD HANNA
REAL ESTATE SERVICES

TRUST ✂ COMMUNITY ✂ CONNECTION



LET'S MAKE MALTBY *YOUR* HOME

A Cozy, Connected Haven in Norfolk

There's something special about a home that feels like home the moment you walk in.

Soft natural light filters through wide windows, catching the warmth of the hardwood floors and the golden tones of each thoughtfully designed space. From the first step inside, 726 Maltby Avenue feels instantly inviting — a place where comfort and connection come naturally.

Tucked into the heart of Norfolk's Brambleton neighborhood, this home offers a perfect blend of style and function. The open-concept layout flows seamlessly from living to dining to kitchen, creating a space designed for everyday ease and effortless entertaining.

The kitchen is a true centerpiece — refreshed cabinetry, sleek granite countertops, and stainless steel appliances make it ideal for both quiet morning moments and lively gatherings. Around the corner, the spacious primary suite offers a peaceful retreat, complete with vaulted ceilings and flexible space for work or relaxation. Two additional bedrooms and updated baths provide versatility for guests, family, or creative projects.

Step outside and you'll find a private, fenced backyard — a calm outdoor escape perfect for morning coffee, casual evenings under the stars, or a weekend barbecue with friends. Every inch of this home was designed for real life, balancing warmth, practicality, and that unmistakable feeling of home.

What's Nearby

- Neighborhood parks and green spaces just minutes away
- Quick access to downtown Norfolk, local cafés, and shopping
- Convenient commute to Norfolk Naval Base and Little Creek
- A close-knit community that values connection and charm

This isn't just a house — it's a place where life slows down in all the right ways. Where light, laughter, and a sense of belonging fill every corner.

726 Maltby Avenue is ready for its next chapter.

Are you ready to make it yours?



726 Maltby
Avenue

NORFOLK

It's time to Make your
Move to Maltby



726 Maltby Avenue

Make Your Move to Maltby

Square Footage

1,611 sq ft

Bedrooms

3

Bathrooms

2 Full | 1 Half

Year Built

2005

Lot Size

0.08 acres

Features

Spacious Kitchen

Fresh Paint

Newer HVAC

Newer Deck and Privacy

Fence

Amenities Nearby

Parks

Green Spaces

Neighborhood Highlights

Located in Norfolk's Brambleton neighborhood, 726 Maltby Avenue offers the best of both connection and convenience. Here, suburban comfort meets city energy — with cafés, parks, shopping, and downtown just minutes away. Daily errands are effortless, and weekend plans come together with ease.

Residents enjoy nearby green spaces, dog parks, and waterfront trails, creating the perfect blend of outdoor recreation and urban accessibility. Whether heading to Harbor Park, exploring the Elizabeth River Trail, or enjoying a local restaurant along Granby Street, life here is all about balance.

Military families appreciate the quick commute to nearby bases, while professionals value the proximity to work, schools, and entertainment. Around Maltby Avenue, you'll find a community that's walkable, well-connected, and rich with Norfolk charm.

Brambleton isn't just a neighborhood — it's a lifestyle of connection, comfort, and community.



View and Save 726 Maltby Ave.



726 MALTBY AVENUE TAKE A LOOK AROUND...



View and Save 726 Maltby Ave.



LET'S MAKE MALTBY YOUR HOME

TRUST • COMMUNITY • CONNECTION



JENNIFER D HOLDS THE KEY
757-524-0417
JENNIFERDAWNREALESTATE.COM

HOWARD HANNA
REAL ESTATE SERVICES



EXPECT EXCEPTIONAL



It's Time to Make Your Move to Maltby

Welcome to 726 Maltby Avenue — where connection, comfort, and convenience come together in the heart of Norfolk's Brambleton neighborhood.

This thoughtfully designed home offers an open-concept layout filled with natural light and everyday ease. From the inviting front porch to the bright living area, each space is crafted for gathering, relaxing, and creating lasting memories.

Press play to experience it for yourself. Then, schedule your private tour and take the next step toward home.



IT'S TIME TO MAKE YOUR MOVE TO MALTBY



A WARM WELCOME AWAITS



STEP INSIDE
&
INSTANTLY
FEEL AT
HOME

The moment you open the door, you're greeted by light, warmth, and the unmistakable sense of home. This welcoming entryway offers both charm and purpose — a thoughtfully designed space that invites guests to linger and loved ones to return. Whether you're stepping out to start your day or coming back to unwind, every detail here says “welcome home.”



MAKE MALTBY YOUR HOME



A KITCHEN THAT GATHERS HEARTS AND STORIES



The heart of every home beats here. Framed by rich wood cabinetry and gleaming granite counters, this kitchen blends warmth with everyday ease. Stainless steel appliances, generous prep space, and a smart open layout make cooking, conversation, and connection all flow together naturally. From quiet mornings to shared meals, it's a place where food — and laughter — are always served warm.

MAKE MALTBY YOUR HOME



THE HEART OF THE HOME



WHERE GATHERINGS BEGIN
& MEMORIES ARE MADE

A kitchen designed for connection and creativity. Timeless wood cabinetry pairs beautifully with sleek granite countertops and stainless appliances, creating a space that feels both classic and current. Sunlight fills the room through generous windows, enhancing the warmth that makes this kitchen the true heart of the home. Whether you're preparing a family meal, catching up with friends, or simply savoring a quiet morning, every detail invites you to linger just a little longer.



MAKE MALTBY YOUR HOME

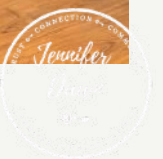


Designed for Comfort,
Styled for Living.

Every detail in this open-concept space blends warmth with intention. The dining area bridges the heart of the home and the living room, inviting easy flow for gatherings and everyday moments alike. Sunlight, space, and thoughtful design come together to create a home that feels as effortless as it looks.



MAKE MALTBY YOUR HOME



WHERE LIGHT AND LIFE COME TOGETHER



Step inside to a space designed for connection and comfort. Sunlight dances across gleaming floors, highlighting an open living area that flows effortlessly into the dining space and kitchen beyond. Whether you're sharing morning coffee, hosting friends, or unwinding after a long day, this inviting room captures the heart of home—warm, bright, and perfectly balanced for modern living.

MAKE MALTBY YOUR HOME



A SPACE TO GATHER, GROW, AND STAY AWHILE



MAKE MALTBY YOUR HOME



CRAFTED FOR CONNECTION. DESIGNED FOR REAL LIFE.



This living room invites laughter, quiet moments, and everything in between. Natural light streams through wide windows, softening the space with a golden glow that feels like home. The open design welcomes easy conversation, while the cozy fireplace and comfortable seating make it the perfect backdrop for movie nights, morning coffee, or catching up with loved ones.

MAKE MALTBY YOUR HOME



A PRIVATE ESCAPE WITH ENDLESS POSSIBILITIES.

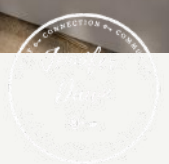
A PRIVATE RETREAT DESIGNED FOR COMFORT & POSSIBILITY



Your own serene getaway awaits. This spacious primary suite blends comfort and style with soaring ceilings, soft natural light, and a layout that adapts to your life. There's room here for rest, reflection, and renewal — whether it's a cozy movie night, a quiet morning coffee, or a peaceful workspace tucked beneath the light-filled dormer. A retreat that truly feels like yours.



MAKE MALTBY YOUR HOME



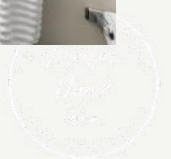
PEACEFUL GUEST SPACES



Designed with both comfort and flexibility in mind, this area of the home offers two inviting guest bedrooms, a convenient half bath downstairs, and a full bath upstairs. Each room is filled with soft natural light and plush carpeting that enhances the sense of calm and ease. Whether hosting guests, setting up a home office, or creating a cozy retreat for family, these thoughtfully designed spaces adapt beautifully to your needs — a peaceful extension of the home's welcoming spirit.



MAKE MALTBY YOUR HOME



AN OUTDOOR ESCAPE MADE FOR RELAXATION & ENTERTAINING



STEP OUTSIDE & SAVOR THE MOMENT

A seamless extension of the home, this private backyard invites you to slow down and enjoy life outdoors. The cozy patio seating and open green space create the perfect setting for morning coffee, weekend cookouts, or evenings under the stars. Whether entertaining friends or simply unwinding after a long day, this outdoor retreat offers comfort, privacy, and a touch of everyday serenity — all just beyond your back door.

MAKE MALTBY YOUR HOME



A HOME THAT WELCOMES WITH CHARACTER & HEART



Framed by timeless architecture and thoughtful design, this charming residence makes a lasting first impression. The inviting front porch and graceful lines reflect warmth and care, while mature trees and a peaceful setting create a sense of belonging from the very first glance. Whether greeting neighbors from the steps or savoring quiet mornings in the fresh air, this home embodies the perfect blend of comfort, connection, and classic curb appeal.

MAKE MALTBY YOUR HOME





MAKE MALTBY YOUR HOME





MAKE MALTBY YOUR HOME

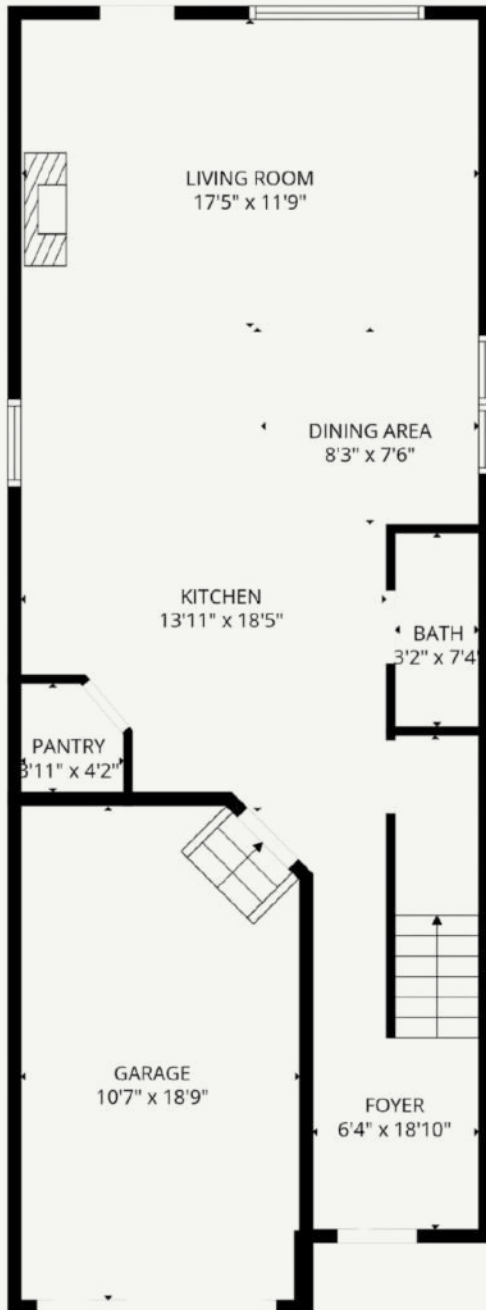


Floor Plans

The title 'Floor Plans' is rendered in a large, elegant serif font. The word 'Floor' is in a lighter, brownish-gold color, while 'Plans' is in a darker, charcoal grey. The text is set against a background of soft, blended watercolor washes in shades of cream, light brown, and pale blue. Intricate, dark brown calligraphic flourishes and scrollwork are artfully arranged around the text, particularly above 'Floor' and below 'Plans', adding a classic and sophisticated feel to the design.

726 Maltby Avenue, Norfolk, Virginia 23504

Combined Floor Plan

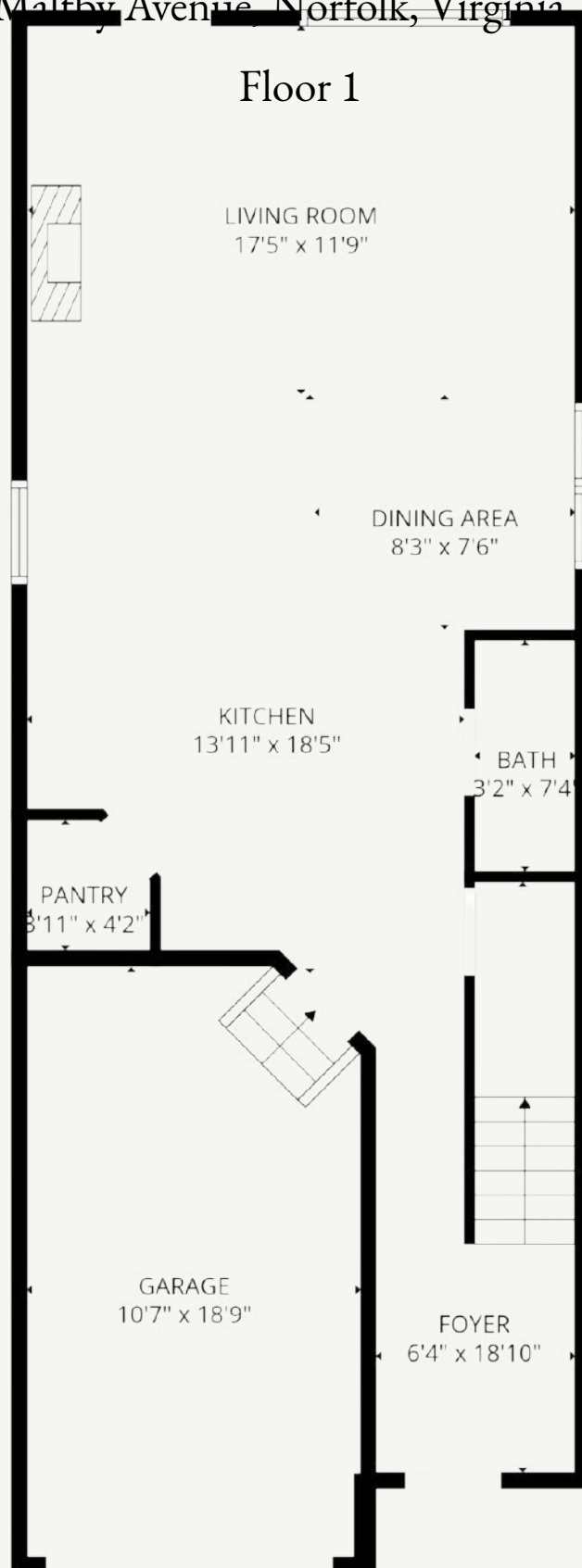


FLOOR 1



FLOOR 2

726 Maltby Avenue, Norfolk, Virginia 23504



726 Maltby Avenue, Norfolk, Virginia 23504

Floor 2

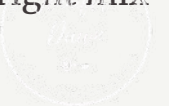




GET TO KNOW THE NEIGHBORHOOD

Brambleton offers the best of Norfolk living — Living on Maltby Avenue means being close to everything — shops, cafés, parks, and downtown are all within easy reach. Brambleton's central location makes everyday errands simple and weekend plans effortless. Whether you're out exploring the city or enjoying quiet time at home, 726 Maltby Avenue offers the right mix of connection, comfort, and convenience.

MAKE MALTBY YOUR HOME



Neighborhood Eats and Treats



FOOD Report

This home is located near a large number of diverse and moderately priced restaurants, offering an exceptional variety of cuisines.



within 5 miles

\$

(Under \$10):

The number of fast-food restaurants, delis, & casual eateries that fall into this price category is very high

\$\$

(\$11-30)

This category includes majority of casual dining restaurants, chain restaurants, & local favorites.

\$\$\$

(\$31-60)

This category represents upscale casual & fine dining experiences

\$\$\$\$

(Over \$60)

The number of restaurants in the high-end dining category is small

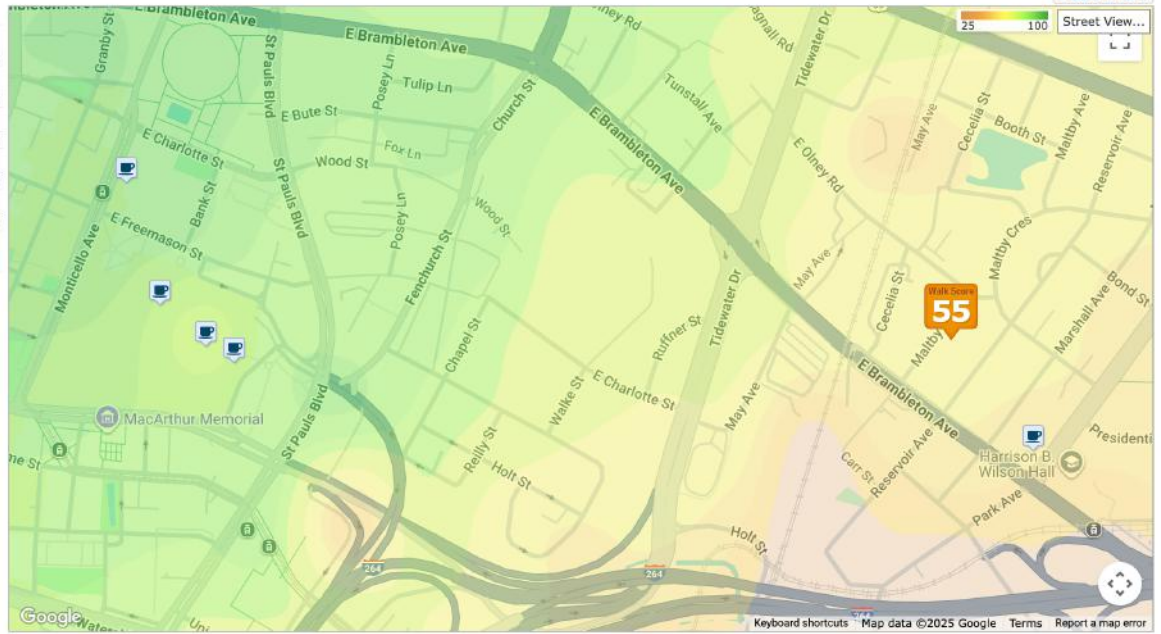
Good Eats BY CATEGORY

AMERICAN	20
FAST FOOD	19
ASIAN	17
VEGAN & VEGETARIAN	9
PIZZA	14
INTERNATIONAL	10
SEAFOOD	9
MEXICAN	7
CAFES, COFFEE & TEA	8
OTHER	14

What's Nearby

Coffee

- 7-Eleven**
1510 East Brambleton Avenue .2mi
- Cafe**
301 Cumberland Street .8mi
- Mrs. Fields**
300 Monticello Avenue .8mi
- Teavana**
300 Monticello Ave # 215 .9mi
- 7-Eleven**
435 Monticello Avenue .9mi
- [More Coffee](#)



A Taste of Community – Dining & Coffee Nearby

Living near 726 Maltby Avenue means being surrounded by Norfolk's local flavor — from corner cafés and casual eateries to family-run spots and national favorites. Whether it's grabbing a latte on your way to work, meeting friends for lunch, or unwinding over dinner, you'll find plenty of good eats within a few minutes of home.

With downtown just a quick drive away and restaurants stretching along Church Street, Ballentine Boulevard, and Granby Street, this location keeps everyday convenience close. It's more than a list of dining options — it's a connected, creative community where good food and friendly faces are part of the neighborhood rhythm.

What's Nearby

Restaurants

- Chick-fil-A**
700 Park Avenue .2mi
- Burger King**
1000 Tidewater Drive .4mi
- Golden City**
1002 Park Avenue .4mi
- Blue Ocean Seafood**
1000 Park Avenue #A Norfolk, VA5mi
- Subway**
720 Church Street .5mi
- Chinatown Restaurant**
720 Church St .5mi
- [More Restaurants](#)



726 Maltby Avenue | Norfolk



Jennifer Dawn
JENNIFER D HOLDS THE KEY

Popular



Outdoor Report



Dog Park
BEA ARTHUR DOG PARK

1.6
miles



Park
Looney Toons Play Port

0.9
miles



park
Shoop Park

2.5
miles



Lake
LAKE CHRISTOPHER

6.6
miles

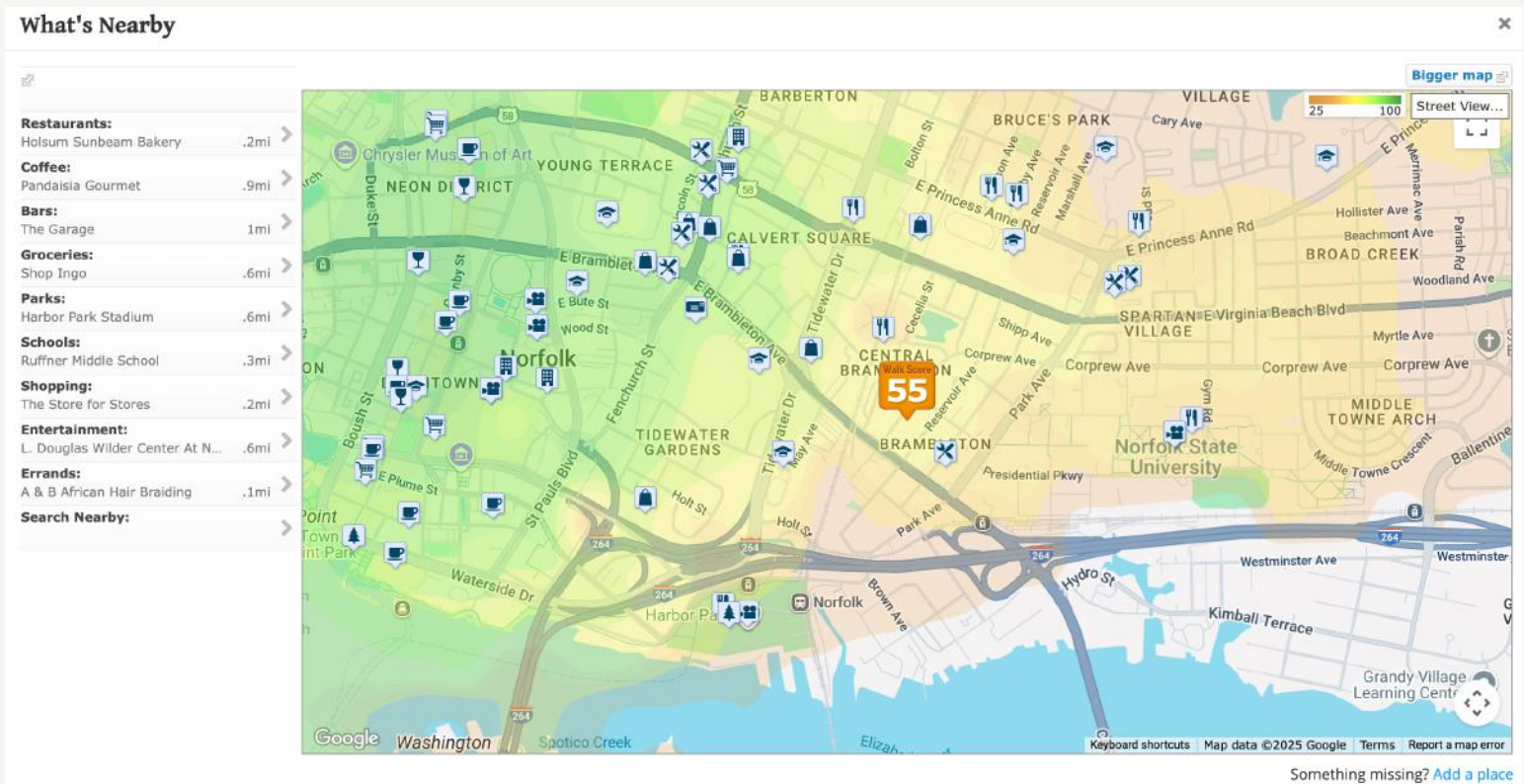
This home is located near a **variety**
of outdoor activity options



within 10 miles



Information derived from a third party source and is subject to change and accuracy not guaranteed.



Embrace the Outdoors – Parks & Green Spaces Nearby

Living on Maltby Avenue puts you right in the heart of Norfolk's connected green network — with community parks, walking paths, and open spaces all within easy reach. Whether you're heading to Harbor Park for a ballgame and river views, stretching your legs along the Elizabeth River Trail, or relaxing under the trees at Lafayette Park, there's always somewhere nearby to unwind.

With well-kept neighborhood parks just a few minutes away, it's simple to slip outside for a breath of fresh air or a bit of quiet time. From playgrounds and dog-friendly spaces to waterfront strolls and weekend picnics, this area makes outdoor living part of everyday life.

726 Maltby Avenue isn't just close to nature — it's part of a community that values connection, movement, and balance. Around here, outdoor spaces aren't just places to go — they're where neighbors meet, moments happen, and Norfolk's easy charm shines through.





School Report



Chesterfield Academy
Elementary School
Assigned

4
Rating



Ruffner
Middle School
Assigned

3
Rating



Booker T Washington
High School
Assigned

3
Rating



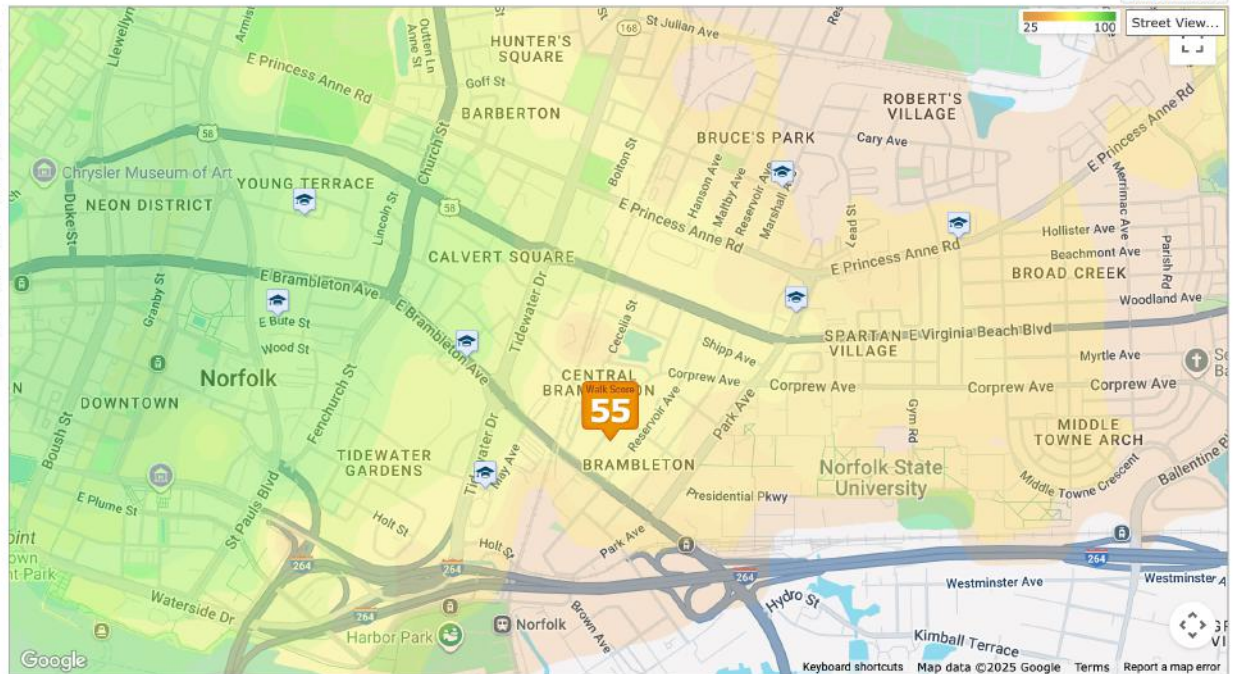
The assigned schools
are *average* for the
area. There are also 32
private schools within 5
miles



What's Nearby

Schools

Ruffner Middle School	.3mi
610 May Ave	
Tidewater Park Elementary School	.3mi
1045 East Brambleton Ave	
B. T. Washington High School	.5mi
1111 Park Ave	
Jacox Elementary School	.6mi
1300 Marshall Ave	
First Baptist Ready Academy Christ...	.7mi
418 E Bute St	
P. B. Young Senior Elementary Sch...	.8mi
543 East Olney Rd	
Dreamkeepers Academy at J.J. Rob...	.8mi
2600 East Princess Anne Rd	

[More Schools](#)

 Something missing? [Add a place](#)

Education & Community Connection

Living on Maltby Avenue means having access to a variety of educational resources and learning environments throughout Norfolk. From early education to higher learning, the area offers a strong mix of opportunities that reflect the city's ongoing commitment to growth, creativity, and community connection.

With multiple schools and educational programs just a short distance away, residents enjoy the ease of well-connected learning options within their own neighborhood. Whether attending nearby schools, engaging in local enrichment programs, or taking part in community-based initiatives, this area supports lifelong learning in every stage of life.

726 Maltby Avenue is part of a community that values opportunity — where access to quality education and neighborhood connection go hand in hand. It's about more than proximity — it's about the relationships, support, and shared experiences that help a neighborhood thrive.

A home is more than a place to live — it's about being part of a community that invests in learning, growth, and connection.

726 Maltby Avenue | Norfolk



Jennifer Dawn
JENNIFER D HOLDS THE KEY

Area Report

Very Convenient



This home is in a **very convenient** area. Some daily errands in this location **require a car** and most major services are within **1** mile.

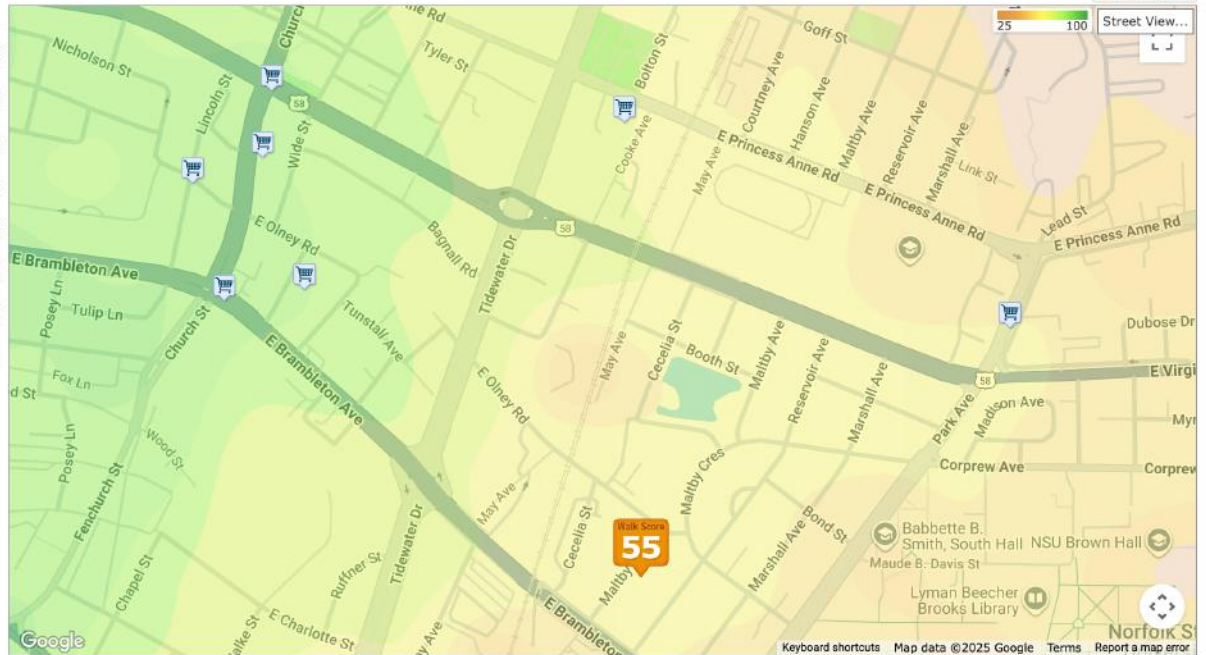
Information derived from a third party source and is subject to change and accuracy not guaranteed.



What's Nearby

Groceries

Park Avenue Market	.5mi
1024 Park Avenue	
Save-A-Lot	.5mi
720 Church Street	
Va-Bel	.5mi
1021 East Princess Anne Road	
Super Blue Green Algae Store	.5mi
Tobacco Plus	.6mi
820 Church Street	
Watergate	.6mi
637 East Olney Road	
Shop N Go	.6mi
711 E Virginia Beach Blvd	
More Groceries	

Something missing? [Add a place](#)

Everyday Convenience, Just Minutes Away

Living on Maltby Avenue means daily life just flows easier. Shopping, dining, and essential services are all close by — everything you need to keep routines simple and spontaneous moments possible.

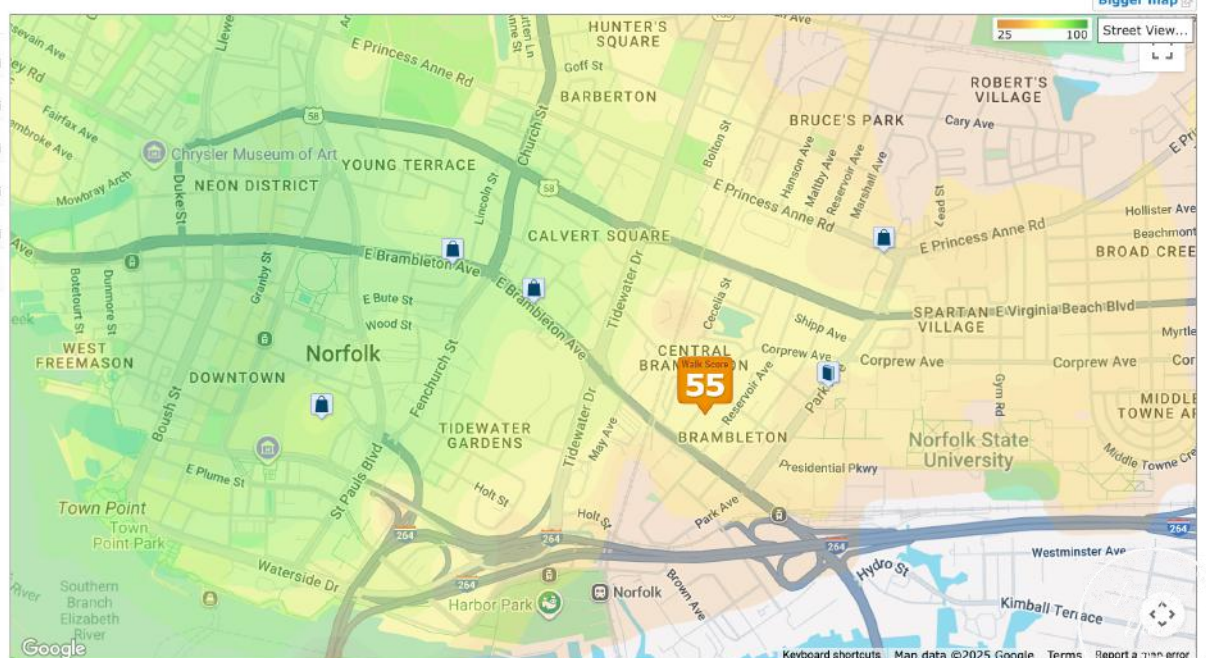
Whether you're grabbing groceries, swinging by the post office, or stopping in for a quick coffee, you'll find that errands fit naturally into your day. With major roads and local favorites just minutes from home, convenience here isn't about rushing — it's about access that makes life feel lighter.

From weekend stops to weekday must-haves, this neighborhood keeps you connected to what matters most.

What's Nearby

Shopping

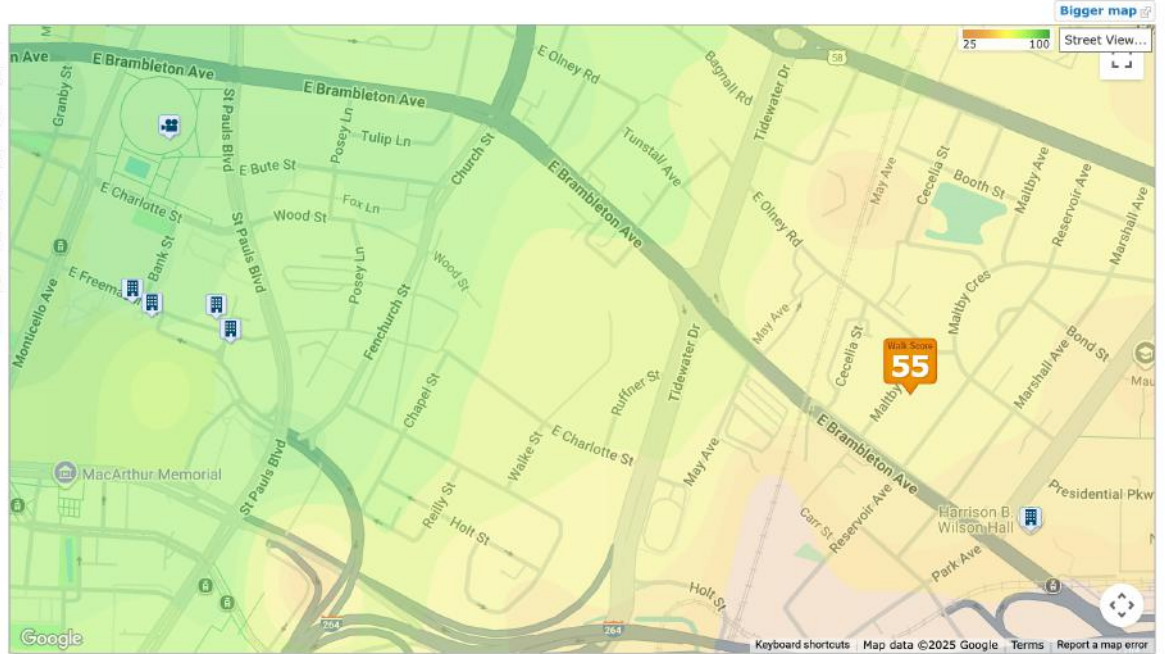
Barnes & Noble Booksellers	.3mi
700 Park Ave	
Family Dollar Store	.4mi
720 Church Street	
Tyrant MMA	.5mi
1539-1551 East Princess Anne Rd...	
Norfolk Wholesale Floral Corporation	.6mi
601 E Brambleton Ave	
Nordstrom MacArthur Center	.8mi
301 Cumberland Street	
More Shopping	

Something missing? [Add a place](#)

What's Nearby

Entertainment

African Art Gallery	700 Park Avenue	.2mi
Norfolk History Museum	601 East Freemason Street	.7mi
satellite realty	444 East Freemason Street	.8mi
Norfolk Police Museum	401 East Freemason Street	.8mi
Scope Arena	201 East Brambleton Avenue	.9mi
Moses Myers House	323 East Freemason Street	.9mi
More Entertainment		



Entertainment & Everyday Convenience Close to Home

Living on Maltby Avenue means having the best of both worlds — everyday errands and weekend fun, all within easy reach. Need to send a package, swing by the pharmacy, or squeeze in a little self-care? It's all close enough to fit naturally into your day.

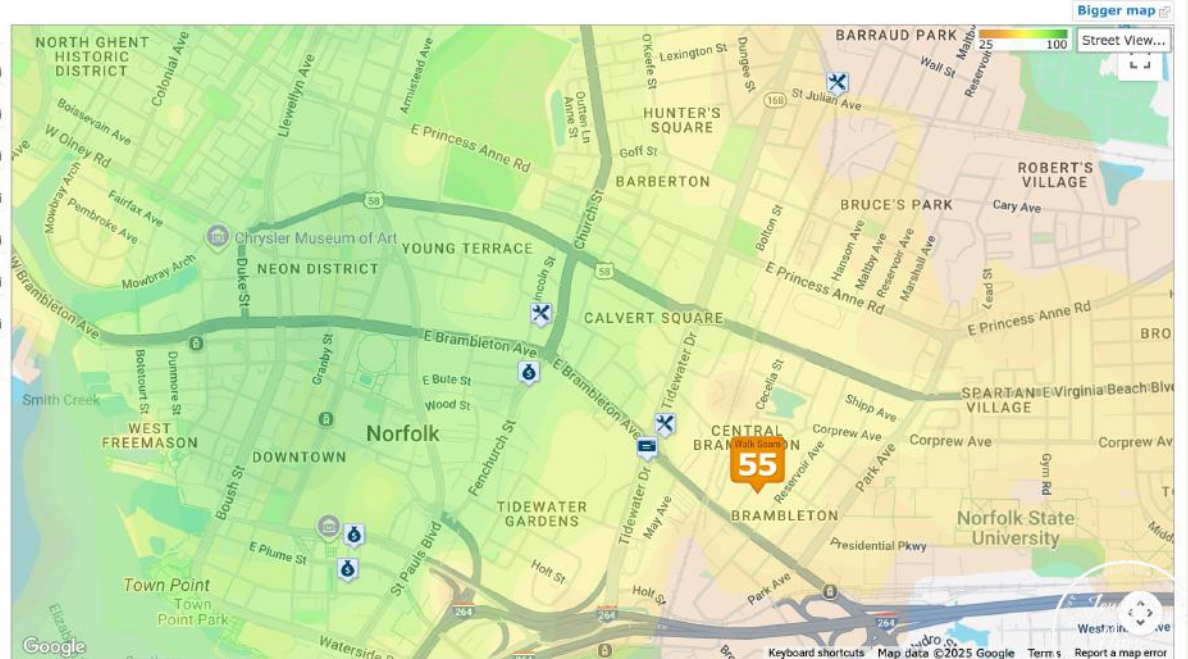
And when it's time to slow down or have a little fun, this neighborhood makes it easy to recharge. From local art spaces and community events to casual dining and live entertainment downtown, there's always something happening just a few minutes away.

726 Maltby Avenue keeps life simple and well-connected

What's Nearby

Errands

The Store for Stores	700 Tidewater Drive	.2mi
United States Postal Service	660 Tidewater Dr	.2mi
Norfolk Va-Postal Credit Union Inc	600 Church St	.5mi
Goldberg Hardware	711 Church Street	.6mi
Mc Bride Lumber	1100 Saint Julian Avenue	.9mi
Bank of Hampton Roads	500 E Plume St Ste 800	.9mi
BB&T	500 E Main St	.9mi
More Errands		



Walk Score®



726 Maltby Avenue

Brambleton, Norfolk, 23504

Commute to **downtown norfolk**

3 min 16 min 5 min 23 min [View Routes](#)

Commute to **downtown virginia beach**

42 min 50 min 60+ min 60+ min [View Routes](#)

Commute to **virginia beach oceanfront**

41 min 43 min 60+ min 60+ min [View Routes](#)

CAR DEPENDENT WALK SCORE 55

Some errands can be
accomplished on foot.

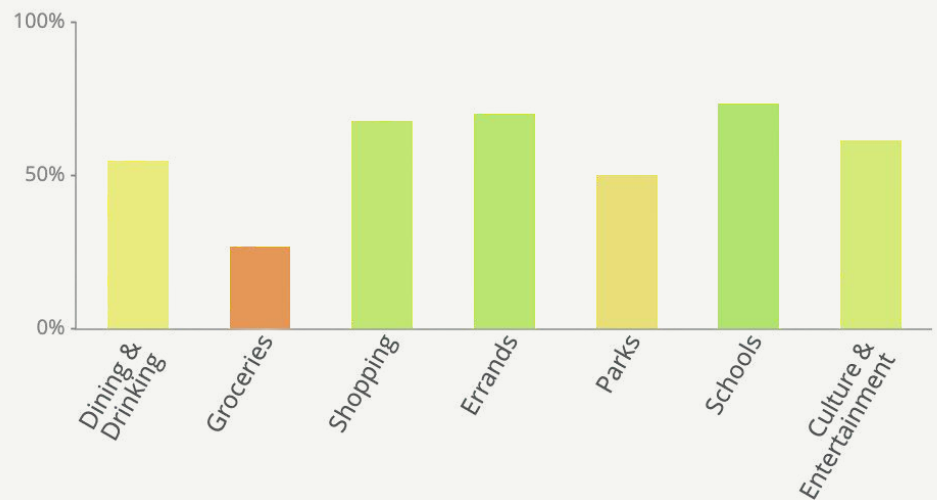
SOMEWHAT BIKEABLE BIKE SCORE 50

Some bike infrastructure.

MINIMAL TRANSIT TRANSIT SCORE 72

Transit is convenient for most
trips.

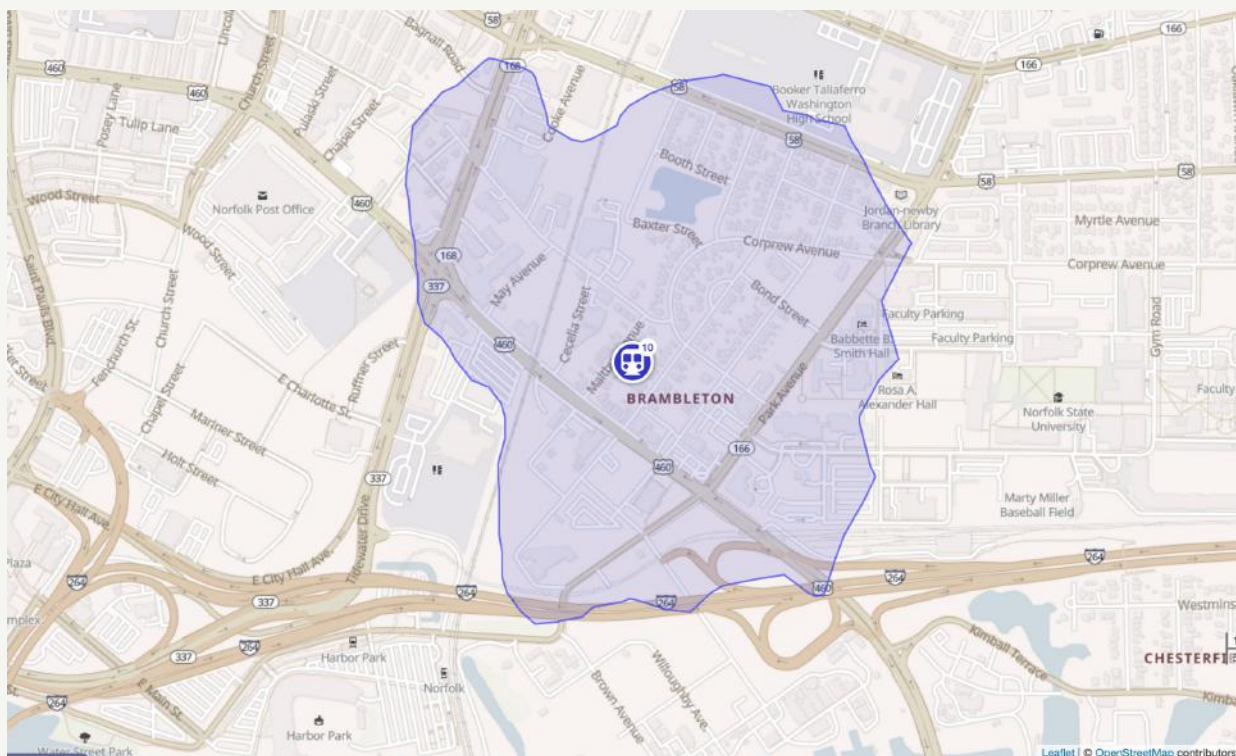
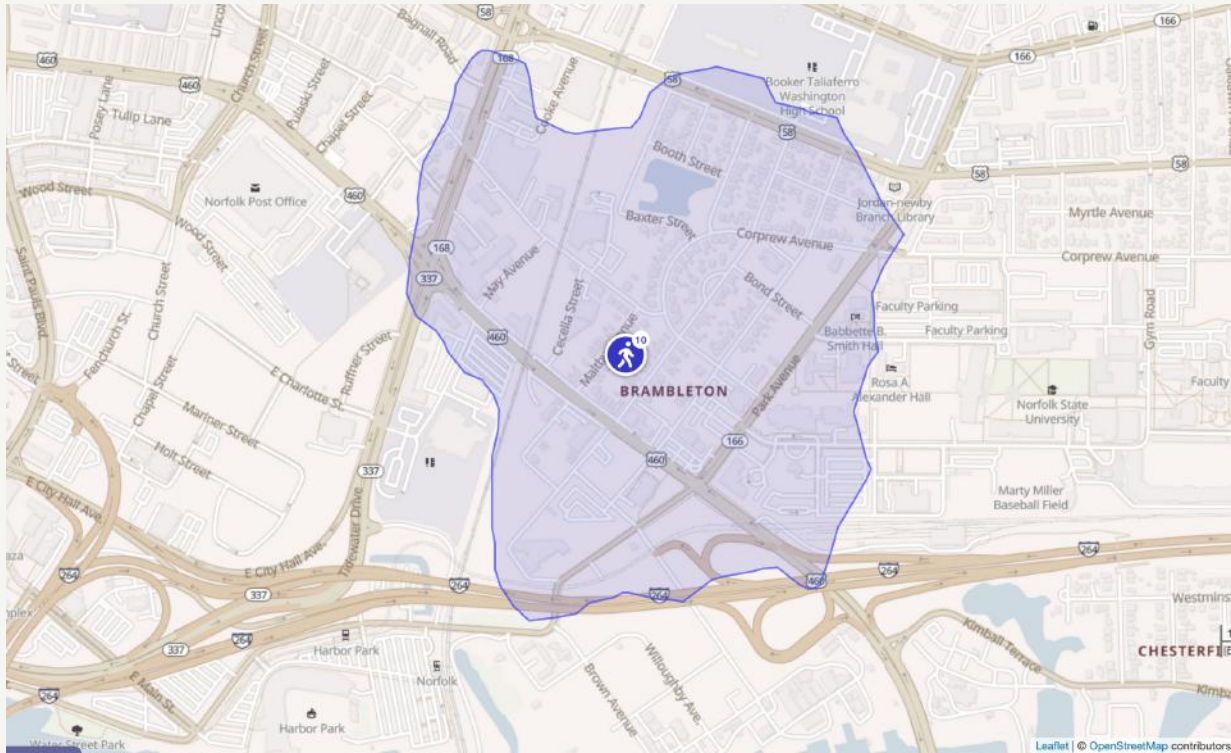
The Walk Score for 726 Maltby Avenue is based on the following categories.



The map displays the city of Norfolk and the independent city of Portsmouth, which together form the city of Norfolk. The city limits are outlined in blue. Surrounding areas include Harbour View, Churchland, Deanes, Boone, Western Branch, Bowers Hill, Sunray, Deep Creek, Craddock, Avalon, Fortlock, Greenbrier, Brigadoon, Homestead, Bellany Manor, Larkspur, Pecan Gardens, Windsor Woods, Thalia Village, Eastern Park, Eureka, Michaelwood, Robb's Corner, Smith Lake Terrace, Bayville Park, Fish House Island, East Beach, Forest Park, Sunnyside Acres, EA, Norfolk Naval Station (Chambers Field), Norfolk International Airport, Lake Smith, Coleman Place, River Oaks, Lake Terrace, Broad Creek, Ventosa, Sterfield, Kempville Heights, Sherry Park, Rivedale, and Greenbrier. Major roads shown include I-64, I-264, and I-63. A scale bar indicates 3 km and 1 mile.



Commute Time



SCHOOLS

RADIUS: 1 MILE(S)

PUBLIC - ELEMENTARY

	Distance	Grades	Students	Students per Teacher	GreatSchools Rating (1)
Ruffner School	0.22	3rd-8th	540	10	2/10
Jacox Elementary	0.65	Pre-K-5th	567	13	2/10
P.b. Young Senior Elementary	0.75	Pre-K-2nd	217	9	
Richard Bowling Elementary	0.95	Pre-K-5th	462	13	4/10

Community Rating (2)

Ruffner School	5
Jacox Elementary	
P.b. Young Senior Elementary	
Richard Bowling Elementary	

PUBLIC - MIDDLE/HIGH

	Distance	Grades	Students	Students per Teacher	GreatSchools Rating (1)
Ruffner School	0.22	3rd-8th	540	10	2/10
Booker T Washington High	0.45	9th-12th	955	13	2/10

Community Rating (2)

Ruffner School	5
Booker T Washington High	

PRIVATE

	Distance	Grades	Students	Classrooms	Community Rating (2)
First Baptist Ready Academy Christian School	0.69	Pre-K-5th	114		

(1) School data is provided by GreatSchools, a nonprofit organization. Website: GreatSchools.org. Based on a scale of 1-10.

(2) The community rating is the overall rating that is submitted by either a Parent/Guardian, Teacher, Staff, Administrator, Student or Former Student. There will be only one rating per school. Based on a scale of 1-5.

(3) Powered by Liveby. Information is deemed reliable but not guaranteed. Copyright © 2021 Liveby. All rights reserved.

LOCAL BUSINESSES

RADIUS: 1 MILE(S)

ATTRACTIONS - RECREATION

	Address	Phone #	Distance	Description
Bugg Enterprise, LLC	964 Marshall Ave	(757) 938-1959	0.34	Entertainment Service
Makr Entertainment LLC	727 Lincoln St	(757) 309-1178	0.62	Entertainers And Entertainment Groups
City Of Norfolk	830 Goff St	(757) 664-7431	0.76	Swimming Pool, Non-Membership
Cash Mafia Entertainment LLC	1524 Cary Ave Apt A	(804) 964-5448	0.79	Entertainers And Entertainment Groups
Norfolk Baseball Company LLC	409 Bank St	(757) 435-1750	0.85	Baseball Club, Except Professional And Semi-Professional
Smith Betty School Of Dance	500 E Plume St	(757) 722-0200	0.87	Dance Studio And School
Hampton Roads Admirals Inc	201 E Brambleton Ave	(757) 640-1212	0.87	Sports Professionals, Nec
Virginia Stage Company	555 E Main St Ste 1001	(757) 627-1234	0.88	Legitimate Live Theater Producers

Boys And Girls Choir Of Harlem, LLC	999 Waterside Dr	(757) 622-6000	0.92	Entertainers And Entertainment Groups
Renaissance Movement Enterprises, L.L.C.	1008 Anderson St	(757) 581-3515	0.93	Entertainers

BANKS - FINANCIAL

	Address	Phone #	Distance	Description
Populus Financial Group, Inc	720 Church St Ste 2a	(757) 533-5187	0.47	Check Cashing Agencies
Marcus D Gersbach & Co, LLC	999 Waterside Dr Ste 435	(757) 925-2105	0.85	Financing: Automobiles, Furniture, Etc., Not A Deposit Bank
Currency Exchange International, Corp.	300 Monticello Ave Ste 18	(757) 216-3500	0.87	Foreign Currency Exchange
Pnc Bank, National Association	555 E Main St Ste 1000	(757) 625-1214	0.88	National Commercial Banks
Coastal Towne Mortgage, LLC	3 Commercial Pl Ste 1450	(573) 218-0740	0.91	Mortgage Bankers And Loan Correspondents
Newtowne Mortgage, LLC	3 Commercial Pl Ste 1420	(757) 687-5088	0.91	Mortgage Bankers
Dmb Mobile Notary And Lsa LLC	999 Waterside Dr Ste 2525	(757) 918-1817	0.92	Loan Agents
Xenith Bank	999 Waterside Dr Ste 200	(757) 434-2701	0.92	Functions Related To Deposit Banking
Wells Fargo Bank, National Association	440 Monticello Ave	(757) 622-2740	0.93	National Commercial Banks
Bank Of America, National Association	300 E Main St Ste 1300	(757) 355-5413	1	National Commercial Banks

EATING - DRINKING

	Address	Phone #	Distance	Description
Aramark Facility Svc.	1209 Corprew Ave	(757) 544-0843	0.15	Caterers
Chick-Fil-A	700 Park Ave	(757) 823-2114	0.2	Fast-Food Restaurant, Chain
Tropical Smoothie Cafe	700 Park Ave	(757) 823-8342	0.27	Cafe
Tymark Enterprises, Inc.	850 Tidewater Dr	(757) 587-2548	0.31	Fast-Food Restaurant, Chain
Dee's Hotdog	1411 E Virginia Beach Blv	(757) 627-3006	0.32	Hot Dog Stand
Carrols LLC	1000 Tidewater Dr	(757) 625-4685	0.41	Fast-Food Restaurant, Chain
Jump'n Gs Icecream	1108 Tidewater Dr	(757) 622-7744	0.46	Ice Cream Stands Or Dairy Bars
Golden City	1002 Park Ave	(757) 629-0888	0.48	Chinese Restaurant
Chanel Cafe & Catering LLC	1010 Park Ave	(757) 937-1391	0.49	Restaurant, Family: Chain
Tidewater Assoc Of Svc Contractors	""	(757) 858-6000	0.55	Contract Food Services

HEALTH CARE SERVICES

	Address	Phone #	Distance	Description
Home Care With Edna Earl, LLC	1130 Tabb St	(757) 622-1571	0.3	Home Health Care Services
Tidewater Home Care, Inc.	1130 Tabb St Ste D	(757) 275-7010	0.3	Home Health Care Services
On Behalf Of God LLC	850 Tidewater Dr	(757) 401-0618	0.31	Home Health Care Services
Open Arms Personal Care, Inc.	852 Tidewater Dr Ste A	(757) 616-0552	0.32	Home Health Care Services
Cheryl G Cauthen M D	1005 May Ave	(757) 623-2123	0.37	Ophthalmologist
Norfolk Eye Physicians & Surgeons, Ltd.	1005 May Ave	(757) 474-7420	0.37	Ophthalmologist
Ltc Holdings, Inc.	901 E Princess Anne Rd	(757) 626-1642	0.54	Convalescent Home With Continuous Nursing Care
Kaye's Compassion Home Care LLC	451 Church St	(757) 756-5259	0.56	Home Health Care Services
Buya Warm Hands And Hearths	645 Church St Ste 101	(310) 270-0909	0.56	Home Health Care Services
James L Watson Jr	703 E Virginia Beach Blvd	(757) 622-3391	0.62	Dentists' Office

HOSPITALITY

	Address	Phone #	Distance	Description
E2f Student Housing I, LLC	700 Park Ave Ste A105	(757) 823-2654	0.2	Rooming And Boarding Houses
Economy Inn	1050 Tidewater Dr	(757) 623-3016	0.43	Inns

Benaiah Sovereign Grand Lodge	807 Thayer St	(757) 550-4142	0.63	Vacation Lodges
Novus Diluculo Foundation	2628 Kimball Ter	(757) 470-7094	0.89	Rooming And Boarding Houses
Downtown Hotel, LLC	700 Monticello Ave	(757) 627-5555	0.9	Resort Hotel
Laxmi, Hotel, LLC	700 Monticello Ave	(757) 627-5555	0.9	Hotels
Dignity Village, LLC	500 E Main St Ste 160046	(757) 598-3154	0.9	Rooming And Boarding Houses

ORGANIZATIONS - ASSOCIATIONS

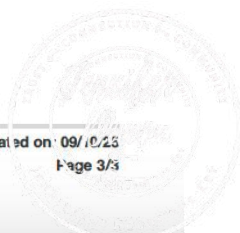
	Address	Phone #	Distance	Description
Grace Episcopal Church	1400 E Brambleton Ave	(757) 625-2868	0.08	Episcopal Church
Shiloh Baptist Church	745 Park Ave	(757) 625-4367	0.15	Baptist Church
Greater Metropolitan American Zion Church	822 E Brambleton Ave	(757) 625-0231	0.44	Methodist Church
Basilica St. Mary Immaculate Conception	232 Chapel St	(757) 622-4487	0.51	Catholic Church
Saint Mary Catholic Church	1000 Holt St	(757) 622-4487	0.51	Catholic Church
Bethel Baptist Church	1502 Link St	(757) 623-1575	0.57	Baptist Church
Bethlehem Baptist Church	1502 Link St	(757) 623-1575	0.57	Baptist Church
Bethel Baptist Church Of Norfolk, Va Inc.	1234 Reservoir Ave	(757) 622-3433	0.57	Baptist Church
Saint John's African Methodist Episcopal Church	545 E Bute St	(757) 625-2713	0.6	Methodist Church
First Calvary Baptist Church	813 Henry St	(757) 622-7418	0.61	Baptist Church

PERSONAL SERVICES

	Address	Phone #	Distance	Description
Nsu Echols Gym Ncb	2401 Corprew Ave	(757) 823-8085	0.74	Athletic Club And Gymsnasiums, Membership
Balou Baby LLC	440 Monticello Ave	(757) 597-5311	0.89	Health Club
Skin, A Medical Spa L.L.c.	517 Graydon Ave	(757) 228-5100	0.99	Spas

SHOPPING

	Address	Phone #	Distance	Description
7-Eleven	1510 E Brambleton Ave	(757) 640-0002	0.14	Convenience Stores, Chain
Affordable Stylez 4 Less Unisex LLC	1036 E Brambleton Ave	(757) 390-5465	0.31	Grocery Stores
Guaranteed Supply Company	1139 E Princess Anne Rd	(757) 314-4370	0.44	Lumber And Other Building Materials
Harold Enterprises LLC Leavay	1240 E Princess Anne Rd	(757) 622-8325	0.48	Grocery Stores, Independent
Qwik C's	840 Church St Ste E	(484) 466-1553	0.58	Miscellaneous General Merchandise
Family Dollar Stores, Inc.	2328 E Princess Anne Rd	(757) 335-6500	0.64	Variety Stores
Coastal Investments, Inc.	2338 E Princess Anne Rd	(757) 622-9076	0.68	Convenience Stores, Chain
Shaveta Inc.	420 Monticello Ave Ste 12	(757) 416-6785	0.91	Convenience Stores, Chain
Hickory Farms, LLC	300 Monticello Ave	(757) 533-9088	0.92	Gourmet Food Stores
Army & Air Force Exchange Service	Fort Eustis Bldg 1386	(757) 887-0293	0.93	Army-Navy Goods Stores



Located in one of Norfolk's most connected and energetic communities, 726 Maltby Avenue blends comfort, convenience, and community in all the right ways. Life here comes with easy access to parks, shopping, dining, entertainment, and everyday essentials — all within a short drive from home.

The neighborhood offers plenty of ways to stay active and engaged, with nearby recreation spaces, walking paths, and community venues perfect for unwinding or getting together with friends. Local cafés, grocery options, and restaurants add everyday ease, while nearby medical, banking, and personal services help keep life running smoothly.

With major routes close by and everything you need within reach, 726 Maltby Avenue makes daily life feel effortless — the kind of place where connection, convenience, and comfort naturally come together.



MAKE MALTBY YOUR HOME

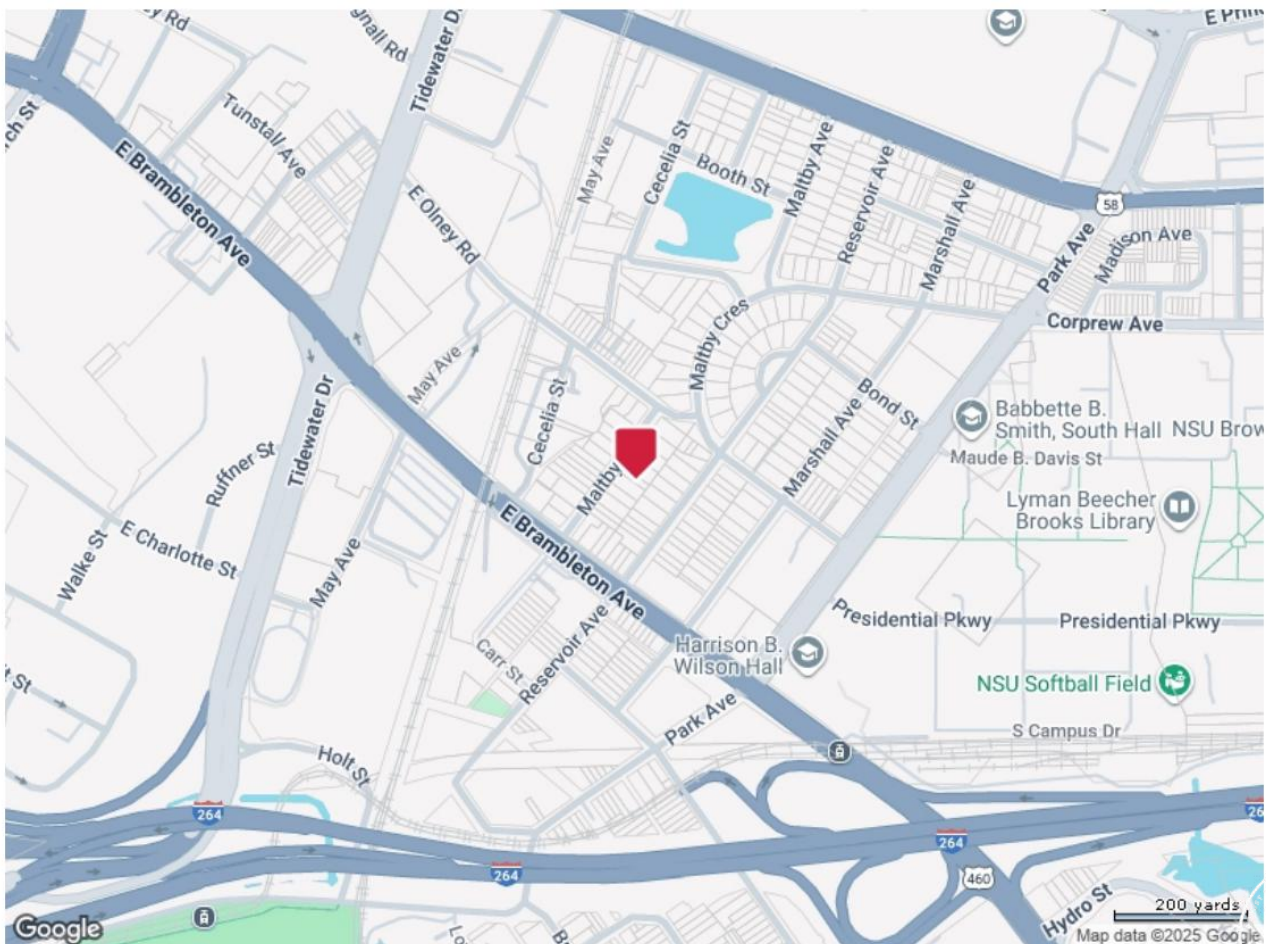
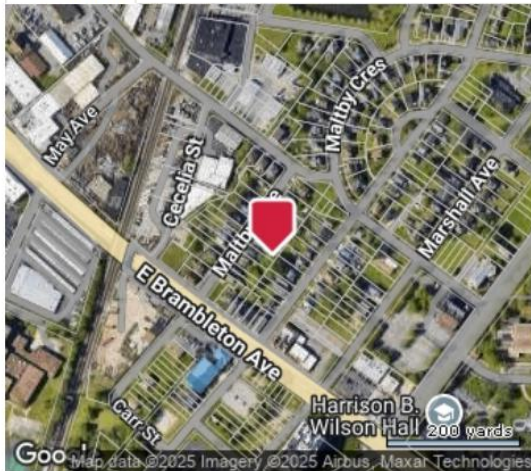


This well-positioned home offers a prime location in the connected Brambleton neighborhood of Norfolk — a community known for its convenient city access and welcoming local energy. Just minutes from parks, schools, restaurants, and everyday essentials, 726 Maltby Avenue delivers an easy blend of comfort and accessibility.

With nearby shopping, dining, and major roadways all within reach, daily routines feel simple and stress-free. Whether you're commuting, exploring downtown, or enjoying quiet time at home, this address offers a relaxed yet connected lifestyle right in the heart of Norfolk.

726 Maltby Avenue, Norfolk, Virginia 23504

Parcel Map



726 Maltby Avenue Norfolk

It's Time to Make
Your Move to Maltby

Don't miss your opportunity to
love where you live

LEARN MORE:
JenniferDawnRealEstate.com





Let's *Make* Maltby *Your* Home

757-524-0417

Jennifer@JenniferDawnRealEstate.com

2204 Hampton Blvd.

Norfolk, VA 23517



www.JenniferDawnRealEstate.com

LUXURY ~ RESIDENTIAL ~ RELOCATION ~ INVESTMENT
REALTOR®

HOWARD HANNA

REAL ESTATE SERVICES

If your property is currently listed with another real estate broker, please disregard this offer. ©Jennifer Dawn Howard Hanna Real Estate Services. 2204 Hampton Blvd. Norfolk, VA 23517 Equal Housing Opportunity. VA License # 0226011728