

A photograph of a building entrance. The facade is made of light-colored stone blocks. At the top center is a circular decorative iron ornament. Below it are two small square windows. The main entrance is a double door with an arched top, featuring intricate black ironwork and glass panels. The door is flanked by two tall, narrow windows. The ground in front is paved with stone tiles, and a dark mat is placed in front of the door.

1 CHEDINGTON PLACE UNIT 5B

BRIDLE PATH





WELCOME TO: 1 CHEDINGTON PLACE UNIT 5B

Welcome To The Epitome Of Luxury Living In The Coveted Neighbourhood Of Bayview Ave & The Bridal Path.

1 Chedington Suite 5B Is A Beautifully Maintained, Sun Filled Condo Surrounded By A Serene Oasis Of Lush Ravine Greenery. Step Into A Private Elevator That Takes You Directly To 1810 sqft Of Lavish Living Space. Enjoy Relaxing Views On One Of Two Outdoor Stone Terrace Retreats. Take Advantage Of 24/7 Concierge And Valet Parking, A Few Of The Many Features In This Prestigious Landmark Building.

Considered One Of The Best Buildings In The City With Outstanding Services And Amenities & Just Steps To Sunnybrook Hospital, Rosedale Golf Club, The Granite Club & Minutes To The 401 & Downtown. This Is An Opportunity Not To Be Missed, A Rare Chance To Enjoy One Of The Cities' Finest Living Experiences.













INCLUDED FEATURES

- Direct elevator access leads to a formal entryway
- Upgraded Automatic Door Opener for ease in entering and exiting the elevator
- Spacious living room with multiple seating areas, gas fireplace with a beautiful tile surround and formal mantle, and walkout to covered stone terrace
- Beautiful bright dining room with broadloom and pot lighting
- large kitchen with seamless built-ins and breakfast bar
- Generous size primary with 5-piece ensuite, 2 closets, and a wall of builtins
- Sun-filled 2nd bedroom with a double closet and walkout to a beautiful stone terrace
- Pristine hardwood flooring in the living room and 2nd bedroom
- Floor-to-ceiling windows throughout with sun-filled east and west views
- Two outdoor stone terraces (total approximately 245 sq ft)
- 2 owned underground parking spots
- 1 owned oversized locker

BUILDING AMENITIES

- 24 hour Concierge Service
- Ample Visitor parking
- Car Wash
- Gym
- Sauna
- Indoor Pool

INCLUSIONS

- Upgraded Automatic Door Opener in the Elevator
- All window coverings, including custom valances and blinds
- All electric light fixtures
- All appliances including:
 - GE Profile Oven & Cooktop
 - GE Profile built-in Microwave
 - Sub Zero side by side Fridge Freezer
 - Built-In Maytag Dishwasher
 - Stacked GE Washer & Dryer

EXCLUSIONS

- TBD

RENTAL ITEMS

- None

MAINTENANCE FEES

- \$2862.40

TAXES

- \$9,985.43 (2025)

POSSESSION

- Immediate/ To Be Arranged

HEATING

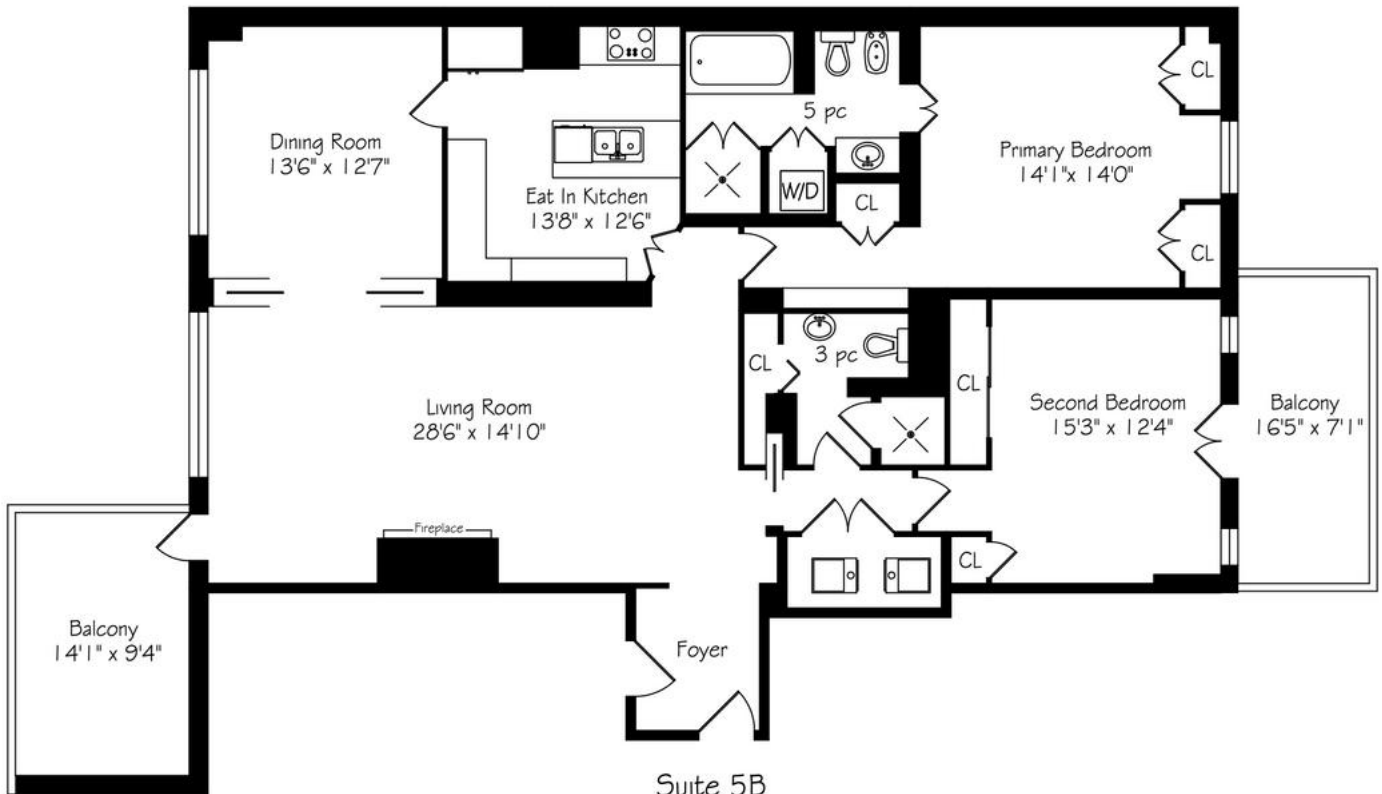
- Heat Pump, Gas

COOLING

- Central Air Conditioning

1 CHEDINGTON PLACE UNIT 5B

Floor Plans



Suite 5B
1810 Square Feet
+ 245 Balconies



ELEVATE YOUR EXPECTATIONS



Candy Latimer
Real Estate Agent
416.371.7184
candy@heapsestrin.com



For Royal LePage Real Estate Services Heaps Estrin Team, Brokerage. All information and statements contained herein, provided by Royal LePage Real Estate Services Heaps Estrin Team, Brokerage regarding property for sale, rental or financing is from sources deemed reliable and assumed correct, but no warranty or representation is made as to the accuracy thereof and same is submitted subject to errors, omissions, changes in price, rental or other conditions, prior sale or withdrawal without notice.

Royal LePage Real Estate Services Heaps Estrin Team, Brokerage Independently Owned and Operated