

The Durable Choice



Product
Catalogue

ALLDURO

ALLDURO

ALLDURO CONSTRUCTION SUPPLIES

The Allduro team combine domestic and globally recognised brands with a solid commitment to service and technical support. Allduro is recognised within the construction industry as a specialist material supplier to the waterproofing, concrete, tiling, and resilient flooring trades.

Since our inception, we've made it our priority to understand our customers' needs to partner with them to deliver the right solutions for their projects.

Together with our strategic trading partners, pair technical expertise and superior product knowledge, we deliver personalised service and unmatched support with exceptional results to every customer.

Primers	5
Membranes (Water & Solvent Based)	8
Waterproofing Accessories	14
Waterproofing Selector	18
Membranes (Sheet)	20
Sealants	31
Injection Systems	34
Waterstops	38
Tile Adhesives	41
Grouts	44
Silicone	45
Tiling Product Selector	46
Construction (Repair Mortar)	49
Construction (Grout)	55
Floor Levelling	67



TM



WPA WATERPROOFING PRODUCTS IS A COMPLETE RANGE OF LIQUID & SHEET APPLIED WATERPROOFING MEMBRANES AND ACCESSORIES.

WPA waterproofing products is a complete range of Australian made, liquid and sheet applied waterproofing membranes and accessories developed by a team with over 230 years of hands on waterproofing experience and who are passionate about raising the standard of waterproofing in Australia.

The WPA range is designed for the entire building, from waterproofing in-ground retaining walls, to waterproofing showers, bathrooms, decks, balconies, and rooftops.

WPA waterproofing membranes are designed for waterproofing applicators and have been specifically developed for Australian conditions and standards. All membranes have either current Branz or CSIRO test reports available as well as Codemark certification ensuring

CodeMark Australia Accreditation



The CodeMark Certification is a voluntary third-party building product certification scheme that authorises the use of new and innovative products in specified circumstances in order to facilitate compliance with Volumes One and Two of the NCC, also known as the Building Code of Australia or BCA.

CodeMark provides confidence and certainty to regulatory authorities and the market through the issue of a Certificate of Conformity.



WPA 160

NON-POROUS PRIMER

WPA 160 is a specialised, solvent free primer designed to enhance the adhesion of subsequently applied waterproofing membranes, adhesives, toppings and decorative finishes on non-porous substrates. The unique formulation ensures outstanding adhesion over difficult to bond to surfaces, and offers a safe and environmentally friendly alternative to traditional methods of etching and solvent based primers.

Product Characteristics

- Solvent free, fast drying, non-tacky.
- Suitable for bonding to a wide range of metals, plastics, glazed, smooth and dense surfaces.
- Excellent adhesion properties.
- Time saving, simplified application.
- Suitable for internal and external applications.
- Can be directly covered with waterproofing membranes, tile adhesives, mortars and paints.

Colour:	Size:	UOM:
Orange	1 Litre	Drum
Orange	4 Litre	Drum
Orange	10 Litre	Drum



WPA 360

WATER BASED PRIMER

WPA 360 is a water based, low solids, fast drying primer for wet area waterproofing using WPA 200, WPA 230UV, WPA 400, WPA 500 or WPA Rapid waterproofing membranes. WPA 360 may also be used as a primer for RLA levelling compounds. The application of WPA 360 aids in providing a substrate with uniform absorption and enhances adhesion of subsequent coatings.

Product Characteristics

- Solvent free
- Non-hazardous
- Fast drying
- Good adhesion properties
- Economical

Colour:	Size:	UOM:
Red (When Dry)	4 Litre	Drum
Red (When Dry)	15 Litre	Drum



WPA 460

TWO PART WATER BASED EPOXY PRIMER

WPA 460 is a two part water based epoxy primer used to seal concrete and masonry surfaces. WPA 460 cures to a water resistant coating with excellent adhesion to most common building substrates.

Product Characteristics

- Water based, user friendly.
- Convenient mixing ratio, 1:1 by volume.
- Environmentally friendly.
- Excellent water resistance.
- Excellent adhesion to building substrates including concrete, fibre cement, all masonry surfaces and Scyon sheeting.
- 20 litre kit [10 Litre Part A + 10 Litre Part B].

Colour:	Size:	UOM:
Grey	20 Litre	Kit



WPA 560

MOISTURE SEAL TWO PART WATER BASED EPOXY PRIMER

WPA 560 Moisture Seal is a two part, water-based epoxy primer designed as a water and vapour proof coating under waterproofing membranes, ceramic tile adhesives*, levelling compounds* and timber floors. [*additional priming required].

Product Characteristics

- Withstands hydrostatic head of water pressure up to 25 metres or 250kPa.
- Complies with AS 4020:2005 "Products for use in contact with drinking water".
- Complies with ASTM E96 for water vapour transmission.
- Convenient mixing ratio, 1:1 by volume.
- Excellent adhesion to building substrates including concrete, fibre cement, all masonry surfaces and Scyon sheeting.
- Water based and user friendly.

Colour:	Size:	UOM:
Light Grey (Mixed)	8 Litre	Kit
Light Grey (Mixed)	20 Litre	Kit

PRIMERS

Solvent Based



WPA SB

SOLVENT BASED PRIMER

WPA SB Primer is a fast drying, solvent based primer, with exceptional penetrating properties. WPA SB Primer is designed to assist in improving adhesion on porous and some non-porous substrates.

Product Characteristics

- New or old concrete.
- Brick and block work.
- Compressed cement sheeting.
- Villaboard.
- Plywood.
- Primer for acrylic coatings.
- PVC flanges and pipes, aluminium, copper and stainless steel.

Colour:	Size:	UOM:
Red Liquid	4 Litre	Drum
Red Liquid	20 Litre	Drum





WPA 400

UNDERTILE WATERPROOFING MEMBRANE

WPA 400 is an elastomeric, fibre reinforced waterproofing membrane based on high performance polymer technology. Designed for a range of undertile waterproofing applications, WPA 400 offers excellent adhesion properties and outstanding low water vapour transmission properties. Fully compatible with polymer modified cement based tile adhesives, screeds and renders. The unique formulation provides excellent workability and film build. Class III membrane in accordance with AS/NZS 4858 & AS 4654.1.

Product Characteristics

- Fast curing.
- Low VOC content.
- Completely resistant to re-emulsification when fully cured.
- Excellent adhesion to a wide variety of substrates.
- Compatible with a wide range of tile adhesives.
- Permanently flexible.
- Fibre reinforced.

Colour:	Size:	UOM:
Blue	15 Litre	Drum
Grey	15 Litre	Drum



WPA 500

UNDERTILE WATERPROOFING MEMBRANE

WPA 500 is a waterborne flexible waterproofing membrane specifically designed for use under ceramic and stone tile finishes. The unique formulation provides excellent workability and film build. Class III membrane in accordance with AS/NZS 4858 & AS 4654.1.

Product Characteristics

- Fast curing.
- Low VOC content.
- Completely resistant to re-emulsification when fully cured.
- Excellent adhesion to a wide variety of substrates.
- Compatible with a wide range of tile adhesives.
- Permanently flexible.
- Fibre reinforced.

Colour:	Size:	UOM:
Blue	15 Litre	Drum
Grey	15 Litre	Drum



WPA Rapid

FAST CURE MEMBRANE

WPA Rapid is a waterborne, flexible waterproofing membrane, utilising next generation, self-crosslinking technology, which enables the membrane to achieve cured properties rapidly. WPA Rapid is designed for use under tiles in internal and external applications. Class III membrane in accordance with ASNZS 4858 and AS 4654.1.

Product Characteristics

- Fast curing.
- Low VOC content.
- Completely resistant to re-emulsification when fully cured.
- Excellent adhesion to a wide variety of substrates.
- Compatible with a wide range of tile adhesives.
- Permanently flexible.
- Fibre reinforced.

Colour:	Size:	UOM:
Grey	15 Litre	Drum



WPA 230UV

WATER BASED UV STABLE POLYURETHANE MEMBRANE

WPA 230UV is an elastomeric, one part, fibre reinforced, water based polyurethane membrane suitable for waterproofing shower recesses, bathrooms, laundries, decks, balconies and rooftops. Class III membrane in accordance with ASNZS 4858 & AS 4654.1.

Product Characteristics

- Low VOC content.
- Permanently flexible.
- Excellent adhesion to a wide variety of substrates.
- Single pack.
- Quick drying.
- Completely resistant to re-emulsification when fully cured.
- Safe and easy to use.
- UV stable.

Colour:	Size:	UOM:
Grey	15 Litre	Drum
White	15 Litre	Drum



WPA TuffCote

TRAFFICABLE MEMBRANE

WPA TuffCote is a hard wearing, waterproofing membrane and slip resistant top coat for external floor surfaces. In addition to being a stand alone waterproofing membrane, it is designed to increase the slip and wear resistance of the WPA 230 UV and WPA 200 waterproofing systems in applications subject to residential foot traffic, varying climactic conditions and permanent UV light exposure. WPA TuffCote bonds exceptionally well to WPA 230UV, WPA 200 and other suitably prepared surfaces, is resistant to fungi and algae growth and has excellent weather resistance. WPA TuffCote can also be used as a standalone surface coating on new or existing concrete surfaces to provide a fresh, rejuvenated and slip resistant finish. Recommended for roof areas, walkways, decks & balconies, rooftop plant rooms, general horizontal surface areas exposed to weather and foot traffic. Class II membrane in accordance with AS 4654.1.

Product Characteristics

- Resistant to fungi and algae growth.
- Solvent free, non-hazardous.
- Excellent weathering properties.
- Excellent adhesion to substrates.
- Excellent ponding water resistance.
- Foot trafficable.
- Provides a slip resistant surface, no broadcasting of aggregates required.
- Easy to clean and maintain.

Colour:	Size:	UOM:
Light Grey	15 Litre	Drum
Slate Grey	15 Litre	Drum





WPA 100

CEMENTITIOUS WATERPROOFING MEMBRANE

WPA 100 is a single component, fibre reinforced, rapid drying, cementitious waterproofing membrane. It is based on special cements, modified with polymers and selected graded aggregates along with unique waterproofing additives to produce a flexible waterproofing compound. It is suitable for both positive and negative side waterproofing applications and is capable of withstanding significant strain.

Product Characteristics

- Class I membrane in accordance with AS/NZS 4858 & AS 4654.1.
- AS 4020:2018 approval for use with potable water.
- Fast curing.
- Suitable for both positive and negative hydrostatic water pressure applications.
- Salt water resistant.
- Permanently flexible.
- Completely resistant to emulsification.
- Excellent adhesion to a wide variety of substrates.
- Suitable for spray applications.

Colour:	Size:	UOM:
Grey	20 kg	Bag



WPA 200

TWO-PART CEMENTITIOUS WATERPROOFING MEMBRANE

WPA 200 is a highly flexible, two-part, rapid drying, cementitious waterproofing membrane, specifically designed for use under ceramic and stone tile finishes in bathrooms, balconies, rooftops and swimming pools under-tiles. WPA 200 combines the fast drying and excellent adhesion characteristics of traditional two-part membranes with the outstanding toughness, elongation and flexibility of next generation acrylic waterproofing membranes. It is formulated to be UV resistant and is suitable for light (maintenance) traffic. WPA 200 has excellent adhesion to concrete, cement screeds and most F/C sheets and may be used in conjunction with WPA Elastoband for maximum performance and ease of use.

Product Characteristics

- Class II membrane in accordance with AS/NZS 4858 & AS 4654.1.
- UV resistant.
- Suitable for light foot traffic.
- Compatible with a wide range of tile adhesives.
- Fast curing; permanently flexible.
- Completely resistant to re-emulsification.
- Excellent adhesion to a wide variety of substrates.
- Suitable for spray applications.

Colour:	Size:	UOM:
Off-White	40kg kit	-

MEMBRANES

Moisture Cured



WPA 990

POLYURETHANE WATERPROOFING MEMBRANE

WPA 990 is a single component, liquid applied, moisture cured polyurethane waterproofing membrane, suitable for waterproofing most non-exposed applications. WPA 990 cures to form a seamless, tough, durable, elastomeric waterproofing membrane. WPA 990 has excellent adhesion to most suitably primed building substrates and is suitable for above and below ground applications.

Product Characteristics

- Class III membrane.
- Excellent adhesion to a wide variety of substrates.
- Fast curing.
- Tar and bitumen free.
- Permanently flexible.
- Good chemical resistance.

Colour:	Size:	UOM:
Grey	15 Litre	Drum



WPA 992

POLYURETHANE WATERPROOFING MEMBRANE

WPA 992 is a thixotropic, one part, liquid applied, moisture cured polyurethane waterproofing membrane, suitable for waterproofing most non-exposed applications. WPA 992 cures to form a seamless, tough, durable, elastomeric waterproofing membrane. WPA 992 has excellent adhesion to most suitably primed building substrates and is suitable for above and below ground applications. Recommended for retaining walls, planter boxes, internal wet areas, balconies and decks.

Product Characteristics

- Class III membrane.
- Excellent adhesion to a wide variety of substrates.
- Fast curing.
- Tar and bitumen free.
- Permanently flexible.
- Good chemical resistance.
- Single pack.

Colour:	Size:	UOM:
Grey	15 Litre	Drum



WPA 992UV

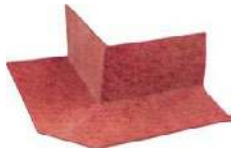
UV STABLE POLYURETHANE WATERPROOFING MEMBRANE

WPA 992UV is a thixotropic, one part, liquid applied, moisture cured polyurethane waterproofing membrane, suitable for waterproofing most applications. WPA 992UV cures to form a UV stable, seamless, tough, durable, elastomeric waterproofing membrane. WPA 992UV has excellent adhesion to most suitably primed building substrates and is suitable for above and below ground applications. Recommended for retaining walls, planter boxes, internal wet areas, balconies & decks, rooftops or exposed applications.

Product Characteristics

- Class III membrane.
- Excellent adhesion to a wide variety of substrates.
- Fast curing.
- UV stable.
- Tar and bitumen free.
- Permanently flexible.
- Good chemical resistance.

Colour:	Size:	UOM:
Charcoal	15 Litre	Drum



WPA Elastoband

JOINT & PENETRATION DETAILING SYSTEMS

WPA Elastoband is an innovative detailing system designed for waterproofing and sealing all types of joints, junctions and general areas subject to movement. Elastoband can accommodate movement in longitudinal, lateral and transverse directions enabling high elongation, rupture resistance, and up to 100% elastic recovery. Elastoband is easy to install and provides for considerable time saving efficiencies and durable properties over conventional bond breaking sealants and tapes.

Features

- Time saving simplified installation.
- Eliminates need for sealant bond breakers and tapes.
- Long term protection at critical joint intersections and movement zones.
- Accommodates movement in longitudinal and lateral directions with up to 100% elastic recovery.
- Constructed of a unique high strength rubber compound that is rupture, chemical and water resistant.
- Can be used in areas subject to full immersion.
- Compatible with all WPA membranes.
- Suitable for commercial, industrial and residential applications.

Colour:	Size:	UOM:
Red	120mm x 50M	Roll
Red	120mm x 1LM	Length

PREFABRICATED JOINT CORNER

- 270° external joint corner.
- 90° internal joint corner.

Colour:	Size:	UOM:
Red	External 270°	Each
Red	Internal 90°	Each

PREFABRICATED JOINT TAP COLLAR

- Tap Collar

Colour:	Size:	UOM:
Red	120mm x 120mm	Each



WPA BUTYL TAPE

MULTI PURPOSE SELF ADHESIVE DETAILING TAPE

The WPA Butyl Waterproofing Tape is a multipurpose self-adhesive sealing bandage designed for flashing and detailing a variety of surfaces. With outstanding adhesion properties of the butyl rubber backing, the WPA Butyl Tape is ideal for sealing internal and external surfaces that require protection against moisture ingress, vibration and flexing.

The WPA Butyl Tape provides an instant seal to the surface it is applied to, avoiding down time for drying or curing. Ideally suited for waterproofing, roofing and general building applications the Butyl Waterproofing Tape is designed to be finished over with WPA adhesives, membranes, coatings, mortars, adhesives and renders.

Features

- Solvent free, non-toxic peel n stick application.
- Primer-less application (on dust free and stable surfaces).
- Excellent adhesive properties over a variety of surfaces.
- Easy workability and deformability over substrates.
- Excellent thermal stability.
- Flexible, rupture and tear resistant.
- Outstanding adhesion retention at low temperatures.
- Instant sealing properties, no drying required.
- Compatible with cement-based finishes, e.g. tile adhesive, renders, textures, etc.

Colour:	Size:	UOM:
Grey	100mm x 30M	Roll



WPA REINFORCING FABRIC

WPA Reinforcing Fabric is a 40 gram spun polypropylene fabric used for reinforcing WPA liquid applied membranes. Also suitable for use in between coats of membranes when used over metal surfaces covering pin holes or sheet laps. Other sizes available by order.

Colour:	Size:	UOM:
White	100mm x 100M	Roll
White	150mm x 100M	Roll
White	200mm x 100M	Roll
White	1M x 100M	Roll



Heavy Duty Roller Frame

ROLLER FRAME

Red Dog heavy duty cage frame with 7.5mm rod and soft grip handle.

- Economical.
- Strong and durable.

Colour:	Size:	UOM:
Yellow/Black	230mm	Each



Long Arm Micro Roller Frame

ROLLER FRAME

- To suit Red Dog micro roller sleeves 901-092.

Colour:	Size:	UOM:
Blue	110mm x 390mm	Each



Polyester Roller Cover

ROLLER COVER

- 12mm nap.
- Disposal roller cover.

Colour:	Size:	UOM:
Orange	230mm	Each



Micro Roller Sleeve

ROLLER SLEEVE

- 12mm nap.
- Disposal roller cover.

Colour:	Size:	UOM:
Blue/White Stripe	110mm	Each



Industrial Brush

BRUSH

Economical wooden handled, disposable, hog's bristle brush.

Colour:	Size:	UOM:
-	25mm	Each
-	50mm	Each
-	75mm	Each
-	100mm	Each



Synthetic Filament Brush

BRUSH

General purpose paint brush suitable for many waterproofing applications. Synthetic hollow filament, tin ferrule and plastic handle ensures easy loading.

- Economical
- Disposable

Colour:	Size:	UOM:
Yellow	50mm	Each
Yellow	75mm	Each
Yellow	100mm	Each



Sausage Gun

GUN

Great value for money, our best selling sausage gun.

- Suits all 600ml sausages.

Colour:	Size:	UOM:
Silver	600mm	Each



Silicone Gun 26:1 Ratio

GUN

Cartridge sealant applicator with 26:1 gearing. Operator efficiency is enhanced by the effortless trigger action which allows for smooth, full strokes.

Colour:	Size:	UOM:
Red	215mm	Each

Primer Selector Chart

SUBSTRATE	WPA SB	WPA 160	WPA 360	WPA 460	WPA 560
In Situ Concrete	✓		✓	✓	✓
Precast Concrete & Tilt Up Concrete	✓		✓	✓	✓
Masonry Brick & Block Work	✓		✓	✓	✓
Plasterboard	✓		✓	✓	✓
Compressed Fibre Cement Sheeting	✓		✓	✓	✓
James Hardies Scyon Secura Sheeting		✓		✓	✓
Low density tongue and groove FC flooring	✓	✓		✓	✓
PAA Certified Structural & Marine Plywood	✓	✓			
Rigid Plastics (Except HDPE)	✓ Δ	✓			
Existing Ceramic Tiles		✓			
Aluminum	✓ Δ	✓			
Stainless Steel	✓ Δ	✓			
Copper	✓ Δ	✓			
Galvanised Iron	✓ Δ	✓			
Zincalume	✓ Δ	✓			
Damp Masonry Surfaces				✓	✓
Water based Membranes	✓	✓	✓	✓	✓
Polyurethane Membranes (Moisture cured)	✓			✓	✓
Moisture Barrier on Damp Wall/Floors					✓
Sealing Concrete Floors before Vinyl & Timber Overlays					✓

Δ Moisture cured polyurethane membranes only.

Transition Selector Chart

MEMBRANE	WPA FC	WPA MS	WPA SPUR	WPA Butyl Tape	WPA Elastoband
WPA 100				✓	✓
WPA 200				✓	✓
WPA 230 UV		✓	✓	✓	✓
WPA 400		✓	✓	✓	✓
WPA 500		✓	✓	✓	✓
WPA 990	✓			✓	✓
WPA 992	✓			✓	✓
WPA992 UV	✓			✓	✓
WPA 1500					✓
WPA Aqualay				✓	✓
WPA Rapid		✓	✓	✓	✓

Membrane Selector Chart

RECOMMENDED AREA	WPA 100	WPA 200	WPA 230UV	WPA 400	WPA 500	WPA 990	WPA 992	WPA 992UV	WPA 1500	WPA Aqualay	WPA Rapid
Lift Pits	✓	✓				✓	✓	✓			
Retaining Walls	✓	✓				✓	✓	✓			
Planter Boxes	✓	✓				✓	✓	✓			
Podium Decks	✓	✓	✓	✓	✓	✓ ∅	✓ ∅	✓ ∅	✓	✓	✓
Sills & Reveals			✓	✓	✓						✓
Internal Wet Areas	✓	✓	✓	✓	✓	✓ ∅	✓ ∅	✓ ∅	✓	✓	✓
Balconies & Terraces	✓	✓	✓	✓	✓	✓ ∅	✓ ∅	✓ ∅	✓	✓	✓
Roof Tops - Tiled	✓	✓	✓	✓	✓				✓	✓	✓
Exposed Rooftops (Maintenance Traffic Only)	✓	✓	✓					✓ ∅			
Box Gutters		✓	✓								
Water Tanks (Potable Water)	✓										
Water Tanks (Non-Potable Water)	✓	✓									
Swimming Pool (Tiled)	✓ ◊	✓ ◊									
Spa's and Saunas (Tiled)	✓ ◊	✓ ◊									

◊ Requires WPA 560 Moisture seal. ∅ Not suitable for direct fixing of tiles.



WPA AQUALAY

WATERPROOFING SHEET MEMBRANE

WPA AQUALAY is an innovative, high performance, flexible, easy to implement new generation sheet waterproofing membrane system. The sheet itself consists of an EVAC core with a laminated non-woven geotextile fleece on either side of the central core. This unique system allows surface finishes including tiles, screeds, and topping to be installed within hours of the membrane installation. Due to the highly flexible central core it also provides anti-fracture properties by isolating overlaying finished substrates, surface cracks and defects.

Product Characteristics

- Class III membrane.
- Excellent adhesion to a wide variety of substrates.
- Fast curing.
- Tar and bitumen free.
- Permanently flexible.
- Good chemical resistance.

Colour:	Size:	UOM:
Red	1m x 30m	Roll



WPA 1500

DECOUPLING MAT

WPA 1500 is a next generation, high performance decoupling and waterproofing sheet membrane for use under tile and stone installation in commercial and residential applications. WPA 1500 is specifically designed for use in areas where differential movement needs to be mitigated.

WPA 1500 consists of a base layer of non-woven polypropylene fabric anchoring fleece, thermally welded to a high density polypropylene, water impermeable core. The top layer consists of non-woven polypropylene fabric, thermally welded to the core, providing an excellent key for subsequently applied tile adhesive systems.

Product Characteristics

- Multi-function product.
- Excellent waterproofing properties.
- Effectively neutralises differential movement.
- Eliminates transmission of in-plane substrate cracks.
- Non-hazardous.
- Heavy duty.
- Light weight and easy to install.
- Fast track system.

Colour:	Size:	UOM:
Grey	1m x 30m	Roll



SOPRALENE Flam 180

SBS – MODIFIED BITUMEN MEMBRANE

SOPRALENE Flam 180 is an SBS-modified bitumen base ply for use in approved multiply membrane and flashing assemblies. SOPRALENE Flam 180 is composed of a proprietary formulation of elastomeric styrene-butadiene-styrene (SBS) polymer modified bitumen and is reinforced with a tough, dimensionally stable non-woven polyester mat. The topside and underside are surfaced with polyolefin burn-off film to optimize heat welding.

Benefits

- Excellent resistance against puncture and tear
- Can be installed any time of the year, wide temperature tolerance

Reinforcement:	Base:	Cap:	Application:
Polyester	✓	–	Heat Welded



SOPRALENE Flam 180 GR

SBS – MODIFIED BITUMEN MEMBRANE

SOPRALENE Flam 180 GR (granulated) is an SBS-modified bitumen cap ply for use in approved multi-ply membrane and flashing assemblies. SOPRALENE Flam 180 GR is composed of a proprietary formulation of elastomeric styrene-butadiene-styrene (SBS) polymer modified bitumen and is reinforced with a tough, dimensionally stable non-woven polyester mat. The topside is surfaced with ceramic coated granules and the underside is surfaced with polyolefin burn-off film to optimize heat welding.

Benefits

- Excellent resistance against puncture and tear
- Can be installed any time of the year, wide temperature tolerance

Reinforcement:	Base:	Cap:	Application:
Polyester	–	✓	Heat Welded



SOPRALENE Stick HR20

SBS – MODIFIED BITUMEN MEMBRANE

SOPRALENE Stick HR20 is an SBS-modified bitumen, base ply for use in approved multiply membrane and flashing assemblies. SOPRALENE Stick HR20 is composed of a proprietary formulation of elastomeric styrenebutadiene-styrene (SBS) polymer modified bitumen in combination with a high tack selfadhesive layer and is reinforced with a tough, dimensionally stable non-woven polyester mat. The topside is surfaced with polyolefin burn-off film to optimize heat welding and the underside is surfaced with protective polyolefin release film that is removed during application.

Benefits

- Slip-resistant surface that allows workers to move freely and safely on the roof while working
- Flameless safe installation
- Fast installation

Reinforcement:	Base:	Cap:	Application:
Polyester	✓	–	Self-adhesive



SOPRALENE Stick HR GR

SBS – MODIFIED BITUMEN MEMBRANE

SOPRALENE Stick HR GR is an SBS-modified bitumen, base ply for use in approved multi-ply membrane and flashing assemblies. SOPRALENE Stick HR GR is composed of a proprietary formulation of elastomeric styrenebutadiene-styrene (SBS) polymer modified bitumen in combination with a high tack selfadhesive layer and is reinforced with a tough, dimensionally stable non-woven polyester mat. The topside is surfaced with fine mineral aggregate to facilitate cold adhesive and hot asphalt applications and the underside is surfaced with protective polyolefin release film that is removed during application.

Benefits

- Composite reinforcement allows matchless dimensional stability

Reinforcement:	Base:	Cap:	Application:
Polyester	–	✓	Self-adhesive



SOPRASUN 3

APP – MODIFIED BITUMEN MEMBRANE

APP plastomeric bitumen-based waterproofing membrane with nonwoven polyester felt reinforcement. The upper side is finished with sand/talcum. The lower side is protected by a torch-on film [torch-on method].

Benefits

- Excellent dimensional stability and elastic performance
- Can be installed any time of the year, wide temperature tolerance

Reinforcement:	Thickness:	Colour:	Application:
Polyester	3.0 mm	–	Heat Welded



SOPRASUN 4 AR

APP – MODIFIED BITUMEN MEMBRANE

APP plastomeric bitumen-based waterproofing membrane with nonwoven polyester felt reinforcement. The upper side is finished with slates. The selvedge is protected with a polypropene film. A torch-on film protects the lower side [torch-on method].

Reinforcement:	Thickness:	Colour:	Application:
Polyester	4.0 mm	Grey Granules	Heat Welded



SOPRASUN 3

APP – MODIFIED BITUMEN MEMBRANE

APP plastomeric bitumen-based waterproofing membrane with nonwoven polyester felt reinforcement. The upper side is finished with sand/talcum. The lower side is protected by a torch-on film (torch-on method).

Benefits

- Excellent dimensional stability and elastic performance
- Can be installed any time of the year, wide temperature tolerance

Reinforcement:	Thickness:	Colour:	Application:
Polyester	3.0 mm	–	Heat Welded



SOPRAGUM GARDEN

APP – MODIFIED BITUMEN MEMBRANE

APP plastomeric bitumen-based waterproofing membrane with nonwoven polyester felt reinforcement. The coating mass and the reinforcement contain a root-repellent substance to prevent roots perforating the waterproofing system. The upper side is finished with sand/talcum. A torch-on film protects the lower side (torch-on method).

Benefits

- Excellent dimensional stability and elastic performance
- Can be installed any time of the year, wide temperature tolerance
- Anti-root properties

Reinforcement:	Thickness:	Colour:	Application:
Polyester	4.0 mm	Sand	Heat Welded



COLPHENE BSW UNI NG

SBS – MODIFIED BITUMEN MEMBRANE

Colphene BSW is applied directly to the prepared substrate or form work before structural concrete is poured. TOP FACE is coated with specially treated silica sand. UNDERFACE is self-adhesive protected with a silicone release film.

Benefits

- Excellent adhesion to poured concrete
- Increased resistance to hydrostatic pressure

Dimensions:	Installation:	Underface:
1 x 8 m	Loose laid	Film

Thickness:	Surface:	Reinforcement:
4 mm	Sand	Polyester mat



COLPHENE BSW V

SBS – MODIFIED BITUMEN MEMBRANE

Colphene BSW is applied directly to the prepared substrate or form work before structural concrete is poured. TOP FACE is coated with specially treated silica sand. UNDERFACE is self-adhesive protected with a silicone release film.

Benefits

- Excellent adhesion to poured concrete
- Increased resistance to hydrostatic pressure

Dimensions:	Installation:	Underface:
1 x 10 m	Self-adhesive	Film

Thickness:	Surface:	Reinforcement:
3 mm	Sand	Composite



COLPHENE 3000

SBS – MODIFIED BITUMEN MEMBRANE

Self-adhesive waterproofing membrane composed of SBS modified bitumen and a tri-laminated woven polyethylene facer.

Benefits

- High tensile strength and puncture resistance
- Greater flexibility
- Cold-applied, flameless solution

Dimensions:	Installation:	Underface:
1 x 18.7 m	Self-adhesive	Self-adhesive strips

Thickness:	Surface:	Reinforcement:
1.5 mm	Tri-lam. woven poly	Non-reinforced



SOPRAMASTIC

SEALANT

SOPRAMASTIC is a moisture cured polyether sealant for use in approved multi-ply membrane and flashing assemblies. SOPRAMASTIC is composed of a polyether designed to be highly elastic to accommodate dynamic movement. SOPRAMASTIC is used as a general purpose adhesive and sealant for various applications.

Benefits

- Increased resistance to UV light
- Excellent adhesion on a wide variety of surfaces without a primer
- Can be applied on damp surfaces

Volume:	Colour:
310 ml	Black



SOPRAMASTIC ALU

SEALANT

SOPRAMASTIC ALU is a modified bitumen mastic for use in approved multi-ply membrane and flashing assemblies. SOPRAMASTIC ALU is composed of a proprietary formulation of elastomeric modified bitumen and solvents. SOPRAMASTIC ALU is aluminum hued for application to membrane edge and perimeter metal.

Benefits

- Increased resistance to UV light
- Excellent adhesion on a wide variety of surfaces without a primer
- Can be applied on damp surfaces

Volume:	Colour:
310 ml	Aluminium



ALSAN FLASHING

LIQUID WATERPROOFING MEMBRANE

ALSAN Flashing is a proprietary polyurethane bituminous resin specifically formulated for high performance liquid-applied flashings, other details and maintenance applications.

Benefits

- One component, no mixing required
- Superior protection against moisture
- Easy to apply, which reduces the cost of labour

Volume:	Colour:
3.78 L & 19 L	Brown



WPA K FLASHING PRESSURE SEAL (WITH FIXING PENETRATIONS)

Aluminium K Flashing is an extruded aluminum flashing with pre-punched holes, designed for the top termination of sheet membrane systems.

The unique design and pre-punched fixing holes makes the WPA K Flashing Pressure Seal easy to use and aesthetically pleasing when working with parapets and other exposed terminations.

Colour:	Size:	UOM:
Mill Finish	35mm x 3M	Length



WPA Coreflute Sheets

Polypropylene Copolymer Protection Board for membrane, retaining wall and flooring protection from subsequent after trades.

- 300 g/m²

Colour:	Size:	UOM:
Black	2mm x 1.8M x 1.2M	Each



WPA PRESSURE SEAL

Aluminium Pressure Seal is an aluminium extrusion designed for the termination of sheet membrane systems.

Colour:	Size:	UOM:
Mill Finish	40mm x 3M	Length



WPA DRAINAGE CELL

TWO-CORE DRAINAGE SHEET

WPA Drainage Cell is a two-core drainage sheet consisting of a non-woven geotextile filter layer thermally welded to a water impermeable, recycled HDPE (High Density Polyethylene) drainage membrane.

WPA Drainage Cell provides outstanding drainage and protection to the outside face of basement walls, preventing the build-up of water pressure and protecting the structure from aggressive water, chemicals and toxins.

Features

- Recycled and recyclable HDPE core.
- Prevents water pressure from bearing against the structure.
- Resistant to all chemicals normally found in the ground.
- Withstands stresses and movement acting as a slip membrane as the backfill settles.
- Extremely strong material, minimising the risk of damage.
- Very high compressive strength.
- ECO manufactured with no production waste.
- Suspended soil particles (fines) are filtered out by the geotextile layer.
- Quick and easy to install with a range of ancillary fixing and installation products.

Recommended Uses

- As the drainage layer of an externally applied waterproofing system when used in conjunction with sheet applied or liquid applied external tanking membrane to BS8102:2009.
- Protection of the structure from aggressive chemicals in the ground water.
- To prevent the build-up of ground water to retaining walls.

Colour:	Size:	UOM:
Black	1.1M x 20M (22M ²)	Roll





WPA 3460

POLYUREA PRIMER

WPA 3460 is a single component primer based on polyether polyol and modified MDI isocyanate. The primer is a polyurethane pre-polymer with a surplus of isocyanate which reacts with the moisture in the substrate to cure the product.

The product was designed as a low viscosity concrete primer for preparing substrates prior to applying the WPA 3400 spray applied membrane.

Product Characteristics

- Very high bond strength.
- Deep penetration into concrete.
- Brush, roller or spray applied.
- Single component.
- Low viscosity.
- Fast reactivity.

Colour:	Size:	UOM:
Violet	20 Litre	Drum



WPA 3400

POLYUREA SPRAY

WPA 3400 is a two component, 100% solids, rapid curing, spray applied, hybrid polyurea, elastomeric waterproofing membrane. WPA 3400 is comprised of a polyether polyol, amine chain extender and MDI based isocyanate. WPA 3400 rapidly cures to form a high performance seamless, tough, durable, elastomeric waterproofing membrane, with good crack bridging properties. WPA 3400 has excellent adhesion to most suitably primed building substrates and is suitable for above and below ground applications. WPA3400 is recommended to podiums, rooftops, retaining walls, planter boxes and water tanks.

Product Characteristics

- Class III membrane in accordance AS 4654.1.
- Rapid reactivity and curing time.
- Almost immediate return to service.
- Permanently flexible.
- Good chemical resistance.
- 100% solids.
- Excellent durability and abrasion resistance.
- Mercury free.

Colour:	Size:	UOM:
Pale Straw	42kg Kit	-



WPA ATC

POLYUREA TOP COAT

WPA ATC is an economic, aliphatic, single component, liquid applied, moisture cured, polyurethane coating. It has been formulated as a complimentary topcoat for WPA 3400 (Polyurea) and WPA Moisture cure polyurethane membranes. WPA ATC offers protection from degradation of the waterproofing membrane due to UV exposure. WPA ATC is recommended to rooftops, plant rooms, polyurea membranes and polyurethane membranes.

Product Characteristics

- UV stable.
- Excellent weatherability.
- Good colour retention.
- Fast curing.

Colour:	Size:	UOM:
Light Grey	18.9 Litre	Drum



WPA FC

FAST CURE POLYURETHANE SEALANT

WPA FC is a high performance, fast cure, one component polyurethane sealant. When cured it will form a tough, flexible seal and bond, capable of cyclic expansion and compression movement.

Product Characteristics

- Expansion/Contraction: 50% ($\pm 25\%$) as per ASTM C719.
- Service temperature -40°C to $+70^{\circ}\text{C}$.
- Excellent weathering and UV stability.
- Fast tack-free time and cure rate.
- High bond strength.
- Excellent adhesion to most materials including metals, concrete and brick.
- Paintable.
- Non-slumping.
- Resistant to fungal attack to AS1157.2.

Recommended Uses

- Sealing of floor joints in trafficable areas, including roads and runways.
- Sealing of vertical joints in precast concrete, brick, block work etc.
- Pick resistant - prisons, cells, schools and public amenities.
- Chemical resistant - service stations, hangers, aprons and bonded areas.
- Perimeter sealing of door and window framing.
- Adhesive for wide range of building and construction applications.
- Bond breaker/fillet for WPA moisture cured polyurethane membranes.

Colour:	Size:	UOM:
Grey	600 ml	Sausage





WPA SPUR

LOW MODULUS HYBRID SEALANT

WPA SPUR is a high quality, professional, universal, low modulus sealant based on hybrid technology. WPA SPUR cures under the influence of atmospheric moisture and is free of solvents and isocyanates with a very low VOC content. When cured it forms a tough, flexible seal and bond, capable of cyclic expansion and compression movement. Joints or fabrications formed with this sealant can be expected to extend and compress a total of 50% ($\pm 25\%$) of original joint dimensions to ASTM C719.

Product Characteristics

- Excellent adhesion without primer to most, even damp surfaces.
- Low modulus ($\pm 25\%$ joint movement).
- Moisture curing, almost odourless.
- Free of isocyanates, solvents and silicones.
- No shrinkage.
- No bubbling.
- Good resistance to UV, water and weather.
- Permanently elastic.
- High mechanical resistance.

Recommended Uses

- In situ concrete and render.
- Precast and tilt up panels, brickwork and block work.
- Plasterboard face and paper lined recessed edges.
- Fibre cement sheet.
- Aluminium windows.
- GRC, fiberglass and mostly specialty panel systems.
- Treated timber and stainless steel.
- Bond breaker/fillet sealant for use with selected waterproofing membranes from the wpa product range.

Colour:	Size:	UOM:
Grey	600 ml	Sausage





WPA MS

FLEXIBLE SILANE MODIFIED POLYMER SEALANT

WPA MS is a single component, moisture cured silane modified hybrid sealant free of solvents and isocyanates, with a very low VOC content. When cured it forms a tough, flexible seal and bond, capable of cyclic expansion and compression movement.

Product Characteristics

- Expansion/Contraction: 50% ($\pm 25\%$) as per ASTM C719.
- Service temperature -50°C to $+120^{\circ}\text{C}$.
- Excellent weathering and UV resistance and colour stability.
- Fast tack-free time and cure rate.
- High bond strength.
- Excellent adhesion to most materials including metals, concrete and brick.
- Resistant to fungal attack and does not support fungal growth.

Recommended Uses

- Sealing of floor joints in trafficable areas, including roads and runways.
- Sealing of vertical joints in precast concrete, brick, block work etc.
- Pick resistant - prisons, cells, schools and public amenities.
- Chemical resistant - service stations, hangers, aprons and bonded areas.
- Perimeter sealing of door and window framing.
- Adhesive for wide range of building and construction applications.
- Bond breaker/fillet for WPA moisture cured polyurethane membranes.

Colour:	Size:	UOM:
Grey	600 ml	Sausage

Sealant Quality Estimation Chart

Joint size in mm	Litre per metre run (bulk applications)	Metre run per 300ml cartridge	Metre run per 600ml cartridge	Joint size in mm	Litre per metre run (bulk applications)	Metre run per 300ml cartridge	Metre run per 600ml cartridge
5 x 5	0.025	12.4	24.0	20 x 10	0.200	1.55	3.0
5 x 10	0.050	6.20	12.0	20 x 15	0.300	1.04	2.0
5 x 15	0.075	4.20	8.0	20 x 20	0.400	0.78	1.5
10 x 10	0.100	3.10	6.0	25 x 12.5	0.310	1.00	2.0
10 x 15	0.150	2.00	4.0	25 x 15	0.380	0.81	1.6
10 x 20	0.200	1.55	3.0	25 x 20	0.500	0.62	1.2
10 x 25	0.250	1.24	2.4	25 x 25	0.630	0.50	0.9
15 x 10	0.150	2.06	3.9	30 x 15	0.450	0.69	1.3
15 x 15	0.225	1.35	2.7	30 x 20	0.600	0.51	1.0
15 x 20	0.300	1.04	2.0	30 x 25	0.750	0.42	0.8
15 x 25	0.375	0.82	1.6	40 x 20	0.800	0.39	0.8
15 x 30	0.450	0.69	1.3	40 x 25	1.000	0.31	0.6
15 x 40	0.600	0.51	1.0				

Coverage Calculation Formula: Joint Depth(mm) x Joint Width(mm) x Joint Length(m) / Cartridge Size(ml) = Units required



WPA LEAK-SEAL F400

POLYURETHANE INJECTION RESIN

WPA Leak-Seal F400 is a solvent and phthalate free, water reactive, hydrophobic, closed cell, low viscosity, shrink free, flexible, one component polyurethane injection resin designed to shut off water leaks.

Field of Application

- Shut off water leaks in concrete, brickwork and sewers where movement and settlement may occur.
- Water cut-off of water leaks in foundations such as diaphragm walls, piling sheets and secant piles.
- Sealing water-carrying cracks and joints in tunnel segments.
- Curtain grouting behind tunnel, concrete, brickwork and sewer walls.
- Injection of water cut-off membranes and liners in tunnels.

Features

- One component.
- Different reaction times are possible by adjusting the percentage of GEN ACC accelerator.
- The closed-cell structure of cured polyurethane ensures permanent flexible sealing of cracks and joints.
- Cured polyurethane is flexible, shrink-free and exhibits good chemical resistance [contact our Technical Service for Chemical Resistance].
- Cured polyurethane is harmless for the environment and resistant to biological attacks.

Item:	Size:	UOM:
Leak-Seal F400	3.8 Litre	Kit
Leak-Seal F400	18.9 Litre	Drum
Leak-Seal Accelerator	1.89 Litre	Drum



WPA LEAK-SEAL 2

POLYURETHANE INJECTION RESIN

WPA Leak-Seal 2 is a single component, low viscosity, flexible hydrophilic polyurethane foam injection resin.

Field of Application

- Sealing cracks in concrete structures through pressure injection.
- Sealing hairline cracks, expansion joints, wide cracks, pipe joints and pipe penetrations.
- In foundations such as diaphragm walls, piling sheets and secant piles.
- Curtain grouting behind tunnel, concrete, brickwork and sewer walls.
- Saturating dry oakum to create a flexible gasket for sealing pipe penetrations, joints and larger defects in concrete structures.

Features

- No catalyst required.
- Tenacious bond to wet concrete.
- High elongation.
- Thin enough to penetrate tight cracks.
- Moderately hydrophilic.
- Environmentally friendly (Phthalate free).
- Certified NSF 61-5 (Approved contact with drinking water).

Item:	Size:	UOM:
Leak-Seal 2	5 Litre	Drum
Leak-Seal 2	18.9 Litre	Drum



WPA LEAK-SEAL AG200

ACRYLIC INJECTION GEL

WPA Leak-Seal AG200 is an ultra-low viscosity acrylic injection resin, based on acrylic monomers. After injection, the resin gels in a few seconds to a few minutes based on the amount of activator/initiator added just before use.

The final injected product is a soft and slightly sticky crosslinked gel which becomes more jelly like as water is added to the base acrylic resin.

Field of Application

- Soil conditioning, stabilisation and coagulation.
- Curtain grouting behind existing structures.
- Filling of voids, hollow spaces and gaps behind structures.
- Filling and waterproofing gravel nests in concrete.
- Waterproofing of underground structures in concrete and masonry.
- Waterproofing cracks in rock formations.
- Injection of re-injectable injection hoses.
- Below grade expansion joints.

Features

- Non-toxic for the environment.
- Non flammable.
- No acrylamide.
- Very low viscosity.
- Durable in wet and dry conditions.

Item:	Size:	UOM:
Leak-Seal AG200	20 Litre	Kit

WPA LEAK-SEAL

ALUMINIUM INJECTION PACKER

Economical packer with removable anti-return valve in zerk fitting permits port to port travel technique by removing the zerk fitting. Bayset carries an extensive range of packers and couplers in many sizes and configurations.

Size:	UOM:
8mm x 50mm	Each
10mm x 100mm	Each
13mm x 150mm	Each

INJECTION SYSTEMS

Re-injectable Hose System



WPA Leak Seal

RE-INJECTABLE HOSE KIT

WPA Injection Hose is a re-injectable injection hose system, used to seal construction joints in concrete structures against water ingress. WPA Injection Hose is used to carry injection grout materials along the length of the hose and disperse it into the concrete joint via micro-ports along the hose. WPA Injection Hose is a highly durable, robust, single channel injection hose system, made from specially formulated PVC materials.

Construction joints that may require sealing against water ingress or require joint sealing in:

- Basements and below ground structures.
- Tunnels and underground vaults.
- Water and sewerage treatment plants.
- Water tanks and pools.
- Suspended slabs and roof slabs.

Kit Contains

- WPA Injection Hose x 30 lineal meters.
- WPA Feeder Hose x 2.0 lineal meters.
- WPA Injection Hose Connectors x 8.
- WPA Shotcrete Dual Injection Ports x 3.
- WPA Injection Hose Fastening Clips x 200.

Colour:	Size:	UOM:
Red	11mm x 30m	Kit

INJECTION HOSE COMPONENTS

All WPA Injection Hose Components can be purchased as individual items.

Colour:	Size:	UOM:
WPA Injection Hose	11mm x 120m	Roll
WPA Injection Feeder Hose	50m	Roll
WPA Injection Hose connector	-	Each
WPA Shotcrete Dual injection ports	-	Each
WPA Injection hose fastening Clips	-	100 pce Pack





WPA 2010

HYDROPHILIC SELF-ADHESIVE WATERSTOP

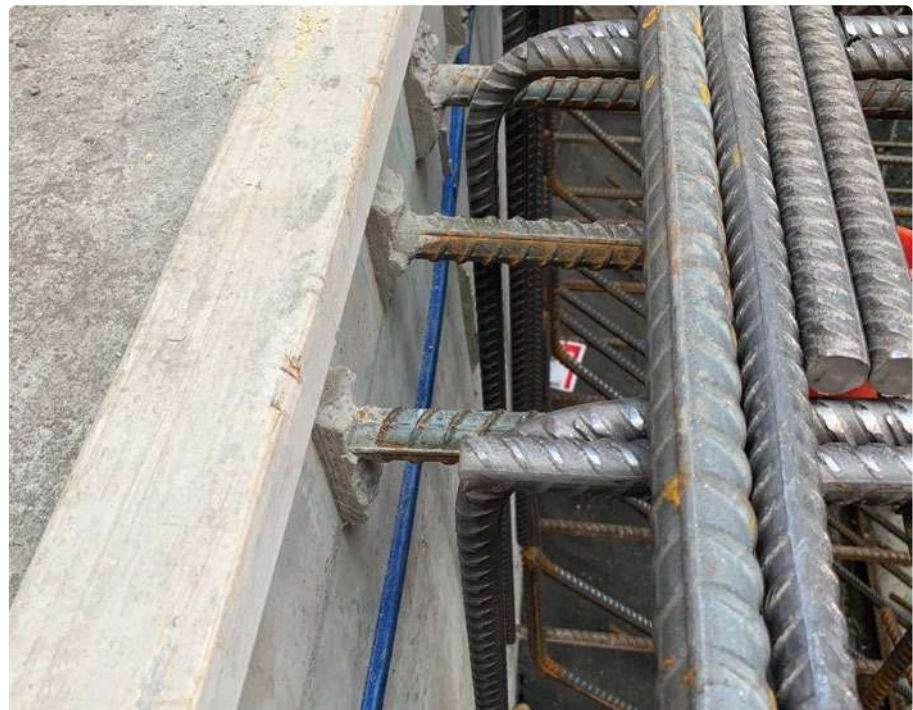
WPA 2010 is a new generation, self-adhesive, high performance acrylic polymer base expanding hydrophilic water stop. It's designed to stop water ingress through cast in place concrete structures. It expands up to 900% when in contact with water to form a positive seal against the concrete surface.

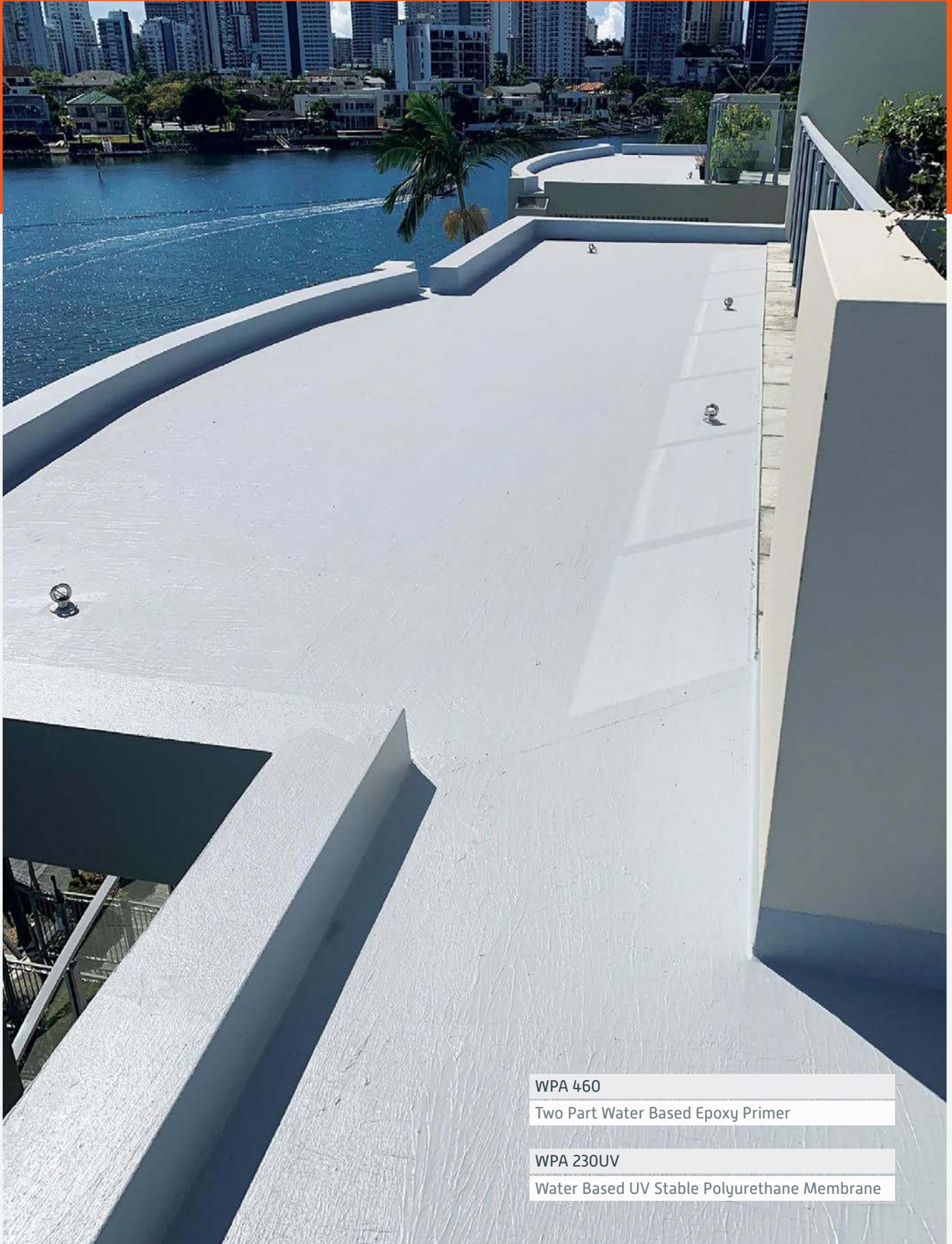
WPA 2010 will shrink back to it's original size when it dries and will re-expand on wetting. WPA 2010 is used for sealing of low movement and static construction joints for both horizontal and vertical applications including cold joints, wall to base connections, penetrations, sealing of openings and interface sections between existing and new concrete surfaces.

Features

- Easy to install with no priming required.
- Self-adhesive backing.
- Light weight.
- Easily handled rolls.
- Suitable for both fresh and salt water installations.

Colour:	Size:	UOM:
Blue	20mm x 10mm x 10m	Roll





WPA 460

Two Part Water Based Epoxy Primer

WPA 230UV

Water Based UV Stable Polyurethane Membrane



TILING PRODUCTS AUSTRALIA





TPA 301R

GENERAL PURPOSE RUBBER MODIFIED TILE ADHESIVE

TPA 301R is a cost effective, flexible, powdered adhesive for wall and floor applications. Suitable to use over concrete, cement render, screeds, fibrous cement sheeting, plasterboard and suitable WPA waterproofing membranes. It is suitable for internal and external applications including bathrooms, toilets, laundries, kitchens, decks and verandas. TPA 301R is suitable for most types of moisture stable tiles in domestic and general tiling applications. C1S1 classification.

Recommended Uses

- All moisture stable tile types. Suitable tiles include porcelain, ceramic, terracotta, terrazzo, glass and stone.
- General tiling.
- Internal and external, wall and floor.
- Concrete.
- Render and screeds.
- Fibre cement.
- Plasterboard.
- WPA waterproofing membranes.

Colour:	Size:	UOM:
Off White	20 Kg	Bag



TPA 401M

COMMERCIAL GRADE MASTIK TILE ADHESIVE

TPA 401M is a white, flexible, powdered adhesive for wall and floor applications. It has superior anti-slip properties, easily holding 600mm x 600mm wall tiles on vertical surfaces. Suitable to use over concrete, cement render, screeds, fibrous cement sheeting, plasterboard and suitable WPA waterproofing membranes. It is suitable for internal and external applications including bathrooms, toilets, laundries, kitchens, decks and verandas. TPA 401M is suitable for most types of moisture stable tiles in domestic and general tiling applications. C2S1ET Classification.

Recommended Uses

- All moisture stable tile types. Suitable tiles include porcelain, ceramic, terracotta, terrazzo, glass and stone.
- High traffic areas.
- Internal and external, wall and floor.
- Concrete.
- Render and screeds.
- Fibre cement.
- Plasterboard.
- WPA waterproofing membranes.

Colour:	Size:	UOM:
White	20 Kg	Bag



TPA 501R

HIGH YIELD COMMERCIAL GRADE TILE ADHESIVE

TPA 501R is a cost effective, high coverage, flexible, powdered adhesive for wall and floor applications. Suitable to use over concrete, cement render, screeds, fibrous cement sheeting, plasterboard and suitable WPA waterproofing membranes. It is recommended for a wide range of internal and external applications including bathrooms, toilets, laundries, kitchens, decks and verandas. TPA 501R is suitable for most types of tiles, including porcelain. C2S1ET Classification.

Recommended Uses

All moisture stable tile types. Suitable tiles include porcelain, ceramic, terracotta, terrazzo, glass and stone.

- General tiling
- Internal and external, wall and floor.
- WPA waterproofing membranes
- Concrete
- Render and early age [green] screeds
- Fibre cement
- Plasterboard

Colour:	Size:	UOM:
Off White	20 Kg	Bag



TPA Lite

COMMERCIAL GRADE MASTIK TILE ADHESIVE

TPA Lite is a premium grade, white, fibre reinforced, flexible cement based tile adhesive, based on a light weight formulation. It is recommended for interior and exterior wall and floor applications including facades, balconies, bathrooms, toilets, laundries. TPA Lite is suitable to use over concrete, cement render, screeds, fibrous cement sheeting, plasterboard and suitable WPA waterproofing membranes. TPA Lite is suitable for most types of moisture stable tiles in domestic and commercial tiling applications. C2TES2 Classification.

Recommended Uses

All moisture stable tile types. Suitable tiles include porcelain, ceramic, terracotta, terrazzo, glass and stone.

- High traffic
- Internal and external
- Swimming pools
- Concrete
- Acoustic underlays
- Masonry block
- Render and screeds
- Fibre cement
- Plasterboard
- Wall and floor
- WPA waterproofing membranes
- Existing tiles

Colour:	Size:	UOM:
Off White	20 Kg	Bag



TPA 201M

PRE-MIXED FLEXIBLE TILE ADHESIVE

TPA 201M is a cost effective, pre-mixed, white, flexible tile adhesive, suitable for most internal thin bed wall applications. It is recommended for applications including bathroom, toilet, laundry and kitchen walls. TPA 201M is suitable for a variety of tiles, including ceramic, stone and porcelain. D1TE Classification.

Recommended Uses

- Internal wall tiling, Concrete & Render
- Fibre cement
- Plasterboard
- Over suitable WPA waterproofing membranes
- Maximun tile size 300mm x 300mm

Colour:	Size:	UOM:
White	22.5 Kg	Drum



TPA

TRU COLOUR GROUT

TPA Tru Colour Grout is a high-performance stain and efflorescence resistant grout. It is designed for use with most types of ceramic, mosaic, natural stone and glass tiles. It can be used on internal and external wall and floor surfaces and used in joints from 1-15mm wide. TPA Tru Colour Grout is suitable for commercial and domestic applications. Can be used for all moisture stable tile types. Suitable tiles include porcelain, ceramic, terracotta, terrazzo, glass and stone.

Recommended Uses

All moisture stable tile types. Suitable tiles include porcelain, ceramic, terracotta, terrazzo, glass and stone.

- Commercial high traffic areas
- Kitchens
- Bathrooms
- Ensuites
- Laundries
- Powder rooms

Colour:	Size:	UOM:
Light Grey	10 Kg	Bag
Mid Grey	10 Kg	Bag
Charcoal	10 Kg	Bag



TPA White

TRU WHITE SUPERFINE GROUT

TPA Tru White Superfine Grout is a premium grade, unsanded, smooth, bright white, cement-based grout.

It is designed for use with most types of ceramic, mosaic, and natural stone tiles. TPA Tru White Superfine Grout is suitable for grouting wall tiles in internal applications with joint widths between 1-3mm.

Recommended Uses

All moisture stable tile types. Suitable tiles include porcelain, ceramic, terracotta, terrazzo, glass and stone.

- Kitchens
- Bathrooms
- Powder rooms
- Ensuites
- Laundries

Colour:	Size:	UOM:
Bright White	10 Kg	Bag



TPA

TRU COLOUR SANITARY SILICONE

TPA Tru Colour Sanitary Silicone is a mould resistant, non-diluted, high performance, UV resistant, neutral cure silicone sealant. Designed for sealing joints in ceramics, porcelain, vitreous china, or metal in wet areas, kitchens, bathrooms, laundries, toilets or wherever fungal growth might occur. It reacts with atmospheric moisture to produce a formed in place silicone rubber seal.

Recommended Uses

- Glass
- Porcelain & ceramic tiles
- Stainless steel
- Metal fixtures, including shower screen frames
- Painted and enamel surfaces

Colour:	Size:	UOM:
Bright White	300 ml	Cartridge
Light Grey	300 ml	Cartridge
Mid Grey	300 ml	Cartridge
Charcoal	300 ml	Cartridge



TPA

380 SANITARY SILICONE

TPA 380 Sanitary Silicone is a neutral curing silicone adhesive and sealant designed to resist the growth of mildew and mould where high humidity and temperature conditions exist. Perfect applications are bathrooms, kitchens and laundries on vitreous china, ceramic tiles, enamel painted surfaces and some plastics. It reacts with atmospheric moisture to produce a formed in place silicone rubber seal.

Recommended Uses

- Glass
- Ceramic tiles
- Stainless steel
- Fibreglass
- Painted & enamel surfaces

Colour:	Size:	UOM:
Bright White	300 ml	Cartridge
Light Grey	300 ml	Cartridge
Translucent	300 ml	Cartridge

TPA Selector Chart

SUBSTRATE	TPA 201M	TPA 301R	TPA 401M	TPA 501R	TPA Lite
WALLS	✓	✓	✓	✓	✓
Concrete	✓	✓	✓	✓	✓
Render	✓	✓	✓	✓	✓
Brick	✓	✓	✓	✓	✓
Plasterboard	✓	✓	✓	✓	✓
Fibre Cement	✓	✓	✓	✓	✓
Masonry Block	✓	✓	✓	✓	✓
Approved Waterproofing Membranes	✓ Δ	✓	✓	✓	✓
wedi Panels			✓		✓
FLOORS					
Concrete		✓	✓	✓	✓
Screed		✓	✓	✓	✓
Early Age Screed			✓	✓	✓
Fibre Cement		✓	✓	✓	✓
AAC		✓	✓	✓	✓
Approved Waterproofing Membranes		✓	✓	✓	✓
Approved Acoustic Underlays			✓		✓
wedi Bases			✓		✓
APPLICATIONS	TPA 201M	TPA 301R	TPA 401M	TPA 501R	TPA Lite
Interior Dry Areas	✓	✓	✓	✓	✓
Interior Wet Areas	✓ Δ	✓	✓	✓	✓
Exterior		✓ ◇	✓ ◇	✓ ◇	✓ ◇
Driveways					✓ ◇
Shopping Centre Floors			✓	✓	✓
Full Immersion (Swimming Pools)					✓
Existing Tiles					✓ ∅
Thin Panel Tiles					✓

Δ Tiles must be highly absorbant. ◇ Sufficient falls in substrate required. ∅ Additional preparation may be required.

TPA Grout Consumption

Tile Size (mm)	Quantity of Grout Required kg/m ² Joint Width			
	1.5mm	3mm	8mm	15mm
20 x 20 x 4	0.96	1.92	5.12	9.60
50 x 50 x 6	0.55	1.20	3.07	5.76
150 x 150 x 6	0.20	0.40	1.02	1.92
200 x 100 x 6	0.21	0.43	1.15	2.16
200 x 200 x 6	0.15	0.30	0.77	1.44
300 x 300 x 6	0.10	0.20	0.51	0.96
400 x 400 x 6	0.07	0.14	0.38	0.72
450 x 450 x 6	0.06	0.13	0.34	0.64
300 x 300 x 10	0.16	0.32	0.85	1.60
400 x 400 x 10	0.12	0.24	0.64	1.20
450 x 450 x 10	0.11	0.21	0.57	1.07
300 x 600 x 10	0.12	0.21	0.64	1.20
600 x 600 x 10	0.08	0.16	0.43	0.80
400 x 800 x 10	0.09	0.18	0.48	0.90
800 x 800 x 10	0.06	0.12	0.32	0.60
900 x 900 x 10	0.05	0.11	0.28	0.53
1200 x 1200 x 10	0.04	0.08	0.21	0.40



TRADIES TRUST





HighBuild Repair Mortar

CEMENTITIOUS REPAIR MORTAR FOR VERTICAL OR OVERHEAD REPAIRS

Penapatch High Build HB is a high strength; high build shrinkage compensated polymer modified repair mortar. Penapatch High Build HB is designed to be used for vertical and overhead applications. Penapatch High Build HB has high, ultimate compressive strength and high abrasion resistance. The specially selected cements and polymers contained in Penapatch High Build HB provide a mortar with strong adhesion to concrete and masonry on vertical and overhead substrates with negligible shrinkage. Penapatch High Build HB requires the addition of water ONLY.

Recommended Uses

- High build repairs for vertical and overhead repairs
- Repairing damaged concrete panels where structural strength is required
- Repairs to spalled or deteriorated concrete caused by corrosion of steel reinforcement
- Repairs requiring low permeability and high resistance to chlorides and carbon dioxide
- Can be applied from 12mm to 70mm on vertical surfaces

Features & Benefits

- High build repairs achievable in a single application
- Low permeability providing protection from chloride attack and carbonation
- High strength and high abrasion resistance
- Dimensionally stable
- Excellent workability
- Shrinkage compensated allowing for long term dimensional stability
- Eliminates the need for formwork
- Can be applied by dry or wet process, achieving high build with exceptional compaction and enhanced performance
- May be coated with Aftek range of protective coatings
- Internal or external applications
- Pre-bagged eliminates any on-site mixing variation

Performance Properties

Appearance	Grey Powder
Colour	Dark Grey
Application temperature	Minimum 5°C, Maximum 35°C
Application depth	12mm to 70mm
Fresh wet density kg/m ³	Approx 1570
Traffic time	48 Hours at 20°C
Bond strength	>3.5MPa
Initial set	3 Hours
Final set	5 Hours

Compressive Strength

Age (Days)	Compressive strength MPa	Flexural strength MPa
1	7	1.2
7	15	2.5
28	27	3.8



PenaPatch Structural HB50

HIGH BUILD, HIGH STRENGTH, POLYMER MODIFIED STRUCTURAL REPAIR MORTAR GROUT

Penapatch HB50 is a high strength, high build, medium weight shrinkage compensated structural repair mortar. Penapatch HB50 is designed to be used for vertical or horizontal applications. Penapatch HB50 has high, ultimate compressive strength and high abrasion resistance. The specially selected cements and polymers contained in Penapatch HB50 provide a mortar with strong adhesion to concrete and masonry on vertical and horizontal substrates with extremely low shrinkage and relatively low density.

Recommended Uses

- High build repairs for vertical, overhead and horizontal repairs
- Repairs requiring high compressive strength
- Repairing damaged concrete panels where structural strength is required
- High build repair applications 5mm to 80mm for vertical surfaces
- May be applied in verticals up to 120mm in small pockets or with the aid of formwork
- Repairs to spalled or deteriorated concrete caused by corrosion of steel reinforcement
- Repairs requiring low permeability and high resistance to chlorides and carbon dioxide

Features & Benefits

- High ultimate compressive strength
- High build repairs achievable in a single application
- Low permeability providing protection from chloride attack & carbonation
- High strength and high abrasion resistance
- Dimensionally stable with Excellent workability
- Shrinkage compensated allowing for long term dimensional stability
- Eliminates the need for formwork
- Can be applied by dry or wet process, achieving high build with exceptional compaction and enhanced performance
- May be coated with Aftek range of protective coatings
- Internal or external applications
- Pre-bagged eliminates any on-site mixing variation

Performance Properties

Appearance	Grey Powder
Colour	Grey
Application temperature	Minimum 5°C, Maximum 35°C
Application depth	5mm to 100mm
Fresh wet density kg/m ³	Approx 1800
Traffic time	48 Hours at 20°C
Bond strength	>3.5MPa
Initial set	3 Hours
Final set	5 Hours

Compressive Strength

Age (Days)	Compressive strength MPa	Flexural strength MPa
1	22	4.5
7	33	6.5
28	55	7.5



PenaPatch Structural HB80

HIGH BUILD, HIGH STRENGTH, POLYMER MODIFIED STRUCTURAL REPAIR MORTAR GROUT

Penapatch Structural HB80 is a high strength; high build shrinkage compensated structural repair mortar. Structural HB80 is designed to be used for vertical or horizontal applications. Structural HB80 has high, ultimate compressive strength and high abrasion resistance. The specially selected cements and polymers contained in Structural HB80 provide a mortar with strong adhesion to concrete and masonry on vertical and horizontal substrates with negligible shrinkage.

Recommended Uses

- High build repairs for vertical, overhead and horizontal repairs
- Repairs requiring high compressive strength
- Repairing damaged concrete panels where structural strength is required
- High build repair applications 5mm to 80mm for vertical surfaces
- May be applied in verticals up to 160mm in small pockets or with the aid of formwork
- Repairs to spalled or deteriorated concrete caused by corrosion of steel reinforcement
- Repairs requiring low permeability and high resistance to chlorides and carbon dioxide
- Can be applied up to 180mm in horizontal surfaces

Features & Benefits

- High ultimate compressive strength
- High build repairs achievable in a single application
- Low permeability providing protection from chloride attack & carbonation
- High strength and high abrasion resistance
- Dimensionally stable with excellent workability
- Shrinkage compensated allowing for long term dimensional stability
- Eliminates the need for formwork
- Shrinkage compensated
- Can be applied by dry or wet process, achieving high build with exceptional compaction and enhanced performance.
- May be coated with Aftek range of protective coatings
- Internal or external applications
- Pre-bagged eliminates any on-site mixing variation

Performance Properties

Appearance	Grey Powder
Colour	Dark Grey
Application temperature	Minimum 5°C, Maximum 35°C
Application depth	5mm to 100mm
Fresh wet density kg/m ³	Approx 2200
Traffic time	48 Hours at 20°C
Bond strength	>5MPa
Initial set	3 Hours
Final set	5 Hours

Compressive Strength

Age (Days)	Compressive strength MPa	Flexural strength MPa
1	22	5.5
7	68	7.5
28	80	9.5



PenaPatch Panel LW

HIGH BUILD, POLYMER MODIFIED, FIRE RATED, LIGHT WEIGHT REPAIR MORTAR

Penapatch Panel LW is a fine filled fire rated, polymer modified, cementitious mortar, specifically formulated to provide cover for joiner plates in tilt slab or pre-cast construction. Panel LW is also used for repair of damaged concrete. The light weight aggregates used in Panel LW allow for a build up to 100mm in one application. The specially selected cements and polymers contained in Panel LW provide a mortar with strong adhesion to concrete and masonry on vertical substrates with negligible shrinkage. Panel Patch LW requires the addition of water only. Panel LW may be sanded to produce a smooth surface texture prior to painting or application of a render.

Recommended Uses

- Patching repairs & covering metal joining plates in tilt up or pre-cast panel
- Repairing any damaged concrete or pre-cast or tilt up panels that is non-structural
- Repairs requiring high build application up to 100mm for vertical applications
- General high build up repairs where a non-structural repair mortar is required

Features & Benefits

- High build application up to 100mm for vertical applications
- Good adhesion to substrates, high bond strength
- High build repairs can be completed in one application
- Eliminates the need for formwork
- Shrinkage compensated resulting in long term dimensional stability
- May be coated with the Aftek range of protective & decorative coatings
- Fire rated
- 4 hour fire rating to AS1530.4

Performance Properties

Appearance	Light Grey Powder
Colour	Grey
Application temperature	Minimum 5°C, Maximum 35°C
Application depth	5mm to 100mm
Fresh wet density kg/m ³	Approx 900
Traffic time	48 Hours at 20°C
Bond strength	>5MPa
Initial set	3 Hours
Final set	5 Hours

Compressive Strength

Age (Days)	Compressive strength MPa	Flexural strength MPa
1	4.0	3.0
7	18	5.0
28	20	7.1



Fairing Coat Mortar

CEMENTITIOUS FAIRING COAT FOR PRE-CAST & OFF-FORM CONCRETE

Fairing Coat Mortar is a fine textured, fast setting formulated for repair of damaged concrete where only a thin layer is required. The specially selected cement and polymer contain Fairing Coat Mortar produce a fast setting mortar with exceptional adhesion to concrete and masonry materials with negligible shrinkage. Fairing Coat Mortar cures to an exceptionally smooth textured surface that does not reflect through subsequent applied architectural coatings.

Recommended Uses

- Fairing Coat Mortar can be applied up to 5mm in a single application.
- Fairing Coat to infill over surface imperfections on concrete
- Repair to defects in concrete surface
- For use of vertical application
- Can be applied over other Aftek mortars to produce a smooth uniform surface
- Stand alone or left exposed application that does not require an additional coating
- Internal and external application

Features & Benefits

- Fast setting
- Smooth textured surface – smooth finish can be achieved
- Excellent bond to concrete – high bond strength to concrete
- Easy to use – simply add water
- Durable repair
- Excellent workability
- Can be over coated with conventional surface coatings
- Can be left exposed as finished final coat

Performance Properties

Appearance	Grey Powder
Colour	Grey / Off white / White
Application temperature	Minimum 5°C, Maximum 35°C
Application depth	Maximum 5mm
Fresh wet density kg/m ³	Approx 900
Traffic time	48 Hours at 20°C
Bond strength	>5MPa
Initial set	3 Hours
Final set	5 Hours
Compressive strength	28 Days = 20MPa



FastSet C

FAST SETTING REPAIR MORTAR FOR CONCRETE PAVEMENTS & FLOORS

Fastset C is a pre-packed cementitious mortar specifically formulated for the quick and reliable repair of damaged concrete pavements and industrial floors. The specially selected cements and hard wearing aggregates contained in Fastset C allows the application of large areas with exceptional adhesion to concrete and masonry materials with negligible shrinkage.

Fastset C may be used as a trafficable topping for existing concrete surfaces.

Recommended Uses

- For repairs of both small and large localised patches
- Repairs of concrete roads and pavements, warehouse flooring and ramps
- Maintenance repairs of areas 12mm to 50mm in depth of one layer
- Repairs of concrete floors, overlays and concrete spalling
- Repair and patching of damaged or worn concrete
- Areas that require minimal traffic and floor disruptions
- Areas of floors that may be exposed to high levels of abrasion and impact

Features & Benefits

- Single part system, simply add water and mix
- Exceptional bond strength to substrates
- Internal and External application
- Can accept vehicular traffic after 2 hours due to rapid strength gain
- Weather, element and abrasion resistant
- High Build repairs can be completed in one application
- Low permeability gives protection against chlorides
- Shrinkage Compensated

Performance Properties

Appearance	Light Grey Powder
Colour	Grey (when mixed)
Application temperature	Minimum 5°C, Maximum 30°C
Application depth	12mm to 50mm
Fresh wet density kg/m ³	Approx 900
Traffic time	48 Hours at 20°C
Bond strength	>5MPa
Initial set	3 Hours
Final set	5 Hours

Compressive Strength

Age (Days)	Compressive strength MPa	Flexural strength MPa
1	4.0	3.0
7	18	5.0
28	20	7.1



PenaFlow Panel Grout

GENERAL PURPOSE, NON SHRINK, CLASS A, CEMENTITIOUS GROUT

Penaflow Panel Grout is a Class A construction grout based on a blend of Portland cement, high quality graded aggregates and additives, which control expansion whilst the grout is in a plastic state.

Recommended Uses

- General purpose grout
- Grouting underneath precast panels and concrete sections
- Anchor bolts filling
- Filling in cavities, gaps and base infill's
- Filling in core holes created in panels by core drilling
- Suitable for block work in core filling

Features & Benefits

- Shrinkage compensated
- Gaseous expansion in plastic state eliminates shrinkage and settlement
- Non-metallic iron content eliminates staining
- Can be dry packed, rammed, trowelled or poured
- Pump able for larger applications
- Grouting from 20mm to 150mm in a single application
- Australian made

Performance Properties

Appearance	Grey Powder	
Colour	Grey (when mixed)	
Application temperature	Minimum 10°C, Maximum 30°C	
Grout depth	20mm to 150mm	
	Trowellable	Flowable
Fresh wet density kg/m ³	2190	2190
Bond strength	>10MPa 28days	>10MPa 28days
Initial set	3 Hours	4.5 Hours
Final set	4.5 Hours	6.5 Hours

Compressive Strength

Age (Days)	Compressive strength MPa	Flexural strength MPa
1	>20	>1.5
7	>40	>8.5
28	>55	>9.5



PenaTech GP Grout

HIGH STRENGTH, CLASS C, CEMENTITIOUS GROUT

Aftek Penaflow GP Grout is a Class A construction grout based on a blend of Portland cement, high quality graded aggregates and additives, which control expansion whilst the grout is in a plastic state.

Recommended Uses

- Machine base plates where critical grouting application is required
- Applications with dynamic loads where continuous vibrations are present
- Bridge bearing pads
- Crane rail sole plates
- Pre-cast concrete sections/ panels
- Anchor bolt fillings
- Filling in core holes, cavities, gaps and base infill's
- High performance structural grouting

Features & Benefits

- High early and ultimate strength
- Exceptional flow characteristics, good flow retention
- High ultimate (28 day) strength
- Shrinkage compensated in both plastic and hardened state
- Non-metallic wires content eliminates staining
- Complies with ASTM C1107-91 and CRDC-621-82
- Good impact and thermal resistance
- Can be dry packed

Performance Properties

Appearance	Light Grey Powder	
Colour	Grey (when mixed)	
Application temperature	Minimum 5°C, Maximum 30°C	
Grout depth	10mm to 200mm	
	Trowellable	Flowable
Fresh wet density kg/m ³	2220	2200
Bond strength	>7MPa 28days	>8MPa 28days
Initial set	2 Hours	2.5 Hours
Final set	3.5 Hours	4 Hours

Compressive Strength

Age (Days)	Compressive strength MPa		Flexural strength MPa	
	Trowellable	Flowable	Trowellable	Flowable
1	>30	>20	>3.0	>4.0
7	>70	>45	>6.0	>6.0
28	>80	>60	>7.0	>7.0



PenaFlow UW Grout

HIGH PERFORMANCE, NON SHRINK, CEMENTITIOUS GROUT

Penaflow Grout UW is a high performance construction grout based on a blend of Portland cement, high quality graded aggregates and additives, which control expansion whilst the grout is in a plastic state. Penaflow Grout UW can be used underwater or in tidal zone application. Penaflow Grout UW will not wash out when submerged in water and is ideal for underwater concrete piling.

Recommended Uses

- Underwater grout for immersed or above water
- Grouting underneath precast panels and concrete sections
- Anchor bolts filling
- Filling in cavities, gaps and base infill's
- Displaces water
- Re-instatement of Dam walls
- Concrete piling underwater
- Wharf columns re-instatement
- Concrete piling in wet/ damp conditions

Features & Benefits

- Shrinkage compensated
- Does not wash out in water
- Gaseous expansion while in plastic state eliminates shrinkage and settlement
- Displaces water
- Non-metallic iron content eliminates staining
- Can be dry packed, rammed, troweled or poured
- Pump able for larger applications
- Lower cement/ water ratio, reduces drying shrinkage
- Dimensionally stable

Performance Properties

Appearance	Grey Powder	
Colour	Grey (when mixed)	
Application temperature	Minimum 10°C, Maximum 30°C	
Grout depth	20mm to 150mm	
	Trowellable	Flowable
Fresh wet density kg/m ³	2190	2190
Bond strength	>10MPa 28days	>10MPa 28days
Initial set	3 Hours	4.5 Hours
Final set	4.5 Hours	6.5 Hours

Compressive Strength

Age (Days)	Compressive strength MPa	Flexural strength MPa
1	>25	>1.5
7	>45	>8.5
28	>60	>9.5



Penatech HS Grout

HIGH STRENGTH CLASS C CEMENTITIOUS GROUT

Penatech HS Grout is a high strength, precision Class C grout. Non shrink dual expansion compensates for shrinkage in both the plastic and hardened state.

Recommended Uses

- Machine base plates where critical grouting application is required
- Applications subject to dynamic loads and where continuous vibrations is present
- Bridge bearing pads
- Crane rail sole plates
- Pre-cast concrete sections/ panels
- Anchor bolt fillings
- Filling in core holes, cavities, gaps and base infill's
- High performance structural grouting

Features & Benefits

- High early and ultimate strength
- Exceptional flow characteristics, good flow retention
- High ultimate (28 day) strength
- Shrinkage compensated in both plastic and hardened state
- Non-metallic wires content eliminates staining
- Complies with ASTM C1107-91 and CRDC-621-82
- Good impact and thermal resistance
- Can be dry packed

Performance Properties

Appearance	Light Grey Powder	
Colour	Grey (when mixed)	
Application temperature	Minimum 5°C, Maximum 30°C	
Grout depth	10mm to 200mm	
	Trowellable	Flowable
Fresh wet density kg/m ³	2220	2200
Bond strength	>9.5MPa 28days	>10MPa 28days
Initial set	2 Hours	2.5 Hours
Final set	3.5 Hours	4 Hours

Compressive Strength

Age (Days)	Compressive strength MPa		Flexural strength MPa	
	Trowellable	Flowable	Trowellable	Flowable
1	>35	>25	>4.0	>3.9
7	>75	>50	>8.82	>7.0
28	>85	>65	>9.8	>9.5



Penatech HS Plus Grout

VERY HIGH STRENGTH CLASS C CEMENTITIOUS GROUT

Penatech HS Grout plus is a high strength, precision Class C grout. Non shrink dual expansion compensates for shrinkage in both the plastic and hardened state.

Recommended Uses

- Machine base plates where critical grouting application is required
- Applications subject to dynamic loads and where continuous vibrations is present
- Bridge bearing pads
- Crane rail sole plates
- Pre-cast concrete sections/ panels
- Anchor bolt fillings
- Filling in core holes, cavities, gaps and base infill's
- High performance structural grouting

Features & Benefits

- High early and ultimate strength
- Exceptional flow characteristics, good flow retention
- High ultimate (28 day) strength
- Shrinkage compensated in both plastic and hardened state
- Non-metallic wires content eliminates staining
- Complies with ASTM C1107-91 and CRDC-621-82
- Good impact and thermal resistance
- Can be dry packed

Performance Properties

Appearance	Light Grey Powder	
Colour	Grey (when mixed)	
Application temperature	Minimum 5°C, Maximum 30°C	
Grout depth	10mm to 200mm	
	Trowellable	Flowable
Fresh wet density kg/m ³	2220	2200
Bond strength	>9.5MPa 28days	>10MPa 28days
Initial set	2 Hours	2.5 Hours
Final set	3.5 Hours	4 Hours

Compressive Strength

Age (Days)	Compressive strength MPa		Flexural strength MPa	
	Trowellable	Flowable	Trowellable	Flowable
1	>45	>35	>4.0	>3.9
7	>80	>65	>8.8	>7.0
28	>95	>85	>9.8	>9.5



Penatech HES Grout

HIGH EARLY STRENGTH, CLASS C, CEMENTITIOUS GROUT

Penatech HES Grout is a Class C high quality, free flowing non shrink, high early strength development and high ultimate strength gain cementitious grout.

Recommended Uses

- Cementitious grouting where high early strength is required
- Heavy duty support grout beneath high load machine base plates
- Precision grouting application
- Anchoring bolt holes
- Bridge bearing pads
- Crane rail plates
- Pre-cast concrete sections
- Cavities, gaps and recesses
- Rapid reinstatement of equipment, minimizes downtime
- Grouting requiring dynamic load bearing and applications subject to continuous vibration

Features & Benefits

- High early strength even at low temperatures
- Dual expansion compensates for shrinkage in the plastic and hardened state
- Exceptional flow characteristics
- Rapid strength gain and set times
- Variable consistency obtainable
- Equipment and machinery can be reinstated after 2 hours
- Non-metallic eliminates staining
- Good impact and thermal resistance
- Complies with US Corp of Engineers A CRDC-621-82A and ASTM C1107-91 for expansion
- Pre bagged material overcomes potential on site batching variation

Performance Properties

Appearance	Light Grey Powder	
Colour	Grey (when mixed)	
Application temperature	Minimum 5°C, Maximum 30°C	
Grout depth	10mm to 150mm	
	Trowellable	Flowable
Fresh wet density kg/m ³	2220	2200
Bond strength	>9.5MPa 28days	>10MPa 28days
Initial set	2 Hours	2.5 Hours
Final set	3.5 Hours	4 Hours

Compressive Strength

Age (Days)	Compressive strength MPa		Flexural strength MPa	
	Trowellable	Flowable	Trowellable	Flowable
1	>60	>44	>5.3	>3.6
7	>75	>50	>8.82	>7.0
28	>85	>65	>9.8	>9.5



PenaTech LA Grout

VERY HIGH STRENGTH CLASS C CEMENTITIOUS GROUT

High performance cementitious grout, designed for large or deep pour applications.

Recommended Uses

- Grouting where high flow, high application thickness is required
- Heavy duty support beneath machine base plates
- Bridge bearing and crane rails
- Anchoring bolts, bars and fittings
- Underpinning
- Applications subject to continuous vibrations and dynamic loads
- Precision grouting application

Features & Benefits

- Dual expansion compensates for shrinkage in the plastic & hardened state
- Excellent flow retention, for large application thicknesses
- Ready to use, pre-mixed, and requires only the addition of water
- Can be mixed flowable or fluid
- No metallic content to cause staining

Performance Properties

Appearance	Light Grey Powder	
Colour	Grey (when mixed)	
Application temperature	Minimum 5°C, Maximum 30°C	
Grout depth	10mm to 800mm	
	Trowellable	Flowable
Fresh wet density kg/m ³	1900	1918
Bond strength	>11.5MPa 28days	>10.5MPa 28days
Initial set	4.5 Hours	5.5 Hours
Final set	6.0 Hours	7.0 Hours

Compressive Strength

Age (Days)	Compressive strength MPa		Flexural strength MPa	
	Trowellable	Flowable	Trowellable	Flowable
1	>40	>22	>4.1	>3.9
7	>75	>59	>10.5	>9.8
28	>83	>67	>11.5	>10.5



Epigrout S

HIGH PERFORMANCE, HIGH STRENGTH, FLUID EPOXY GROUT

Epigrout S is a two component, high performance, pre filled epoxy grout , suitable for use as a pourable or fluid grouting material. Aftek F4 and F6 fillers may be added to produce a trowellable high build mortar or a pourable flowable grout.

Recommended Uses

- Suitable for use on damp substrates
- Grouting heavy duty supports beneath crane and transporter rails
- Anchoring bolts, bars and fixings
- Bonding new to old concrete
- Adhesive promoter
- Filling in holes, cavities
- Repairing cracks in horizontal surfaces
- Grouting off column bases
- As a high strength repair mortar when mixed with Patchfix Filler
- As a protective coating for concrete and steel structures
- Reinforcement bar primer
- Corrosion protection on steel reinforcement prior to application of concrete repair mortar

Features & Benefits

- High flow properties
- Bonds to damp substrates
- Rapid hardening and strength gain
- High chemical resistance
- Pre-measured kits make for ease of use
- High tensile and compressive strength
- 100% solid epoxy
- Excellent adhesion to most substrates
- Cures at temperatures down to 5oC
- Negligible shrinkage
- High mechanical strength
- Solvent free
- High early strength

Performance Properties

Appearance	PART A - White thixotropic liquid PART B - Black thixotropic liquid
Application temp.	Minimum 5°C, Maximum 30°C
Grout depth	5mm to 120mm
Tensile bond strength	15MPa approx
Slant shear bond strength	40MPa (substrate failure)
Density	1.6kg/Litre
Full cure	7 Days at 25°C
Tensile strength (flexural)	30MPa approx.
Mix ratio	4:1 part A:B vol
Tack free time	50mins at 25°C
Hardness	>80shoreD
Modulus of elasticity	14GPa
Compressive strength	119MPa (7days at 25°C)
Pot life	25-30 mins at 25°C
Chemical Resistance	Very good
Water absorption	<0.2% (10 days at 25 C)



Epoxy Resin Binder

MULTI-PURPOSE HIGH PERFORMANCE EPOXY BINDER SYSTEM

Aftek Epilox Epoxy Binder is a two-part solvent free epoxy resin binder system for combining with selected fillers and aggregate to produce epoxy mortars of various consistencies. May be used on vertical or horizontal applications as structural epoxy adhesive paste and filler. Epilox Epoxy Binder is also used as a primer for Epilox floor coatings and toppings as well as Epilox mortars.

Recommended Uses

- Suitable for use on damp substrates
- Preparing high strength mortar for repair of damaged concrete or masonry in vertical or horizontal surfaces
- Grouting starter bars, load bearing bolts and base plate supports in concrete
- Sealing of cracks in concrete
- Filling of voids in spalled concrete to restore to original condition with enhanced strength performance
- As a repair mortar where high chemical and abrasion resistance is required
- Patching large sections where high strengths are required
- May be used in flowable consistency or trowel able consistency to cater for any repair shape or size
- Can be used for external applications
- High adhesive bond strength to concrete
- Structural bonding new to old concrete
- Structural repair to spalled concrete
- As a primer for Epilox floor coatings
- Addition of Epilox Fillers to produce Epoxy mortars and grouts

Features & Benefits

- 100% solids epoxy
- Solvent free
- Low VOC
- High tensile and compressive strength
- Bonds to damp concrete
- High mechanical strength
- Excellent adhesion to most substrates
- Cures at temperature down to 5°C
- High chemical resistance
- Unfilled system
- Allows for mortars and grouts to be mixed to any desirable consistency
- Typically, 3-4 times stronger than typical concrete
- Australian Made
- Convenient mix ratio (2 parts Resin - 1 part Hardener)



RenderGrip A

CURING COMPOUND AND PRIMER

Rendergrip A is a milky white, single component acrylic emulsion. Rendergrip A is the recommended primer, bonding agent and curing compound for use with RLA & Aftek's range of concrete repair systems.

Features & Benefits

RenderGrip A allows the optimum build of RLA & Aftek's repair mortars. Including Penapatch High Build, Penapatch HB80, Penapatch HB50, Fairing Coat Mortar and Penatpatch Panel LW.

- Can be used internally and externally
- Resistant to hydrolysis
- High ultimate bond strength between repair mortar and concrete substrate



RenderGrip B

BONDING AGENT AND PRIMER

Rendergrip B is a thixotropic acrylic bonding agent and primer as part of Aftek's repair compound package.

Rendergrip B is specifically used where a high build repair mortar is required.

Features & Benefits

RenderGrip A allows the optimum build of RLA & Aftek's repair mortars. Including Penapatch High Build, Penapatch HB80, Penapatch HB50, Fairing Coat Mortar and Penatpatch Panel LW.

- Ready to Use
- Water Based
- Easy Application
- Excellent Adhesion
- Suitable for After Trades
- Available in 5lt or 20t

Zinc Rich Primer

BONDING AGENT AND PRIMER

Single pack Zinc Rich Primer giving protection based on an extremely durable epoxy resin and sacrificial zinc pigment. Primarily used for the treatment of steel reinforcements during concrete repair works.

Features & Benefits

- Steel treatment for concrete repair
- For long term protection of steel surfaces against rust and corrosion.
- Can be used in the most severe of corrosion inducing conditions.
- Designed for exterior use such as on roofs, handrails, balustrading, gates and wrought iron.
- Also used for touch-up of galvanised and zinc-alum surfaces and touch-up after welding.







UltraPlan Eco

ULTRA-FAST DRYING CEMENT BASE

Ultra-fast hardening self-levelling smoothing compound with very low VOC content. Interior levelling of new and existing substrates, as long as not subject to moisture, to make them suitable for receiving all types of flooring where high resistance to loads and traffic is required. Levelling existing floors provided they are solid, dry and clean.

Technical Data

- **Pot life:** 20-30 minutes
- **Application thickness:** from 1 to 10 mm
- **Set to light foot traffic:** approximately 3 hours
- **Waiting time before installation:** 12 hours
- **Colour:** pinkish grey
- **Application:** trowel, squeegee, or pump
- **Storage:** 12 months
- **Consumption:** 1.6 kg/m² per mm of thickness
- **Packaging:** 20 kg bags



UltraPlan

ULTRA-FAST DRYING CEMENT BASE

Self-levelling, ultra quick-hardening smoothing compound for thicknesses from 1 to 15 mm.

Technical Data

- **Where to use:** internal floors for ceramic, natural stone, resilient and wooden coatings
- **Workability time:** 20-30 minutes
- **Set to light foot traffic:** approx. 3 hours
- **Waiting time before laying:** 12 hours for ceramic tiles, natural stone, resilient and wood coverings
- **Application:** trowel, rake or pump
- **EMICODE:** EC1 R Plus - very low emission
- **Green Star™:** very low VOC content (g/l) - contributes valuable points towards Green Star™ credits
- **Storage:** 12 months
- **Consumption:** 1.6 kg/m² per mm of thickness
- **Packaging:** 20 kg bags



UltraPlan Maxi

ULTRA-FAST DRYING CEMENT BASE

Ultra-fast hardening self-levelling smoothing compound for thicknesses from 3 to 40 mm. Interior levelling of new and existing substrates to make them suitable for receiving all types of flooring where high mechanical strength is required. Levelling existing floors provided they are solid, dry and clean.

Technical Data

- **Pot life:** 30-40 minutes
- **Application thickness:** from 3 to 40mm
- **Set to light foot traffic:** approximately 3 hours
- **Waiting time before installation:** from 2 days to 2-3 weeks depending on the thickness
- **Colour:** grey.
- **Application:** trowel, squeegee, or pump
- **Storage:** 12 months
- **Consumption:** 1.7 kg/m² per mm of thickness
- **Packaging:** 20 kg bags



UltraPlan Trade

FAST DRYING CEMENT BASE

Fast-drying interior levelling and smoothing compound from 3 to 40 mm per pour on new or existing substrates. Ideal levelling compound where high resistance to loads and traffic is required. Especially suitable for areas subject to wheeled chairs. Specially formulated for use by trade professionals.

Benefits

- Can be spread in thicknesses up to 40 mm per coat without shrinkage, cracking or crazing.
- Develops very high compressive and flexural strength as well as resistance to indentation and abrasion.



UltraPlan Renovation

FIBRE-REINFORCED LEVELLING

Fibre-reinforced levelling compound for interiors for thicknesses from 3 to 40 mm in a single application. Use on internal floors for new or existing concrete, screeds, stone, terrazzo, ceramic tiles, old or new timber floors, floorboards, chipboard panels, plywood and parquetry.

Technical Data

- **Workability time:** 30-40 minutes
- **Set to light foot traffic:** approx. 4 - 6 hours
- **Waiting time before laying:** 1 - 3 days depending on thickness
- **EMICODE:** EC1 R Plus - very low emission
- **Green Star™:** very low VOC content (g/l) - contributes valuable points towards Green Star™ credits
- **Colour:** Grey
- **Storage:** 12 months
- **Consumption:** 1.8 kg/m² per mm of thickness
- **Packaging:** 20 kg bags



Novoplan 21

SELF LEVELLING COMPOUND

Fast hardening self-levelling smoothing compound for thicknesses up to 10 mm.

Where to Use

Smoothing in interiors of new and existing substrates, including heated screeds, to prepare them for the installation of PVC, rubber and carpet flooring.

Smoothing existing ceramic tile, terrazzo and natural stone flooring, as long as it is solid, dry and clean.

Novoplan 21 is applied from 1 to 10 mm per coat and is suitable for wheeled traffic.

Technical Data

- **Application thickness:** from 1 to 10mm
- **Packaging:** 20 kg bags
- **Consumption:** 1.6 kg/m² per mm of thickness



Planiprep SC

HIGH-PERFORMANCE, FIBER-REINFORCED SKIMCOATING COMPOUND

A high-performance, polymer-modified, fiber-reinforced cement-based skimcoating and patching compound. Use Planiprep SC to skimcoat and smooth minor surface variations and defects on common substrates. Planiprep SC creates a strong, durable surface ready for almost any floor application.

Technical Data

- Mixes to a smooth, easily applied consistency.
- Creamy smooth texture trowels easily to create a defect-free surface.
- Provides a suitable surface for adhesives prior to floor-coverings.
- Rapid-set: Typically ready for floor-covering installations in 30 to 60 minutes.



Eco Prim T Plus

ALL-PURPOSE PRIMER

Eco Prim T Plus is a solvent-free, easily applied acrylic resin-based primer in water dispersion. It has excellent bonding, flexibility, water and ageing resistant characteristics. Solvent-free, low odour acrylic primer in water dispersion with very low emission of volatile organic compounds (VOC).

Technical Data

- **Application temperature range:** from +5°C to +35°C
- **Drying time:**
 - concrete/wood: 15-20 mins
 - ceramic: 30-40 mins
- **Waiting time before applying the adhesive or the smoothing compound over:**
 - concrete/wood: 2-3 h
 - ceramic: 4-5 h



Eco Prim Grip

ALL-PURPOSE PRIMER

Eco Prim Grip is a multi-purpose, ready-to-use primer for internal and external floors and walls and may be used to improve the bond of all types of cement, gypsum and lime-based plasters on substrates made from concrete, brickwork, vibro-compressed concrete blocks, lightweight blocks and gypsum.

Technical Data

- **Waiting time before applying render:** 15-20 minutes
- **Waiting time before applying smoothing compound:** 30 minutes
- **Storage:** >12 months in its original packaging.
- **Packaging:** 5kg and 10kg drums.



Primer MF

ALL-PURPOSE PRIMER

Two-component, solvent-free 100% solid epoxy primer for consolidating and waterproofing cementitious substrates. Application prior to the installation of flooring sensitive to moisture and to alleviate moisture related problems of concrete or cementitious screeds. Can be applied to substrates up to 100% RH.

Technical Data

- **Consistency:** liquid.
- **Colour:** transparent yellow.
- **Mixing ratio:** comp. A : B = 3:1
- **Waiting time before laying floors or applying smoothing compound:** 24-48 hours according to the surrounding temperature
- **Workability time:** 90 minutes
- **Storage:** 24 months
- **Application:** brush
- **Consumption:** 0.20-0.30 kg/m²
- **Packaging:** 1 kg (A+B) and 6 kg (A+B) units



Mapeproof 1K Turbo

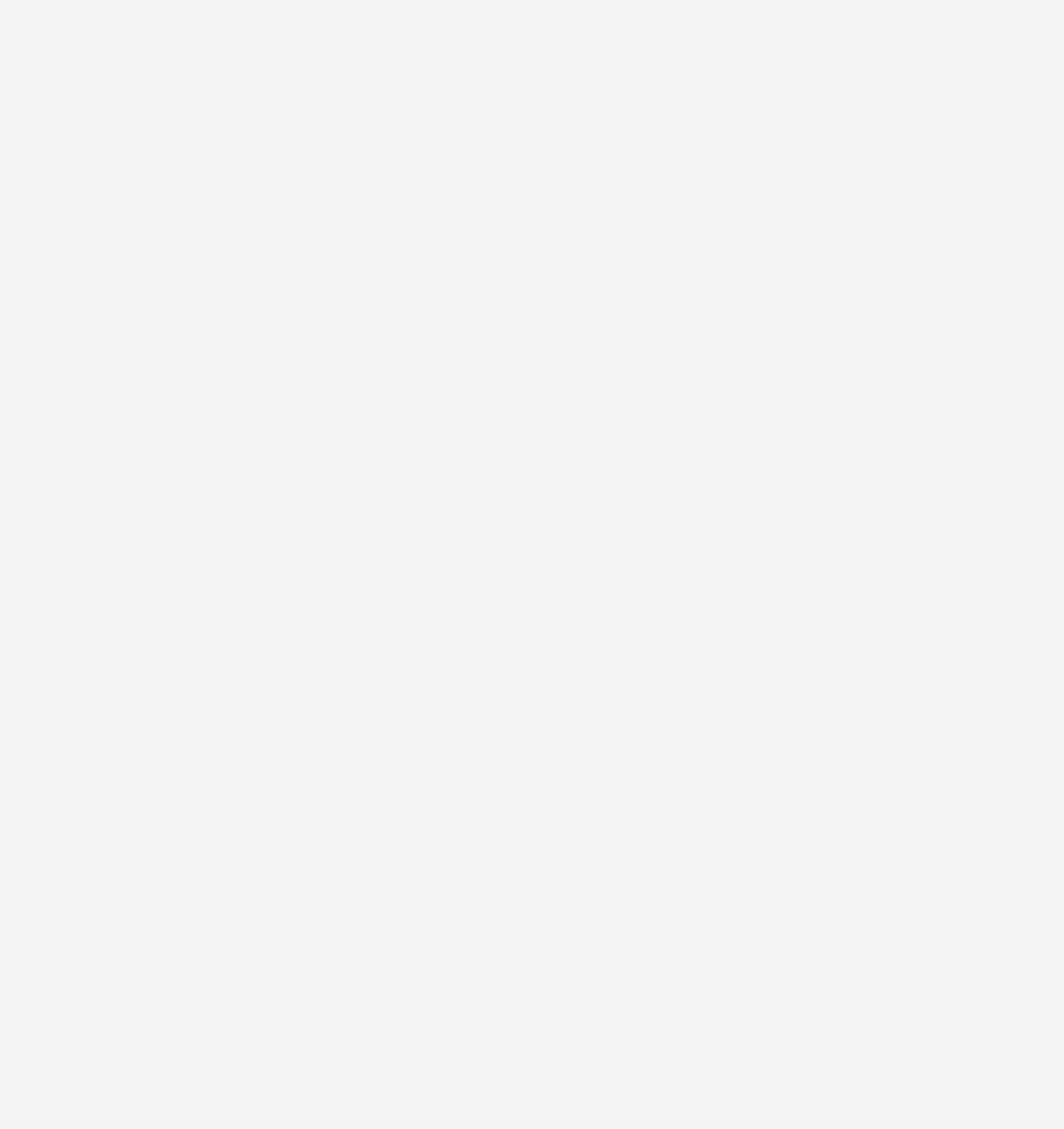
SINGLE COMPONENT, SOLVENT FREE

One component, solvent-free moisture curing and rapid drying polyurethane surface membrane with a very low emission of volatile organic compounds. Moisture vapour barrier for cement-based substrates that are not subject to rising damp but have a residual humidity content higher than the Australian Standard 75% RH up to 95% RH [ASTM P2170] as per AS1884-2012).

Technical Data

- **Consistency:** liquid
- **Waiting time between coats:** min 40 minutes, max 2 hours
- **Waiting time before laying directly with polyurethane or epoxy-polyurethane adhesive:** min 2 hours, max 24 hours
- **Waiting time before laying directly with water-based adhesive:** minimum 2 hours, maximum 24 hours
- **Waiting time before successive treatments on final coat (blended with sand):** min 2 hours
- **Loss of Tack:** after 30-40 minutes
- **Set to light foot traffic:** 60 minutes
- **Storage:** 12 months.
- **Application:** roller, brush or flat trowel
- **Consumption:** 0.20-0.40 kg/m² per coat
- **Packaging:** 10 kg drums





ALLDURO

Alduro

14 Vulcan Road,
Canning Vale WA 6155
T. 08 9455 1658
info@allduro.com
sales@allduro.com

allduro.com