

FALL & WINTER



KING INDUSTRIAL RE-TOOL YOUR METAL SHOP

Saskatoon
306.652.6858
2815B Cleveland Ave.

GREAT WESTERN SAW
Machinery, Tooling & Accessories
— Sharp Advice —

Regina
306.543.6970
1238 Lorne St. (at 7th Ave.)

PRICES IN EFFECT UNTIL DECEMBER 31ST, 2024

MILLING DRILLING MACHINE with SAFETY GUARD & LIMIT SWITCH

PDM-30

- 16 1/2" swing
- 1 1/4" Drilling capacity
- 3" Face mill capacity
- 5" stroke
- Spindle taper R8
- 12 speeds (150-2500 RPM)

OPTIONAL

TABLE POWERFEED ATTACHMENT PFM-32
For # PDM-30
\$679.

5 PC. ACCESSORY BONUS PACKAGE FREE

INCLUDED WITH THE PURCHASE OF A PDM-30 MILLING DRILLING MACHINE
Includes: angle drill press vise, drill chuck with key, drill chuck arbor, carbide-tipped face mill and face mill arbor.

OPTIONAL

MILLING DRILLING MACHINE STAND SS-45 **\$399.99**



\$2999.

STATIONARY 6.5 PEAK HP 60 GALLON AIR COMPRESSOR

KC-6160V2

- 150 PSI max pressure
- 13.4 CFM @ 40 PSI
- 11.2 CFM @ 90 PSI

\$1099.

2 cylinder cast iron single stage oil lubricated pump



Thermally protected Marathon® 6.5 peak HP motor with reset

7" X 12" METAL CUTTING BANDSAW

KC-712BC

- 11.5 Amp. motor
- Coolant system
- Adjustable ball bearing guides
- 4 speeds (85-130-180-235 FPM)

PATENTED TRU-LOCK quick locking vise system

\$1999.



The Most Innovative Drill Presses

DVR WITH ADAPTIVE CONTROL™ SOFTWARE

Safety Guard with Limit Switch



83750
Fits #83705

\$399.

16" NOVA VIKING DVR DRILL PRESS

83705

- Powerful direct drive 1 HP high torque motor with no pulleys or belts
- Spindle taper MT #2
- Comes with 5/8" drill chuck & key, firmware USB cable

\$1699.

Safety Guard with Limit Switch



58501
Fits #58006

\$399.

18" NOVA VOYAGER DVR DRILL PRESS

58006

- Powerful direct drive 1.75 HP high torque motor with no pulleys or belts
- Spindle taper MT #2
- Comes with 5/8" drill chuck & key, firmware USB cable

\$2399.

17" DRILL PRESS

DRILL PRESS CHUCK SAFETY GUARD KM-118 Fits KC-118FC



\$29.99

KC-118FC

- 12.5 Amp. motor
- 16 speeds (240-3400 RPM)
- 17" swing
- 3 1/4" stroke
- 5/8" chuck

\$799.

17" DRILL PRESS with SAFETY GUARD & LIMIT SWITCH



KC-118FC-LS

- 12.5 Amp. motor
- 16 speeds (240-3400 RPM)
- 17" swing
- 3 1/4" stroke
- 5/8" chuck

\$899.

3200 PSI GASOLINE HIGH PRESSURE WASHER

KPW-3200

- 3200 PSI, 2.5 GPM maximum water flow
- Low oil shut-off system
- Comes with stainless steel wand, 30' high pressure hose, garden hose inlet with screen filter, 12" wheels for portability and 5 quick connect nozzles (0°, 15°, 25°, 40° and detergent)

Powerful 7 HP, 4 stroke air cooled OHV engine

\$379.99



NEW

16" X 20" COMBO LATHE/MILL - KC-1620CLM

- Comes with 5" - 3 jaw chuck, imperial & metric change gears, quick change tool post with 1/2" capacity, steady rest, follow rest, thread chasing dial indicator, MT#3 & MT#4 dead centres, 1/2" drill chuck and tool box with adjusting tools

Two powerful 3/4 HP 110V motors

\$3499.



OPTIONAL

STAND SS-1620CLM

(41-3/8" x 19-1/4" x 30-1/2") **\$399.**

OPTIONAL

KM-124

Elevating block with 7/16" T-slots (7-7/8" x 5-7/8" x 5") **\$199.**



11 PC. METAL LATHE CUTTER SET

KM-146

3/8" Shank Fits: KC-0712ML, KC-1022ML, KC-1620CLM **\$59.99**



10000W TRI-FUEL GENERATOR WITH ELECTRIC START

KCG-10002GE-TF

- Powerful 15 HP, 4 stroke air cooled OHV engine
- AVR system and electronic ignition
- Low oil shut-off with indicator light protects the engine
- Two duplex outlets: 120V/20 Amp. AC
- Two twist lock outlets: 120V/30 Amp. and 120V/240V/30 Amp. AC

NEW

POWER/FORCE BEST/FUEL



Comes with propane tank and natural gas connection cables.

\$1099.99

11000W TRI-FUEL DIGITAL INVERTER GENERATOR

KCG-11000i-TF

- Powerful 18 HP, 4 stroke air cooled motor
- DC dual USB ports: 5V/3.1 Amp. DC output for charging smartphones, tablets or any USB powered equipment
- AC duplex outlet: 120V/20 Amp. AC output
- AC twist lock outlet: 120V/240V 30 Amp. AC output
- AC outlet: 120V/240V 50 Amp. AC output

NEW



Comes with propane tank and natural gas connection cables.

\$2199.99

H.S.S. & BI-METAL BLADES ("SKIP TOOTH")							
Model	Length	Width	Blade Material	TPI	Thickness	Price	
KBB-712-10	93"	3/4"	H.S.S.	10	.032"	\$27.99	
KBB-712-14	93"	3/4"	H.S.S.	14	.032"	\$27.99	
KBB-712-18	93"	3/4"	H.S.S.	18	.032"	\$27.99	
KBB-712-BM-610	93"	3/4"	Bi-Metal	6-10	.032"	\$79.99	
KBB-712-BM-1014	93"	3/4"	Bi-Metal	10-14	.032"	\$79.99	

FAGOR DIGITAL READOUT SYSTEMS



20i-T-840
(Fits KC-1440ML-6
& KC-1440ML-2)

2 AXIS with
8" x 40" scales

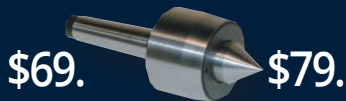
\$2499.

20i-T-1040
(Fits KC-1640ML)

2 AXIS with
10" x 40" scales

\$2699.

LIVE CENTERS



\$69.
KLC-2M
TAPER SHANK -
MT#2

\$79.
KLC-3M
TAPER SHANK
MT#3

7 PC. CARBIDE CUTTER HOLDERS

- 2 positions carbide indexable Cutter Inserts (5pc.)
- H.S.S. inserts (2pc.)

INCLUDED
Screwdriver and
3 adjustment keys



KM-047
3/8" Shank

KM-057
5/8" Shank

\$199.

\$219.

Fits Models: KC-0712ML, KC-1022ML
Fits Models: KC-1236ML, 14440ML-2, 14440ML-6, KC-1640GH, KC-1640ML & KC-1660GH

TAPER ATTACHMENT



Taper Attachment must be ordered together with

These Taper Attachments are designed to fit our 12" x 36", 14" x 40" & 16" x 40" Metal Lathes models
KC-1236ML, KC-1440ML-2 & KC-1640ML

7 PC. QUICK CHANGE TOOL POST KITS



KOCT-0012
Fits most lathes up to 0 to 12" swing

\$279.99

KOCT-1015
Fits most lathes between 10" to 15" swing

\$349.99

KOCT-1318
Fits most lathes between 13" to 18" swing

\$499.99

2

METAL LATHES & ACCESSORIES



7" X 12"

VARIABLE SPEED MINI METAL LATHE

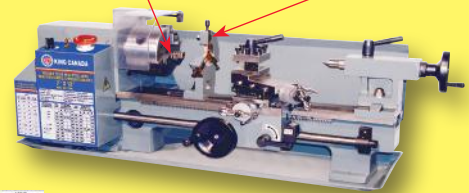
KC-0712ML

- 3/4" spindle bore
- Variable speeds 2 (0-1100, 0-2500 RPM)
- Comes complete with quick change gear box, face plate, replacement gears, 4-way tool post, MT#2 dead center, threading dial indicator

\$1150.

5.5 Amp.
(110V)

INCLUDES - 4" - 3 JAW CHUCK & STEADY REST



10" X 22"

BELT DRIVE METAL LATHE

KC-1022ML

- 1" spindle bore
- Spindle speeds 6 (150-2400) RPM
- Comes complete with 5"-3 jaw chuck, 6-1/2"-4 jaw chuck, replacement gears, 4 way tool post, steady rest, follow rest, 8" face plate, thread chasing dial indicator, MT#3 dead center, full length splash guard, tool box, and chuck key

\$3199.

12 Amp.
(110V)

**OPTIONAL
CABINET
STAND
SS-1022**



\$379.99



12" X 36"

GEARHEAD METAL LATHE

KC-1236ML/SS-1236

- 1 1/2" spindle bore
- Spindle speeds 9 (60-1500) RPM
- 40(4-112 T.P.I.) 30(2 - 4.5mm) thread cutting
- Comes complete with 6"-3 jaw chuck, 8"-4 jaw chuck, imperial and metric gears, quick change tool post, steady rest, follow rest, 10" DI-4 camlock face plate, thread chasing dial indicator, MT#3 dead center, MT#3 arbor taper, 1/2" drill chuck, full length splash guard, tool box, and chuck keys

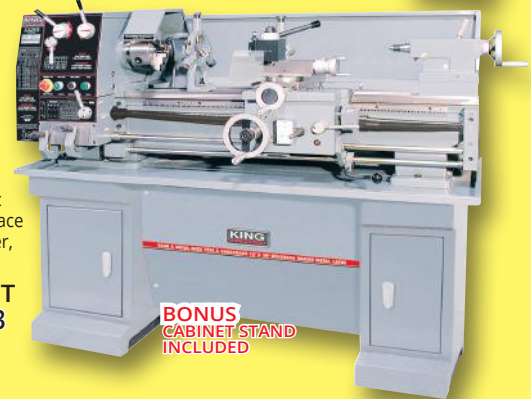
KC-1236ML/SS-1236

\$5999.

**WITH TAPER ATTACHMENT
KC-1236ML/SS-1236/KM-053**

\$6499.

1.5 HP
(220V)



**BONUS
CABINET STAND
INCLUDED**

14" X 40"

GEARHEAD METAL LATHE

- Spindle speeds 8(70-2000 RPM)
- 34(4-56 T.P.I.) 26(4 - 7mm) thread cutting
- Comes complete with 7"-3 jaw chuck, 8"-4 jaw chuck, replacement gears, quick change tool post, steady rest, follow rest, 12" DI-5 camlock face plate, coolant system, full length splash guard, thread chasing dial indicator, 2 MT#3 dead centers, MT#6-MT#3 sleeve, tool box, chuck keys, and cabinet stand with foot brake

KC-1440ML-2

\$9499.

**WITH TAPER ATTACHMENT
KC-1440ML-2/KM-054**

\$9999.

2 HP
(240V)



**CABINET STAND WITH
FOOT BRAKE INCLUDED**

16" X 40"

**HIGH PRECISION
"TOOL ROOM" METAL LATHE**

- Spindle speeds 16(45-1800 RPM)
- 2" spindle bore diameter
- 45(2-72 T.P.I.) thread cutting
- Comes complete with 8"-3 jaw chuck with inside & outside jaws, 12"-4 jaw chuck, quick change tool post and two 3/4" tool holders, steady and follow rests with roller guides, 14" (D1-6) camlock face plate, MT #4 standard dead centre, MT #4 carbide tipped dead centre, MT #4 to MT #6 spindle sleeve adapter, coolant system, manual micrometer carriage stop, tool box and wrenches

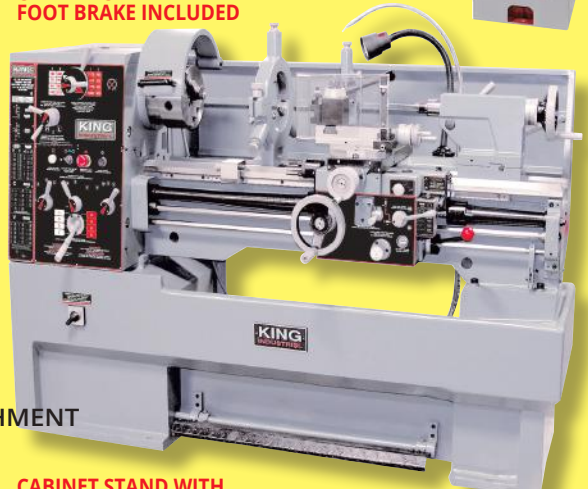
KC-1640ML

\$16999.

**WITH TAPER ATTACHMENT
KC-1640ML/KM-055**

\$17499.

4 HP
(600V)



**CABINET STAND WITH
FOOT BRAKE INCLUDED**

12" SLOW SPEED COLD CUT SAW

KC-315CS

- 4.5 HP motor
- Low 52 RPM blade speed is ideal for cutting ferrous metals
- Mitering head pivots to the right or left with positive stops at 45° and 90°

Blade not included



\$3399.

OPTIONAL

12" COLD CUT SAW BLADE

KM-1200
(Made in Italy)

\$379.



MILLING DRILLING MACHINES

MINI MILLING DRILLING MACHINE

KC-15VS

- Variable speed gear drive
- Spindle depth fine feed control with micro downfeed dial
- Adjustable depth stop
- Chuck guard
- Emergency stop button
- Comes with 1/2" chuck, chuck key, R8 chuck arbor, safety guard, 2 T-bolts, oil bottle, adjustment wrenches and hex. keys

POWERFUL
3/4 HP
MOTOR



Column tilts 45° to the right or left

\$999.

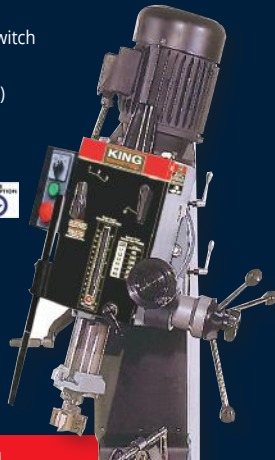


GEARHEAD MILLING DRILLING MACHINE WITH SAFETY GUARD & LIMIT SWITCH

KC-45

- 1.5 HP Motor
- Forward & Reversing Switch
- 20 7/16" Swing
- 5" Stroke
- 6 speeds (60-1500 RPM)
- 9 1/2" X 32 1/4" Table
- 1 1/4" Drill capacity
- 4" Face mill capacity
- Spindle taper R8

\$5999.



OPTIONAL

TABLE POWERFEED ATTACHMENT

PFM-32
For # KC-45

\$679.

OPTIONAL

MILLING DRILLING MACHINE STAND

SS-45

\$399.99

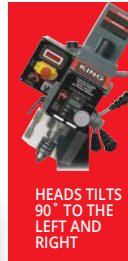


MILLING DRILLING MACHINE WITH DIGITAL READOUT, SAFETY GUARD & LIMIT SWITCH

KC-20VS-2

- 1 HP Motor
- 13" Max. distance spindle nose to table
- 13" swing
- R8 Spindle taper
- 2" Spindle stroke
- Speeds 2(50-1125 / 100-2250 RPM)
- 7 1/16" x 27 1/2" Table dimensions
- 1/2" Size of T-Slot on table
- Comes with 1/2" chuck, chuck key, R8 chuck arbor, safety guard, 2 T-bolts, oil bottle, adjustment wrenches, hex. keys and tool box

\$2399.



HEADS TILTS 90° TO THE LEFT AND RIGHT



OPTIONAL

MILLING DRILLING MACHINE STAND

SS-20VS

\$329.

INSPECTION CAMERAS

INSPECTION CAMERA WITH LCD MONITOR

\$99.99

KC-9050

Kit includes:

- Camera handle, 9mm dia. x 39" flexible camera probe
- 2.4" diagonal TFT-LCD color monitor,
- Kit comes with 3 accessory tools (45° mirror, magnetic pick-up, pick-up hook) and 4 AA batteries



WIRELESS INSPECTION CAMERA WITH RECORDABLE LCD MONITOR

KC-9200

Kit includes:

- Camera handle, 39" x 9mm camera probe, 39" x 10mm camera probe extension, 3.5" TFT-LCD wireless color monitor, monitor Li-ion charger, 3 accessory tools (45° mirror, magnetic pick-up, pick-up hook), USB and Video cables, 4GB SD memory card and 4 AA batteries



DIGITAL ZOOM 3X

\$199.99

18 PC. COLLET SETS

Includes straight shank, 15 collets, wrench and plastic case.

KCS-4015

- Straight shank taper ISO 40
- Draw Bar 5/8" WII

KCS-R8-15

- Straight shank taper R8
- Draw Bar 7/16" NF 20



\$399.99 ea.

DIVIDING PLATES FOR ROTARY TABLE

KC-DPRT-6

Size 6"

KC-DPRT-8

Size 8"



\$159.99 ea.

K-TYPE SWIVEL BASE MILLING VISES

3"

4"

6"

8"

KMV-3M

KMV-4M

KMV-6M

KMV-8M

\$129.

\$199.

\$259.

\$369.



HORIZONTAL & VERTICAL ROTARY TABLES

KC-HVRT-6

Size 6"

KC-HVRT-8

Size 8"



\$499.

\$599.

3

METAL CUTTING BANDSAWS

PORTABLE VARIABLE SPEED METAL CUTTING BANDSAW

KC-8377

- Variable speed 0-420 SFPM
- Cutting capacity of 5" x 5"
- Blade tension lever
- Comes with standard 44-7/8" x 1/2" blade

\$199.99



OPTIONAL
Miter Stand
turns this
Bandsaw into
a Cut-off Saw



SS-8377

\$99.99

BI-METAL BLADES					
Model	Length	Width	TPI	Thickness	Price
KBB-8376-BM-1014	44 7/8"	1/2"	10-14	.020"	\$24.99
KBB-8376-BM-1418	44 7/8"	1/2"	14-18	.020"	\$24.99

5" x 6" METAL CUTTING BANDSAW

KC-129C

- 3 speeds (80-120-200 FPM)
- Comes with wheels for portability

**8 Amp.
(110V)**



\$699.

H.S.S. & BI-METAL BLADES						
Model	Length	Width	Blade Material	TPI	Thickness	Price
KBB-115-10	64 1/2"	1/2"	H.S.S.	10	.025"	\$19.99
KBB-115-14	64 1/2"	1/2"	H.S.S.	14	.025"	\$19.99
KBB-115-18	64 1/2"	1/2"	H.S.S.	18	.025"	\$19.99
KBB-115-24	64 1/2"	1/2"	H.S.S.	24	.025"	\$19.99
KBB-115-BM-10	64 1/2"	1/2"	Bi-Metal	10	.025"	\$39.99
KBB-115-BM-14	64 1/2"	1/2"	Bi-Metal	14	.025"	\$39.99
KBB-115-BM-18	64 1/2"	1/2"	Bi-Metal	18	.025"	\$39.99

5" x 6" DUAL SWIVEL METAL CUTTING BANDSAW

KC-129DS

- Head swivels 0° - 45° to the right and 0° - 60° to the left
- Adjustable hydraulic downfeed control
- Automatic shut-off switch

ADJUSTABLE
HYDRAULIC
CYLINDER



**8 Amp.
(110V)**

\$999.

10" x 18" METAL CUTTING BANDSAW

KC-227-2 (220V)

KC-227-6 (600V)

- 4 speeds (114, 196, 288, 377 FPM)
- Carbide ball bearing blade guide
- Control panel with automatic shut-off
- Adjustable hydraulic downfeed control
- Both adjustable control arms can be positioned as close to the cut as possible
- Coolant system with regulator valves

PRECISION
PRESSURE
GAUGE
INDICATES
THE BLADE
TENSION



H.S.S. BLADES					
Model	Length	Width	TPI	Thickness	Price
KBB-225-10	122"	1"	10	.032"	\$39.99
KBB-225-14	122"	1"	14	.032"	\$39.99

**11.5 Amp. @ 220V
2.6 Amp. @ 600V**



PATENTED
TRU-LOCK™ quick
locking vise system.

Exclusive
24 Volt
control
panel

Exclusive
24 Volt
control
panel

\$5899.

10" x 18" VARIABLE SPEED SWIVEL METAL CUTTING BANDSAW

KC-228S-V-2 (220V)

KC-228S-V-6 (600V)

**11.5 Amp. @ 220V
2.6 Amp. @ 600V**

- Swivel base from 0° to 45°
- Position adjustable control panel and automatic shut-off
- Adjustable hydraulic down feed control
- Carbide ball bearing blade guides
- Coolant system with regulator valves

BI-METAL BLADES

Model	Length	Width	TPI	Thickness	Price
KBB-225-BM-610	122"	1"	6-10	.032"	\$99.99
KBB-225-BM-812	122"	1"	8-12	.032"	\$99.99



\$7999.

METAL CUTTING BANDSAWS

nova™

7" x 12" DUAL SWIVEL METAL CUTTING BANDSAW

KC-712DS

6 Amp.
(220V)

- Returning coolant system
- 4 speeds (98-164-246-328 FPM)
- Automatic shut-off
- Adjustable ball bearing guides

PATENTED TRU-LOCK™ quick locking vise system.



\$3599.

7" x 12" NOVA DVR METAL CUTTING BANDSAW

59001

- Smart metal bandsaw features state of the art technology
- Digital Variable Reluctance (DVR) Direct Drive 1 HP motor with Adaptive Control™ Software
- Constant torque under load and electronic braking emergency stop
- Includes a 240V conversion components kit

DVR Smart
THE WORLD FIRST SMART BANDSAW WITH DIGITAL DISPLAY



\$3499.

9" x 18" METAL CUTTING SWIVEL BANDSAW

KC-918S-V (8 Amp. 220V)

KC-918S-V- 600V (2.5 Amp. 600V)

- Returning coolant system
- Variable speeds (80-250 FPM)
- Carbide ball bearing blade guides with rollers
- Centralized control panel and automatic shut-off
- Adjustable hydraulic downfeed control
- Precision blade tension adjustment
- Head swivels 0° to 45° in one direction
- Quick-positioning vise with fully adjustable jaws for 0° to 45° angles

VARIABLE SPEED



\$8499.

17" VARIABLE SPEED METAL/WOOD CUTTING BANDSAW

KC-1700WM-VS

- Variable speeds (wood): 540-3600 SFPM
- Variable speeds (metal): 100-650 SFPM
- Voltage (input power): 220V, 1 phase, 60 Hz
- Comes with a 1/2" x 6 TPI wood cutting blade, 1/2" x 10 TPI metal cutting blade, laser guide, work lamp, miter gauge and a precision "TRU-RIP" aluminum rip fence with resaw guide



2HP
(8 Amp. @ 220V)

\$4499.

18" METAL CUTTING BANDSAW

KC-450

- Variable speed
- Handwheel controls speed
- Speed changes while the machine is in operation
- Comes complete with 4-way tilting table, and work light



7.5 Amp.
(220V)

\$5499.

H.S.S. & BI-METAL BLADES ("SKIP TOOTH")						
Model	Length	Width	Blade Material	TPI	Thickness	Price
KBB-918-10	131 3/4"	1"	H.S.S.	10	.032"	\$39.99
KBB-918-14	131 3/4"	1"	H.S.S.	14	.032"	\$39.99
KBB-918-BM-610	131 3/4"	1"	Bi-Metal	6-10	.032"	\$99.99
KBB-918-BM-812	131 3/4"	1"	Bi-Metal	8-12	.032"	\$99.99

3" X 79" METAL BELT SANDER

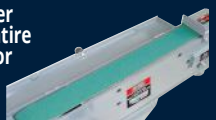
Comes with Canadian made 80 Grit pure zirconia sanding belt



KC-379MS

- Sanding belt rotates on 7-1/2" vented drive wheel and solid rubber rear wheel for maximum tracking and sanding control
- Head pivots up or down on base for easy and safe work heights
- Horizontal working height of 36"

Hinged top cover for access to entire length of belt for larger pieces



2 HP (220V)

\$1099.



BENCH GRINDER STAND

SS-150N

- Made of cast-iron & alloy steel
- Height of 31-1/2" from the floor
- Water reservoir for quenching workpieces



\$79.99

BENCH GRINDERS

KC-690LN

• 3450 RPM

Built-in LED lights

\$75.

NEW



6"

KC-890

• 7 Amp. motor • 3450 RPM

\$139.



8"

8" LOW SPEED BENCH GRINDER WITH LIGHT

Comes complete with diamond wheel dressing tool, tool rests, eye shields, coarse 60 grit and fine 120 Grit 8" x 1" white aluminum oxide grinding wheels

\$159.99



8"



2 HP METAL DUST COLLECTOR

KC-7300C

- Powerful 2 HP, 220V motor
- 2 Step activation safety switch with line voltage interruption
- Ideal for collection of metal chips and abrasive dust produced by metal sanders, grinders, cold cut saws, deburring and chamfering machines
- Large metal chips collection drawer
- 6" inlet with Y-inlet adaptor with two 3" dust inlets allowing up to connect up to two metalworking machines
- Comes with large paper filter and iron activated carbon filter

\$1699.

DIGITAL FRACTIONAL CALIPER

KM-106

- Converts to inches (decimal and fractional) and metric readings
- Waterproof to IP54 standards
- Two 3V Lithium batteries included



\$35.



1.5 HP (220V) Direct Drive Motor

\$1699.

12" HEAVY-DUTY BENCH GRINDER WITH FLOOR STAND

- Cast-iron wheel guards and dust vents with 2-1/2" T-fitting adaptor for dust collection
- Built-in cast-iron quench tray, 36 Grit and 60 Grit 12" x 2" grinding wheels

FIREPROOF 3" METAL DUST COLLECTION HOSES KIT

KM-102

Kits Includes: 2 - 8ft. (2.5M) Fireproof hoses 4 - hose clamps (3")



\$79.99 RATED 130°C



MAGNETIC SWITCHES

Comes with twist lock emergency stop button

\$129.99 ea.

KMAG-110-811	110V (8-11 Amp.)
KMAG-110-1114	110V (11-14 Amp.)
KMAG-110-1417	110V (14-17 Amp.)
KMAG-220-811	220V (8-11 Amp.)
KMAG-220-1114	220V (11-14 Amp.)
KMAG-220-1417	220V (14-17 Amp.)
KMAG-220-1721	220V (17-21 Amp.)

10" WET/DRY SHARPENER KIT

KC-4900S

- 1.6 Amp. motor quietly rotates at 115 RPM for maximum precision during sharpening
- Comes with angle guide honing compound and a square edge jig for sharpening a variety of blades and wood chisels



\$229.99

OPTIONAL

4 pc. Accessory Kit

KM-130

(Short knife jig, long knife jig, scissors jig & axe jig)



\$69.99

8" LOW SPEED LONG SHAFT BUFFER

KC-899LSB

- Powerful 1/2 HP motor
- Arbor shaft diameter: 5/8"
- Motor no load speed: 1,750 RPM
- Comes with two 8" x 1/2" spiral sewn cloth buffing wheels



\$159.99

2PC. 8" X 1/2" BUFFING WHEEL KIT

KM-131

\$39.99

2" X 42" BELT & 8" DISC SANDER

KC-770FX

- Both a 1" and a 2" sanding belt can be installed
- Comes with 1" x 42" sanding belt, 2" x 42" sanding belt, 1" & 2" belt platens, 2 x 8" adhesive sanding discs, miter gauge and adjustment hex. keys

NEW & IMPROVED WITH SAFETY GUARDS



\$499.

2" X 42" PURE ZIRCONIA SANDING BELTS

Model	Belt Size	Grit	Unit	Price
SB-242-60Z	2"x42"	60	1	\$9.99
SB-242-80Z	2"x42"	80	1	\$9.99
SB-242-100Z	2"x42"	100	1	\$9.99
SB-242-120Z	2"x42"	120	1	\$9.99

PURE ZIRCONIA 8" SANDING DISCS

Model	Disc Size	Grit	Unit	Price
SB-8-60Z	8"	60	1	\$9.99
SB-8-80Z	8"	80	1	\$9.99
SB-8-100Z	8"	100	1	\$9.99
SB-8-120Z	8"	120	1	\$9.99

METAL FORMING MACHINES



3 IN 1 METAL FORMING MACHINES

52" FOOT SHEAR

- KC-F5216**
- Cutting length 52"
 - Capacity 16 Gauge
 - Weight 1080 lbs

\$2699.



SLIP ROLLS

- KC-S5016**
- Max. length 50"
 - Capacity 16 Gauge
 - Weight 540 lbs

\$1899.



- KC-S3622**
- Max. length 36"
 - Capacity 22 Gauge
 - Weight 176 lbs

\$779.

- KC-S2422**
- Max. length 24"
 - Capacity 22 Gauge
 - Weight 81 lbs

\$679.

12" HAND SHEAR

- KC-HS12**
- Level arm with compensating spring

\$249.



4 TON HAND NOTCHER

- KC-N616**
- 16 Gauge notching capacity (mild steel)
 - 18 Gauge piercing capacity (mild steel)
 - Maximum notch (6" X 6" x 90°)
 - Weight 165 lbs

\$749.



ARBOR PRESS

- KAP-3**
- Capacity: 3 Ton
 - Diameter of work: 12 1/2"
 - Capacity over table: 12"

\$379.



COMBINATION, ROTARY MACHINE

- KC-RM22**
- Cutting capacity (mild steel): 22 Gauge
 - Distance between shaft centers: 2"
 - Depth of throat to frame: 7"
 - Includes 6 dies for hooking (2), burring, wiring, ogee beads and crimping

\$749.



FLOOR MODEL BOX AND PAN BRAKE

- KC-BP4812**
- Bending length 48"
 - Capacity 12 Gauge
 - Weight 1140 lbs

\$3999.



SHEAR, BRAKE AND ROLL

- KC-1220**
- Max. length 12"
 - Maximum thickness 20 Gauge
 - Weight 95 lbs

\$659.

- KC-3020**
- Max. length 30"
 - Maximum thickness 20 Gauge
 - Weight 300 lbs

\$999.

- KC-4020**
- Max. length 40"
 - Maximum thickness 20 Gauge
 - Weight 387 lbs

\$1599.

16 GAUGE BOX AND PAN BRAKE

- KC-BP4816**
- Bending length 48 1/2"
 - Capacity 16 Gauge
 - Weight 380 lbs

\$1199. NEW HEAVIER DUTY MODEL



LED WORK LIGHTS



KC-4002LED-ST
72W work light emits 8000 lumens
• Quick release latch
• For indoor and outdoor use in dry locations

\$199.99

\$149.99

KC-3002LED-ST
40W work light emits 6000 lumens
• Quick release latch
• For indoor and outdoor use in dry locations

10W Work light emits 1500 lumens
KC-1502LED-C
CORDLESS



\$49.99

KC-1501LED
15W Work light emits 1500 lumens
\$35.99

KC-3001LED
20W work light emits 3000 lumens
\$59.99

KC-4001LED
36W work light emits 4000 lumens
\$99.99

RECIRCULATING PARTS WASHERS

CLEANING BRUSH FOR PARTS WASHERS

KM-059



\$19.99



5 GALLON

KPW-205

- Safety lever has fusible link
- Durable pump included

\$89.99

20 GALLON

KPW-220

- Safety lever has fusible link
- Durable pump included

\$199.99

40 GALLON

KPW-240

- Safety lever has fusible link
- Durable pump included

\$299.99



2 TON FOLDING SHOP CRANE
KFC-2TC

- 8 ton hydraulic ram features top-of-stroke and safety overload bypass system for maximum pump protection
- Compact design with retractable boom and foldable legs
- Fold-up legs with safety pins extend to 65"

\$379.

14" CUT-OFF SAW

8342LN

- Quick release vise for holding workpiece, allows cuts up to a 45° angle

Powerful 15 Amp motor
\$169.99



VARIABLE SPEED HAND-HELD BLOWER/VACUUM
8317

- 116 CFM, max air speed 195 km/h (121 mph)
- Variable speed (6,000-14,000 RPM)
- Trigger lock-on button for continuous operation
- Comes complete with soft flexible rubber blower nozzle and a vacuum dust bag.

\$29.99



Vacuum mode

PRESSURE ABRASIVE SANDBLASTERS

- Safety pressure relief valve
- Loading abrasive is made simple using the concave funnel top of the tank
- Safety pressure relief valve
- 1/2" (I.D.) x 8 ft abrasive hose
- Includes media gun, 4 interchangeable nozzles (2, 2.5, 3 & 3.5mm), water separator filter, protective blast hood and teflon tape

KSB-10 10 GALLON
KSB-20 20 GALLON



Protective blast hood included

\$249.99

\$299.99

HYDRAULIC SHOP PRESSES WITH GRID GUARD

- Great for straightening, pressing, bending or stamping
- Used to install or remove gears, bushings or bearings
- Adjustable bed height with support rods
- Comes with 2 pressure plates

20 TON

Optional 9 PC. PUNCH & DIE KIT
KM-045
\$129.99

10 TON



KHP-10T-GGN
\$349.99

KHP-20T-GGN
\$559.99

SANDBLAST CABINETS WITH LED LIGHT

LED light for improved visibility

- 4 different sized ceramic nozzles
- 2 rubber gauntlet gloves
- Dual large access doors allow user to sandblast longer pieces of metal (KSB-350-LED only)
- Comes with 5 replacement adhesive window protectors



KSB-110N-LED
\$199.99

KSB-350-LED
\$699.

ADHESIVE WINDOW PROTECTORS
KM-097
Fits: KSB-110N-LED
5 PC. KIT

\$29.

KM-098
Fits: KSB-350-LED
5 PC. KIT

\$29.

REPLACEMENT CERAMIC NOZZLES
KM-036
Fits: KSB-110N-LED & KSB-350-LED
4 PC. KIT

\$29.



5.5 PEAK HP 20 GALLON AIR COMPRESSOR

KC-2051H2

- 150 PSI max pressure
- 7.6 CFM @ 40 PSI
- 6.0 CFM @ 90 PSI

2 cylinder cast iron
single stage oil
lubricated pump



\$749.

ASME
safety
valve

AIR TOOL KIT

8171

Comes with 1/2" Impact Wrench, 3/8" Ratchet Wrench, Air Hammer and 1/4" Die Grinder

71 PC.

\$149.99



HIGH OUTPUT 6.5 PEAK HP 60 GALLON AIR COMPRESSOR

KC-5160V2

- 150 PSI max pressure
- 22.6 CFM @ 40 PSI
- 18.5 CFM @ 100 PSI

3 cylinder cast iron
single stage oil
lubricated pump



\$1499.

ASME
safety
valve

5.5 PEAK HP 24 GALLON AIR COMPRESSOR

KC-3124V2

- 150 PSI max pressure
- 7.6 CFM @ 40 PSI
- 6.0 CFM @ 90 PSI

2 cylinder cast iron
single stage oil
lubricated pump



\$875.

ASME
safety
valve

AIR COMPRESSORS & ACCESSORIES



SPRAY GUN KITS

8180



\$37.99

8182



\$49.99

8185



\$69.99

8190 HVLP



\$79.99

8195



\$99.99

INDUSTRIAL 2-STAGE AIR COMPRESSORS

2-STAGE 5 RUNNING HP 80 GALLON AIR COMPRESSOR

KC-5280V3-MS

- 200 PSI max pressure
- 19 CFM @ 175 PSI

2 cylinder cast iron
2-stage oil
lubricated pump



\$3499.



Comes with magnetic starter

ASME safety valve

2-STAGE 7.5 RUNNING HP 80 GALLON AIR COMPRESSOR

KC-7280V3-MS

- 200 PSI max pressure
- 24 CFM @ 175 PSI

2 cylinder cast iron
2-stage oil
lubricated pump



\$3999.



Comes with magnetic starter

ASME safety valve

PREMIUM HYBRID POLYMER GARDEN HOSES

Extreme All-Weather Flexibility

Kink resistant

- K-5058GH 5/8" x 50 ft.
- K-10058GH 5/8" x 100 ft.

\$45. **\$77.** 150 PSI (Working) / 450 PSI (Burst)



300 PSI MAXIMUM PRESSURE

HYBRID POLYMER INDUSTRIAL AIR HOSES

K-2514H	25x1/4"	\$21.99
K-2538H	25x3/8"	\$29.99
K-5014H	50x1/4"	\$33.99
K-5038H	50x3/8"	\$44.99
K-10014H	100x1/4"	\$54.99
K-10038H	100x3/8"	\$65.99

RETRACTABLE AIR HOSE 50 FT. x 3/8" REEL WITH HYBRID POLYMER AIR HOSE

- All-Weather Flexibility (-40°C to 65°C)
- Comes with wall mounting hardware



\$109.99

MANUAL AIR HOSE 100 FT. x 1/4" REEL WITH HYBRID POLYMER AIR HOSE

- 360° swivel base
- All-Weather Flexibility (-40°C to 65°C)



\$109.99

HEPA CARTRIDGE FILTERS

HEPA (high-efficiency particulate air) filters are designed to capture all particles that are 0.3 microns or smaller

KVAC-1145

Fits: 8520LP, 8530LPN, 8531LP-B, 8540LSTN

KVAC-1150

Fits: 8560LST



\$39. EA.

8520LP

- Powerful 3.5 Peak HP motor
- 5 US Gallon (20L)
- Comes complete with 6 ft. x 1-1/4" thread-on hose, 3 pc. plastic extension wand, 20L dust bag, foam filter, reusable filter, 10" floor sweep and crevice tool

\$69.99

WET-DRY VACUUMS

8530LPN

- Powerful 4 Peak HP motor
- 8 US Gallon (30L)
- Comes complete with 6 ft. x 1-1/4" hose, 2 pc. plastic extension wand, 30L dust bag, cartridge filter, foam filter, reusable filter, 10" floor sweep and crevice tool

Tank water drain

\$89.99

8540LSTN

- Powerful 4 Peak HP motor
- 10 US Gallon (40L)
- Comes complete with 6 ft. x 1-1/4" hose, 2 pc. extension wand, 40L dust bag, cartridge filter, foam filter, reusable filter, 10" floor sweep and crevice tool



\$179.99

Double filtration system

8560LST

- Powerful 6.5 Peak HP motor
- 16 US Gallon (60L)
- Convenient 18 ft. power cord
- Comes complete with 8 ft. x 2-1/2" flex hose, 2 pc. 2-1/2" extension wand, handle with air control, cartridge filter, foam filter, 14" floor sweep with squeegee insert, gulper tool, crevice tool and hanging accessory storage bag

Tank water drain



\$299.99

2000W GASOLINE DIGITAL INVERTER GENERATOR

KCG-2001i

- Powerful 3 HP, 4 stroke air cooled motor
- Sine wave digital inverter generator provides stable current to power voltage-sensitive electronics
- DC USB port: 5V/2.1 Amp.
- DC cigarette lighter socket: 12V/8 Amp. DC output
- AC duplex outlet: 120V/20 Amp. AC output



\$599.99

Optional

K-X2P
Parallel Cable Kit for connectivity between two inverters

\$99.99



3800W DUAL FUEL GASOLINE/PROPANE DIGITAL INVERTER GENERATOR

KCG-3800i-DF

- Powerful 5 HP, 4 stroke air cooled motor
- Sine wave digital inverter generator provides stable current to power voltage-sensitive electronics
- Duplex outlets: 120V/20 Amp. AC
- Twist lock outlet: 120V/30 Amp. AC
- DC USB ports (A & C): 5V/2.1 Amp. DC output for charging smartphones, tablets or any USB powered equipment



\$849.99

Comes with propane tank connection cable, Nema L5-30P/Nema TT30R RV adaptor

5000W DUAL FUEL GASOLINE/PROPANE DIGITAL INVERTER GENERATOR

KCG-5000i-DF

- Powerful 8 HP, 4 stroke air cooled motor
- Sine wave digital inverter generator provides stable current to power voltage-sensitive electronics
- DC USB port: 5V/2.1 Amp.
- DC cigarette lighter socket: 12V/8 Amp. DC output
- AC duplex outlet: 120V/20 Amp. AC output
- AC twist lock outlet: 120V/30 Amp. AC output



\$1199.99

Comes with propane tank connection cable, Nema L5-30P/Nema TT30R RV adaptor



PALLET TRUCKS

KC-2145N-NYL

(21" X 45")
Nylon wheels

429.99

KC-2748N-NYL

(27" X 48")
Nylon wheels

429.99

KC-2748NP

(27" X 48")
Poly wheels

429.99



5,500 lbs capacity

Max. raised height of forks 7 1/2"
Min. height of forks 2.95"

QUICK RELEASE FOOT PEDAL

QUICK RELEASE FOOT PEDAL

QUICK RELEASE FOOT PEDAL

15000W V-TWIN GASOLINE GENERATOR WITH ELECTRIC START

KCG-15000GE

- Powerful 20 HP, V-Twin horizontal shaft 4 stroke air cooled motor
- AVR system and electronic ignition
- Two duplex outlets: 120V/20 Amp. AC
- Twist lock outlet: 120V/30 Amp. AC
- Outlet: 120V/240V/50 Amp. AC
- AC double throw circuit breaker and resets
- Terminals: 12V/8.3 Amp. DC with DC reset

AUTO-IDLE DOWN FUNCTION extends running time by automatically adjusting engine speed to idle when not under load



\$2499.99



GASOLINE ENGINES WATER PUMP HOSE KITS

- Ideal for compressors, generators, pressure washers, go-karts and log splitters
- Counterclockwise drive shaft direction

KCG-65

Powerful 6.5 HP, 4 stroke air cooled OHV engine

\$229.



KCG-130

Powerful 13 HP, 4 stroke air cooled OHV engine

\$449.



Each hose kit comes with a type A threaded camlock adaptor

\$119.99

CLEAR PVC REINFORCED SUCTION HOSES

KW-252

2" X 25 ft

\$199.99

KW-253

3" X 25 ft

\$89.99

KW-502

2" X 50 ft

\$119.99

KW-503

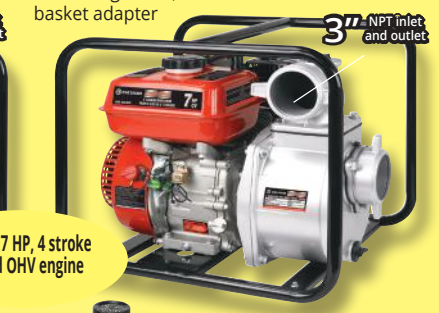
3" X 50 ft



GASOLINE WATER PUMPS

- 105' (KCG-2WPG) or 92' (KCG-3WPG) total head lift (total height at sea level, to which water can be raised above original water level)

- Oil sensor shuts off engine when oil level is low
- Comes with 3 wire clamps, 2 hose adapters, 2 rubber gaskets, strainer basket and strainer basket adapter



Powerful 7 HP, 4 stroke air cooled OHV engine

Standard accessories

\$339.99

Standard accessories

\$399.99

GASOLINE/PROPANE GENERATORS

PORTABLE GASOLINE GENERATORS

1800W GASOLINE GENERATOR

KCG-1501GX

- Powerful 3 HP, 4 stroke air cooled OHV engine
- Low oil shut-off with indicator light
- Duplex Outlet: 120V/11.6 Amp. AC output
- Terminals: 12V, 8 Amp. DC output

\$379.99



5100W GASOLINE GENERATOR WITH WHEEL KIT

KCG-5100G

- Powerful 8 HP, 4 stroke air cooled OHV engine
- AVR system and electronic ignition
- Low oil shut-off with indicator light
- Two duplex outlets: 120V/20 Amp AC
- Twist lock outlet: 120V/240V/30 Amp AC

\$449.99



5100W DUAL/FUEL GASOLINE/PROPANE GENERATOR WITH ELECTRIC START

KCG-5101GE-DF

- Powerful 8 HP, 4 stroke air cooled OHV engine
- AVR system and electronic ignition
- Low oil shut-off with indicator light
- Two duplex outlets: 120V/20 Amp. AC
- Twist lock outlet: 120V/240V/30 Amp. AC
- Keyed electric start and easy start recoil starter
- AC double throw circuit breaker and resets for safe operation

\$599.99



6500W GASOLINE GENERATOR WITH ELECTRIC START & WHEEL KIT

KCG-6502GE

- Powerful 10 HP, 4 stroke air cooled OHV engine
- AVR system and electronic ignition
- Low oil shut-off with indicator light
- Two duplex outlets: 120V/20 Amp. AC
- Twist lock outlet: 120V/240V/30 Amp. AC

\$649.99



10000W GASOLINE GENERATOR WITH ELECTRIC START

KCG-10001GE

- Powerful 15 HP, 4 stroke air cooled OHV engine
- AVR system and electronic ignition
- Low oil shut-off with indicator light protects the engine
- Two duplex outlets: 120V/20 Amp. AC
- Two twist lock outlets: 120V/30 Amp. and 120V/240V/30 Amp. AC

\$899.99



12000W GASOLINE GENERATOR WITH ELECTRIC START

KCG-12000GE

- Powerful 18 HP, 4 stroke air cooled OHV engine
- AVR system and electronic ignition
- Low oil shut-off with indicator light protects the engine
- Two duplex outlets: 120V/20 Amp. AC
- Twist lock outlet: 120V/240V/30 Amp. AC
- Outlet: 120V/240V/50 Amp. AC

\$999.99



12000W DUAL/FUEL GASOLINE/PROPANE GENERATOR WITH ELECTRIC START

KCG-12001GE-DF

- Powerful 18 HP, 4 stroke air cooled OHV engine
- AVR system and electronic ignition
- Low oil shut-off with indicator light
- Duplex outlet: 120V/20 Amp. AC
- Twist lock outlet: 120V/240V 30 Amp. AC
- Outlet: 120V/240V/50 Amp. AC
- Keyed electric start and easy start recoil starter
- AC double throw circuit breaker and resets
- Terminals: 12V/8.3 Amp. DC and DC reset

\$1199.99



GENERATOR EXTENSION CORDS

Converts a Nema L14-30P 240V 30 Amp Twist Lock plug into Nema 5-15/20R 120V 20A receptacles

K-L1430-10

Extension cord length: 10 feet
Gauge (AWG)/Cord: 12 (SJTW 4/C)



\$39.99

K-L1430R-25

Extension cord length: 25 feet
Gauge (AWG)/Cord: 10 (SJTW 4/C)



\$99.99

K-L1430-25-4T

Extension cord length: 25 feet
Gauge (AWG)/Cord: 10 (STW 4/C)



\$99.99

K-L1430-25EXT

Extension cord length: 25 feet
Gauge (AWG)/Cord: 10 (SJTW 4/C)



\$99.99

50 AMP. GENERATOR ADAPTOR CORD

Nema 14-50P 120/240V plug to Nema L14-30R 120/240V twist lock receptacle
K-1450P-2
Cord length: 1.5 feet
Gauge (AWG)/Cord: 10 (STW 4/C)



\$69.99

GENERATOR HOME CONNECTION KIT

K-X7500

Outdoor to indoor receptacle kit
Comes with 6 outlet power panel, generator power inlet box, 1/2" rigid PVC conduit, 1-1/4" spade bit, 1/2" PVC sleeve connector, 2 insulating gaskets and mounting hardware



\$109.99

MILLING DRILLING MACHINES & ACCESSORIES

15" VARIABLE SPEED INDUSTRIAL DRILL PRESS



15" FLOOR VARIABLE SPEED DRILL PRESS

12" BENCH VARIABLE SPEED DRILL PRESS

KC-12HS-VS
 • Powerful 1/2 HP, 5 Amp motor.
 • Variable speeds (580 - 3200 RPM)
 5/8" drill chuck, chuck key

Digital Readout
 Mechanical variable speed system



\$499.99



KC-15HS-VS
 • Powerful 3/4 HP, 8.6 Amp. motor
 • Variable speeds 2 (280 - 1100/ 900-3300) RPM
 5/8" drill chuck, chuck key

\$699.99

17" LONG STROKE DRILL PRESS with SAFETY GUARD



LONG STROKE

KC-119FC-LS
 • 12.5 Amp. motor
 • 12 speeds (255-2750 RPM)
 • Spindle taper MT #3
 • 16 15/16" swing
 • 6" stroke
 • 3/4" chuck

\$1099.

22" DRILL PRESS with SAFETY GUARD & LIMIT SWITCH



DRILL PRESS CHUCK SAFETY GUARD KM-122 Fits KC-122FC
\$29.99

KC-122FC
 • 12.5 Amp. motor
 • 1 1/4" capacity
 • Spindle taper MT #4
 • 12 speeds (180-4200 RPM)
 • 4 3/4" stroke
 • 3/4" chuck

\$1199.

KC-122FC-LS
 • 12.5 Amp. motor
 • 1 1/4" capacity
 • Spindle taper MT #4
 • 12 speeds (180-4200 RPM)
 • 4 3/4" stroke
 • 3/4" chuck

\$1299.



KC-30HS-VS
 • Powerful 1 HP motor
 • E-stop 2 step activation safety switch with line voltage interruption
 • Variable speeds: 400-5,000 RPM
 • 5/8" drill chuck and key

\$2999.

29 PC. TITANIUM DRILL BIT SET



\$39.99

CROSS SLIDE VISES



4"- KCV-4N **\$69.99**
 5"- KCV-5N **\$99.99**
 6"- KCV-6N **\$129.99**

DRILL PRESS VISES



3"-KPV-3 **\$19.99**
 4"-KPV-4 **\$24.99**
 5"-KPV-5 **\$39.99**
 6"-KPV-6 **\$49.99**

KEYLESS DRILL CHUCKS



KDC-12X 1/2"JT#33 **\$79.99**
 KDC-58X 5/8"-JT#3 **\$99.99**
 KDC-34X 3/4"-JT#4 **\$129.99**

COMPOUND SLIDE TABLE



KCT-618 \$249.99
 • 6" X 18 1/2" - 1/2" T- slots

52 PC. CLAMPING KITS



KCL-5212 \$89.99
 Fits 1/2" table slots
KCL-52 \$89.99
 Fits 5/8" table slots

20 PC. TITANIUM COATED END MILL SET



KM-120 \$199.99
 2 & 4 Flute (10 pcs. each) Imperial, Single End

HEAD TILTS 90° TO THE LEFT AND 30° TO THE RIGHT



21" GEARHEAD DRILLING MACHINE WITH SAFETY GUARD & LIMIT SWITCH
KC-40HS (220V)
KC-40HS-6 (600V)
 • 1.5 HP Motor
 • Forward & Reversing Switch
 • 1 1/4" Drilling Capacity
 • 20 7/16" Swing
 • Spindle Taper MT#3
 • 6 Speeds (60-1500 RPM)
 • Face Mill Capacity 4"
 • End Mill capacity 3/4"

\$4999.

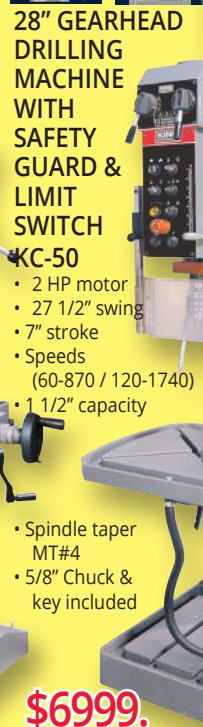
HEAD TILTS 90° TO THE LEFT AND 30° TO THE RIGHT



21" GEARHEAD DRILLING/MILLING MACHINE WITH SAFETY GUARD & LIMIT SWITCH
KC-40HC (220V)
KC-40HC-6 (600V)
 • 1.5 HP Motor
 • Forward & Reversing Switch
 • 1 1/4" Drilling Capacity
 • 20 7/16" Swing
 • Spindle Taper R-8
 • 6 Speeds (60-1500 RPM)
 • Face Mill Capacity 4"
 • End Mill capacity 3/4"
 • Working surface of table 23"x 7 1/2"

\$5999.

POWER DOWNFEED & TAPPING



28" GEARHEAD DRILLING MACHINE WITH SAFETY GUARD & LIMIT SWITCH
KC-50
 • 2 HP motor
 • 27 1/2" swing
 • 7" stroke
 • Speeds (60-870 / 120-1740)
 • 1 1/2" capacity

• Spindle taper MT#4
 • 5/8" Chuck & key included

\$6999.

RADIAL DRILLING MACHINE WITH SAFETY GUARD

KC-35/SS-35
 • 1.5 HP Motor
 • 21 1/4" Max. distance spindle nose to table
 • Speeds 5(340-3000 R.P.M.)
 • 5 1/4" Spindle stroke
 • MT #3 Spindle taper
 • 38 1/2" swing
 • 4 1/2" Column diameter
 • 21 5/8" x 19 5/8" Table dimensions
 • 14" Head travel
 • 5/8" Size of T-Slot on table
 • Forward reverse switch
 • 1/2" chuck with key, safety guard and stand



\$4999.