

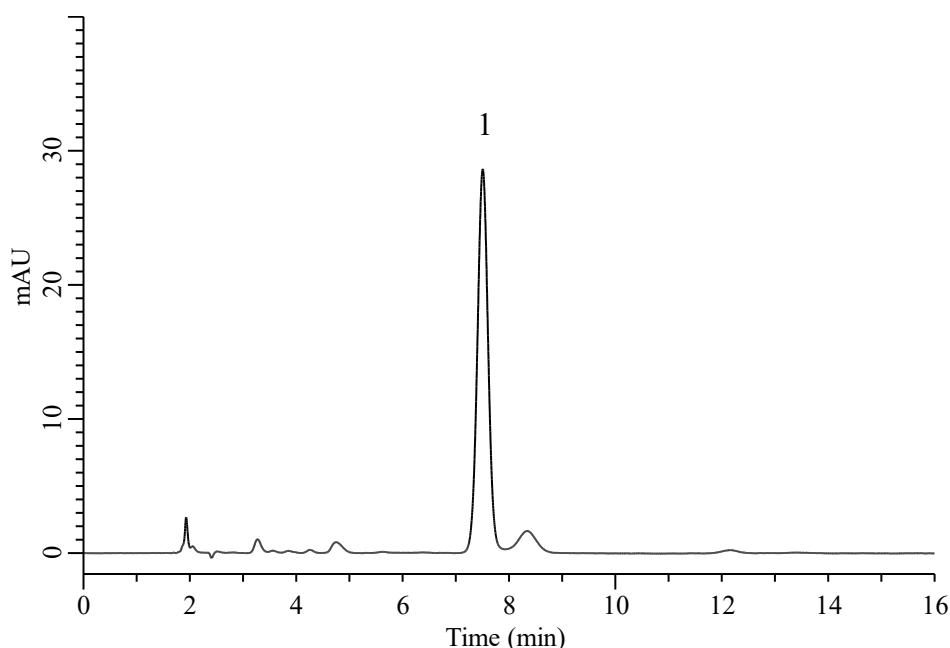
# InertSearch™ for LC

Inertsil® Applications

## Analysis of Lithium lactylate

(Under the Condition of food additive analysis method in food,  
Calcium Stearoyl Lactylate and Sodium Stearoyl Lactylate)

Data No. LB856-7111



### Conditions

**System** : Chromaster HPLC system (HITACHI)

**Column** : InertSustain C8 (GL Sciences Inc.)  
(5  $\mu$  m, 150 x 4.6 mm I.D.)

**Column Cat. No.** : 5020-16027

**Eluent** : A) CH<sub>3</sub>OH  
B) Solution\*  
A/B = 25/75, v/v

**Flow Rate** : 1.0 mL/min

**Col. Temp.** : 40 °C

**Detection** : VIS 400 nm

**Injection Vol.** : 20  $\mu$  L

**Sample** : Standard

### Analyte:

1. Lithium lactylate 10  $\mu$  g/mL

\* 0.1 vol% Formic Acid: Take 11 mL of formic acid and make up to 1000 mL with water. Dilute 10 times and use.