

DT Series Gearless Turbo Blower



Power: 20 to 500 HP / 15 to 375 kW

Flow: 150 to 15,000 SCFM / 250 to 25,000 nm³/h

Pressure: 2 to 20 PSI / 0.1 to 1.4 bar

Air, Pressure

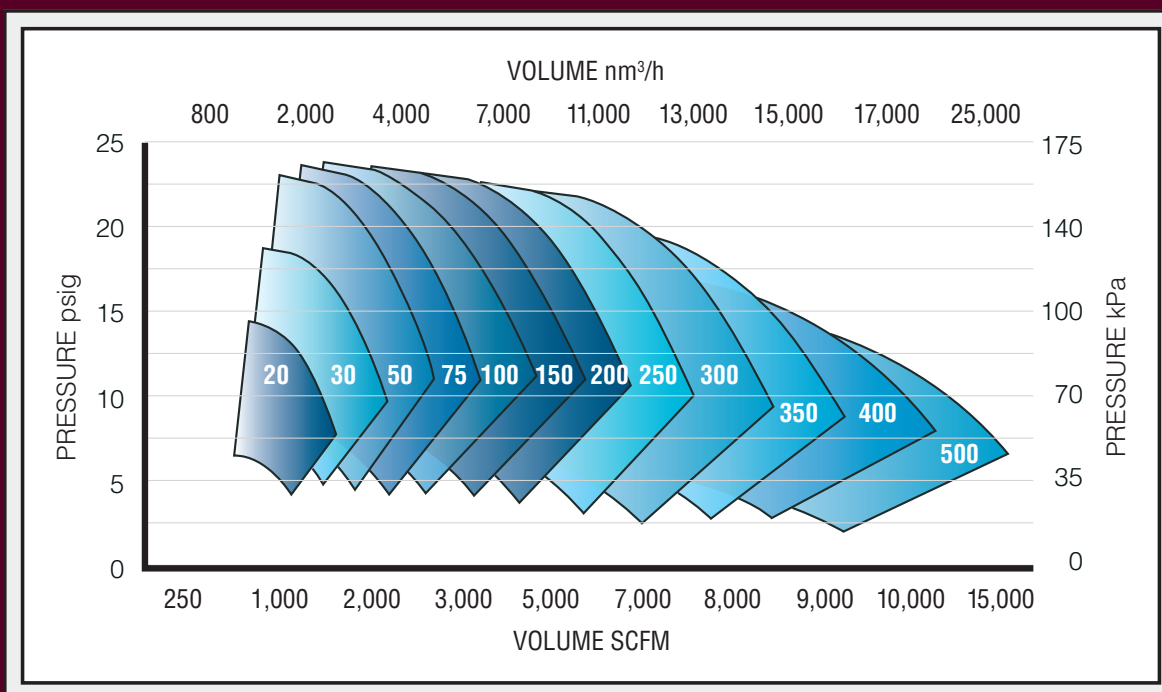
Your ONE Solution for Blower Systems

DT Series Gearless Turbo Blower

With more than 5,000 installations since 2006, our gearless (high speed) turbo blower represents the most successful and largest installed base in the world. As the leader of this technology our product has proven reliability and performance in a market with many entries.

Product Features

- High Efficiency
- Small Footprint
- No Lubrication
- Low Maintenance
- Self Cooled
- Completely Pre-Packaged
- Sound Levels Near 80 dBA



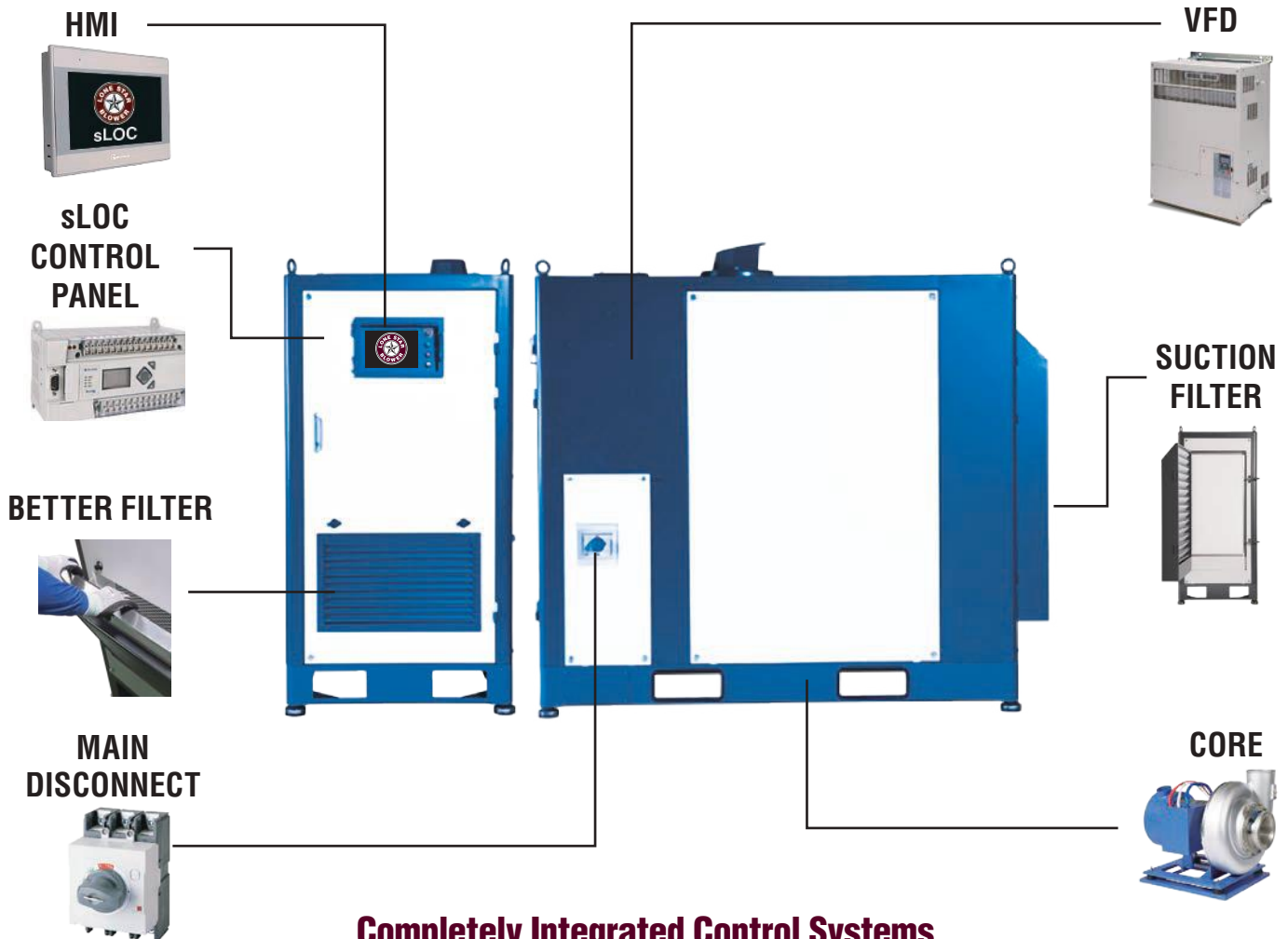
**Multi-core packages available to
suit your application**

DT Series Gearless Turbo Blower

Advanced technology with a high speed direct coupled motor and impeller that operates lubricant free.

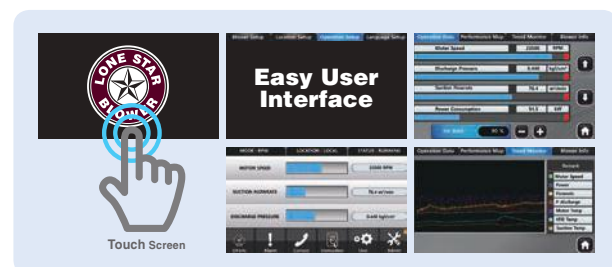
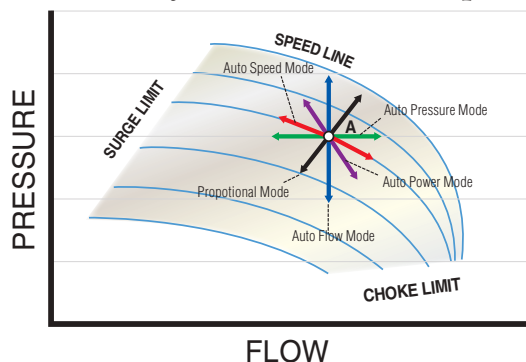
Packaged System

Complete system is integrated in a single enclosure. Add power and piping and it is ready to get to work. Includes controller, variable frequency drive, filter, and preconstructed in a sound enclosure.



Completely Integrated Control Systems

On board control safely operates the blower system and can integrate with any network. Easy to interface and operate.

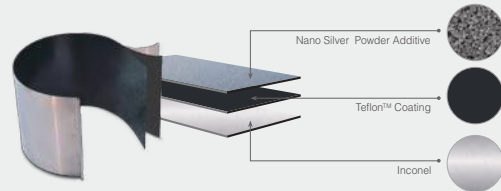


DT Series Gearless Turbo Blower

Advanced technology with a high speed direct coupled motor and impeller that operates lubricant free.

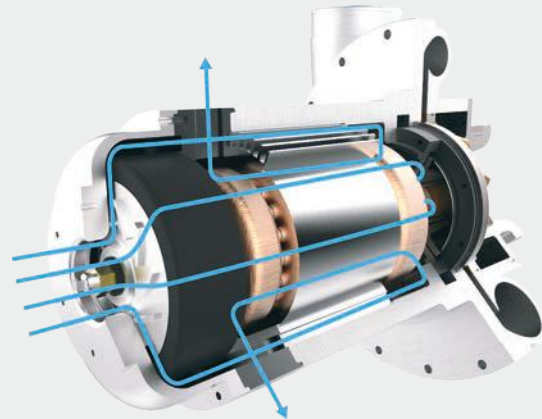
Bearings: Air Bearing Technology

Nano Silver Coating on the bearing surface combined with triple stage heat treatment offers the longest start/stop guarantees in the world with over 100,000 stop/starts.



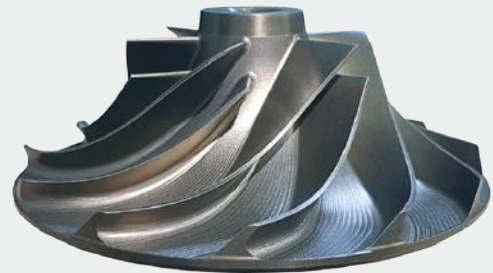
Permanent Magnet High Speed Motor

High speed permanent magnet motors offer superior efficiency at partial load as compared to traditional induction motors. The patented NO-0675821 forced cooling systems of our motors allow a longer life, even in the hottest environments.



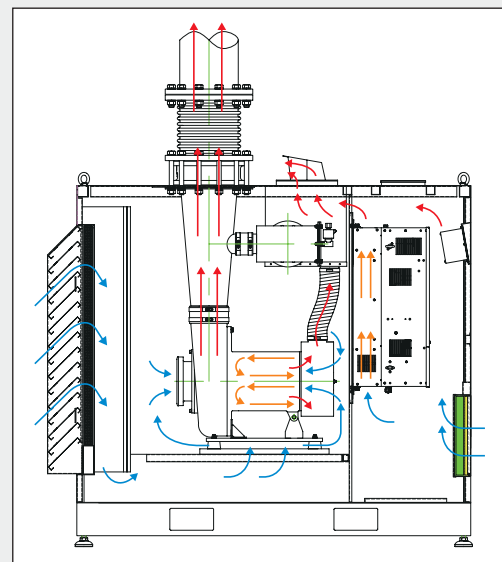
Aerodynamic Perfection

Impeller design achieves three targets. Wide turndown, stable rise to surge, and high efficiency. Five axis machining of forged aluminum with a final anodized coating for performance and hardness.



Cooling System

Completely integrated and self cooling without the use of additional fans. Inlet air to the compressor drives all cooling air through the motor and VFD while heated air is discharged separately to improve overall efficiency. Patent No. 10-0675821



Core Technology

Motor Coil

Cooling

Rotor

Motor Heat Sink

Discharge

Scroll

Inlet

Shroud

Impeller

Thrust Bearing

Motor Stator

Journal Bearing

Bearing Housing

LONE STAR BLOWER



5

LONE STAR GLOBAL NETWORK

We have locations around the world to serve you



**We manufacture the most advanced line
of turbo blowers in the world.**

Please visit our website at www.lonestarblower.com or
call us today regarding your next application.

GL

Geared Turbo



LS

Multistage Turbo



DT

Gearless Turbo



CS

Control Systems



PS

Packaged Systems



AM

Aftermarket



Lone Star Blower

8883 West Monroe Road
Houston, Texas 77061 USA
Tel: +1 832-532-3112
Fax: +1 832-532-3115
Email: info@lonestarblower.com