



EuroLuxe

Luxury European Bed Linen  
AUSTRALIAN CATALOGUE

With love from Portugal



EuroLuxe

Bringing the best European Linen Down Under

# GALLERY

---

Linen

- 8 -

Classical & Contemporary

- 19 -

The Relaxed Look

- 54 -

Bedspreads & Coverlets

- 65 -

---

WHAT'S IN A SET?

- 89 -

---

INDEX

- 93 -

---

# Our contribution to a sustainable world



## Natural fibres safeguarding biodiversity

BOVI supports sustainable cotton plantations, which commit to reduce or eradicate the use of toxic pesticides and harmful chemicals.



## Oeko-Tex and REACH standards certified production

No harmful chemicals are used in any stage of BOVI's production, thus minimising any environmental or health risk.



## Smart use of resources

We catch rain water to treat and dye our fabrics which we also clean and reuse throughout our production facilities.

# The Gallery

A closer look at some of our collections



# Linen Collections

# \_ VINTAGE LINEN \_

Doona Set

100% Stonewashed European Linen



Available in colours: flax, white and grey

In this photo matched with a SIMPLY COTTON bedspread and Euro sham in grey

# \_ HUDSON LINEN \_

Coverlet, Bed runner & Shams 100% European Linen with diamond design quilting



Available in colours: flax and white

In this photo matched with MILAN Doona Cover in White and LINEIA sheet set

# \_ HUDSON LINEN \_

Coverlet Bed Runner & Shams 100% European Linen with diamond design quilting



In this photo matched with LINEIA sheet set

— CRETA —

Coverlet & Shams

100% European Linen—washed  
Available in colours: flax and white



\_CRETA\_

Coverlet & Shams

100% European Linen—washed  
Available in colours: flax and white



— LINEIA —

Sheet Set

100% Long Staple Cotton Sateen - 300 Thread Count  
with 100% Linen Flange



\_MARO\_

Sheet Set

100% Long Staple Cotton Percale - 200 Thread Count  
with 100% Linen Flange



\_MILAN\_

Doona Set

100% Stonewashed European Linen



Available in: flax (natural)

—MILAN—

Doona Set

100% Stonewashed European Linen



In this photo matched with SIMPLY SATEEN sheet set



# Classical & Contemporary Collections

**NEW**

\_BRISE\_

Doona Set with Euro Shams

100% Long Staple Cotton Sateen  
300Thread Count



In this photo, matched with Vincent Sheets and Creta Quilt

NEW

\_VINCENT\_

Sheets

100% Long Staple Cotton Sateen  
300 Thread Count



Available in colours: mist, olive and latte

**NEW**

# \_ROSSIO\_

Sheets and Cushion

100% Long Staple Cotton Sateen  
300 Thread Count



Only available in olive colour

# \_HERRON\_

Sheet Set & Doona Set

100% Long Staple Cotton Sateen  
300 Thread Count



Available in: colours: white/white or white/silver

## \_GLAMOROUS\_

Quilt with Shams  
Sheets

100% Long Staple Cotton Sateen  
300Thread Count



Glamorous sheets with black embroidery and black quilt with cream piping.

## \_GOLDEN\_

Sheets with Euro Shams

100% Long Staple Cotton Sateen  
300Thread Count



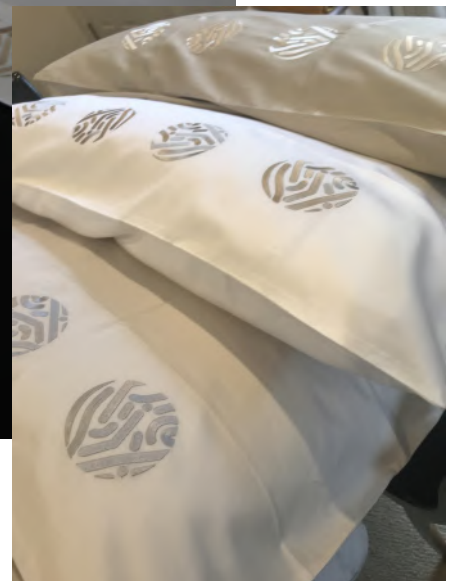
Golden sheets and Euro shams.

In this photo matched with the Glamorous black quilt and shams.

# \_CORUCHE\_

Sheets & Shams

100% Long Staple Cotton Sateen  
300 Thread Count



Available in white, silver and taupe  
In this photo matched with the Glamorous black quilt

# \_CORUCHE\_

Sheets & Shams

100% Long Staple Cotton Sateen  
300 Thread Count



Available in white, silver and taupe

In this photo matched with the Leonor quilt

# \_CLASSIC HOTEL\_

Sheet Set & Doona Set

100% Long Staple Cotton Percale  
200 Thread Count



Embroidered piping in colour options of white, dove (seafoam) ,taupe, grey, blue and black

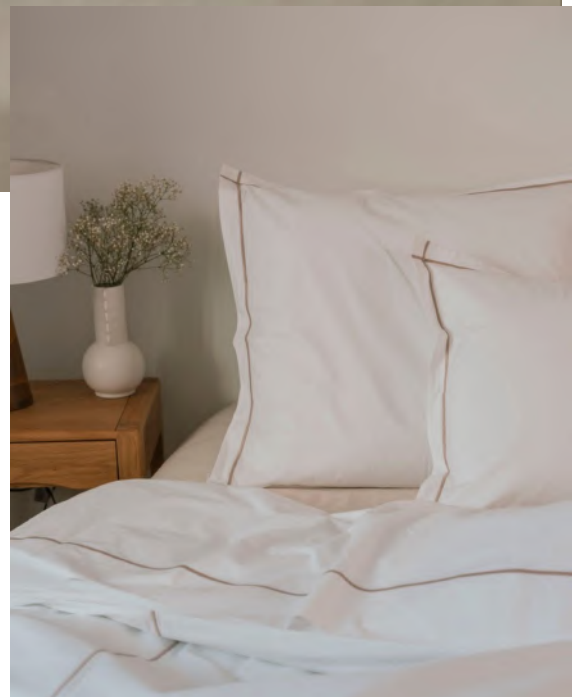
In this photo matched with MONROE Coverlet



# \_CLASSIC HOTEL\_

Sheet Set & Doona Set

100% Long Staple Cotton Percale  
200Thread Count



# \_CAETANO\_

Sheet Set & (Reversible) Doona Set

100% Long Staple Cotton Sateen  
300Thread Count



Reversible Doona Cover  
Available in: White/Taupe

In this photo matched with BEAM coverlet in taupe colour

# \_CAETANO\_

Sheet Set & (Reversible) Doona Set

100% Long Staple Cotton Sateen  
300 Thread Count



Sheet colours—White/Blue, White/Blush, White/Taupe  
Shams available in White/Blush and White/Taupe (reversible)

# — ESTATE —

Estate Doona Set & Sheet Set

100% Long Staple Cotton Sateen

500 Thread Count



Doona Set available in white/white

Sheets and Shams available in: colours: white/  
white, white/ivory, white/latte, white/silver

**NEW**

# \_ WINDSOR \_

Sheet Set ,

100% Long Staple Cotton Sateen  
300 Thread Count



Available in: white/latte

In this photo matched with MONROE coverlet in latte colour

\_ DEVERE \_

Sheet Set

0% Long Staple Cotton Sateen  
300 Thread Count



Available in: white/dove.& white/white

# \_SYLVIA\_

Sheet Set & Doona Set

100% Long Staple Cotton Sateen  
300 Thread Count



In this photo matched with a CARTHAGO cushion and a SIMPLY COTTON bedspread and Euro sham in white

\_MIMOSA\_

Doona Set & Shams

100% Cotton Seersucker



Available in: white/taupe

**NEW Colour**

— FLORA —

Doona Set & Shams

100% Cotton Seersucker



Available in: blue and Blush



\_MALONE\_

Sheet Set & Doona Set

100% Long Staple Cotton Sateen  
300 Thread Count



Available colours: white/blue, white/dove

\_MALONE\_

Sheet Set & Doona Set

100% Long Staple Cotton Sateen  
300 Thread Count



Available in: colours: white/blue or white/dove (seafoam)

# \_PACIFIC\_

Sheet Set & Doona Set

100% Long Staple Cotton Sateen  
300 Thread Count



Available colours: white/white (NEW), white/ivory and white/silver

\_PACIFIC\_

Sheet Set & Doona Set

100% Long Staple Cotton Sateen  
300 Thread Count



# \_PAROS\_

Sheet Set

100% Long Staple Cotton Percale  
400 Thread Count



# \_PAROS\_

Sheet Set

100% Long Staple Cotton Percale  
400 Thread Count



In this photo matched with Beam coverlet in French blue

# \_ SEDONA \_

Sheet Set & Doona Set

100% Long Staple Cotton Sateen  
300 Thread Count



In this photo matched with ELOISE coverlet and SIMPLY COTTON bedspread

# \_ SEDONA \_

Sheet Set & Doona Set

100% Long Staple Cotton Sateen  
300 Thread Count



The Sedona Sham in white/silver

\_SIMPLY PERCALE\_

Sheet Set

100% Long Staple Cotton Percale  
400 Thread Count



# \_LAGOS\_

Sheet Set & Doona Set

100% Long Staple Cotton Percale  
200 Thread Count



Sheet set available colours: aqua, blue, grey and taupe



Pillowcase



Shams & Cushion

# \_SIMPLY SATEEN\_

Sheet Set

100% Long Staple Cotton Sateen  
300 Thread Count



Available in white

\_PETALS\_

Sheet Set

100% Long Staple Cotton Sateen  
300 Thread Count



Available in latte

\_PEARLS\_

Sheet Set & Doona Set

100% Long Staple Cotton Sateen  
300 Thread Count



# \_ ESCADA \_

Sheet Set

100% Cotton Percale  
200 Thread Count



Available in latte colour

In this photo matched with MONROE coverlet in  
Latte colour

**NEW**

— INFINITY —

Sheet Set

100% Cotton Sateen  
300 Thread Count



In this photo, matched with the Kos coverlet

**NEW**

— LARISSA —

Sheet Set

100% Cotton Sateen  
300 Thread Count



In this photo, matched with the Plumeria velvet coverlet

# Relaxed Collections

# \_COMPORTA\_

Doona Set

(front) 100% Cotton Jacquard

(back) 100% Long Staple Cotton Percale 200 Thread Count



Available in colours: white and blue



# \_AMALIA\_

Doona Set & Sheet Set

100% Tumbled Long Staple Cotton Percale  
200 Thread Count

Olive embroidery on a natural base



In this photo and the facing page matched with SIMPLY COTTON bedspread & Euro shams

# \_AMALIA\_

Doona Set & Sheet Set

100% Tumbled Long Staple Cotton Percalé  
200 Thread Count

Olive embroidery on a natural base



# \_ FISHBONE \_

Doona Set

100% Long Staple Cotton washed chambray



In this photo above matched with Spring cushion

**NEW**

\_ PALMA \_

Sheet Set & Shams

100% Long Staple Cotton Percale  
200 Thread Count



Available in colours: sand and white

**NEW**

\_OCTOBRE\_

Doona Set

Front: 100% Cotton Jacquard  
Back Plain Fabric 100% Cotton



**NEW**

\_OCTOBRE\_

Doona Set

Front: 100% Cotton Jacquard  
Back Plain Fabric 100% Cotton



# \_SOHO\_

Sheet Set & Doona Set

100% Tumbled Long Staple Cotton Sateen  
300 Thread Count



Available in colours: Doona Set in mist  
Sheets in pearl, mist and pink

In this photo, matched with LIPSY throw and BEAM coverlet on a  
Rose+Heather bespoke bed

\_ SOHO \_

Sheet Sets & Doona Set

100% Tumbled Long Staple Cotton Sateen  
300 Thread Count



Available in colours: Doona Set in mist  
Sheets in pearl, mist and pink



# Coverlets & Bedspreads

# \_ELOISE\_

Bedspread & Shams

100% Long Staple Cotton Sateen  
300 Thread Count



Now available in white, ivory and (new colour) silver

**NEW**

— ESTELLA —

Bedspread & Shams

100% Long Staple Cotton Sateen  
300 Thread Count



Available in latte colour

**NEW**

\_GRACE\_

Bedsread & Shams

100% Long Staple Cotton Sateen  
300 Thread Count



Available in white

# \_BEAM\_

Coverlet & Shams

100% Long Staple Cotton Sateen

300 Thread Count



Available in colours: mauve, taupe and French blue

# \_LEONOR\_

Coverlet and pillowcases

100% Long Staple Cotton Sateen  
300Thread Count



Available in Silver

In this photo matched with the Coruche sheets in Silver colour.

**NEW**

\_Kos\_

Coverlet and Euro Shams

100% Long Staple Cotton Sateen  
300 Thread Count



In this photo matched with the Infinity sheet set.

**NEW**

# \_ PLUMERIA \_

Coverlet and Cushions

Italian Velvet



In this photo matched with the Larissa sheet set.

# \_GLAMOROUS\_

Quilt with Shams

100% Long Staple Cotton Sateen  
300 Thread Count



Glamorous sheets with black embroidery and black quilt with cream piping.

## \_ HAMILTON \_

Bedspread/Coverlet, Bed runners & Euro shams

100% Long Staple Cotton Sateen- 300 Thread Count



Available in colours: taupe and white

## \_ HAMILTON \_

Bedspread/Coverlet, Bed runners & Euro shams

100% Long Staple Cotton Sateen- 300 Thread Count



Available in colours: taupe and white

In this photo matched with YANNI Throw and LAGOS sheets set in white/taupe

## \_ HUDSON LINEN \_

Coverlet, Bed runner & Shams

100% European Linen  
with diamond design quilting



Available in colours: flax and white

# \_MONROE\_

Bedspread/Coverlet & Shams

100% Long Staple Cotton Sateen

300 Thread Count with channel design quilting



Available in colours: white, silver, taupe, latte and (NEW) ivory and (NEW) ocean blue

**NEW COLOUR**

\_LUCCA\_

Bedspread

100% Washed Cotton matelassé



Available in colours silver and latte

— DECOR —

Bedsread and Pillowcases

100% Stonewashed Cotton



# \_ DOTTY \_

Bedspread & shams

100% Washed Cotton matelassé

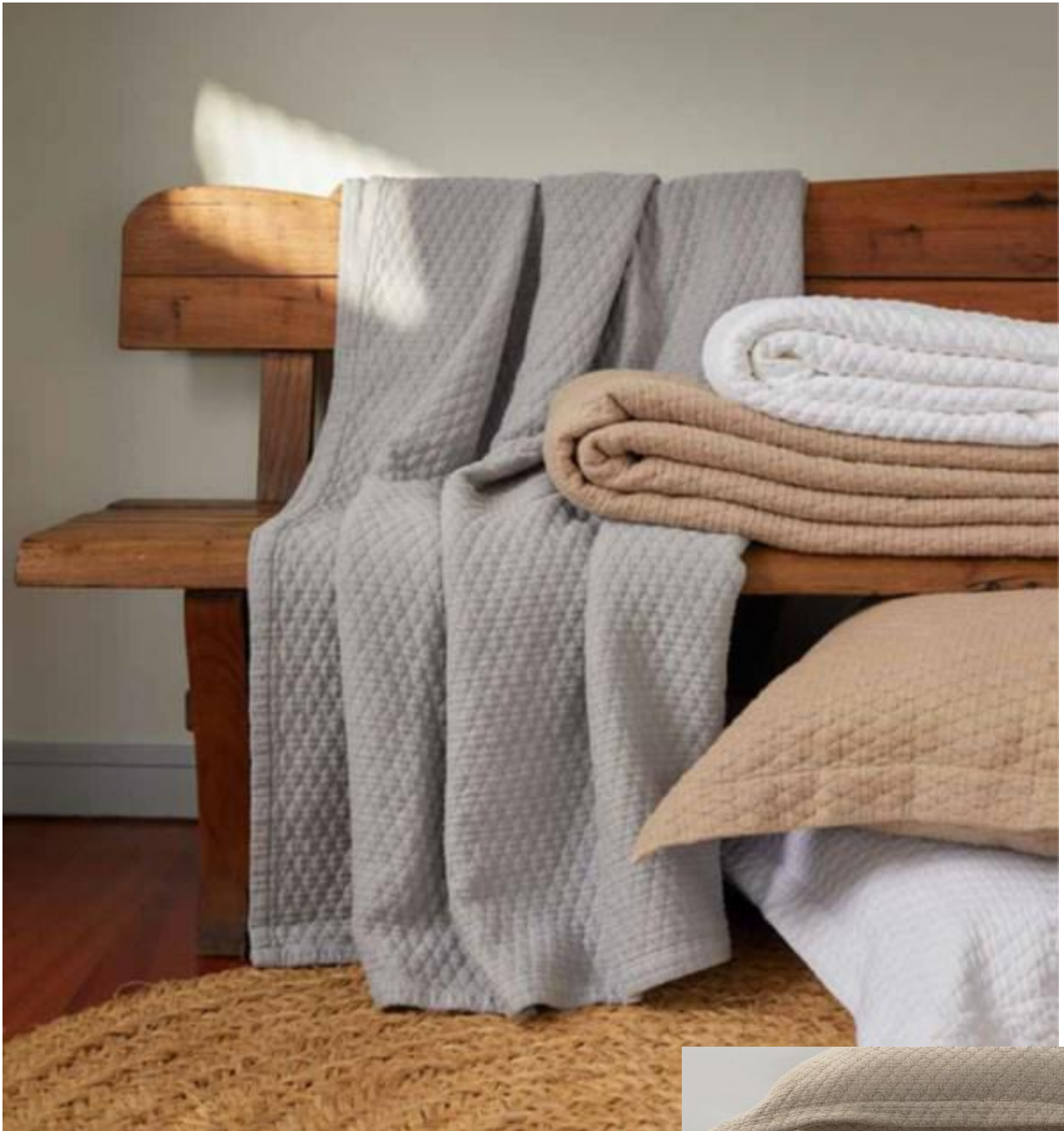


Available in: colours: dove, white or grey

# \_SIMPLY COTTON\_

Bedspread & shams

100% Washed Cotton matelassé



Available in colours: taupe, white, grey, dove



\_GIULIA & YANNI\_

Bedsread & pillowcases (Giulia) & Throw (Yanni)

100% Stone washed Cotton



Matched with Soho sheets and on a Rose+Heather bespoke bed

— LIPSY —

Throw & Cushions

90% Stonewashed Cotton, 10% linen



# \_ SUNSET \_

Bedspread and Pillowcases.

100% Cotton



Matched with LIPSY throw and MILAN pillowcases in white

# \_ TWEETS \_

Bedspread and Pillowcases

(Reversible—grey one side, blue the other).

100% Stonewashed Cotton



**NEW**

## \_ PORTO \_

Bedsread and Euro shams

(available in cream and taupe)

100% Stonewashed Cotton



**NEW**

— LEAVES —

Throw

100% Cotton



**NEW**

— NAZARE —

Bedsread and Shams

100% Stonewashed Cotton



**NEW**

— COIMBRA —

Bedsread and Euro shams

(available in cream and taupe)

100% Stonewashed Cotton



**NEW**

\_ FLUKE \_

Throw

100% Cotton



# A Quick Guide

What does it all mean?



## Sateen v Percale

Sateen (not to be confused with Satin) and Percale describe the way in which the cotton fabric is stitched. It has nothing to do with thread count.

Percale (aka plain) weave has the warp (vertical) and weft (horizontal) threads evenly alternating.

In sateen weave the weft threads “float” over several warp threads (usually four) at a time, resulting in smoother and more lustrous fabric.

Sateen, with its higher thread counts (that is, more densely packed yarns), tends to be softer but also heavier than percale. A higher thread count is more important for sateen because it reduces the likelihood of snagging the longer floats—the weft yarns that skim across several warp yarns.

What’s best? It comes down to personal preference.

Our ranges provide options in both.

## Thread Count

“Whats the thread count?” - this is the typical question many think determines quality

It doesn’t.

Technically, thread count means the number of threads woven together in a square inch. You count both lengthwise (warp) and widthwise (weft) threads. So 100 lengthwise threads woven with 100 widthwise threads produce a thread count of 200.

When you see counts above 300 for percale or 600 for sateen, that sometimes means the manufacturers are using *double*—the number of single threads twisted together in yarn—to artificially inflate the thread count, namely counting two-ply yarns as two yarns instead of one.

Single-ply yarn is more pliable and lends itself to softer fabrics than those containing multiple plies of yarn. Some of the highest quality sheets run from 200–500 TC.

The trick to quality cotton bed linen is is long staple cotton.

## Long Staple Cotton

Fabrics made of long-staple cottons fray less, pill less, wrinkle less, and even fade less than fabrics made with their short-staple counterparts.

This difference is especially important when selecting bedding, as it endures daily use over a longer period of time than almost any other type of cotton product.

Long-staple cotton sheets will feel luxurious longer, leading to a more comfortable night’s sleep for years to come.

Remember Length = Strength!

BOVI products are all made from long staple cotton.

# What's in a set?

As standard, our Sheet Set includes:

- One Fitted Sheet
- One Flat Sheet
- 2x standard Pillowcases (50x75) for Queen
- 2x King Pillowcases (50x90) for King and Super King

As standard our Doona Cover Set usually includes a 3 or 5 piece set

A set includes

- A Doona Cover

Either

- 2x Euro shams 65x65

And/or:

- 2x Oxford shams (with embroidery all around) 50x75 (Q, K), or 50x90 (SK)

## Housewife Pillowcases

We sell sets of (2) housewife Pillowcases separately for some of our collections.

# =Index=

<b>Page</b>	<b>Collection / Section</b>
	<b>Linen Collections</b>
7	Vintage Linen
8-9	Hudson Linen
10-11	Creta
12	Lineia
13	Maro
14-15	Milan
	<b>Classical &amp; Contemporary Collections</b>
18	Brise
19	Vincent
20	Rossio
21	Herron
22	Glamorous
23	Golden
24-25	Coruche
26-27	Classic Hotel
28-29	Caetano
30	Estate
31	Windsor
32	DeVere
33	Sylvia
34	Mimosa
35	Flora
36-37	Malone
38-39	Pacific
40-41	Paros
42-43	Sedona
44	Simply Percale
45	Lagos
46	Simply Sateen
47	Prtals
48	Pearls
49	Escada
50	Infinity
51	Larissa

# = Index =

## **Relaxed Collections**

53	Comporta
54-55	Amalia
56	Fishbone
57	Palma
58-59	Octobre
60-61	Soho

## **Coverlets & Bedspreads**

64	Eloise
66	Estella
66	Grace
67	Beam
68	Leonor
69	Kos
70	Plumeria
71	Glamorous
72,73	Hamilton
74	Hudson Linen
75	Monroe
76	Lucca
77	Décor
78	Dotty
79	Simply Cotton
80	Giulia & Gianni
81	Lipsy
82	Sunset
83	Tweets
84	Porto
85	Leaves
86	Nazare
87	Coimbra
88	Fluke



EuroLuxe



EuroLuxe

AUSTRALIA

Maria.Bamio@euroluxelinen.com

NZ +64 (0)21 451 918

AUS +61 (0)414 892 111

+34 604 05 31 06 (Spain and WhatsApp)

[www.euroluxelinen.com](http://www.euroluxelinen.com)

Exclusive Australian & New Zealand Distributor



AROHA IBERICA