

This timeless residence is grand yet inviting. The custom home was designed to blend classic architecture with a wonderful modern floorplan.

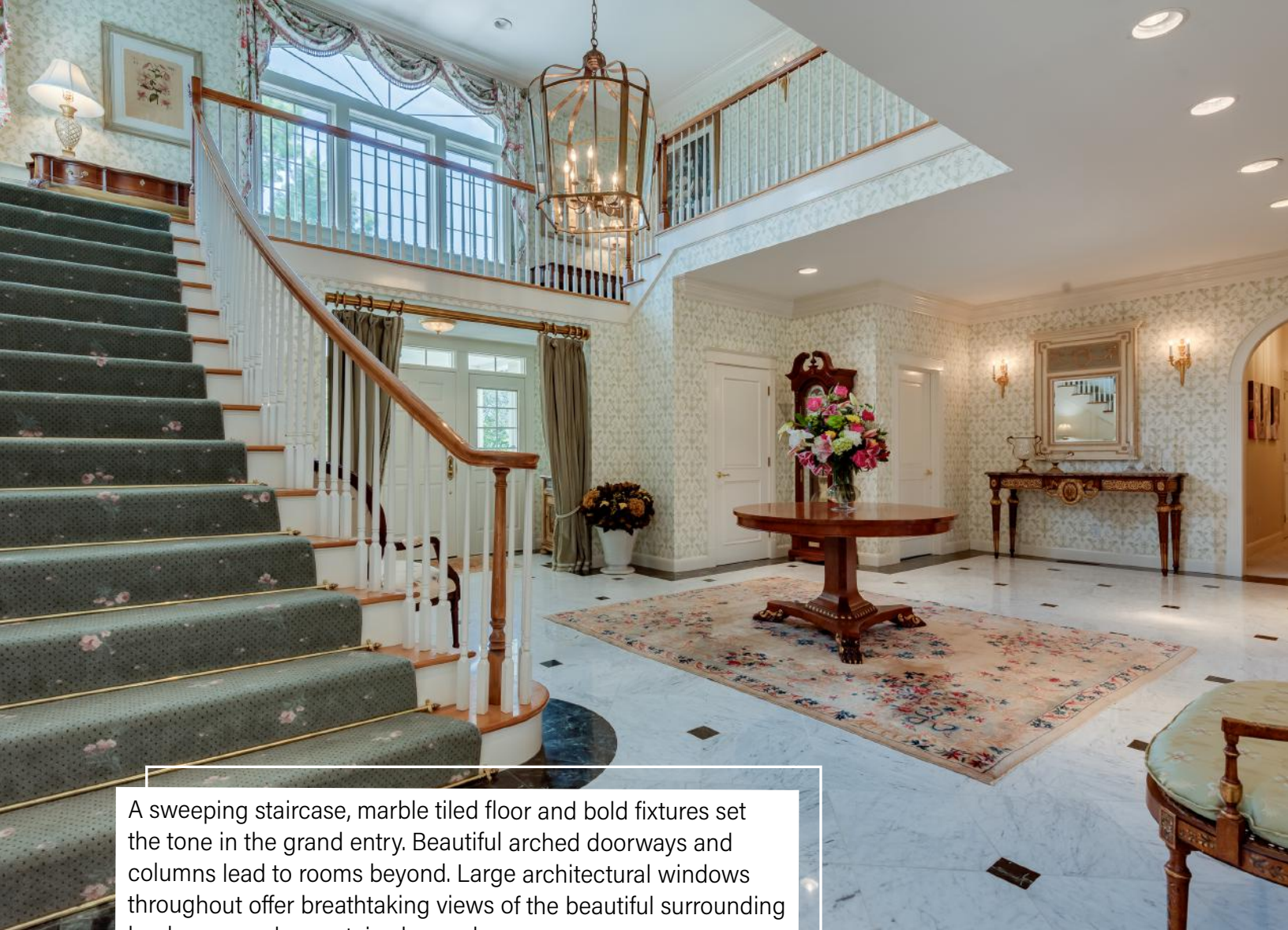
100 Oldfield Road



The residence is thoughtfully situated on 5 acres of manicured grounds with a backdrop of mature trees. The 9,500 sq ft home is exceptionally appointed inside and out.

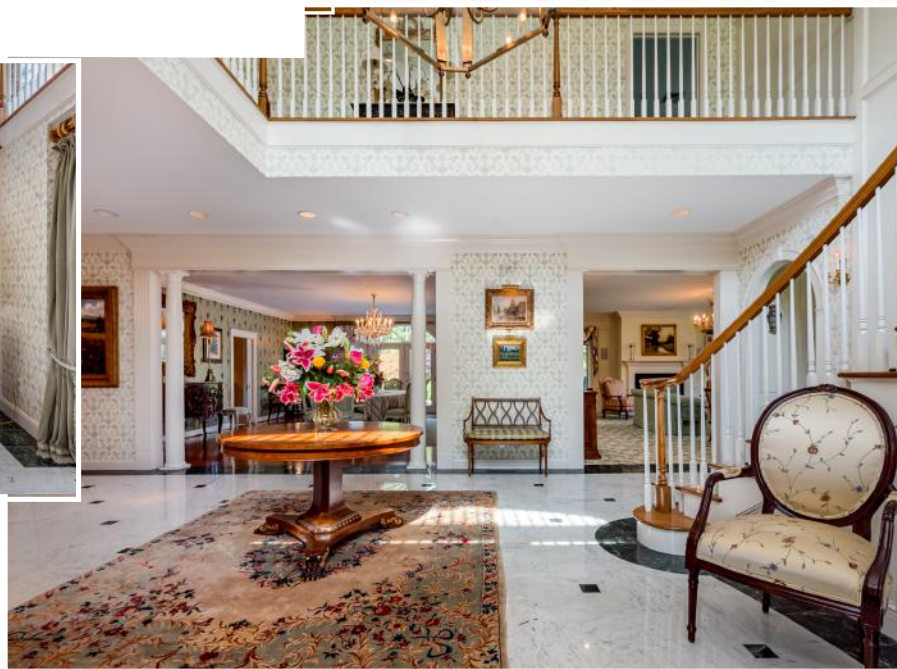


Exterior



A sweeping staircase, marble tiled floor and bold fixtures set the tone in the grand entry. Beautiful arched doorways and columns lead to rooms beyond. Large architectural windows throughout offer breathtaking views of the beautiful surrounding landscape and mountains beyond.

Foyer 27' x 18' Office (not shown) 16' x 14'



Foyer



Elegant custom Wilton carpeting flows through the formal living and music rooms. The walls are adorned with impressive raised panel millwork. Rooms are accented by brilliant chandeliers and custom window treatments. Attention to detail is evident in craftsmanship and décor.

Living Room 26' 9" x 24' 10" Music Room 15' x 14 '9"



Living Room

The dining room is of exceptional size and is serviced by a marvelous butler pantry / bar/ coffee bar area with abundant storage.

Dining Room 24' 10" x 20' 4"

Butlers Pantry/Wet Bar (not shown) 17' 10" x 12' 4"



Dining Room



An impressive stone fireplace anchors the family room which is located adjacent to the kitchen. Handsome bookcases line the facing wall. Multiple sets of doors open to the expansive patio.
24' 10" x 23' 8"



Family Room



Flow combined with function, state of the art appliances, two oversized islands and a large walk in pantry provide exceptional space for any chef. Rich wood cabinetry, sleek countertops, and unique island pendants create refined area for entertaining.

Kitchen 26' x 21' Breakfast Nook 18' 10" x 11' 9"



Kitchen



The primary suite is splendid with a fireplace and adjacent office or sitting area. Large architectural windows offer distant mountain views. The suite includes a stunning marble bath and thoughtfully designed dressing area with wardrobe storage.
Master Bedroom 26' x 24' 10" Sitting/Office 15' x 13'
Walk-in Closet 20' 4" x 14' Primary Bathroom 20' 4" x 10' 6"



Master Bedroom



Four generously sized guest suites, most complimented by wonderful built-ins flanking the picture windows, long window seats and organized walk in closets.
24' 11" x 17' 3", 20' 6" x 15' 7", 20' 8" x 16", (not shown) 27' x 12'



Guest Suites



Over 2,900 sq ft of finished space in the lower level offers an enormous recreation room, gym, bathroom with a steam shower, wine cellar, and bonus room. The outside includes garage parking for 5 plus.



Additional Features



A covered outdoor patio with large fireplace expands living and entertaining options.



Outdoor Patio



Lovely stone paths lead through magnificent hydrangea hedges and colorful perennial filled tiered gardens to the pristine pool. 5 manicured acres stretch to meet mature trees. A circular drive presents an elegant approach to the residence offering additional parking.



Grounds



Estimated areas

GLA FLOOR 1: 5030 sq. ft, excluded 1184 sq. ft
 GLA FLOOR 2: 4432 sq. ft, excluded 290 sq. ft
 Total GLA 9462 sq. ft, total scanned area 10773 sq. ft

FLOOR PLAN CREATED BY CUBICASA APP. MEASUREMENTS DEEMED HIGHLY RELIABLE BUT NOT GUARANTEED.



First Floor



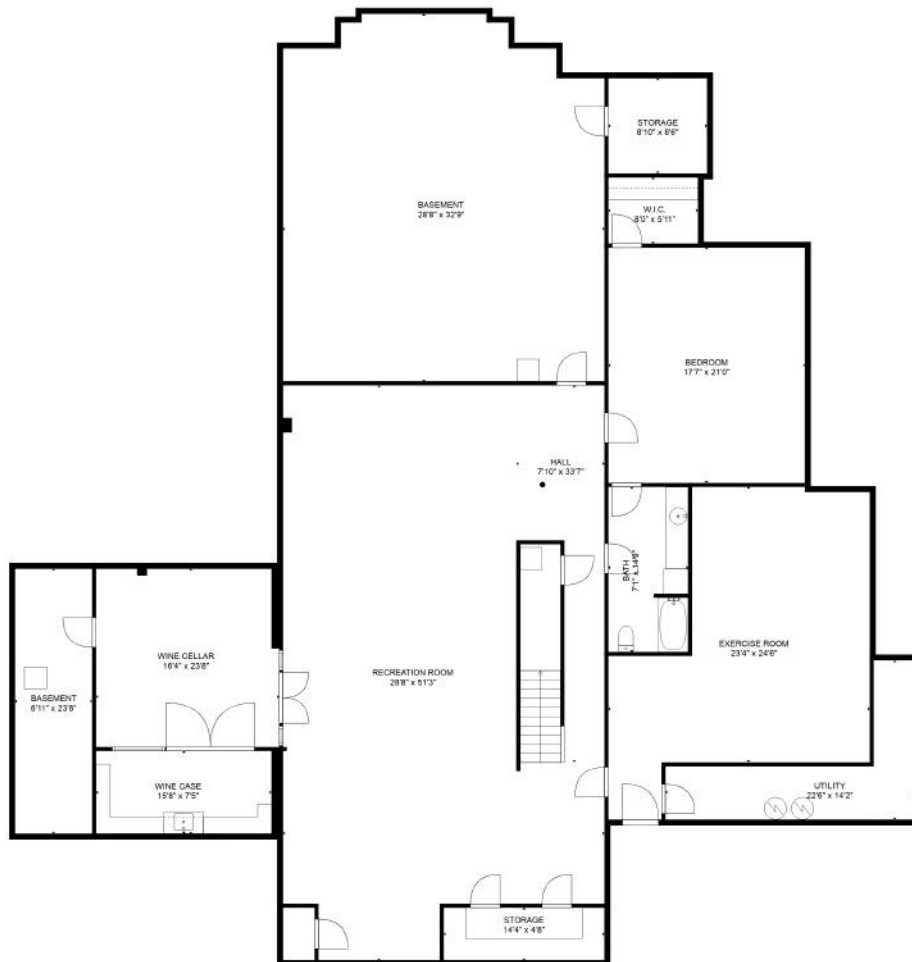
Estimated areas

GLA FLOOR 1: 5030 sq. ft, excluded 1184 sq. ft
 GLA FLOOR 2: 4432 sq. ft, excluded 290 sq. ft
 Total GLA 9462 sq. ft, total scanned area 10773 sq. ft

FLOOR PLAN CREATED BY CUBICASA APP. MEASUREMENTS DEEMED HIGHLY RELIABLE BUT NOT GUARANTEED.



Second Floor



Estimated areas

GLA FLOOR 1: 2997 sq. ft, excluded 1366 sq. ft
 Total GLA 2997 sq. ft, total scanned area 4363 sq. ft

FLOOR PLAN CREATED BY CUBICASA APP. MEASUREMENTS DEEMED HIGHLY RELIABLE BUT NOT GUARANTEED.



Lower Level



This Northeast PA home is conveniently located minutes from several universities, concert and sporting venues, state parks and shopping.

Land