

WINTER/SPRING JANUARY THROUGH MAY 2026

# City of LA VERNE

## RECREATION GUIDE



### HIGHLIGHTS:

- SENIOR CRAFT FAIR PAGE 21
- SIDEWALK COLORING CONTEST PAGE 14
- EGG-CELLENT ADVENTURE BACK COVER

# LA VERNE Police Department



## HOLIDAY SAFETY TIPS FROM THE LA VERNE POLICE DEPARTMENT

### Helping You Stay Safe This Season

The holidays in La Verne are filled with lights, laughter, and community spirit. As you prepare to celebrate, the La Verne Police Department encourages you to take a few extra precautions to ensure the season remains safe and joyful for you, your family, and your neighbors.

### Package Theft Prevention

Online shopping is convenient, but it also attracts “porch pirates.” Protect your deliveries by:

- Opting for in-store pickup or secure locker options.
- Scheduling deliveries for when you're home or having packages sent to a trusted neighbor.
- Installing a doorbell or security camera to deter theft.
- Picking up free warning decals available at our front lobby to discourage criminal activity.

**Pro tip:** Once gifts are unwrapped, avoid leaving large boxes from electronics or high-value items at the curb. Break them down and place them inside your recycling bin to avoid advertising what's inside your home.

### Shopping Safety

- Park in well-lit areas and keep car doors locked at all times.
- Avoid carrying large amounts of cash.
- Stay alert when walking to and from your vehicle—especially at night.
- Never leave valuables visible inside your car.

### Home Security While You're Away

- Use automatic timers to turn on lights and give the appearance of someone being home.
- Let a trusted neighbor know if you'll be out of town and ask them to watch over your property.
- Pause mail and package deliveries, or arrange for someone to collect them.

### Holiday Travel

- Always buckle up and never drive under the influence.
- Expect more traffic—plan ahead and allow extra travel time.
- If you're traveling long distances, share your route with a friend or family member.

### Decorating and Fire Safety

- Keep trees well-watered and away from heat sources.
- Never leave candles unattended, and consider switching to flameless options.
- Check all lights for frayed wires or broken bulbs before hanging them.

### Protecting Pets

- Keep decorations and certain holiday foods—like chocolate, grapes, and onions—out of reach.
- Make sure pets are safe indoors during fireworks or loud celebrations.

### Final Reminder

If you see something suspicious, report it. Together, we can help keep La Verne safe and festive for everyone.

From all of us at the La Verne Police Department, we wish you a safe, peaceful, and joyful holiday season.

For non-emergencies, call (909) 596-1913. In an emergency, always call 9-1-1

City of LA VERNE

WINTER  
SPRING  
2026



## CITY COUNCIL

Tim Hepburn	Mayor
Meshal “Kash” Kashifalghita	Mayor Pro Tem
Rick Crosby	Council Member
Steve Johnson	Council Member
Wendy Lau	Council Member

## CITY COUNCIL MEETS

First and third Mondays, 6:30 PM

## CITY HALL

3660 D Street, La Verne, CA 91750  
(909) 596-8726

### Hours:

Monday - Thursday 7:30 AM - 5:30 PM  
Closed Fridays

## COMMUNITY CENTER

3680 D Street, La Verne, CA 91750  
(909) 596-8776

### Hours:

Monday - Thursday 7:30 AM - 5:30 PM  
Friday 8:00 AM - 4:00 PM



*Get in touch with us!*

## CITY NUMBERS

ADMINISTRATION (City Council, elections, city records, mobile home rent control)	(909) 596-8726
BUILDING (Permits)	(909) 596-8713
BUSINESS LICENSE DEPARTMENT	(909) 596-8722
COMMUNITY DEVELOPMENT (Economic development, zoning, code enforcement)	(909) 596-8706
COMMUNITY CENTER	(909) 596-8776
CUSTOMER SERVICE (Water, sewage and trash billing, recycling)	(909) 596-8744
FINANCE DEPARTMENT (Fees, assessments, taxes, yard sale permits)	(909) 596-8716
FIRE DEPARTMENT (Fire prevention, disaster preparedness, weed abatement)	(909) 596-5991
PARKS & RECREATION DEPARTMENT (Seniors, park & facility rentals, and transportation)	(909) 596-8700
PUBLIC WORKS (City landscape, park maintenance, streets, traffic / street lights, sewer)	(909) 596-8741
POLICE DEPARTMENT	(909) 596-1913

## OTHER NUMBERS

BONITA UNIFIED SCHOOL DISTRICT	(909) 971-8200
FLOOD CONTROL (Los Angeles County)	(626) 458-5100
GRAFFITI HOTLINE	(909) 596-8787
HUMANE SOCIETY (Animal Control)	(909) 623-9777
POMONA VALLEY TRANSPORTATION AUTHORITY (PVTA)	(909) 596-7664
WASTE MANAGEMENT (Trash/Waste Disposal)	(909) 599-1274

## INCLUSION POLICY



The City of La Verne is committed to providing programs and services accessible to individuals with disabilities. Requests for special accommodations will be considered on a case-by-case basis.

Please contact the Parks & Recreation Office at (909) 596-8700 seven working days prior to the program start date.



## TABLE OF CONTENTS

<b>Community News</b> Residential • City • Economic	<b>4 - 10</b>
<b>Special Events</b>	<b>11 - 14</b>
<b>Community Services</b> Assistance • Programs • Information	<b>15</b>
<b>Excursions</b> Trips & Tours for Everyone	<b>16 - 17</b>
<b>Active Adults</b> Programs • Activities • Seminars • Events Meals • Classes • Clubs	<b>18 - 23</b>
<b>Inclusion</b> For People with ID/DD	<b>24 &amp; 25</b>
<b>Youth and Adult Classes</b>	<b>26 - 35</b>
<b>La Verne Preschool</b>	<b>36</b>
<b>Registration Information</b>	<b>37</b>
<b>City Facilities</b> Rental Information • Parks & Facilities Map	<b>38 &amp; 39</b>
<b>Egg-Cellent Adventure</b>	<b>40</b>



## SANDBAGS

During heavy rainfall, sandbags can provide an effective barrier to help divert water away from homes and buildings. When La Verne faces such weather, the La Verne Fire Department will open sandbag pick-up locations for residents, schools, and businesses at the following sites:

- Public Safety Facility, 2061 Third Street
- Fire Station 3, 5100 Esperanza Drive

Shovels and bags will be available at these locations. Since filling and loading sandbags is typically a two-person job, please bring someone to assist you. There is a limit of 10 sandbags per household or business. Please note that once sandbags are taken, they cannot be returned. We encourage you to only take the number of sandbags you truly need, based on the specific needs of your property.

We recommend following the La Verne Fire Department on social media to receive updates for when these sites will be activated.



## SCE PUBLIC SAFETY POWER SHUTOFFS

### What is a Public Safety Power Shutoff (PSPS)?

A Public Safety Power Shutoff (PSPS) occurs when Southern California Edison (SCE) temporarily turns off electricity in an area to help reduce the risk of wildfires sparked by utility equipment. These shutoffs are most often triggered by dangerous fire weather conditions such as strong winds, dry vegetation, and low humidity.

Being prepared is the best way to stay safe and minimize disruption during a power outage. SCE provides resources and preparation tips to help residents plan ahead for these situations. For a full list of safety and preparation recommendations, please visit: [sce.com/outages-safety/outage-preparedness](http://sce.com/outages-safety/outage-preparedness).



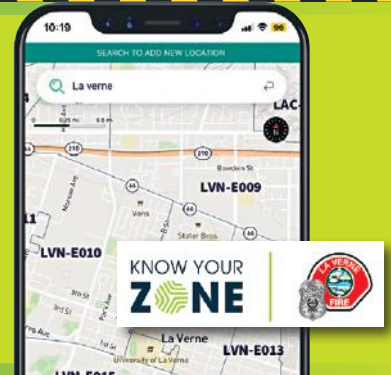
To check the status of a power outage in your neighborhood, visit the SCE Outage Center: [sce.com/psps](http://sce.com/psps)

## FIND YOUR ZONE

**BE PREPARED AND STAY CONNECTED!**

La Verne residents can now download Genasys Protect, the free emergency alert and evacuation app trusted by the La Verne Fire and Police Departments.

The app delivers real-time, location-based alerts for wildfires, earthquakes, severe weather, and other emergencies. You'll get evacuation instructions, road closure updates, interactive maps, turn-by-turn directions, and the option to set alerts for important places like your child's school or a family member's neighborhood. **DOWNLOAD IT TODAY!**



# STAY INFORMED ABOUT WHAT'S HAPPENING IN YOUR CITY!



## NIXLE ALERTS

Sign up for NIXLE alerts and notifications to stay aware of emergency updates and important public safety messages.

This free service keeps you connected and informed.



Simply visit [NIXLE.COM](http://NIXLE.COM) or the La Verne Police Department website at [lvpd.org](http://lvpd.org) to sign up now.

You can also text "91750" to 888777 for instant NIXLE updates.

# BUDGET INFORMATION

As La Verne continues to navigate tight financial conditions, the City remains guided by the City Council’s priority of fiscal sustainability, as identified during the strategic planning process. While the current budget is balanced, the City is experiencing rising costs that are outpacing revenue growth. These pressures mean we must look carefully at how to allocate limited resources while still preserving the high-quality services that residents enjoy and depend on.

In the coming months, the City will begin preparing the next fiscal year budget. This will be a thoughtful and deliberate process focused on balancing financial realities with community needs. There will be multiple opportunities for residents to participate and share feedback, beginning with a Strategic Planning Session in February and continuing with budget presentations to the City Council in May and June. These meetings are designed to give residents a voice in the process and ensure that the choices we make reflect the community’s priorities.

## Learn More About the City's Budgeting Process

See how your taxes are used to fund essential programs and services! Join us as we draft and finalize next year's budget covering July 1, 2026 through June 30, 2027. Learn more at [laverneca.gov/budgetprocess](http://laverneca.gov/budgetprocess)

### JAN/FEB

The Departments meet for a Budget Kickoff Meeting. Initial budgets for Capital Improvement Projects and Payroll Projections are submitted to Finance for review.

### MAR/APR

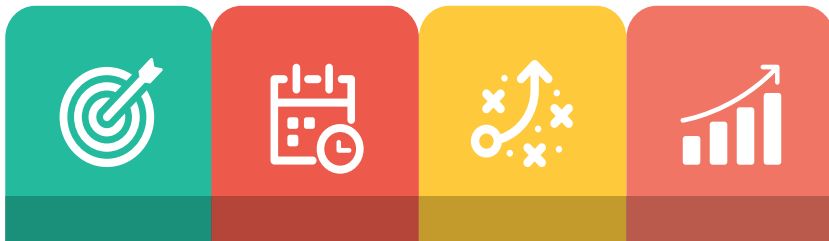
Preliminary department budgets are submitted to the City Manager and Finance Director for review and a tentative budget is finalized in April.

### MAY

The City presents a preliminary high-level overview of the budget with a detail CIP discussion during a City Council Study Session.

### JUNE

Departments present their budgets at the first June City Council Meeting. The City's Budget and Comprehensive Fee Schedules are presented to Council for adoption at the second June City Council meeting.



## STRATEGIC PLANNING



In early 2026, the City Council will kick off the annual Strategic Planning process. This effort is a collaborative process with the community and serves as the foundation for how La Verne addresses community needs in the years ahead. The Strategic Plan brings together guiding values, focused goals, and resident feedback to create an actionable roadmap, with supporting initiatives reviewed and updated each year as part of the City’s budget process.

One of the first steps in this process was the Community Survey, conducted in the Fall of 2025. The survey gave residents the opportunity to share their perspectives, ensuring the Strategic Plan reflects the priorities of the people who live and work in La Verne.

On Saturday, February 7, 2026, at City Hall, residents are invited to be part of the strategic planning session where City Council, staff, and residents will review survey results, engage with community feedback, and begin setting priorities that will guide upcoming budget decisions and long-term initiatives.

To learn more, please visit [laverneca.gov/strategicplan](http://laverneca.gov/strategicplan).



## CITY MANAGER NEWSLETTER



**STAY INFORMED WITH THE LATEST UPDATES FROM THE CITY OF LA VERNE!**

Our monthly City Manager Newsletter covers important city business, upcoming events, and regional news you won't want to miss.

Check out our archives at [laverneca.gov/cmnews](http://laverneca.gov/cmnews).

Want to subscribe?

Visit [laverneca.gov/notifyme](http://laverneca.gov/notifyme) or call (909) 596-8726.

# TRANSPORTATION

The Parks & Recreation Department offers transportation services to serve our residents' needs. Office hours are Monday through Thursday from 7:30 AM to 5:30 PM. For further information, please call (909) 596-8700.

### SUBSIDIZED PROGRAMS

To purchase these passes, residents must provide proof of La Verne residency in the form of a current utility bill AND proof of current employment from an agency located along the westward bus/train route. Quantities are limited and tickets will be sold on a first-come, first-served basis.

**FOOTHILL TRANSIT SUBSIDY** - Commuter Express bus line on TAP card. Foothill Transit passes may be purchased from the 25<sup>th</sup> of each month through the 10<sup>th</sup> of the following month.

**SENIOR BUS PASS PROGRAM** - The City offers a Senior Bus Pass Program for La Verne residents. Seniors, ages 62 or older, may purchase a Foothill Transit senior bus pass for a subsidized fee. Seniors need to provide proof of age as well as proof of La Verne residency in the form of a current utility bill. Senior passes may be purchased from the 25<sup>th</sup> of each month through the 10<sup>th</sup> of the following month.

**METROLINK SUBSIDY** - Monthly passes are available from the Pomona Station to destinations along the westward route. Metrolink passes may be purchased from the 20<sup>th</sup> of each month through the 10<sup>th</sup> of the following month. Once registered for the Metrolink Subsidy program with the Parks & Recreation Department, monthly passes may also be purchased online.

### METRO ACCESS

Metro Access is a curb-to-curb transportation service designed for people with disabilities who are unable to use traditional bus and train service such as the MTA or Foothill Transit services.

To apply, ask about current rates, or for more information, call Metro Access (800) 827-0829 or (800) 827-1359 for hearing impaired.



**We're here for you & YOUR PETS**  
Estamos aquí por usted y tus mascotas

**Low-Cost Veterinary Services**  
Servicios veterinarios de bajo costo

**Pet Adoptions**  
Adopciones de mascotas

**Pet Licensing**  
Licencias para mascotas

**Pet Support**  
Soporte para mascotas

500 Humane Way  
Pomona, CA 91766

(909) 623-9777  
(Hablamos español)

Office Hours:  
Monday - Saturday  
8:30 am - 5:30 pm

[www.ivhsspc.org](http://www.ivhsspc.org)



Inland Valley  
Humane Society  
& S.P.C.A.  
*A home away from home.*

## Landscape Lighting Maintenance District (LLMD)

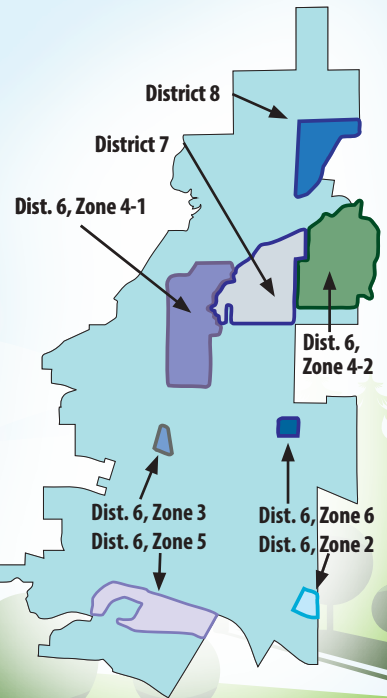
**Did you know?** Some La Verne neighborhoods are part of a Landscape Lighting Maintenance District (LLMD). These districts are created to maintain landscaping and ornamental features in public rights-of-way such as entryways, medians, parkways, and perimeter plantings that improve the look, safety, and value of the entire neighborhood.

**Why they exist:** LLMDs ensure that shared public landscaping continues to be cared for, keeping neighborhoods attractive and enhancing property values.

**How they are billed:** The costs appear as a special line item on your annual property tax bill. Unlike regular property taxes, the LLMD charge is based on the benefit received, and the funds can only be used within your district.

**How to know if you're in one:** Check your property tax bill. If you see an LLMD assessment, your home is within a district. You can also visit [laverneca.gov/llmd](http://laverneca.gov/llmd) to see if your property is included and to learn more.

### ASSESSMENT DISTRICTS



## Things to know for BULKY ITEM PICKUP

### RESIDENTIAL & MULTI-FAMILY

Waste Management will pickup bulky items up to 4 times a year at no cost. Call (909) 599-1274 to schedule bulky items.

### ITEMS PER PICK UP

Customers may put up to 4 bulky items for collection per pickup, call for details on specific items.

### ADDITIONAL PICKUPS AND ITEMS

Additional pickups and items are charged an additional fee.

## Christmas Tree Recycling

The first three collection days, following Christmas (Monday, December 29, January 5, and January 12), Waste Management will collect Christmas trees curbside for recycling.

Artificial trees, flocked trees, decorations (ornaments, tinsel, etc.), and stands cannot be recycled, and will not be included as part of this collection. And if your tree is over six feet tall, please cut it in half.



## New Contamination Procedures

SB 1383 requires cities to monitor solid waste containers to ensure proper sorting, as shown in the graphic below. Should the wrong materials end up in the wrong cart or bin at your home or business in La Verne, you will receive two notices before receiving a third notice with a contamination fine.

For more information, please call the Public Works Department (909) 596-8744, Waste Management (909) 599-1274 or visit the City of La Verne website, click on "Residents", "Environmental Programs", "Refuse/Waste Management" and scroll down to the "Residential" or "Commercial" section. Thank you for making La Verne a green community!



### What goes in the Organics / Recycling / Trash Cart?

#### What Goes in the Organics Cart:



FOOD WASTE & FOOD SOILED PAPER



YARD WASTE



#### DO NOT INCLUDE:

- NO LOOSE PLASTIC BAGS
- NO SERVEWARE/UTENSILS
- NO PLASTIC CONTAINERS
- NO FOAM CONTAINERS
- NO HAZARDOUS WASTE

Place organics materials directly into your organics cart - don't bag your organics materials.

#### What Goes in the Recycling Cart:



PLASTIC BOTTLES & CONTAINERS



FOOD & BEVERAGE CANS



GLASS BOTTLES & CONTAINERS



FOOD & BEVERAGE CARTONS



PAPER



FLATTENED CARD-BOARD & PAPERBOARD



#### DO NOT INCLUDE:

- NO LOOSE PLASTIC BAGS
- NO FOAM CONTAINERS
- NO CLOTHING, FURNITURE, CARPET
- NO HAZARDOUS WASTE

Place recyclables directly into your recycling cart - don't bag your recyclables.

#### What Goes in the Trash Cart:



GARDEN HOSE



BROKEN CERAMIC DISHES & POTS



CANDY, SNACK & FOOD WRAPPERS



CHIP BAGS



DIAPERS



FOAM CONTAINERS

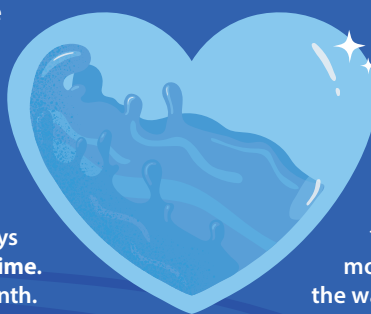


#### DO NOT INCLUDE:

- NO ORGANICS/RECYCLABLES
- NO HAZARDOUS WASTE
- NO ELECTRONICS
- NO BATTERIES, TIRES OR PAINT
- NO FLAMMABLE MATERIAL

## WATER SAVING TIPS

- Water your lawn only when it needs it. Step on your grass... if it springs back when you lift your foot, it doesn't need water. So set your sprinklers for less frequent watering... saves 750 to 1,500 gallons a month. Better yet, in times of drought, water with a hose.
- Fix all plumbing and irrigation leaks... saves about 20 gallons a day for each leak stopped.
- Don't run the hose while washing your car... use a bucket of water and a quick hose rinse at the end... saves 150 gallons each time. That's a significant amount of water if you wash your cars frequently.
- Run only full loads in the washing machine and dishwasher... saves 300 to 800 gallons a month.
- Use a broom instead of a hose to clean driveways and sidewalks... saves 150 gallons or more each time. At once a week, that's more than 600 gallons a month.
- Don't water the sidewalks, driveway, street, or the side of your house. Adjust sprinklers so the water lands on your lawn or garden - where it belongs... saves 500 gallons a month.
- Put a layer of mulch around trees and plants. Shredded leaves/bark, peat moss or gravel slows down evaporation... saves 750 to 1,500 gallons a month.
- If you have a pool, use a cover to cut down on evaporation... it will also keep the pool cleaner... saves 1,000 gallons a month.
- Water during the cool parts of the day. Early mornings are better than evenings since it will help prevent fungus and mildew growth... saves 300 gallons a month.
- Take your car to a car wash if you can... generally, most car washes filter and recycle a high percentage of the wash/rinse water which is very resource efficient.



For water savings tips and current rebate offers please visit [www.socalwatersmart.com](http://www.socalwatersmart.com), [www.bewaterwise.com](http://www.bewaterwise.com), [www.saveourwater.com](http://www.saveourwater.com)

The City of La Verne Parks & Recreation Department partners with the La Verne Police Department, Public Works Department, Fire Department, Tri-City, and L.A. CADA who proactively provide services to La Verne's unhoused population and residents while prioritizing the safety of the community. Together they are the L.E.A.P (La Verne Engagement Action Partners) team.

## MENTAL HEALTH AND UNHOUSED RESOURCES



### Services for Mental Health

SGV CARE is a multi-city regional collaboration providing mobile responses to 9-1-1 calls from residents experiencing mental or behavioral health emergencies. The SGV CARE Team consists of a clinician and substance use counselor. In addition to crisis de-escalation, the team also makes referrals to local area resources including coordination with medical, mental health, behavioral health services, and homeless services providers for unhoused or at-risk residents.

### Services for the Unhoused

- Phone – Call Tri-City Navigator at (888) 436-3246
- Email – Navigators [navigators@tricitymhs.org](mailto:navigators@tricitymhs.org)
- 24 Hour City Hall – Report Encampment
- Unhoused Veterans – (888) 507-2926
- Medical Emergency – Call 911

### Types of Calls That Get Flagged for SGV CARE:

#### Mental Health (Non-Violent)

- A person experiencing divorce, terminal illnesses, or in general need of a mental health assessment.
- Mental health support following a traumatic event.

#### Person in Distress

- Repeat callers who are requesting help, but not life threatening or violent.
- An elderly person who is disoriented.

#### Connection to Services

- Help with substance use disorders.
- Someone at risk of homelessness.

SGV CARE does not respond to calls with criminal activity, serious medical needs, or incomplete information.

**Services are available on the following days:  
Monday, Tuesday, Thursday, and Friday  
9:00 AM - 8:00 PM**

- Phone - Call SGV CARE at (909) 593-2531
- Email - SGV CARE Team [sgvcare@lacada.com](mailto:sgvcare@lacada.com)
- Medical Emergency - Call 911

### Mental Health Therapy

In partnership with CTRI, the City of La Verne offers Mental Health Therapy for residents aged 12 and up. Services include:

- In-person therapy sessions held at the La Verne Community Center on the fourth Thursday of each month between 12:00 PM and 5:00 PM (by appointment only).
- Up to 8 free sessions are available, funded by grants.
- Telehealth options are also provided for added convenience.

Therapy is conducted by master's-level therapists-in-training, supervised by licensed clinicians. Spanish speaking therapists are available. No insurance is required.

For more information or to schedule an appointment, contact CTRI at [wesupporthealth@ctris.org](mailto:wesupporthealth@ctris.org).

### Resources for Residents & Businesses

Homelessness in and of itself is not a crime, however the City of La Verne has developed resources so that residents and businesses are able to report issues and request assistance to address concerns on private property.

- Report Concerns: Email [LEAP@cityoflaverne.org](mailto:LEAP@cityoflaverne.org)
- Report Medical Emergencies or illegal activities: Call 911
- Report Trespassing on Private Business Property
  1. Post "No Trespassing" signs, which reference Penal Code § 602(o), at all entrances and exits at business location
  2. Submit completed Trespass Arrest Authorization Form to the La Verne Police Department in-person or by email
  3. Call non-emergency dispatch at (909) 593-2531 to report trespassing occurrences.
  4. Visit [www.laverneca.gov](http://www.laverneca.gov) or [lvpd.org](http://lvpd.org) for more information.

### Additional Resources

- Tri-City Mental Health Center ([www.tricitymha.ca.gov](http://www.tricitymha.ca.gov))
- Los Angeles Homeless Outreach Portal (LA-HOP) ([www.lahsa.org/portal/apps/la-hop/](http://www.lahsa.org/portal/apps/la-hop/))
- Veteran Peer Access Network (VPAN) – LA County ([www.jvs-socal.org/program/veteran-peer-access-network-sdistrict1/](http://www.jvs-socal.org/program/veteran-peer-access-network-sdistrict1/))
- Community Translational Research Institute (CTRI) ([ctris.org/#/CommunityResources](http://ctris.org/#/CommunityResources))

## WE WANT YOUR FEEDBACK

### STAY INFORMED

Let's make staying informed easier than ever!

The City of La Verne is exploring new ways to share news, events, and updates, and your input will guide the way. Take a few minutes to complete our outreach survey and help us create the future of community communication.

Visit [LaVerneCA.gov/OutreachSurvey](http://LaVerneCA.gov/OutreachSurvey) or scan the QR code to join in!



## OVERNIGHT PARKING PERMIT RENEWALS

Skip the Lines – Renew on Saturdays!

### Special Saturday Hours:

- December 13, 2025
- January 3, 2026
- January 24, 2026
- 9:00 AM – 1:00 PM



**Location:** La Verne Police Department, 2061 Third Street

Avoid long weekday waits! Our clerks will be dedicated to permit renewals and applications during these special Saturday sessions — making the process faster and easier for you.

**Bring vehicle registration, proof of residency, and payment.**



## THE La Verne HISTORICAL SOCIETY

The La Verne Historical Society (LVHS) purposes are to encourage and promote the study of the history and culture of La Verne and surrounding environs; to collect, classify, and disseminate historical information, data, and facts; and to locate, mark, and preserve historical places and structures worthy of recognition and perpetuation. Please contact us for more information.

(909) 596-4679

[lvhs@lavernehistoricalsociety.org](mailto:lvhs@lavernehistoricalsociety.org)  
[www.lavernehistoricalsociety.org](http://www.lavernehistoricalsociety.org)

## U.S. PASSPORT

U.S. Passport Services are available through appointment at the Parks & Recreation Department, 3660 "D" Street, La Verne

All applicants are required to be present and bring the following items:

1. Provide a COMPLETED new Passport Application (DS-11)
2. Submit Evidence of US Citizenship such as:
  - Certified Birth Certificate
  - Naturalization Certificate
3. Present your valid identification such as:
  - Valid California Driver's License
  - Current Military ID
  - Current Government ID (City, State, or Federal)
4. Paper form of payment such as check or money order (*Photo service is available for \$17 per person.*)



Appointments required. Please call (909) 596-8700 to schedule an appointment or for more information.

# Heritage Foundation Special Events

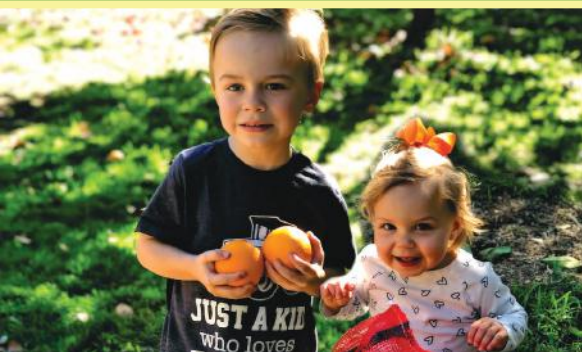


## LA VERNE HERITAGE FOUNDATION SPECIAL EVENTS

www.laverneheritage.org • (909) 593-2862 • admin@laverneheritage.org  
5001 Via de Mansion (North of 210 Freeway off of Wheeler & Via de Mansion)

### PICK YOUR OWN ORANGES

AT HERITAGE PARK  
SATURDAYS,  
FROM 9:00 AM TO 3:00 PM



Enjoy a "Slice of La Verne's Past" while picking some of the best tasting oranges around.

The Heritage Foundation offers you one of the last working orange groves in the area as a place to enjoy with your family.

Bags of oranges are \$6, and mesh bags and the picking poles are supplied.

The historic Weber House will also be open for tours from 10:00 AM to 12:00 PM.

Orange Picking opens Saturdays beginning January 10, 2026, and continuing as oranges are available.

For more information call (909) 593-2862 or check out our web site at [www.laverneheritage.org](http://www.laverneheritage.org).

### SPRING SQUEEZE

OFFERED THROUGHOUT THE WEEKS OF  
MARCH 9<sup>TH</sup> - APRIL 24<sup>TH</sup>  
FROM 9:00 AM TO 12:00 PM

The La Verne Heritage Foundation is presenting its fifteenth annual "Spring Orange Squeeze" at Heritage Park. We are reserving the morning hours on weekdays for preschool and elementary school children to come and experience a little bit of what life was like during the orange picking season in the late 1800's.

Our "Spring Squeeze" field trip at the Weber Ranch will feature a tour in the historic Weber House, a tractor ride through the orange grove, a demonstration of how the oranges were picked, the purpose of a smudge pot and the importance of a windmill. The children will also be able to taste fresh juice and will use an orange rind for planting a small flower to take home!

*If your group is interested in a tour, please call (909) 593-2862 or check out our web site at [www.laverneheritage.org](http://www.laverneheritage.org).*



### SPRING SQUEEZE VENDOR FAIRE

SATURDAY, MARCH 14<sup>TH</sup> FROM  
10:00 AM TO 3:00 PM

Join us for our 5<sup>th</sup> Annual Vendor Faire on Saturday, March 14<sup>th</sup>. Over 40 unique handmade and home-based business vendors to shop with for Easter, Mother's Day, or to spoil yourself! There will be food, music, tours of our historic Weber House and a tractor pulled wagon ride available for the event.

For more information call (909) 593-2862 or check out our web site at [www.laverneheritage.org](http://www.laverneheritage.org).





# Special Events



# Christmas Morning

Thursday, December 25, 2025  
starting at 7:00 AM

Keep your ears open for the sound of the sirens signifying that Santa is near on Thursday, December 25! Beginning at 7:00 AM, Santa will drive by the homes of La Verne to wish everyone a Merry Christmas.



To learn more about the event, please visit [www.laverneca.gov/christmasmorning](http://www.laverneca.gov/christmasmorning).

# COOL CRUISE

# CLASSIC CAR SHOW

**SATURDAY, APRIL 4, 2026**  
**10:00 AM TO 4:00 PM**

## OLD TOWN LA VERNE

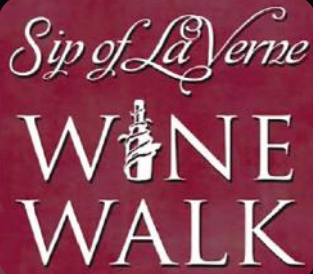
"D" and Third Streets, just south of Bonita Avenue

The always popular Cool Cruise classic car show kicks off the spring in Old Town La Verne with classic cars and classic rock music filling the streets of Old Town La Verne on Saturday, April 4<sup>th</sup> from 10:00 AM to 4:00 PM.

This is always the biggest event every year in Old Town. Car enthusiasts and young and old alike always have a great time at this event. The event is always the Saturday before Easter. Local live classic rock music is also a regular part of the Cool Cruise. You don't want to miss it!

For more information and registration please check out the website at [www.CoolCruiseCarShow.com](http://www.CoolCruiseCarShow.com) or contact Craig Hoelzel at (714) 671-5833 or La Verne City Hall at (909) 596-8706.

**FREE  
EVENT FOR  
ALL AGES!**



OLD TOWN LA VERNE; "D" and Third Streets,  
just south of Bonita Avenue.

ADMISSION Tickets available at  
[www.oldtownlaverne.com](http://www.oldtownlaverne.com)

**"A Sip of La Verne"**

**Old Town La Verne Annual Wine Walk.**

Merchants throughout offer wine tastings and local restaurant food offerings in beautiful Old Town La Verne, at Bonita Avenue and "D" Street. Live music throughout is part of the festivities. This event sells out early every year, so get your tickets early when they go on sale in March. For information, please email [oldtownlvinfo@gmail.com](mailto:oldtownlvinfo@gmail.com).



SATURDAY,  
**APRIL 18**

5:00 PM - 8:30 PM

ADULTS OVER 21 YEARS OF AGE



## CITY OF LA VERNE

# MEMORIAL DAY CEREMONY

JOIN US IN HONORING OUR VETERANS  
AT VETERANS HALL

1550 BONITA AVENUE, LA VERNE (CORNER OF BONITA & WHEELER)

MONDAY, MAY 25 – 11:00 AM

Our Veterans Memorial stands as a powerful tribute to the brave men and women who have served our country. To ensure it remains a place of honor and reflection, we are seeking donations for much-needed improvements. Your contribution will help us enhance the memorial's landscaping, add commemorative plaques and statues, and improve accessibility for all visitors. Together, we can preserve the dignity and beauty of this sacred space. Please consider making a donation to support our Veterans Memorial and honor those who have sacrificed so much for our freedom.

*For more information on making a donation and how you can contribute to the enhancement of our Veterans Memorial, please contact the Parks & Recreation Department at (909) 596-8700.*



# SIDEWALK COLORING CONTEST

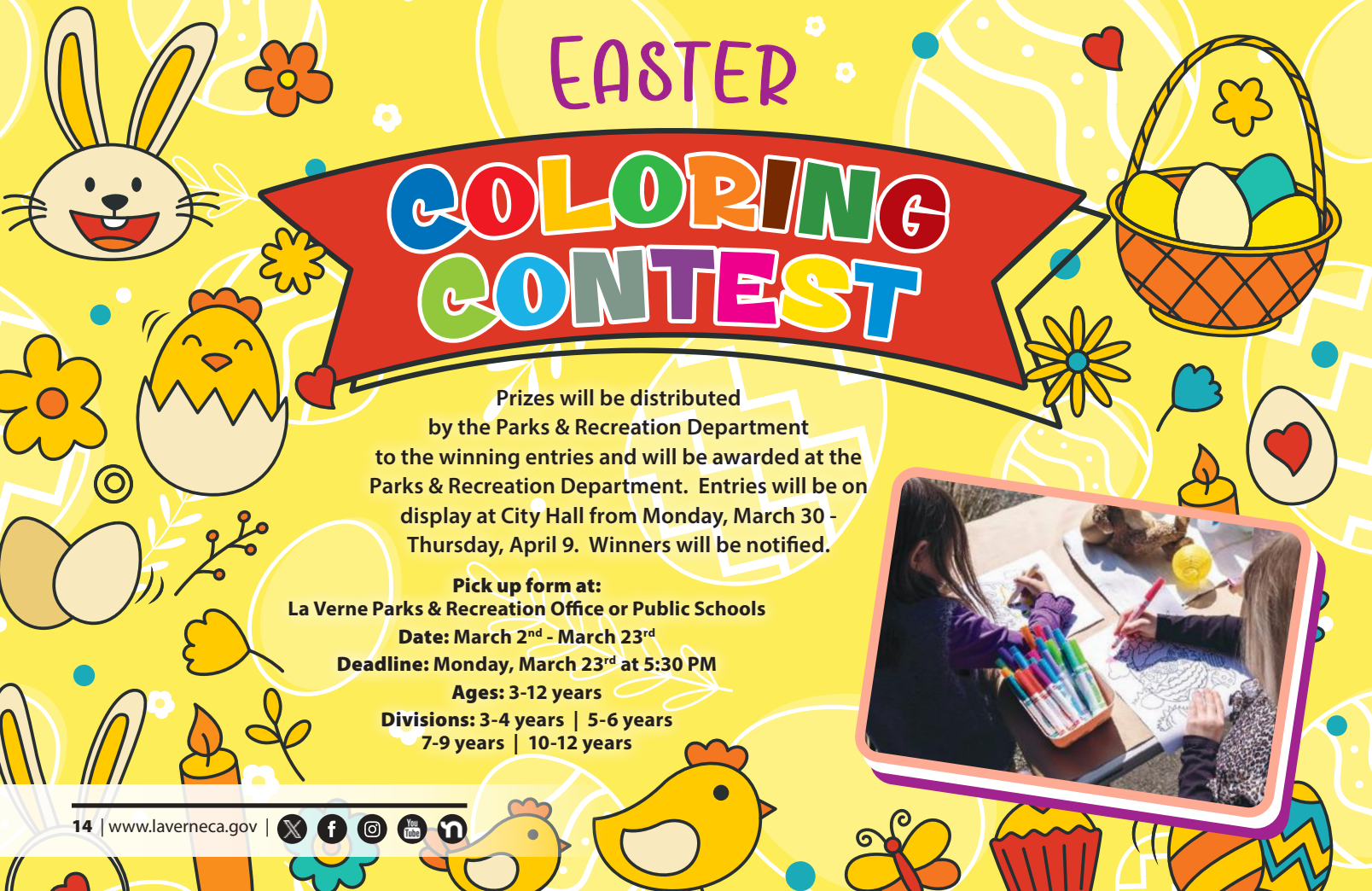
**Wednesday, April 1 | 9:30 AM | Ages 1-12 | Admission is FREE**

Children 1 to 12 years can display their creative talents in the Sidewalk Coloring Contest! Children will be drawing with chalk on their own sidewalk square. Prizes will be awarded to various age groups. Chalk is provided for all participants.

**PRE-REGISTER:** February 23 - March 31 at the Park & Recreation Office or by calling (909) 596-8700.

**LATE REGISTRATION:** Wednesday, April 1 from 9:00 AM to 9:25 AM at Mainiero Square (corner of Third and "D" Street).

**AWARDS** will be given at 10:00 AM - Mainiero Square.



## EASTER

# COLORING CONTEST

Prizes will be distributed by the Parks & Recreation Department to the winning entries and will be awarded at the Parks & Recreation Department. Entries will be on display at City Hall from Monday, March 30 - Thursday, April 9. Winners will be notified.

**Pick up form at:**  
La Verne Parks & Recreation Office or Public Schools

**Date:** March 2<sup>nd</sup> - March 23<sup>rd</sup>

**Deadline:** Monday, March 23<sup>rd</sup> at 5:30 PM

**Ages:** 3-12 years

**Divisions:** 3-4 years | 5-6 years  
7-9 years | 10-12 years





## HUNGER PROGRAM

The Pomona Inland Valley Council of Churches serves the twelve cities of the Pomona Valley. PIVCC is comprised of member churches working together with local businesses and volunteers to meet the needs of those less fortunate in our area. PIVCC operates three hunger sites (San Dimas, Pomona, and Ontario), which include a homeless shelter and a transitional housing program. **For more information, please phone (909) 622-3806.** PIVCC assists all people regardless of race, ethnicity, or religious affiliation.

## TRI-CITY MENTAL HEALTH CENTER

Tri-City Mental Health Center is a public mental health system agency serving the cities of La Verne, Claremont and Pomona to meet the mental health needs of their citizens. The agency provides high quality, culturally competent, behavioral healthcare treatment, prevention and education in its core cities and to surrounding communities. **Please call (909) 623-6131 for more information.**

## FAIR HOUSING FOUNDATION

Are you being “steered?” Being shown neighborhoods where most people are of the same race, color, or national origin as you, is called racial steering and is against the law. You have the right to live in any neighborhood you choose. If you suspect unfair housing practices, contact HUD or your local Fair Housing Center, a non-profit organization contracted by the City of La Verne to provide free services to residents Monday through Friday 8:00 AM to 5:00 PM at (310) 901-0808 or (800) 446-FAIR.

## TRI-CITY MHSA COMMUNITY NAVIGATORS

Are you in need of resources? MHSA Community Navigators can help!

- Community Navigators are Resource Specialists that provide linkage and referrals to community resources.
- Community Navigators service the cities of La Verne, Claremont, and Pomona.
- Anyone from the community can contact a Community Navigator if ever in need of resources.

**To contact a Community Navigator please call (888) 436-3246.**

## COMMUNITY TRANSITIONAL RESEARCH INSTITUTE

Community Transitional Research Institute is offering 8 free Mental health therapy sessions to individuals ages 12 and up. Inperson, Telehealth, and Spanish sessions are available. In-person sessions are available to La Verne residents at the La Verne Community Center every fourth Thursday of the month from 12:00 to 5:00 PM by appointment only. All sessions are provided by master's-level therapists-in-training supervised by licensed clinicians, with no insurance required. **For more information or to schedule an appointment, please email wesupporthealth@ctris.org.**



## YFAC YOUTH & FAMILY ACTION COMMITTEE PROGRAMS

The Youth & Family Action Committee is the focal point for citizen participation in La Verne's community oriented policing program fighting against drug and alcohol abuse, gang activity and other destructive behaviors. The committee is open to all interested citizens and organizations. **For more information, please email [astaff@laverneca.gov](mailto:astaff@laverneca.gov).**

## YOUTH COUNSELING

Counseling is available at Bonita High School, Ramona Middle School, Chaparral Continuation High School and all four elementary schools through licensed professionals.

## YOUTH SPORTS AND ACTIVITIES

One of the keys to preventing destructive behaviors among young people is to keep them involved and busy in community and/or school activities. **For information, call the Parks & Recreation Department at (909) 596-8700.**

## LA VERNE POLICE DEPARTMENT

A variety of prevention and intervention services for troubled youth are available. **Call (909) 596-1913.**

**VETERANS RESOURCE CENTER**  
AT THE LA VERNE COMMUNITY CENTER

A Veterans Service Officer will be onsite at the La Verne Community Center to provide assistance to veterans and their families in preparing and submitting claims, as well as representing claimants before the federal, state and local agencies providing veterans benefits.

**WALK-INS OR BY APPOINTMENT**  
SERVING VETERANS AND THEIR FAMILIES!  
**MONDAYS • 8:30 AM TO 4:30 PM**

FOR MORE INFORMATION OR TO SCHEDULE AN APPOINTMENT, PLEASE CALL **(909) 596-8776.**



## Excursions Information

January and February Excursion registration begins Monday, December 8.

Registration for remaining Excursions begins Monday, December 15.

If the minimum requirement of 25 participants is not met, the trip will be cancelled.

1. It is recommended that individual checks be sent for each activity. **If confirmation is desired, please send a self addressed, stamped envelope.**
2. Proof of age may be required. Participants 17 and under **MUST** be accompanied by an adult.
3. All trips leave from and return to the City Hall, 3660 D Street, and will go rain or shine. Participants must park on Durward Way.
4. Special services (i.e. wheelchairs) **MUST** be requested by ADA deadline 30-days before any trip.
5. Buses have lower compartments for wheelchairs/scooters, but participants must be able to get from the sidewalk into the bus up 3 stairs.
6. Please note levels of trips:
  - EASY**  
Little walking
  - MODERATE**  
Some walking necessary. Participants should be in good health.
  - ACTIVE**  
Good physical condition is necessary - lots of walking.
7. There is a \$15 cancellation fee for each trip and there are no refunds after the listed reservation/cancellation date.
8. Participants must be able to travel independently at all times.
9. Trip details subject to change.
10. Those registered for trips must adhere to new "Excursion Etiquette" code of conduct.



### RANCHO LOS ALAMITOS & SEAL BEACH (Moderate)

Join us for a visit to Rancho Los Alamitos, the "Ranch of the Little Cottonwoods," a Long Beach City Landmark that is twice listed on the National Register of Historic Places. The 7½-acre site features four acres of nationally significant historic gardens, a ranch house (1790–1933), and a restored

early 20<sup>th</sup>-century barnyard filled with friendly animals including horses, sheep, goats, chickens, and ducks. Enjoy a docent-guided tour of the historic ranch house, then explore the surrounding gardens, barns, and grounds at your own pace. Afterward, we will head to the Seal Beach Pier, where free time will be provided to dine, shop, and explore. Lunch is on your own.

**Reservations/Cancellations by: January 15**  
Fee: Resident: \$35 | Non-Resident: \$40

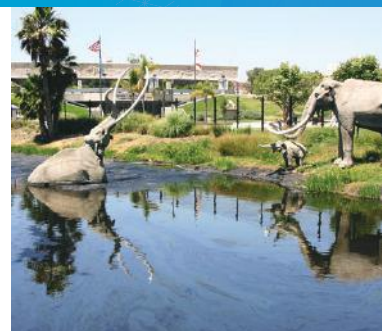
Code	Day	Date	Depart	Return	Age
151201-01	Fri	Jan 23	8:30 a.m.	4:00 p.m.	All ages

### FOSSILS & FUEL WITH CURT TUCKER (Moderate)

Discover the wonders of Los Angeles on this fascinating day trip featuring a visit to the La Brea Tar Pits and Page Museum, plus a behind-the-scenes Vault Tour at the Petersen Automotive Museum. Learn about prehistoric discoveries and classic cars from one of LA's most engaging guides, Curt Tucker. Enjoy lunch on your own at Andre's Italian Kitchen, a local favorite known for its delicious homemade dishes (not included). This educational and entertaining adventure combines science, history, and innovation—perfect for curious minds and classic car enthusiasts alike!

**Reservations/Cancellations by: January 5**  
Fee: Resident: \$125 | Non-Resident: \$130

Code	Day	Date	Depart	Return	Age
151202-01	Fri	Feb 6	8:30 a.m.	5:00 p.m.	All ages



### SOBOBA CASINO (Easy)

Try your luck and enjoy a day of fun at Soboba Casino Resort! With over 2,000 slot machines, 30 exciting table games, and progressive jackpots, there's something for every type of player. Experience nonstop gaming action in a lively and welcoming atmosphere. When it's time for a break, indulge in one of the resort's many dining options—from the upscale Canyons Steakhouse to the flavorful Asian Fusion restaurant or classic American Café. Lunch is on your own. Whether you're a seasoned gamer or just along for the thrill, Soboba Casino offers an unforgettable day of excitement and entertainment!

**Reservations/Cancellations by: February 12**  
Fee: Resident: \$30 | Non-Resident: \$35

Code	Day	Date	Depart	Return	Fee	Age
151203-01	Thur	Feb 19	9:00 a.m.	5:00 p.m.	\$30	21+

### GETTY VILLA AND MALIBU COUNTRY MART! (Easy)

Discover the beauty and history of the California coast with a visit to the Getty Villa and Malibu Country Mart! Explore the Getty Villa's stunning architecture, lush gardens, and fascinating collection of ancient Greek and Roman art overlooking the Pacific Ocean. Be sure to check the museum's website for current exhibitions and seasonal displays. Afterward, enjoy free time at Malibu Country Mart, a stylish open-air destination featuring boutique shops and a variety of restaurants. Savor lunch at one of Malibu's charming eateries or grab a coffee while taking in coastal charm! Lunch is on your own.

**Reservations/Cancellations by: February 20**  
Fee: Resident: \$30 | Non-Resident: \$35

Code	Day	Date	Depart	Return	Age
151204-01	Fri	Mar 6	8:00 a.m.	5:00 p.m.	All ages



# Active Adults - Excursions

## THE GROVE/FARMER'S MARKET & GRIFFITH OBSERVATORY

**(Moderate)**

Back by Popular Demand! Join us for a fun-filled day in Los Angeles, starting at the Grove/Farmer's Market, where you can shop, explore, and enjoy dinner on your own. With a wide variety of shops, sights, and delicious dining options, there's something for everyone! Afterward, we'll head to the iconic Griffith Observatory for an evening of stargazing and exploration. Don't miss the chance to experience the captivating Planetarium shows— tickets are available for purchase on the day of at the Observatory for \$8 for seniors and \$10 for adults. It's a must-see!

**Reservations/Cancellations by: March 5**

**Fee:** Resident: \$35 | Non-Resident: \$40

Code	Day	Date	Depart	Return	Fee	Age
151205-01	Thur	Mar 19	1:00 p.m.	10:00 p.m.	\$96	All ages

## RAMONA BOWL

**(Active)**

Join us for the 103<sup>rd</sup> season of Ramona, California's Official Outdoor Play! Held at the beautiful Ramona Bowl Amphitheatre in Hemet, this breathtaking production brings Helen Hunt Jackson's classic 1884 novel to life. Experience the romance, history, and drama of early California through dazzling performances featuring hundreds of actors, dancers, musicians, and horseback riders set against a stunning natural backdrop. Enjoy the Rancho Fiesta Package, which includes a delicious boxed lunch, drink, dessert, souvenir program, and seat cushion rental. Don't miss this unforgettable outdoor experience celebrating over a century of California tradition and storytelling!

**Reservations/Cancellations by: March 2**

**Fee:** Resident: \$75 | Non-Resident: \$80

Code	Day	Date	Depart	Return	Age
151208-01	Sat	April 18	12:00 p.m.	8:30 p.m.	All ages

## CATALINA ISLAND

**(Active)**

Join us for our most popular trip to beautiful Catalina Island! We'll drive to Long Beach and board the Catalina Express for a scenic one-hour cruise to the island. Enjoy indoor and outdoor seating, restroom facilities, and a snack bar on the way. Once you arrive, the day is yours to explore, with plenty of opportunities for shopping and dining at your leisure. Whether you want to relax on the beach or take in the local sights, there's something for everyone. After a fun-filled day, we'll return to Long Beach on the Catalina Express. Don't miss this unforgettable adventure! Date subject to change.

**Reservations/Cancellations by: April 16**

**Fee:** Resident: \$65 | Non-Resident: \$70

Code	Day	Date	Depart	Return	Fee	Age
151209-01	Sat	May 9	8:00 a.m.	8:30 p.m.	\$65	All ages

## SOUTH COAST BOTANICAL GARDEN & RIVIERA VILLAGE

**(Moderate)**

Discover the beauty of the South Coast Botanic Garden and the charm of Riviera Village! Spend the day surrounded by natural beauty and coastal charm as we visit two of the South Bay's most scenic destinations. Begin your adventure at the South Coast Botanic Garden, known as "The Jewel of the Peninsula." Explore 87 acres of lush landscapes featuring over 2,500 plant species, vibrant themed gardens, and a variety of birdlife. Be sure to check the Garden's website for current exhibits and seasonal displays that make each visit unique. Afterward, enjoy free time in Riviera Village in Redondo Beach—an inviting seaside community filled with boutique shops, galleries, and a wide array of dining options.

**Reservations/Cancellations by: April 20**

**Fee:** Resident: \$40 | Non-Resident: \$45

Code	Day	Date	Depart	Return	Age
151210-01	Fri	May 29	8:00 a.m.	4:30 p.m.	All ages



*Fun for the whole family!*

## SAN DIEGO SEAL TOUR... THE SEA AND LAND ADVENTURE

**(Easy)**

Climb aboard for an adventure on the exciting San Diego SEAL Tour! Perfect for families or anyone looking for a unique way to explore San Diego, this fully narrated adventure features a scenic drive through the city's picturesque streets before splashing down into San Diego Bay for a relaxing cruise. Along the way, you'll see famous landmarks such as the USS Midway, Seaport Village, and Shelter Island, while learning about the city's rich military and maritime history. Keep your eyes peeled for playful sea lions, seals, pelicans, and other marine life that call the bay home. Following the tour, enjoy free time in Seaport Village. Nestled along the scenic San Diego Bay, this family-friendly waterfront destination offers charming boutiques, local flavors, and plenty of opportunities to shop, dine, and explore. Lunch is on your own.

**Reservations/Cancellations by: March 2**

**Fee:** Resident: \$75 | Non-Resident: \$80

Code	Day	Date	Depart	Return	Age
151206-01	Thur	April 2	9:00 a.m.	7:00 p.m.	All ages





# Active Adults - Programs

## AGINGNEXT

141 Spring St., Claremont, CA 91711  
(909) 621-9900  
hello@agingnext.org  
www.agingnext.org

### AGINGNEXT VILLAGE

AgingNext Village is a group of older adults who have come together for the sole purpose of helping each other age at home happily, successfully, and with confidence.



When you join the Village, you immediately gain access to a whole new world filled with fun social outings, new friendships, educational speakers, local trips, book clubs, discussion groups and so much more. In addition, the Village also offers services such as rides, a handy-man, tech help, etc. **For more information call the AgingNext Village office (909) 621-9900 or visit www.agingnext.org.**

### RIDE & GO VOLUNTEER DRIVER PROGRAM

Ride and Go offers transportation services provided by volunteer drivers that enable seniors and the disabled to maintain their independence. This program allows riders to connect with a volunteer driver. Whether to the doctor, the grocery store, or lunch with friends, our volunteer drivers provide safe and reliable transportation to older adults and the disabled. Mileage Reimbursement and secondary auto insurance provided. This is an important service for older adults and the disabled who are unable to take public transportation but need a way to get medical and personal appointments. **For more information, or to be a volunteer driver, please call (909) 621-9900 or visit www.agingnext.org.**

### VOLUNTEERS

We are looking for volunteers 55+ who want to make a difference in their community. AgingNext volunteers help our clients thrive at home in many different ways. Delivering meals, providing transportation, helping at a local senior center or police department are just some of the ways our reliable, compassionate volunteers make a difference in our local communities every day. Contact us to become a volunteer. We'll match your skillset or desired activity to our client's needs so you can help seniors age with confidence. **Please call (909) 621-9900 or visit www.agingnext.org.**

### CARE PARTNERS

Care Partners are active seniors living on a fixed income that assist homebound seniors living in their own homes or provide respite to family caregivers. **Clients and Care Partners can get started with a phone call at (909) 621-9900.** Once approved, Care Partners and clients are matched based on a variety of factors. Care Partner volunteers and clients receive the rewards of a caring, supportive relationship. Volunteers receive a small stipend for their services and the client gets much needed assistance and support.

## GET ABOUT TRANSPORTATION

Dial-a-ride transportation for senior citizens and persons with disabilities servicing La Verne, San Dimas, Claremont, and Pomona. The Parks & Recreation Department has subsidized Get About booklets for \$22.50 for La Verne residents. Bring a current utility bill (for proof of residency), proof of age or disability, and your Get About Membership. **To register for the program call Community Senior Services at (909) 596-7664 (press "0" to register).**

### RIDES AVAILABLE

Monday-Friday 8:00 AM - 5:00 PM  
Saturday 8:00 AM - 2:00 PM  
Sundays Closed

### TO SCHEDULE A RIDE

Dispatch - (909) 596-5964  
(To make trip arrangements)



## HILLCREST BUS

Transportation services for all La Verne senior residents. The wheelchair accessible van's main pick-up and drop-off is in front of the flagpole located on the northwest corner of 7<sup>th</sup> Street and Mountain View Drive. Senior must be capable of traveling independently. There is no service on Saturday or Sunday and the cost is \$2 roundtrip. **Reservations are required by contacting Hillcrest Services at (909) 392-4325.**

## GAS PUMPING PROGRAM FOR SENIORS

The program is for those needing assistance with gas pumping, window washing, etc. If interested, please visit the La Verne Community Center, 3680 D Street, Monday through Thursday between 8:00 AM and 5:00 PM and pick up a free red placard that identifies you as in need of gas station assistance. Can be used at the participating gas stations:

La Verne Shell 2510 Foothill Boulevard (after 11:00 AM)  
J.R. Shell Service 1808 White Avenue  
Vons Gas 1600 Foothill Boulevard



## CARE COORDINATION

(Hospital Senior Care Network)  
Care coordinators assess seniors' needs and match them to the proper resources and services available. **Call (626) 397-3110 for further information.**

## FOSTER CARE PROGRAM HEROES WANTED

We're looking for animal lovers interested in being lifesaving HEROES to shelter animals in need. Our Foster Care Program allows vulnerable, underage animals the ability to thrive through your lifesaving efforts, helps nurse sick or injured animals back to being happy and healthy, helps provide us with valuable feedback to help place long-term shelter animals in a forever home, frees up space at the shelter for other lost or abandoned animals, provides invaluable experience to anyone considering the animal care or welfare fields, and is a great way to see if adopting a pet is right for you and your family. **Questions can be emailed to fosters@ivhsspc.org.**

## MOVIE MATINEE



Come and enjoy a **FREE** movie and light refreshments every **2<sup>nd</sup> Monday of each month at 12:30 PM.**

Located at La Verne Community Center 3680 D Street, La Verne, CA. Additionally, everyone in attendance is automatically entered into a raffle! Winners are announced at the end of each movie.

To find out what is playing or for more information, please call (909) 596-8776.

**\* Raffle included at the end of each movie! \***

### BINGO CALLERS

Our Bingo program is currently searching for additional bingo callers to announce the numbers during our Wednesday games. **If you are interested or want more information, please contact the Community Center at (909) 596-8776.**

### BINGO

La Verne Bingo is better than ever! Bingo is held every Wednesday from 1:15 PM to 4:00 PM at the Community Center. The selling of paper begins at 12:30 PM and ends promptly at 1:00 PM. It's \$6 for the first pack, \$4 for the second pack, and \$3 for each additional pack. It is \$1 to buy Power Ball. Payouts are as follows: 6 Special Games pay \$80 to \$140 each and 10 Regular Games pay \$60 each. Payouts depend upon attendance. There are four \$10 intermission prizes. A total of 10 Regular Games will be played plus the Specials. We have added a Power Ball to the Regular Games. If you win on the Power Ball your payout is increased by the amount at that time. Bring your daubers, as we don't play hard cards. Any person 18 years of age or older is welcome to play.

### SENIOR STRUTTERS

If you like to talk and make new friends, come join us Monday, Wednesday, and Friday at 7:00 AM SHARP. **Call Anna Diaz at (909) 730-3322 for more information.**

### FREE LEGAL CONSULTATION

Anna Valiente Gomez, attorney-at-law, will be available to answer questions for La Verne residents on an appointment basis from 1:30 to 3:30 PM on the 4<sup>th</sup> Friday of every month. **Appointments generally last around 20 minutes and can be scheduled with the Community Center at (909) 596-8776.** Appointments fill up very fast, so please make sure to call early. Appointments are subject to change.

### SENIOR CITIZENS ADVISORY COMMITTEE



**Every 3<sup>rd</sup> Wednesday of the month at 10:00 AM**  
*(No meetings held in July or December)*

The City Council of La Verne established the Senior Citizens Advisory Committee in October 1989. This Committee has been responsible for all of the senior activities, lunch program, many equipment upgrades and beautification projects at the Community Center. We encourage you to attend these public meetings and share your thoughts, ideas, and/or concerns.

**For more information on these meetings, please call (909) 596-8776.**

### TRAIL TREKKER HIKING PROGRAM

**Looking for fellow hikers or walkers!**

La Verne Trail Trekkers is a city sponsored program, free to join for residents and non-residents. We are a diverse group that offers hikes as often as 5 days a week, from the mountains to the city, the foothills to the beach. Our home base is beautiful Marshall Canyon where we meet every Monday at 8 AM. Friday is always at Puddingstone Lake. Wednesday and Saturday hikes rotate. We are adding Tuesday or Thursday excursions that explore the byways of Southern California. Our adventures usually conclude with coffee (at the Bagelry) or lunch nearby and interest in camping has led to trips to Mammoth, Anza Borrego, and the central coast.

**For information, contact Julie Cosgrove (jyfcos2@gmail.com) at (909) 592-7984 or find us on Facebook.**





*Special Event*

# Under the Blossoms Dinner Dance

**Sunday, May 3 4:00 PM - 7:00 PM**

**La Verne Community Center \$15 per person**

Dance, socialize, and have fun at our Under the Blossoms Senior Dinner Dance! Also, enjoy dinner and some wine throughout the night as well as entertainment!

Registration begins Monday, March 2<sup>nd</sup>.

To choose your assigned table, you must register at the Parks & Recreation Office, 3660 D Street, between the hours of 7:30 AM and 5:30 PM, Monday through Thursday.

Seating is limited, do not delay.



## SENIOR Seminar Series

Each month, come and learn about a new topic to expand your knowledge!

**When:** 10:30 AM on various Wednesdays and Fridays of the month.

**Where:** La Verne Community Center – 3680 D Street

Please RSVP to the Community Center at (909) 596-8776.

- January 7<sup>th</sup>** **Food for Thought**  
*Presented by YWCA*
- January 23<sup>rd</sup>** **Aging and Vision Loss**  
*Presented by Independence at Home*
- February 11<sup>th</sup>** **Living Better with Arthritis**  
*Presented by Independence at Home*
- March 4<sup>th</sup>** **TBA**  
*Presented by the YWCA*
- March 20<sup>th</sup>** **Stop Falling! Home and Safety and Preventing Falls and Injuries**  
*Presented by Independence at Home*
- April 22<sup>nd</sup>** **Maintain Your Brain**  
*Presented by Independence at Home*
- May 13<sup>th</sup>** **TBA**  
*Presented by the YWCA*

## SENIOR *Programs and Events*

*The \$1.00 fee goes towards sustaining the City of La Verne's senior programming.*

### ANTIQUÉ CLOCKWORK

Every Tuesday from 12:00 - 2:30 PM

Classes focus on the repair of antique, key wind clocks. First projects include the complete restoration of an 8-day time and strike movement. Following that, you are welcome to work on a more complicated clock. **Class is ongoing and all basic tools and supplies are provided.** A \$1.00 fee is required for participation.

### SENIOR SCRAPBOOKING

Last Tuesday of every month from 4:00 - 8:00 PM

Arrive to the program when you can – leave when you must! This group focuses on scrapbooking, online scrapbooking of ancestry & genealogy, and the occasional craft! No instruction or supplies provided for this social group. A \$1.00 fee is required for participation.

### WOOD CARVERS

Come join our Woodcarver's class every Tuesday from 6:00 - 8:00 PM

Participants learn essential carving techniques, tool safety, and various woodcarving styles while engaging in creative projects. Beyond skill-building, the class provides social interaction, fostering connections and camaraderie among peers. A \$1.00 fee is required for participation.

### SENIOR PINOCHLE

Every Monday from 10:00 AM - 2:00 PM

We will be happy to teach you Pinochle if you don't already know how. If that sounds better than watching TV, give us a visit. We meet each Monday from 10:00 AM to 2:00 PM. You don't have to be here at 10:00 AM. Come when you can, leave when you must. First person in makes the coffee. Most of our group takes advantage of the lunch program at the Center, or you can bring your own lunch. Come meet new people, guests are always welcome. It's a nice way to find out if it suits your style. Give us a try on Mondays. A \$1.00 fee is required for participation.

### INTERNATIONAL LINE DANCING

Every Thursday from 10:00 AM - 12:00 PM

Are you a senior who wants to learn line dancing routines to various genres of music or wants a fun workout? Come learn popular line dancing routines to everything from Western, Rock 'n Roll, Swing, Jive & Tango! Instructor Roger Hwang has over 20 years of experience in teaching line dancing! Come line dance, get exercise, improve coordination, and enhance your memory by practicing routines all in one class! A \$1.00 fee is required for participation.



### GENTLE YOGA FOR SENIORS

It is never too late to start yoga and improve your physical and emotional health! Yoga renews, invigorates, and heals the body by stretching and strengthening the muscles, joints and the spine. If done on a regular basis, it can arrest and even reverse the natural aging process. In this class classic Hatha yoga poses will be taught with modifications and utilizations of props, such as blocks and straps, so no unnecessary strain is put on the body. The 60-minute class is at a slower pace and more relaxed and focuses on deep breathing, gentle stretches and holding poses. Each session ends with a guided meditation practice. Please wear comfortable clothing, bring a mat and water to class.

**No Class: 2/5 and 5/7.**

**Location:** La Verne Community Center, 3680 D Street

Code	Ages	Dates	Day	Time	Fee
110807-05	50+	1/8 - 2/12	Th	8:15 AM - 9:15 AM	\$80
110807-06	50+	2/26 - 3/26	Th	8:15 AM - 9:15 AM	\$80
110807-07	50+	4/9 - 5/21	Th	8:15 AM - 9:15 AM	\$93

## Craft Fair

Saturday, April 11  
from 9:00 AM - 1:00 PM

La Verne Community Center

Join us at the La Verne Community Center for an exciting Craft Fair! This event offers a wonderful opportunity for seniors to showcase and sell their unique, handcrafted creations. Attendees can enjoy browsing a wide variety of items, perfect for gifts or personal enjoyment.

There is a **\$25 registration fee** for vendors, which directly contributes to our senior funds. The fair is a delightful gathering for both crafters and visitors, celebrating creativity and community.

For more information, please contact Armando Cisneros at the La Verne Community Center at (909) 596-8776.



### SENIOR CLUBS

DUPLICATE BRIDGE

Wednesday 12:15 PM - 4:00 PM





# Active Adults - Classes



## Winter / Spring Semester Classes

January - June

The following classes are being offered at the La Verne Community Center and provided by Mt. San Antonio College School of Continuing Education. For more information on Mt. San Antonio College classes, please call (909) 274-4192 or visit the college website at [www.mtsac.edu](http://www.mtsac.edu) or refer to the La Verne Senior Newsletter.

In observance of holidays classes won't be held on: January 19, February 13, March 31, and May 25.

**The following classes are held at the La Verne Community Center.**



### INTRODUCTION TO OFFICE CLOUD-BASED APPLICATIONS

Introduction to the fundamental features and functionalities of cloud-based productivity applications, focusing on Google Suite and Office 365 online versions. Students will be able to navigate and utilize these online resources to collaborate effectively.

Instructor	Day	Time	Dates
Vanessa Jones	T	9:25 AM - 12:15 PM	1/6 - 2/10

### BASIC COMPUTING LEVEL 3

Software application skills including creative projects which introduce computer graphics.

Instructor	Day	Time	Dates
Vanessa Jones	T	9:25 AM - 12:15 PM	2/24 - 4/14

### CREATIVE COMPUTING

Creative skills in utilizing graphic designs for projects such as business cards, letterhead, labels, flyers, posters, greeting cards, and computer-generated fabric designs.

Instructor	Day	Time	Dates
Vanessa Jones	T	9:25 AM - 12:15 PM	4/21 - 6/9

### DESKTOP PUBLISHING

Basic Desktop publishing to create and produce professional-looking publications.

Instructor	Day	Time	Dates
TBD	M	1:00 PM - 4:05 PM	1/5 - 2/9

### MOBILE INFORMATION TECHNOLOGY FOR THE BEGINNER

Introduction to mobile information technology for skills, concepts, and principles to safely and effectively use mobile platform devices and the internet.

Instructor	Day	Time	Dates
Vanessa Jones	F	12:50 PM - 3:55 PM	1/9 - 2/13
Vanessa Jones	F	12:50 PM - 3:55 PM	2/27 - 6/12

### MANAGING AND GROWING YOUR HOME-BASED BUSINESS

Managing day-to-day business activities to increase revenue and profitability to grow a home-based business.

Instructor	Day	Time	Dates
Rachel Jimenez	M	1:00 PM - 4:05 PM	4/20 - 6/8



### HEALTHY AGING (AEROBICS)

Healthy aging, including diet, nutrition, disease prevention, and application of physical fitness theories to maintain health while aging.

Instructor	Day	Time	Dates
Danelle Cole	T&TH	8:15 AM - 9:35 AM	1/6 - 2/12
Danelle Cole	T&TH	8:15 AM - 9:35 AM	2/24 - 6/11

### HEALTHY AGING - PRINCIPLES OF SLOW MOVEMENT (TAI CHI)

Healthy aging, including diet, nutrition, disease prevention, and application of Tai Chi principles maintain health while aging.

Instructor	Day	Time	Dates
Raea Figueroa-Darby	TH	1:00 PM - 2:50 PM	1/8 - 2/12
Raea Figueroa-Darby	TH	1:00 PM - 2:50 PM	2/26 - 6/11

### HEALTHY AGING - FALL PREVENTION: BALANCE AND MOBILITY

Addresses, particularly for older adults, the risks and fears associated with falling. Includes setting realistic goals, minimizing environmental risks and balance exercises.

Instructor	Day	Time	Dates
Yamil Slim	T&TH	1:30 PM - 2:20 PM	1/6 - 2/12
Yamil Slim	T&TH	1:30 PM - 2:20 PM	2/24 - 6/9

# Active Adults - Classes • Meals

## WATERCOLOR PAINTING

Principles of watercolor painting for the older adult population. Emphasis will be on creative expression to develop primary skills for watercolor as they relate to composition and technique.



Instructor	Day	Time	Dates
Kelly Conte	T	9:00 AM - 11:50 AM	1/6 - 2/10
Kelly Conte	T	9:00 AM - 11:50 AM	2/24 - 6/9
Sarah Cooper	F	12:45 PM - 3:50 PM	1/9 - 2/13
Sarah Cooper	F	12:45 PM - 3:50 PM	2/27 - 6/12

## DRAWING - BEGINNING THROUGH ADVANCED

Drawing while emphasizing the development of perceptual and technical skills. Students will advance their abilities in dry and fluid media while expanding their use of the formal elements and principles. The development of works of art will utilize observation of single objects, still life and landscape for representation and expression.

Instructor	Day	Time	Dates
Sarah Cooper	TH	8:55 AM - 12:00 PM	1/8 - 2/12
Sarah Cooper	TH	8:55 AM - 12:00 PM	2/26 - 6/11

## OIL PAINTING

Learn principles of drawing, design, color, and composition for oil painting, emphasizing creative skill development for the older adult population.

Instructor	Day	Time	Dates
Atilio Pernisco	F	9:00 AM - 11:50 AM	1/9 - 2/13
Atilio Pernisco	F	9:00 AM - 11:50 AM	2/27 - 6/12



## HOME GARDENING (REGENERATIVE GARDENING)

An introduction to local food communities as it applies to the personal or professional roles involved in sustaining the well-being of a community. This course introduces regenerative and sustainable gardening methods and practices, exploring how they help build resilient communities and address food access issues. Students will learn about local farms, markets, and organizations involved with food in their local community. Learn how to actively collaborate with local food producers to improve the quality of life for the community.

Instructor	Day	Time	Dates
Benjamin Brown	T	1:00 PM - 2:50 PM	1/6 - 2/10
Benjamin Brown	T	1:00 PM - 2:50 PM	2/24 - 6/9

## SEWING AND DESIGN

Course will present basic sewing techniques for mass production as well as one of a kind creations. Students will receive a supply list at the first class meeting. \*Quilting Emphasis

Instructor	Day	Time	Dates
Susan Stringfellow	M	12:30 PM - 3:35 PM	1/5 - 2/9
Susan Stringfellow	M	12:30 PM - 3:35 PM	2/23 - 6/8

## SEWING AND TAILORING 1

Patternmaking and garment fitting with flat pattern and draping methods, learned through process of creating a personal fitting form.

Instructor	Day	Time	Dates
Susan Stringfellow	W	9:00 AM - 11:35 AM	1/7 - 2/11
Susan Stringfellow	W	9:00 AM - 11:35 AM	2/25 - 6/10

## SEWING AND TAILORING 2

Haute couture garment construction, including couture tailoring techniques for inner structure, finishing, and achieving superior overall appearance.

Instructor	Day	Time	Dates
Susan Stringfellow	W	12:30 PM - 3:35 PM	1/7 - 2/11
Susan Stringfellow	W	12:30 PM - 3:35 PM	2/25 - 6/10

## ARTISAN QUILTING AND RETAIL SALES

Fundamental quilting techniques and essential skills to construct and complete artisan-quality quilts for retail sales.

Instructor	Day	Time	Dates
Susan Stringfellow	M	9:00 AM - 11:35 AM	1/5 - 2/9
Susan Stringfellow	M	9:00 AM - 11:35 AM	2/23 - 6/8

## IN-PERSON SENIOR LUNCH

**Congregate Meals take place Monday through Friday.**

Check-in will begin at 10:00 AM and meals will be served on a first-come, first-served basis. Anyone age 60 or over and their spouse, regardless of age, may attend the lunch program. All participants must be LA County residents. A suggested donation of \$3 is greatly appreciated to help offset the cost of the meals.

During your first visit you will be asked to complete a short in-take form that includes verification of age.

For more information, please call the Community Center at (909) 596-8776.

## MEALS ON WHEELS

Hot lunch delivered by a friendly volunteer to any eligible homebound resident in the San Dimas/La Verne area. Regular and diabetic menus are available.

Meals are delivered Monday through Friday between 12:00 PM - 1:00 PM and the cost is \$7.50 per meal.

For more information, please call the Meals on Wheels message line at (909) 596-1828.





# Inclusion FOR OUR ID/DD POPULATION



## WINTER/SPRING INCLUSION INFORMATION

**UNLESS OTHERWISE NOTED,  
ALL CLASSES HELD AT:  
COMMUNITY CENTER  
3680 D Street**

Inclusion for Residents with Intellectual/Developmental Disabilities in La Verne

### MISSION STATEMENT

Partner to provide full community inclusion for people with disabilities in all facets of community life.

### INCLUSION ADVISORY GROUP

The Inclusion Advisory Group, which was formed in 2004, meets to discuss ways to make sure people with disabilities are represented in community activities and to look for new ways to make current services more accessible. **If interested in sharing ideas and adding to our community, please call (909) 596-8776.**

## RESOURCES

Ability First	<a href="http://www.abilityfirst.org">www.abilityfirst.org</a>
ADD/ADHD	<a href="http://www.chadd.org">www.chadd.org</a>
Autism Society of Inland Empire	<a href="https://ieautism.org">https://ieautism.org</a>
Autism Speaks	<a href="http://www.autismspeaks.org">www.autismspeaks.org</a>
Epilepsy Foundation	<a href="http://www.epilepsy.com">www.epilepsy.com</a>
Facts about many disabilities	<a href="http://www.parentcenterhub.org">www.parentcenterhub.org</a>
Free Legal Advice	<a href="http://www.disabilityrightsca.org">www.disabilityrightsca.org</a>
Laws regarding special education	<a href="https://www.wrightslaw.com">https://www.wrightslaw.com</a>
National Alliance for the Mentally Ill	<a href="http://www.namicalifornia.org">www.namicalifornia.org</a>
National Organization for Rare Diseases	<a href="http://www.rarediseases.org">www.rarediseases.org</a>
San Gabriel/Pomona Regional Center	<a href="https://sgprc.org">https://sgprc.org</a>
Sensory Processing Disorder	<a href="http://www.spdfoundation.net">www.spdfoundation.net</a>
Special Olympics	<a href="https://sosc.org">https://sosc.org</a>
Support for Adults/ID/DD	<a href="https://scil-ilc.org">https://scil-ilc.org</a>
The Parents' Place Resource Center	<a href="http://www.parentsplacefrc.com">www.parentsplacefrc.com</a>

## DO YOU HAVE CONCERNS ABOUT YOUR CHILD'S DEVELOPMENT?



211 LA County can conduct a FREE developmental screening over the phone for children birth to five years of age to see how your child is learning, behaving, or growing for his or her age. Dial 2-1-1 and ask to get a developmental screening for your child. You will be connected to a 2-1-1 Care Coordinator who will interview you using a parent questionnaire and who will provide hands-on and follow-up assistance in connecting to needed intervention services in Los Angeles County. Call 2-1-1 or visit [www.211LA.org](http://www.211LA.org) for free help or information. It is available 24/7 and in all languages.

**For information on developmental milestones by age, visit <https://www.cdc.gov/act-early/milestones/>.**

## CAPTIONED THEATRE MOVIES AT REGAL CINEMAS, LA VERNE

Closed caption & descriptive audio at Edwards La Verne Stadium 12. Check Regal for show times. A great program for anyone with hearing loss! The following are the other participating theaters:

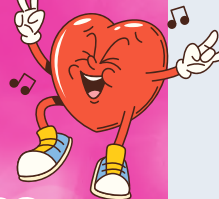
- AMC Ontario Mills 30** 4549 Mills Circle, Ontario
- AMC Covina 30** 1414 N. Azusa Avenue, Covina

## SPORTS - AYSO EPIC PROGRAM

**(American Youth Soccer Organization)**

The mission of the AYSO EPIC Program is to provide athletes with disabilities the additional support they need to fully participate in a quality soccer experience. Volunteer buddies help our athletes not only participate but excel in this wonderful program. The ultimate goal of the AYSO EPIC Program is to provide a holistic AYSO experience for players, families, and volunteers from team uniforms to playing on a team to cheering from the sidelines for all participants. **For more information please contact Tony Iacobacci at [rcayso112@gmail.com](mailto:rcayso112@gmail.com).**

# Sweethearts Dance



## For Those with Intellectual and Developmental Disabilities

Friday, February 13, 2026 | 5:00 - 8:00 PM

Tickets are \$8 pre-sale or \$10 at the door (cash only).  
La Verne Community Center (3680 D Street, La Verne)

Come join us for an evening of dancing, music, and fun! Participants ages 13+ can enjoy refreshments, lively music, themed decorations, and a chance to party with peers. All participants are required to fill out an activity form, which must be signed by participant or legal guardian.

Tickets will be available for pre-sale starting Tuesday, January 6 at the Parks & Recreation Office located in City Hall (3660 D Street). Parents/Guardians do not need to purchase a ticket.

*Please note that space is limited. Pre-registration is highly encouraged.*  
If you have further questions, please call (909) 596-8776.

## IMPACT PROGRAM

The IMPACT program is a broad-based, multi-disciplinary curriculum intended to meet the wide variety of educational needs presented by individuals with developmental disabilities. **IMPACT** = Independent living skills, Mobility training, Physical health and safety, Advocacy for self, College and career, and Technology training provided by Mt. San Antonio College. For more information on Mt. San Antonio classes, please call (909) 274-4192 or visit the college website at [www.mtsac.edu](http://www.mtsac.edu)

## INDEPENDENT LIVING SKILLS

### MONEY SKILLS

Basic money skills necessary for performing accurate money exchange. Including currency identification, values of currency, and basic currency counting.

Instructor	Day	Time	Dates
Jennifer Luu	W	9:00 AM – 11:50 AM	1/7 – 2/11
JoAnne Beltran	M	9:00 AM – 11:50 AM	2/23 – 6/8
Jennifer Luu	W	9:00 AM – 11:50 AM	2/25 – 6/10

### SELF DETERMINATION

Self-determination skills for students including personal responsibility, choices, and skills and limits.

Instructor	Day	Time	Dates
Laura Espinoza	M	9:00 AM – 11:50 AM	1/5 – 2/9

### RIGHTS & RESPONSIBILITIES IN THE WORKPLACE

Introduction to rights and responsibilities in a workforce setting for adults with disabilities. Overview of safe working environments, recognizing harassment, basic time management expectations, and importance of appropriate teamwork.

Instructor	Day	Time	Dates
Yasmin Cardona	F	9:00 AM – 11:50 AM	1/9 – 2/13
Yasmin Cardona	F	9:00 AM – 11:50 AM	2/27 – 6/12

For more information on Mt. San Antonio College classes please call (909) 274- 4192 or visit the college website at [www.mtsac.edu](http://www.mtsac.edu) or refer to the La Verne Senior Newsletter.

# AUTISM SPECTRUM ATHLETICS

Autism Spectrum Athletics (ASA) is committed to providing non-competitive seasonal sports programs. These programs are open to all children with Autism, Aspergers, Central Auditory Processing (CAPD), Attention Deficit Hyperactivity (ADHD/ADD), and other related disorders.

ASA utilizes traditional sports to develop sports knowledge, physical motor skills, independence, and socialization skills

ASA offers community-based socialization sports programs. Our programs are designed to be stress-free and non-competitive, with positive peer support.

All children are placed on teams based on age, function level, and abilities.

Visit our website at  
[autismspectrumathletics.org](http://autismspectrumathletics.org)  
or email us at

[autismspectrumathletics@yahoo.com](mailto:autismspectrumathletics@yahoo.com)  
for more information about our program.

# SPECIAL OLYMPICS SOUTHERN CALIFORNIA

Special Olympics Southern California has been changing lives through the power of sport for more than 40 years. Special Olympics offer opportunities for children (8 and older) and adults with intellectual disabilities to participate in year-round sports training and competition at no cost to the athlete.

Visit our web page at  
[www.sosc.org](http://www.sosc.org)

Call (909) 319-7693 or  
email [revans@sosc.org](mailto:revans@sosc.org) for  
more information about how to  
compete, volunteer, coach or donate.



## ADULT FITNESS

### YOGA AND MEDITATION

The Hatha Yoga practice benefits the entire body. It employs gentle warm up movements, standing stretches in flow style and longer/deeper holding postures standing or seated. The benefits of practicing yoga are numerous, including increased strength and flexibility, improved balance, posture, and stamina, and by reducing stress. Bring a yoga mat and water to class.

**No Class: 1/19, 2/3, 2/16, 3/30, and 5/4.**

**Location:** La Verne Community Center, 3680 D Street

Code	Ages	Dates	Day	Time	Fee
110807-01	18+	1/5 – 3/2	M*	6:15 PM – 7:15 PM	\$127
110807-02	18+	3/16 – 5/18	M*	6:15 PM – 7:15 PM	\$127

*\*Rescheduled Classes: Due to Holiday closures, the classes scheduled on 1/19 and 2/16 will be held on Tuesday 1/20 and 2/17.*

## DOG OBEDIENCE

### BASIC DOG OBEDIENCE AND PROBLEM SOLVING

We will cover basic obedience exercises (come, sit, stand, down, stay, leave it, and drop it), loose leash walking, boundary training for the front door and gates, and emergency recall and behavior problems (jumping, digging, biting, barking, chewing, housebreaking, and counter surfing.) Please wear enclosed shoes. No aggressive dogs towards people or dogs. If you have questions, please call the instructor, Cindi Neri at (909) 599-8844.



**Instructor:** Kelly's K-9 College

**Location:** Lutheran High School, 3960 Fruit Street, La Verne

Code	Ages	Dates	Days	Time	Fee
121001-01	18+	1/9 – 2/27	F	9:00 – 10:00 AM	\$320
121001-02	18+	2/3 – 3/24	T	6:00 – 7:00 PM	\$320
121001-03	18+	3/13 – 5/1	F	9:00 – 10:00 AM	\$320
121001-04	18+	4/7 – 5/26	T	6:00 – 7:00 PM	\$320
121001-05	18+	5/15 – 7/3	F	9:00 – 10:00 AM	\$320

## ADULT SPORTS

All participants must be registered prior to the deadline. Those not registered will not be allowed to participate.



### WOMEN'S 30+ THURSDAY NIGHT SOCCER LEAGUE

This is a recreational soccer league for the 30+ player intent on developing and maintaining skills, camaraderie and good health. A player must agree to play non-contact soccer. Experienced players are expected to participate as teachers and friends. Players will be assigned to a team for the 9 game season. Priority will be given to La Verne residents, beginning players, players returning from injuries, and returning league players. Please call if you are late registering so we can add you to our list. **Dates may be adjusted by weather/field conditions.**

#### Winter 2026 (Age: 30+)

**Registration:** December 15 – January 4  
**Register at:** Parks & Recreation, 3660 D Street  
**Code:** 120607-01  
**Location:** Sports Park, 3102 D Street  
**Games Begin:** January 8, 2026  
**Game Times:** 7:00 PM & 8:20 PM  
**Fee:** \$54/8 or 9 game session

#### Spring 2026 (Age: 30+)

**Registration:** February 17 – March 29  
**Register at:** Parks & Recreation, 3660 D Street  
**Code:** 120607-02  
**Age:** 30+  
**Location:** Sports Park, 3102 D Street  
**Games Begin:** April 2, 2026  
**Game Times:** 7:00 PM & 8:20 PM  
**Fee:** \$54/8 or 9 game session

### 5 ON 5 BASKETBALL (Age: 16+)

**Registration:** January 5 to February 18, or until league is full  
**Register at:** Parks & Recreation, 3660 D Street  
**Code:** 121602-01  
**Location:** Bonita High School Gym, 3102 D Street  
**Games Begin:** Sunday, February 22, & runs for 10-weeks of league play  
**Game Times:** 1:00 PM – 9:00 PM  
**Awards:** Individual awards and team trophy will be given out to the league champions and runners-up.  
**Fee:** \$325 per team plus a \$35 referee's fee paid before each game at the gym.

## COMMUNITY SPORTS INFORMATION

### LA VERNE/SAN DIMAS AYSO

The La Verne/San Dimas region of the American Youth Soccer Organization (AYSO) is open to all boys and girls between the ages of 5 to 18. For further information, visit our website [www.AYSO112.org](http://www.AYSO112.org).

### LA VERNE LITTLE LEAGUE BASEBALL

This is a great opportunity for children ages 5-14 (as of April 30) to learn teamwork and sportsmanship, as well as develop their baseball skills. For more information, applications, or updates, please visit La Verne Little Leagues web site at [www.lavernelittleleague.com](http://www.lavernelittleleague.com).

### LA VERNE GIRLS' SOFTBALL ASSOCIATION

Softball for girls ages 4½ through 14 years. Please visit our website at [www.lvgsa.com](http://www.lvgsa.com) for up-to-date information.

### LA VERNE/SAN DIMAS POP WARNER YOUTH FOOTBALL & CHEERLEADING

Youth tackle football and cheer program for boys and girls age 7 through 15. For further information visit our website at [www.LVSDpopwarner.org](http://www.LVSDpopwarner.org).

### LA VERNE LAZERS SOCCER CLUB

A competitive soccer club for boys and girls ages 9 to 17. If interested or for more information, please visit our website at [lazerssc.org](http://lazerssc.org).

### LA VERNE TENNIS ASSOCIATION

This Association is designed for intermediates and advanced players to promote regular tennis play between members with the same abilities. We meet every Saturday at Bonita High School at 8:00 AM and play 3 full sets with rotation of partners on the courts. An annual membership fee of \$55 that covers the tennis balls that we supply for each match. Applications are accepted throughout the year for adults 18 and over.

For further information contact Robin Carder at (909) 593-6285.

## SUMMER YOUTH BASKETBALL

The La Verne Youth Basketball Program is an organized basketball league with approximately nine children per team. Both BOYS and GIRLS are instructed in the fundamentals of basketball in an atmosphere of sportsmanship and fair play. Teams are coached by volunteers.

**Code / Ages:** 111603-A Div A: Players going into 7<sup>th</sup> & 8<sup>th</sup> grade  
**Code / Ages:** 111603-B Div B: Players going into 5<sup>th</sup> or 6<sup>th</sup> grade  
**Code / Ages:** 111603-C Div C: Players going into 3<sup>rd</sup> or 4<sup>th</sup> grade  
**Fee:** \$110 per child, \$95 for additional child in immediate family  
**Registration:** March 16 until leagues are filled or through April 30, whichever occurs first

**Register at:** Parks & Recreation Office, 3660 D Street  
**Games:** Saturdays, June 6 - July 18  
**Practices:** Times and locations set up by coach  
**Draft Times:** Saturday, May 16 at Bonita High School Gym  
 Div C: 9:00 AM, Div B: 10:30 AM, and Div A: 12:00 PM

All teams are coached by volunteers. Please contact the Parks & Recreation office for more information.

## ANNUAL YOUTH TRACK & FIELD MEET

Track teams representing La Verne Heights, Grace Miller, Roynon, Oak Mesa, and Ramona Middle School will be invited to participate. First and second place winners will represent La Verne in the San Gabriel Valley Championships. For more information on how to participate on a school team, contact the Parks & Recreation Department or the school physical education teachers.

**Register:** Through school P.E. teachers  
**Date:** April 11, 2026  
**Location:** Bonita High School  
**Ages:** Boys and Girls born 2008-2014  
**Fee:** Free  
**Awards:** Medals for 1<sup>st</sup> place, ribbons for 2<sup>nd</sup> through 5<sup>th</sup>

## SUMMER T-BALL

Children will participate in a non-competitive instructional league. Both BOYS and GIRLS are coached in the fundamentals of T-ball by volunteer coaches. Each participant will receive a team shirt and hat. Gloves must be provided by the participant.



**Code:** 211606-01  
**Ages:** 4, 5, and 6 year olds  
**Fee:** \$105 per child, \$90 for each additional child in immediate family  
**Registration:** March 16 until leagues are filled, or through April 30, whichever occurs first  
**Register at:** Parks & Recreation Office, 3660 D Street  
**Games:** Saturdays between 8:00 AM and 10:00 AM, from June 6 through July 19 at Roynon Elementary School  
**Practices and Locations:** Held at schools once a week. Times set up by individual coaches  
**Awards:** Each child will receive a participation award at the last game.

All teams are coached by volunteers. Please contact the Parks & Recreation office for more information.



# BASKETBALL FUNDAMENTALS

## YOUTH EVOLUTION BASKETBALL CLASSES



**Location:** Lowell Brandt Park • 7201 Stephens Ranch Road, La Verne  
**No Class:** 4/3.

### Baby Ballers

Introduce your child to the best sport on the planet. With your participation and encouragement, the baby baller will learn the fundamental steps necessary to understand the sport of basketball. Instructor guidance and movement skills are developed using engaging games and activities with appropriately sized basketball hoops, providing an unforgettable experience like no other.

Code	Age	Dates	Days	Time	Fee
110302-01	3 – 4	3/13 – 4/10	F	6:00 PM – 6:30 PM	\$99
110302-08	3 – 4	4/24 – 5/15	F	6:00 PM – 6:30 PM	\$99

### Level 1

Learn fundamental movement skills and build overall motor skills. This course is designed for children to learn the fundamental concepts of basketball. The program focuses on technique through the use of activities that subsequently help build on each other, helping the children to gradually increase their ability to do the basic skills to help them play the sport of basketball.

Code	Age	Dates	Days	Time	Fee
110302-02	4 – 5	1/23 – 2/13	F	4:45 PM – 5:20 PM	\$99
110302-05	4 – 5	3/13 – 4/10	F	5:20 PM – 5:55 PM	\$99
110302-09	4 – 5	4/24 – 5/15	F	5:20 PM – 5:55 PM	\$99

### Level 2

This course will focus on dribbling, passing, shot technique and teamwork. Adjustable hoops and appropriately sized basketballs are used to always provide the right amount of challenge. The children will soon explore the sport of basketball with a variety of activities and games the program has in play.

Code	Age	Dates	Days	Time	Fee
110302-03	5 – 7	1/23 – 2/13	F	3:55 PM – 4:40 PM	\$99
110302-06	5 – 7	3/13 – 4/10	F	4:30 PM – 5:15 PM	\$99
110302-10	5 – 7	4/24 – 5/15	F	4:30 PM – 5:15 PM	\$99

### Level 3

Aimed to improve large motor skills, spatial awareness, and teamwork. The instructor will focus on agility, drills become a bit more advanced, and teach children how to perform under pressure of the clock and their opponents. Drills are focused on more complex activities that include fast breaks, coordinated offensive play, and multiple defensive structures. Your child will now learn explosive plays, improve their footwork, and develop their range and accuracy of shooting.

Code	Age	Dates	Days	Time	Fee
110302-04	8 – 11	1/23 – 2/13	F	3:10 PM – 3:55 PM	\$99
110302-07	8 – 11	3/13 – 4/10	F	3:45 PM – 4:30 PM	\$99
110302-11	8 – 11	4/24 – 5/15	F	3:45 PM – 4:30 PM	\$99



## Spring Break Camp

Using our progressive curriculum and focusing on the whole player, this one-week basketball camp will teach your child the skills they need both on and off the court. Our coaches will focus on respect, teamwork, and responsibility. We will start each day with a 'skill of the day' and progress to drills and games, making this an unforgettable camp experience for your young athlete.

**Level 2:** This class will focus on dribbling, passing, shot techniques and teamwork. Adjustable hoops and appropriately sized basketballs are used to provide just the right amount of challenge.

**Level 3:** This class is designed to improve large motor skills, spatial awareness, and teamwork with more focus on agility. At this level, drills become a bit more advanced and are designed to teach children how to perform under pressure from the clock and from their opponents.

### Level 2

Code	Age	Dates	Days	Time	Fee
110302-12	5 – 7	3/30 – 4/3	M-F	9:00 AM – 12:00 PM	\$170

### Level 3

Code	Age	Dates	Days	Time	Fee
110302-13	8 – 11	3/30 – 4/3	M-F	9:00 AM – 12:00 PM	\$170

## KIDZ LOVE SOCCER

**Instructor:** Kidz Love Soccer

**Location:** Las Flores Park, 3175 Bolling Avenue



### MOMMY/DADDY & ME

The fun happens on the field, so don't just watch from the sidelines! Here is your chance to join in your toddler's introduction to the world's most popular sport. You'll participate in fun, age-appropriate activities, and help your child to develop their motor and socialization skills. A variety of soccer activities are played each week. All participants receive a Kidz Love Soccer jersey! Adult participation is required.

Code	Ages	Dates	Day	Time	Fee
111615-01	2 – 3 ½	2/12 – 3/19	Th	5:15 PM – 5:45 PM	\$163
111615-02	2 – 3 ½	4/9 – 5/14	Th	6:10 PM – 6:40 PM	\$163

### TOT SOCCER

Chase the ball! Tot-Soccer helps kids learn to be part of a structured group activity without a parent by their side. Realizing this can be difficult for young children, our field-tested, age specific curriculum builds confidence and promotes physical development in a safe, supportive and fun environment. Tot Soccer focuses on helping kids develop their large motor skills through skill demonstrations and entertaining games like Bugs in the House! These games build skill and self-esteem and prepare tots to start running and kicking - just like the big kids! All participants receive a Kidz Love Soccer jersey! Shin guards are required.

Code	Ages	Dates	Day	Time	Fee
111615-03	3 ½ – 4	2/12 – 3/19	Th	4:40 PM – 5:10 PM	\$163
111615-04	3 ½ – 4	4/9 – 5/14	Th	5:35 PM – 6:05 PM	\$163

### PRE SOCCER

Enjoy running and kicking just like the big kids! Have fun and learn the basic techniques of soccer while building self-esteem and learning to follow instructions in a nurturing teaching environment. The focus will be more on skills and individual development as a result of the current accommodations. Shin guards are required after the first meeting. All participants receive a Kidz Love Soccer jersey!

Code	Ages	Dates	Day	Time	Fee
111615-05	4 – 5	2/12 – 3/19	Th	3:10 PM – 3:45 PM	\$163
111615-06	4 – 5	4/9 – 5/14	Th	4:55 PM – 5:30 PM	\$163

### SOCCER 1

Players will learn dribbling, passing, defense and shooting goals! Fun skill games are played at every session and every participant will have a ball at their feet. Small-sided soccer matches will be introduced gradually. Perfect for first time players while being fun and engaging for kids with some experience. All participants receive a Kidz Love Soccer jersey! Shin guards are required after the first class.

Code	Ages	Dates	Day	Time	Fee
111615-07	5 – 6	2/12 – 3/19	Th	3:50 PM – 4:35 PM	\$163
111615-08	5 – 6	4/9 – 5/14	Th	4:05 PM – 4:50 PM	\$163

### SOCCER 2

A great introduction to competitive soccer. Skillz and Scrimmages teaches advanced skill building such as dribbling, passing and shooting in a team format, as well as an introduction to goal-tending. Kids will scrimmage and learn to play together as a team. From defense and mid-field to forward and goalie, kids get exposure to playing every position and have a blast doing it! All participants receive a Kidz Love Soccer jersey! Shin guards are required.

Code	Ages	Dates	Day	Time	Fee
111615-09	7 – 10	4/9 – 5/14	Th	3:15 PM – 4:00 PM	\$163

## MUSIC

**Instructor:** Cid & Carmelita Bermeo

**Location:** La Verne Community Center, 3680 D Street

### PRIVATE PIANO CLASSES

One on one piano lessons for beginners to intermediate levels. Focus on learning how to read notes as well as studying songs that everyone loves. Our goal is for students to love music! Lessons are for 30 minutes each.

Code	Ages	Dates	Days	Time	Fee
110309-01	5+	1/26 – 3/23	M	2:00 – 5:00 PM	\$255
110309-02	5+	3/30 – 5/18	M	2:00 – 5:00 PM	\$255

\* No class on 2/16.

## ART



**Instructor:** Young Rembrandts

**Location:** La Verne Community Center

Curriculum meets California State Standards for the Visual Arts.

### ELEMENTARY & CARTOON DRAWING

This class combines our essential basics of drawing and our humorous cartoon curriculum. Students will improve drawing skills, understanding of concepts, and increase art vocabulary as well as create silly characters and story sequences that tell jokes!

Code	Ages	Dates	Days	Time	Fee
111703-01	6 – 12	2/5 – 3/12	Th	5:00 – 5:55 PM	\$105
111703-02	6 – 12	4/9 – 5/14	Th	5:00 – 5:55 PM	\$105



## GYMNASTICS

Location: Veterans Hall, 1550 Bonita Avenue

### TUMBLE BEARS

Students will learn body positions, hand-eye coordination, gross motor skills, increase flexibility, agility and basic gymnastic skills such as forward/side/backward rolls, jumping and balancing. Students will use tumbling mats, balance beam, bars, and much more. Due to the young age of this class, parent participation required.

Code	Age	Dates	Days	Time	Fee
110101-B1	2-3	1/6-2/10	T	1:00-1:45 PM	\$130
110101-B2	2-3	1/8-2/12	Th	1:00-1:45 PM	\$130
110101-B3	2-3	2/24-3/31	T	1:00-1:45 PM	\$130
110101-B4	2-3	2/26-4/2	Th	1:00-1:45 PM	\$130
110101-B5	2-3	4/14-5/19	T	1:00-1:45 PM	\$130
110101-B6	2-3	4/16-5/21	Th	1:00-1:45 PM	\$130

### KIDDIE GYMNASTICS

Students will begin learning skills with more self-confidence and balance while increasing flexibility and coordination. Skills will include working with uneven parallel bars, low and high balance beam, handstand holds, cartwheels, forward and backward rolls to stand up, jumping on/off blocks onto safety mats and much more.

Code	Age	Dates	Days	Time	Fee
110102-T1	4-5	1/6-2/10	T	2:00-2:45 PM	\$130
110102-H1	4-5	1/8-2/12	Th	2:00-2:45 PM	\$130
110102-T2	4-5	2/24-3/31	T	2:00-2:45 PM	\$130
110102-H2	4-5	2/26-4/2	Th	2:00-2:45 PM	\$130
110102-T3	4-5	4/14-5/19	T	2:00-2:45 PM	\$130
110102-H3	4-5	4/16-5/21	Th	2:00-2:45 PM	\$130



### BEGINNING GYMNASTICS

Students will be introduced to a wide variety of gymnastic and tumbling moves including balance beam, mini-trampoline, bars, and vault. Handstands, bridges and cartwheels will be taught along with improving the strength, coordination and flexibility of the student.

Code	Age	Dates	Days	Time	Fee
110103-T1	6-15	1/6-2/10	T	3:00-3:45 PM	\$130
110103-T2	6-15	1/6-2/10	T	4:00-4:45 PM	\$130
110103-H1	6-15	1/8-2/12	Th	3:00-3:45 PM	\$130
110103-H2	6-15	1/8-2/12	Th	4:00-4:45 PM	\$130
110103-T3	6-15	2/24-3/31	T	3:00-3:45 PM	\$130
110103-T4	6-15	2/24-3/31	T	4:00-4:45 PM	\$130
110103-H3	6-15	2/26-4/2	Th	3:00-3:45 PM	\$130
110103-H4	6-15	2/26-4/2	Th	4:00-4:45 PM	\$130
110103-T5	6-15	4/14-5/19	T	3:00-3:45 PM	\$130
110103-T6	6-15	4/14-5/19	T	4:00-4:45 PM	\$130
110103-H5	6-15	4/16-5/21	Th	3:00-3:45 PM	\$130
110103-H6	6-15	4/16-5/21	Th	4:00-4:45 PM	\$130



## INTERMEDIATE GYMNASTICS

Class requires passing specific skills and coach's approval.

Class is designed for students who can independently perform all the skills in Beginning Gymnastics. Students will begin to learn bridge kick over, limber downs, power hurdle cartwheels, dive roll on vault, chin up pull over and cast toe on dismount on bars, tuck jumps and leaps on beam.

Code	Age	Dates	Days	Time	Fee
110104-I1	6-15	1/6-2/10	T	5:00-5:45 PM	\$130
110104-I2	6-15	1/8-2/12	Th	5:00-5:45 PM	\$130
110104-I3	6-15	2/24-3/31	T	5:00-5:45 PM	\$130
110104-I4	6-15	2/26-4/2	Th	5:00-5:45 PM	\$130
110104-I5	6-15	4/14-5/19	T	5:00-5:45 PM	\$130
110104-I6	6-15	4/16-5/21	Th	5:00-5:45 PM	\$130

### BEGINNING/INTERMEDIATE TUMBLING

Class requires passing specific skills and coach's approval.

This class will teach all tumbling skills; great for Cheerleading and Martial Arts students. Classes will include warm-up exercises, strength training and flexibly. Equipment such as mini-trampoline, wedge mats, landing mats and spotting blocks will be used. Other tumbling skills such as front/back kick-over, front/back handsprings, etc. will be taught to students who the instructor feels is ready to move onto more challenging skills.

Code	Age	Dates	Days	Time	Fee
110105-T1	6-15	1/6-2/10	T	6:00-6:45 PM	\$130
110105-T2	6-15	1/8-2/12	Th	6:00-6:45 PM	\$130
110105-T3	6-15	2/24-3/31	T	6:00-6:45 PM	\$130
110105-T4	6-15	2/26-4/2	Th	6:00-6:45 PM	\$130
110105-T5	6-15	4/14-5/19	T	6:00-6:45 PM	\$130
110105-T6	6-15	4/16-5/21	Th	6:00-6:45 PM	\$130

## KIDS SPEED & AGILITY

This 50 minute class will be conducted in a playful space where a maximum of 12 children can interact with each other and develop early sportsmanship and the fundamentals of team sports like t-ball, soccer, basketball, etc. This class will allow children to work on their problem solving and gross motor skills, all while remaining active.

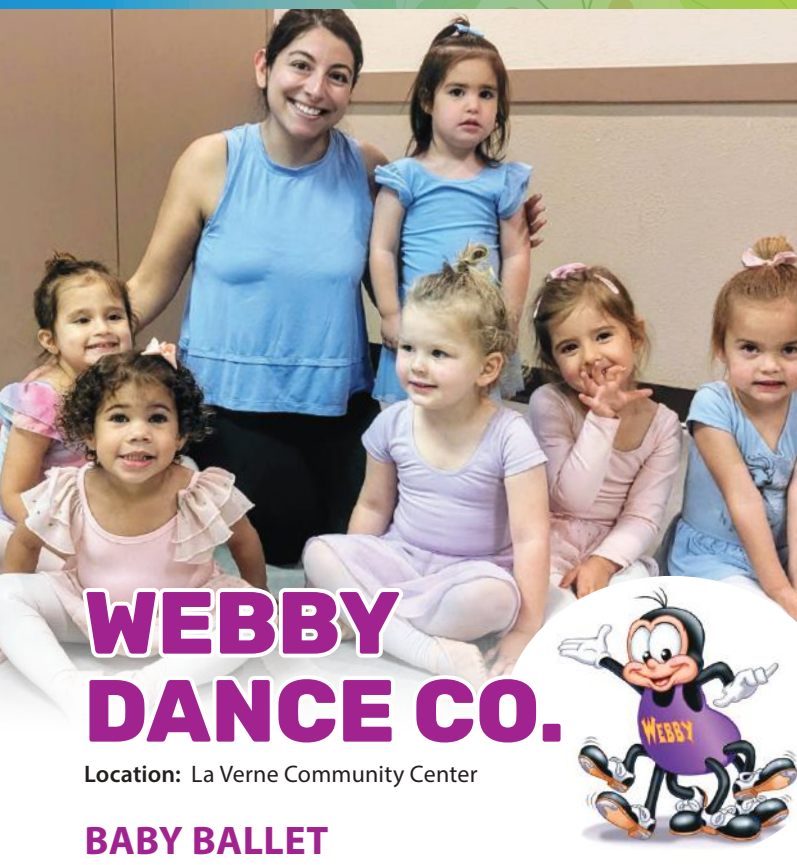
Instructor: Art & Alicia Aguilar

Location: La Verne Community Center or Kuns Park

Code	Age	Dates	Days	Time	Fee
110607-01	8-13	1/5-1/28	M/W	5:00-5:50 PM	\$70
110607-02	8-13	2/9-3/4	M/W	5:00-5:50 PM	\$90
110607-03	8-13	3/16-4/8	M/W	5:00-5:50 PM	\$60
110607-04	8-13	4/27-5/20	M/W	5:00-5:50 PM	\$80

\*No class on 1/19, 2/16, 3/30, & 4/1.





## WEBBY DANCE CO.

Location: La Verne Community Center

### BABY BALLET

This class will introduce children to beginning ballet and creative dance. It will include full props and creative imagery to keep children engaged and excited.

Code	Ages	Dates	Day	Time	Fee
110401-01	2-4	1/7 - 2/11	W	4:30 - 5:00 PM	\$105
110401-05	2-4	2/25 - 3/25	W	4:30 - 5:00 PM	\$85
110401-09	2-4	4/15 - 5/20	W	4:30 - 5:00 PM	\$105

### BALLET & TAP I

This class will introduce children to beginning ballet and tap technique in a fun and exciting environment. Classes includes age-appropriate music and movements.

Code	Ages	Dates	Day	Time	Fee
110401-02	4-6	1/7 - 2/11	W	5:05 - 5:45 PM	\$105
110401-06	4-6	2/25 - 3/25	W	5:05 - 5:45 PM	\$85
110401-10	4-6	4/15 - 5/20	W	5:05 - 5:45 PM	\$105

### BALLET & TAP II

This class will introduce children to beginning ballet and tap technique in a fun and exciting environment. Classes includes age-appropriate music and movements.

Code	Ages	Dates	Day	Time	Fee
110401-03	5-7	1/7 - 2/11	W	5:50 - 6:30 PM	\$105
110401-07	5-7	2/25 - 3/25	W	5:50 - 6:30 PM	\$85
110401-11	5-7	4/15 - 5/20	W	5:50 - 6:30 PM	\$105

### BEGINNING JAZZ & HIP HOP

This class will introduce children to today's most exciting steps and beginning dance techniques. Class includes age-appropriate music and movements.

Code	Ages	Dates	Day	Time	Fee
110401-04	7-9	1/7 - 2/11	W	6:35 - 7:15 PM	\$105
110401-08	7-9	2/25 - 3/25	W	6:35 - 7:15 PM	\$85
110401-12	7-9	4/15 - 5/20	W	6:35 - 7:15 PM	\$105



## MARTIAL ARTS

Sensei: Anthony Giron

Location: La Verne Community Center

### JAPANESE KARATE - BEGINNER

Class will introduce young students to the elements of karate in a traditional Japanese way while working on their coordination, skills, and self-confidence through various activities. Uniforms are available for purchase from the instructor and range from \$25-\$40.

Code	Age	Dates	Days	Time	Fee
110701-01	5-10	1/8 - 1/29	Th	6:00 - 7:15 PM	\$120
110701-02	5-10	2/5 - 2/26	Th	6:00 - 7:15 PM	\$100
110701-03	5-10	3/5 - 3/26	Th	6:00 - 7:15 PM	\$120
110701-04	5-10	4/2 - 4/23	Th	6:00 - 7:15 PM	\$100
110701-05	5-10	4/30 - 5/21	Th	6:00 - 7:15 PM	\$120

### JAPANESE KARATE INTERMEDIATE & ADVANCED

Students will dive deeper into karate techniques and self-defense moves while moving at a more focused pace. Intermediate students must have a purple belt and/or Sensei's approval for those moving up from beginning class. Uniforms are available for purchase from the instructor and range from \$25-\$40.

Code	Age	Dates	Days	Time	Fee
150701-01	11+	1/8 - 1/29	Th	7:30 - 8:45 PM	\$120
150701-02	11+	2/5 - 2/26	Th	7:30 - 8:45 PM	\$100
150701-03	11+	3/5 - 3/26	Th	7:30 - 8:45 PM	\$120
150701-04	11+	4/2 - 4/23	Th	7:30 - 8:45 PM	\$100
150701-05	11+	4/30 - 5/21	Th	7:30 - 8:45 PM	\$120



## TENNIS ANYONE

**Instructor:** Tennis Anyone

**Location:** Las Flores Tennis Courts, 3175 Bolling Avenue

*\*Tennis shoes and tennis racquet required.*



### PEE WEE JR TENNIS LESSONS

Is your young child tired of watching the big kids have all the tennis fun? Well, now there's a group just for the Pee Wees! This clinic is the perfect tennis intro. Students will learn the basics of the forehand, backhand, volley, and serve in a coordination building, fitness friendly, fun atmosphere. We believe that tennis will bring each of our students more fun, fitness, and friendships for a lifetime.

Code	Ages	Dates	Days	Time	Fee
110501-01	3-6	1/5-1/26	M	4:15-5:00 PM	\$119
110501-02	3-6	1/7-1/28	W	4:15-5:00 PM	\$119
110501-03	3-6	1/5-1/28	M&W	4:15-5:00 PM	\$189
110501-04	3-6	2/2-2/23	M	4:15-5:00 PM	\$119
110501-05	3-6	2/4-2/25	W	4:15-5:00 PM	\$119
110501-06	3-6	2/2-2/25	M&W	4:15-5:00 PM	\$189
110501-07	3-6	3/2-3/23	M	4:15-5:00 PM	\$119
110501-08	3-6	3/4-3/25	W	4:15-5:00 PM	\$119
110501-09	3-6	3/2-3/25	M&W	4:15-5:00 PM	\$189
110501-10	3-6	3/30-4/20	M	4:15-5:00 PM	\$119
110501-11	3-6	4/1-4/22	W	4:15-5:00 PM	\$119
110501-12	3-6	3/30-4/22	M&W	4:15-5:00 PM	\$189
110501-13	3-6	4/27-5/18	M	4:15-5:00 PM	\$119
110501-14	3-6	4/29-5/20	W	4:15-5:00 PM	\$119
110501-15	3-6	4/27-5/20	M&W	4:15-5:00 PM	\$189



### JR TENNIS ACADEMY - BEGINNERS THROUGH INTERMEDIATE

The focus of the Jr. Tennis Academy Beginning through Intermediate is on learning the 4 major strokes of the game in a dynamic, high energy, fitness friendly, fun-filled atmosphere. Students are tested to reach mastery on 3 different levels in this group. Beginners ages 14-17 should start in the Junior Tennis Academy Intermediate to Advanced.

Code	Ages	Dates	Days	Time	Fee
110502-01	7-13	1/5-1/26	M	5:00-6:00 PM	\$119
110502-02	7-13	1/7-1/28	W	5:00-6:00 PM	\$119
110502-03	7-13	1/5-1/28	M&W	5:00-6:00 PM	\$189
110502-04	7-13	2/2-2/23	M	5:00-6:00 PM	\$119
110502-05	7-13	2/4-2/25	W	5:00-6:00 PM	\$119
110502-06	7-13	2/2-2/25	M&W	5:00-6:00 PM	\$189
110502-07	7-13	3/2-3/23	M	5:00-6:00 PM	\$119
110502-08	7-13	3/4-3/25	W	5:00-6:00 PM	\$119
110502-09	7-13	3/2-3/25	M&W	5:00-6:00 PM	\$189
110502-10	7-13	3/30-4/20	M	5:00-6:00 PM	\$119
110502-11	7-13	4/1-4/22	W	5:00-6:00 PM	\$119
110502-12	7-13	3/30-4/22	M&W	5:00-6:00 PM	\$189
110502-13	7-13	4/27-5/18	M	5:00-6:00 PM	\$119
110502-14	7-13	4/29-5/20	W	5:00-6:00 PM	\$119
110502-15	7-13	4/27-5/20	M&W	5:00-6:00 PM	\$189



### JR TENNIS ACADEMY - INTERMEDIATE THROUGH ADVANCED

The Jr. Tennis Academy Intermediate through Advanced group is for students that have attained all 3 mastery levels in the Beginning Academy or are coming in with proper form on their ground strokes. This is a high energy, fitness challenging, tennis program designed to bring students to a level where they have the tools to start playing matches. Beginning students ages 14-17 should start in this group.

Code	Ages	Dates	Days	Time	Fee
110503-01	7-17	1/5-1/26	M	6:00-7:00 PM	\$119
110503-02	7-17	1/7-1/28	W	6:00-7:00 PM	\$119
110503-03	7-17	1/5-1/28	M&W	6:00-7:00 PM	\$189
110503-04	7-17	2/2-2/23	M	6:00-7:00 PM	\$119
110503-05	7-17	2/4-2/25	W	6:00-7:00 PM	\$119
110503-06	7-17	2/2-2/25	M&W	6:00-7:00 PM	\$189
110503-07	7-17	3/2-3/23	M	6:00-7:00 PM	\$119
110503-08	7-17	3/4-3/25	W	6:00-7:00 PM	\$119
110503-09	7-17	3/2-3/25	M&W	6:00-7:00 PM	\$189
110503-10	7-17	3/30-4/20	M	6:00-7:00 PM	\$119
110503-11	7-17	4/1-4/22	W	6:00-7:00 PM	\$119
110503-12	7-17	3/30-4/22	M&W	6:00-7:00 PM	\$189
110503-13	7-17	4/27-5/18	M	6:00-7:00 PM	\$119
110503-14	7-17	4/29-5/20	W	6:00-7:00 PM	\$119
110503-15	7-17	4/27-5/20	M&W	6:00-7:00 PM	\$189

### ADULT TENNIS LESSONS - BEGINNING THROUGH INTERMEDIATE

The Adult Tennis Lessons are for Adult players that are just getting started or who are playing at an intermediate level. These lessons give the "big kids" an opportunity to work on improving their skills while getting a great workout and making new friends. Students will train on level appropriate skills from learning ground strokes to volleys and serves.

Code	Ages	Dates	Days	Time	Fee
120501-01	18+	1/5-1/26	M	7:10-8:10 PM	\$119
120501-02	18+	1/7-1/28	W	7:10-8:10 PM	\$119
120501-03	18+	1/5-1/28	M&W	7:10-8:10 PM	\$189
120501-04	18+	2/2-2/23	M	7:10-8:10 PM	\$119
120501-05	18+	2/4-2/25	W	7:10-8:10 PM	\$119
120501-06	18+	2/2-2/25	M&W	7:10-8:10 PM	\$189
120501-07	18+	3/2-3/23	M	7:10-8:10 PM	\$119
120501-08	18+	3/4-3/25	W	7:10-8:10 PM	\$119
120501-09	18+	3/2-3/25	M&W	7:10-8:10 PM	\$189
120501-10	18+	3/30-4/20	M	7:10-8:10 PM	\$119
120501-11	18+	4/1-4/22	W	7:10-8:10 PM	\$119
120501-12	18+	3/30-4/22	M&W	7:10-8:10 PM	\$189
120501-13	18+	4/27-5/18	M	7:10-8:10 PM	\$119
120501-14	18+	4/29-5/20	W	7:10-8:10 PM	\$119
120501-15	18+	4/27-5/20	M&W	7:10-8:10 PM	\$189

## PICKLEBALL

**Instructor:** Tennis Anyone

**Location:** Las Flores Tennis Courts, 3175 Bolling Avenue

*\*Court shoes and pickleball paddle required.*

### JR PICKLEBALL LESSONS – BEGINNING/INTERMEDIATE

So you're hearing about this pickleball thing and you're ready to give it a shot! This clinic is the perfect pickleball intro for Jr students ages 7-13. Students will learn the basics of the game, including the areas of the court as well as all 4 major strokes: forehand, backhand, volley, and serve in a fun and dynamic format!



Code	Ages	Dates	Days	Time	Fee
110504-01	7 – 13	1/8 – 1/29	Th	4:00 – 5:00 PM	\$119
110504-02	7 – 13	2/5 – 2/26	Th	4:00 – 5:00 PM	\$119
110504-03	7 – 13	3/5 – 3/26	Th	4:00 – 5:00 PM	\$119
110504-04	7 – 13	4/2 – 4/23	Th	4:00 – 5:00 PM	\$119
110504-05	7 – 13	4/30 – 5/21	Th	4:00 – 5:00 PM	\$119

### ADULT INT/ADV TRAINING CLINIC

This is a great Clinic for Intermediate to Advanced Level students wanting to build their skill set for competitive play. Students will work on third shot drops, resets, advanced dinking, as well as other skills in a liveball setting designed to take students games to the next level.

Code	Ages	Dates	Days	Time	Fee
110505-01	14+	1/8 – 1/29	Th	5:00 – 6:00 PM	\$119
110505-02	14+	2/5 – 2/26	Th	5:00 – 6:00 PM	\$119
110505-03	14+	3/5 – 3/26	Th	5:00 – 6:00 PM	\$119
110505-04	14+	4/2 – 4/23	Th	5:00 – 6:00 PM	\$119
110505-05	14+	4/30 – 5/21	Th	5:00 – 6:00 PM	\$119

### ADULT PICKLEBALL (BEG/INT)

So you've heard the pickleball buzz! The call has been getting louder and louder and you've decided to answer. This is the perfect Pickleball intro for students ages 18+. Students will learn all of the pickleball basics including court areas, rules, and all major strokes. What are you waiting for, it's pickle time!!!

Code	Ages	Dates	Days	Time	Fee
110506-01	18+	1/8 – 1/29	Th	6:00 – 7:00 PM	\$119
110506-02	18+	2/5 – 2/26	Th	6:00 – 7:00 PM	\$119
110506-03	18+	3/5 – 3/26	Th	6:00 – 7:00 PM	\$119
110506-04	18+	4/2 – 4/23	Th	6:00 – 7:00 PM	\$119
110506-05	18+	4/30 – 5/21	Th	6:00 – 7:00 PM	\$119

### ADULT BEG/INT ROUND ROBIN PLAY

Adult students looking for games have come to the right place. The goal is to gain competitive experience through game play against lots of different opponents. Coach will rove, giving feedback, and tallying up match results. Students entering should know the basics of pickleball play.

Code	Ages	Dates	Days	Time	Fee
120504-01	14+	1/8 – 1/29	Th	7:00 – 8:15 PM	\$119
120504-02	14+	2/5 – 2/26	Th	7:00 – 8:15 PM	\$119
120504-03	14+	3/5 – 3/26	Th	7:00 – 8:15 PM	\$119
120504-04	14+	4/2 – 4/23	Th	7:00 – 8:15 PM	\$119
120504-05	14+	4/30 – 5/21	Th	7:00 – 8:15 PM	\$119

## AQUATICS

### GATORS SWIM TEAM

Come join the City of La Verne's Swim Team! You will learn skills such as team involvement and strokes for the competitive swimmer. Swimmers are encouraged to purchase additional equipment in order to help with training. Coaches will advise swimmers on what equipment is needed. Each participant must meet certain swim requirements to join the program. Swimmers will be tested on the first day of practice. Swimmers not meeting those requirements will be given a full refund.

**Coach:** Dillon Unsoeld

**Age:** 5 – 17

Code	Dates	Day	Time	Fee
111415-01	1/6 – 1/29	T/Th	6:30 PM – 8:00 PM	\$136
111415-02	2/3 – 2/26	T/Th	6:30 PM – 8:00 PM	\$136
111415-03	3/3 – 3/26	T/Th	6:30 PM – 8:00 PM	\$136
111415-04	4/7 – 4/30	T/Th	6:30 PM – 8:00 PM	\$136

\* Due to BHS & ULV games, some dry-land workouts may occur. Dates and times are subject to change due to High School/University schedules.



### GATORS WATER POLO

The Gators Water Polo team is for boys and girls ages 8 – 14. All levels are welcome, from beginners to more advanced players. The goals of the team is to teach eggbeater (treading water), head up and head down freestyle, ball handling skills, dribbling skills, passing technique, and other fundamentals of the sport. The larger goals are to encourage teamwork and good character while having fun learning a great sport. Athletes must bring goggles. Girls must wear one-piece suits, and boys must wear Speedos or Jammers. No board shorts or rash guards. Polo players will be tested on the first day of practice. Polo players not meeting those requirements will be given a full refund.

**Coach:** Dillon Unsoeld

**Age:** 8 – 14

Code	Dates	Day	Time	Fee
111409-01	1/5 – 1/28*	M/W	6:30 PM – 8:00 PM	\$119
111409-02	2/2 – 2/25*	M/W	6:30 PM – 8:00 PM	\$119
111409-03	3/2 – 3/25	M/W	6:30 PM – 8:00 PM	\$136
111409-03	4/6 – 4/29	M/W	6:30 PM – 8:00 PM	\$136

\* No class on 1/19 and 2/16.

\* Due to BHS & ULV games, some dry-land workouts may occur. Dates and times are subject to change due to High School/University schedules.



## LEGO

**Instructor:** Bricks 4 Kidz

**Location:** La Verne Community Center, 3680 D Street

\*All class have an additional \$20 supply fee (excluding Minecraft Workshop) which is paid for at the 1<sup>st</sup> class.

### LEGO® PORTAL TO ADVENTURE

Will take you on a thrilling adventure building amusement park themed models. Amusement park ticket stamped as you turn games, food, rides, and attractions into exciting model builds! All this and more awaits at Bricks 4 Kidz! A \$20 supply fee due at the first class.

Code	Ages	Dates	Days	Time	Fee
110702-01	5 – 11	1/12 – 2/9	M	4:00 – 5:00 PM	\$115

\*No class on 1/19.

### LEGO® SHARKS

Embark on an underwater adventure with Journey with Sharks at Bricks 4 Kidz, where Sharks comes to life through LEGO building! Perfect for kids aged 5-11, this class blends the thrill of shark exploration with the joy of LEGO-building. Aspiring Shark Biologists will construct LEGO models of various sharks. Dive into creating motorized sharks, intricate sea life mosaics, and discovering the wonders of the deep blue sea. Sign up now for a splash of education and a wave of fun! A \$20 supply fee is due to the instructor on first day.

Code	Ages	Dates	Days	Time	Fee
110702-02	5 – 10	2/23 – 3/16	M	4:00 – 5:00 PM	\$115



### LEGO® TRANSPORT

All aboard for an exciting journey with Transport Adventures at Bricks 4 Kidz, where kids explore the world of motion through LEGO building! Designed for ages 5–11, this class combines the fascination of vehicles with

the creativity of hands-on construction. Young Engineers will design and build LEGO models of planes, trains, automobiles, and even futuristic transports, while discovering the science that makes them move. From motorized cars to flying machines, every session brings a new challenge that sparks imagination and problem-solving. Get ready for a fun ride filled with engineering, creativity, and teamwork! A \$20 supply fee is due to the instructor on first day.

Code	Ages	Dates	Days	Time	Fee
110702-03	5 – 11	3/23 – 4/13	M	4:00 – 5:00 PM	\$115

### LEGO® SPECTACULAR SPORTS

Get ready to jump into action with Spectacular Sports at Bricks 4 Kidz, where the excitement of the game meets the creativity of LEGO building! Perfect for kids ages 5–11, this class brings favorite sports to life. Along the way, they'll explore teamwork, motion, and the mechanics behind their favorite games. It's a winning combination of learning, building, and play—because at Bricks 4 Kidz, every kid is a champion! A \$20 supply fee is due to the instructor on first day.

Code	Ages	Dates	Days	Time	Fee
110702-04	5 – 11	4/20 – 5/11	M	4:00 – 5:00 PM	\$115



The following classes are community fee-based courses offered at the La Verne Community Center and provided by Mt. San Antonio College School of Continuing Education.

**To register or request more information visit the Mt. SAC Community Education website at [communityed.mtsac.edu](http://communityed.mtsac.edu) or give us a call at (909) 274-4220.**

### CAKE & SIP

Unleash your creativity in this fun and relaxing Cake & Sip workshop! Each participant will receive a personal-sized square cake, buttercream, and a colorful palette of toppings to design their own edible masterpiece. Sip on coffee or tea while you learn simple decorating techniques in a laid-back, social atmosphere. Perfect for a night out with friends or simply treating yourself!

\*Students between 15-17 years of age must have a parent or guardian accompany them to class to sign a waiver form. **Material Fee:** \$35 (Pay directly to instructor on first day of class.)

**Location:** La Verne Community Center

**Instructor:** Susana Beattie

Ages	Dates	Days	Time	Fee
15+	1/27	T	6:00 – 7:45 PM	\$41
15+	4/2	Th	6:00 – 7:45 PM	\$41



### CANDLE MAKING FOR BEGINNERS

Learn to create beautiful, fragrant candles in this hands-on workshop! Explore different candle types, molds, colors, and scents while making your own unique designs. Perfect for beginners and hobbyists alike—leave with finished

candles and the skills to continue at home! (Class is hands on; please dress accordingly.) \*Students between 15-17 years of age must have a parent or guardian accompany them to class to sign a waiver form. **Material Fee:** \$35 (Pay directly to instructor on first day of class.)

**Location:** La Verne Community Center

**Instructor:** Quayum Abdul

Ages	Dates	Days	Time	Fee
15+	1/22	Th	6:00 – 9:00 PM	\$41

## COLD PROCESS SOAP MAKING FROM SCRATCH

Learn to make soap from scratch using the cold process method! This hands-on class covers everything you need to create beautiful handmade soaps at home. Perfect for beginners and experienced soap makers alike. (Class is hands on; please dress accordingly.)

\*Students between 15-17 years of age must have a parent or guardian accompany them to class to sign a waiver form. **Material Fee:** \$35 (Pay directly to instructor on first day of class.)

**Location:** La Verne Community Center

**Instructor:** Quayum Abdul

Ages	Dates	Days	Time	Fee
15+	6/2	T	6:00 – 9:00 PM	\$41



## HOW TO MAKE YOUR OWN BATH PRODUCTS

### (Shampoo, Shower Gel, & Bubble Bath)

Create your own luxurious bath products in this fun, hands-on class! Learn simple techniques to craft custom shampoos, shower gels, and bubble baths using natural ingredients, herbs, and essential oils. Discover tips, tools, and sources for supplies—because why buy when you can make your own spa-worthy creations? (Class is hands on; please dress accordingly.)

\*Students between 15-17 years of age must have a parent or guardian accompany them to class to sign a waiver form. **Material Fee:** \$35 (Pay directly to instructor on first day of class.)

**Location:** La Verne Community Center

**Instructor:** Quayum Abdul

Ages	Dates	Days	Time	Fee
15+	3/24	T	6:00 – 9:00 PM	\$41

## K-POP STARS! (Dance Workshop)

Step into the spotlight with K-Pop Stars! In this high-energy dance class, students will learn fun choreography inspired by their favorite K-Pop hits while building rhythm, coordination, and stage confidence. Perfect for aspiring performers, this class blends movement, expression, and teamwork for an exciting and creative experience.



**Location:** La Verne Community Center

**Instructor:** Cheryl Wei

Ages	Dates	Days	Time	Fee
8 – 14	3/6 – 3/27	F	4:30 – 5:30 PM	\$85

## LEARNING HOW TO MAKE BODY BUTTER

Whip up your own luxurious body butter in this fun, hands-on class! Learn simple techniques to create rich, nourishing lotions using everyday tools and natural ingredients. Customize your blends with your favorite scents and therapeutic oils to craft the perfect at-home spa experience. (Class is hands on; please dress accordingly.)

\*Students between 15-17 years of age must have a parent or guardian accompany them to class to sign a waiver form. **Material Fee:** \$35 (Pay directly to instructor on first day of class.)

**Location:** La Verne Community Center

**Instructor:** Quayum Abdul

Ages	Dates	Days	Time	Fee
15+	4/22	W	6:00 – 9:00 PM	\$41

## SEASONAL SWEETS COOKIE DECORATING

Get into the festive spirit with our seasonal cookie decorating courses! In each hands-on workshop, students will learn how to decorate six large sugar cookies using royal icing techniques and creative design skills. With a new theme each month—Sweethearts & Sprinkles (February) and Shamrocks & Sugar (March)—this series is perfect for beginners and hobby bakers alike. All materials are provided, and students will leave with beautifully decorated cookies to share (or keep!). Sign up for one or all sessions—no prior experience needed!

\*Students between 15-17 years of age must have a parent or guardian accompany them to class to sign a waiver form. **Material Fee:** \$35 (Pay directly to instructor on first day of class.)

**Location:** La Verne Community Center

**Instructor:** Susana Beattie

Ages	Dates	Days	Time	Fee
15+	2/12	Th	6:00 – 8:30 PM	\$41
15+	3/17	T	6:00 – 8:30 PM	\$41



## SOAP MAKING FOR BEGINNERS

Transform your bath into a spa-like escape with handmade glycerin soaps! In this fun, hands-on class, you'll create a variety of soaps using colors, molds, fragrances, herbs, and more. Learn techniques for making natural, organic, or novelty soaps—perfect for gifts, décor, or sensitive skin. (Class is hands on; please dress accordingly.)

\*Students between 15-17 years of age must have a parent or guardian accompany them to class to sign a waiver form. **Material Fee:** \$35 (Pay directly to instructor on first day of class.)

**Location:** La Verne Community Center

**Instructor:** Quayum Abdul

Ages	Dates	Days	Time	Fee
15+	2/9	M	6:00 – 9:00 PM	\$41



# LA VERNE Preschool



## PARENT & ME Preschool

### A Parent Participation Program

Children and parents will have the opportunity to learn, create, and explore together. Meet other parents and make new friends!

Registration ongoing through April 2026.

#### Instructors:

Miss Sally, Miss Lauri, Miss Melinda,  
Miss Vanessa & Miss Sylvia

Location: Veterans Hall

Sessions: Monthly

Ages	Day	Time	Fee
18 mo – 3 yrs	M/W	9:15 – 11 AM	\$125/mo
18 mo – 3 yrs	T/Th	9:15 – 11 AM	\$125/mo

### Join us for a social recreational program for children ages 3 to 4.

We introduce children to numbers, colors, shapes, and the alphabet, story time, music, free play, and crafts. English as a first language is spoken and strongly encouraged.

**BIRTH CERTIFICATES REQUIRED AT TIME OF REGISTRATION.  
CHILD MUST BE THREE YEARS OLD BY THE FIRST DAY OF SCHOOL.  
CHILDREN MUST BE TOILET TRAINED - NO DIAPERS OR PULL-UPS.  
NO EXCEPTIONS.**

Registration: Ongoing

Instructors: Miss Sally, Miss Melinda and Miss Sylvia

Sessions: Now through May 2026

Ages	Day	Time	Fee	Location
3 – 4	M/W/F	9:00 – 11:30 AM	\$190/month	Veterans Hall & Oak Mesa
3 – 4	T/Th	9:00 – 11:30 AM	\$175/month	Veterans Hall

### WAIT LIST POLICY

Wait lists will be on file until the end of May of the current school year. When being placed on the waiting list, the child must be potty trained and ready to begin preschool. If your child is called from the waiting list and they are not ready to start preschool, the child will be taken off the wait list.



## ACTIVITY REGISTRATION POLICY INFORMATION

### ONGOING REGISTRATION. REGISTER TODAY! (UNLESS OTHERWISE NOTED)

**ALL REGISTRATION WILL BE TAKEN ON A FIRST-COME, FIRST-SERVED BASIS. NO EXCEPTIONS! PRE-REGISTRATION IS REQUIRED ON ALL ACTIVITIES.**

Online registration may be done by visiting our website at [www.laverneca.gov](http://www.laverneca.gov). Mail registrations to Parks & Recreation Office, 3660 D Street, La Verne, CA, 91750. It is the customer's responsibility to confirm registration times and dates. To confirm by mail, PLEASE ENCLOSE A STAMPED, SELF-ADDRESSED ENVELOPE or call the Parks & Recreation Office at (909) 596-8700. If a participant appears at the wrong class or does not appear for the class, no transfers will be made and no refunds will be granted.

**NO TELEPHONE REGISTRATIONS WILL BE ACCEPTED FOR ANY ACTIVITY – NO EXCEPTIONS!**

Fees may be paid by cash, money order, Visa, Mastercard, Discover, or check made payable to the City of La Verne. All fees must be paid at the time of registration. THERE WILL BE A \$25 CHARGE ON ALL RETURNED CHECKS.

**A 3% credit card fee will be applied to all credit card transactions. Cash and check transactions are not subject to this fee.**

**ALL PRICES, POLICIES, AND PROGRAMS ARE SUBJECT TO CHANGE WITHOUT NOTICE.**

### HOLD HARMLESS AGREEMENT

Participants must sign a consent form before enrolling in any activity or excursion. For children: Parent or Legal Guardian signature is required. For adults: each participant must sign their own consent form.

### REFUND POLICY

A \$15 administration fee will be charged for all refunds, per participant. No refunds will be issued for activities that are \$10 or less. Requests for refunds for excursions must be made no later than the advertised cancellation date. Requests for refunds for classes must be made 24 hours after the first class or, if the class is a 1 day class no less than three (3) working dates prior to the class. Refunds will be processed within 2 to 3 weeks in the form of a check. **No credit card refunds will be issued.** No partial refunds will be given. Full refunds will be given if an activity is canceled by the Parks & Recreation Office.

### TRANSFER POLICY

Transfer requests must be made within 24 hours of the first class by the registered participant or the parent or guardian of the registered participant if under 18 years of age. If participant transfers to a more expensive activity, participant must pay the additional fee at time of transfer. If the activity is less expensive, a refund will be processed.

### PARENT/GUARDIAN LATE POLICY

Children 10 and under will only be released to a parent or guardian. Instructors will retain class participants at the class location until a responsible adult reports for each child. Children should not leave the class location unattended.

If, for any reason, a parent or guardian cannot pick up their child from class between the end of class and 5 minutes thereafter, the parent or guardian will be ASSESSED A \$5 PER 5 MINUTES LATE FEE, PAYABLE AT THE PARKS & RECREATION OFFICE, 3660 D Street, BEFORE THE NEXT CLASS. Continued late pick up can result in the child being dropped from the class.





All facility and park reservations may be made at the Parks & Recreation Office, 3660 D Street, Monday through Thursday from 8:30 AM to 5:00 PM.

Reservations may be made up to one year in advance. Appointments must be made to view the La Verne Community Center and Veterans Hall. For viewing appointments, please contact the Parks & Recreation Office at (909) 596-8700.

**NOTE:** Consumption of alcoholic beverages is prohibited in all City park facilities. Animals (including reptiles, birds, etc.), motordriven vehicles and bounce houses/slides are also prohibited. A park permit must be obtained for the use of electronic equipment, amplified music or amplification systems. Radios must be used so as not to disturb other park users.

## FACILITIES

### LA VERNE COMMUNITY CENTER

Located at 3680 D Street behind the La Verne City Hall. The La Verne Community Center is a 14,000 sq. ft. building with multiple rooms, commercial kitchen, and outdoor patios for classes, meetings, and a main hall that accommodates up to 230 guests for receptions, celebrations or corporate events. Reservations may be made up to one year in advance. Call (909) 596-8700 for more information.

### VETERANS HALL

Located at 1550 Bonita Avenue. Veterans Hall has a beautiful main hall with wood floors and rich architecture with access to a full service kitchen. This facility is warm and quaint and can host up to 80 guests for meetings, and smaller celebrations. Reservations may be made up to one year in advance. Call (909) 596-8700 for more information.

## SKATE PARK

The park is located on the northwest corner of the Bonita High School complex at 3102 D Street and is open from 3:30 PM to dusk while school is in session and from 8:00 AM to dusk during non-school hours. In order to keep all of our skateboarder's safe and healthy, safety gear (helmets, elbow pads and kneepads) are required. If you have any questions, please contact the Parks & Recreation Department at (909) 596-8700. **NO BIKES ALLOWED.**

## PARKS

### WHEELER AVENUE PARK

Located at 1499 Palomares. Wheeler Avenue Park has two lighted adult softball fields and a basketball court. This is an excellent site for weekend tournaments or private league use. There are discount rates for non-profit organizations.

### PARK SHELTER RENTALS

All reservations may be made up to one year in advance and **MUST BE MADE AT LEAST TWO WEEKS IN ADVANCE.** Reservations and permits are issued from 8:30 AM to 5:00 PM Monday through Thursday. Come in and pick up a packet or call (909) 596-8700 for more information.

### LAS FLORES AQUATICS CENTER

Located at 3175 Bolling Avenue. The aquatic facility is great for company picnics, summer church outings, or end-of-year school parties. For more information and reservations, call the Parks & Recreation Office at (909) 596-8700. Reservations may be made Monday through Thursday from 8:30 AM to 5:00 PM. Reservations may be made up to one year in advance and **MUST BE MADE AT LEAST TWO WEEKS IN ADVANCE.**




**LOS ANGELES COUNTY PUBLIC LIBRARY LA VERNE**

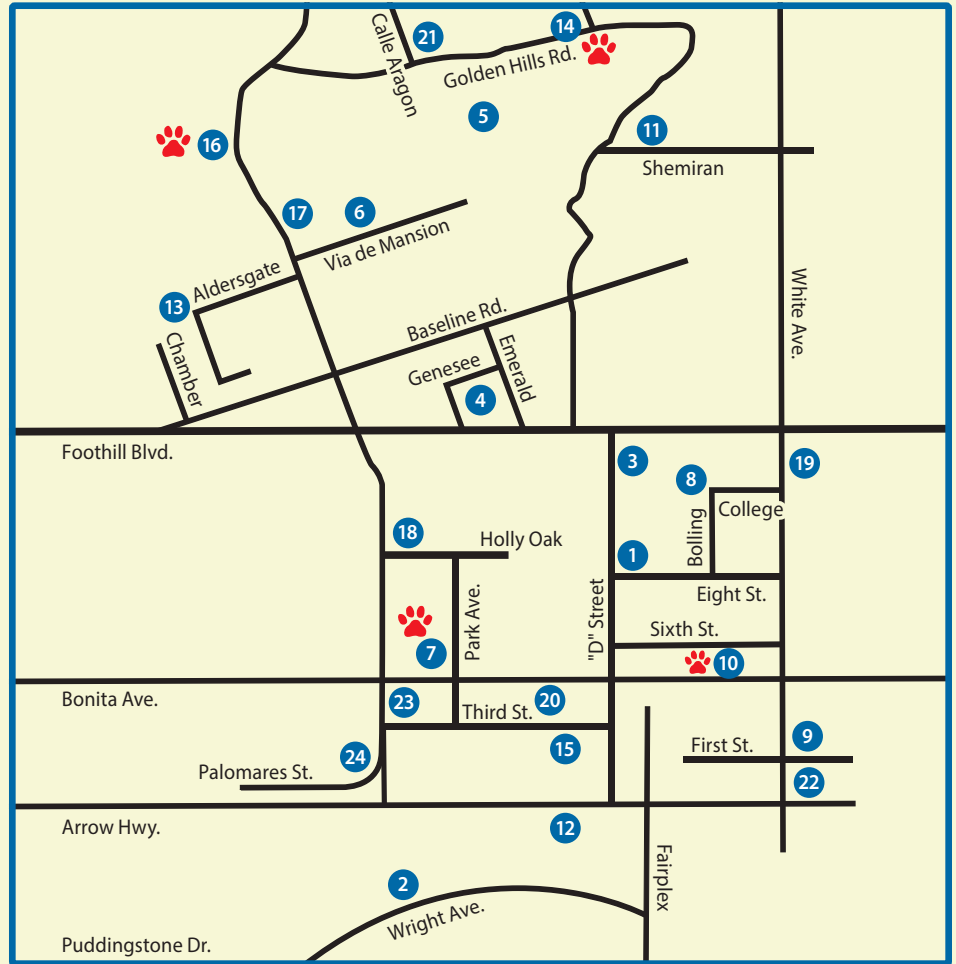
3640 D Street  
(909) 596-1934

#### SCHEDULE:

Monday	CLOSED
Tuesday	12:00 - 8:00 PM
Wednesday	12:00 - 8:00 PM
Thursday	10:00 AM - 6:00 PM
Friday	10:00 AM - 6:00 PM
Saturday	10:00 AM - 6:00 PM
Sunday	CLOSED

# City Parks & Facilities


- 1. LA VERNE SPORTS PARK/SKATE PARK**  
3102 D Street  
Lighted Baseball Fields •  
Lighted Soccer Fields • Football Field •  
Skate Park
- 2. CHALLENGER PARK**  
1909 Wright Avenue  
Unlighted Basketball Court • Picnic Tables
- 3. CITY HALL & COMMUNITY CENTER**  
City Hall - 3660 D Street  
Community Center - 3680 D Street  
Large Rental Room • Small Meeting Rooms
- 4. EMERALD PARK**  
1900 Genesee  
Soccer Field • Picnic Shelter • Tot Lot
- 5. GOLDEN HILLS WILDERNESS PARK**  
2300 Golden Hills Road  
Nature Trail
- 6. HERITAGE PARK**  
5001 Via De Mansion  
Tot Lot • Gazebo • Picnic Tables •  
Historical Facilities • Stage
- 7. KUNS PARK**  
1600 Bonita Avenue  
Restroom Facilities • Picnic Shelter • Tot Lot  
 Dogs allowed on a leash
- 8. LAS FLORES PARK/AQUATIC CENTER**  
3175 Bolling Avenue  
Restroom Facilities • Robert Rodriguez Pavilion  
Picnic Shelters • Tot Lot • Unlighted Softball  
Field • Multi-purpose Field • Lighted Tennis  
Court • Volleyball Court • Swimming Pool •  
Horseshoe Pit • Lighted Pickleball Courts
- 9. LA VERNE CITY YARD**  
2620 First Street
- 10. LINCOLN PARK**  
2525 White Avenue  
Corner of 6<sup>th</sup> and White Avenue  
Picnic Tables • Tot Lot  
 Dogs allowed on a leash
- 11. LIVE OAK PARK**  
5701 Shemiran  
Picnic Shelter • Tot Lot • Lighted Tennis Courts •  
Multi-purpose Field
- 12. LORDSBURG PARK**  
1922 Walnut Street  
Tot Lot • Unlighted Basketball Court
- 13. LOS ENCINOS PARK**  
1101 West Aldersgate Drive  
Corner of Aldersgate and Chamber  
Picnic Tables • Tot Lot • Nature Trail Picnic  
Shelter • Unlighted Basketball Court



- 14. LOWELL BRANDT PARK**  
7201 Stephens Ranch Road  
Restroom Facilities • Picnic Tables • Tot Lot •  
Unlighted Multi-Purpose Field • Unlighted  
Basketball Court • Volleyball Court  
 Dogs allowed on a leash
- 15. MAINIERO SQUARE**  
Corner of 3<sup>rd</sup> and D Street  
Picnic Tables • Stage
- 16. MILLS PARK**  
5601 Wheeler Avenue  
Picnic Tables • Tot Lot  
 Dogs allowed on a leash
- 17. OAK MESA PARK**  
5400 Wheeler Avenue  
Restroom Facilities • Picnic Shelter • Tot Lot •  
Lighted Soccer Fields
- 18. PELOTA PARK**  
1505 Holly Oak  
Lighted Baseball Fields • Restroom Facilities •  
Picnic Table
- 19. PRICE/HAYES PARK**  
2500 Price Avenue  
Tot Lot
- 20. PUBLIC SAFETY FACILITY**  
2061 Third Street
- 21. RUSTIC CANYON PARK**  
7311 Calle Aragon  
Tot Lot • Picnic Table
- 22. VALLEY RANCHO PARK**  
2909 Arrow Highway  
Tot Lot • Picnic Table
- 23. VETERANS HALL**  
1550 Bonita Avenue  
Medium Rental Room • Tot Lot • Picnic Table
- 24. WHEELER AVENUE PARK**  
1499 Palomares Avenue  
Picnic Tables • Tot Lot • Lighted Softball Fields •  
Lighted Basketball Court



## VISIT OUR DOG FRIENDLY PARKS!

Dogs must be on a leash at all times.  
Only parks listed with the  allow dogs.

PRESORTED  
STANDARD

U.S. Postage

**PAID**

San Dimas, CA 91773  
Permit No. 37



**City of La Verne**

3660 D Street La Verne, CA 91750  
(909) 596-8726  
www.laverneca.gov

\*\*\*\*\*ECRWSEDDM\*\*\*\*\*

**RESIDENTIAL CUSTOMER**

4th Annual

THE CITY OF LA VERNE'S



**EGG-CELLENT**  
*Adventure*

Saturday, March 28, 2026  
9:00 AM – 12:00 PM

**Heritage Park**  
5001 Via De Mansion

The Parks & Recreation Department is thrilled to invite you to the City of La Verne's 4<sup>th</sup> Annual Egg-cellent Adventure!

This free, family-friendly event promises a day filled with fun and excitement for all ages. Come and explore our festive vendor booths, enjoy delicious food, groove to live music, and create memorable crafts. Don't forget to snap a photo with the Easter Bunny and join in on a variety of activities in the park. Mark your calendars—you won't want to miss this egg-straordinary celebration!

**Egg Hunt Ages & Times**

1, 2, & 3	10:00 AM – 10:25 AM
4, 5, & 6	10:25 AM – 10:50 AM
7, 8, & 9	10:50 AM – 11:15 AM
10, 11, & 12	11:15 AM – 11:40 AM



Please contact the  
Parks & Recreation  
Department  
for more information  
at (909) 596-8700.