

HIKVISION LED Tool  
Brilliant Performance, Simplified

HIKVISION LED Tool  
Brilliant Performance, Simplified



End-to-End Visualized  
Configuration



High Performance  
and Stability



Display Optimization &  
Wireless Casting



Multi-Screen  
Management





# End-to-End Visual Configuration

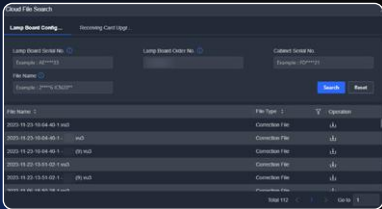
- Light up displays in three steps—configure layout, draw connections, add cabinets.
- Get configuration files from screen, import locally, or download from the cloud.
- Manage multiple controllers in batch: OTA upgrades, restarts, password resets, etc.



Configure layout



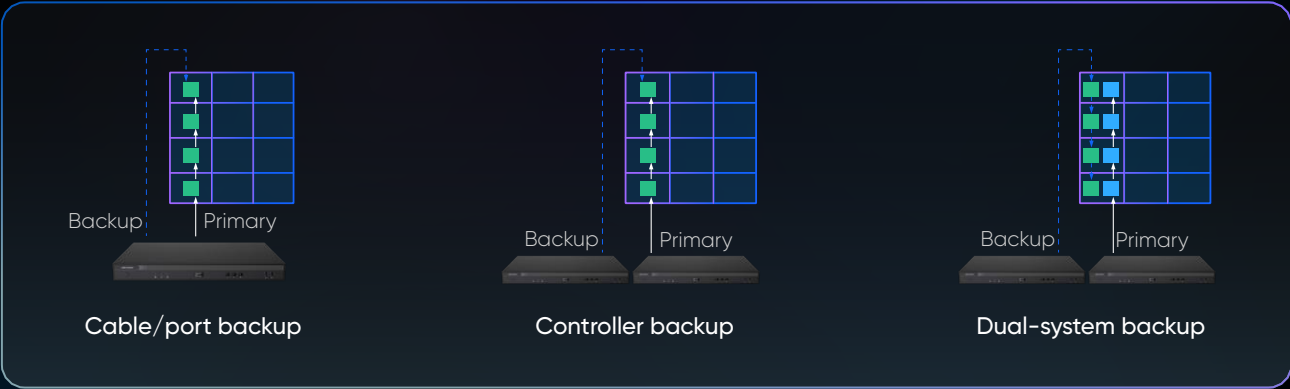
Draw connections



Cloud file search

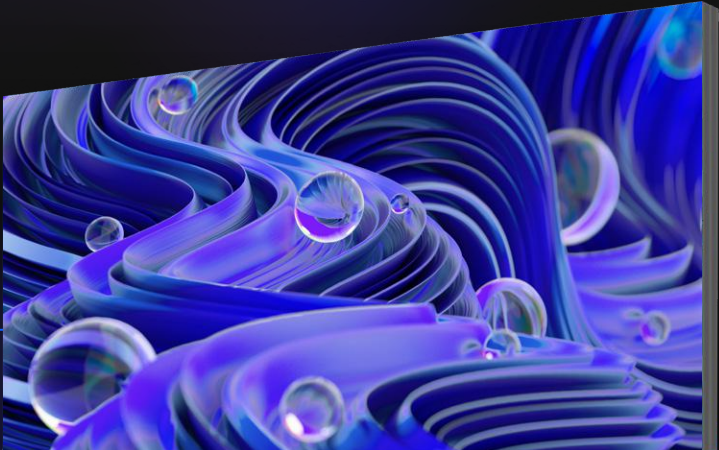
# High Performance and Stability

- Triple backup (cable/port, controller, and dual-system) ensures continuous availability.
- Supports third-party LED modules with mainstream driver ICs and customizable cascading configurations.

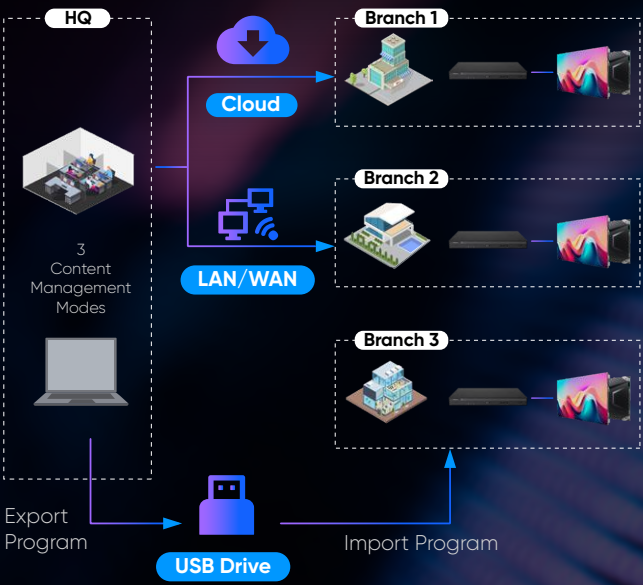


# Display Optimization & Wireless Casting

- Correct color inconsistencies via local, cloud, or manual approaches.
- Switch between display modes and adjust brightness, gamma, and color temperature.
- Mirror PC or mobile content directly to LED screens via WonderCast.



# Multi-Screen Management



- Design and schedule rich media programs remotely—no external media boxes required. Configure and preview multi-source video.
- Set timed schedules for programs, brightness, and power operations.
- Monitor screen content and device status in real time, including temperature, CPU, memory, and network.