



Holme Lacy
College



**YOUR FUTURE
STARTS HERE**



**FULL-TIME
PROSPECTUS
2026-27**

What's inside.

	Page
Welcome	3
Open Events	4
8 Great Reasons	6
Your Pathways After School	10
How to Apply	12
Getting to College	14
Land-based Courses	
Introduction to Horticulture & Animal Skills	18
Land-based Studies	19
Agriculture	22
Animal Care	26
Blacksmithing	30
Introduction to Farriery	32
Introduction to Forestry & Arboriculture	36
Horse Care	40
More Information	
College Facilities	42
Apprenticeships	50
Student Services	54
Safeguarding & Support	56
Student Funding	60
Student Enrichment	62
Planning My Future	64



Welcome to Holme Lacy College.

At Holme Lacy College, located just six miles from Hereford city, we deliver a wide range of specialist land-based courses. The campus benefits from a commercially managed 224-hectare organic farm with a pedigree herd of Hereford cattle and large flock of Lleyen sheep as well as arable crops. Set alongside the beautiful River Wye, the farm includes areas of native woodland, lakes and traditional Herefordshire orchards. The campus itself is home to a well-stocked animal care unit, brand new equestrian centre and fully equipped mechanical workshops.

Holme Lacy College has a long and excellent reputation for courses in blacksmithing and farriery. Home to the internationally renowned National School of Blacksmithing and Hereford School of Farriery, it boasts the largest training forge in Europe.

The College also hosts the region's first dedicated training centre for low-carbon technology where students can qualify in the installation of solar, air and ground-source heating systems and retrofit construction technologies.

No matter which course you choose you will be given the opportunity to develop new skills, make new friends and be a part of a thriving and caring college community. I sincerely hope that you will choose to join us and I look forward to welcoming you in the future.



David Williams
Principal & Chief Executive



Open Events.

Saturday 8th November 2025

10:00am - 12:00pm

Saturday 18th April 2026

10:00am - 12:00pm



**Pre-book
your place
online.**





Open events are not to be missed.

It's a great opportunity to see everything Holme Lacy College has to offer.

- Meet the tutors and learn more about the courses
- Take a tour around our amazing facilities and buildings
- Chat to our friendly Student Services team, who can advise you on the application process and answer any questions you may have
- Get financial advice from our Student Finance team



Discover more
at hlnsc.ac.uk

8 Great Reasons

to choose Holme Lacy College.

224

Hectare
mixed
organic farm



**Equestrian
Centre**



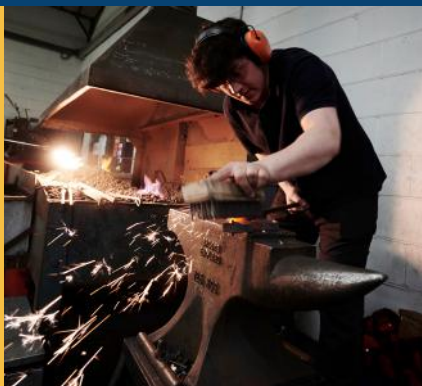
**Our fantastic facilities will help
you gain practical and technical
experience that will help you in
your future workplace**



**Taught by
industry
experts**



**FREE student
parking**



**Rural Crafts
Centre**



**We're here to
SUPPORT you**

**Home to the National School
of Blacksmithing and Hereford
School of Farriery**

**Your
Journey
Begins
Here.**





Your Pathways After School.

**Student
Services**

Peter Smith

Student Services Manager

T: 0800 032 1986

E: p.smith@hlnc.ac.uk



Vocational

If you're aged between 16-18 years old you will have a study programme specifically tailored to meet your educational needs and career aspirations. It consists of your main chosen course as well as further development of maths, English and employability skills.

A Levels

If you're looking to study A Levels, our Ludlow Sixth Form College provides an excellent choice of A Level subjects. Students often progress on to higher education and secure places at Russell Group universities.

Apprenticeships

We currently offer a variety of different apprenticeship subjects and routes ranging from Level 2 qualifications right up to Degree Level. This route allows you to combine work and study through on the job training with classroom learning.

T Levels

These courses offer you a mixture of classroom learning with workplace experience. During the course you will put your skills and knowledge into practice during an industry placement of 315 hours.

GCSE's

This is a one-year GCSE course designed for students wishing to develop their maths and/or English skills and improve their grades. Students will require a grade 4 (grade C) in both subjects to progress to any A Level course or Level 3 Vocational course.

The course will help you to improve on the areas you find the most difficult, building your confidence as well as your understanding and skills. For students who do need to re-sit either (or both) GCSE maths or English, it will be accommodated into your programme of study, as day and evening classes are available.

Qualifications Guide

All our courses have bespoke entry requirements, please refer to our Qualifications Guide on our website for more information.



Find out more on
our **website.**

Let's Get Started.



How do I apply?

1 Discover

Use this prospectus to find out about Holme Lacy College or by visiting our website hlnc.ac.uk

2 Visit an open event

Get a feel for what makes Holme Lacy College a great choice. This will also be a great opportunity to meet the tutors and tour of facilities.

3 Apply now

Head to our website to complete an application form. Apply as soon as you can to secure your place.

4 We'll keep in touch

An acknowledgement email will be sent to you within 7 working days of receiving your application.

5 Advice and guidance session

You may be invited to attend an advice and guidance session or take part in a competency or practical test. The advice and guidance session will give you the opportunity to discuss your reasons for choosing your course and what your future plans may be. The tutor is there to help, so please ask as many questions as you need, to make sure you are happy with your choice.

6 Enrolment

You will be informed of the enrolment dates in August 2026.



Discover more
at hlnsc.ac.uk



Getting to College.

Holme Lacy College is located in a rural setting, about 6 miles south-east of Hereford city centre.

Travelling by bus? Students travelling to Holme Lacy from Hereford can catch the Yeomans 453/454 services towards Fownhope. This service leaves Hereford Country Bus Station hourly, and stops directly outside Holme Lacy college.

Travelling by car? Holme Lacy College operates a free parking permit system for students and staff. Students can park in any of the allocated car parks on site. To use the car park you must apply for a parking permit, which is then displayed on your windscreen.

We also have plenty of bike racks available so you can securely lock your bike during the day.

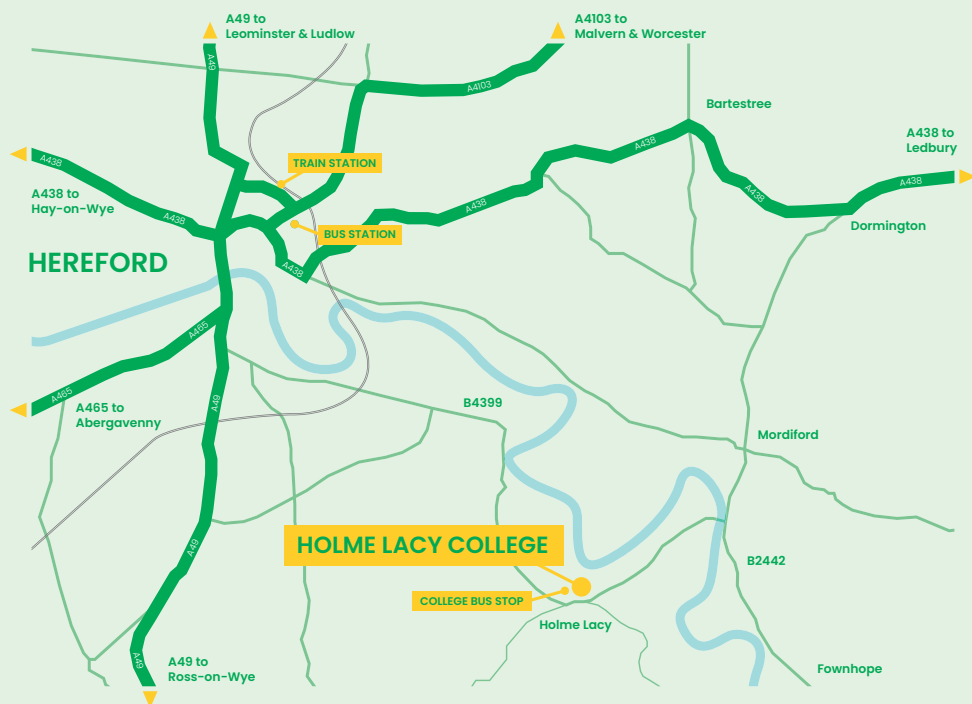
Herefordshire Council support the college by allocating travel passes to students who live over 3 miles from the College.

Applications open on the 4th May 2026 - use the QR code below for more information. The College can support with your travel costs if you are eligible for a bursary - please refer to page 136 for more details.



**Find out more
by scanning
the QR code.**

Map



Travel by bus

A bus service operates from Hereford city centre



Travel by car

Parking available on-site



Travel by bike

On-site bike racks

The background image is a scenic landscape. In the foreground, there is a grassy hillside with several sheep, including a large adult sheep and two smaller lambs. The middle ground shows a line of trees and a body of water in the distance. The sky is overcast. The text is overlaid on the left side of the image.

Our Land-based Courses.

We offer courses from Entry Level right up to Level 3 and will help prepare you for a career in agriculture, animal care, equine, forestry and rural crafts including blacksmithing and farriery.





Entry Level 3

1 Year

Introduction to Horticulture & Animal Skills

As well as learning a variety of useful rural skills, including animal health, animal care, estate maintenance and horticulture, students will also be involved in a range of wider activities. There are also a variety of trips and visits, plus fundraising activities and opportunities to socialise.

This is a general, Entry Level, skills related course which provides students with the opportunity to experience and learn about a variety of horticulture and animal skills before progressing into further education or into the workplace. Students will be supported in developing their life skills needed to help prepare them for the world of work or further study, including their English, maths, communication, healthy living and social skills.

Why choose us

Holme Lacy College is a wonderful setting, with extensive animal care facilities and it's own organic farm.

What you could do next

On successful completion, your study options may include progression to a Level 1 Land-based studies course.

Popular modules

- Animal health and welfare
- Horticulture
- Estates maintenance
- Community environment project
- Team building

This course is taught across Herefordshire College and Holme Lacy College.

Discover more
[at hlnsc.ac.uk](http://at.hlnsc.ac.uk)



Level 1

1 Year

Land-based Studies

This course provides an ideal introduction to land-based industries, including animal care, agriculture and equine and will help students decide if these are areas in which they would like to work. Individuals will take part in a variety of exciting practical projects, both on the estate working with cattle, sheep and horses and in the animal care unit with a range of species. There are educational visits to such places as zoological gardens, wildlife parks, farms, agricultural shows or markets. Students will also need to complete 60 hours of work experience in the land-based sector.

Why choose us

We offer support for all students to ensure they enjoy their course and progress. Students will be able to work on the College farm with livestock and machinery, they will also work with a variety of horses and small animals. The course is divided into practical and theory lessons to allow students to gain skills and knowledge to be assessed in different learning environments.

What you could do next

Progression routes may include full time or apprenticeship at Level 2 in Agriculture, Animal Care and Horse Care.

Employment options may include farm work, stable groom, kennel or cattery assistant or a role in horticulture.

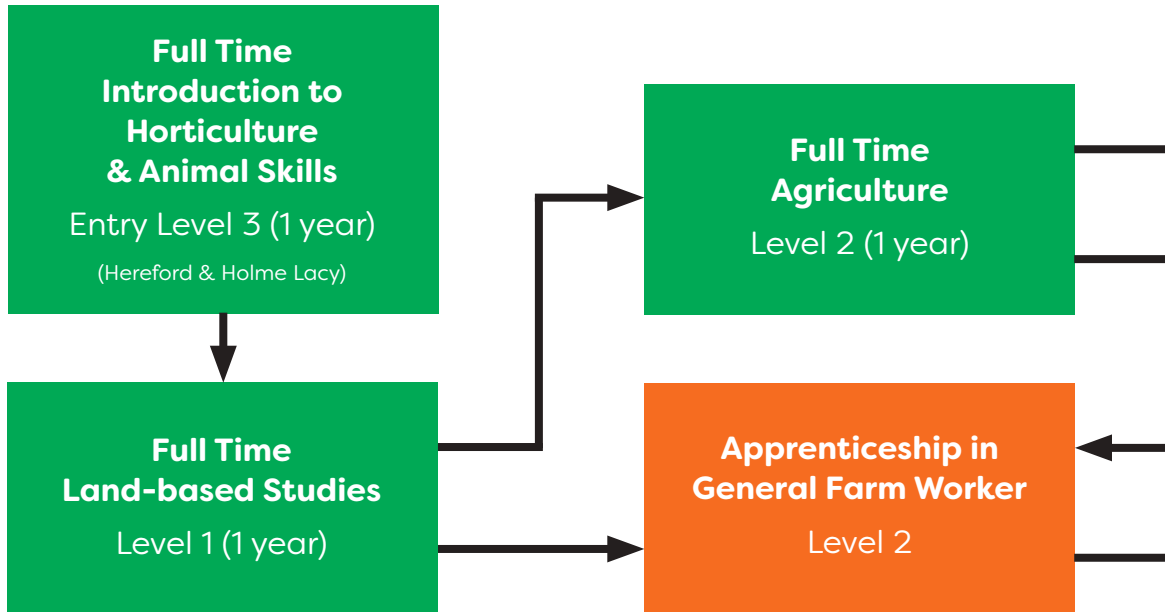
Popular modules

- Assist with the movement, handling and accommodation of animals
- Assist with the preparation for the exercise and aftercare of horses
- Introduction to production of livestock and breeds
- Carry out tractor operations

Discover more
at hlnc.ac.uk

Agriculture

Progression Map



Short Courses

Visit hlnc.ac.uk for
a full list

Course Entry Requirements

The information below outlines the minimum entry requirements for the different types of courses we offer.

Entry Level 3 Course

No formal entry requirements.

Level 1 Course

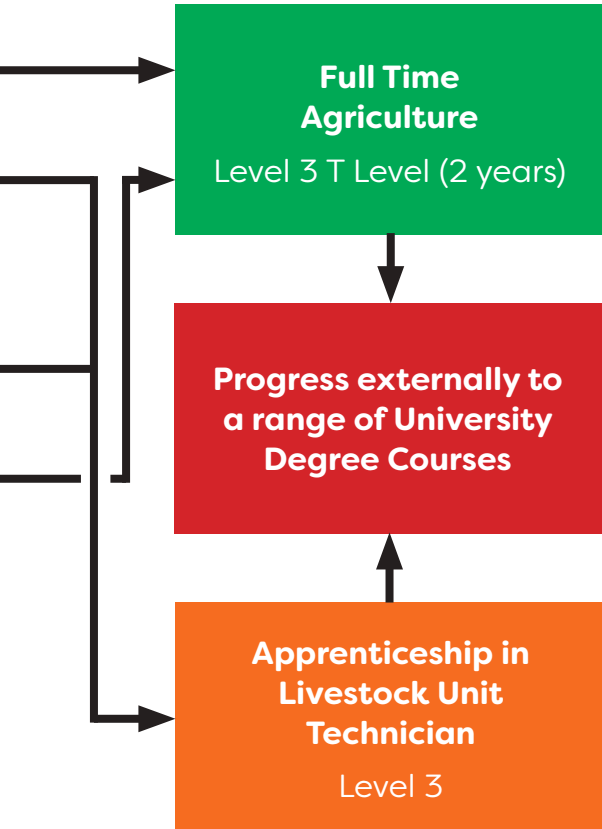
A minimum of four GCSEs at grade 2, including English and maths or successful completion of a Foundation or Entry Level 3 qualification and good progress with English and maths.

Level 2 Course

A minimum of four GCSEs at grade 3, including science, English and maths or successful completion of a relevant Level 1 qualification. Students without grades 9-4 in GCSE English and maths must demonstrate good attendance to English and maths lessons and must attend all GCSE exams.

Level 3 Course

A minimum of five GCSEs at grade 4, including science, English and maths or successful completion of a relevant Level 2 qualification at merit grade. Students without grades 9-4 in GCSE English and maths must demonstrate good attendance to English and maths lessons and must attend all GCSE exams.



All full-time courses can lead to employment as well as the routes shown.



Level 2

1 Year

Agriculture

Students will gain experience of tractor operations, livestock tasks and estate skills that will be underpinned by theoretical classroom work and backed up with 150 hours of relevant work experience in the industry. Throughout the year students will gain a range of practical experience on the College farm.

There will be opportunities for students to visit relevant shows and farms to link to their learning. Upon successful completion of the course, they would have the opportunity to be entered for a certificate of competence of which examples could include telehandler operation, sheep shearing or ATV operation.

Why choose us

Classroom-based learning is regularly linked with the tasks undertaken at our 224-hectare organic mixed college farm. The farm is well-equipped with machinery and runs a pedigree herd of Hereford cattle, a flock of Lleyn ewes and a large arable enterprise. This enables students to gain valuable practical skills and key underpinning knowledge in order to progress further in the industry. The College has strong links within the agricultural sector, with guest speakers and visits to local farms enhancing the learning experience.

What you could do next

Progression routes may include Level 3 Agriculture, Intermediate or Advanced Apprenticeship in Agriculture.

Employment options may include agriculture and allied industries.

Popular modules

- Machinery operations
- Farm animal production
- Farm estate maintenance
- Crop husbandry
- Working in the industry
- Health and safety

Discover more
at hlnc.ac.uk



Level 3

2 Years

T Level

Agriculture

This course is ideal for those working towards positions of responsibility in the agricultural industry and is based on an integration of theoretical and practical sessions backed up by work experience. Students will gain an understanding of all aspects of modern farming practices based around our College farm which will cover a wide range of livestock and arable operations. You will also enjoy a range of trips to various local and national shows and demonstrations.

Why choose us

Classroom-based learning is regularly linked in with the tasks undertaken at our 224-hectare organic farm. The farm is well-equipped with machinery and runs a pedigree herd of Hereford cattle, a flock of Lleyn ewes and a large arable enterprise. This enables students to gain valuable practical skills and key underpinning knowledge in order to progress further in the industry. The College has strong links within the agricultural sector, with guest speakers to visits to local farms enhancing the learning experience.

What you could do next

Progression routes may include Advanced Apprenticeship in Agriculture, Higher Education or Level 4 Diploma in Agriculture.

Employment options may include stock person, contractor or advisory work or commercial representative.

Popular modules

- Machinery operations
- Livestock husbandry
- Business management
- Agricultural crop production

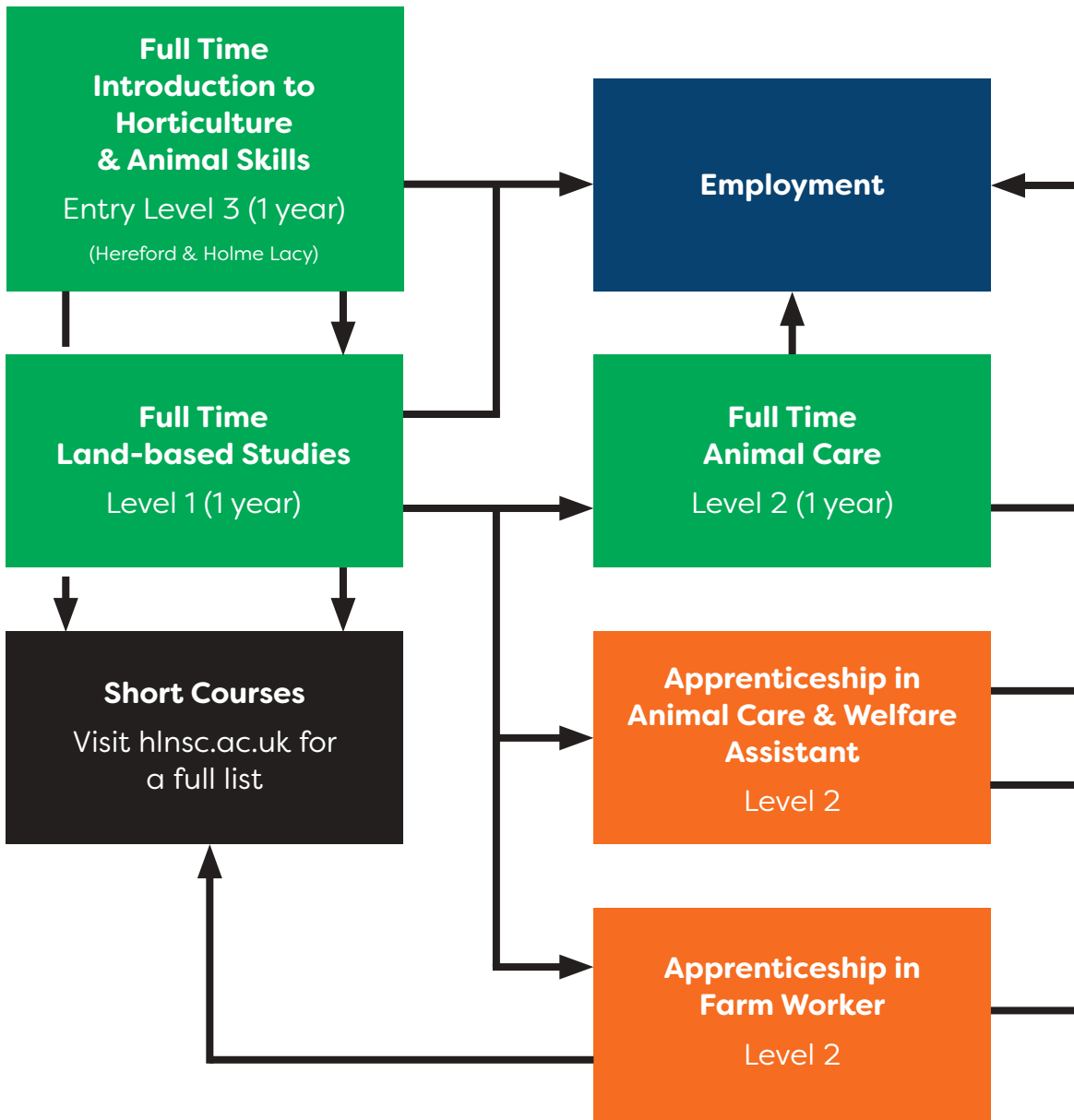


This qualification is the equivalent of up to 168 UCAS Points.

Discover more
at hlnc.ac.uk

Animal Care & Management

Progression Map



Course Entry Requirements

The information below outlines the minimum entry requirements for the different types of courses we offer.

Entry Level 3 Course

No formal entry requirements.

Level 1 Course

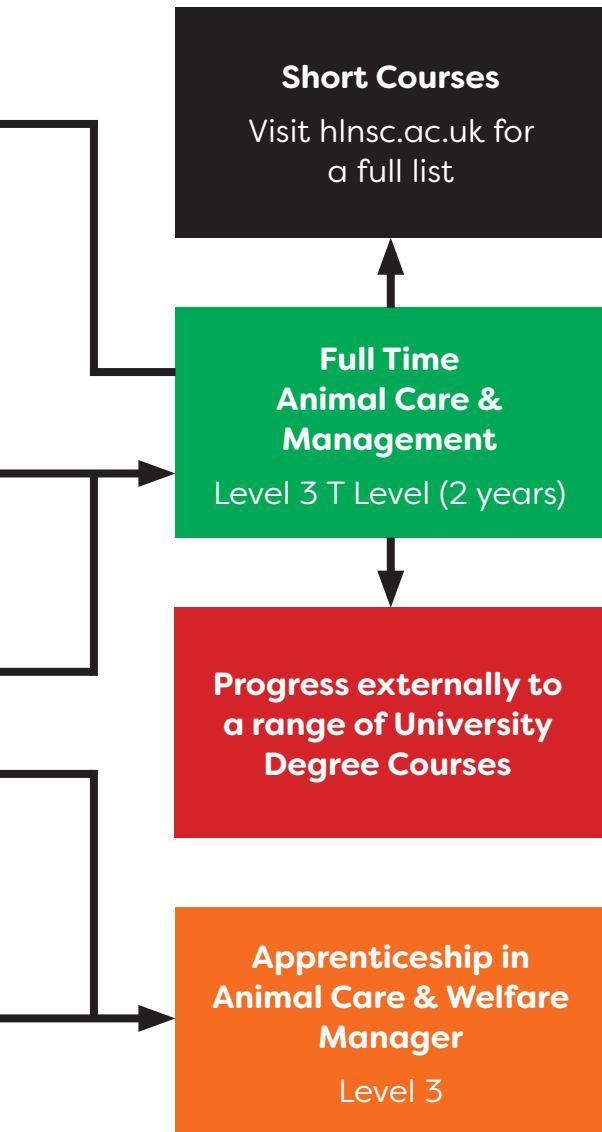
A minimum of four GCSEs at grade 2, including English and maths or successful completion of a Foundation or Entry Level 3 qualification and good progress with English and maths.

Level 2 Course

A minimum of four GCSEs at grade 3, including science, English and maths or successful completion of a relevant Level 1 qualification. Students without grades 9-4 in GCSE English and maths must demonstrate good attendance to English and maths lessons and must attend all GCSE exams.

Level 3 Course

A minimum of five GCSEs at grade 4, including science, English and maths or successful completion of a relevant Level 2 qualification at merit grade. Students without grades 9-4 in GCSE English and maths must demonstrate good attendance to English and maths lessons and must attend all GCSE exams.





Level 2

1 Year

Animal Care

Learn the professional skills necessary to understand the behaviours and enhance welfare of a broad collection of animals, from domestic pets to exotic birds and reptiles. Learning will be through a combination of classroom-based and practical workshops, utilising the fully equipped animal care unit. There will be more opportunities to visit animal care organisations, including small businesses, The Cotswolds Wildlife Park and Crufts. Students will also have guest speakers throughout the year linking to their course units as well as complete 150 hours of industry relevant work experience alongside their course.

Why choose us

This course develops your skills, confidence and knowledge in a friendly and welcoming environment. You will have access to a range of specialist resources including our fully equipped animal unit which houses over 200 animals including mammals, reptiles, birds, fish, amphibians, and invertebrates. Students will also have access to our farm and brand new equestrian centre. If you want to be part of the next generation of animal care specialists, this is the course for you!

What you could do next

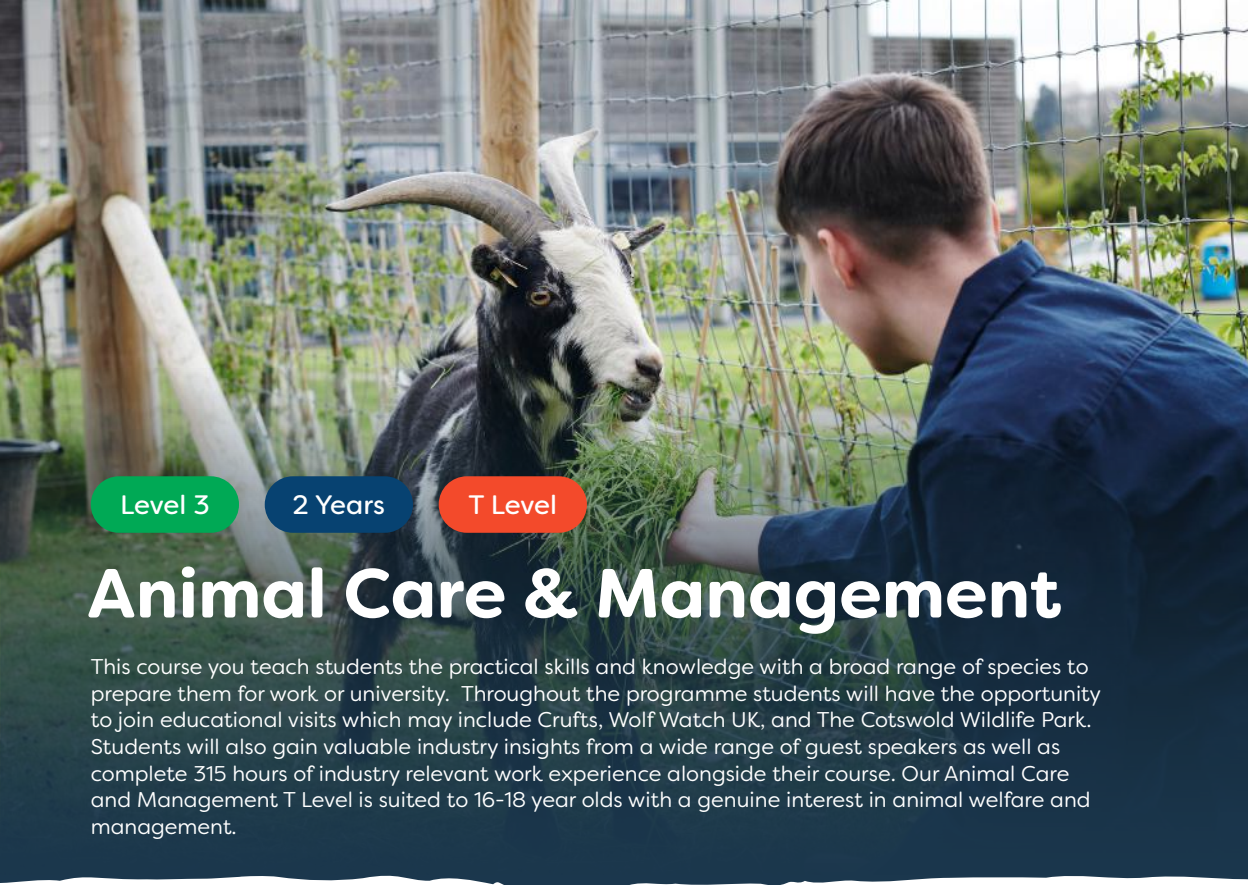
Progression routes may include Level 3 Animal Management or Animal Care Apprenticeship.

Employment options may include kennels or catteries, animal sanctuaries, pet shops, doggy day care centres, zoo and farm parks.

Popular modules

- Animal feeding and accommodation
- Animal behaviour and handling
- Animal nursing
- Maintain health and welfare

Discover more
at.hnsc.ac.uk



Level 3

2 Years

T Level

Animal Care & Management

This course you teach students the practical skills and knowledge with a broad range of species to prepare them for work or university. Throughout the programme students will have the opportunity to join educational visits which may include Crufts, Wolf Watch UK, and The Cotswold Wildlife Park. Students will also gain valuable industry insights from a wide range of guest speakers as well as complete 315 hours of industry relevant work experience alongside their course. Our Animal Care and Management T Level is suited to 16-18 year olds with a genuine interest in animal welfare and management.

Why choose us

This course develops your skills, confidence and knowledge in a friendly and welcoming environment. You will have access to a range of specialist resources including our fully equipped animal unit which houses over 200 animals including mammals, reptiles, birds, fish, amphibians, and invertebrates. Valuable educational trips and guest speakers enhance your learning experience including Longleat Conservation Conference and optional conservation based residential trip abroad.

What you could do next

Progression routes may include degree courses like Animal Behaviour & Welfare, Zoology and Ecology & Conservation.

Employment options may include lab technician, zoo keeper or wildlife conservationist, animal behaviourist, animal training specialist, pet shop supervisor, RSPCA inspector or trainee veterinary nurse.



This qualification is the equivalent of up to 168 UCAS Points.

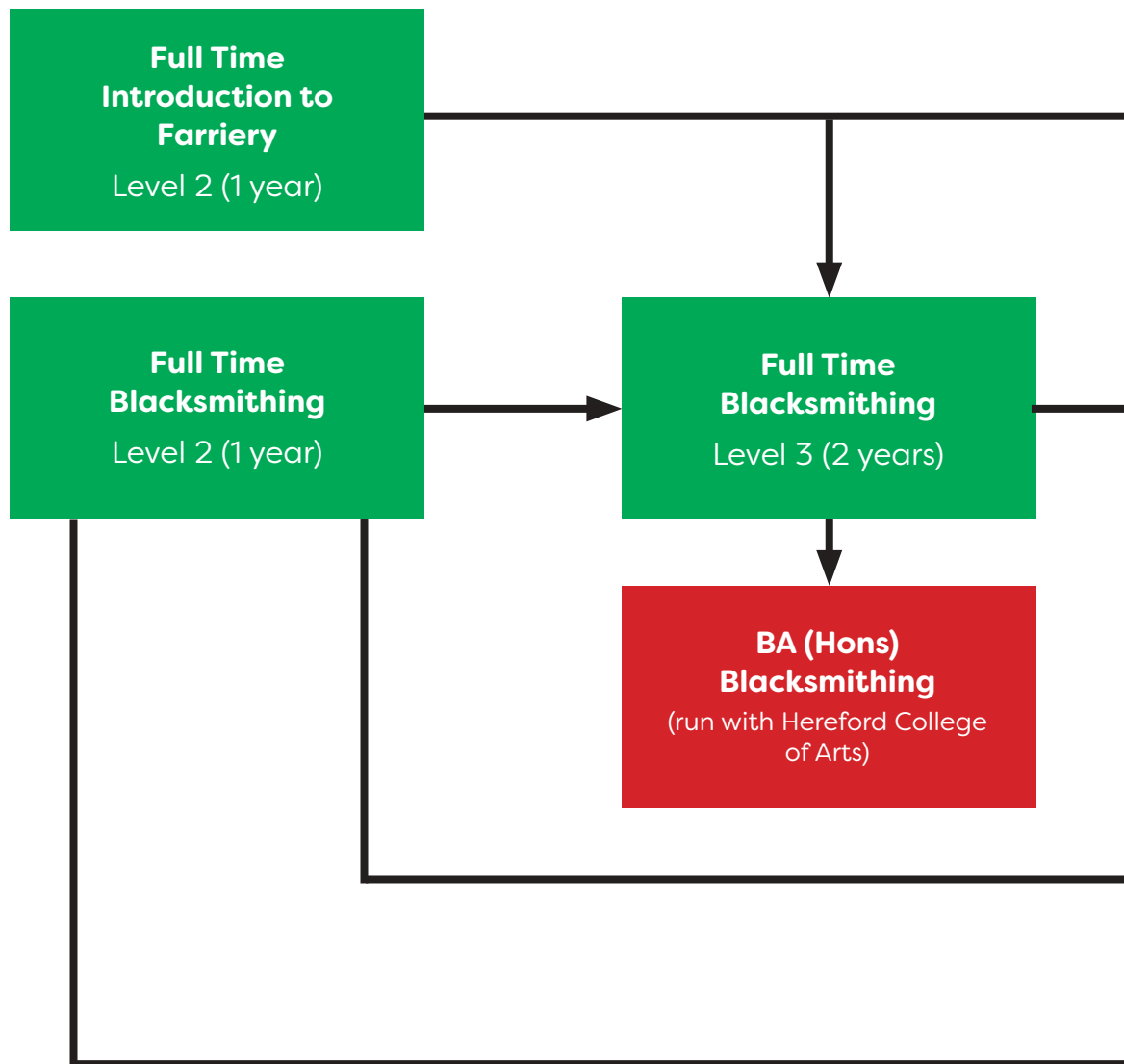
Popular modules

- Animal feeding and accommodation
- Animal behaviour and handling
- Animal nursing
- Maintain health and welfare
- Conservation and ecology

Discover more
at hlnc.ac.uk

Blacksmithing & Farriery

Progression Map



Course Entry Requirements

The information below outlines the minimum entry requirements for the different types of courses we offer.

Apprenticeship in Farriery
Level 3 (4 years)

Short Courses
Visit hlnc.ac.uk for a full list

Progress externally to Apprenticeship in Blacksmithing
Level 3 (4 years)

Level 2 Course

A minimum of four GCSEs at grade 3, including science, English and maths or successful completion of a relevant Level 1 qualification. Students without grades 9-4 in GCSE English and maths must demonstrate good attendance to English and maths lessons and must attend all GCSE exams.

Level 3 Course

A minimum of five GCSEs at grade 4, including science, English and/or maths or successful completion of a relevant Level 2 qualification at merit grade. Students without grades 9-4 in GCSE English and maths must demonstrate good attendance to English and maths lessons and must attend all GCSE exams.

BA (Hons) (run with Hereford College of Arts)

Minimum of 96 UCAS points from A Levels or relevant Level 3 qualification. Applications should be made through UCAS.

All full-time courses can lead to employment as well as the routes shown.



Level 2

1 Year

Blacksmithing

This course seeks to lay the foundation for a successful career in blacksmithing and comprehensively teaches the technical and theoretical skills that are essential to becoming a competent blacksmith. There is also the opportunity to enter national competitions, one of these being at the Three Counties Showground in Malvern. High-achieving blacksmiths trained at the College are very well regarded by employers and many subsequently trade in their own right. This subject is an excellent choice for a self-motivated and hard-working person who will be expected to have good hand/eye coordination and artistic ability in this exciting and growing industry.

Why choose us

This course is run by the longest established blacksmithing training college in the country, with staff dedicated to providing training for those who wish to work in the various areas of the blacksmithing industry, ranging from traditional to contemporary ironwork, design work and historic conservation and restoration.

What you could do next

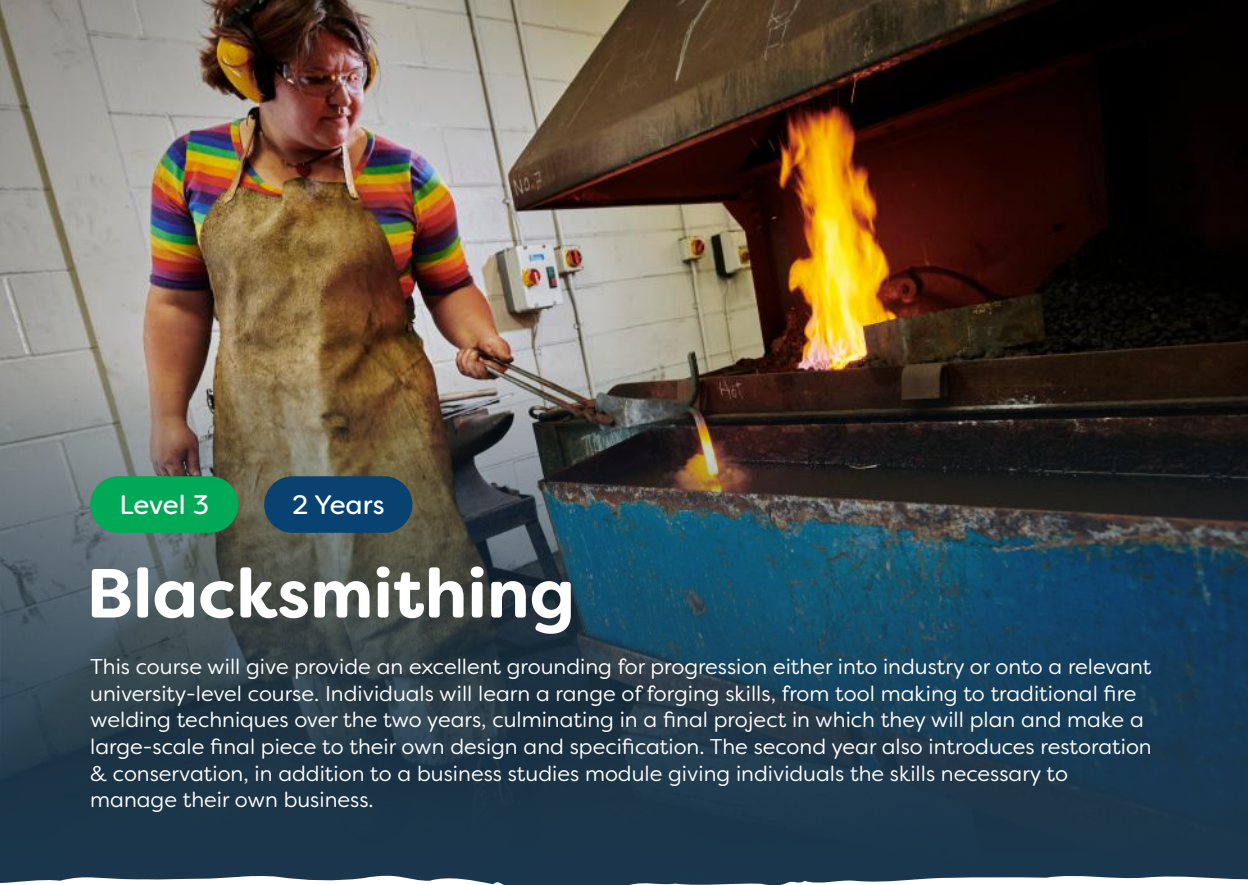
Progression routes may include Level 2 Apprenticeship in Welding, Level 3 Apprenticeship in Blacksmithing, Level 3 Diploma in Blacksmithing and Metalworking.

Employment options may include blacksmith, metal fabrication, welding trades, artist/designer or metalworker.

Popular modules

- Metallurgy and heat treatment
- Forging processes
- Welding and thermal cutting processes
- Freehand and technical drawing

Discover more
[at hnsc.ac.uk](http://at.hnsc.ac.uk)



Level 3

2 Years

Blacksmithing

This course will give provide an excellent grounding for progression either into industry or onto a relevant university-level course. Individuals will learn a range of forging skills, from tool making to traditional fire welding techniques over the two years, culminating in a final project in which they will plan and make a large-scale final piece to their own design and specification. The second year also introduces restoration & conservation, in addition to a business studies module giving individuals the skills necessary to manage their own business.

Why choose us

This course is run by the longest established blacksmithing college in the country, recognised as the national school of blacksmithing by the Worshipful Company of Blacksmiths. You will have the opportunity to build your practical skills in our excellent workshop facilities under the guidance of an experienced team of lecturers from a variety of industry specialisations.

What you could do next

Progression routes may include apprenticeship in Blacksmithing, BA (Hons) Degree in Artist Blacksmithing.

Employment options may include self-employed blacksmithing, employed blacksmithing and metalworking roles in a range of potential fields within the industry, contemporary design or traditional reproduction/ restoration.

Popular modules

- Understanding and using forging techniques for blacksmithing and metalworking
- Blacksmithing and construction skills
- Large scale design and make
- Repoussé, Restoration and Conservation



This qualification is the equivalent of up to 112 UCAS Points.

Discover more
[at hlnc.ac.uk](http://hlnc.ac.uk)



Level 2

1 Year

Introduction to Farriery

This is a preparatory course in forgework and horse care to prepare individuals for entry into the specialist and competitive Level 3 Apprenticeship in Farriery. It includes both the City and Guilds Level 2 Technical Diploma in Horse Care and a bespoke forging certificate. The course provides an introduction of equine and farriery knowledge with a main element being the practical forging skills to prepare individuals for an apprenticeship in farriery. This course offers the expertise of our highly qualified farriery and equine tutors. To gain farriery experience, individuals will undertake a period of work experience with a qualified farrier, which will help reinforce their awareness of farriery as a career.

Why choose us

Students will learn the professional responsibilities of the farriery trade and the role of the modern farrier within the equine industry. They will learn and practise essential forging skills in readiness to start a farriery apprenticeship.

What you could do next

Progression routes may include Apprenticeship in Farriery and Level 3 in Horse Management.

Employment options may include farriery apprenticeship, blacksmithing (and related metalworking) or equine-based employment.

Popular modules

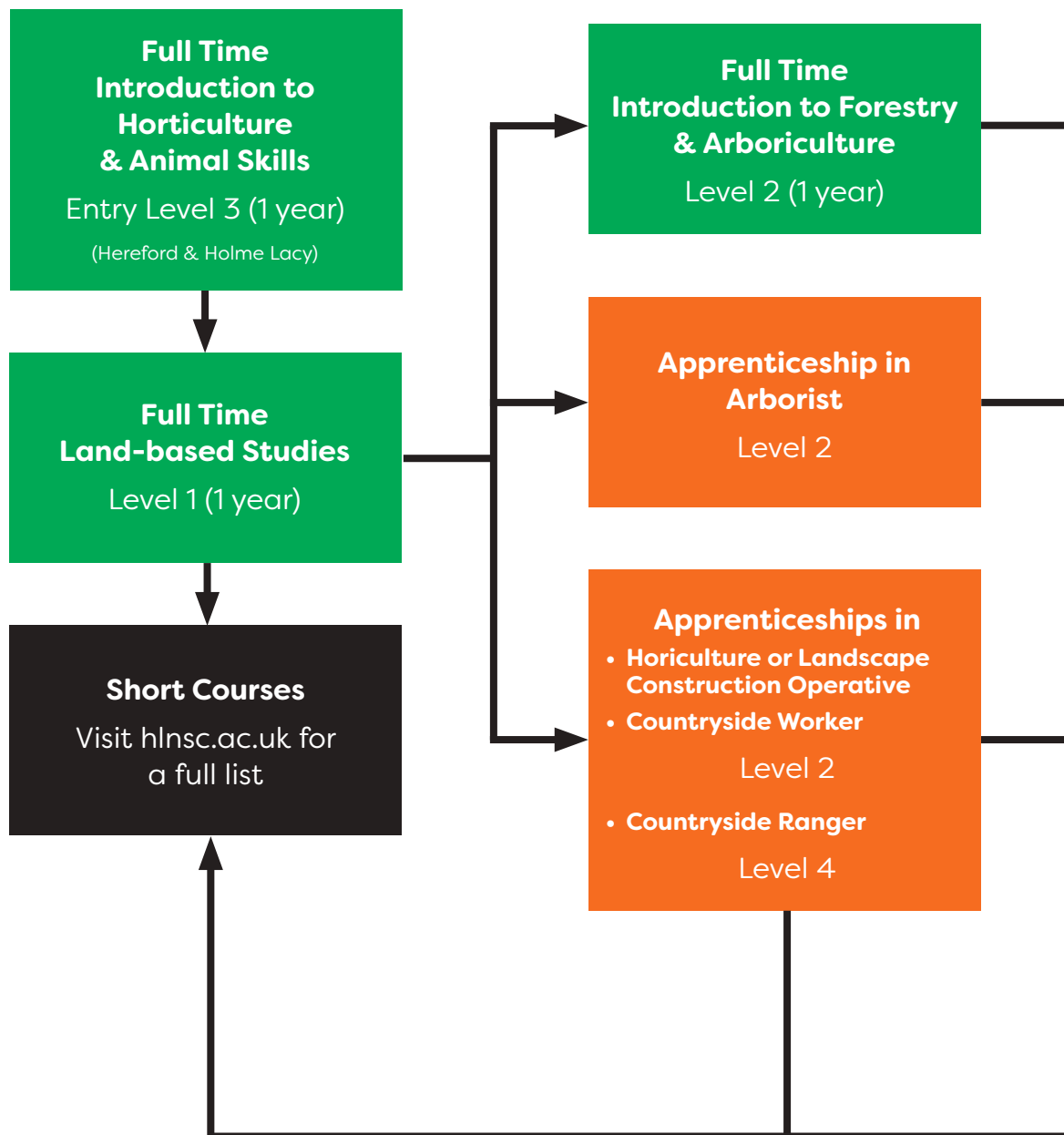
- Blacksmithing - forging, forming, cutting, joining and tool production
- Equine studies - equine health, feeding and watering
- Horse anatomy

Discover more
[at hnsc.ac.uk](http://at.hnsc.ac.uk)



Forestry & Arboriculture

Progression Map



Course Entry Requirements

The information below outlines the minimum entry requirements for the different types of courses we offer.

Entry Level 3 Course

No formal entry requirements.

Level 1 Course

A minimum of four GCSEs at grade 2, including English and maths or successful completion of a Foundation or Entry Level 3 qualification and good progress with English and maths.

Level 2 Course

A minimum of four GCSEs at grade 3, including science, English and maths or successful completion of a relevant Level 1 qualification. Students without grades 9-4 in GCSE English and maths must demonstrate good attendance to English and maths lessons and must attend all GCSE exams.

```
graph BT; A[Apprenticeship in Forest Craftsperson Level 3] --> B[Progress externally to a range of University Degree Courses];
```

**Progress externally to
a range of University
Degree Courses**

```
graph BT; A[Apprenticeship in Forest Craftsperson Level 3] --> B[Progress externally to a range of University Degree Courses];
```

**Apprenticeship in
Forest Craftsperson**
Level 3

All full-time courses can lead to employment as well as the routes shown.



Level 2

1 Year

Introduction to Forestry & Arboriculture

This course is designed for those who are wanting to start a career within the forestry and arboriculture sector. Modern forestry and arboriculture practices involve far more than just growing trees for timber. There are numerous career options depending on individual interests and goals, which range from managing large forests to managing trees for amenity and urban landscapes.

You will gain an understanding of the skills and knowledge that are important when you are working in a tree work setting and will enable you to progress onto either a Forestry Apprenticeship or an Arborist Apprenticeship.

Why choose us

All training needs can be met right here at Holme Lacy College and delivered by industry experts. You will benefit from working on our stunning 224 hectare estate including parkland, working woodlands and organic farm.

What you could do next

Progression routes may include Level 2 Arborist Apprenticeship or Level 3 Forestry Craftsperson Apprenticeship.

Employment options may include forest/woodland worker in public or private sectors, grounds and estate maintenance or tree nursery worker.

Popular modules

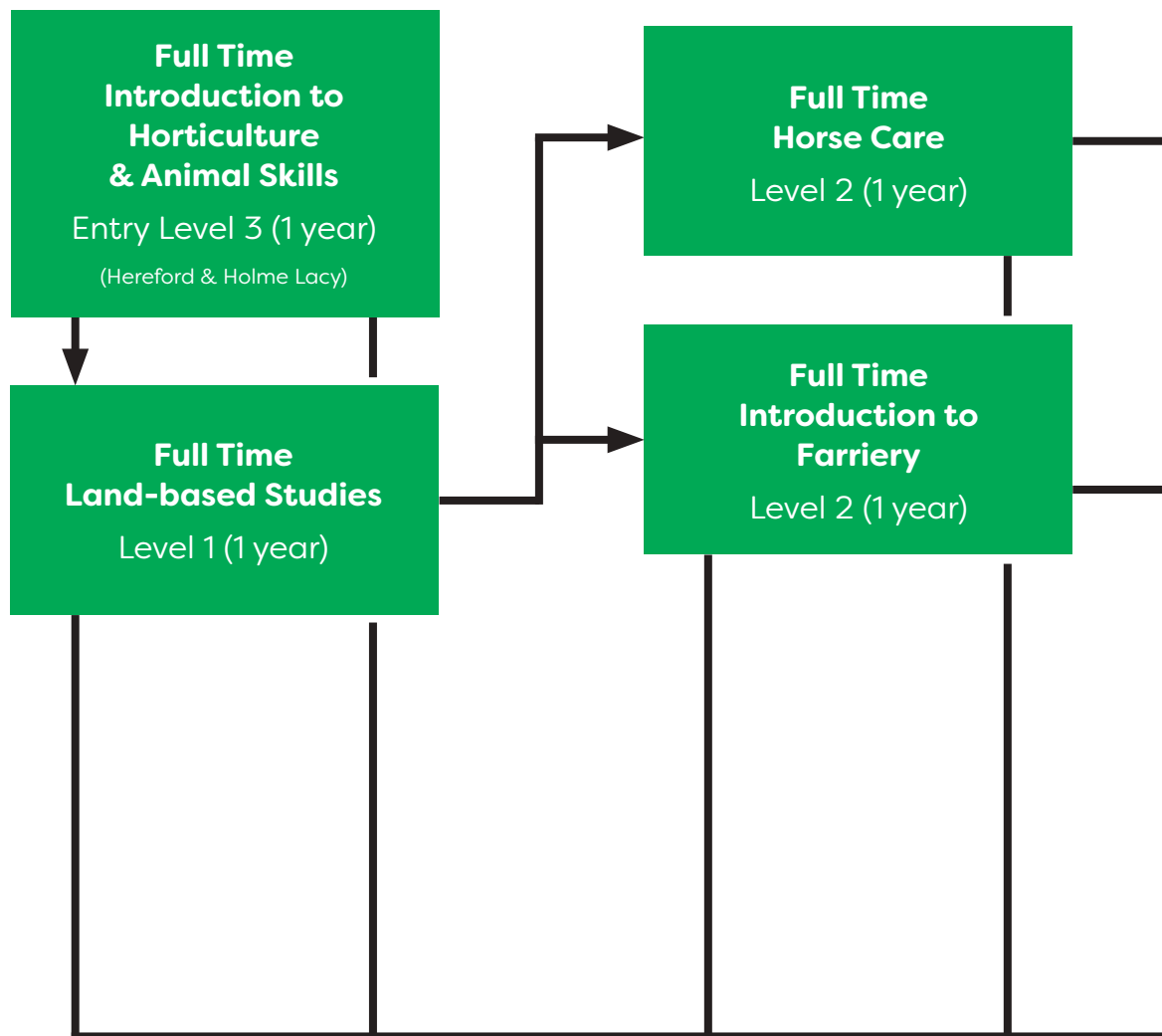
- Tools and equipment
- Environment and conservation
- Introduction to plant science
- Tree classification and identification
- Tree establishment
- Tree and woodland management

Discover more
at hlnc.ac.uk



Horse Care & Management

Progression Map



Course Entry Requirements

The information below outlines the minimum entry requirements for the different types of courses we offer.

Entry Level 3 Course

No formal entry requirements.

Level 1 Course

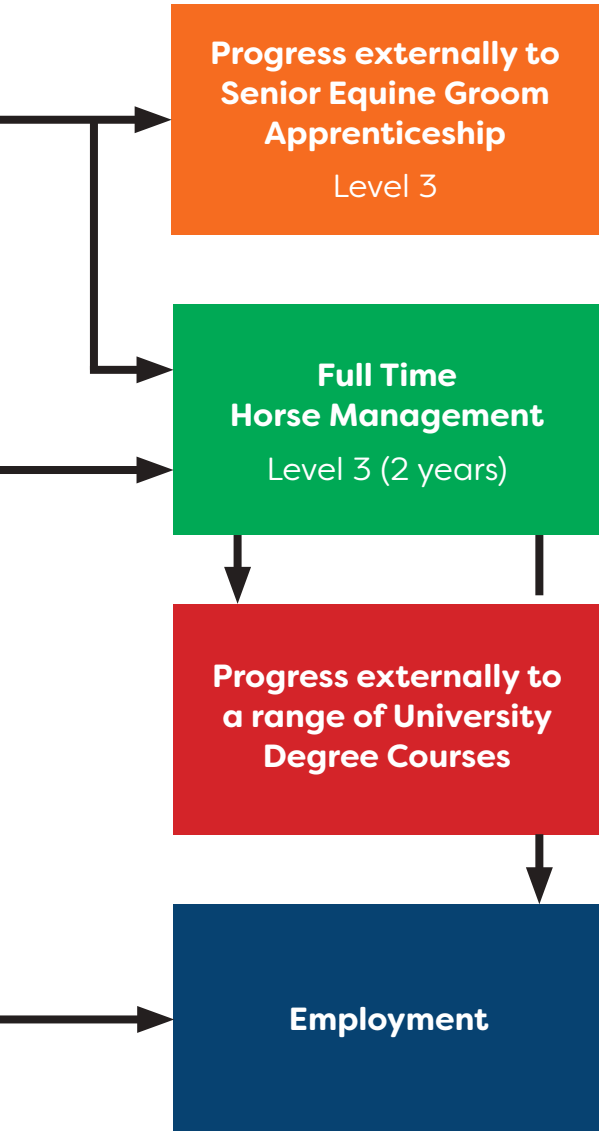
A minimum of four GCSEs at grade 2, including English and maths or successful completion of a Foundation or Entry Level 3 qualification.

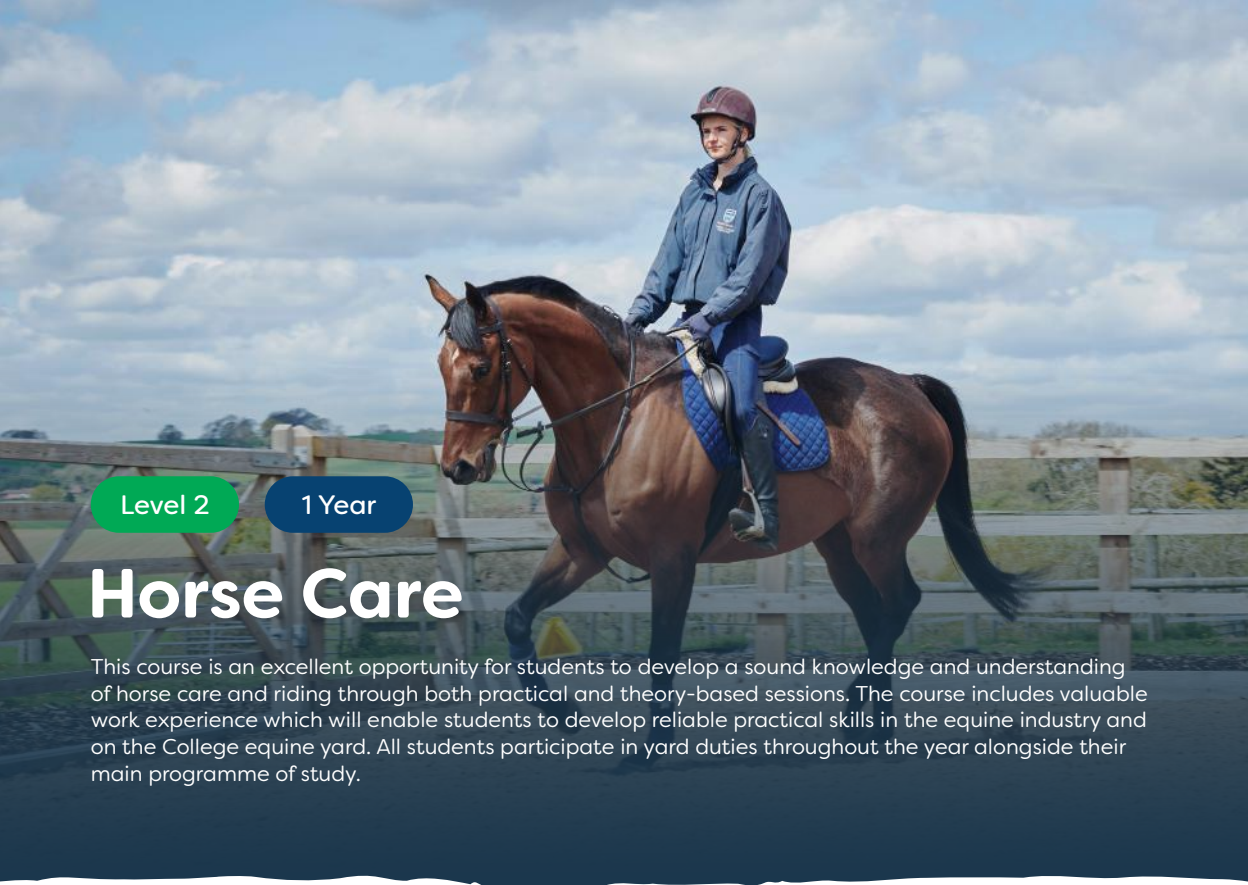
Level 2 Course

A minimum of four GCSEs at grade 3, including science, English and maths or successful completion of a relevant Level 1 qualification at merit or above. Students without grades 9-4 in GCSE English and maths must demonstrate good attendance to English and maths lessons and must attend all GCSE exams.

Level 3 Course

A minimum of five GCSEs at grade 4, including English and maths or successful completion of a relevant Level 2 qualification at merit grade. Students without grades 9-4 in GCSE English and maths must demonstrate good attendance to English and maths lessons and must attend all GCSE exams.





Level 2

1 Year

Horse Care

This course is an excellent opportunity for students to develop a sound knowledge and understanding of horse care and riding through both practical and theory-based sessions. The course includes valuable work experience which will enable students to develop reliable practical skills in the equine industry and on the College equine yard. All students participate in yard duties throughout the year alongside their main programme of study.

Why choose us

Previous students have taken part in many different visits, including to the Horse of the Year Show and Badminton Horse Trials, as well as visiting various equine establishments such as racing, polo, dressage yards and natural horsemanship centres. There are also opportunities to gain additional qualifications such as Emergency First Aid at Work, training for BHS Stage exams and the BHS Riding and Road Safety. You will have the opportunity, if you wish, to compete on College horses.

What you could do next

Progression routes may include Level 3 in Horse Management.

Employment options may include competition groom, riding schools and livery yards, competition yards, racing industry or equine retail industry.

Popular modules

- Equine health and welfare
- Working in the equine industry
- Horse tack and equipment
- Horse biology

Discover more
[at hnsc.ac.uk](http://at.hnsc.ac.uk)



Level 3

2 Years

Horse Management

This course teaches students how to care for horses up to competition level and provides the opportunity to work at our commercial riding school. Students will gain an in-depth knowledge of the industry and its disciplines, as well as the biology, behaviour and welfare of the horse. We aim to provide the best possible vocational experience for students, as well as developing their learning and understanding of the equine industry. All full-time students participate in yard duties throughout the year alongside their main programme of study.

Why choose us

The newly constructed riding arena and established cross-country course will help you to progress your riding with us, along with our wide range of horses and fully qualified instructors. The experienced equine staff are also on hand to enhance your learning in the classroom and during the practical sessions on the yard, enabling you to make the most of your studies and progress within the industry, or to higher education. You will also have the opportunity to organise and run your own equine show, as well as the chance to visit equine events.

What you could do next

Progression routes may include Degree in Equine Science/ Studies.

Employment options may include riding instructors, nutritionist, equine veterinary nurse, bloodstock agent.

Popular modules

- Horse fitness
- Competition grooming
- Equine health
- Equine nutrition

Discover more
at hlnc.ac.uk



This qualification is the equivalent of up to 168 UCAS Points.



Learning Resource Centre

Our College has its own fully equipped Learning Resource Centre which combines traditional library services, teaching space and IT facilities. This has undergone a £500,000 renovation to completely transform the building into a modern and dynamic centre for students to enjoy.

The Learning Resource Centre is also where you will find The Straw Bale Cafe, offering an airy contemporary social space with both inside and outside seating areas along with table tennis facilities outside for the students to enjoy.

Student Services situated within the Learning Resource Centre is the Central Hub for all student enquiries, including information on courses, UCAS applications, finance and bursary queries or anything else a student may need assistance with.

If you would like to chat to our friendly Student Services team, call **0800 032 1986** or email **enquiries@hlnc.ac.uk**









The Straw Bale Cafe

A welcoming atmosphere where you can take a break from your studies. With comfortable seating and a friendly ambiance, it's the perfect place to catch up with friends, work on group projects, or simply relax.

You will find a variety of freshly prepared food and drinks to satisfy your cravings. Whether you're in the mood for a hearty sandwich, a refreshing salad, or a steaming cup of fresh coffee, the menu has something for everyone. Students are welcome to bring their own food from home, ensuring that everyone can enjoy a meal that suits their taste and dietary needs.

Come and experience the friendly service and inviting contemporary space that makes the Straw Bale Café a central part of Holme Lacy College life.



Pound Farm

An organic mixed farm, set within 224 hectares of land. The Farm comprises approximately of 43.5 hectares of permanent pasture or long-term leys, including the partly wooded Deer Park, 5.5 hectares of cider apple orchards and 106 hectares of land suitable for arable/vegetable cropping.

The Farm boasts a pedigree herd of Hereford cattle and a large flock of Lleyen sheep. Crops produced on the Farm include potatoes, wheat, oats, pea and barley mix, beans and cider apples.

Pound Farm is committed to producing quality food. The oats grown are supplied to Whites who then turn these into porridge oats and muesli bars. The cider apples go to Westons Cider and the Farm supplies crops to Abel and Cole, a large retail veg-box scheme and local shops.

Rural Crafts Centre

This £1.5 million, state-of-the-art development is home to the National School of Blacksmithing, as well as our Farriery, Metalwork and Welding courses.

Holme Lacy College has long had an excellent reputation for its blacksmithing and farriery work. Trainees are recruited on a national basis and close relationships have been developed with the Worshipful Company of Blacksmiths, British Artists Blacksmiths Association and the Worshipful Company of Farriers.

The Centre at-a-glance:

- Largest training based forge in Europe
- Well-equipped Fabrication and Welding workshop for MIG, TIG, GAS and ARC welding
- Demonstration forge
- Over 1900 square metres of work area

Low Carbon Technology Training Centre

Our cutting-edge training facility dedicated to renewable technology. Nestled within the scenic surroundings of Holme Lacy College, this state-of-the-art centre is set to make a significant impact in advancing the adoption of sustainable energy solutions in our region.

Our courses:

- Solar PV
- Heat Pumps
- Water Regulations
- Domestic Hot Water Storage Systems
- Battery Storage Systems
- Low Temperature Hot Water Heating Systems
- Building Regulations

Contact us

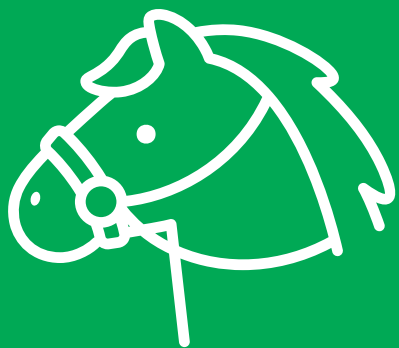
01432 870061

lcctc@hlnsc.ac.uk









Equestrian Centre

We are a British Horse Society Approved Riding School, which offers both excellent riding facilities and high quality education.

Hacking is set within the College's magnificent 600 acre estate through woodlands, open fields and grass paths with some optional jumps. There is a cross-country course and an outdoor area with an all weather surface and an indoor arena with viewing gallery.

Recent investment has provided 16 new bespoke timber stables as well as welfare facilities, a wash bay, solarium, tack and rug rooms and extensive storage and locker facilities.

Apprenticeships

Earn & Learn.

Apprenticeships are a great way to earn a wage and gain a nationally recognised qualification through a mix of full-time working and training in college. HLNSC offer apprenticeships in a wide range of industries, including:

- Accountancy
- Agriculture
- Animal Care
- Business Management
- Childcare
- Construction and Building Services
- Engineering and Welding
- Equine
- Farriery
- Forestry and Arboriculture
- Hairdressing and Barbering
- Health and Social Care
- Hospitality and Catering
- Motor Vehicle


If you would like to chat to our friendly Apprenticeships team, call 01432 365322 or email apprenticeships@hlnc.ac.uk





Discover more
at hlnsc.ac.uk





I found the extra qualifications and in-house certificates very beneficial and this has helped put me into a position where I can enter straight into the industry. I look forward to moving on to the next level of this apprenticeship where I will become a fully qualified climber, which will support the route to my dream career in the forestry industry.

Meet Ben.

**Level 3 Forestry
Apprenticeship**





We're
here to
HELP.



Find out
more on our
website.



Student Services

Student Services is a place where you can get all the help and information you need throughout your time at the College.

The Student Services team will provide you with additional support and information to help with any worries or difficulties you have which are affecting your time at college including:

- Mental health and wellbeing
- Safeguarding
- Financial support
- Bursary forms and student funding
- Learning support and accessibility
- Careers advice
- Transport
- Sexual health information

Student Voice

Student Voice surveys take place once a year and are an important part of the College's development. After each Student Voice Survey the College is able to make significant changes. You can get involved in a variety of ways; provide your views via a questionnaire, elect or become a Student Course Representative that will attend briefings and a focus group each year and/or become a Student Governor and be part of the College Board of Governors.



We're here for **YOU.**

We believe you learn the best when you are in a healthy, safe and secure environment. Our Safeguarding team offer guidance and support on various concerns encompassing physical and mental health, welfare, financial anxieties and personal matters.

Safeguarding means:

- Promotion of your health and development
- Ensuring your safety and care
- Ensuring you are offered the best life chances
- Protection from abuse and neglect
- Prevention of bullying and harassment
- Prevention of terrorism and extremism





Safeguarding and Support

If you have any concerns about your well-being, safety or rights, then you should contact your Tutor, Team Leader or any one of our Safeguarding Leads whose details are all shown here.



Bev Jackson

Head of Student Services and Designated Safeguarding Lead

E: b.jackson@hlnc.ac.uk



Nicola Butler

Safeguarding and Wellbeing Manager and Deputy DSL

T: 07790 833601

E: n.butler@hlnc.ac.uk



Find out
more on our
website.

Safeguarding
Team

Herefordshire, Ludlow & North Shropshire College is committed to providing an inclusive and supportive learning environment for all students, including those with Special Educational Needs and Disabilities (SEND). Our dedicated SEND Support services are designed to ensure that every student has the opportunity to succeed and thrive.

SEND support services

We offer a range of tailored support options to meet the individual needs of our students with SEND, including:

- **Individualised Learning Plans:** Personalised plans that address students specific learning needs and outline the support strategies and accommodation that will help them to succeed.
- **Specialist Support Staff:** Access to experienced SEND Coordinators, Student Support Assistants, and experienced tutors who are trained to provide the necessary assistance and guidance.
- **Assistive Technology:** Availability of assistive technologies and resources, such as text-to-speech software, adapted keyboards, and other tools to facilitate learning.
- **Reasonable Adjustments:** Implementation of reasonable adjustments to the learning environment, teaching methods, and assessment procedures to ensure equal access to education.

- **Small Group and One-on-One Support:** Opportunities for additional support in small groups or one-on-one sessions to provide focused help and reinforce learning.
- **Inclusive Learning Environment:** A commitment to creating an inclusive college culture where diversity is celebrated, and all students feel valued and supported.

If you feel your young person could do with more help or support at college, please get in touch with our SEND team and we can have a chat about what we can offer. In the first instance, please contact our Head of SEND for Student Support.





Education Health Care Plan

If you have an Education Health Care Plan, please let us know so we can work with you to make sure we have the right support in place for you.

We will work with the Local Authority to make sure we can provide the right support for your needs and then secure funding so we can put this in place. Without this funding, you may not be able to access a specific level of support. Transition support will be available for all EHCP students.

Our Student Support team will then ensure you have the right support in place when you start and throughout your studies and will co-ordinate annual EHCP reviews.

Transition to college life

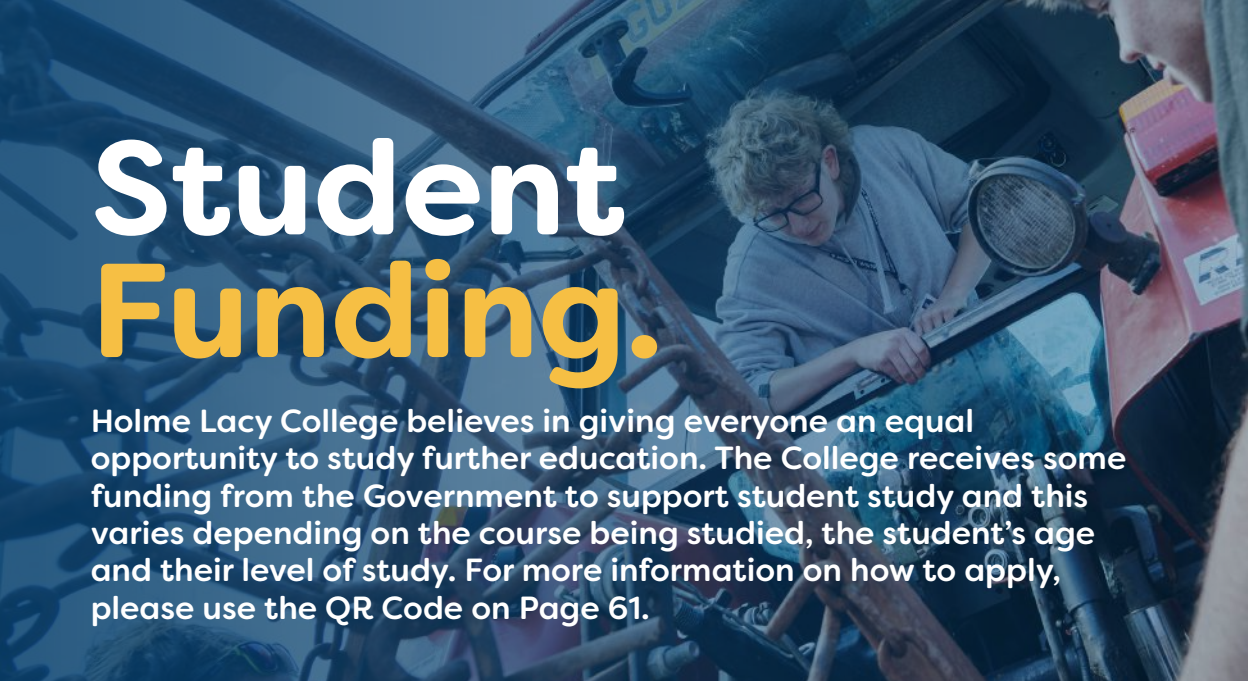
Preparing for adulthood and starting at Holme Lacy College might be a bit of a worry, so in addition to our usual open events, you can request a guided tour to come and look around the College campus and ask any questions you may have about the College.



Bridget Snasdell

Head of SEND for Student Support

T: 01432 365327 E: b.snasdell@hlnc.ac.uk

A student with glasses and a grey hoodie is working on the engine of a car. The car is red and has a large headlight. The student is looking down at the engine, which is open. The background is a blurred view of the car's interior and exterior.

Student Funding.

Holme Lacy College believes in giving everyone an equal opportunity to study further education. The College receives some funding from the Government to support student study and this varies depending on the course being studied, the student's age and their level of study. For more information on how to apply, please use the QR Code on Page 61.

Under 19?

No tuition fees! If you enrol on a further education full-time course before your 19th birthday or are continuing to attend a course before turning 19, there are no tuition or examination fees.

However, some courses may charge additional course costs to cover equipment, specialist clothing, etc.

Over 19?

Tuition fees will vary. But you may be eligible for free tuition. As everyone has individual circumstances the best way to work out the fees relevant to you is to call and speak to us.

Looking to study Level 3, 4, 5 or 6?

Advanced Learner Loans from the UK government can cover your course fees providing your course qualifies.

Transport

If you are aged between 16 and 18 you may be eligible to purchase a travel pass through the local council. If you live outside the county, contact your local county council for more information.

If you require assistance with public transport or advice on routes available in Herefordshire, visit our website hlnc.ac.uk

Totum Discount Card

TOTUM Cards can be purchased online and allow students to receive discounts from a wide range of different stores.

For more information visit totum.com or speak to a member of staff in the LRC.



Discover more
at hlnsc.ac.uk



If you would like to chat to our friendly
Enquiries team, call 0800 032 1986 or
email enquiries@hlnsc.ac.uk





Discover more
at hlnsc.ac.uk

Student Enrichment

at Holme Lacy College.



Your chance to get involved in a wide range of activities.

Our Student Enrichment Team are here to help support you through your college experience. The Team organise a wide variety of interesting talks and relevant events throughout the year, as well as lunch time clubs.

To get involved please contact:

Student Services

T: 0800 032 1986

E: studentservices@hlnc.ac.uk



Discover more
at hlnsc.ac.uk

Planning My Future.

You might already know what you want to do when you leave college or you might not. Either way we have a dedicated Student Progression Advisor to assist you.



Careers advice & UCAS points

Student Services is there to support and guide you on your progression. This could be about what you will study next at college or in the future. We can help you with your UCAS application process and give you tips on how to create an effective personal statement.

Can I study university-level courses?

Yes, at Herefordshire College you can study a wide range of university-level courses at the College and this enables you to save money by studying locally. Many courses are run in partnership with the University of Worcester and others have long running relationships with industry specific institutions.

Higher & degree apprenticeships

Higher and degree apprenticeships involve the development and assessment of skills and knowledge at Level 4 or above (relevant to the occupational sector or job role), and as defined by the Standard. Higher apprenticeships at Level 4 and 5 can allow progression on to university degrees and degree apprenticeships are also now becoming widely available in most sectors.



Hereford University Centre.

What is Hereford University Centre?

In partnership with the University of Worcester, the Centre acts as an educational and cultural hub, aiming to encourage increased participation in higher education.

How can it help me?

At the core of the Centre is the Student Services Manager who facilitates a range of talks, lectures and activities aimed at involving the community at the College.

Though these will all be on varied subjects, they offer you the opportunity to get a feel for what university lectures might be like and how you can be inspired by the expansion of ideas and theories. The Centre is also a good first point of contact for anyone with questions and queries about higher education.

For visitors to the Hereford University Centre, the Campus provides the ideal environment to explore the prospect of higher education and experience what university-level study could be like.



**Find out
more on our
website.**



HEREFORD UNIVERSITY CENTRE



UNIVERSITY *of*
WORCESTER



Herefordshire,
Ludlow & North
Shropshire College

**Raising Educational
Aspirations in Herefordshire**



Pound Farm

Based within Holme Lacy College, Pound Farm has enjoyed organic farm status for over 23 years. The farm produces potatoes, wheat, oats, pea and barley mix, beans and cider apples as well as Hereford cattle and Lleyn sheep. Our wonderful, fresh produce supplies local businesses including Westons, ABP, Abel & Cole and Dovecote who then supply supermarket giants such as Aldi and Waitrose.

The farm is involved with environmental schemes, including Countryside Stewardship and Higher Level Stewardship. These schemes enhance our production and operations, adding value to our produce and boosting profits. The money made by the farm gets invested back into the development of Home Lacy College, improving facilities and the experience for our students.



Daniel Seaborne

Farm Manager

I have spent my whole life in farming, I grew up on a farm and I've been at Pound Farm for the last 30 years, 26 as Farm Manager. My day-to-day activities are rarely the same because my tasks vary with the seasons. Winter involves feeding the housed cattle, bagging potatoes for orders and moving sheep for winter grazing. Spring centres around planting cereals and potatoes. Our cows calf from the 25th of March and our ewes lamb from the 20th of April. In summer, we focus on making silage and hay for winter feeding and moving and worming the new lambs. In autumn, we harvest the cereals, potatoes and apples and then plant the cereals again in October. In November, we house the cattle to rest the fields.

The best thing about being organic is that you're more in control, your decisions matter more, for good or bad. It's all about looking after the soil, improving organic matter and "leaving the land in good condition".



Our 5 Colleges.

With more than 300 routes to choose from, including A Levels, T Levels, vocational programmes, apprenticeships and higher education courses, you will have the very best opportunity to succeed. You will be supported throughout your learning by our highly qualified and professional team of lecturers, tutors and support staff.

1 Herefordshire College

Our College is home to a wide range of facilities including:

- Cider Orchard restaurant
- Construction workshops
- Hair & beauty salon
- Fully equipped gym
- Music studios

2 Holme Lacy College

Our College is home to a wide range of facilities including:

- Animal care centre
- Equestrian centre
- Hereford School of Farriery
- Mixed organic farm
- National School of Blacksmithing

3 Ludlow Sixth Form College

Our College is home to a wide range of facilities including:

- Art studio with gallery space
- Photography darkroom
- Drama studio
- Fully-equipped science labs
- Sports hall & gym

4 Walford College

Located in Baschurch, our College is home to:

- 220 hectare training farm
- Animal care centre
- Equestrian centre
- Motor vehicle workshops

5 North Shropshire College

Located in Oswestry, our College is home to:

- Hair & beauty salon
- Scholars restaurant
- Plumbing & electrical workshops
- Science lab



North Shropshire
College



Walford
College



Ludlow Sixth Form
College



Holme Lacy
College



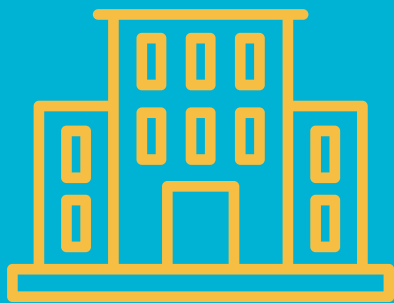
Herefordshire
College





Discover more
at hlinsc.ac.uk

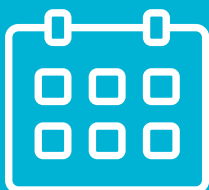
Vocational Courses at Herefordshire College.



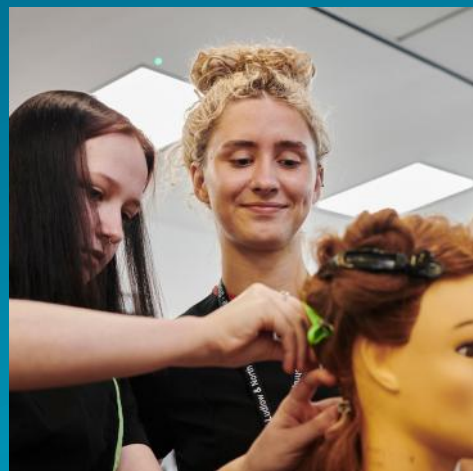
Specialist environments and the latest industry standard equipment.

We offer courses in a broad range of vocational subject areas, as well as T Levels, Apprenticeships and Higher Education courses giving you the very best opportunity to succeed. You will be supported throughout your learning by our highly qualified and professional team of tutors and support staff.

Our facilities include engineering workshops, construction centre, commercial training salons, professional kitchens, state-of-the-art music recording studios, motor vehicle workshop and purpose-built computer lab.



**Come along
to one of our
open events.**





Discover more
at hlnsc.ac.uk

A Levels at Ludlow Sixth Form College.



Come along
to one of our
open events.



Located in the beautiful market town of Ludlow.

Our College is a fantastic choice for students wishing to study A Levels, with many students going on to achieve outstanding results in Russell Group universities.

Spread across 3 sites (Castle Square, Palmers Hall and Lower Mill Street) students learn in a range of superb buildings which date from the Middle Ages to the 21st century.



We love being Social.

Follow us on social media and take a look into life at Holme Lacy College over the last 12 months.



Facebook
/holmelacycollege



Instagram
@holmelacycollege



TikTok
@hlnc_official



Discover more
at hlnc.ac.uk



Catering student:
College visited Po
Lacy College to lea
Farm produces its
cereals and potato



holmelacycollege



We had the honor of welcoming HRH
The Duke of Edinburgh to Holme Lacy
College where he had a tour around
our facilities by our Princip
Williams



Our Le

holmelacyncollege



s from Herefordshire
und Farm at Holme
arn about how Pound
organic beef, lamb,
es.



holmelacyncollege



Level 3 Blacksmithing students recently embarked on an amazing journey to the Viking Ship Museum in Roskilde, Denmark. Their skills and talents were put to the test.



holmelacyncollege



We welcomed Olivia Towns, professional Grand Prix Dressage coach and social media influencer, to officially open our new stable.



holmelacyncollege



Level 3 Blacksmithing



holmelacyncollege



Your future starts at:

hlnc.ac.uk

Open Events.

Saturday 8th November 2025

10:00am - 12:00pm

Wednesday 14th January 2026

5:00pm - 7:00pm

Tuesday 3rd March 2026

5:00pm - 7:00pm

Holme Lacy College

Holme Lacy, Hereford
HR2 6LL

0800 032 1986

enquiries@hlnc.ac.uk



Holme Lacy
College

