

# Enrichment analysis of orange flavor component - Using MonoTrap Simple Enrichment Tools

MonoTrap RGC18TD, a simple enrichment tool was used to screen and analyze peeled orange flavor components. MonoTrap RGC18TD is a dedicated heat-desorption cartridge, it is individually packaged in ampoules and does not require conditioning before use.

## Pretreatment procedure

Orange

Place an edible portion  
In a 40 mL vial

### GC Conditions

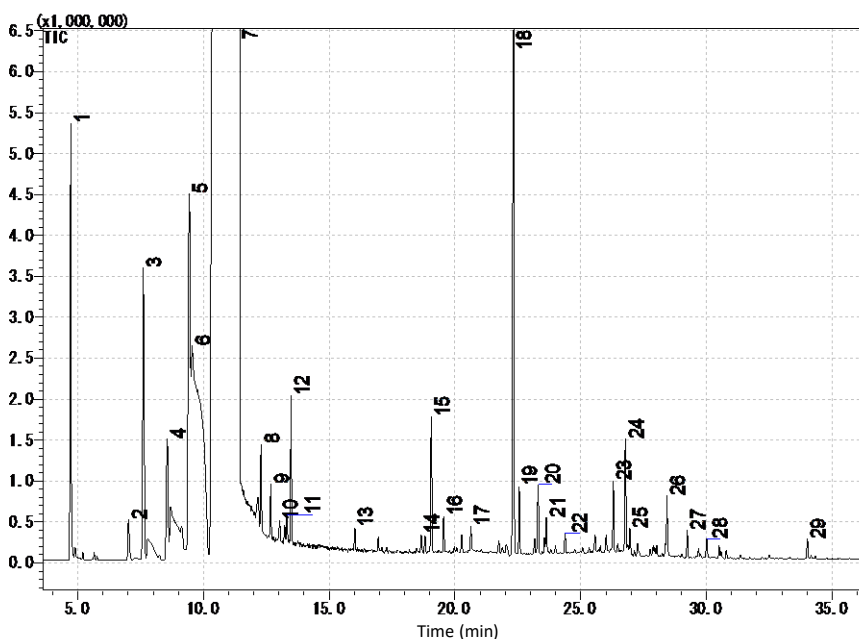
**System** : GC - MS - Thermal Desorption  
**Column** : InertCap Pure-WAX  
0.25 mm I.D. x 30 m, df = 0.25  $\mu$ m  
**Col.Temp.** : 40 °C(5 min) - 4 °C/min - 250 °C  
**Carrier Gas** : He, 1 mL/min (constant flow)

Collection (HS)  
One MonoTrap RGC18TD

At room temperature  
for 4 h

**Desorb Temp.** : 200 °C  
**Time** : 5 min  
**Mode** : Split (Split ratio 5:1)  
**Cryo Trapping** : -150 °C  
**Injection Temp.** : 200 °C  
**Detection** : MS Scan ( $m/z$  : 45-600)

TD/GC/MS



- |                    |  |
|--------------------|--|
| 1. Pinene          | 16. Terpineol                                |
| 2. Pinene          | 17. Decanal                                  |
| 3. Sabinen         | 18. Linalool                                 |
| 4. Carene          | 19. 1-Octanol                                |
| 5. Myrcene         | 20. Caryophyllene                            |
| 6. Myrcene         | 21. Bicyclo[3.3.0]octan-3-one, 7-ethylidene- |
| 7. Limonene        | 22. Mentha-2,8-dienol                        |
| 8. Terpinene       | 23. Terpineol                                |
| 9. Ocimene         | 24. Valencen                                 |
| 10. Cymene         | 25. Carvone                                  |
| 11. Carene         | 26. Citronellol                              |
| 12. Terpinolen     | 27. Geraniol                                 |
| 13. 1-Hexanol      | 28. Carveol                                  |
| 14. Limonene oxide | 29. 2-(4-Methylenecyclohexyl)-2-propen-1-ol  |
| 15. Limonene oxide |  |

\* According to library search results

## Products

### Absorbent

Description : MonoTrap RGC18TD

Cat.No. : 1050-74201

\* Shipped in ample tube.



MonoTrap RGC18TD



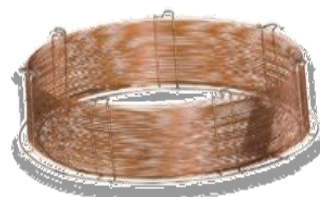
Contents	Cat.No.
<ul style="list-style-type: none"> <li>● MonoTrap TD 10 pcs (Select one from 3 types as below) MonoTrap RSC18 TD, RGC18 TD, RGPS TD</li> <li>● Glass Tube 1 pc ( Select a tube for OPTIC / LINE, or for T-Dex / ATD / TD-20)</li> <li>● MT Holder 1 pc</li> <li>● CLEAN PIN HOLE SEPTUM WITH VIAL 1 pc</li> </ul>	1050-07800

### GC capillary column

Product name : InertCap Pure-WAX

Size :0.25 mm I.D. x 30 m, df = 0.25  $\mu$ m

Cat.No. : 1010-68142



InertCap Pure-WAX

GL Sciences disclaims any and all responsibility for any injury or damage which may be caused by this data directly or indirectly. We reserve the right to amend this information or data at any time and without any prior announcement.

#### GL Sciences, Inc. Japan

22-1 Nishishinjuku 6-Chome  
Shinjuku-ku, Tokyo,  
163-1130, Japan  
Phone: +81-3-5323-6620  
Fax: +81-3-5323-6621  
Email: [world@glsc.co.jp](mailto:world@glsc.co.jp)  
Web: [www.glsciences.com](http://www.glsciences.com)

#### GL Sciences B.V.

De Sleutel 9  
5652 AS Eindhoven  
The Netherlands  
Phone: +31 (0)40 254 95 31  
Email: [info@glsciences.eu](mailto:info@glsciences.eu)  
Web: [www.glsciences.eu](http://www.glsciences.eu)

#### GL Sciences, Inc. USA

4733 Torrance Blvd. Suite 255  
Torrance, CA 90503  
Phone: 310-265-4424  
Fax: 310-265-4425  
Email: [info@glsciencesinc.com](mailto:info@glsciencesinc.com)  
Web: [www.glsciencesinc.com](http://www.glsciencesinc.com)

#### GL Sciences (ShangHai) Ltd.

Tower B, Room 2003,  
Far East International Plaza,  
NO,317 Xianxia Road,  
Changning District.  
Shanghai, China P.C. 200032  
Phone: +86 (0)21-6278-2272  
Email: [contact@glsciences.com.cn](mailto:contact@glsciences.com.cn)  
Web: [www.glsciences.com.cn](http://www.glsciences.com.cn)

#### International Distributors

Visit our Website at [www.glsciences.com/distributors](http://www.glsciences.com/distributors)