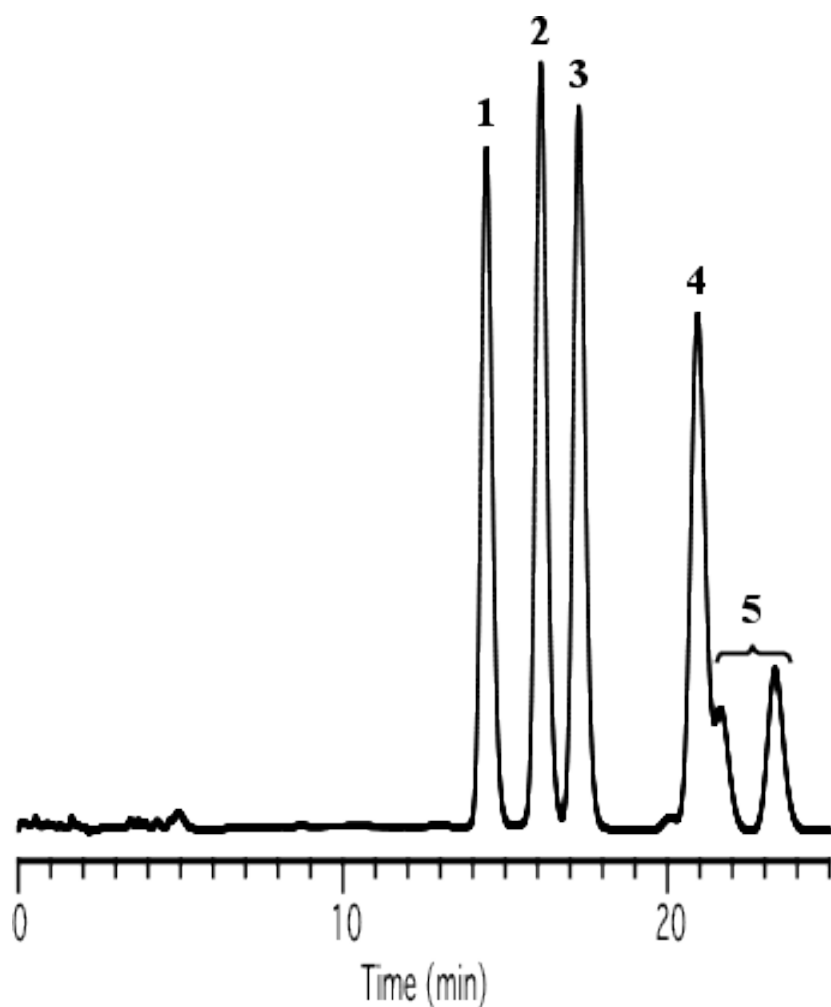


Analysis of Pesticides

Data No. NC524/2222



Column : Inertsil Ph
5 μ m
150 x 4.6 mm I.D.

Column Cat. No. :

Eluent : A) CH₃CN
B) H₂O
A/B = 60/40, v/v

Flow rate : 1.0 mL/min.

Col. Temp. : 40°C

Detection : UV 220 nm

Injection Vol. :

Sample :

Solutes : 1. Flucythrinate
2. Cyhalothrin
3. Deltamethrin
4. Fluvalinate
5. Tralomethrin