

LAUMETRIS

SINCE 1993

PRODUCTION PRICE LIST 2026v01W

(all listed technical details are preliminary)

(Laumetris holds the rights to change any specifications, components, prices at any given time)

DURABILITY AND RELIABILITY IN ONE

Laumetris is one of the biggest agricultural equipment manufacturer in Baltic States, and a multiple winner of international exhibitions.

GIGA BOX 35 MB

10 m³/min

ABOUT COMPANY

For more than 3 decades Laumetris Ltd. has been producing agricultural equipment for soil cultivation, planting, fertilizing & pest control, harvest loading and transportation. 33 years of experience of agricultural innovation and engineering has made a company one of the top industry players in the Baltic region.

Company flagman is back tipping semitrailers with working load up to 40 tons with a strong frame, a rigid body, an optimal wheel base width, a durable spring chassis and wide standard equipment range made product the best-selling item.

Laumetris Ltd. has been recognized for its agriculture equipment:

- soil cultivation and preparation aggregates- levelers, cultivators, harrows, rollers, soil rippers
- high capacity and high flotation semitrailers for transportation of grain, sugar beets, potatoes, peat and green mass
- construction semitrailers with strengthened frame and body for transportation of heavy loads
- water semitrailers and slurry tankers with glass fiber tanks
- platforms for transportation of containers with vegetables, big bags of fertilizers, bales of hay, straw and green mass; platforms with hydraulic lifting chassis
- fiber hemp cutting machines and special semitrailers for fiber hemp transportation
- manure spreaders
- Strip till drills

A part of company portfolio consists of custom made multipurpose semitrailers or only chassis, frames and bodies, depending on customers' needs.



PTL-30F with German "Canagro" screw conveyor

UNIVERSAL SEMITRAILERS

(Laumetris holds the rights to change any specifications, components, prices at any given time)

Model	PTL-10F	PTL-12F	PTL-14F	PTL-16F	PTL-20F	PTL-24F	PTL-30F				
Capacity, m ³	12	14	16	19	25	29	40				
Capacity, t	10	12	14	16	20	24	30				
Chassis type	spring, tandem					spring, tridem					
Bottom / side thickness	4 / 3										
Wheels	550/45-22.5		550/45-22.5 560/45R22.5	560/60R22.5	600/55R26.5	560/60R22.5	600/55R26.5				
Axle dimensions, mm	□90x90		□120x120		□150x150	□120x120	□150x150				
Body's dimensions	5000/2060/	5000/2060/	5000/2060/	6000/2060/	7000/2060/	8000/2060/	8000/2060/				
length/width/height, mm	1060	1460	1610	1610	1810	1800	2555				
Outside dimensions	6900/2500/	6900/2500/	7050/2500/	8000/2510/	9070/2550/	9900/2550/	9900/2550/				
length/width/height, mm	2420	2720	2870	3150	3300	3480	4030				
Mass, kg	3930	4000	4300	5400	6000	8800	9150				
Brakes: pneumatic or hydraulic	400x80			406x120	406x140	406x120	406x140				
Standard colors	frame - grey; body - Claas green / JD green / Red										
Hydraulic tailgate	standard										
Mechanic support foot	standard										
Swivel loop	standard										
LED lights	standard										
Rubber seal for tailgate	standard										
Min. tractor power, HP	90	95	120	130	150	180	240				
BASE PRICE	19080€	20140€	27030€	29360€	35930€	45580€	54060€				
Hydraulic support foot	300€										
Drawbar spring suspension	300€			350€		400€					
Grain discharge port	235x340 - 200€ / 400x400 - 300€										
Rolling tent, platform in front and aluminum ladder. Pipe in the middle	750€ +1.18 m ³		850€ +1.42 m ³		900€ +1.65 m ³		1100€ +1.89 m ³				
Steering axle (self-steered)	-			2500€		2500€ - front rear - standard					
Conical body shape*	650*			950*							
Extensions	1350€	1350€	1350€	1800€	1400€	1900€	1500€	2000€	1550€	2000€	2000€
extra height, mm	400	400	400	700	450	700	300	900	300	500	450
gross capacity, m ³	16	18	20	24	24,5	28	29,5	39	35	39	47
Mudguards	250€			300€			400€				
K80 hitch	650€			850€							
Rear hitch with hydraulic, pneumatic, electric taps	750€			950€							
Hydraulic connections for auger	250€										
Front board window	200€ polycarbonate glass 700x450 / 300€ perforated steel sheet with cover (rapeseed)										
LED side lights	190€ - 6 pcs					320€ - 8 pcs					
Side tipping to one side	1400€**		1500€	1600€	2100€	2500€					
Non-standard body color	650€										
Combo brakes	950€					1200€					
Side bumpers	150€			250€							
Wheels 560/45R22.5 152D	470€		standard		-						
Wheels 600/55R26.5 165D	-		1600€		1010€	standard		1410€	standard		
Wheels 650/55R26.5 170D	-		-		1400€	1150€		1600€	1450€		
Wheels 710/50R26.5 170D	-		1900€		1700€	1400€		3000€	2100€		
Wheels 750/45R26.5 170D	-		2100€		1900€	1600€		3600€	2700€		

* Changes technical parameters of a semitrailer (length/width/height) / **CANNOT BE ORDERED WITH SIDE TIPPING OPTION** ** Rear tailgate opening - mechanic.



PTL-16F

New Zealand



PTL-20S



PTL-20S



PTL-30F



PTL-20D

Custom made for peat/turf



PTL-24F

Self-steered axles



PTL-15R

Plastic toolbox



PTL-20P

Custom made for tobacco leaves



Original BPW or ADR axles



Rubber sealing



Window / Hydraulic foot

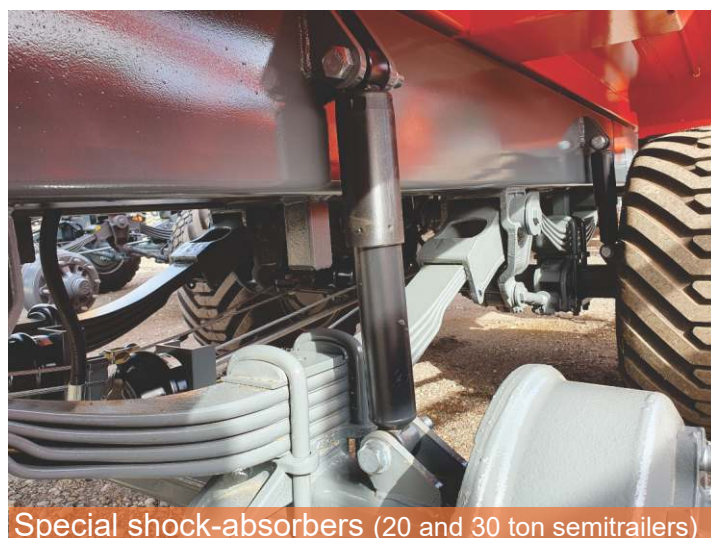
Swivel loop



Automatic Rockinger hitch



Durable original spring chassis with silentblocks



Special shock-absorbers (20 and 30 ton semitrailers)



PTL-30F

Body tipping to rear and side



Grain extensions / Grain discharge hatch

Body tipping to side and rear
Steel and rubber mudguards / LED lights



Hydraulic drawbar suspension



Spring drawbar suspension

CHASER BINS / GRAINCARTS

(Laumetris holds the rights to change any specifications, components, prices at any given time)

Model	UNIBOX30	GIGABOX35	GIGABOX50
Capacity, m ³	2x15 (30 gross), possibility to transfer fertilizers and seeds during sowing	35	50
Capacity, t	24	28	40
Chassis type	spring, tandem / rear steering axle		spring, tridem rear and front steering axles
Bottom/sides thickness, mm	4 / 3		
Unloading speed up to	3,2 m ³ /min	10,0 m ³ /min	8,3 m ³ /min
Auger diameter, mm	325	horizontal - 395 vertical - 435	horizontal - 250 vertical - 380
Wheels	710/45R22.5	710/50R30.5	750/45R26.5
Axle dimensions, mm	□150x150		
Outside dimensions length/width/height, mm	8900/3200/ 4000	9400/2900/ 4000	11000/3200/ 4000
Mass, kg	6500	8000	11000
Brakes: pneumatic or hydraulic	406x140		
Control system	fully electronic: inside auger's valve closing / outside auger folding / auger angle's swiveling / top head swiveling		
Standard colors	frame - grey; body - red / JD green / Claas green		
Platform with ladders	standard		
Swivel loop	standard		
LED lights	standard		
Rolling tent system	standard		
Hydraulic drawbar suspension	standard		
Hydraulic support foot	standard		
Min. tractor power, HP	240	240	300
BASE PRICE	55650€	55650€	100700€
ADDITIONAL OPTIONS	Scales system (Topcon Digi-Star)		3000€ / 4500€
	Combo brakes		950€ / 1200€
	Non-standard body color		650€
	Firefighting equipment, 1,0 m ³		1800€



GIGABOX50M3



GIGABOX30M3



GIGABOX50M3 + PTL-30F



GIGABOX30M3



GIGABOX50M3 + PTL-30F

TRAILERS

(Laumetris holds the rights to change any specifications, components, prices at any given time)

Model	PTL-12T	PTL-14T	PTL-16T
Capacity, m ³	14	16	19
Capacity, t	12	14	16
Chassis type	spring, tandem - one in front, one in rear		
Bottom / side thickness	4 / 3		
Wheels	550/45-22.5 385/55R22.5	560/45R22.5 385/55R22.5	385/55R22.5
Axle dimensions, mm	□90x90 □120x120		
Body's dimensions	5000/2060/	5870/2060/	5970/2060/
length/width/height, mm	1355	1405	1505
Outside dimensions	7480/2500/	8475/2500/	8480/2500/
length/width/height, mm	2965	3060	3065
Mass, kg	4450	5100	5700
Brakes: pneumatic or hydraulic	400x80	406x120	
Standard colors	frame - grey; body - JD green / Red		
Hydraulic tailgate	standard		
Swivel loop	standard		
LED lights	standard		
Rubber seal for tailgate	standard		
Min. tractor power, HP	100	110	130
BASE PRICE	20140€	27030€	29360€
Grain discharge port	235x340 - 200€ / 400x400 - 300€		
Rolling tent, platform in front and aluminum ladder. Pipe in the middle. + 1,2 m ³ capacity.	750€ +1.18 m ³		850€ +1.42 m ³
Silage extensions	1350€	1350€	1400€
extra height, mm	400	400	450
gross capacity, m ³	18	20	24,5
Mudguards	300€		
Rear hitch with hydraulic, pneumatic, electric taps	750€		
Hydraulic connection for auger	250€		
Side tipping (1 side)	1300€		1500€
Front board window	200€ plastic 700x450 / 300€ perforated metal plate with cover		
Combo brakes	950€		
Non-standard colors	650€		
LED side lights	190€ - 6 pcs		
Side bumpers	250€		



PTL-16T

ROOT SEMITRAILERS

(Laumetris holds the rights to change any specifications, components, prices at any given time)

Model	PTL-15P	PTL-17P	PTL-20P
Capacity, m ³	18	20	24,5
Capacity, t	15	17	20
Chassis type	spring, tandem		
Bottom / side thickness	4 / 3		
Wheels	560/60R22.5		600/55R26.5
Axle dimensions, mm	□120x120		□150x150
Body's dimensions	6000/2060/	7000/2060/	8000/2060/
length/width/height, mm	1470	1470	1470
Outside dimensions	8060/2510/	9070/2550/	9800/2550/
length/width/height, mm	2650	2650	2650
Mass, kg	5850	6050	6300
Unloading height, mm	850		
Brakes: pneumatic or hydraulic	406x120		406x140
Standard colors	frame - grey; body - JD green / Red		
Hydraulic tailgate	standard		
Mechanic support foot	standard		
Swivel loop	standard		
LED lights	standard		
Rubber seal for tailgate	standard		
Min. tractor power, HP	125	135	155
BASE PRICE	29360€	32100€	35930€
Hydraulic support foot	300€		
Drawbar spring suspension	350€		
Grain discharge port	235x340 - 200€ / 400x400 - 300€		
Rolling tent, platform in front and aluminum ladder. Pipe in the middle. + 1,2 m ³ capacity.	850€		900€
Steering axle (self-steered)	2500€		
Extensions	1400€	1500€	1600€
extra height, mm	300	300	300
gross capacity, m ³	22	24,5	29,5
Mudguards	300€		
K80 hitch	850€		
Rear hitch with hydraulic, pneumatic, electric taps	950€		
Front board window	200€ plastic 700x450 / 300€ perforated metal plate with cover		
Mechanic side opening	1400€	1600€	1800€
Hardox steel bottom, 4 mm thickness	950€	1100€	1200€
Hardox steel full body, 4 mm thickness*	2150€	2350€	2650€
Combo brakes	950€		
Non-standard colors	650€		
Side bumpers	250€		
Wheels 600/50R22.5**	1300€		
Wheels 710/45R22.5 165D, only hydraulic brakes**	2200€***		1625€***
Side LED lights	190€ - 6 pcs		320€ - 8 pcs

* Body design different than standard.

** Changes total height of semitrailer.

*** With 710/45R22.5 wheels steering axle cannot be ordered.

CONSTRUCTION DUMPERS

(Laumetris holds the rights to change any specifications, components, prices at any given time)

Model	PTL-5S	PTL-10S	PTL-12S	PTL-16SF _{flat}	PTL-16S	PTL-20S	PTL-30S	
Capacity, m ³	3	5	7,5	10	9	10	16	
Capacity, t	5	10	12	16	16	20	30	
Chassis type	2 semiaxles	spring, tandem					tridem	
Axle dimensions, mm	□80x80	□90x90		□120x120		□150x150		
Bottom thickness/hardox	6 / 4			8 / 5		10 / 6		
Side thickness/hardox	6 / 4			8 / 5		8 / 6		
Wheels	19/45x17	550/45-22.5	560/45R22.5	560/60R22.5		600/55R26.5		
Inside dimensions length/width/height, mm	3600/2140/ 710	4280/2180/ 620	4450/2180/ 820	5200/2015/ 1130	5040/2005/ 1035	5000/2000/ 1315	6500/2000/ 1225	
Outside dimensions length/width/height, mm	4900/2350/ 1465	6230/2470/ 1890	6000/2450/ 2050	6800/2460/ 2510	6680/2510/ 2510	6830/2460/ 2550	7800/2450/ 2700	
Mass, kg	2450	3600	4400	5600	5800	6250	9250	
Brakes: pneumatic or hydraulic	-	400x80		406x120		406x140		
Standard colors	frame - grey; body - JD green / Red							
Tailgate type	mechanic - vertic. and horizont.			hydraulic				
Support foot type	mechanic			hydraulic				
Swivel loop				standard				
LED lights	standard							
Min. tractor power, HP	80	90	100	150	150	200	250	
BASE PRICE	9540€	18330€	21830€	30420€		37100€	47700€	
Hydraulic tailgate	400€		standard					
Hydraulic+mechanic tailgate	-	650€	-					
Hydraulic tailgate lock	-	350€		-				
Hydraulic support foot	300€			standard				
Drawbar spring suspension	-	300€		350€		400€		
Steering axle (self-steered)	-			2500€		2500€ standard 1		
LED side lights	190€ - 6 pcs							
Extensions gross capacity, m ³	-	1100€ 10,5 m ³	1400€ 13 m ³	1900€ 20 m ³		2050€ 20 m ³	-	
Mudguards	-	250€		300€		400€		
K80 hitch	-	650€		850€				
Side bumpers	-	150€		250€				
Non-standard colors	650€							
Hardox steel bottom	770€	1190€	1330€	1620€		1770€	2000€	
Hardox steel full body	1100€	1700€	1900€	2700€		2950€	3350€	
Driving up trap for excavator	-	800€		-				
Wheels 560/45R22.5 152D	-	470€	standard	-				
Wheels 600/55R26.5 165D	-			940€		standard		
Hydraulic swings reduction system	-			1300€		1950€		



SUGAR BEETS AND PEAT SEMITRAILERS

(Laumetris holds the rights to change any specifications, components, prices at any given time)

Model	PTL-24C	PTL-16D	PTL-20D	
Capacity, m ³	24	16	20	
Capacity, t	15	15		
Chassis type	single axle	spring, tandem		
Axle dimensions, mm	□150x150	□120x120		
Bottom thickness/hardox, mm	6	4 / 3		
Side thickness/hardox, mm	4	3 / 2,5		
Wheels	30,5L-R32			
Outer dimensions	10000/3100/	7050/3400	8300/3800	
length/width/height, mm	3600	3200	2900	
Mass, kg	5420	4100	4550	
Brakes: pneumatic or hydraulic	406x120			
Standard colors	frame - grey; body - JD green / Red			
Hydraulic tailboard	standard			
Mechanic support foot	standard			
Swivel loop	standard			
LED lights	standard			
Min. tractor power, HP	150	100	120	
BASE PRICE	33900€	35500€	53000€	
ADDITIONAL OPTIONS	Hydraulic support foot	300€		
	Non-standard colors	650€		
	Front platform + rolling up canopy	-	700€	
	Hardox	-	2450€	
	Wheels 71x47.00-25 (2 pcs)	1500€	-	-
	LED side lights	190€ - 6 pcs / 320€ - 8 pcs		
	Side bumpers	250€		



PTL-24C



PTL-16D



PTL-24C



PTL-20D

TANK SEMITRAILERS

(Laumetris holds the rights to change any specifications, components, prices at any given time)

Model	PTL-6V / 8V	PTL-12V economic	PTL-10V / 12V	PTL-16V / 20V	LCM-6*
Capacity, m ³	6 / 8	12	10 / 12,5	16 / 20	6 and 0,275
Capacity, t	8	16	16	24	16
Chassis type	single axle	spring, tandem			
Axle dimensions, mm	□90x90		□150x150		□90x90
Wheels	550/45-22.5	560/45R22.5		600/55R22.5	560/45R22.5
Outer dimensions length/width/height, mm	6200/2450/ 2400	7000/2500/ 3100	7000/2500/ 3100	9315/2550/ 3550	10100/2525/ 2900
Pump type, m ³ /min	centrifugal, 0,75		vacuum-rotary, 1,25		vacuum-rotary, 0,7
Powering type	hydraulic motor				
Second pump, m ³ /min	-				petrol or dyzel, 0,9
Main functions	suction of water to tank; water mixing inside a tank; sprayer filling; LCM-6*				
Filter for filling in	perforated steel filter				
Tank's material	stainless steel / glassfiber (Germany)	glassfiber (Estonia)	stainless steel / glassfiber (Germany)		
Brakes: pneumatic or hydraulic	400x80		406x140		400x80
Standard colors	frame - grey; tank - yellow / gray				
Mechanic support foot	standard				
Swivel loop	standard				
LED lights	standard				
Mass, kg	1950	3750	3750	4500	3850
Min. tractor power, HP	80	95	95	150	95
BASE PRICE	17850€/19380€	20400€	30600€/33660€	41800€/43850€	56000€
Hydraulic support foot	300€				
Tank level measurement hose	200€ - simple hose with a float / 550€ - flanged level indicator				
Tank level measurement sensor	1050€				
Steering axle	-	2500€			
35 ltr. capacity chemical mixer + tank washing/rinsing	1100€			-	
Boom with hose to reach sprayer	-	3500€		3700€	
PTO shaft for pump	450€				
k80 coupling	650€	850€			650€
LED side lights	190€ - 6 vnt / 320€ - 8 vnt				
Road irrigation system	930€ rear screwable steel profile with holes, width up to 3 meters				
Vogelsang pump, 0,7 m ³ /min	2500€ vakuuminis - rotorinis		standard		
Wheels 560/45R22.5 152D	205€		standard		

* Additional LCM-6 functions: 275 ltr. tank filling with water from main tank; tank filling with chemicals from different chemical tanks; mixing of chemicals; melting of fertilizers; sprayer filling with solution through injector - no contact with main tank; rinse and washing of tanks. 4 euro palettes for chemicals storage.

PTL-12V



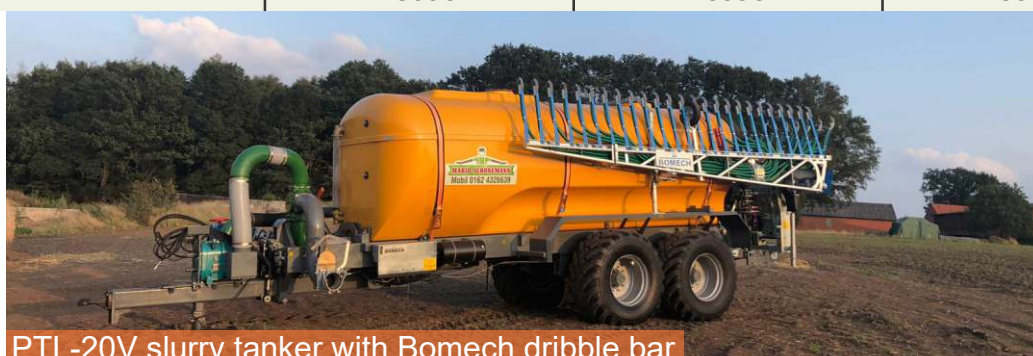
LCM-20



SLURRY TANK SEMITRAILERS

(Laumetris holds the rights to change any specifications, components, prices at any given time)

Model	PTL-6V / 8V	PTL-10V / 12V	PTL-16V / 20V
Capacity, m ³	6 / 8	10 / 12,5	15,5 / 20
Capacity, t	8	16	24
Chassis type	single axle	spring, tandem	
Axle dimensions, mm	□90x90		□150x150
Wheels	550/45-22.5	600/50R26.5	710/50R26.5
Outer dimensions length/width/height, mm	6200/2450/ 2400	7000/2500/ 3100	9315/2550/ 3550
Brakes	400x80		406x140
Pump type, m ³ /min	„Vogelsang“ FX116-360 vacuum-rotary, 4,5		
Powering type	hydraulic motor / PTO cardan shaft		
Main functions	slurry suction, mixing inside a tank, flow to a connected injection implement slurry injection (option order), slurry filling to another tanker		
Rear implement connection	3 point hitch controlled hydraulically		
Tank's material	German made long lasting glass fiber tank resistant to slurry, chemicals		
Standard colors	frame - grey; tank - yellow / grey		
Mechanic support foot	standard		
Swivel loop	standard		
LED lights	standard		
Mass, kg	2500	4250	5250
Min. tractor power, HP	100	125	180
BASE PRICE	29800€ / 31530€	42340€ / 47540€	58770€ / 61830€
Hydraulic support foot	300€		
Tank level measurement hose	200€ - simple hose with a float / 550€ - flanged level indicator		
Tank level measurement sensor	1050€ - pressure sensor with tablet screen		
Steering axle	-	2500€	
3 m. disc type slurry injector with Vogelsang distribution	19500€	22000€	
4 m. disc type slurry injector with Vogelsang distribution	23000€	25000€	
4 m. disc type slurry injector for grassland with Vog. distr.	25000€		
6 m. disc type slurry injector for grassland with Vog. distr.	32000€		
k80 coupling	650€	850€	
LED side lights	190€ - 6 pcs / 320€ - 8 pcs		
Road irrigation system	930€ rear screwable steel profile with holes, width up to 3 meters		
Wheels 560/45R22.5 152D	205€	-	-
Stainless steel tank	1500€	2000€	3000€



PTL-20V slurry tanker with Bomech dribble bar

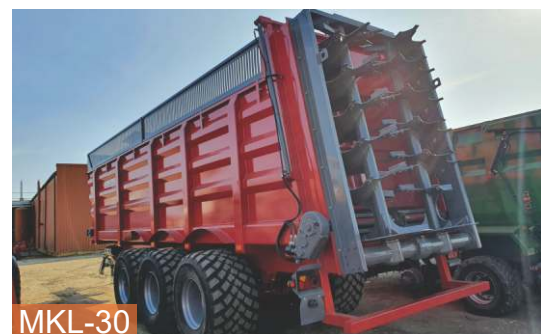
MANURE SPREADERS

(Laumetris holds the rights to change any specifications, components, prices at any given time)

Model	MKL-10	MKL-12	MKL-14	MKL-16	MKL-16D	MKL-20	
Capacity, m ³	10	12	14	16	16	22	
Capacity, t	10	12	14	16	16	22	
Chassis type	single axle			spring, tandem/ rear steering axle			
Axle dimensions, mm	□120x120			□150x150			
Loading height, mm	2700	2850	3050	3300	3400		
Outside dimensions length/width/height, mm	8600/3300/ 3000	8600/3300/ 3200	8600/3300/ 3340	8600/3300/ 3600	8100/3200/ 3600	10100/3200/ 3600	
Bottom/sides thickness, mm	6 / 6						
Operational width, m	iki 12				iki 14		
Beaters quantity, pcs	2						
Wheels	710/50R30.5			30.5LR32	650/55R26.5		
Transporter speed regulation	hydraulic valve						
Brakes: pneumatic or hydraulic	406x120			406x140			
Hydraulic tailboard	standard						
Hydraulic drawbar suspension	standard						
Hydraulic support foot	standard						
Swivel loop	standard						
LED lights	standard						
Mudguards	standard						
Min. tractor power, HP	120	140	150	170	170	200	
BASE PRICE	29600€	31630€	35700€	39800€	45900€	50000€	
ADDITIONAL OPTIONS	Electronic speed control system				1700€		2200€
	Variable rate system with scales DigiDevice				6500€		
	Horizontal beater + spec. rear tailgate				4500€ + 3000€		
	Non-standard colors				700€		
	K80 hitch				950€		
	Reverse transporter gear				1000€		
	Wheels 30.5LR32				-	800€	-



MKL-14



MKL-30



MKL-12

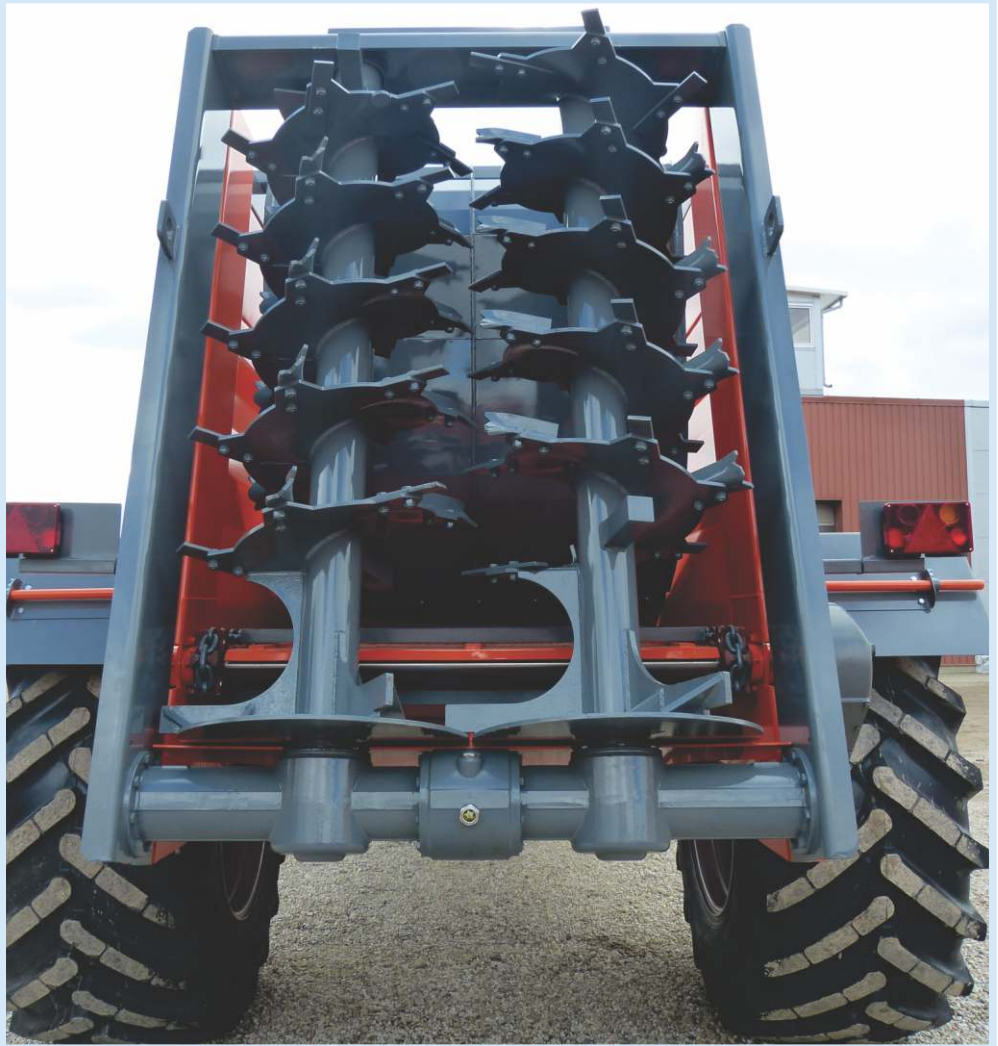


MKL-20



Top quality gearboxes

Gearboxes used in MKL manure spreader line are top quality from Italian manufacturer BERMA.



Spring washers

Tense of manure spreader transporter is being stretched by special spring washers.

Quality comes first

Laumetris uses just the finest quality products from its name proven manufacturers. Vertical beaters are produced in the same company as gearboxes - BERMA. Well-known manure spreaders' parts manufacturer from Italy. 40 years of experience combined with Laumetris mind set led to develop one of the best manure spreader on market there is. MKL line is the result of Lithuanian rigidity with a touch of Italian intelligence.



Additional equipment

Front body window, led lights, wide wheels, mudguards, rear hitch with taps, automatic steering axles, hydraulic support foot, hardox metal and more.

Durability of transporter system

Thick and high grade chains assure longevity and durability. Change of transversal steel profile is comfortable and easy to accomplish due to simple two-screws system.



Hydraulic tailgate

Manure has to be separated from beaters, MKL line spreaders' hydraulic tailgate does not get raised so high in height.

PLATFORM SEMITRAILERS

(Laumetris holds the rights to change any specifications, components, prices at any given time)

	PTL-10R	PTL-12R	PTL-15R	PTL-20R	PTL-24R
STANDARD EQUIPMENT	Model				
	Bottom material / thickness				
	Capacity, t				
	Chassis type				
	Wheels				
	Axle dimensions, mm				
	Inner dimensions length/width/height, mm				
	Brakes: pneumatic or hydraulic				
	Standard colors				
	Support foot type				
	Swivel loop				
	LED lights				
	Hydraulic platform lifting				
	Mass, kg				
	Min. tractor power, HP				
BASE PRICE					
ADDITIONAL OPTIONS	Hydraulic support foot				
	Drawbar spring suspension				
	Steering axle (self-steered)				
	Third axle with rear steered				
	Non-standard colors				
	Rear hitch with hydraulic, pneumatic, electric taps				
	Three-position boards				
	Special front/rear boards				
	Hydraulic sides				
	Toolbox / ladder				
	Side LED lights				
	Ratai 600/40-22.5				
	Ratai 600/40-22.5				
	Ratai 710/45R22.5 165D				
	Ratai 710/45R22.5 165D				



PTL-15R



PTL-20R



PTL-15R

PLATFORM TRAILERS

(Laumetris holds the rights to change any specifications, components, prices at any given time)

Model	PTL-15RT	PTL-20RT	PTL-24RT
Bottom material / thickness	steel / 4		
Capacity, t	15	20	24
Chassis type	spring, tandem	spring, tridem	
Wheels	560/45R22.5		
Axle dimensions, mm	□120x120		
Inner dimensions	9100	9100	10050
length/width/height, mm	2400/1380	2400/1380	2400/1380
Brakes: pneumatic or hydraulic	406x120		
Standard colors	Red / JD green		
Swivel loop	standard		
LED lights	standard		
Mass, kg	4800	5100	5500
Min. tractor power, HP	150	170	180
BASE PRICE	17860€	22750€	26430€
Rear steering axle (self-steered)	2500€		
Non-standard colors	650€		
Rear hitch with hydraulic, pneumatic, electric taps	750€		
Three-position boards	350€		
Special front/rear boards	800€ increases loading length ~1,5 m. - extra 4 more bales		
Hydraulic sides	3800€		
Toolbox / ladder	200€ / 250€		
Side LED lights	190€ - 6 pcs / 320€ - 8 pcs		
Ratai 600/40-22.5	600€ (4 pcs)	900€ (6 pcs)	
Ratai 710/45R22.5 165D	2400€ (4 pcs)	3600€ (6 pcs)	

STANDARD EQUIPMENT

ADDITIONAL OPTIONS



LIVESTOCK SEMITRAILERS

(Laumetris holds the rights to change any specifications, components, prices at any given time)

	PTL-6G	PTL-8G	PTL-10G	
STANDARD EQUIPMENT	Model	PTL-6G	PTL-8G	PTL-10G
	Bottom/sides' material	plywood or steel		
	Capacity, t	6	8	10
	Chassis type	singel axle		
	Wheels	385/55R22.5		
	Inner dimensions wheels inside - length/width, mm	5000/1850/ area - 9,25 m ²	6000/1850/ area - 11 m ²	7500/1850/ area - 14 m ²
	Inner dimensions wheels outside - length/width, mm	-	6000/2300/ area - 12,5 m ²	7000/2300/ area - 14,5 m ²
	Standard colors	green		
	Mechanic support foot	standard		
	Swivel loop	standard		
	LED lights	standard		
	Doors rear/side; tent	standard		
	Hydraulic lifting	standard		
Min. tractor power, HP	80	90	100	
BASE PRICE	12200€	14100€	15200€	
ADDITIONAL OPTIONS	Non-standard colors	650€		
	Doors in the middle	600€		
	K80 hitch	850€		
	Anti-slip rubber surface	900€	1025€	1150€
	Wheels 445/45R29.5	550€		
	Special reinforced Strenx steel for body and frame		according to steel grade 650-1100: 2500€-10000€	



PTL-8G



PTL-10G



PTL-10G



PTL-8G

SILAGE SEMITRAILERS

(Laumetris holds the rights to change any specifications, components, prices at any given time)

Model	MKL-30Z	MKL-40Z	MKL-50Z	
Capacity, m ³	40	40	50	
Capacity, t	20	24	30	
Unloading speed, min	3-6			
Chassis type	spring, tandem	spring, tridem	spring, tridem	
Axle dimensions, mm	□150x150, 406x140	□120x120, 406x120	□150x150, 406x140	
Self-steered axles	1, rear	2, front and rear	2, front and rear	
Wheels	600/55R26.5			
Brakes	pneumatic or hydraulic			
Bottom / side thickness	4 / 3			
STANDARD EQUIPMENT	Body's dimensions	8000/2250-2570/	9900/2110-2265/	10000/2260-2700/
	length/width/height, mm	2000	1770	2550
	Outside dimensions	10400/2800/	11900/2550	12000/3200
	length/width/height, mm	3700	3400	3700
	Mass, kg	7500	8600	10500
	Gearbox quantity, pcs	1		2
	Transporter chain, pcs	4		
	Chain thickness, mm	14		
	Front board window	standard		
	Hydraulic drawbar suspension	standard		
	Standard colors	JD green with yellow / grey		
	Hydraulic tailgate	standard		
	Hydraulic support foot	standard		
	Swivel loop	standard		
	LED lights (2x)	standard with second set on top of a tailgate		
	Min. tractor power, HP	180	220	260
	BASE PRICE	37140€	47750€	58360€
ADDITIONAL OPTIONS	Forced-steered axle	2600€ (production time + 6 months)		
	Additional extensions	1500€	2000€	2500€
	extra height, mm	300	500	380
	gross capacity, m ³	45	50	60
	Rear white lights 4x	400€		
	K80 hitch	850€		
	Non-standard body color	900€		
	Combo brakes	950€	1200€	
	Side LED lights	250€ - 10 pcs / 300€ - 12 pcs		
	Side bumpers	250€		
Wheels 710/50R26.5	800€	1200€		
Wheels 750/45R26.5	1200€	1800€		

MKL-60Z



MKL-30Z

MKL-50Z



The most popular model from the line

MKL-30Z



Offers great volume and maneuverability

MKL-50Z



During the grain harvest

MKL-60Z



4 axles, two self-steered

MKL-60Z



Extremely rigid and developed for harshest conditions

4x MKL-50Z



4x MKL-50Z owned by a single animal farm

LAR STONE PICKER

(Laumetris holds the rights to change any specifications, components, prices at any given time)

	Model	LAR-1
STANDARD EQUIPMENT	Type	trailed
	Lifting power, kg	1800
	Capacity, m ³	1,5
	Transport width, m	3
	Wheels	13,6R38
	Mass, kg	2800
	Min. tractor power, HP	80
	BASE PRICE	12240€
	Special three-point hitch	450€



SEMITRAILER FOR FIBER HEMP TRANSPORTATION

(Laumetris holds the rights to change any specifications, components, prices at any given time)

Model	PTL-20K
Capacity, m ³	20
Capacity, t	16
Unloading speed, min	up to 3
Chassis type	spring, tandem
Axle dimensions, mm	□120x120
Wheels	600/50R22.5
Brakes type, size mm	pneumatic or hydraulic, 406x120
Bottom / side thickness	4 / 3
Body's dimensions length/width/height, mm	6900/2110-2265/ 1770
Outside dimensions length/width/height, mm	9200/2800 3200
Mass, kg	6100
Gearbox quantity, pcs	1
Transporter chain, pcs	4
Chain thickness, mm	14
Ventilator 90-150 m ³ /min, air pressure 1320-1550 PA	standard
Ducts' cleaning windows	standard
Aluminium ladder	standard
Standard colors	JD green with yellow
Hydraulic tailgate	standard
Hydraulic repulse board 1,2 m. width	standard
Hydraulic support foot	standard
Swivel loop	standard
LED lights (2x)	standard with top mounted
Min. trauktoriaus galia, AG	180
BASE PRICE	46630€
Drawbar spring suspension	350€
Additional extensions extra height, mm	2000€ 400
gross capacity, m ³	26
Additional extensions extra height, mm	3000€ 800
gross capacity, m ³	30
Rear white lights 4x	400€
K80 hitch	850€
Non-standard body color	650€
Combo brakes	950€
Side bumpers	250€
Side LED lights	190€ - 6 pcs

STANDARD EQUIPMENT

ADDITIONAL OPTIONS



K-15 HEMP HARVESTING SYSTEM

(Laumetris holds the rights to change any specifications, components, prices at any given time)

K-15 hemp harvesting system is designed for CBD hemp leaf tops, inflorescences and seeds harvesting. Aggregate base: 300-340 HP tractor with frontal loader, double wheels and powerful hydraulic system of 200 ltr/min pump. Frontal loader equipped with 6 m. stripper strips off leaf tops, inflorescences and seeds. Whole mass is being delivered to rear body through transporter system. Rear body has capacity of 15 m³ and is capable to be lifted up and down for smoother unloading process. Mass of stripped hemp is moved and unloaded through moving floor - chain transporter. Harvested CBD hemp must be conditioned directly of harvesting in order to keep all the good qualities of hemp. This can be achieved with Laumetris PTL-20K semitrailer equipped with conditioner, which ventilates the hemp mass while driving or waiting for more load. All technical details and available options of PTL-20K can be found in previous page. On standard basis K-15 hemp harvesting system is equipped with certain size of stripper adapted with farmer's tractor. Because of different dimensions every K-15 system is fully engineered and developed according the needs and capabilities of farmer's machinery. The most of oil consumption is being used for stripper (~80%), the rest is for transporter system, which delivers stripped hemp back to rear body. Rear body's management: hydraulic tailgate lifting, whole body's lifting up and down for smoother unloading process and bottom chain transporter, is powered with additional oil system connected to rear PTO. There are installed rear LED lights for safety and additionally white LED work lights can be installed in various places. Cameras for better handling of machinery are equipped according customer's needs.

K-15 hemp harvesting system **BASE PRICE** varies from **150 000 euro** depending on clients requirements . It does not include Shelbourne's (other manufacturer's) stripper nor front loader. Laumetris K-15 built in 2019 has harvested around 800 ha of fiber hemp fields in various fields of Lithuania per season.



KP-4 FIBER HEMP CUTTER

(Laumetris holds the rights to change any specifications, components, prices at any given time)

Model	KP-4	KP-5
Type	trailed	
Operational width, m / ft	2,8 / 9'2	
Working speed, km/h / mph	8-25 / 5-16	
Cutting bars, pcs	4	5
Distance between cutters, mm / ft	600 / 2	
Wheels	520/50-17	
Transport width, m / ft	2,5 / 8'2	2,5 / 8'2
Mass, kg / lbs	5800 / 12,800	6300 / 14,000
Required horse power, HP	160-200	160-220
BASE PRICE	102000€ / \$119,900	115000€ / \$136,000

STANDARD EQUIPMENT



Fiber hemp cutter KP-4 cuts fiber hemp in 4 levels by 60 cm distance - such length of stems is an industry standard for processing. The very first 6 units were ordered by Lithuanian based fiber hemp processing factory „Natūralus pluoštas“, UAB. Operational speed reaches 12-15 km/h, operational width 2,8 m., machine requires 160-200 HP with 700 rpm on cardan shaft. Cutters are equipped with the highest quality German engineered “Schumacher” gearboxes and cutting blades. The developed belt driven system is robust and reliable for harsh conditions and non stop 24 hours operations. In transport position cutters are folded hydraulically and hydraulically locked for safety. Hydraulic chassis is equipped with 400 mm width wheels. 6 of these machines in 2019 cut 1500 ha of fields in Lithuania. Beginning of 2020 first KP-4 was shipped to Vancouver, Canada - marking the very first Laumetris product outside continental Europe. In 2023 season a single unit topped more than 1000 ha of hemp harvested in Montana state at IND Hemp farm. At present time Laumetris KP-4 fiber hemp harvesters are working in: Australia, Canada, France, Italy, Lithuania, Poland, Romania, russia (unfortunately), Slovakia, South Korea, Sweden, Turkey, the United Kingdom, USA: Florida, Illinois, Kansas, Montana, Texas, Virginia. KP-4 easily fits into a 20' container, two KP-4 can be fit into a 40' container.

Est. in 2024

~10%
of WORLDWIDE
FIBER HEMP
was cut with
LAUMETRIS
KP-4

HEMPCUTTER.COM
laumetris.lt/hemp



STUBBLE HARROWS

(Laumetris holds the rights to change any specifications, components, prices at any given time)

Model	SL-3	SL-4	SL-4T	SL-5T	SL-6T
Type	mounted		trailed		
Operational width, m	3	4	4	5,2	6
Operational depth, mm	up to 250		up to 350		
Coulters type	chisel and screwed coulter				
Coulters, pcs	10	15	15	19	22
Coulters width, mm	250 or 350				
Chisel width, mm	40				
Leveling	with spring tines				
Roller type, 50 cm diameter	pipe				
Operational depth control	hydraulically through roller				
Wheels	-		520/50-17		
Transportation width, m	3,3	4,5	2,8		
Mass, kg	1550	2500	5250	6050	6600
Min. tractor power, HP	150-180	180-220	190-240	280-300	300-350
BASE PRICE	11680€	13260€	22240€	24500€	25500€
Single U type ring roller (50 cm)	1500€	2000€	-		
Single spring segment roller (50 cm)	1500€	2000€	-		
Double ring type roller (50 cm)	-		3000€	4000€	5000€
Double spring segment roller (50 cm)	-		3000€	4000€	5000€
Single steel disc roller (50 cm)	-		3000€	4000€	5000€
APV sowing machine PS120M1	5000€ request an offer before calculating price				
Support wheels in front	-		1000€		
Hydraulically foldable frame to fit into 2,55 m	2000€		-		



SL-3



SL-3



SL-4T



SL-3

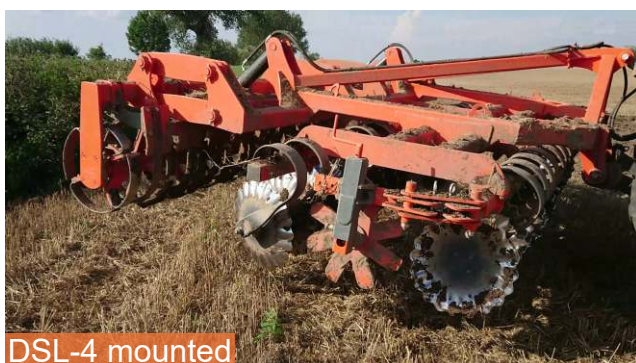


SL-4T

DISC HARROWS

(Laumetris holds the rights to change any specifications, components, prices at any given time)

	DSL-3	DSL-4	DSL-3.5T	DSL-4T	DSL-5T	DSL-6T	DSL-8T
Model							
Type	mounted			trailed			
Operational width, m	3	4	3,5	4	5	6	8
Operational depth, mm	up to 120						
Disc diameter, mm	510						
Discs, pcs	23	31	24	30	36	40	58
Disc type	notched						
Distance between discs, mm	125						
Distance between discs' lanes, mm	1050						
Wheels	-		520/50-17				710/45-22.5
Roller type, diameter mm	pipe, 500						pipe, 700
Operational depth control	hydraulically through rollers						
Transportation width, m	3,2	4,3	3,5	2,5		3,45	
Mass, kg	2200	2500	3500	4750	5500	6500	8500
Min. tractor power, HP	160	180	160	190	240	280	320
BASE PRICE	14850€	17000€	18550€	19080€	22450€	25500€	35000€
ADDITIONAL OPTIONS							
VT-REX curved waves and sharp discs	600€	800€	600€	600€	800€	1000€	1500€
560 mm diameter discs	1000€	1500€	1100€	1500€	2000€	2500€	3500€
Single U type ring roller (50 cm)	1500€	2000€	-				
Single spring segment roller (50 cm)	1500€	2000€	-				
Double U type ring roller (50 cm)	-	-	2700€	3000€	4000€	5000€	7000€
Double spring segment roller (50 cm)	-	-	2700€	3000€	4000€	5000€	7000€
Single steel disc type roller (50 cm)	-	-	2700€	3000€	4000€	5000€	7000€
Atraminiai sparnų ratai	-	-	1000€			-	
Hydraulinis rėmo sulankstymas į 2,55 m plotį	2000€					-	



COMPACTION ROLLERS

(Laumetris holds the rights to change any specifications, components, prices at any given time)

Model	TVLL-6	TVLL-8	TVLL-9	TVLL-10
Type	trailed			
Operational width, m	6	8	9	10
Sections, units	3			5
Roller type	"Cambridge"			
Disc diameter, mm	510			
Wheels	400/60-15.5	520/50-17		600/50-22.5
Mass, kg	4100	6500	6800	9000
Load on the hook, kg	1600	2000	2200	2200
Min. tractor power, HP	120	160	170	200
BASE PRICE	13780€	19080€	26530€	37140€
Front crossboard	2500€	3500€	4000€	-
Cambridge type rings, 600 mm	1500€	2150€	2400€	2550€
Cross kill type rings, 510 mm	1800€	-	-	-
Pneumatic sowing machine	4550€*	6800€**	6800€**	6800€**

STANDARD EQUIPMENT

ADDITIONAL OPTIONS

Request pricing of APV sowing units before calculating the end price
 * APV PS120M1 - 120 liters; direct, up to 6 m width through 8 hoses; electronic managemem;
 ** APV PS300M1 - 300 liters; direct, up to 6 m width through 8 hoses; electronic management



TVLL-6



TVLL-6



TVLL-9



TVLL-8



TVLL-6



New type TVLL rollers

New type of TVLL-8 and 10 was designed in 2015, fully tested in 2016, now comes up with novel and modern folding system. Unfolding / folding is managed through hydraulic system, no need to wait your precious time driving backwards and forward to start working. Does not exceed 2,5 meters width in transport position. Copies ground surface better than ever. Characterize with high mass for top quality soil compaction. Available with wider diameter „Cambridge“ type rings of 600 mm.



Strong and rigid axis

Steel grade of axis used in TVLL line compaction rollers is 42GrMoS4 - special reinforced steel. Reaching minimum of 780 N/mm² power.

Unique compression system

Special spring washers are used to increase durability of cast rings and efficiency of rollers.



Crossboard leveling

TVLL-4; 6 and 8 is equipped with powerful spring crossboard leveling system.



Long-life rings

Cast production of TVLL rings „Cambridge“ or „Cross kill“ type are manufactured from high hit - resistance GGG-50 grade steel. Durability guaranteed!



Special bearings

Top-notch quality bearings with hit resistance and unique construction proves to be top solution.

SOIL PREPARATION AGGREGATES- CULTIVATOR KLG

(Laumetris holds the rights to change any specifications, components, prices at any given time)

Model	KLG-3.6	KLG-4	KLG-5	KLG-6	KLG-6D	KLG-7.5	KLG-9
Type	trailed						
Operational width, m	3,6	4	5	6	6	7.5	9
Operational depth, mm	up to 80						
Spring coulters, pcs	60	66	80	100	100	126	150
Coulter/wear point size	32x10x300/40x6x135						
Sections, pcs	3		4			6	
Rollers per section, pcs	2			3		2	
Roller diameter, mm	400						
Third roller diameter, mm					250		
Front crossboard row (pcs)	24	27	32	40		48	58
Leveler tine/wear point size	32x10x302/60x10x240						
Wheels	10.0/75-15.3		400/60-15.5			600/50-22.5	710/45-22.5
Transportation width, m	3,6	4	2,5				3,2
Mass, kg	1900	2000	2800	3200	3500	3800	4800
Min. tractor power, HP	80	90	130	150	165	200	260
BASE PRICE	10100€	11100€	14850€	15900€	19080€	20150€	26500€
Crosskill rear roller, 350 mm	1000€	1200€	1600€	1700€	1700€	2200€	2650€
APV direct sowing machines	-		+			-	

STANDARD EQUIPMENT

ADDITIONAL OPTIONS



MOUNTED CULTIVATORS

(Laumetris holds the rights to change any specifications, components, prices at any given time)

Model	KLL-3.6L	KLL-4L	KLL-4	KLL-6L	KLL-6	KLL-8
Type	mounted / non-foldable			mounted / foldable		
Operational width, m	3,6	4	4	6		8
Operational depth, mm	up to 120					
Sections, units	1			3		
Coulters, pcs	31	35	35	54	54	73
Coulters/wear point size	light type 32x10x390/40x6x190		heavy type	light type	heavy type 45x12x530/ 60(150x4 arrow type)x6x260	
Coulters spacing, mm	110					
Front/rear crossboard, pcs	16/-	18/-	18/26	30/-	30/40	44/54
Front leveler tine/wear point size	6x160		heavy type	6x160	80x10x363/120x10x240	
Rear leveler tine/wear point size	-		type	-	32x10x302/60x10x240	
Back harrows/rear roller	-/+		20/-		31/-	41/-
Wheels	165R13		10.0/80-12	185R14	10.0/80-12	
Transportation width, m	3,8	4	4	3,6	3,6	3,8
Mass, kg	650	710	1050	1100	2650	2950
Min. tractor power, HP	80	90	110	120	130	160
BASE PRICE	4800€	5300€	7960€	8500€	15900€	20150€
Arrow type coulters, 150x4	-		400€	-	600€	800€
Rear roller instead of crossboard and harrows	-		450€	-	650€	850€

STANDARD EQUIPMENT

ADDITIONAL OPTIONS



TRAILED CULTIVATORS

(Laumetris holds the rights to change any specifications, components, prices at any given time)

Model	KLL-6T	KLL-8T	KLL-10T
Type	trailed		
Operational width, m	6	8	10
Operational depth, mm	40-120		
Tines, pcs	80	106	134
Tines spacing, mm	75		
Coulters/wear point size	45x10x460/40x6x210		
Front/rear crossboard, pcs	30/44	36/54	46/68
Front leveler tine/wear point size	80x10x363/120x10x240		
Rear leveler tine/wear point size	32x10x302/60x10x240		
Back harrows	35	45	55
Wheels (8 pcs)	10.0/75-15.3		
Transportation width, m	3,5	4	
Mass, kg	3250	3850	5600
Min. tractor power, HP	160	240	300
BASE PRICE	21200€	26530€	31830€
45x12 tines with 150 mm arrow type coulter	900€	1100€	1400€

STANDARD EQUIPMENT



KLL-10T



KLL-10T



KLL-6T



KLL-8T



KLL-8T

HARD SOIL TILLAGE CULTIVATORS

(Laumetris holds the rights to change any specifications, components, prices at any given time)

Model	KLS-4	KLS-5	KLS-6	KLS-8	KLS-10
Type	trailed				
Operational width, m	4	5	6	8	10
Operational depth, mm	up to 150				
Coulters type - forged / arrow type	+ / +				arrow/disc
Coulters, pcs	26	40	48	64	80
Coulter width, mm	50 or 140				
Front crossboard row	standard				
Front and rear roller type	single steel disc				
Rollers diameter, mm (front and rear)	500			700	
Wheels	400/60-15.5	600/50-22.5		710/45R22.5	
Transportation width, m	2,5		3	3,5	
Mass, kg	4700	6500	7450	8500	10400
Min. tractor power, HP	160	190	220	300	350
BASE PRICE	26530€	28670€	31830€	37140€	44600€

STANDARD EQUIPMENT



KLS-4



KLS-5



KLS-4



KLS-10



KLS-5



KLS-10

SOIL LEVELERS

(Laumetris holds the rights to change any specifications, components, prices at any given time)

Model	LLK-7	LLK-8	LLK-9
Type	mounted		
Operational width, m	5 / 7	6 / 8	7 / 9
Operational depth, mm	up to 100		
Coulters, pcs	31 / 44	38 / 50	44 / 56
Coulters spacing, mm	320		
Harrows, units	5 / 7	6 / 8	7 / 9
Transportation width, m	3		
Mass, kg	1700 / 1900	1800 / 2000	1900 / 2100
Min. tractor power, HP	150 / 180	180 / 240	240 / 280
BASE PRICE	7960€	9030€	10100€
Rear spring tines instead of harrows	950€	1050€	1200€

STANDARD EQUIPMENT



LLK-9



LLK-9



LLK-7



LLK-9



LLK-9

WINTER RAPESEED STRIP TILL DRILL

(Laumetris holds the rights to change any specifications, components, prices at any given time)

Model	RSL-2.5	RSL-3.0	RSL-3.5	RSL-3.5T	RSL-4.0
Type		mounted		trailed	mounted
Sowing width, m	2,5	3,0	3,5		4,0
Sowing depth, mm	10-20				
Operational tines depth, mm	up to 300				
Tines, pcs	5	6	7		9
Tines track spacing, mm	500				444
Tines type	straight flatliner tine				
Tines protection	hydro-pneumatic				
Front disc cutting before tine, pcs	5	6	7		9
Presice sowing through discs, pcs	5	6	7		9
Rear roller type	U type ø600 mm			wheels ø750 mm	U type ø600 mm
APV pneumatic seeder with 7-pin cable sensor	PS120 M1				
Mineral or liquid fertilization system with hydraulic motor (manual control)	mineral fert. - 800 kg / liquid - 1100 ltr			mineral fert. - 1200 kg / liquid - 1500 ltr	
Transportation width, m	2,95	3,05	3,5		3,85
Mass, kg	2600	2900	3200	3600	3650
Min. tractor power, HP	160-200	180-210	200-250	180-250	265-315
BASE PRICE + APV seeder	35550€	37650€	41070€	46370€	46730€
Radar or GPS sensor for APV seeder	1000€ (7 pin cable is included in standard set)				
Automatic rate control for mineral / liquid fertilization system	1000€ through APV control box 5.7, electric motor				
Additional mineral/liquid fertilization system	6000€ with hydraulic motor + 2000€ for electric motor with automatic rate control				
Chemical granular APV spreading	MDP 40 - 4000€ (with hoses for every strip) / KS40 - 1500€ (spreader type)				
Special steel pressing wheels for seeds	250 €/unit				
Trailed version		3000€		standard	3000€
Wheel type roller, ø750 mm		2000€		standard	3600€

Laumetris wear point with 2 carb. inserts - 90€/pc, with 14 carb. ins. - 140€/pc / Seeding section - 800€/pc + 1500€/pc connection bar / Cutting disc section - 450€/pc



2020 03 22

After 2019 season - 180 ha



U type ø600 mm rings roller



RSL-3.5 + mineral fertilization system

WINTER RAPESEED STRIP TILL DRILL

(Laumetris holds the rights to change any specifications, components, prices at any given time)

Model	RSL-4.0T	RSL-4.5	RSL-4.5T	RSL-5.5T
Type	trailed	mounted		trailed
Sowing width, m	4,0		4,5	5,5
Sowing depth, mm			10-20	
Operational tines depth, mm			up to 300	
Tines, pcs		9		11
Tines track spacing, mm	444		500	
Tines type		straight flatliner tine		
Tines protection		hydro-pneumatic		
Front disc cutting before tine, pcs		9		11
Presice sowing through discs, pcs		9		11
Rear roller type	wheels ø600 mm	U type ø600 mm		wheels ø600 mm
APV pneumatic seeder with 7-pin cable sensor		PS120 M1		
Mineral or liquid fertilization system with hydraulic motor (manual control)	mineral fert. - 1200 kg / liquid - 1500 ltr		mineral fert. - 1600 kg / liquid - 1500 ltr	mineral fert. - 1600 kg / liquid - 1900 ltr
Transportation width, m	3,85		4,4	4,0
Mass, kg	4150	3750	4500	6000
Min. tractor power, HP	250-300	280-320	260-310	350-400
BASE PRICE + APV seeder	53670€	47750€	54740€	62600€
Radar or GPS sensor for APV seeder	1000€ (7 pin cable is included in standard set)			
Automatic rate control for mineral / liquid fertilization system	1000€ through APV control box 5.7, electric motor			
Additional mineral/liquid fertilization system	6000€ with hydraulic motor + 2000€ for electric motor with automatic rate control			
Chemical granular APV spreading	MDP 40 - 4000€ (with hoses for every strip) / KS40 - 1500€ (spreader type)			
Special steel pressing wheels for seeds	250 €/unit			
Trailed version	standard	3000€		standard
Wheel type roller, ø750 mm	standard	3600€		standard
Laumetris wear point with 2 carb. inserts - 90€/pc, with 14 carb. ins. - 140€/pc / Seeding section - 800€/pc + 1500€/pc connection bar / Cutting disc section - 450€/pc				

RSL-3.5 + 1200 kg mineral fertilization system



UNIVERSAL STRIP TILL DRILLS RS NEW EDITION WITH Müller-Elektronik (Trimble) ISOBUS CONTROL

(Laumetris holds the rights to change any specifications, components, prices at any given time)

Model		RS-3	RS-4
STANDARD EQUIPMENT	Type	trailed	
	Sowing width, m	3,0	4,0
	Operational tines depth, mm	up to 280	
	Tines, pcs	9	11
	Seeding row distance for wheat, cm	19 / 14 - sowing strip width	22 / 14 - sowing strip width
	Seeding row distance for rapeseed, cm	33	36
	Tines type	straight flatliner tine	
	Tines protection	hydro-pneumatic	
	Front disc cutting before tine, pcs	9	11
	Presice sowing through coulters, pcs	9	11
	Rear roller type	wheels - 10.0/70-15.3	
	Seeding unit	Laumetris made hopper with Mistral dosing, distribution, fans system and Bourgault seeding sweeps, capacity - 1600 ltr grains library for easier calibration	
	Automatic sowing rate control	Müller-Elektronik (Trimble) through ISOBUS terminal	
	Tank for mineral fertilization, capacity/rate	up to 1200 kg / 50-300 kg/ha (with automatic rate control)	
	Tramline control	+	
	Blockage sensors of every hose	+	
Min. tractor power, HP	240	280	
BASE PRICE + mineral tank		66800€	75400€
ADDITIONAL OPTIONS	Trimble monitor if ISOBUS socket exists	4300€	
	Trimble monitor if ISOBUS socket doesn't exist	5100€	
	Camera for streaming of a seeding section to terminal	700€	
	Liquid fertilizing system (50-300 ltr/ ha rate)	1000 ltr - 7300€ / 1500 ltr - 7500€	
	Blockage sensors for fertilizing system	3400€	4000€

2024 05 21 Kedainiai region, R. Špokas farm



2024 08 23 Lazdijai, Lithuania



RS-4 with TRIMBLE ISOBUS control



2024 08 23 Lazdijai, Lithuania



2022 09 26



RS-4 (previous edition)



Hardox tine with carbide wear point

SUBSOILERS

(Laumetris holds the rights to change any specifications, components, prices at any given time)

Model	DPL-3L	DPL-4L	DPL-3L	DPL-4L	DPL-6L
Type / Connection type	mounted / III category				
Sowing width, m	3,0	4,0	3,0	4,0	6,0
Operational tines depth, mm	up to 300				
Tines, pcs	6	8	5	6	14
Tines track spacing, mm	500		600		450
Tines type	straight flatliner tine				
Tines protection	hydro-pneumatic				
Front disc cutting before tine, pcs	6	8	5	6	14
Transportation width, m	2,6	3,6	2,6	3,7	3,0
Mass, kg	1240	1450	1150	1350	2800
Min. tractor power, HP	140-180	200-260	130-180	200-260	280
BASE PRICE + APV seeder	10820€	14500€	9450€	13250€	24500€
600 mm diameter ring U type roller	1550€	1800€	1550€	1800€	-

STANDARD EQUIPMENT



LIQUID FERTILIZING SYSTEMS

(Laumetris holds the rights to change any specifications, components, prices at any given time)

Modelis		LF-1100	LF-1500	LF-1900
STANDARD EQUIPMENT	Type / Connection type	mounted in tractor's front		
	Capacity, m ³	1,1	1,5	1,9
	Impact of chemicals and fertilizers	resistant		
	Tank material	special polyethylene plastic		
	Powering type	hydraulic motor		
	Spraying/fertilizer rate with a hydraulic motor	50-500 l/ha		
	Spraying/fertilizer rate with an electric motor	2-20 l/min / 20-100 l/ha		
	Control system	manual control through hydraulic motor		
	Distribution system	four way distributor to supply 3 sections of tillage machine		
	Mass, kg	1240	1450	2150
Additional tank		100l clean water for tank cleaning ir 20 l for handwashing		
PRICE (no automatic rate control, no sensor to shutdown when lifted)	hydraulic motor	7250€	7450€	7750€
Control unit for system's turn on/off + pressure control + manometer	hydraulic motor	7750€	7960€	8260€
Arag Bravo 180 S control with variable rate (no sensor to shutdown when lifted)	hydraulic motor	8880€	9100€	9400€
Arag ISOBUS control with variable rate + maps (sensor to shutdown when lifted)	electric motor	9900€	10100€	10400€
APV 5.2 control with variable rate + 7 pin speed sensor (sensor to shutdown when lifted)	electric motor	7960€	8570€	8980€
APV 5.2 control with variable rate + GPS/radar speed sensor (sensor to shutdown when lifted)	electric motor	9100€	9600€	10000€
Nozzle for output on the seeder (housing, filter, nozzle, hose, stainless steel bolt)		50€		



LF-1500 connected to Horsch Focus 4 TD seeder



LAUMETRIS
SINCE 1993

CONTACTS

LAUMETRIS Ltd.
Technikos st. 5, Keleriškių vill.,
Kėdainių dist., Lithuania, 57342

Mob. 00 370 630 48320
Ph./Fax: 00 370 347 42390

sales@laumetris.lt
2026v01W

www.laumetris.lt