

ACCENT LIGHTING
TOUCHSTONE[®]



Personalize Your Property

TouchStoneLights.com



TouchStone manufactures premium landscape lighting fixtures that are built to last. We have developed a comprehensive line of outdoor fixtures designed to enhance the unique features of your home, including architectural elements, gardens, trees, fences, dock, decks and outdoor living spaces. With over 35 years of experience in designing and installing custom lighting for residential and commercial projects of all scales and budgets, we specialize in solutions that beautifully illuminate the outdoors.

Our approach utilizes indirect dark skylighting techniques, professional-grade U.S. fixtures, and mounting systems to ensure you enjoy your outdoor space at night. From deck lighting to path lighting, flood lights and hardscape lighting, our energy efficient are designed for longevity. Let us help you expand your living space from dusk to dawn.

Our team of expert illuminologists is ready to elevate your yard to the next level. We offer exclusive visual lighting plans and full-service installation, backed by a proven track record of success and longevity in the outdoor lighting industry. Contact an illuminologist today for a free consultation and discover the best lighting ideas to brighten your outdoor spaces. Consultations are available in person or via email.



TouchStone fixtures are designed, finished and Made in Minnesota, USA.



More Outdoor Enjoyment.

● Garden & Walkway series	
Coppertino, Commino, Centini, Centino, Del Otero, Loo, Maxwell 9, Zumbra	3
● Flood series	
BrassFloods, MiniFlood, UniFlood, ColorFlood, PARFlood, WideFlood, WellFlood	16
● Hardscape series	
Hardscape WellFlood series, Bullet series, Ledge series	24
● Outdoor Living series	28
Dakota, Post & Pipe, LEDGE BAR, Hanging Copper, Fence & Sconce, Donovan, Light My Grill, BistroLight, TapeLight, Moon series, LumaFlex	
● Water series	
BrassSubmersible, WATERRACK, SNAIL	37
● Replacement Parts	40
● Transformers	41
● Timers, Cables, Connectors & Accessories	42
● LED S MR8, MR11, MR16, PAR36, Miniature, Colored LEDs	43





Sidewalk Lighting with Coppertinos



Flower Garden Lighting with Maxwells



Boulder Lighting with Commimos



Walkway and Step Lighting with Coppertinos



Sidewalk Lighting with Loos



Stairway Lighting with Commimos

Having a well-lit sidewalk is important for the safety and security of your home. TouchStone offers quality American-made fixtures with styles that will beautifully complement your landscape and home providing indirect light at night.

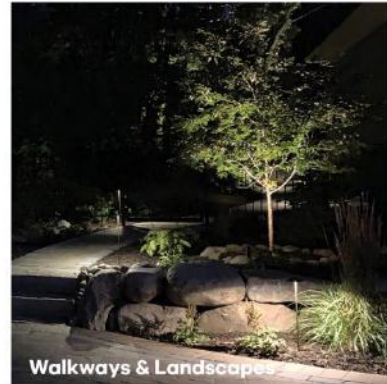
Garden Lighting | Walkway Lighting | Accenting Boulders & Landscapes

Features

- 12 volt AC/DC
- Changeable 2w, 2700K, G4, 9v-17v, Ceramic **LED**
- Housing options: copper, stainless-steel/powder coat or RustSteel
- Stainless-steel fasteners
- 8" SuperStake
- 24" 18/2 fixture leads
- Solid aluminum riser boot with dual set screws
- Casts up to 15 ft. dia. of light
- Horizontal mounted LED, no light pollution
- GX5.3 bi-pin porcelain lamp socket
- Accepts 1/2" NPT hardware
- 3 year warranty LED
- Lifetime housing warranty
- Made in U.S.A.



Includes 2 watt Ceramic **LED**
2700K warm white, 180 lumen



Walkways & Landscapes



Intertek
5011251

- Dimensions 4" dia. hood, x 3/8" x 24" tall riser stem



Pool Areas & Boulders



Steps & Stairways



Flower Gardens



Copper



SandStone



RustSteel



BlackTex

Sleek and simple styling casts up to 15 ft. dia. of light. One-piece construction requires no assembly. Features our "Off-set/Open face" design for greater downward illumination and no light pollution. Removable riser boot allows for optional riser heights. Available in raw copper, stainless-steel, stainless with powder coat with aluminum riser boot (limited-lifetime warranty), steel with Rust/Steel finish (10 year limited warranty) or the extra heavy-duty G584**HD** Copper featuring a 5/8" dia. x 28" tall riser stem that casts up 22 ft. dia. of light. For larger flower gardens, the G384/ADJ series adjusts from 24" to 48" tall.

Coppertino **G384** series

Made in USA 

Garden Lighting | Walkway Lighting | Accentina Boulders & Landscapes



G384C
Copper/C
3/8" X 24" riser



G384C/ADJ
Adjusts 24" - 48"



Copper

RedRock/RR

ArchBronze/
ARBZ

RustSteel/RS

Stainless-Steel/SS

G584C-HD
5/8" x 28" riser



Includes 2 watt Ceramic **LED**
2700K warm white, 180 lumen



Standard
PS8-F SuperStake



Garden Lighting | Walkway Lighting | Accenting Boulders & Landscapes

Durable and inconspicuous, the Commino is an excellent choice for illuminating larger landscape areas, boulders and taller plants. Features our exclusive "Off-set/Open face" design for greater downward illumination and no light pollution. Features interchangeable LEDs for maximum nighttime effects and design flexibility. Great for commercial applications too!

Features

- 12 volt AC/DC
- Changeable ip65, 3w, 2700K, G4 Ceramic LED
- Housing options: copper, stainless-steel/ powder coat or RS/RustSteel
- Stainless-steel fasteners
- 8" SuperStake, Optional 18" SuperStake
- 24", 18/2 SPT-1W fixture leads
- Solid aluminum riser boot
- Casts up to 22ft. dia of light
- Horizontal mounted LED, no light pollution
- GX5.3 bi-pin porcelain lamp socket
- Accepts 1/2" NPT hardware
- 3 year warranty LED
- Lifetime housing warranty, 10 year RS series
- Made in U.S.A.

- Dimensions 6" dia. hood, 5/8" x 28" tall

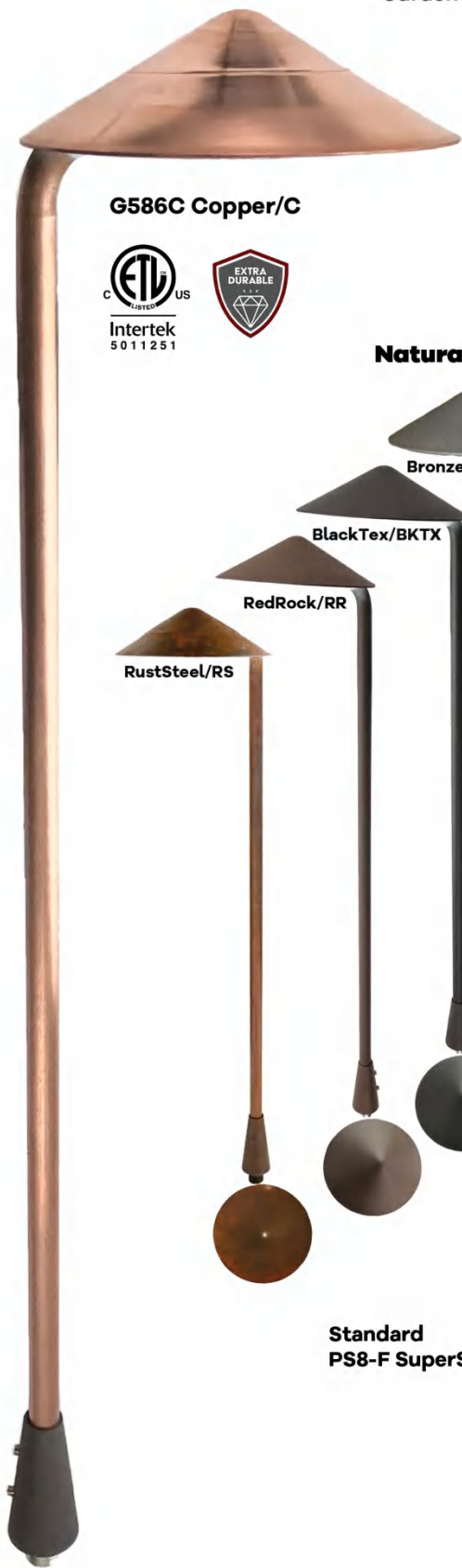


Standard 3 watt, 280lm Ceramic LED,
4 watt, 320lm optional



Casts up to 22ft. dia. of light. Recommended spacing: 20'-30'





G586C Copper/C



Intertek
5011251



Includes 3 watt Ceramic **LED**
2700K warm white, 280 lm

4 watt, 320lm Ceramic **LED**
upgrade



Natural Metal and Powder Coat Color Options



Fixture Ground Stakes

Standard
PS8-F SuperStake



For maximum fixture support, the
SuperDuty SSAL 12" and 18"
Aluminum SuperStakes.

**Optional
Metal SuperStakes**

PART **SSAL12**

PART **SSAL18**

Walkways | Landscapes & Gardens | Driveways

The Centini 484 series is a great choice for lighting low or no vegetation areas, smaller patios, walkways and driveways. The compact size is great for smaller areas that need accent lighting. Features 2 watt interchangeable ceramic LED for maximum nighttime effects and design flexibility.

Features

- 12 volt AC/DC
 - Interchangeable G4, 2w ceramic LED
 - 304 stainless steel hood with powder coat finish
 - Stainless-steel finial & fasteners
 - 6063 Aluminum Riser Boot and Yoke
 - 8" SuperStake
 - 24", 18/2 SPT fixture leads
 - Casts up to 12ft. dia of light
 - Tool-less hood removal
 - GX5.3 bi-pin porcelain lamp socket
 - Accepts 1/2" NPT hardware
 - Lifetime housing warranty
 - Made in USA
- Dimensions 4" dia. hood, 1/2" dia. x 13" tall riser stem



**Tool-less
Top Removal**



G4LED
1 or 2 watt Ceramic LED
2700K warm white,
110 or 180 Lumen



**Standard
PS8-F SuperStake**

**GC484
BKTX/BlackTex**



ARBZ/ArchBronze



BKTX/BlackTex



BS/BlueStone



BZT/BronzeTex



GG/GravelGray



RR/RedRock



SS/SandStone



C/Raw Copper



The Centino **HD** series is the perfect fixture for pool areas, any high traffic landscape areas and commercial applications. Features interchangeable 2w or 3w Ceramic **LED** for maximum nighttime effects.



GC106/ARBZ

Powder Coat Color Options



BlackTex/BKTX



SandStone/SS



RedRock/RR



BlueStone/BS



GravelGray/GG



ArchBronze/ARBZ



BronzeTex/BZT



Includes 3 watt Ceramic **LED**
2700K warm white, 280 lm



GC106/BKTX TwoTone

Features

- 12 volt AC/DC
- Changeable G4 bi-pin 2 or 3 watt Ceramic **LED**
- Stainless steel hood & riser with aluminum finial & yoke
- Variety of EarthTone powder coat finishes
- Stainless-steel set screws
- 8" SuperStake
- 36", 18/2 SPT fixture leads
- Adjustable riser boot
- Casts up to 12ft. dia of light
- Sealed lens housing
- Tool-less hood removal
- GX5.3 bi-pin porcelain lamp socket
- Accepts 1/2" NPT hardware
- 3 year warranty LED
- Lifetime housing warranty
- Made in USA

- Dimensions 6" dia. hood, 1" x 20" tall riser stem



Fixture Ground Stakes

Standard PS8-F SuperStake



Optional Metal SuperStakes

- PART **SSAL12**
- PART **SSAL18**



For maximum fixture support, the SuperDuty SSAL 12" and 18" Aluminum SuperStakes.



Walkways | Landscapes & Gardens | Driveways

TouchStone Centino series fixtures are constructed of machine spun aluminum yokes and risers with a heavy-duty stainless steel hood. Available in your choice of a variety earth tone powder coat finishes. The Centino series blends great with any landscape setting. Perfect for illuminating walkways, steps and landscapes. Interchangeable 2 or 3 watt Ceramic **LED** for maximum nighttime effects and design flexibility.

Features

- 12 volt AC/DC
- Interchangeable G4 bi-pin 2w Ceramic **LED** included
- Stainless steel hood, aluminum riser, finial & yoke
- Variety of powder coat finishes or raw copper
- Stainless-steel set screws
- 8" SuperStake
- 36", 18/2 SPT fixture leads
- Adjustable riser boot
- Casts up to 12ft. dia of light
- Sealed lens housing
- Tool-less hood removal
- GX5.3 bi-pin porcelain lamp socket
- Accepts 1/2" NPT hardware
- Lifetime housing warranty
- 3 year warranty LED

Dimensions

GC586-6" dia. hood, 5/8" x 20" tall riser stem
GC585F-5" dia. hood, 5/8" x 20" tall riser stem



**Tool-less
Top Removal**



ARBZ/ArchBronze



BKTX/BlackTex



BS/BlueStone



BZT/BronzeTex



GG/GravelGray



RR/RedRock



SS/SandStone



C/Raw Copper

GC586
BKTX/BlackTex



GC585F
BKTX/BlackTex



**Standard
PS8-F SuperStake**



Classic Garden Lighting & Walkway Lighting

Classic styling casts up to a 12-ft. diameter of light. One-piece construction requires no assembly. Features our "Off-set/Open face" design for greater downward illumination, easier lamp replacement and no light pollution.



G390/C
Copper

Natural Copper

Features

- 12 volt AC/DC
- Changeable G4 bi-pin 2w Ceramic **LED**
- Raw copper
- 8" SuperStake
- 24", 18/2 SPT fixture leads
- Casts up to 12 ft. dia of light
- Recessed mounted LED, no light pollution
- GX5.3 bi-pin porcelain lamp socket
- Accepts 1/2" NPT hardware
- 10 year housing warranty
- Dimensions 6" dia.hood, x 1/2" x 22" tall riser stem

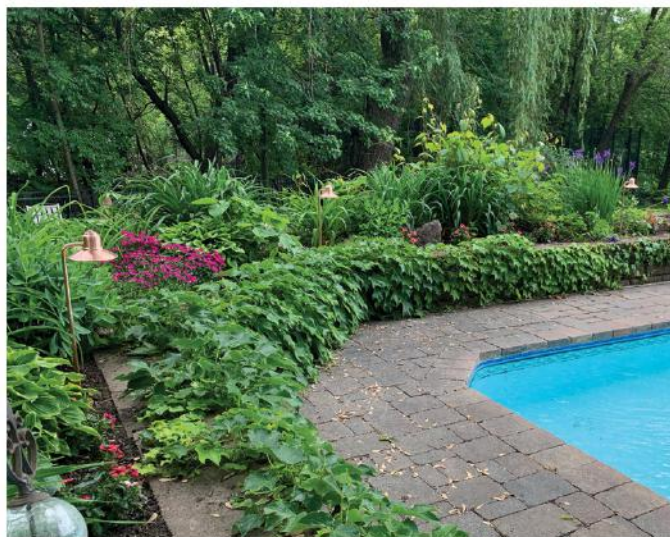


Standard
PS8-F SuperStake



G4LED

premium 2 watt Ceramic **LED**
ip65, 2700K warm white, 180 lumen



The Loo series features a sealed lens compartment with interchangeable LED. Constructed from 6063 aluminum and stainless steel fasteners make the Loo fixtures extremely durable. For high traffic areas you might want to consider using our 12" SuperStakes for superior fixture mounting and stability.

GL246

Features

- 12 volt AC/DC
- Interchangeable G4, 3w Ceramic LED, 2700K
- Clear poly lens
- Stainless-steel fasteners
- 6063 Aluminum housing
- Aluminum end cap, coupler block & riser
- 36", 18/2 SPT fixture leads
- 8" SuperStake
- 5 year warranty LED
- Lifetime housing warranty



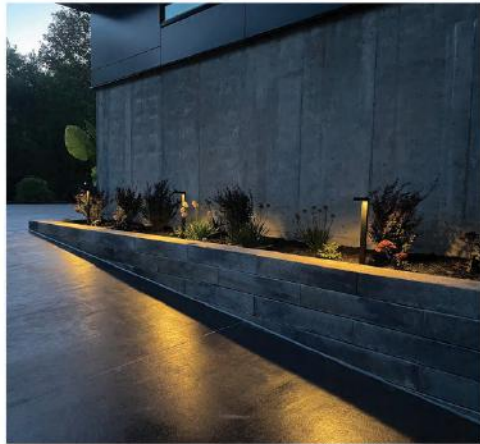
3w Ceramic LED
280 lumens/2700K



GL246
BKTX/BlackTex



Standard
PS8-F SuperStake



ARBZ/ArchBronze



BKTX/BlackTex



BS/BlueStone



BZT/BronzeTex



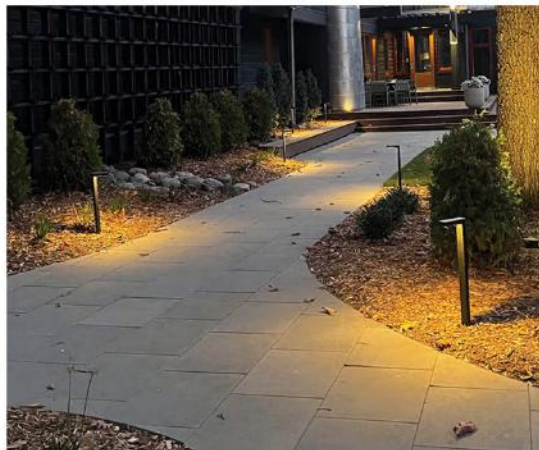
GG/GravelGray



RR/RedRock



SS/SandStone



Metal SuperStakes

PART SSAL12

PART SSAL18

For maximum fixture support, the SuperDuty SSAL 12" and 18" Aluminum SuperStakes.



Maxwell 9 GC910 series

Gardens | Walkways | Accenting Landscapes

The heavy-duty Maxwell GC910 series is a great choice for lighting in tall vegetated garden areas and large landscaped areas. Features changeable 3 watt or 4 watt ceramic LED for maximum nighttime effects and design flexibility.

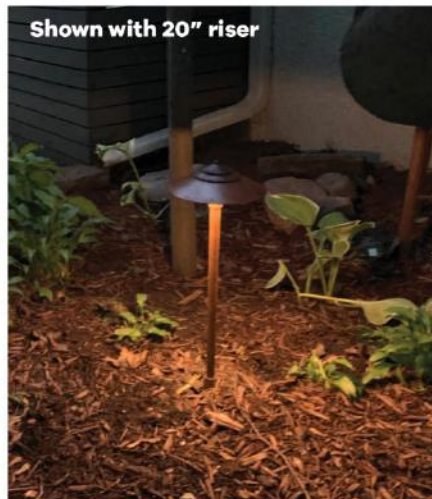
Features

- 12 volt AC/DC
- Interchangeable G4 bi-pin 3w ceramic LED
- Raw copper top, or RustSteel
- Stainless-steel set screws
- 12" SuperStake
- 1" O.D. x 28" aluminum riser
- 24", 18/2 SPT fixture leads
- Aluminum riser boot for custom fixture height options
- Casts up to 20ft. dia of light
- Tool-less hood removal
- GX5.3 bi-pin porcelain lamp socket
- Accepts 1/2" NPT hardware
- 3 year warranty LED
- Lifetime housing warranty-copper, 10 year on RS series
- Dimensions 9" dia. hood, 1" x 28" tall riser stem
- Made in USA and global sourced .



G4LED Standard
3 watt ceramic LED-std
2700K warm white, 280 lumen

Optional
4 watt LED ceramic LED-optional
2700K warm white, 320 lumen



Gardens | Walkways | Accenting Landscapes

The heavy-duty Maxwell GC910 series is a great choice for lighting in tall vegetated garden areas and large landscaped areas. Features changeable 3 watt or 4 watt ceramic LED for maximum nighttime effects and design flexibility.

Features

- 12 volt AC/DC
- Interchangeable G4 bi-pin 3 or 4 watt LED ceramic **LED**
- Raw copper with raw brass finial & yoke
- 7 powder coat finishes
- Stainless-steel fasteners
- 8" SuperStake
- 24", 18/2 SPT fixture leads
- Adjustable riser boot
- Casts up to 18ft. dia of light
- Sealed lens housing
- Tool-less hood removal
- GX5.3 bi-pin porcelain lamp socket
- Accepts 1/2" NPT hardware
- 3 year warranty LED
- Lifetime housing warranty

Dimensions:

model **GC710**-7" dia. hood, 1" x 20" riser stem

model **GC9510**-9-1/2" di. hood, 1" x 32" riser stem



Standard
3 watt ceramic LED-std
2700K warm white, 280 lumen

G4LED
-Optional 4 watt LED
2700K warm white,
320 lumen



Standard
PS8-F SuperStake



Optional
SSAL12
SuperStake



Walkways | Driveways | Yard Art | Residential and Commercial

The **ShadowBollard** series fixtures are designed to accent your landscape with stunning shadow designs while adding a focal point of interest in your landscape during the day and night! Constructed from steel, the **ShadowBollards** feature our mission lantern design. Each fixture is laser cut with precision to create these extremely durable fixtures.



ShadowBollards

Features



- 12v 2w Ceramic G4in models 2x2, 4x4
- 5w, 100° MR16 LED in model 6x6
- 2700K, warm white
- Mounting tube stake on 2" and 4" models
- RustSteel/RS or Black/BK or Bronze/BZ powder coat finish
- Includes mounting hardware
- Lifetime warranty housing
- 3 years LED

Dimensions

- 2x2- 2" w x 2" d x 24" t
- 4x4- 4" w x 4" d x 25" t
- 6x6- 6" w x 6" d x 42" t

Color Options

Available in RustSteel, BlackTex or ArchBronze



model 2x2



model 4x4



model 6x6



MR16LED
MR16, 7 watt, 100°, warm white/2700K, 720 lumen

ACCENT LIGHTING
TOUCHSTONE[®]



Downlight driveways, A212- 3w 100°

FLOOD

 series

Wall Wash, A233- 5w 100° , Uplighting A224- 7w 60°



Hardscape Uplighting HS240/F- 3w 100°



Color Change PAR36 LED in A236 & A216



Sport Court Lighting A216- 17w 100° 4000k



Wall Wash A233- 5w 100°

TouchStone's Flood series fixtures are constructed of solid cast brass with patina or aluminum with a variety of powder coat finishes. All of our Flood series fixtures feature interchangeable premium quality LED bulbs for maximum design flexibility and serviceability. We offer fixtures suitable for a wide range of applications, including wall washing, sport court lighting, hardscape lighting and color changing options. Our complete series of flood fixtures, ranging from Mini Floods to PAR Floods is designed to make your project shine brightly at night.

MiniFlood/MR11 **A195** series

Assembled in USA

Accent Lighting | Uplighting | Outdoor Living Areas

The **MiniFlood** fixture offers powerful lighting in a compact size. Ideal for address marking, signs, pergolas, cactus, columns, flags and small trees. Versatile mounting accessories allow for surface mounting and fixture elevation. Our **MiniFlood** series features interchangeable MR11 LED 2.5w maximum nighttime effects and design flexibility.

Features

- 12 volt AC/DC
- Interchangeable MR11 LED 2.5w 30°, 60° or 120° options
- Aluminum housing with 8 powder coat finishes
- Stainless-steel & brass fasteners
- 8" SuperStake
- 36", 18/2 SPT fixture leads
- Glass lens
- Adjustable visor
- Silicone gaskets
- GX5.3 bi-pin lamp socket
- Accepts 1/2" NPT hardware
- 3 year warranty LED
- 10 year housing warranty
- Dimensions 1-5/8" dia. x 5" tall



MR11LED
premium grade
2.5w 2700K
30°, 60° or 120° options



A195/BZT
BronzeTex



Standard PS8-F SuperStake

ARBZ/ArchBronze



BKTX/BlackTex



BS/BlueStone



BZT/BronzeTex



GG/GravelGray



RR/RedRock



SS/SandStone



ColorFlood **A213** series

Accent Lighting | Uplighting | Architectural Lighting

The **ColorFlood** fixture offers powerful lighting with easy to use color change and dimming capabilities. Download the apple/android app and your in control! Sync multiple fixtures as a group or individually. flexibility.

Features

- 12 volt AC/DC
- 0-15w integrated WWRGB tunable LED
- Aluminum housing with BlackTex powder coat finish
- Bluetooth smart control with fixture reset
- 8" SuperStake
- 36", 18/2 SPT fixture leads
- Glass lens
- Adjustable visor
- 0-800lm dimming
- 24/36/60° beam lens options
- Accepts 1/2" NPT hardware
- 5 year warranty LED
- 10 year housing warranty
- Dimensions 2-7/8" dia. x 8" tall

A213/BKTX
BlackTex



UNIFlood/MR16

Made in USA

model **A224** **TOUCHSTONE**

Accent Lighting | Up Lighting | Architectural Lighting

The USA UNIFlood MR16 is great for uplighting trees, architecture, wall washing and sculptures. Versatile mounting accessories allow for surface mounting, fixture risers, "L" coupler for walkways and stairways or the "T" coupler for dual fixture mounting on signage and washing larger tree lines. The UNIFlood series features interchangeable MR16 LEDs bulbs for maximum nighttime effects and design flexibility.

Features

- 9-17 volt AC/DC
- Locking knuckle with 15° increments
- Interchangeable MR16-3w, 5w or 7w LEDs
- Machined 6063 aluminum housing with powder coat finish
- Stainless-steel fasteners
- Threaded front end assembly
- 8" SuperStake
- 36", 18/2 SPT fixture leads
- Domed or flat front glass lens
- Adjustable & extendable visor
- O-Ring gasket
- GX5.3 bi-pin porcelain lamp socket
- Accepts 1/2" NPT hardware
- 5 year warranty LED, 50,000 hr. life span
- Lifetime housing warranty
- Made in USA

- Dimensions 2-1/2" dia. 7-1/2" tall



ArchBronze/ARBZ



BronzeTex/BZT



RedRock/RR



BlackTex/BKTX



SandStone/SS



Screw off front housing with adjustable visor

premium grade

MR16LED

- IP65
- CRI-85
- Life Span 50,000 hours
- 3w320lm, 2700k
- 5w450lm, 2700k
- 7w/550lm, 2700k
- 30°, 60° or 100° beam angle options



Locking knuckle

A224/BKTX
BlackTex



Includes
PS8-F SuperStake



Optional
4" Surface Mount
PART PFMB4



Optional
HEAVY-DUTY
18" SuperStake

PART SSAL18
For maximum fixture stability, the SuperDuty SS2AL18, 18" Aluminum SuperStake.



Optional
part **P224/R18AL**
1" x 18" powder coated riser
ARBZ finish shown



MiniBrassFlood/MR8 **A185BR** series

Architectural | Sculptures & Signage

The MiniBrassFlood/8 series is available in 2 compact sizes. Both models produce bright, warm effects with our premium grade LEDs. These fixtures are designed for highlighting smaller trees, shrubs and architectural features, pergolas and address markings.

Features

- 12 volt AC/DC
- MR8 2.5w, 2700K LED
- 38°, 60° Or 120° beam options
- Solid Brass with dark patina
- Tool-less adjustment knobs
- 8" SuperStake
- 36", 18/2 SPT fixture leads
- Operating voltage 9v-17v
- Accepts 1/2" NPT hardware
- 3 year warranty LED
- Lifetime housing warranty
- Dimensions 2" dia. x 6" tall



A185BR MiniBrassFlood/8

Solid brass dark patina
MR8 2.5watt LED, 160lm



MR8LED

premium grade
2.5watt MR8 LED, 160lm



Part #PGMK
Gutter fixture mount bracket
great for dormer and peak lighting

Standard
PS8-F SuperStake



MiniBrassFlood/MR11 **A195BR** series

Uplight Small Trees & Cactus | Wall Washing | Architectural | Sculptures & Signage

Features

- 12 volt AC/DC
- MR11 2.5w, 2700K LED
- 38°, 60° Or 120° beam angle options
- Solid Brass with dark patina
- Tool-less adjustment knobs
- 8" SuperStake
- 36", 18/2 SPT fixture leads
- Operating voltage 9v-17v
- Accepts 1/2" NPT hardware
- 3 year warranty LED
- Lifetime housing warranty
- Dimensions 2-1/4" dia. x 6" tall



A195BR MiniBrassFlood/11

Solid brass dark patina
MR11 2.5watt LED, 180lm



MR11LED

premium grade
MR11 2.5watt LED, 180lm



BRASS Flood/MR16

A214
series



Accent Lighting | Uplighting | Architectural | Downlighting

The **BrassFlood** series is great for uplighting trees, home architecture, and sculptures. Versatile mounting accessories allow for surface mounting, fixture risers, "L" coupler for walkways and stairways or the "T" coupler for dual fixture mounting on signage and washing larger tree lines. Our **BrassFlood** series features interchangeable MR16 LEDs.

Features

- 12 volt AC/DC
- Interchangeable MR16-3w, 5w or 7w LEDs
- Solid Brass with dark patina
- Stainless-steel fasteners
- Threaded front end assembly
- 8" SuperStake
- 36", 18/2 SPT fixture leads
- Domed Glass lens
- Adjustable visor
- Silicone gaskets, seals & bug plug
- GX5.3 bi-pin porcelain lamp socket
- Accepts 1/2" NPT hardware
- 3 year warranty LED
- Lifetime housing warranty



premium grade MR16LED

- 3 watt/220lm, 2700k
 - 5 watt/550lm, 2700k
 - 7 watt/750lm, 2700k
- 30°, 60° or 100° beam angle options



A214
Brass
Dark Brown Patina



● Dimensions 2-1/2" dia. 7-1/8" tall



Standard
PS8-F SuperStake

TREEFlood

model **A214TK/50**

DOWNLight

Tree mount fully assembled with 50' leads, UV tie straps, S/S screws. Includes 3w, 5w or 7w 100° WW/2700K LED



Fixture Mounting Accessories for A185, A195, A214, A216, A224, A233 series



part **PGMK-BR**
Gutter Mount Bracket



part **P214C**
Brass Coupler



part **P214LC**
Brass "L" coupler



part **FMB2BR**
2" Brass surface



part **P214TC**
Brass "T" coupler

part **P214R18-BR**
1" x 18" brass with dark brown finish.
For A214/A216/A233 series.

Up Lighting Large Trees | Wall Washing | Architectural | Flags, Sculptures and Signs | Sport Lighting

The **PARFlood** series is great for uplighting large trees, large architecture, flags, signage and sculptures. Allows for use with our PAR36 ColorChange WRGB LED option.

Features

- 12 volt AC/DC
 - Dimming-10%-100% settings
 - Solid Brass with dark patina
 - Stainless steel fasteners
 - 8" SuperStake
 - 36", 18/2 SPT AWG fixture leads
 - Glass front
 - 10w/500lm 2700k, 13w /700lm, 17w/950lm 2700k or 17w 1150lm 4000k for flag poles
 - Operating voltage 12v-17v
 - Optional Bluetooth WRGB LED controlled as a group or individually
 - Accepts 1/2" NPT hardware
 - 3 year warranty LED
 - Lifetime housing warranty
- Dimensions 4-3/4" dia. x 7-3/4" tall

A216/BR

Solid brass dark patina



PAR36 LED Options

- 10w/800lm/2700k/4000K
- 13w/1130lm/2700k/4000K
- 17w/1300lm/2700k or 5000k
- 10watt WRGB Bluetooth



part **FMB2BR**
2" Brass surface



part **P214C**
Brass Coupler



part **R15BR**
1" x 15" brass or powder coated riser



Metal SuperStakes

- PART **SSAL12**
- PART **SSAL18**

For maximum fixture support, the SuperDuty SS2AL 12" and 18" Aluminum SuperStakes.

Standard PS8-F SuperStake



Up Lighting | Wall Washing Lighting | Architectural Lighting

The Landscape Well series is great for uplighting trees, flags, home architecture, wall washing and sculptures. Features interchangeable LEDs and 3 different front face options for maximum nighttime effects and design flexibility.

model **LW510** series

model **LWi510** series

models **LW340 FF/L/HM**

Flat Front



Incline Front



25° Angle Adjustability



PAR36LED

10w 38°, 60° or 120°, 2700K
13w 38° or 60°, 2700K
17w 38°, 60° or 120°, 2700K
17w 15° 5000k



LW510 & LWi510 Features

- 12 volt AC/DC
- PAR36 10w, 13w or 17w LED
- Includes glass lens for the flat end and plastic lens for angled end of the fixture
- Stainless-steel fasteners & brackets
- PVC housing
- Adjustable LED lamp bracket
- 36", 18/2 SPT fixture leads with spade terminals
- 3 year warranty LED
- Lifetime housing warranty
- Dimensions 5-1/2" dia. x 10" tall



Louvered Front



Flat Front



Half Moon

premium grade

MR16LED

3w, 5w or 7w, 2700K
38°, 60° or 100° beam angle options



- 3w/220lm/, 5w/550lm, 7w/750lm
- 30°, 60° or 100° beam angle options



LW340 Features

- 12 volt AC/DC
- MR16 3w, 5w or 7w LED
- Glass lens (LW340) choice of flat "FF", louvered "L" top or "HM" half moon
- GX5.3 bi-pin porcelain lamp socket
- Adjustable LED lamp bracket
- Rubber gaskets/seals, (LW340)
- 36", 18/2 SPT fixture leads
- PVC housing
- Stainless-steel fasteners
- GX5.3 bi-pin porcelain lamp socket
- Lifetime housing warranty
- Dimensions 4-3/4" dia. x 7" tall

Hardscape | WELLFlood

Made in USA



In-ground Lighting | Up Lighting | Architectural Lighting

The HardScape Well series fixtures allow for a variety of lighting techniques; wall washing, architecture, uplighting trees, flags, driveways and sculptures. Available in either flat, domed or louvered front options. Features a removable fixture with hardscape mounting kit. Features interchangeable LEDs for maximum nighttime effects and design flexibility.

Features

- 12 volt AC/DC
- Interchangeable water-proof MR16 3w LED
- Raw brass housing
- Stainless-steel fasteners
- Hardscape mounting kit
- 25', 16/2 SJ-W fixture leads
- Glass lens
- Flat, Domed or Louvered front options
- Silicone gaskets
- GX5.3 bi-pin porcelain lamp socket
- Rubber expansion ring collar
- 3 year warranty **LED**
- Lifetime housing warranty
- Dimensions 4-1/2" O.D. dia. x 9" tall



MR16LED
 3w, 220lm, 2700K
 5w/550lm, 7w/750lm
 38°, 60° or 100°
 beam angle options



HS240/F with flat front



In Concrete



HS240/D with domed front



In Pavers



HS240/L with louvered front



COLOR OPTIONS



ARB/ArchBronze



BKTX/BlackTex



BS/BlueStone



BZT/BronzeTex



GG/GravelGray



RR/RedRock



SS/SandStone

Paver Lighting | Walkway and Driveway Marking | Highlighting Steps | Wall Lighting

The micro **BulletSquare** series is excellent for accent lighting in pavers and walls. For paver lighting simply notch a square out of the desired paver corner. For wall mounting, drill a 1" mounting hole. Features a solid 1" dia. machined 6063 aluminum housing with a screw off front lens for LED access. The water-proof design and durable components provide for maximum fixture life.

PAVERMount FlatFront

model **BL-PM/SQFF** for paver mount uplighting

BL-SQFF Square FlatFront

Features

- 12 volt AC/DC
- G4 1w, 2700k, Ceramic LED
- Frosted glass lens with flat front
- 1-1/4" PVC mounting sleeve
- Machined aluminum housing & front
- O-Ring front gasket
- 36", 18/2 SPT fixture leads
- 3 year warranty LED
- Lifetime housing warranty
- Patented
- Dimensions: Housing 1" dia x 3" long,

Face Cover 1-1/2" dia square. x .25" deep



G4 1w, 2700k
Ceramic LED

WallMount HalfMoon front

model **BL-WM/SQHM** for recessed mount wall washing

BL-SQHM Square HalfMoon

Features

- 12 volt AC/DC
- G4 1w, 2700k, Ceramic LED
- Frosted glass lens with Halfmoon front
- 36", 18/2 SPT fixture leads
- Machined aluminum housing & front
- O-Ring front gasket
- Lifetime housing warranty
- 3 year warranty LED
- Patented
- Dimensions: Housing 1" dia x 3" long,

Face Cover 1-1/2" dia square. x .25" deep



PaverMount FlatFront



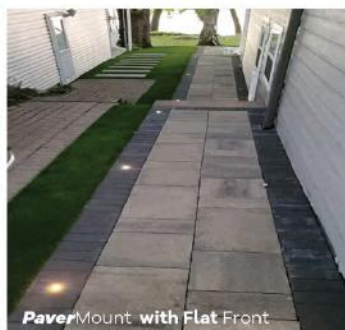
Includes 1-1/2" O.D.
PVC mounting sleeve
for in mounting pavers



Half Moon option front cover for more in-direct lighting effects



WallMount HalfMoon Front



PaverMount with Flat Front



WallMount with HalfMoon Front



PaverMount with HalfMoon Front

COLOR OPTIONS



ARB/ArchBronze



BKTX/BlackTex



BS/BlueStone



BZT/BronzeTex



GG/GravelGray



RR/RedRock



SS/SandStone

Up Lighting | Walkway and Driveway Marking | Highlighting Steps

The micro **BulletRound** series is excellent for uplighting and side lighting in concrete and wood surfaces. Features a small 1" dia. machined aluminum housing with a screw off front lens for LED access. The water-proof design and durable components provide for maximum fixture life.



BL-R/FF & BL-R/HM

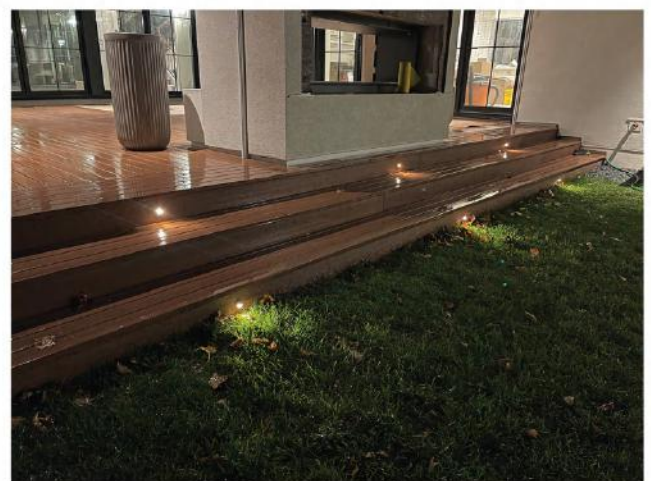
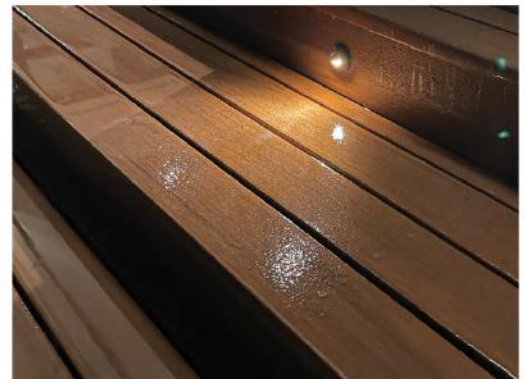
Features

- 12 volt AC/DC
- 1w, G4, 2700K, Ceramic LED
- Frosted glass lens with flat front
- Machined 6063 aluminum housing & front
- O-Ring front gasket
- 36", 18/2 SPT fixture leads
- 3 year warranty LED
- Lifetime housing warranty
- Patented

- Dimensions:
Housing 1" dia x 3" long,
Face Cover 1-1/2" dia square. x .25" deep



1w, G4, 2700K, Ceramic LED



COLOR OPTIONS



ARBZ/ArchBronze



BKTX/BlackTex



BS/BlueStone



BZT/BronzeTex



GG/GravelGray



RR/RedRock



SS/SandStone

Hardscape Wall Lighting | Step Lighting | Address Lighting | Deck & Fence Lighting

The **LEDGE** series is great for accenting hardscape columns, walls and address numbers. The versatile mounting chassis and mortar plate allow for mounting on steps, under existing top caps and walls. Features interchangeable 2w Ceramic LEDs for maximum nighttime effects and design flexibility. Choose from copper, black patina or 8 different powder coat color options to blend best with your project.

Features

- 12 volt AC/DC
- 3 size width options 5", 10" or 15"
- Choice of 1w or 2 watt Ceramic **LED**
- Stainless-steel housing and mortar plate
- G4 bi-pin porcelain socket
- Raw copper or stainless-steel with 8 powder coat color options
- 60" 18/2 SPT fixture lead
- Frosted glass lens
- Casts 5-8ft. dia. of light
- Lifetime housing warranty
- Made in USA



G4LED
1 or 2 watt Ceramic **LED**
2700K warm white,
110 or 180 Lumen



DL1511-MP series
15" W x 1" T x 1" D
6w (3x 1w or 2w, G4 **LED**),
Ceramic **LED**, 2700K



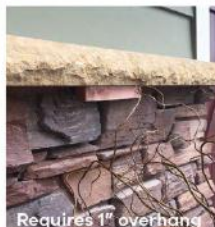
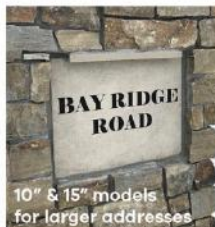
DL1011-MP series
10" W x 1" T x 1" D
4w (2x 1w or 2w, G4 **LED**),
Ceramic **LED**, 2700K



DL511-MP series
5" W x 1" T x 1" D
1w or 2w, G4,
Ceramic **LED**, 2700K

Color Options

	BS/BlueStone
	BZT/BronzeTex
	WH/White
	ARBZ/ArchBronze
	SS/SandStone
	BKTX/BlackTex
	RR/RedRock
	GG/GravelGray
	G/Raw Copper
	BSST/Black Patina Stainless Steel



ACCENT LIGHTING
TOUCHSTONE®



Fence & Sconce series

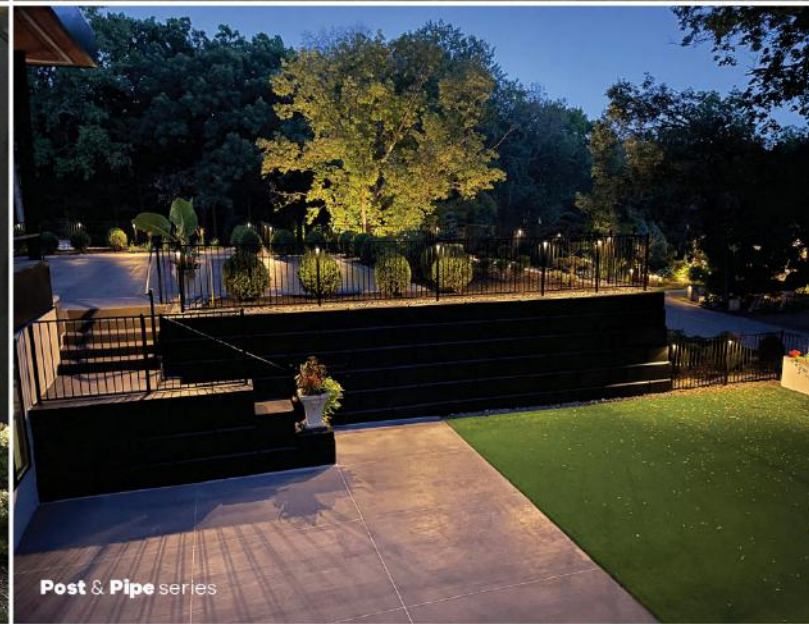
ODL series
OUTDOOR LIVING



UniFlood 7w 60° & LandscapeWellFlood with Half Moon fronts



BistroLighting



Post & Pipe series



Hanging Copper series



Ledge series

Outdoor living spaces have never been more popular. Extend your enjoyment with family and friends during nighttime gatherings with TouchStone Lighting's Outdoor Living series fixtures. These fixtures are the perfect addition to pool areas, outdoor kitchens, fireplaces, grilling stations, deck, docks and patios, enhancing safety, security and beauty for your home at nighttime.

Deck & Stairway Lighting | Fence Lighting | Hardscape Walls

The **Dakota** series is great for deck railing posts, stairways, walls and address numbers. The Dakota surface mount fixtures can add great in-direct perimeter lighting or accent your outdoor living area in a soft inviting setting. Includes interchangeable 1w Ceramic LEDs for maximum nighttime effects and design flexibility.

Features

- 12 volt AC/DC
- Interchangeable 1 watt ceramic **LED**
- Solid copper or aluminum with powder coat finish
- Surface mounts to any type of surface
- Recommended spacing on decks and stairways (5-7ft.)
- Recommended spacing on fences (8-12ft.)
- Casts up to an 8ft. dia. of light
- 60", 18/2 SPT fixture lead
- G4 bi-pin porcelain lamp socket
- Lifetime housing warranty

- Dimensions 3-3/4" W x 2-1/2" T x 2-1/4" D



C/Copper



N/Nickel



BKTX/BlackTex



WH/White



ARBZ/ArchBronze

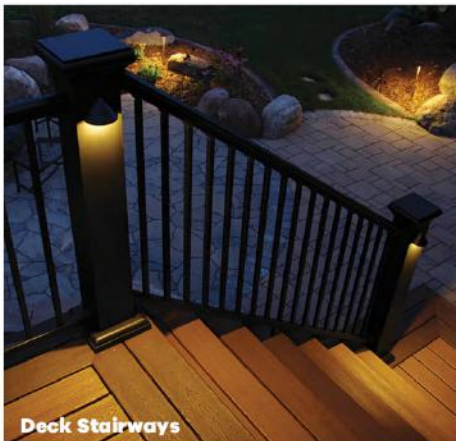


G4LED

Includes 1 watt Ceramic LED
2700K warm white, 110 lumen



Bottom View



Deck Stairways



Mid Wall & Steps

Surface Mounts



Privacy Fences



Above Garage Doors



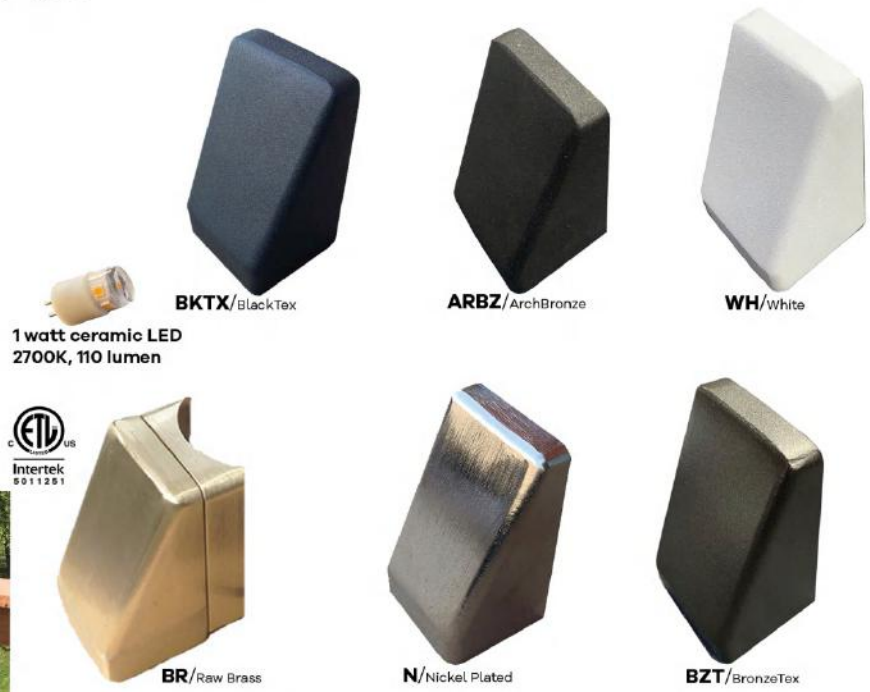
Split Rail Fences

Deck & Stairway Lighting | Fence & Gate Lighting | Spiral Stairway Lighting

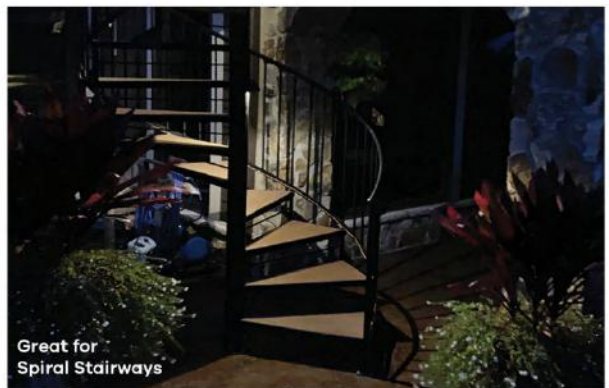
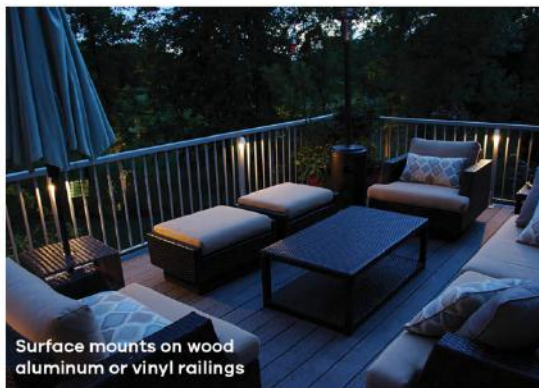
The **POST & PIPE** series is great for creating in-direct lighting effects on deck railings, stairways, addresses and spiral stairways. The small housing allows for surface mounting on 2" or wider wood, vinyl, concrete or metal surfaces. The optional radius bracket allows for mounting on tubular railings and posts. Features interchangeable 1w ceramic LED for maximum nighttime effects and durability. Choose from brass patina, nickel plate or 4 powder coat color options to blend best with your deck or project.

Features

- 12 volt AC/DC
 - Raw brass with patina, nickel plated or powder coat finish
 - Interchangeable 1 watt **Ceramic LED**
 - Solid brass housing
 - Surface mounts
 - Optional 2" pipe bracket
 - 60", 18/2 SPT fixture lead
 - Casts up to an 8ft. dia. of light
 - G4 bi-pin porcelain lamp socket
 - Lifetime housing warranty
 - Finished and assembled in USA
- Dimensions 2" W x 1-3/4" T x 1-1/4" D



Raw brass-BR with optional 2" radius bracket shown



LEDGE BAR LB511/LB1011/LB1511 series

Made in USA

Hardscape Wall Lighting | Step Lighting | Address Lighting | Deck & Fence Lighting

The LEDGEBAR series is great for lighting addresses, architectural, steps and walls. The versatile mounting chassis allows for surface mounting. Features interchangeable 2w Ceramic LEDs for maximum nighttime effects and design flexibility. Choose from 8 different powder coat color options.

Features

- 12 volt AC/DC
- 3 size width options 5", 10" or 15"
- Choice of 1w or 2 watt Ceramic LED
- Stainless-steel chassis and front cover
- G4 bi-pin porcelain socket
- 8 powder coat color options
- 60" 18/2 SPT fixture lead
- Frosted glass lens
- Casts 5-12ft. dia. of light
- Lifetime housing warranty
- Made in USA



LB1511 series
15" W x 1" T x 1" D
6w (3x 1w or 2w, G4 LED),
Ceramic LED, 2700K



LB1011 series
10" W x 1" T x 1" D
4w (2x 1w or 2w, G4 LED),
Ceramic LED, 2700K



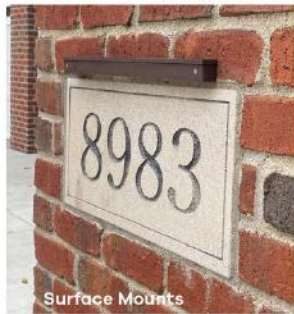
LB511 series
5" W x 1" T x 1" D
1w or 2w, G4,
Ceramic LED, 2700K



G4LED
1 or 2 watt Ceramic LED
2700K warm white,
110 or 180 lumen

Color Options

	BS/BlueStone
	BZT/BronzeTex
	WH/White
	ARBZ/ArchBronze
	SS/SandStone
	BKTX/BlackTex
	RR/RedRock
	GG/GravelGray



HANGING COPPER HC125 series

Down Lighting from Trees | Pergola & Arbor Lighting | Outdoor Living Areas

Features

- 12 volt AC/DC
 - Interchangeable MR8 LED, 2.5 watt
 - Solid copper with brass top housing
 - Stainless-steel set screw
 - Adjustable copper visor
 - 25 ft., 18/2 SPT fixture lead
 - Brass mounting hook and 8" UV strap (standard)
 - G4 bi-pin porcelain lamp socket
 - Lifetime housing warranty
- Dimensions 1-1/4" Dia. X 5" T



MR8LED
MR8, 2.5 watt, 120° beam,
warm white/2700K
110 lumen,

Mounting Options

- 24" chain with 2 hooks
- 12" stainless-steel cable with 2 hooks

Columns | Fences | Pergolas | Gazebos & Outdoor Living Areas

The **FENCE | SCONCE** series is great for accenting under deck columns, fences, walls and pergolas. The narrow mounting plate allows for surface mounting on 2" or wider posts. Features dual lamp sockets for your choice of up/down or both. Uses interchangeable 3w G4, 2700K ceramic LEDs. Includes 2 clear lens and 1 color match cover. Choose from 3 different powder coat color options to blend best with your deck or project.

Features

- 12 volt AC/DC
- Interchangeable 3w, G4 LEDs
- Aluminum with powder coat finish
- Stainless-steel fasteners
- Surface mounts
- 60" fixture leads
- Top and bottom lens
- Includes color matched top cover
- Choose from either 1 or 2 LEDs for up/down illumination
- Dual GX5.3 porcelain lamp sockets
- Cast 4-6ft. diameter of light
- 10 year housing warranty
- Dimensions 3"W x 2"D x 5"T

FS235 **FENCE | SCONCE**



FS235/BKTX
BlackTex



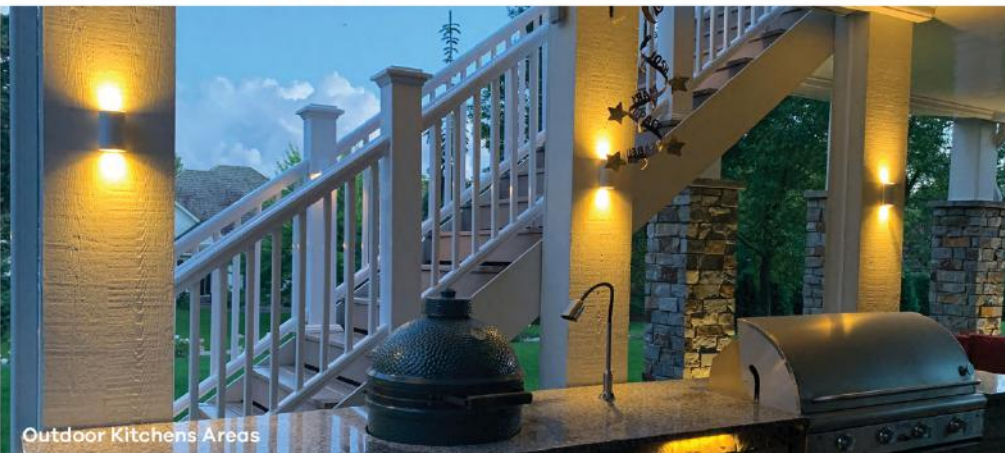
FS235/WHTX
WhiteTex



FS235/ARBZ
ArchBronze



G4LED
G4, 3 watt, ceramic LED, warm white/2700K 280 lumen,



Pergola Lighting | Overhead Lighting | Counter Top Lighting

Outdoor rated, modern styling, casts up to a 12-ft. diameter of light. Set screw fittings, heavy duty construction requires no assembly. Features an off-set design for greater downward illumination, screw off lens for easy LED lamp access. Available in wall mount & hanging mount models.

Features

- 12 volt AC/DC
- Machined aluminum fittings
- Stainless steel hood
- 2w ceramic LED, 2700K
- 18", 18/2 W-SPT fixture lead
- Clear screw on lens
- Mounts on 3" round junction boxes
- BlackTex, WhiteTex, BronzeTex powder coat finishes
- Lifetime warranty
- Dimensions: hood 6" dia x riser 1/2" dia. x 5" tall x 7" long



G4LED
1 or 2 watt Ceramic LED
2700K warm white,
110 or 180 lumen



Color Options

Donovan WallMount
DW126-WHTX/ WhiteTex

Donovan WallMount
DW126-BKTX/BlackTex

Donovan WallMount
DW126-BZTX/BronzeTex

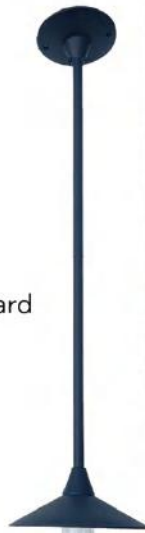
Great For

- Pergolas
- Pool Houses
- Cabana's
- Fences
- Doorways
- Exterior Walls

Donovan series **HangingMount**

Features

- 12 volt AC/DC
- Machined aluminum fittings
- Stainless steel hood
- 2w ceramic LED, 2700K
- 18", 18/2 W-SPT fixture lead
- Clear screw on lens
- Mounts on 3" round junction boxes
- BlackTex, WhiteTex, BronzeTex powder coat finishes
- Lifetime warranty
- Dimensions: hood 6" dia x riser 1/2" dia. x 16" long standard
- Optional Riser lengths 6", 12", 24" or 36"
- Optional RubberMount for fixture flex. Part UMRM



Donovan HangingMount with 36"riser



rubbermount
Knock it. Lean on it. Run into it.
Enables fixture flexibility and reduced maintenance. Made from tough durable rubber, RubberMounts are suitable with any fixture with a 1/2 NPT fitting.



Donovan HangingMount
DH126/16-WHTX/WhiteTex



Donovan HangingMount
DH126/16-BZTX/BronzeTex



Donovan HangingMount
DH126/16-BKTX/BlackTex

Light My Grill

GR100F series



Grill Lighting | Outdoor Kitchens

The "Light My Grill" is for great outdoor grilling areas and countertops. Available in kit form with transformer or without. Features a ON/OFF switch and flex neck.

Features

- 12 volt AC/DC
- Interchangeable 7w, 4000K, 780 lm, MR16 LED
- Nickel plated finish
- Push button ON/OFF switch
- Adjustable "goose neck" with UV shrink wrap
- 60", 18/2 SPT fixture lead
- Adjustable visor
- Surface mounts with 3 hole, 3" surface mount
- G4 bi-pin porcelain lamp socket
- Does NOT include mounting screws/hardware
- 5 year housing warranty
- Dimensions 5/8" x 28" T x 3" dia.

GR100F
nickel plated

Tool-less
Top Removal



MR16LED
MR16, 7 watt, 100°,
white/4000K,
780 lumen



TubeSconce

TS350/TS380 series

Accent Lighting | Outdoor Living Areas

Features

- 12 volt AC/DC
- Interchangeable 3w, 2700K, 220 lm, MR16 LED
- Machined brass with BlackTex finish
- Stainless-steel fasteners
- 18/2 SPT fixture lead
- Choose either dual or single LED
- Surface mounts round J-box
- Bi-pin porcelain lamp socket
- Sealed glass lens
- 5 year housing warranty
- Dimensions **TS350** 3" dia. x 8" tall.
- Dimensions **TS380** 3" dia. x 12" tall.

MR16LED
MR16, 3 watt, 60°,
warm white/2700K,
220 lumen



TS350
single direction

TS380
dual direction





12v LED BistroLight series

Commercial | Outdoor Living Areas | Residential

The 12v **BISTRO**Light series operates from a 12v transformer, so it's safer to install and more cost effective to operate than 120v lighting. Great for accenting outdoor living areas and restaurants. Optional dimmer, stainless-steel cable supports and mounting post accessories available.



Optional mounting post and cable hardware.

Features

BistroLight string light

- 12 volt AC/DC
- Heavy-duty, commercial grade, non suspended
- Soft UV resistant PVC, water-tight
- E26 medium base
- 2w per LED bulb
- 24" bulb spacing
- 330ft. per roll, can be custom cut to order
- 3 year warranty



e26-base medium base

12 volt e26 LED Bulbs



premium grade

E26LED bulbs

- 12 volt AC/DC
- S14 Globe
- E26 base
- 2 watt
- .62 power factor
- COB type LED
- CRI>80
- 110lm/2700K
- 360° light radius
- 2 year warranty



Shown with wood support blocks



Provides a warm white tone

BISTROLight ACCESSORY PARTS



BL2/10-SQMP SQUARE POLE

Standard powder coat colors

- Square aluminum pole
- Mounting sleeve
- 2" dia x 10ft.
- Stainless-steel eyebolt

BL SS-CHK POLE

100ft. Stainless-Steel Cable and tension clamp kit



part TRMD Dimmer

- 12v AC
- 120w max.
- Works with all LEDs

part MDBX Dimmer Outdoor Mounting Box

- Rain-tight cover
- Easy access door



Under Edge Lighting | Step Lighting | Wall Lighting | Architectural Lighting

TapeLight is for highlighting continuous lengths. Great for accenting steps, walls and architectural features. Operates from a standard 12v transformer.

Features

- 12 volt AC/DC
- 2700K LED
- Connect up to 3 reels
- Adhesive tape backing
- 1.45W per ft./25w reel
- 6" fixture pigtail leads on each end
- Silicone encapsulated/waterproof
- Cutable every 4".
- 1 year housing warranty
- Dimensions 1/2" wide x 16.5ft. reel



MOON D225 | D226

series

Dock Lighting | Step Lighting | Fence Lighting

Features

- 12 volt AC/DC
- Interchangeable 2 watt Ceramic LED
- Cast aluminum housing
- Powder coat ARBZ, BKTX, BZT, WH finishes
- Surface mounts
- Sealed housing with glass lens
- 60" 18/2 SPT fixture lead
- Casts up to a 5 ft. dia. of light
- Silicone housing gaskets
- G4 bi-pin porcelain lamp socket
- Stainless-steel screws
- 10 year housing warranty
- Dimensions 4" Dia x 2" Deep



D225 Half Moon



D226 Louvered



G4LED

2 watt Ceramic LED
2700K warm white, 180 lumen



ARBZ/ArchBronze



BKTX/BlackTex

BZT/BronzeTex

Available in ArchBronze/ARBZ, BlackTex/BKTX, BZT/BronzeTex, White/WH

Indoor/Outdoor Lineal Lighting

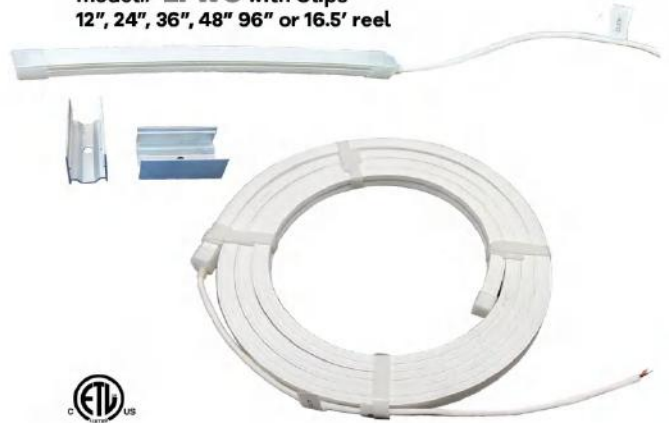
Great for a variety of residential and commercial applications. Available in 12 volt AC/DC, requires a 12v transformer. Creates a smooth flow of neon like illumination. Chose your mounting option for endless applications.

LumaFlex 12v AC/DC

Features

- 12 volt AC/DC
- Warm white, 2700K
- 10 watts/39"
- Requires 12v transformer
- Dimmable
- IP68 water-proof
- Flexible, surface mounts in any orientation
- Sealed silicone end caps
- 12" fixture lead on 1 end
- Casts smooth lineal line of illumination
- Aluminum mounting clips
- Can be cut every 1"
- 3 year warranty
- Dimensions 1/2"W x 1/2"T

model# **LFWC** with Clips
12", 24", 36", 48" 96" or 16.5' reel



Smooth warm white illumination with no heat



LumaFlex with Clips

model#	length	watts
LFSC-12VAC-27K-12	12"	3W
LFSC-12VAC-27K-12	24"	6W
LFSC-12VAC-27K-12	36"	9W
LFSC-12VAC-27K-12	48"	12W
LFSC-12VAC-27K-12	96"	24W
LFSC-12VAC-27K-12	198"	50W
LFSC-12VAC-27K-12	236"	60W
LFSC-12VAC-27K-12	1181"	300W

LumaFlex with Channel and End Caps

Model#	Length	Watts
LFECCK-12VAC-27K-12-BKTX	12"	3W
LFECCK-12VAC-27K-12-BKTX	24"	6W
LFECCK-12VAC-27K-12-BKTX	36"	9W
LFECCK-12VAC-27K-12-BKTX	48"	12W
LFECCK-12VAC-27K-12-BKTX	96"	24W

Accent cabinets, furniture and kitchen toe-kick areas



BrassSubmersible

Water Feature Lighting | Fountain Lighting | Waterfall Lighting

The **BrassSubmersible** fixture allows for a variety of uplighting and submersible lighting effects. Available in either visor or flat front models. Features a solid brass housing, front rings and removable fixture stand. Great for water features, fountains, waterfalls, and small ponds. Our **BrassSubmersible** series features interchangeable MR16 LEDs for maximum nighttime effects and design flexibility.

Features

- 12 volt AC/DC
 - Interchangeable MR16 3w LED std., 5w or 7w optional
 - Raw brass
 - Stainless-steel fasteners
 - 25' fixture leads
 - Glass lens
 - Visor or flat front
 - Silicone gaskets
 - GX5.3 bi-pin porcelain lamp socket
 - Removable brass stand
- Dimensions 3-3/4" dia. x 5-3/4" tall



W240/V
with Visor front



MR16 LED
MR16, 3 watt, 38°, warm white/2700K, 220 lumen



W240/F
with Flat front



WATERRACK | WR448
2700k, 5000K or ColorChange LED



BrassSubmersible/5w 60°



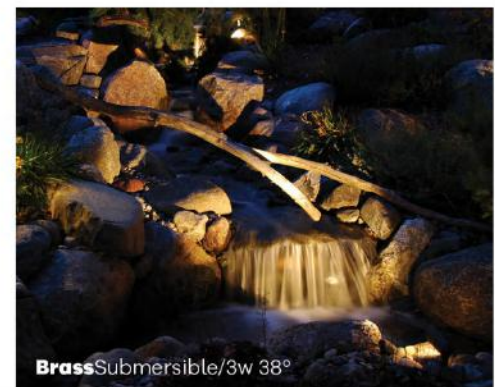
FLOATING WATERRACK



Can operate in or out of water



Submerge up to 36"



BrassSubmersible/3w 38°

SNAIL series SUL6/15/30



Streams | Under Rocks | Shallow Areas | Bubbling Rocks | Night Putting

The **Snail** is for great accenting shallow water areas, bubbling rocks and golf cups. Available in warm white, red, green or blue LED. Suitable for water locations to 12" deep. Available in 3 lengths, 6', 15', and 30'.

Features

- 12 volt AC/DC
- 2w Ceramic LED, 2700K, or Red, Green, Blue LED
- 18/2 W-SPT fixture lead
- Tempered Glass Lens
- Suitable in or out of water
- IP68, mastic/heat shrink
- 2 year warranty
- Made in USA

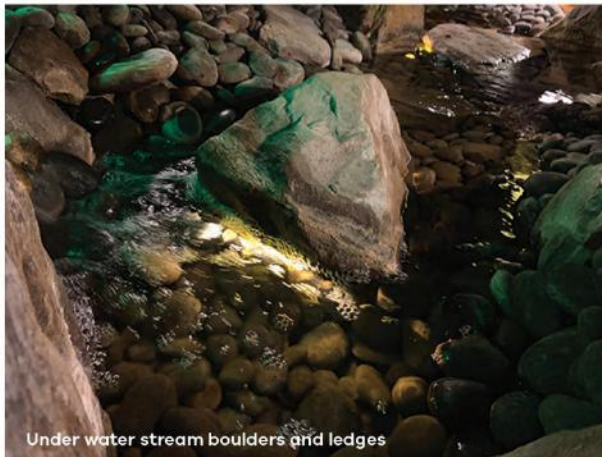
- SUL/6** ● Dimensions 3/4" dia. x 2" L x 6ft. long
- SUL/15** ● Dimensions 3/4" dia. x 2" L x 15ft. long
- SUL/30** ● Dimensions 3/4" dia. x 2" L x 30ft. long

SUL/15

SNAIL-warm white, or colored LED
Available in 6ft, 15ft, 30ft.



G4LED
1 or 2 watt Ceramic LED
2700K warm white,
110 or 180 lumen



Under water stream boulders and ledges



Available warm white, blue, green or red LED



Great for nighttime putting



Putting Green Cups

Perimeter Lighting | Kennel Lighting

The **ChainLink** Perimeter series is great for adding in-direct perimeter lighting on chain link fencing and kennels. Space fixtures every 12-15ft. Radius bracket allows for secure mounting on any 2" tubing.

Features

- 12 volt AC/DC
 - 1 watt ceramic LED, 2700K
 - Raw aluminum housing
 - 2" nickel plated pipe bracket
 - 60", 18/2 SPT fixture lead
 - Casts up to an 10ft. dia. of light
 - Accepts 1/2 NPT hardware
 - G4 bi-pin porcelain lamp socket
 - Stainless-steel screws
 - Lifetime housing warranty
 - Made in USA
- Dimensions: 2" wide x 2" deep x 3" tall



2" pipe bracket allows for easy, durable fixture mounting



Fixture Sockets

PART P384-LS

For G384, G486 series fixtures
● 36" lead with S/S bracket



PART P224-LS

For A224, A195 series fixtures
● 36" lead with S/S bracket



PART P212-LS

For A212 & all GC series fixtures
● 36" lead with screws



PART PDL-LS

For DL series fixtures
● 60" lead with S/S bracket



PART PPP-LS

For PP173 series fixtures
● 60" lead with S/S bracket



genuine **PARTS**
REPLACEMENT

Fixture Ground Stakes

PART PS8-F SuperStake

- Plastic stake-standard with most fixtures
- 1/2" NPT thread
- 2" dia x 8"
- Made in USA



For maximum fixture support, the SuperDuty SS2A SuperStakes accept any fixture with 1/2" NPT mounting.

Metal SuperStakes

PART SS2A12

PART SS2A18

- Machined Aluminum Top Cap
- Earthtone powder coated
- 1/2" NPT thread
- 2" dia. aluminum pipe
- PVC bottom spear
- Stainless-steel set screws
- 2 size length options 12" or 18"
- Made in USA



Transformers

Our Universal series transformers allow for customization of timer control devices. Choose from 75w to 900w models. Each unit includes mounting hardware and 3/4" conduit. All models plug into any 120v GFI protected outlet.

Universal series

Features

- Outdoor/Indoor rated, suitable for wet location
- 12-15 VAC tap setting options (standard)
- 15-22v VAC long distance 600w model
- Steel housing with black powder coat
- Stainless-steel fasteners
- Stainless-steel locking buckle
- Side hinged access door
- Epoxy encapsulated toroidal core
- Allows for optional timer and photo-cell
- 12v magnetic circuit breakers
- 6ft. grounded plug cord
- Bottom plate with terminal knock-outs
- 18" of 3/4" conduit and terminal adapter
- Assembled in USA



models **TR75U, TR150U, TR300U, TR600U & TR900U series**
stainless steel or black powder coat housing options

Transformer Specifications

MODEL	WATTAGE	AMPS CIRCUITS /BREAKERS/COMMONS		DIMENSIONS
Universal <small>series</small>				
TR75U	75	.625	1	6"W x 11-1/2"T x 5-1/2"D
TR150U	150	1.25	1	6"W x 17-1/2"T x 5-1-2"D
TR300U	300	2.50	1	6-1/2"W x 16-1/2"T x 6"D
TR300-SS	300	2.50	1	6-1/2"W x 16-1/2"T x 6"D
TR600U	600	5.00	2	8"W x 18"T x 7-1/4"D
TR600/15-22v	600	5.00	2	8"W x 18"T x 7-1/4"D
TR900U	900	7.50	3	8"W x 20"T x 7-1/4"D
DualZone Wifi <small>series</small>				
TR300-SS-WIFI	300	2.50	1	5-3/4"W x 11-1/2"T x 5-1/4"D
PowerPack <small>series</small>				
TR200-PT-P	200	1.50	1	5"W x 8"T x 5-1/2"D

DualZone Wifi series

Control 2 separate zones with app, 12v, 13, 15v tap settings

model
TR300SS-wifi



PowerPack series

with built in photo-cell and 4, 6, 8 hr, D/D timer

model
TR200PT-P



Transformer ACCESSORIES



Universal Transformer Mounting Stand

- Adjusts to any size Universal transformer
- No more holes in houses
- No more rotten posts
- Includes all hardware



part **TRSPC**
Short Photo-cell



part **TRMD** Dimmer
● 12v AC/DC
● 100w max.
● Dims all 12v LEDs



part **TRAT** Astronomical timer
● Allows for auto dusk/timer settings
● Battery backup



part **TRST** SMART Timer
● BlueTooth
● APPLE/ANDROID APP



part **TRMT** Mechanical timer
● easy to operate

Cables, Connectors & Accessories

Landscape Lighting Cable

- Sequentially numbered by the foot
- UV black outer jacket
- Standed copper
- UL listed
- 500ft. spools or by the foot
- Made in USA



Cable Connectors



Knock it. Lean on it. Run into it.
Enables fixture flexibility and reduced maintenance. Made from tough durable rubber, RubberMounts are suitable with any fixture with a 1/2 NPT fitting.



Maintain the performance and nighttime beauty with genuine TouchStone LEDS.

MR8LED

Wattage/Lumens
●2.5w/160lm



Part#
MR8-2.5w/38°/2700k
MR8-2.5w/60°/2700k
MR8-2.5w/100°/2700k

MR8LED for
A185, HC125 & FS235 series

- 12 volt AC/DC
- 38°, 60° or 120° lens
- 25mm x 37mm
- CRI>85
- G4 bi-pin base
- 9-17 voltage
- .53 power factor
- 160lm/2700K
- 5 year warranty

MR11LED

Wattage/Lumens
●2.5w/180lm



Part#
MR11-2.5w/38°/2700k
MR11-2.5w/60°/2700k
MR11-2.5w/100°/2700k

MR11LED for
A195, A195BR, FS235 series

- 2.5 watt, 12 volt AC/DC
- 30°, 60°, 120° lens
- 34mm x 46mm
- CRI>85
- G4 bi-pin base
- 9-17 voltage
- .53 power factor
- 180lm/2700K
- 5 year warranty

MR16LED

3w/5w/7w

Wattage/Lumens
●3w/220lm/
●5w/550lm
●7w/750lm



Part#
MR16-3w/38°/2700k
MR16-3w/60°/2700k
MR16-3w/100°/2700k

MR16-5w/38°/2700k
MR16-5w/60°/2700k
MR16-5w/100°/2700k

MR16-7w/38°/2700k
MR16-7w/60°/2700k
MR16-7w/100°/2700k

MR16LED for
A212, A214, A224, A233, LW240,
HS240, LW340, GR100 series

- 3, 5 or 7 watt, 12 volt AC/DC
- 30°, 60°, 100° lens
- Dimmable
- CRI>85
- Rated for outdoor enclosed fixtures
- 50mm x 51mm
- 9-17 voltage
- 2700K
- 5 year warranty

PAR36LED for

A216, A236 & LW510

Wattage/Lumens
●10w/800lm
●13w/1130lm
●17w/1300lm



Part#
PAR36-10w/38°/2700k
PAR36-10w/60°/2700k
PAR36-10w/100°/2700k

PAR36-13w/38°/2700k
PAR36-13w/60°/2700k
PAR36-13w/100°/2700k

PAR36-17w/15°/4000k
PAR36-17w/38°/2700k
PAR36-17w/60°/2700k
PAR36-17w/100°/2700k

PAR36LED for
A216, A236 & LW510

- 9-17 volt AC/DC
- Dimmable
- 10 watt, 13 watt, 17 watt
- 2700K, warm white or 4000K white
- CRI>85
- IP67 rated
- 38°, 60° or 100° beam angle
- 5 year warranty

Lumens
●10w/800lm/, 13w/1130lm, 17w/1300lm

miniatureLEDs



Premium Grade LEDs Water-proof, 12volt AC/DC Outdoor Rated LEDs
Our LEDs feature ceramic bases providing maximum heat dissipation with encapsulated LEDs suitable for outdoor use.



1 watt Ceramic LED

- 12 volt AC/DC
- 110 lumens
- G4 bi-pin base
- 1 watt
- .62 power factor
- SMD type LED
- CRI>85
- 2700K
- 360° light radius
- 10mm x 36mm
- 3 year warranty

For models

G384, G586 series
GC578, GC710, GC910, GC9510 series
GL246, D225, D226, DL511 series



2 watt Ceramic LED

- 12 volt AC/DC
- 180 lumens
- G4 bi-pin base
- 2 watt
- .62 power factor
- SMD type LED
- CRI>85
- 2700K
- 360° light radius
- 10mm x 36mm
- 3 year warranty

For models

G384, G586 series
GC578, GC710, GC910, GC9510 series
GL246, D225, D226, DL511 series



3 watt Ceramic LED

- 12 volt AC/DC
- 280 lumens
- G4 bi-pin base
- 3 watt
- .62 power factor
- SMD type LED
- CRI>85
- 2700K
- 360° light radius
- 10mm x 43mm
- 3 year warranty

For models

G486/G586, GL246
GC578, GC710, GC910, GC9510
11125 and 10936 series



4 watt Ceramic LED

- 12 volt AC/DC
- 320 lumens
- G4 bi-pin base
- 4 watt
- .62 power factor
- SMD type LED
- CRI>85
- 2700K
- 360° light radius
- 10mm x 44mm
- 3 year warranty

For models

G486/G586, G1259,
GC578, 778, 978, 9578
11125 and 10936 series

ColoredLEDs



2 watt Ceramic COLORED LED

available in RED, GREEN or BLUE

- PART **G4/2w/RED**
- PART **G4/2w/GREEN**
- PART **G4/2w/BLUE**

- 12 volt AC/DC
- G4 bi-pin base
- 2 watt
- .62 power factor
- SMD type LED
- CRI>80
- 180lm/2700K
- 360° light radius
- 10mm x 36mm
- 3 year warranty

Fits all Touchstone fixtures



PART **MR11-2.5w/38°** / RED, GREEN, BLUE

PART **MR16-5w/30°** / RED, GREEN, BLUE

PART **MR16-5w/60°** / RED, GREEN, BLUE

PART **MR16-7w/100°** / RED, GREEN, BLUE

- 12 volt AC/DC
- G4 bi-pin base
- 9-17 volt AC/DC
- 3 year warranty

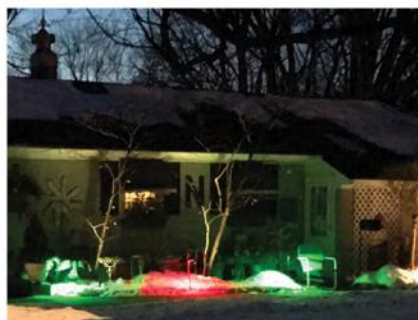


Bluetooth Repeater
increases range, works up 260ft radius.
●12 volt AC/DC

PAR36LED RGBW Color Change



PART **PAR36/RGBW**
apple/android app control
10w/38° or 60°



ACCENT LIGHTING
TOUCHSTONE®



More Outdoor Enjoyment.

TouchStoneLights.com

2425 W. Industrial Blvd., Long Lake, MN, USA 55356

©2026 TouchStone Accent Lighting, Inc. Patents Pending. All Rights Reserved. Subject to Change Without Notice.