

Smart Hybrid Light Cameras

Clever lighting to suit varied needs


Smart Hybrid Light Cameras

Clever lighting to suit varied needs



www.hikvision.com
support@hikvision.com



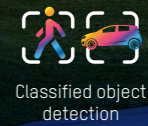
 **Hik-Partner Pro**
Scan and download
the app

01 Low-light Imaging Challenges

Supplemental lighting enables security cameras to “see” clearly in dim environments. Conventional cameras with infrared (IR) light provide black & white images which usually result in loss of details. While white-light cameras offer colorful images, when the light is always on, it is easy to notice and might be disturbing in some specific scenarios.

02 Meet Smart Hybrid Light Cameras

To solve these pain points, Hikvision has created a new approach to supplemental lighting technology – the Smart Hybrid Light. Security cameras with Smart Hybrid Light allow users to adjust the supplemental lighting based on specific needs and environments.



03 How Smart Hybrid Light Cameras Work

Hikvision’s Smart Hybrid Light Cameras provide three supplemental lighting modes: IR mode, white light mode, and smart mode, suiting virtually any need or application.

IR Mode

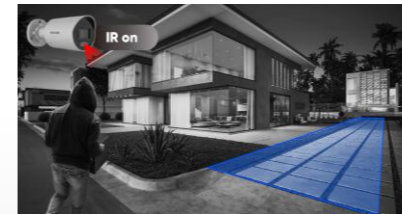
The IR light is always on, and video imaging remains black and white (in low light).

White Light Mode

The visible white light is always on, and the camera captures color imaging 24/7.

Smart Mode

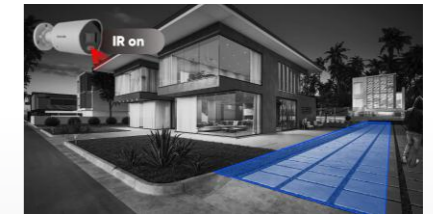
In this mode, the camera uses invisible IR light when there are no people or vehicles around. When a person or vehicle appears, the camera automatically triggers the white light, providing vivid color images with detailed information. This ensures overall security and flexibility for users.



When there is no vehicle or person, the camera uses only the IR light, offering black and white imaging.



When a vehicle or person appears, the white light is automatically triggered, resulting in vivid color imaging with clear details.



When the vehicle or person leaves, the camera switches back to the IR light, rendering black and white imaging.

04 Product Performance

Supplemental light off



Conventional camera



Smart hybrid light camera

Richer colors and better color effect in low light conditions

IR on



Conventional camera



Smart hybrid light camera

Overall image brightness is better than traditional cameras

White light on



Smart hybrid light camera

05 Typical Scenarios



1 Residences



Used as a motion sensor to light the way for family members at night



Deter would-be trespassers to keep residence safe and secure



2 Warehouses / Retail Stores



Classified object detection of people and vehicles using Motion Detection 2.0



Deter potential trespassers when the store or warehouse is closed



3 City Streets



Brilliant and vivid imaging even in dim environments without supplemental lighting



No unwanted or excessive light pollution

06 Easy Configuration

It only takes a few simple steps to set up the Smart Hybrid Light on the cameras.

- **Network cameras** Users can choose from three supplemental lighting modes simply by one click or a few taps.

Day/Night Switch

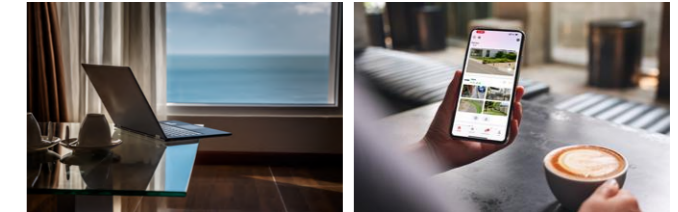
Day/Night Switch

Sensitivity

Filtering Time

Smart Supplement Light

Supplement Light Mode



Web

Mobile app



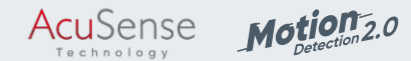
NVR

*The Motion Detection 2.0 or Perimeter Protection function shall be enabled manually.

- **Turbo HD cameras** Users can easily switch among three supplemental lighting modes by using a recommended DVR.

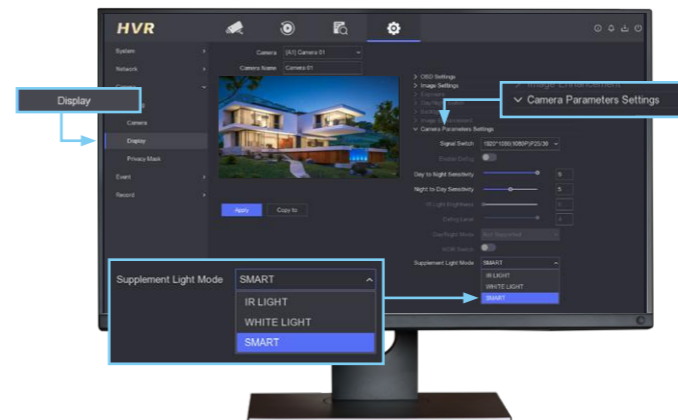


Smart hybrid light cameras



eDVR
DVR with AcuSense
DVR with Motion Detection 2.0

The camera is set to smart mode by default, eliminating manual setup.



Available firmware

Product Series	Firmware Version
eDVR series	V4.71.220
Value series	V4.71.400
Pro series with AcuSense	V4.71.100

Product Showcase

Turbo HD Smart Hybrid Light Cameras



DS-2CE16D0T-LFS
2 MP Mini Bullet Camera

- 0.01 lux @ F1.6
- 2.8/3.6 mm lens
- Smart Hybrid Light
- Up to 20 m white light distance and 30 m IR distance
- Digital WDR
- Audio over Coaxial cable
- IP67
- Metal



DS-2CE16D0T-LPFS
2 MP Mini Bullet Camera

- 0.01 lux @ F1.6
- 2.8/3.6 mm lens
- Smart Hybrid Light
- Up to 20 m white light distance and 25 m IR distance
- Digital WDR
- Audio over Coaxial cable
- IP67
- Plastic



DS-2CE17D0T-LFS
2 MP Bullet Camera

- 0.01 lux @ F1.6
- 2.8/3.6 mm lens
- Smart Hybrid Light
- Up to 40 m white light distance and 40 m IR distance
- Digital WDR
- Audio over Coaxial cable
- IP67
- Plastic & Metal



DS-2CE16K0T-LFS
3K Mini Bullet Camera

- 0.01 lux @ F1.6
- 2.8/3.6 mm lens
- Smart Hybrid Light
- Up to 20 m white light distance and 30 m IR distance
- Digital WDR
- Audio over Coaxial cable
- IP67
- Metal



DS-2CE16K0T-LPFS
3K Mini Bullet Camera

- 0.01 lux @ F1.6
- 2.8/3.6 mm lens
- Smart Hybrid Light
- Up to 20 m white light distance and 25 m IR distance
- Digital WDR
- Audio over Coaxial cable
- IP67
- Plastic



DS-2CE17K0T-LFS
3K Bullet Camera

- 0.01 lux @ F1.6
- 2.8/3.6 mm lens
- Smart Hybrid Light
- Up to 40 m white light distance and 40 m IR distance
- Digital WDR
- Audio over Coaxial cable
- IP67
- Plastic & Metal



DS-2CE76D0T-LMFS
2 MP Turret Camera

- 0.01 lux @ F1.6
- 2.8/3.6 mm lens
- Smart Hybrid Light
- Up to 20 m white light distance and 30 m IR
- Digital WDR
- Audio over Coaxial cable
- IP67
- Metal



DS-2CE76D0T-LPFS
2 MP Turret Camera

- 0.01 lux @ F1.6
- 2.8/3.6 mm lens
- Smart Hybrid Light
- Up to 20 m white light distance and 20 m IR distance
- Digital WDR
- Audio over Coaxial cable
- Plastic



DS-2CE78D0T-LFS
2 MP Turret Camera

- 0.01 lux @ F1.6
- 2.8/3.6 mm lens
- Smart Hybrid Light
- Up to 20 m white light distance and 40 m IR distance
- Digital WDR
- Audio over Coaxial cable
- IP67
- Plastic & Metal



DS-2CE76K0T-LMFS
3K Turret Camera

- 0.01 lux @ F1.6
- 2.8/3.6 mm lens
- Smart Hybrid Light
- Up to 20 m white light distance and 30 m IR
- Digital WDR
- Audio over Coaxial cable
- IP67
- Metal



DS-2CE76K0T-LPFS
3K Turret Camera

- 0.01 lux @ F1.6
- 2.8/3.6 mm lens
- Smart Hybrid Light
- Up to 20 m white light distance and 20 m IR distance
- Digital WDR
- Audio over Coaxial cable
- Plastic



DS-2CE78K0T-LFS
3K Turret Camera

- 0.01 lux @ F1.6
- 2.8/3.6 mm lens
- Smart Hybrid Light
- Up to 20 m white light distance and 40 m IR distance
- Digital WDR
- Audio over Coaxial cable
- IP67
- Plastic & Metal



DS-2CE18D0T-LFS
2 MP Lamp Camera

- 0.01 lux @ F2.0
- 2.8/3.6/6 mm lens
- Smart Hybrid Light
- Up to 60 m white light distance and 60 m IR distance
- Digital WDR
- Audio over Coaxial cable
- IP67
- Plastic & Metal



eDVR Series

Up to **2 weeks** of video recording

DS-E04HGHI-B	DS-E08HGHI-B	DS-E16HGHI-B	iDS-E04HQHI-B	iDS-E08HQHI-B	iDS-E04HUHI-B
Built-in 330 GB eSSD (300 GB available)	Built-in 512 GB eSSD (480 GB available)	Built-in 1 TB eSSD (960 GB available)	Built-in 512 GB eSSD (480 GB available)	Built-in 1 TB eSSD (960 GB available)	Built-in 1 TB eSSD (960 GB available)
4-ch 1080p lite @ 15 fps	8-ch 1080p lite @ 15 fps	16-ch 1080p lite @ 15 fps	4-ch 3K / 5 MP lite @ 12 fps	8-ch 3K / 5 MP lite @ 12 fps	4-ch 3K / 5 MP @ 12 fps
5.4 W (max.)	6.2 W (max.)	9.5 W (max.)	5.4 W (max.)	8.2 W (max.)	7.5 W (max.)
Motion Detection 2.0			AcuSense-enabled classified object detection		
HDTVI / AHD / CVI / CVBS / IP video input					
H.265 & Scene-Adaptive Bitrate Control					

Up to **4 weeks** of video recording

DS-E04HGHI-D	DS-E08HGHI-D	iDS-E04HQHI-D
Built-in 512 GB eSSD (480 GB available)	Built-in 1 TB eSSD (960 GB available)	Built-in 1 TB eSSD (960 GB available)
4-ch 1080p lite @ 15 fps	8-ch 1080p lite @ 15 fps	4-ch 3K / 5 MP lite @ 12 fps
5.4 W (max.)	6.2 W (max.)	5.4 W (max.)
Motion Detection 2.0		AcuSense-enabled classified object detection
HDTVI / AHD / CVI / CVBS / IP video input		
H.265 & Scene-Adaptive Bitrate Control		

Up to **8 weeks** of video recording

DS-E04HGHI-E
Built-in 1 TB eSSD (960 GB available)
4-ch 1080p lite @ 15 fps
5.4 W (max.)
Motion Detection 2.0
HDTVI / AHD / CVI / CVBS / IP video input
H.265 & Scene-Adaptive Bitrate Control

Note: Recording times are 2, 4, or 8 weeks by default parameters and in test environments, with all channels connected to analog cameras. Actual recording time might be under 2, 4, or 8 weeks in real-world scenarios, depending on environment, connected equipment, etc.

DVRs with Motion Detection 2.0 / AcuSense



DS-7204HGHI-M1
4 Channel DVR with Motion Detection 2.0

- Deep learning based Motion Detection 2.0 on all 4 channels
- 1080p lite @ 15 fps
- Maximum 5 IP camera inputs (up to 2 MP)



DS-7208HGHI-M1
8 Channel DVR with Motion Detection 2.0

- Deep learning based Motion Detection 2.0 on all 8 channels
- 1080p lite @ 15 fps
- Maximum 10 IP camera inputs (up to 5 MP)



DS-7216HGHI-M1
16 Channel DVR with Motion Detection 2.0

- Deep learning based Motion Detection 2.0 on all 16 channels
- 1080p lite @ 15 fps
- Maximum 18 IP camera inputs (up to 5 MP)



iDS-7204HQHI-M1/S
4 Channel DVR with AcuSense

- Deep learning based Motion Detection 2.0 on all 4 channels
- Up to 2-ch deep learning based perimeter protection
- 3K / 5 MP lite @ 12 fps, 1080p @ 15 fps
- Maximum 6 IP camera inputs (up to 6 MP)



iDS-7208HQHI-M1(2)/S
8 Channel DVR with AcuSense

- Deep learning based Motion Detection 2.0 on all 8 channels
- Up to 4-ch deep learning based perimeter protection
- 3K / 5 MP lite @ 12 fps, 1080p @ 15 fps
- Maximum 12 IP camera inputs (up to 6 MP)



iDS-7216HQHI-M1(2)/S
16 Channel DVR with AcuSense

- Deep learning based Motion Detection 2.0 on all 16 channels
- Up to 4-ch deep learning based perimeter protection
- 3K / 5 MP lite @ 12 fps, 1080p @ 15 fps
- Maximum 24 IP camera inputs (up to 8 MP)



iDS-7204HUHI-M1(2)/S
4-channel DVR with AcuSense

- Deep learning based Motion Detection 2.0 on all 4 channels
- Up to 4-ch deep learning based perimeter protection
- 8 MP @ 8 fps (channel 1), 3K / 5 MP @ 12 fps
- Maximum 8 IP camera inputs (up to 8 MP)



iDS-7208HUHI-M1(2)/S
8-channel DVR with AcuSense

- Deep learning based Motion Detection 2.0 on all 8 channels
- Up to 4-ch deep learning based perimeter protection
- 8 MP @ 8 fps, 3K / 5 MP @ 12 fps
- Maximum 16 IP camera inputs (up to 8 MP)



iDS-7216HUHI-M2/S
16-channel DVR with AcuSense

- Deep learning based Motion Detection 2.0 on all 16 channels
- Up to 4-ch deep learning based perimeter protection
- 8 MP @ 8 fps, 3K / 5 MP @ 12 fps
- Maximum 32 IP camera inputs (up to 8 MP)



NEW

DS-2CD1023G2-LIU(F)
DS-2CD1043G2-LIU(F)
DS-2CD1063G2-LIU(F)
DS-2CD1083G2-LIU(F)
 2 / 4 / 6 / 8 MP Mini Bullet Camera

- 0.005 lux @ F1.6 [8 MP: 0.01 lux @ F2.0]
- CMOS sensor 2 MP 1/2.9", 4 MP 1/3", 6 MP 1/2.4", 8 MP 1/2.7"
- 2.8 / 4 mm lens
- Smart Hybrid Light
- Up to 30 m white light distance and 30 m IR distance
- H.265 / H.265+
- 3D DNR, 120 dB WDR (2 MP: Digital WDR)
- IP67



NEW

DS-2CD1123G2-LIU(F)
DS-2CD1143G2-LIU(F)
DS-2CD1163G2-LIU(F)
DS-2CD1183G2-LIU(F)
 2 / 4 / 6 / 8 MP Dome Camera

- 0.005 lux @ F1.6 [8 MP: 0.01 lux @ F2.0]
- CMOS sensor 2 MP 1/2.9", 4 MP 1/3", 6 MP 1/2.4", 8 MP 1/2.7"
- 2.8 / 4 mm lens
- Smart Hybrid Light
- Up to 30 m white light distance and 30 m IR distance
- H.265 / H.265+
- 3D DNR, 120 dB WDR (2 MP: Digital WDR)
- IP67, IK08



NEW

DS-2CD1323G2-LIU(F)
DS-2CD1343G2-LIU(F)
DS-2CD1363G2-LIU(F)
DS-2CD1383G2-LIU(F)
 2 / 4 / 6 / 8 MP Turret Camera

- 0.005 lux @ F1.6 [8 MP: 0.01 lux @ F2.0]
- CMOS sensor 2 MP 1/2.9", 4 MP 1/3", 6 MP 1/2.4", 8 MP 1/2.7"
- 2.8 / 4 mm lens
- Smart Hybrid Light
- Up to 30 m white light distance and 30 m IR distance
- H.265 / H.265+
- 3D DNR, 120 dB WDR (2 MP: Digital WDR)
- IP67



NEW

DS-2CD1023G2-LIUF/SL
DS-2CD1043G2-LIUF/SL
DS-2CD1063G2-LIUF/SL
DS-2CD1083G2-LIUF/SL
 2 / 4 / 6 / 8 MP Mini Bullet Camera

- 0.005 lux @ F1.6 [8 MP: 0.01 lux @ F2.0]
- CMOS sensor 2 MP 1/2.9", 4 MP 1/3", 6 MP 1/2.4", 8 MP 1/2.7"
- 2.8 / 4 mm lens
- Smart Hybrid Light
- Up to 30 m white light distance and 30 m IR distance
- Strobe Light & Audio Alarm
- H.265 / H.265+
- 3D DNR, 120 dB WDR (2 MP: Digital WDR)
- IP67



NEW

DS-2CD1323G2-LIUF/SL
DS-2CD1343G2-LIUF/SL
DS-2CD1363G2-LIUF/SL
DS-2CD1383G2-LIUF/SL
 2 / 4 / 6 / 8 MP Turret Camera

- 0.005 lux @ F1.6 [8 MP: 0.01 lux @ F2.0]
- CMOS sensor 2 MP 1/2.9", 4 MP 1/3", 6 MP 1/2.4", 8 MP 1/2.7"
- 2.8 / 4 mm lens
- Smart Hybrid Light
- Up to 30 m white light distance and 30 m IR distance
- Strobe Light & Audio Alarm
- H.265 / H.265+
- 3D DNR, 120 dB WDR (2 MP: Digital WDR)
- IP67



NEW

DS-2CD1T23G2-LIU(F)
DS-2CD1T43G2-LIU(F)
DS-2CD1T63G2-LIU(F)
DS-2CD1T83G2-LIU(F)
 2 / 4 / 6 / 8 MP Bullet Camera

- 0.005 lux @ F1.6 [8 MP: 0.01 lux @ F2.0]
- CMOS sensor 2 MP 1/2.9", 4 MP 1/3", 6 MP 1/2.4", 8 MP 1/2.7"
- 4 / 6 mm lens
- Smart Hybrid Light
- Up to 50 m white light distance and 50 m IR distance
- H.265 / H.265+
- 3D DNR, 120 dB WDR (2 MP: Digital WDR)
- IP67



NEW

DS-2CD1623G2-LIZ(S)U
DS-2CD1643G2-LIZ(S)U
DS-2CD1663G2-LIZ(S)U
 2 / 4 / 6 MP Bullet Camera

- 0.005 lux @ F1.6
- CMOS sensor 2 MP 1/2.9", 4 MP 1/3", 6 MP 1/2.4"
- 2.8-12 mm lens
- Smart Hybrid Light
- Up to 50 m white light distance and 50 m IR distance
- H.265 / H.265+
- 3D DNR, 120 dB WDR (2 MP: Digital WDR)
- IP67



NEW

DS-2CD1723G2-LIZ(S)U
DS-2CD1743G2-LIZ(S)U
DS-2CD1763G2-LIZ(S)U
 2 / 4 / 6 MP Dome Camera

- 0.005 lux @ F1.6
- CMOS sensor 2 MP 1/2.9", 4 MP 1/3", 6 MP 1/2.4"
- 2.8-12 mm lens
- Smart Hybrid Light
- Up to 30 m white light distance and 30 m IR distance
- H.265 / H.265+
- 3D DNR, 120 dB WDR (2 MP: Digital WDR)
- IP67, IK08



NEW

DS-2CD1T23G2-LIUF/SL
DS-2CD1T43G2-LIUF/SL
DS-2CD1T63G2-LIUF/SL
DS-2CD1T83G2-LIUF/SL
 2 / 4 / 6 / 8 MP Bullet Camera

- 0.005 lux @ F1.6 [8 MP: 0.01 lux @ F2.0]
- CMOS sensor 2 MP 1/2.9", 4 MP 1/3", 6 MP 1/2.4", 8 MP 1/2.7"
- 4 / 6 mm lens
- Smart Hybrid Light
- Up to 50 m white light distance and 50 m IR distance
- Strobe Light & Audio Alarm
- H.265 / H.265+
- 3D DNR, 120 dB WDR (2 MP: Digital WDR)
- IP67



NEW

DS-2CD1623G2-LIZSU/SL
DS-2CD1643G2-LIZSU/SL
DS-2CD1663G2-LIZSU/SL
 2 / 4 / 6 MP Bullet Camera

- 0.005 lux @ F1.6
- CMOS sensor 2 MP 1/2.9", 4 MP 1/3", 6 MP 1/2.4"
- 2.8-12 mm lens
- Smart Hybrid Light
- Up to 50 m white light distance and 50 m IR distance
- Strobe Light & Audio Alarm
- H.265 / H.265+
- 3D DNR, 120 dB WDR (2 MP: Digital WDR)
- IP67

eNVR Series



DS-E04NI-Q1

- 4-ch IP video input
- 1 TB SSD (pre-installed)
- Up to 4-ch @ 1080p decoding capability
- Up to 4 MP resolution



DS-E04NI-Q1/4P

- 4-ch IP video input
- 1 TB SSD (pre-installed)
- Up to 4-ch @ 1080p decoding capability
- Up to 4 MP resolution
- 4 PoE interfaces



DS-E08NI-Q1

- 8-ch IP video input
- 1 TB SSD (pre-installed)
- Up to 4-ch @ 1080p decoding capability
- Up to 4 MP resolution



DS-E08NI-Q1/8P

- 8-ch IP video input
- 1 TB SSD (pre-installed)
- Up to 4-ch @ 1080p decoding capability
- Up to 4 MP resolution
- 8 PoE interfaces

K Series NVRs with AcuSense



DS-7604NXI-K1(/4P)(B)
4-channel NVR with AcuSense

- Decoding capability:
AI on: 6-ch @ 1080p
AI off: 8-ch @ 1080p
- All channel of Motion Detection 2.0
- 1-ch perimeter protection
- 1-ch facial recognition for video stream, or 2-ch facial recognition for face picture
- /P: PoE



DS-7608NXI-K1(/8P)(B)
8-channel NVR with AcuSense

- Decoding capability:
AI on: 6-ch @ 1080p
AI off: 8-ch @ 1080p
- All channel of Motion Detection 2.0
- 1-ch perimeter protection
- 1-ch facial recognition for video stream, or 2-ch facial recognition for face picture
- /P: PoE



DS-7616NXI-K1(/16P)(B)
16-channel NVR with AcuSense

- Decoding capability:
AI on: 6-ch @ 1080p
AI off: 8-ch @ 1080p
- All channel of Motion Detection 2.0
- 1-ch perimeter protection
- 1-ch facial recognition for video stream, or 2-ch facial recognition for face picture



DS-7608NXI-K2(/8P)
4-channel NVR with AcuSense

- Decoding capability:
AI on: 8-ch @ 1080p
AI off: 12-ch @ 1080p
- All channel of Motion Detection 2.0
- 2-ch Perimeter protection
- 1-ch facial recognition for video stream, or 4-ch facial recognition for face picture



DS-7616NXI-K2(/16P)
8-channel NVR with AcuSense

- Decoding capability:
AI on: 8-ch @ 1080p
AI off: 12-ch @ 1080p
- All channel of Motion Detection 2.0
- 2-ch Perimeter protection
- 1-ch facial recognition for video stream, or 4-ch facial recognition for face picture



DS-7632NXI-K2(/16P)
32-channel NVR with AcuSense

- Decoding capability:
AI on: 8-ch @ 1080p
AI off: 12-ch @ 1080p
- All channel of Motion Detection 2.0
- 2-ch Perimeter protection
- 1-ch facial recognition for video stream, or 4-ch facial recognition for face picture