



## BUILT ENVIRONMENTS OVERVIEW

Sourcing & Commissioning Exceptional  
**ART • SCULPTURE • DESIGN**

British-Curated • Globally Placed  
Creators by Invitation

BECAUSE STANDARD IS FOR EVERYONE ELSE.

# WHY WE EXIST

---

Exceptional interiors depend on exceptional art and design.

Yet sourcing them is often fragmented - multiple studios, unclear timelines, uncertain feasibility and too much time spent qualifying what can realistically be delivered.

Artisan Collective was built to change that.

We support interior designers, architects, hospitality groups and developers in sourcing and commissioning distinctive British work - from sculptural centrepieces and integrated lighting to fine art, furniture and site-specific installations.

The Collective brings together over 150 leading independent creators, personally invited for the quality, reliability and range of their work - from refined focal points to landmark commissions.

You access that depth of talent through one carefully managed relationship.

We assess briefs early, test feasibility before options reach your client, and are direct when something will not work within the realities of budget, engineering, access or installation.

That protects your time, your reputation and the experience you deliver.





# WHAT SETS US APART

---

Interior projects move quickly. Decisions carry weight. Reputations are on the line.

Artisan Collective exists to make commissioning exceptional work feel calm, controlled and commercially sound.

## **Invite-only creators**

Every creator is personally selected for the quality of their work, technical capability and reliability on real-world projects.

## **Founder-led oversight**

High-value and complex briefs are handled directly, ensuring clarity, accountability and pace from the outset.

## **Transparent pricing**

Pricing is set by the creator. No inflated margins. No unnecessary layers.

## **Decision-ready proposals**

Clear, client-facing documents presenting works, specifications, timelines and next steps – produced quickly to match project momentum.

## **Designed for design professionals**

We protect your time, your budget and your reputation by filtering options early and addressing feasibility before anything reaches your client.

## **Curated for impact, not volume**

Every work earns its place – selected to elevate ambitious environments rather than fill walls.





# FOR PEOPLE SHAPING GREAT SPACES

---

For iconic interiors, hospitality destinations, workplaces and private residences.

We work with studios designing environments that feel considered and complete - sourcing sculpture, fine art, lighting, furniture, textiles and site-specific installations to suit the architecture and the people who inhabit it.

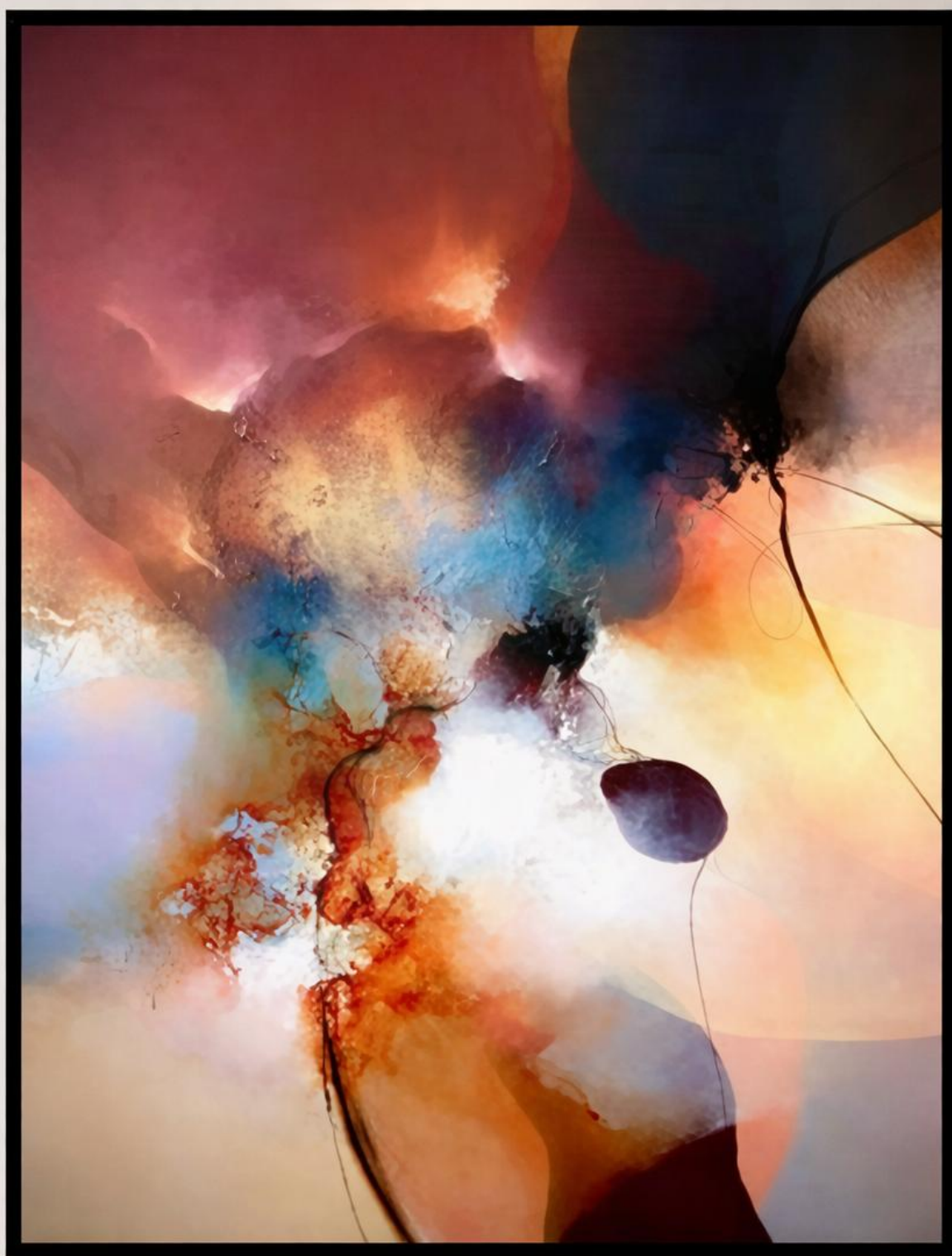
Whether the brief is for a statement piece in a lobby, an integrated artwork within a stairwell, a sculptural element for a courtyard, or a collection across multiple floors, our role is to enhance your vision rather than complicate it.

Tell us what you're working on, and we curate a focused set of options aligned to your design intent, practical constraints and delivery window.

Agile. Responsive.  
One proposal. No guesswork.  
Clear pricing, timelines and installation.  
Momentum matters.

We reduce administration, protect timelines and help you deliver with confidence.





# HOW WE WORK

---

Sourcing exceptional work should feel controlled, efficient and commercially sound.

After 35 years delivering six and seven-figure commercial projects, that experience shapes how every brief at Artisan Collective is run.

## **We start with your brief**

Design intent, site realities, access, budgets, timelines and client expectations.

## **Early feasibility**

We speak with the right creators before anything reaches your client - testing engineering, scale, production and installation from the outset.

## **Curated proposals**

One clear, client-ready document presenting selected works, specifications, pricing, timelines and next steps. Dual-branded versions can be produced where required.

## **Transparent delivery**

Production schedules, logistics and installation planning confirmed upfront.

## **One point of contact**

We manage the process end-to-end, keeping your team focused on design rather than administration.





# THE COLLECTIVE

---

Artisan Collective brings together over 150 exceptional British creators working across sculpture, fine art, design, lighting, furniture, textiles and bespoke installations.

Each creator is invited to join based on the quality of their work, technical capability and the standards they uphold in real-world projects.

The Collective is a curated network built to support interior studios, architects, hospitality groups and developers worldwide - from private residences to landmark commercial environments.

Independent studios.  
Connected through one trusted route.  
Global in scope.

When you work with Artisan Collective, you gain access to a depth of talent through a single, carefully managed relationship - with founder-led oversight from brief through to delivery.

WE ARE STRONGER TOGETHER THAN ALONE





# FOUNDER MESSAGE

---

I created Artisan Collective to make sourcing exceptional British art and design simpler, faster and more reliable for the people shaping ambitious spaces.

This is a platform where independent creators stand together – maintaining control of their work and their value – while connecting directly with the studios and clients who truly appreciate what they create.

By removing unnecessary barriers, everyone benefits – designers gain direct access, and creators retain the recognition and sustainability they deserve.

After 35 years in high-end commercial partnerships, I know the importance of confidence in the people you work with - clear communication, deadlines met and accountability at every stage.

When you engage with Artisan Collective, you work directly with me and with the creators themselves.

One trusted relationship.  
One shared focus.  
One smooth, reliable process.

Our goal is simple: Support your vision. Champion their craft.

Jay Willson  
Founder & Curator





# OUR ETHOS

---

## **Partnership, not procurement**

We collaborate closely with studios shaping considered spaces - offering insight, support and reliability throughout the process.

## **We protect what matters most**

Your vision. Your timeline. Your reputation.

## **Creators deserve fairness and respect**

Our model ensures creators retain more of their value, building a healthier future for British craftsmanship.

## **Clarity at every step**

Direct communication. Transparent information. No surprises.

## **We move with intent**

Focused. Efficient. Accountable.

## **We believe in collective strength**

When great work finds the right space, everyone succeeds.





# LET'S TALK

---

After 35 years delivering six and seven-figure commercial projects, I set out to build something calmer, more transparent and focused on long-term partnerships.

**Deadlines matter.  
Communication matters.  
Reputation matters.**

For interior studios, architects and hospitality teams, that means fewer variables, clearer decisions and a partner who understands what's at stake for your projects and your clients.

Whether you're sourcing a focal piece, developing a site-specific commission or planning a collection across multiple spaces, we're here to support with tailored sourcing, commissioning and delivery.

**NO MIDDLEMEN. NO MARKUPS. NO COMPROMISES**

**Jay Willson**  
*Founder & Curator*

+44 7870 396737

[jay@artisancollective.co.uk](mailto:jay@artisancollective.co.uk)

[www.artisancollective.co.uk](http://www.artisancollective.co.uk)



