

EXPERIENCE AUTUMN KALAMUNDA

**SIP, SAVOUR
& CELEBRATE**

The Bickley Harvest Festival is
calling.

**AUTUMN
FESTIVAL AT
S&R ORCHARD**

**MARCH
- JUNE**

2025

**ESCAPES & HIKE TRAILS
BICKLEY VALLEY SELF DRIVE**

Follow Us on Social Media
@experienceperthillskalamunda

WELCOME

Welcome to the Autumn Edition of EPHK Magazine!

Autumn is a spectacular time in the Perth Hills Kalamunda region, offering crisp air, vibrant landscapes, and an abundance of seasonal experiences.

This edition of EPHK Magazine invites you to explore the very best of our region—whether it's discovering picturesque walking trails, indulging in local food and wine, or immersing yourself in cultural events.

From the highly anticipated Bickley Harvest Festival to breathtaking hikes through golden-hued forests, this issue is filled with inspiration for your next adventure. As the temperatures cool, it's the perfect season to slow down, savour the moment, and connect with the heart of our community.

Enjoy the season and make the most of everything autumn has to offer!

Warm regards,
The EPHK Magazine Team


Perth Hills Kalamunda Visitor Centre
50 Railway Road
08 9257 9998

visitor.centre@kalamunda.wa.gov.au

Open Daily
9am - 4pm weekdays
10am - 4pm weekends

Find us on Social Media
[@experienceperthhillskalamunda](https://www.instagram.com/experienceperthhillskalamunda)



 Statham's Quarry

IN THIS ISSUE

4

Bickley Harvest Festival

A month-long celebration of local wine, food, and produce.

10

Autumn Festival at S&R Orchard

Immerse yourself in a seasonal wonderland of golden trees, family fun, and farm-fresh treats.

14

Accessible Adventures: Opening the Trails to All

Discover inclusive hiking experiences making the Perth Hills accessible for everyone.

17

Autumn Escapes

Find the perfect getaway with these cosy cottages.

18

Kalamunda, Bickley & Pickering Brook Self-Drive Map

Plan your perfect day trip with our detailed guide to key attractions and scenic routes.

20

Discover Stirk Park

Read about the rich history, playgrounds, and tranquil beauty of this much-loved community park.

25

Walks to Explore

The best trails to enjoy the crisp air and stunning scenery of the Perth Hills in autumn.

Image: Steve Bentley | Frames of the Forest





HAINAULT
VINEYARD

Bickley Harvest Festival

Autumn in the Perth Hills is nothing short of spectacular. The crisp air, golden vineyards, and rolling orchards create the perfect backdrop for one of the region's most beloved events —the Bickley Harvest Festival.




Autumn in the Perth Hills is nothing short of spectacular. The crisp air, golden vineyards, and rolling orchards create the perfect backdrop for one of the region's most popular events—the Bickley Harvest Festival. For more than 20 years, this festival has been a highlight on the calendar, bringing people together to celebrate local wine, food, and produce. But this year, things are getting even bigger.

For the first time, the Bickley Harvest Festival won't just be a weekend event—it's expanding to a full month of celebrations throughout May, with the main festival weekend kicking things off on 3rd and 4th May. More venues, more experiences, and more reasons to explore this hidden gem of Western Australia.

What started as a small gathering of growers and winemakers has grown into an annual pilgrimage for food and wine lovers from across the state. Despite its growth, the festival has kept its authentic, down-to-earth charm, showcasing the best of local craftsmanship, hospitality, and produce.

“We’re incredibly proud of our Bickley Harvest Festival. Each year, it brings thousands of visitors to this incredible pocket of WA. This year promises to be our biggest and best yet, with more venues than ever before and an unforgettable lineup of experiences.” — Tania, CEO of the Kalamunda Chamber of Commerce

If ever there was a year to visit the Bickley Harvest Festival, this is it. Local growers are reporting bumper crops, with some of the best harvests they've seen in years. The valley is bursting with produce, and the festival is a chance to taste it all at its peak.

A close-up photograph of a wooden table. In the foreground, two clear glass tumblers sit on a wooden coaster. The glass on the left contains water with a large ice cube and a fresh mint leaf. The glass on the right contains water with a slice of cucumber. In the background, a small white bowl holds a yellow sauce, and other food items are visible but out of focus.

“We loved the live music
and cheese pairing
workshop at the
Brookside pop-up.
Highlight of the day!”

Rob, 2024 Participant

The opening weekend sets the tone for the month ahead, with over 20 venues hosting unique and immersive experiences. Expect wine tastings, pop-up producer events, orchard tractor rides, and live entertainment across the valley.

Festival Highlights in 2025

This year, visitors can enjoy,

Exclusive Guided Tastings – Meet the winemakers and sip on new-release wines from some of WA’s most exciting boutique producers.

Art & Wine Experiences – Explore the creativity behind the wine industry, with immersive exhibits and live art installations at selected venues.

Orchard Tractor Rides – Tour the stunning orchards and get a behind-the-scenes look at how the valley’s fruit is grown and harvested.

Pop-Up Producers & Food Pairings – Sample fresh, local produce and enjoy unique food and wine pairings at pop-up events across the weekend.

Live Music & Atmosphere – Relax to the sounds of local musicians while soaking in the beauty of the valley’s autumn colours.



For visitors who have never been to the Bickley Valley, the festival is the perfect introduction. Despite being just a short drive from Perth, this region still feels like a well-kept secret.

With so much happening across the festival month, planning ahead is essential. Whether it’s securing a spot for a guided tasting or mapping out the best stops for a day of food and wine, visitors are encouraged to check the festival website for details on venues, schedules, and bookings.

From boutique wines and orchard tours to pop-up dining and live music, the Bickley Harvest Festival is an invitation to slow down, savour the season, and celebrate the hardworking producers who make this region so special.

Whether you come for the opening weekend or make a few trips throughout May, you’re guaranteed to discover something new.

Follow on Instagram & Facebook [@bickleyharvestfestival](#)
Visit the official website www.bickleyharvestfestival.com



Where to Eat in KALAMUNDA



- | | | |
|---|--|---------------------------------------|
| 1 Mason & Bird | 12 Kandel Pan and Grill | 25 The Coffee Club |
| 2 Kishi | 15 Red Rooster | 26 Sushi Sushi |
| 3 Kalamunda Tap House & The Tap House Café | 16 Viet Yummy Vietnamese Kitchen & Café | 27 Bakers Delight Kalamunda |
| 4 The Vault Restaurant | 17 Matteo's Pizza Kalamunda | 28 Pho One |
| 5 Cyrenian Café | 19 Muzz Buzz Kalamunda | 29 Subway Kalamunda |
| 6 Bakery 37 | 20 Dome Kalamunda | 30 Kalamunda Hotel |
| 7 Old Mates Café | 21 Domino's Pizza Kalamunda | 31 Kalamunda Fish and Chips |
| 8 Elevated Grounds Coffeehouse | 22 Red Gum Café | 32 The Cheese Shop Perth Hills |
| 9 Kalamunda's Jolly Fryer | 23 Taco María | 33 Inner Cup Kalamunda |
| 10 The Last Drop Tavern | 24 Kalamunda Bakery and Lunch Bar | |
| 11 Jack & Jill | | |

For opening hours, menus and more, please check with the venues



Award-winning small group *wine and food tours*



MEET THE LOCALS • UNCOVER HIDDEN GEMS
TASTE AWARD-WINNING WINE, SPIRITS & CIDER

VIEW OUR BICKLEY VALLEY TOURS →



upcloseandlocaltours.com.au



Autumn has arrived in the Perth Hills, and there's no better way to celebrate the season than by spending a crisp, golden-hued day at S&R Orchard's Autumn Festival! If you've been craving cosy orchard vibes, fun photo opportunities, and a laid-back hills atmosphere, this festival is your perfect autumn escape.

Running weekends only from **May 10th to June 8th**, S&R Orchard in Walliston transforms into a dreamy autumn wonderland where visitors can wander through rows of golden trees, crunch leaves underfoot, and snap gorgeous photos among the orchard foliage. Whether you're looking for a fun family outing, a cute date idea, or just an excuse to breathe in the fresh Perth Hills air, this festival has something for everyone.



S&R Orchard is famous for its seasonal beauty, and autumn is no exception. As you stroll through the orchard, you'll find adorable photo props scattered throughout, perfect for updating your profile pictures or capturing family memories. From rustic wooden swings to charming vintage carts, these backdrops add a whimsical touch to your autumn snaps. Even your four-legged friends can join in the fun – dogs are welcome on leads, so bring them for an adventure!

No festival is complete without delicious food, and S&R Orchard doesn't disappoint. A pop-up coffee shop ensures you can wrap your hands around a warm cup of coffee, while food vans and an ice cream stall serve up tasty treats for the whole family. Bring along a picnic basket or grab something onsite and settle in under the shady shelter with plenty of tables and chairs available.

Got little ones in tow? They'll love the teacup ride, tractor rides, and animal farm, giving them plenty of ways to burn off energy while you soak in the scenery. Meanwhile, couples and photographers will adore the tranquil beauty of the orchard, making it an idyllic setting for a slow, peaceful afternoon.

The Perth Hills are brimming with autumn adventures, so why not turn your visit into a full-day escape? After exploring the orchard, take a scenic drive to Lesmurdie Falls, stop by a Bickley Valley winery, or enjoy a cider tasting at the renowned Core Cider House. The crisp autumn air and rolling hills make for a magical day out.

So, grab your comfiest jumper or cardigan, rally your friends and family, and head to S&R Orchard's Autumn Festival for an experience filled with beauty and plenty of golden leaves. Don't forget your camera!

Plan Your Visit

Where: S&R Orchard, 36 Halleendale Rd, Walliston

When: Weekends only – 10 & 11, 17 & 18, 24 & 25, 31 May & 1, 7 & 8 June

Entry: \$12 per adult, \$5 per child (under 3's free) – No bookings required!

Accessibility: Wheelchair-friendly, though surfaces are gravel and grass. Toilets onsite.

Pet-friendly: Dogs welcome on leads!





Mosaic Workshops for the Beginner

Create a BEE BATH \$165

A bee bath is a simple bee water feeder in your garden, it is a nice touch to set out for your pollinating guests. A bee bath has different levels to allow the bees to access the water so they can step down and drink without drowning. After all, without these busy workers in the garden, you wouldn't have beautiful flowers or fruit and vegetables to harvest.

These mosaic classes are for the total beginner. There is no cutting of tiles, just gluing, all you need to do is choose a design.

In the 6-hour (1 day) workshop, you select tiles to glue to a terracotta saucer that is 30cm in diameter. You can follow an existing design or go your own way! There are many tiles to choose from: all shapes, sizes, and colours. Following the workshop, your pieces will dry overnight and then it must be grouted to ensure it is waterproof and ready for the garden. The grouting process will only take 15 minutes, and I send you home with colour photo instructions and a pack of materials.

The workshop is held at PERTH MOSAIC

47 Railway Road, Kalamunda.

All materials, morning tea & lunch is provided.

Perth Mosaic

Phone : 0448 905 590

email : info@perthmosaic.com.au

website : www.perthmosaic.com.au

facebook (workshops) :
www.facebook.com/PauletteTeacups

facebook (sales) :
www.facebook.com/PerthMosaic

instagram : @paulettesteacups

47 Railway Road, Kalamunda

Open Thursday to Sunday

10am till 4pm



For dates and bookings, see Eventbrite =

www.eventbrite.com/cc/mosaic-workshops-1233179



SCAN ME



KALAMUNDA
PERFORMING
ARTS CENTRE

UPCOMING SHOWS

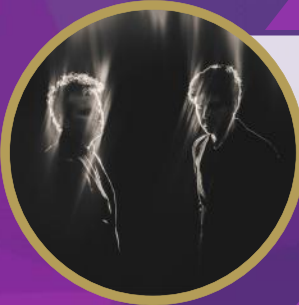
MARCH TO
JUNE 2025



Friday 28 Mar 2025 | 7:00pm
THE JARRAH CELTS



Sunday 30 Mar 2025 | 7:00pm
WENDY MATTHEWS IN CONCERT



Tuesday 8 Apr 2025 | 7:30pm
GRIGORYAN BROTHERS



Saturday 26 Apr 2025 | 7:00pm
BEN CATLEY IN CONCERT



Friday 2 May 2025 | 7:30pm
A.B. FACEY'S A FORTUNATE LIFE



Saturday 24 May 2025 | 7:30pm
**QUEEN FREDDIE & MAJOR TOM
TRIBUTE DOUBLE BILL**



Friday 30 May 2025 | 7:30pm
**THE GALLUS CEILIDH BAND
HOOLIE IN THE HILLS**



Saturday 31 May 2025 | 7:30pm
**LANDSLIDE - FLEETWOOD MAC
& STEVIE NICKS TRIBUTE**



Saturday 14 Jun 2025 | 7:00pm
WHALEBONE



Friday 7 Jun 2025 | 7:30pm
**BOGAN SHAKESPEARE
MACBETH**

**DON'T MISS OUR MORNING MUSIC SHOWS
ON THE FIRST WEDNESDAY OF EVERY MONTH**



ACCESSIBLE ADVENTURES

Opening the Trails to All with **Off The Beaten Track**



**Embrace
the
adventure
with an
inclusive
hiking
experience!**

Off The Beaten Track WA (OTBT) has long been celebrated for its diverse hiking experiences, offering adventurers the chance to explore Western Australia's natural beauty through meticulously crafted tours. From rugged multi-day treks along world-class long-distance trails to weekend getaways highlighting regional gems, OTBT caters to both seasoned hikers and newcomers alike. Their commitment to inclusivity is evident in offerings like the Hike-Ability program, designed to provide individuals living with disabilities the opportunity to immerse themselves in nature's therapeutic embrace.

In an exciting development for 2025, OTBT has partnered with the City of Kalamunda to introduce 'Accessible Adventures'. This initiative aims to make the picturesque trails of the Perth Hills accessible to everyone, regardless of physical capability. Recognising the rich tapestry of trails within the City of Kalamunda—ranging from the serene Whistlepipe Gully and Bibbulmun Track to the historic Kalamunda Railway Heritage Trail—this collaboration seeks to adapt and design hikes that accommodate various fitness levels and accessibility needs.



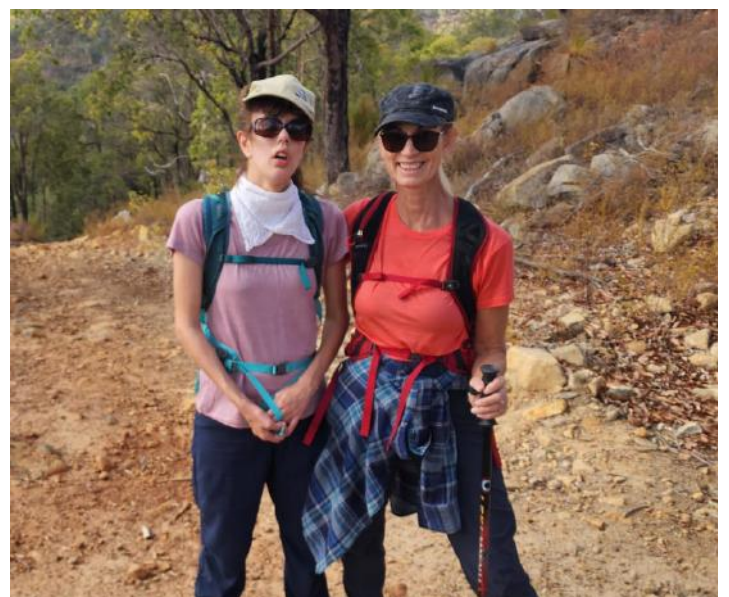
The 'Accessible Adventures' series will feature guided hikes led by trained professional Guides adept at assisting participants with diverse requirements. Each trail has been carefully selected and the delivery adapted where necessary to ensure safety and enjoyment for all. For instance, the Lesmurdie Falls Hike in September will be a gentle 2km wander along the banks of Lesmurdie Brook leading hikers to views from the base of Lesmurdie Falls. This hike offers gentle terrains and stunning valley views, making it an ideal choice for those living with a cognitive disability, low vision or low hearing.

Tracy Lindsey, founder of Off The Beaten Track WA, shared her enthusiasm for the initiative: "Our mission has always been to enrich lives through exceptional hiking experiences. Partnering with the City of Kalamunda for 'Accessible Adventures' allows us to extend this passion to a broader community, ensuring that nature's wonders are accessible to all."

The City of Kalamunda, known for its commitment to promoting outdoor recreation and preserving natural landscapes, views this partnership as a step forward in community inclusivity. By enhancing trail accessibility and offering guided experiences tailored to various abilities, the city aims to foster a deeper connection between individuals and the environment.

Participants can look forward to a range of hikes throughout 2025, each designed to showcase the unique flora, fauna, and scenic vistas of the Perth Hills. Whether it's the cascading waters of Lesmurdie Falls or the tranquil ambience of Whistlepipe Gully, 'Accessible Adventures' ensures that everyone can partake in the joy of exploration.

For more information on the 'Accessible Adventures' series or OTBT's Hike-Ability program and to register for upcoming hikes, visit Off The Beaten Track WA's official website. Embark on a journey where nature meets inclusivity and discover the Perth Hills like never before.



Find out more here: offthebeatentrack.com.au

PERTH OBSERVATORY

YOUR GATEWAY TO THE UNIVERSE

STEP INTO THE NIGHT, WHERE HISTORY WHISPERS THROUGH TELESCOPES AND THE COSMOS PERFORMS ITS TIMELESS BALLET. PERTH OBSERVATORY INVITES YOU TO WITNESS THE UNIVERSE AS IT WAS MEANT TO BE SEEN MAJESTIC, MYSTERIOUS, AND MARVELLOUSLY CLOSE.

Book your celestial escape today!
perthobservatory.com.au



Image: Redtail Cottage



REDTAIL COTTAGE

Where: Pickering Brook

Nestled on a 13-acre farm in the heart of orchard country, Redtail Cottage is perfect for a quiet escape with your partner or a weekend away with the family. With its fully equipped kitchen, BBQ, firepit, and games, it has everything you need for a snug autumn getaway.

Why You'll Love It:

- ✓ Gather around the firepit under the stars (April–November)
- ✓ Enjoy a fully self-contained 3-bedroom cottage
- ✓ Wander through state forests and fruit orchards right on your doorstep
- 📍 Book your stay: +61 418 939 469

Escape to the Perth Hills

Autumn is the best time to escape the city, slow down, and soak in the beauty of the Perth Hills. Whether you're craving a romantic retreat, a weekend with friends, or a solo reset, a cottage stay is the perfect way to unwind.

Here are four gorgeous cottages where you can sip local wine, explore the countryside, and enjoy a peaceful autumn escape.

SUNDOWNER COTTAGE

Where: Core Cider, Pickering Brook
Hidden away on 40 acres of orchards, Sundowner Cottage is a dreamy hideaway for couples or friends looking to relax and recharge. With its rustic charm and country air, it's the kind of place where time slows down.

Why You'll Love It:

- ✓ Stay just 35 minutes from the city, yet feel a world away
- ✓ Enjoy a complimentary bottle of Core Cider on arrival
- ✓ Take a morning stroll through the apple and pear orchards
- 📍 Book your stay: +61 8 9293 7583

Image: Sundowner Cottage



BICKLEY VALLEY COTTAGE

Where: Bickley

If you're looking for a mix of heritage charm and modern comfort, Bickley Valley Cottage is the perfect place to unwind. Set among the rolling hills of the Bickley Valley, this award-winning three-bedroom cottage offers stunning views and a sense of timeless beauty.

Why You'll Love It:

- ✓ Enjoy a fully refurbished luxury stay
- ✓ Wake up to breathtaking autumn landscapes
- ✓ Explore the Bickley Wine Trail, just minutes away
- 📍 Book your stay: +61 437 616 869

EDENSIDE COTTAGE

Where: Bickley

For those who love nature and adventure, Edenside Cottage is the ideal escape. Backing onto the State Forest and the Bickley Wine Trail, this charming 1920s cottage is the perfect base for hiking, biking, and wine tasting.

Why You'll Love It:

- ✓ Relax on the patio with a glass of local wine
- ✓ Watch the farm animals grazing in the fields
- ✓ Bring your dog along for the adventure (conditions apply)
- 📍 Book your stay: +61 429 611 432

Image: Edenside Cottage





Self-Drive Map

As we pass through this wonderful landscape, we acknowledge the Whadjuk Noongar people as the custodians of the land on which we walk and pay respect to Elders past, present and emerging.

- 1. Kalamunda Township/ Zig Zag Cultural Centre/ Perth Hills Visitor Centre:** Starting point. 50 Railway Road, Kalamunda. P, I, T, F, H, W.
Left turn at roundabout, Mundaring Weir Rd.
- 2. Bibbulmun Track Terminus/Railway Heritage Walk:**
Bibbulmun Track northern terminus, a world- renowned walk track of 1000km to Albany. Across road to south, Kalamunda Railway Heritage Trail. Both track and walks sites have information boards. P, I, Ta, H, C, W.
Proceed along Mundaring Weir Road.
Turn left at Crescent Road, Jorgensen Park sign.
- 3. Mundaring Weir Road, Jorgensen Park:** Mundaring Weir Road developed late 1930s, following a previous track. In 1895, Jacob Schmitt established a family estate, Hoch Heim ("High Place"). In 1928, 65 acres sold, creating Kalamunda's first golf club; now site of Jorgensen Park and Kalamunda Community Centre. P, T, Ta, B, Pl, W, H.
Return to Mundaring Weir Road, turn left. Roadsides feature granite and dolerite rock outcrops, and deep-weathered lateritic soils. Wildflowers in season. Valley views on left across Piesse Brook and former orchards, to Kalamunda and Beelu National Parks.
Optional Detour: Turn left Hummerston Road for a picturesque drive to Piesse Brook. Schipp Road on left accesses a walk trail. Turn right on to Aldersyde Road past orchards, turn left on to Mundaring Weir Road. Right turn into Aldersyde Road.
- 4. Bickley Valley:** Start of picturesque Bickley Valley, drained by Piesse Brook. Valley was location of government settlement scheme to repatriate soldiers after World War I. Valley was location of 5000 acre scheme. Stream an important source of farm water and fertile soils. Along the valley, remains of old buildings and exotic vegetation (some now pests). F, A.
Subsequent land uses: tourist accommodation, horse agistment, orchards, vineyards and specialised horticultural crops. Annual Bickley Harvest Festival held in early May.
At T-junction, turn left into Walnut Road.
- 5. Walnut Road:** Valley vistas, continuation of lifestyle holdings, orchards, vineyards, native forest, granite and dolerite rock outcrops. F
- 6. Korung National Park:** Vegetation includes jarrah, marri, grass trees, bull banksia. Wildflowers in season.
- 7. Perth Observatory:** Relocated here from city centre to escape light pollution in 1966. Heritage listed, 2005. Night and day tours. Observatory sits on second highest point (380 m) in the City of Kalamunda and has highest annual average rainfall for Perth metropolitan region. H
Return to Patterson Road, turn left.
- 8. Patterson Road:** Pass through Korung National Park, previously logged area. Note tree stumps, large, burnt-out jarrah trees which provide important habitats for native fauna.
📍 Inset map gives directions Patterson Road to Pickering Brook Road. Turn right at junction.
- 9. Orchard area:** Uses modern tree management methods (trellising, vase pruning) which aid mechanical harvesting, increase size and quality of fruits, and reduce risk of disease. Grown are stone fruits, apples, pears and citrus.
- 10. Pickering Brook Road/Carilla:** Once Perth's prime orchard area (established 1890s). Failed WWI soldier settlement scheme farms, many taken over by Italian settlers 1920/30s. At confluence of Piesse Brook tributaries is former town-site of Carilla ("running water"), created 1920s; re-named Pickering Brook, 1952. H.
- 11. Old Pine trees:** Large old pine trees and former site of Carilla PO/store/telephone exchange.
- 12. Pickering Brook Heritage Park:** Local heritage museum, housed in former Barton's Mill church and a prisoner's cell block. Open by appointment (phone Beverley Giumelli 0418923970). Pickering Brook Primary School stands adjacent, dating from 1916. H.
Turn left into Carinyah Road.
- 13. Pickering Brook Timber Mill:** Last operating mill in area.
Return to Pickering Brook Road, turn left.
- 14. Repatriation Road:** Optional detour. Attractive valley scenery along Piesse Brook back into Patterson/ Pickering Brook Roads.
- 15. Former Pickering Brook Railway Junction:** Near golf course, site of former Pickering Brook railway junction and spur lines to Karragullen and Canning Mills. Main line carrying timber and fruit ran back through Kalamunda, to Perth.
- 16. Former general store/information board:** Across road from old railway junction, remnants of 1900s general store, settlers' cottages. H, W.
- 17. Pickering Brook/Canning Road junction:** General store/ cafe. Proceed along Canning Road. F.
- 18. Turn left at Mason Mill Road** and left into road leading to Victoria Dam.
- 19. Mason Mill and Victoria Dam Roads:** Surrounding the Victoria Dam turn off from Mason Mill Road, is site of first timber mill in area, Mason Mill, established 1865. At its peak, settlement employed 100 men and families. H.
- 20. Victoria Dam entrance gate/car park** and information boards. Weekdays: Gate open 8:00am-5:00pm. Weekends: gate closed, dam access via walk trail from car park. W.
- 21. Infant's grave:** Grave of infant born 1876 to Richard and Mary Weston (built by Mr Weston, a miller, carpenter and wheelwright). H.
- 22. Victoria Dam second car park** open weekdays only. Dam access via walk trail. Dam was Perth's first permanent surface fresh water supply, completed 1891 (rebuilt and re-opened 1991). Remnants of timber (horse-drawn) tramway down Bickley Brook to Canning River where timber was taken to Fremantle. Wildflowers in season. T, Ta, H.
- 23. Return to Mason Mill Road,** turn left proceed to Canning Road, turn left.
- 24. Canning Road:** Pass Welshpool Road near top of which is Crystal Cavern gemstone museum and eucalyptus plantation, established 1970s.
- 25. Carmel Road:** Entry to Bickley Valley and boutique wineries/cafes. F
- 26. Former Chinese market garden:** North of Canning/ Pomeroy Road roundabout, on right, former Chinese market garden once fed by natural spring.
- 27. Orangedale:** Site of former orange orchard (Orangedale). Established 1880s by Wallis family after whom locality of Walliston is named.
- 28. Grove Road, to King Jarrah tree:** Turn right at Grove Road.
- 29. King Jarrah tree:** On corner Grove/Dianella Roads are the remains of a large, old King Jarrah tree.
Return to Canning Road, turn right.
- 30. Kalamunda Agricultural and Lesser Halls:** Heritage buildings. Agricultural Hall, first brick building in area (1896). Now includes Kalamunda Performing Arts Centre. H.
- 31. Darling Range Road Board:** Board founded 1897, building erected 1904. In 1978 the Road Board became the Shire of Kalamunda (currently known as City of Kalamunda). Building used as police station, now a cafe. F, H
- 32. Kalamunda Town Centre:** Haynes Street and surrounds. Cafes, boutique shops, shopping centre, fuel and toilets. P, I, T, F, H.

KALAMUNDA, BICKLEY, PICKERING BROOK

Self-Drive Trail #2

Kalamunda, Bickley, Pickering Brook

Distance 45km

8 Points of Interest

- Roads
- Self-drive route
- Optional detour
- Walk/Ride Trails
- Information
- Toilet
- Parking
- Historic site
- Museum
- BBQ
- Picnic table
- Playground
- Cafe
- Fruit/Vegetables
- Restaurant
- Distillery
- Winery
- Golf Course
- Service Station



Disclaimer: The City of Kalamunda accepts no responsibility for the accuracy of this image or the results of any actions taken when using this map. Based on information provided by Kalamunda Volunteers and with the permission of the Western Australian Land Information Authority (DLI).

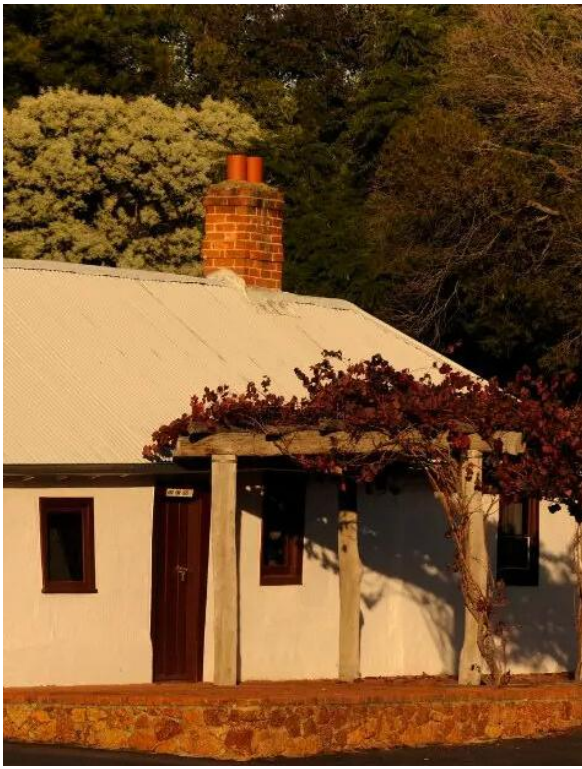


STIRK PARK

Tucked away in the heart of Kalamunda, Stirk Park is a place where history and modern-day charm come together. Whether you're exploring the heritage-listed Stirk Cottage, taking the kids to the brand-new adventure playground and skate park, or simply soaking in the golden hues of autumn, this much-loved park has something for everyone.

Stirk Cottage, Kalamunda's first home, is one of the park's most treasured features. Built in 1881 by early settlers Frederick and Elizabeth Stirk, this humble cottage was lovingly crafted with materials sourced straight from the bush. Today, it stands as a living museum, offering a rare glimpse into what life was like for the pioneers of the Perth Hills.

Stepping inside feels like travelling back in time. You can explore the well-preserved rooms, admire the antique furniture, and learn about the Stirk family's role in shaping the local community. It's a must-visit for history lovers and a fantastic way to introduce kids to the rich heritage of Kalamunda.



While history buffs will love the cottage, families and adventure-seekers will be drawn to Stirk Park's exciting new additions. The adventure playground, which opened in late 2023, has quickly become a favourite spot for local families. With slides, climbing structures, swings, and nature-inspired play areas, it's perfect for little explorers looking for fun.

Right next to the playground, the brand-new skate park is a dream come true for skateboarders, BMX riders, and scooter enthusiasts. Featuring one of WA's largest half-pipes, it's already attracting riders of all skill levels. Whether you're a beginner learning the ropes or a pro showing off your best tricks, it's a fantastic spot to connect, play, and challenge yourself.



There's no doubt that Stirk Park is beautiful all year round, but autumn brings a special kind of magic. The trees scattered throughout the park turn brilliant shades of red, orange, and gold, creating the perfect backdrop for a relaxing day out. The crisp air, gentle sunshine, and fallen leaves crunching underfoot make it an ideal spot for a leisurely walk, a family picnic, or a quiet moment to unwind.

If you love photography, bring your camera—Stirk Park in autumn is a dream for capturing stunning seasonal landscapes. Whether it's a golden-hued tree reflected in the lake or kids playing among the fallen leaves, there are endless picture-perfect moments waiting to be snapped. Located just a short stroll from Kalamunda town centre, Stirk Park is easy to get to and offers something for visitors of all ages. Whether you're here to explore local history, enjoy a fun-filled day with the family, or simply take in the beauty of autumn, it's a place that invites you to slow down, breathe in the fresh air, and make lasting memories.

So why not grab a coffee from a nearby café, wander through the park, and experience the magic of autumn in Kalamunda?





Perth Hills Kalamunda Visitor Centre

50 Railway Road, Kalamunda
08 9257 9998

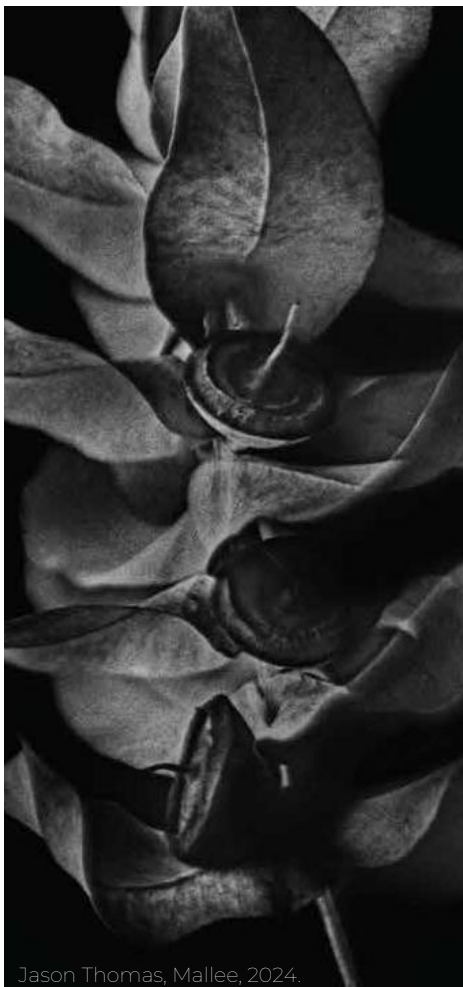
visitor.centre@kalamunda.wa.gov.au

Open daily: 9am - 4pm weekdays,
10am - 4pm weekends and some public holidays

20 Kalamunda 25 Art Awards



Mandy White, 'Creatures and Critics', 2024.



Jason Thomas, 'Mallee', 2024.



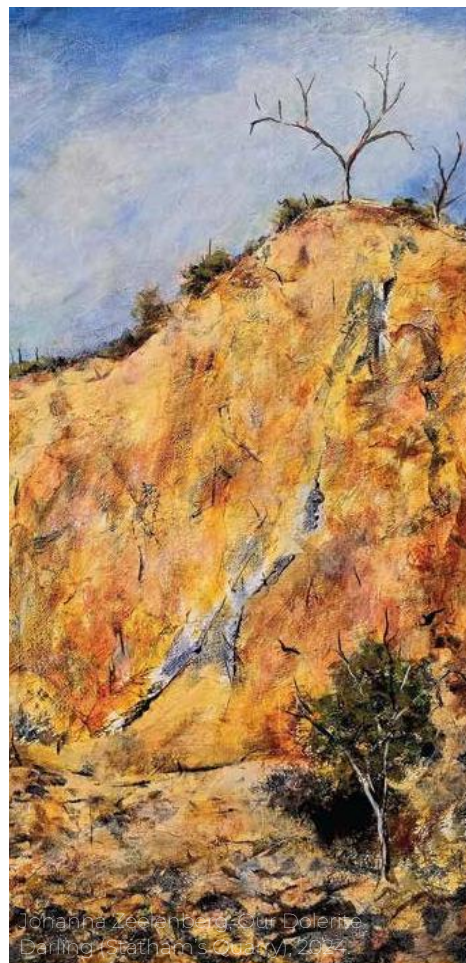
Gillian Roulston, 'Mellenbye Rock', 2024.



Mikaela Castledine, 'The Little House with the Yellow Roof', 2024.



Breyon Gibbs, 'A Wild Age to See', 2025.



Johanna Zeelenberg, 'Our Dolerite, Darling Statham's Country', 2022.

Kalamunda Art Awards

15 March – April 6

Mon-Fri: 9am-4pm | Sat-Sun: 10am-4pm
50 Railway Road, Kalamunda | 9257 9998
zzgallery@kalamunda.wa.gov.au
kalamunda.wa.gov.au/gallery



Frida Aditi, Paige Ahloo, Deborah Allen, Maggie Austen, Ron Bailey, Marilyn Barrington, Dixie Bartle, Cole Baxter, Robyn Beardsell, Una Bell, Nola Boughton, Vanessa Brown, Tanya Cain, Susan Carameli, Mikaela Castledine, Ming Yui Cheung, Clara Cook, Angelena Crotty, Samuel Desmaris, Brett Leigh Dicks, John Eden, Willemina Foeken, Barbara Gell, Breyon Gibbs, Claire Gilham-Martin, Jane Gimme, Geraldine Gustavino, Kat Hardwick, Karin Hotchkin, Cath Inman, Lynley Jakowyna, Paul Johnson, Karri Studio, Nicholas Kempt, Peter Efford, Rosita Krueger, Joowon Lee, Jo-Anne Maire, Sveta Mears, Jane Meleisea, Gordon Mitchell, Monisha Mohanraj, Paul Moro, Ian Moss, Kalarni Murray, Leah Nanala, Anne O'Leary, Holly O'Meehan, Lionel Penketh, Abhijit Prasanth, Kleopatra Preece, Crystal Quartermaine, Jennifer Rawlinson, David Jay Reed, Samara Williams Reith, Kerry Richardson, Merry Robertson, Possum Rose, Gillian Roulston, Mia Schoen, Rosemary Schoen, Jacqui Smith, Allison Snell, Sarah Soulay, Shirley Spencer, Myra Staffa, Juliet Tang, Mel Taylor, Jason Thomas, Netta Thompson, Lisa Triscari, Alexandra Trovato, Brian Warburton, Demelza Wheatcroft, Mandy White, Annette Wiguna, Paris Wilkinson, Eve Wolfe, Johanna Zeelenberg, Danica Zuks.



Statham's Quarry



Steve Gentry
PHOTOGRAPHY

Walks to Explore in Kalamunda

Autumn is the best time to explore the stunning trails in and around Kalamunda, with cooler temperatures making for ideal walking conditions. Whether you're seeking panoramic views, historical landmarks, or tranquil bushland, these three trails offer a fantastic way to experience the season at its best.

Statham's Quarry Walk, Gooseberry Hill

For those looking for an adventurous trek with a touch of history, Statham's Quarry Walk is a must. This 5.9km loop trail winds through Gooseberry Hill National Park, offering stunning vistas of the Darling Scarp and the Swan Coastal Plain. Along the way, you'll encounter the remnants of Statham's Quarry, which dates back to 1894 and played a key role in Perth's early construction projects. The walk also takes you past the old Zig Zag Railway, once used for timber transport. Be prepared for a moderately challenging journey, with some rocky sections requiring careful footing.

Carmel Walk, Pickering Brook

For a gentler walk that still delivers breathtaking scenery, the Carmel Walk in Pickering Brook is an excellent choice. This 5.1km loop trail meanders through the serene Korung National Park, where towering trees provide a natural canopy of shade. Along the way, you'll pass working farmland and picturesque fruit orchards, making this a particularly rewarding walk during the harvest season. The Carmel Walk is well-marked with red triangle trail markers, but some may be faded, so having a map on hand is recommended.

Lesmurdie Brook Loop, Mundy Regional Park

Ideal for families or those seeking a shorter, more relaxed walk, the Lesmurdie Brook Loop is a 1.5km trail that follows the peaceful Lesmurdie Brook. This easy loop trail offers plenty of opportunities to stop and admire the cascading waters, particularly after seasonal rains. Wooden bridges and seating areas allow walkers to pause and soak in the surroundings, with Lesmurdie Falls providing a spectacular finish. If you're feeling adventurous, the area offers additional trails of varying lengths and difficulty, making it easy to extend your visit.

Plan Your Autumn Adventure

With cooler temperatures and nature's golden hues on display, autumn is the perfect season to explore Kalamunda's many walking trails. Be sure to bring water, wear sturdy footwear, and check trail maps before setting out. For more information on these and other trails, visit the Trails WA website at trails.wa.com.au.



Perth Hills Kalamunda
Visitor Centre

50 Railway Road
08 9257 9998

visitor.centre@kalamunda.wa.gov.au

Open Daily
9am - 4pm weekdays
10am - 4pm weekends

EXPERIENCE
**PERTH
HILLS**
KALAMUNDA