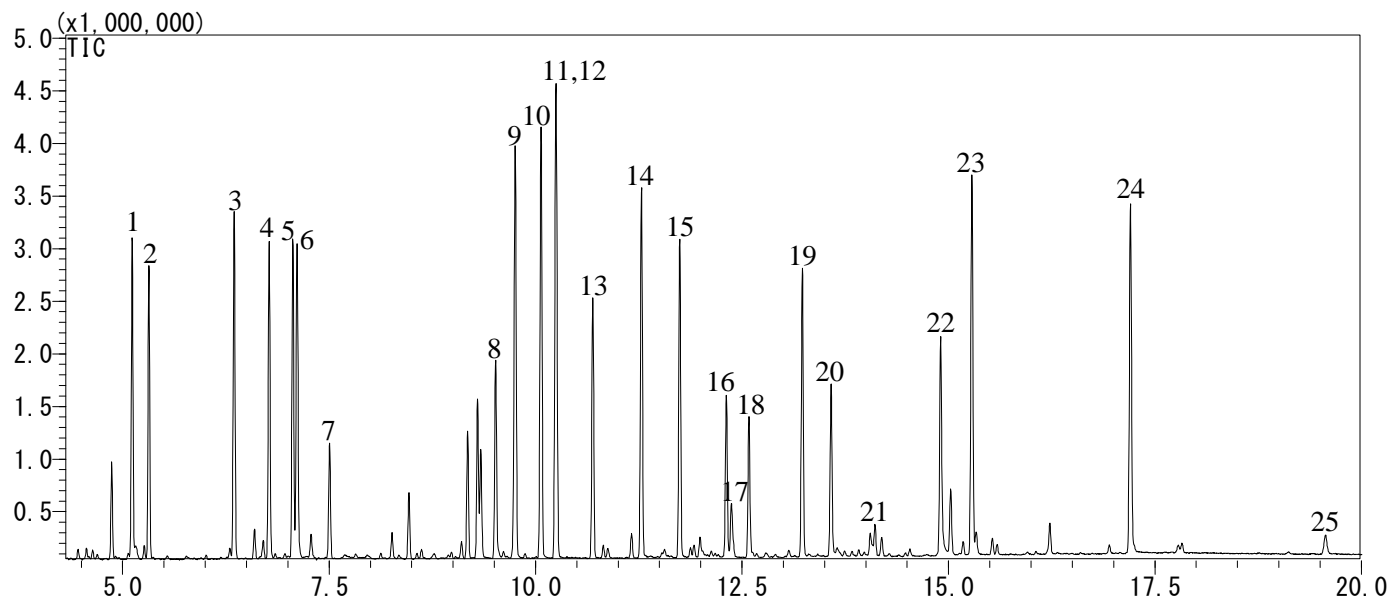


## Analysis of Amino Acids as *tert.*-Buthyldimethylsilyl Derivatives

Data No. GA249-0874



### Conditions

**System** : GC-MS  
**Column** : InertCap 5MS/NP  
0.25 mm I.D. x 30 m df = 0.25 µm  
**Col. Cat. No.** : 1010-18642  
**Col. Temp.** : 150 °C(2 min) - 10 °C/min - 300 °C(3 min)  
**Carrier Gas** : He 40 cm/s  
**Injection** : Split 1:20  
280 °C  
**Detection** : MS Scan ( $m/z = 45 - 800$ )  
Interface Temp. 280 °C  
**Sample Size** : 50 mg/L  
1.0 µL

# InertSearch™ for GC

InertCap® Applications

## Analyte :

1. Alanine
2. Glycine
3. Valine
4. Leucine
5. *allo*-Isoleucine
6. Isoleucine
7. Proline
8. Methionine
9. Serine
10. Threonine
11. *allo*-Threonine
12. Hydroxyproline (converted from Proline)
13. Phenylalanine
14. Asparagine acid
15. Cysteine
16. Glutamine acid
17. Ornithine (converted from Arginine)
18. Asparagine
19. Lysine
20. Glutamine
21. Arginine
22. Histidine
23. Tyrosine
24. Typtophane
25. Cystine (converted from Cystein)

(Deriv. by MTBSTFA)

## **Referance**

Christopher J. Biermann et al., *J. Chromatography.*, 357, 330-334(1986)

Thomas P. Mawhinney et al., *J. Chromatography.*, 358, 231-242(1986)

S. L. MacKenzie et al., *J.Chromatography.*, 387, 241-253(1987)

H. J. Chaves Das Neves et al., *J. Chromatography.*, 392, 249-258(1987)