

Walton Arts Center 2025/26

Classroom Series



Spotlight on Learning!

Unlock **educational** goals through amazing **arts experiences**.

ALL SHOWS
FREE!
FOR K-12
SCHOOLS

2025/26 Walton Arts Center Classroom Series

Age Group Symbols - Pick your icon!

Follow these symbols to find the best performance for your students.

LE Lower Elementary

UE Upper Elementary

M Middle School

JH Junior High School

HS High School

Based on a Book

2025

SEPTEMBER

Symphony of Northwest Arkansas

SEPT. 19 & OCT. 31 | MUSIC **M** **JH** **HS**

Skerryvore

SEPT. 23 | MUSIC **M** **JH** **HS**

OCTOBER

The Remember Balloons

OCT. 2-3 | DANCE **LE** **UE**

Maebelle's Suitcase

OCT. 6-10 | PUPPETRY **LE** **UE**

Reduced Shakespeare Company:
All the Great Books

OCT. 7 | THEATER **JH** **HS**

Sugar Skull!

OCT. 9 | THEATER **UE** **M**

Maddi's Fridge

OCT. 22-23 | THEATER **LE** **UE** **M**

NOVEMBER

Soweto Gospel Choir

NOV. 17 | MUSIC **M** **JH** **HS**

Dog Man: The Musical

NOV. 20-21 | THEATER **LE** **UE**

DECEMBER

The Fabulous Equinox Orchestra

DEC. 18 | MUSIC **UE** **M** **JH** **HS**

2026

MARCH

BODYTRAFFIC

MARCH 5 | DANCE **M** **JH** **HS**

Secrets of Space

MARCH 10-11 | THEATER **UE** **M**

Billy Goats Gruff and Other Tales

MARCH 31-APRIL 2 | THEATER **LE**

APRIL

Hare and Tortoise

APRIL 6-7 | MUSIC **LE** **UE**

Voctave

APRIL 10 | MUSIC **M** **JH** **HS**

Dinosaur World Live

APRIL 29 | PUPPETRY **LE** **UE** **M**

MAY

The American Revolution

MAY 4-6 | THEATER **M** **JH** **HS**

Link Up: *The Orchestra Swings*

MAY 7 | MUSIC **UE**

National Geographic Live:

The Wild Wolves of Yellowstone

MAY 12 | FILM **UE** **M** **JH** **HS**

Classroom Series **Registration**

SCAN FOR
REGISTRATION



Registration requests are accepted through our new online portal beginning August 1, 2025. Visit waltonartscenter.org/edu/students-teachers/school-series/

Questions? Call 479.397.1608 or email schools@waltonartscenter.org

Important information:

- + We have a growing number of schools participating in our educational programs, and we reach capacity for many performances throughout the year. We recommend registering early.
- + Registrations are not complete until a confirmation email is received. Registrations are processed in the order in which they are received. Due to high volume early in our season, confirmations may take up to two weeks.
- + We do not issue tickets. Seating is general admission.
- + School groups receive one adult ticket per every eight student tickets to accommodate teachers, parents and other adult chaperones.
- + Performances last approximately one hour, unless otherwise noted.

Transportation Subsidy

Thanks to the J.B. Hunt Transportation, Inc. Bus Subsidy, Walton Arts Center will cover a portion of school bus costs for the 2025-26 school year. The amount awarded is based on each school's distance from the venue and how many students participate. Subsidy payments are calculated in May and will be paid to qualifying schools by June 30, 2026.

Who gets to participate? **Why** does it matter?

When students learn through the arts they develop the critical thinking, collaborative and creative skills necessary to succeed. When students explore their community's cultural amenities, including Walton Arts Center, they build cultural capital to help them reach the dreams of adulthood.

Walton Arts Center envisions a community where every child participates in high quality arts experiences, both in school and beyond its walls. It will take all of us working together to realize this vision of a well-rounded education that every child in Northwest Arkansas, no matter where they go to school, deserves.



theater & film

Reduced Shakespeare Company: All the Great Books

OCTOBER 7, 2025 | 10AM

📍 Baum Walker Hall at Walton Arts Center
Huckleberry Finn, Don Quixote, The Scarlet Letter, Moby Dick, The Odyssey, Frankenstein, Oliver Twist, Sherlock Holmes, Tess of the d'Urbervilles and more - The Reduced Shakespeare Company takes you through its compact compendium of the world's great books. Founded in 1981, The Reduced Shakespeare Company is a beloved American acting troupe that performs fast-paced, seemingly improvisational condensations of different topics featuring both physical and verbal humor.

JH HS

BEST FOR: Junior High and High School

Arkansas Learning Standards: English Language Arts: 6.RC.10.RL, 6.CC.7.SLC, 7.RC.6.RL, 7.RC.8.RL, 7.RC.10.RL, 7.CC.4.SLC, 8.RC.5.RL, 8.CC.4.SLC, 9.RC.4.RF, 9.V.5, 9.CC.6.SLC, 10.RC.6.RL, 10.RC.7.RL, 10.V.5, 10.CC.6.SLC, 11.RC.5.RL, 11.RC.8.RL, 11.V.2, 11.CC.6.SLC, 12.RC.5.RL, 12.RC.7.RL, 12.V.2, 12.CC.6.SLC. Fine Arts Theatre: CR.3.1, PR.4.1, RE.7.1 and 2, RE.8.1 and 2, RE.9.1, CN.10.1, CN.11.1 and 2. Theatre Appreciation: PR.4, RE.7-9, CN.10, CN.11.



Reduced Shakespeare Company



Sugar Skull!

Sugar Skull! A Dia de Muertos Musical Adventure

OCTOBER 9, 2025 | 9:30 & 11:30AM

📍 Baum Walker Hall at Walton Arts Center

Meet 12-year-old Vita Flores. She thinks her family has gone loco planning a celebration for deceased loved ones. Why throw a party for the dead? But when a spirited candy skeleton suddenly springs to life, Vita finds herself on a musical journey to unravel the true meaning of Día de Muertos. On this journey, she meets Sugar Skull, a charismatic skeleton, and dances with ancient ancestors, sings with a sorrowful sorceress, escapes the trickster Chaneyques and even meets the famous Catrina Calavera. But can this clever youth gather the missing pieces needed for her family *ofrenda* (offering) before it's too late? *Sugar Skull!* is a bilingual/bicultural musical that uses traditional regional music and dance from Mexico.

UE M

BEST FOR: Upper Elementary & Middle School

Arkansas Learning Standards: Fine Arts Music: PR.4; RE.7; RE.8; CN.10; CN.11; Vocal Ensemble: PR.4.2; RE.7; RE.8; CN.10; CN.11. Music Appreciation: CR.2, PR.6, RE.7-9, CN.10-11. Fine Arts Theatre: CR.3.1, R.4.1, RE.7.1 and 2, RE.8.1 and 2, RE.9.1, CN.10.1, CN.11.1 and 2. Theatre Appreciation: PR.4, RE.7-9, CN.10, CN.11. Fine Arts Dance: E.8; RE.9; CN.10; CN.11. World Languages CMC.1; CLT.2; CNN.2; CMP.2 and CMN.1. 10.

Show Underwriter:
Wendy Jean Bennett

Maddi's Fridge

OCTOBER 22 & 23, 2025 | 9:30 & 11:30AM

📍 Baum Walker Hall at Walton Arts Center

Maddi and Sofia are best friends. They live in the same neighborhood, go to the same school and play in the park together. Maddi is really good at climbing the rock wall, while Sofia is a fast runner. One day Sofia discovers that Maddi has no food in her fridge at home, but Maddi makes her promise not to tell anyone and to keep it a secret. What should Sofia do? Based on the book by Lois Brandt, and brought to us by Childsplay Theatre of Tempe, Arizona, *Maddi's Fridge* is a thoughtful and funny exploration of friendship, empathy and doing the right thing.

LE UE

BEST FOR: Lower Elementary and Upper Elementary

Arkansas Learning Standards: Language Arts: K.RC.8-12.RL, K.RC.1-3.RF; 1.RC.1-3.RF, 1.RC.7-12.RL, 1.CC.1-3.P; 2.RC.1-3.RF, 2.RC.7-12.RL, 2.CC.1-2.OL; 3.RC.1-2.RF, 3.RC.7-8.RL, 3.CC.1-2.OL; 4.RC.1-2.RF, 4.RC.7-11.RL, 4.CC.1-2.OL, Fine Arts Theatre: RE.7.1 and 2, RE.8.1 RE.8.2, RE.9.1, CN.10.1, CN.11.1, CN.11.2. Theatre Appreciation: RE.7 – 9, CN.11. Music: RE.7 – 9, CN.10, CN.11. Music Appreciation: RE.7-9, CN.10, CN.11.



Maddi's Fridge

Dog Man: The Musical

NOVEMBER 20 & 21, 2025 | 9:30 & 11:45AM

RUNTIME 82 MINUTES

📍 Baum Walker Hall at Walton Arts Center

With the head of a dog and the body of a policeman, Dog Man loves to fight crime and chew on the furniture. But while trying his best to be a good boy, can he save the city from Flippy the cyborg fish and his army of Beastly Buildings? Can he catch Petey, the world's most evil cat, who has cloned himself to exact revenge on the doggy do-gooder? And will George and Harold finish their show before lunchtime? Find out in this epic musical adventure, based on Dav Pilkey's worldwide bestselling Dog Man book series.

LE

BEST FOR: Lower Elementary (second-graders)

Arkansas Learning Standards: English Language Arts: 2.RC.1-3.RF, 2.RC.7-12.RL, 2.CC.1-2.OL, 2.CC.3.P, 2.CC.5.P; 3.RC.1-2.RF, 3.RC.7-8.RL, 3.CC.1-2.OL, 3.CC.3.P; 3.CC.5.P. Fine Arts Standards Theatre: RE.7.1 and 2, RE.8.1 and 2, RE.9.1, RE.9.2, CN.10.1, CN.11.1 and 2. Musical Theatre: RE.7.1, RE.7.3, RE.7.4, RE.8. Theatre Appreciation: PR.4, RE.7, 8 and 9, CN.10 and 11. Music: RE.7, 8 and 9, CN.10, CN.11.



*Dog Man:
The Musical*

Cahoots NI: *Secrets of Space*

MARCH 10 | 1PM & **MARCH 11, 2026** | 9:30 & 11:30AM

📍 Baum Walker Hall at Walton Arts Center

Suni and Mae are dreamers. As young girls, they dream about journeying far beyond our solar system, singing among the stars and discovering all that is unknown to them: the secrets of space. Using magical illusions and a state-of-the-art digital LED wall, the sisters and the audience embark on an interactive journey across the galaxy. The wonders of outer space are explored with dazzling imagery and key ideas and inventions in science, technology and engineering.

Brought to you by Cahoots NI, *Secrets of Space* has been developed with leading space industry experts and features curriculum connections for elementary school audiences in STEAM learning.

UE M

BEST FOR: Upper Elementary & Middle School

Arkansas Learning Standards: Science

- Earth's Systems 2-ESS1-1; Forces and Interactions 3-PS2-2; Structure, Function and Information Processing 4-PS4-2; Energy 4-PS3-2; Earth's Systems: 5-ESS2-1 and 5-ESS3-1; Space systems: 5-PS2-1 and 5-ESS1-1; Earth's Systems 6-ESS2-4. Social Studies - History: H.12.3.3; H.12.3.4; H.12.4.4. English Language Arts: RL.3.2, RL.4.2, RL.5.2; RL.3.6, RL.4.6, RL.5.6; RI.3.3, RI.4.3, RI.5.3; W.3.8, W.4.8, W.5.8; SL.3.1, SL.4.1, SL.5.1; SL.3.4, SL.4.4, SL.5.4; SL.3.5, SL.4.5, SL.5.5; L.3.3, L.4.3, L.5.3. Fine Arts Standards Theatre: CR.3.1, CR1.4.1, CR1.5.1; PR.4.1; RE.7.1, RE.7.2; RE.8.1, RE.8.1; RE.8.2, R.9.1; CN.10.1, CN.11.1; CN.11.2. Theatre Appreciation: PR.4; RE.7, 8 and 9; CN.10-11. Music: RE.7, 8 and 9.



Tutti Frutti Productions: *Hare and Tortoise*

APRIL 6 & 7, 2026 | 9:30 & 11:30AM

📍 Starr Theater at Walton Arts Center

This playful and imaginative adaptation of Aesop's classic fable is brought to life on stage in a vibrant performance. With three talented actor-musicians and a whole lot of energy, the story unfolds across the seasons, from the blossoming days of sunny spring through the icy sparkle of winter. This heartwarming tale explores patience, friendship and what it means to grow up. Brought to us by Tutti Frutti Productions, this much-loved story is brimming with fun, live music, unforgettable songs and delightful characters.

LE

BEST FOR: Lower Elementary

Arkansas Learning Standards: Language Arts:

K.RC.8-12.RL, K.RC.1-3.RF; 1.RC.1-3.RF, 1.RC.7-12.RL, 1.CC.1-3.P; 2.RC.1-3.RF, 2.RC.7-12.RL, 2.CC.1-2.OL; 3.RC.1-2.RF, 3.RC.7-8.RL, 3.CC.1-2.OL; 4.RC.1-2.RF, 4.RC.7-11.RL, 4.CC.1-2.OL. Science: LS3.A-B, 3-LS2-1, 3-LS4-3. Fine Arts Theatre: RE.7.1 and 2, RE.8.1 RE.8.2, RE.9.1, CN.10.1, CN.11.1, CN.11.2. Theatre Appreciation: RE.7-9, CN.11. Music: RE.7-9, CN.10, CN.11. Music Appreciation: RE.7-9, CN.10, CN.11.





The American Revolution

Show Underwriter: *John & Diana Marshall*

Theater Unspeakable: *The American Revolution*

MAY 4-6, 2026 | 9:30 & 11:30AM

📍 Starr Theater at Walton Arts Center

History in 50 minutes – seven actors, on an elevated platform, share 21 square feet of space to recreate the entire American fight for independence from Lexington to Yorktown with astonishing accuracy. Using only their bodies, voices and (pantomimed) cannons, the show evokes an epic period in American history by combining tongue-in-cheek humor with physical comedy to create an unforgettable experience. Theater Unspeakable brings *The American Revolution* on the road in 2026 in honor of America's 250th anniversary!

M JH HS

BEST FOR: Middle School through High School

Arkansas Learning Standards: English Language Arts: 6.RC.8-10. RL, 6.CC.4.SLC, 6.CC.5-7.SLC; 7.RC.5.RL, 7.RC.8.RL, 7.RC.10.RL; 7.CC.5-6.SLC, 7.CC.10.P; 8.RC.8-9.RL, 8.CC.4-6.SLC, 8.CC.9.P; 9.RC.8-10. RL, 9.CC.1-2.SLC, 9.CC.5-6.SLC; 10.RC.5.RL, 10.RC.7-10. RL, 10.V.5, 10.CC.1-2.SLC, 10.CC.4-6.SLC; 11.RC.5.RL, 11.RC.8-11. RL, 11.V.6, 11.CC.1-2.SLC, 11.CC.4-6.SLC, 11.CC.12.P; 12.RC.5.RL, 12.RC.7-9. RL, 12.V.5-6, 12.CC.1-2.SLC, 12.CC.4-6.SLC, 12.CC.12.P. Fine Arts Standards Theatre: CR.3.1, CR1.4.1, CR1.5.1; PR.4.1; RE.7.1, RE.7.2; RE.8.1, RE.8.1; RE.8.2, R.9.1; CN.10.1, CN.11.1; CN.11.2. Musical Theatre: PR.4.1 and 2, RE.7.1 and 2, RE.7.3 and 4, RE.8.1. Theatre Appreciation: PR.4; RE.7, 8 and 9; CN.10-11. Music: RE.7 – 9, CN.10, CN.11. Social Studies: Civics: C.1.7.1; C.1.7.5; .1.7.8; Geography: G.1.5.5, G.3.5.8, G.1.6.8, History: H.3.7.6-10; H.4.8.4.

National Geographic Live: *Wild Wolves of Yellowstone*

MAY 12, 2026 | 10AM

📍 Baum Walker Hall at Walton Arts Center

Yellowstone National Park contains many stories, including one of the best case studies in wildlife conservation. Wildlife biologist and National Geographic Explorer Doug Smith led the project that reintroduced gray wolves in the 1990s. We join him on assignment in the park to see how the landscape has changed since the wolves arrived, including never-before-seen photos and videos of the quest to bring back this apex predator.

UE M JH

BEST FOR: Upper Elementary through Junior High

Arkansas Learning Standards: English Language Arts: 3.RC.13. RI; 3.RC.17.RI; 4.RC.14.RI; 4.RC.17.RI; 5.RC.14.RI; 5.RC.17.RI. Social Studies: C.1.3.9; C.1.4.9; G1.3.4; G.1.4.4; G.1.3.7; G.1.4.7; H1.3.3; H1.4.3; H.1.4.5; H.1.4.7; G.2.5.6 and 8; G.3.5.1; G.3.5.9; G.3.4.5.2; G.1.6.4; G.1.5.1; H.3.7.15; H.4.8.10; H.4.8.14. Journalism: H.2.JI.1; H.2.JI.3; MO.3.JI.4; W.5.JI.6; PH.6.JI.5; P.7.JI.1.



Wild Wolves of Yellowstone

Doug Smith

dance

The Remember Balloons

OCTOBER 2 & 3, 2025 | 9:30 & 11:30AM

📍 Baum Walker Hall at Walton Arts Center

James' Grandpa treasures his balloons, each representing cherished memories. He has balloons showing Dad when he was young and Grandma when they were married. Grandpa also has a silver balloon filled with the memory of a fishing trip he and James took together. But when Grandpa's balloons begin to float away, James is heartbroken. No matter how hard he runs, James can't catch them. One day, Grandpa lets go of the silver balloon and he doesn't even notice! Grandpa no longer has balloons of his own. But James has many more than before. It's up to him to share those balloons, one by one.

The Remember Balloons is a gentle, beautifully crafted story about what happens to the memories of a loved one affected by dementia. Based on Jessie Oliveros' book *The Remember Balloons*, this dance production breathes life into the story by bringing it to the stage!

LE UE

BEST FOR: Lower Elementary and Upper Elementary

Arkansas Learning Standards: English Language Arts: K.RC.3.RF, K.RC.8-11.RL, K.RC.13.RI, K.CC.1-2.OL, Fine Arts Theatre: RE.7.1 and 2, RE.8.1 RE.8.2, RE.9.1, CN.10.1, CN.11.1, CN.11.2. Theatre Appreciation: RE.7-9, CN.11. Dance Appreciation: RE.7-9, CN.10, Music: RE.7-9, CN.10, CN.11. Music Appreciation: RE.7-9, CN.10, CN.11. Visual Art: RE.7-9, CN.10, CN.11. Social Studies: C.1.K.2; C.1.1.2; C.1.K.4; C.1.1.5; C.1.2.5; C.1.3.5; C.1.4.5; G.1.K.5; G.1.1.5; G.1.2.5; G.1.3.5; G.1.4.5; H.1.K.1; H.1.1.1; H.1.2.1; H.1.3.1; H.1.4.1; G.3.5.4; G.3.5.9.

The Remember Balloons



Show Underwriter:
Richie & Karen Roberts

BODYTRAFFIC

MARCH 5, 2026 | 10AM

📍 Baum Walker Hall at Walton Arts Center

Movement, conceptual and physical, is humankind's only common language. BODYTRAFFIC uses multiple styles of dance - hip-hop, contemporary, ballet and modern - along with pantomime, gesture, music and sounds - to create performances that are globally appreciated and accessible. BODYTRAFFIC invites you to expand your definition of dance and storytelling through their unique and eclectic performance.

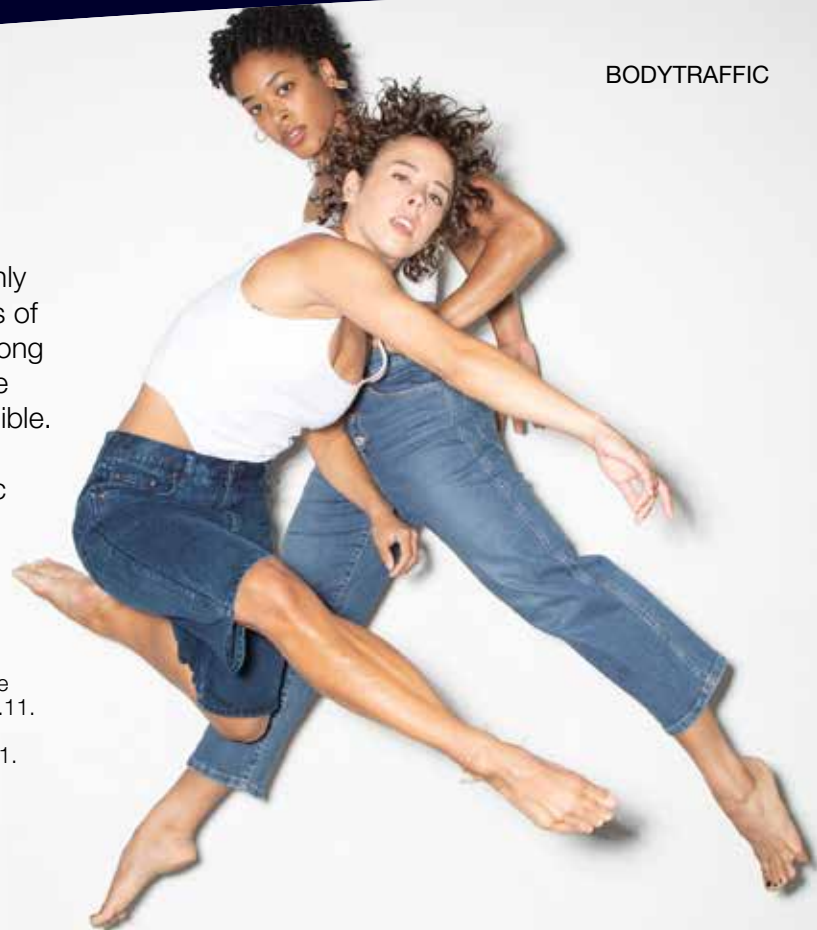
M JH HS

BEST FOR: Middle School and up

Arkansas Learning Standards: Fine Arts Theatre: CR.3.1, RE.7.1 and 2, RE.8.1 and 2, RE.9.1, RE.9.2, CN.10.1, CN.11.1 and 2. Theatre Appreciation: PR.4, RE.7-9, CN.10, CN.11. Music: RE.7-9, CN.10, CN.11. Dance: RE.7, 8 and 9, CN.10 and 11. Performance Dance: RE.7, RE.8, RE.9, CN.10, CN.11. Dance Appreciation: RE.7, 8 and 9, CN.10 and 11.

Show Underwriter: *Wendy Brant*

BODYTRAFFIC



puppetry

Maebele's Suitcase (La Maleta de Maebele)

OCTOBER 6-10, 2025 | 9:30AM & 11:30AM

➔ Starr Theatre at Walton Arts Center

Maebele lives in her treehouse and is an incredible hat maker. She's been working hard ahead of the town's annual hat contest when she befriends Binkle, a bird with a migration dilemma. He's trying to carry too much on his flight south for the winter! As Maebele generously offers her cherished suitcase from her own migration from Colombia, they delve into profound reflections on the significance of our possessions and memories. Don't miss this enchanting tale celebrating friendship, cultural heritage, and the universal lessons found within the stories of our lives.

LE

BEST FOR: Lower Elementary

Arkansas Learning Standards: Language Arts: K.RC.8-12.RL, K.RC.1-3.RF; 1.RC.1-3.RF, 1.RC.7-12.RL, 1.CC.1-3.P; 2.RC.1-3.RF, 2.RC.7-12.RL, 2.CC.1-2.OL; 3.RC.1-2.RF, 3.RC.7-8.RL, 3.CC.1-2.OL; 4.RC.1-2.RF, 4.RC.7-11.RL, 4.CC.1-2.OL, World Languages: CLT.1.1-2, CLT.2.1, CNN.2.1, CMP.1.1, CMN.1.1 Fine Arts Theatre: RE.7.1 and 2, RE.8.1 RE.8.2, RE.9.1, CN.10.1, CN.11.1, CN.11.2. Musical Theatre: RE.7.1, RE.7.3, RE.7.4, RE.8. Theatre Appreciation: RE.7-9, CN.11. Music: RE.7-9, CN.10, CN.11. Music Appreciation: RE.7-9, CN.10, CN.11. Visual Art: RE.7-9, CN.10, CN.11.



Billy Goats Gruff
and Other Tales



Maebele's Suitcase
Show Underwriter:
Carol & Jason Vella



Dinosaur World
Live

Mermaid Theatre of Nova Scotia: Billy Goats Gruff and Other Tales

MARCH 31-APRIL 2, 2026 | 9:30 & 11:30AM

➔ Baum Walker Hall at Walton Arts Center

Mermaid Theatre of Nova Scotia's newest production, *Billy Goats Gruff and Other Tales*, presents a fresh and engaging reimagining of three cherished children's stories: *Goldilocks and the Three Bears*, *The Three Little Pigs* and *The Three Billy Goats Gruff*. This imaginative retelling seamlessly interweaves three classic tales into a heartwarming adventure that celebrates friendship and courage.

LE

BEST FOR: Lower Elementary

Arkansas Learning Standards: English Language Arts: K.RC.3.RF, K.RC.8-11.RL, K.RC.13.RI, K.CC.1-2.OL, K.CC.3.P; K.CC.5.P, 1.RC.1-3.RF, 1.RC.7-12.RL, 1.CC.1-3.P; 2.RC.1-3.RF, 2.RC.7-12.RL, 2.CC.1-2.OL, 2.CC.3.P, 2.CC.5.P; 3.RC.1-2.RF, 3.RC.7-8.RL, 3.CC.1-2.OL, 3.CC.3.P; 3.CC.5.P Fine Arts Standards Theatre: RE.7.1 and 2, RE.8.1 and 2, RE.9.1, RE.9.2, CN.10.1, CN.11.1 and 2. Musical Theatre: RE.7.1, RE.7.3, RE.7.4, RE.8. Theatre Appreciation: PR.4, RE.7, 8 and 9, CN.10 and 11. Music: RE.7, 8 and 9, CN.10, CN.11.

Show Underwriter: Brock & Natalie McKeel

Dinosaur World Live

APRIL 29, 2026 | 10AM

➔ Baum Walker Hall at Walton Arts Center

Miranda lives on the island of Mundo de Los Lagartos Terribles ("World of the Terrible Lizards"). She was shipwrecked there as a baby, along with her parents and a team of paleontologists. The island was full of dinosaurs, so Miranda grew up with all kinds of dinos and now she's going to show you around the island and introduce you to some of her dino friends! Students will learn what different dinosaurs eat, how they live, where they are found and a whole lot more.

LE UE M

BEST FOR: Lower Elementary through Middle School

Arkansas Learning Standards: Fine Arts Theatre: CR.1.3, CR.2.2, CR.3.1, PR.4.1, PR.4.2, PR.5.3, RE.7.1 and 2, RE.8.1 and 2, RE.9.1, RE.9.2, CN.10.1, CN.11.1 and 2. Theatre Appreciation: PR.4, RE.7-9, CN.10, CN.11. Music: RE.7-9, CN.10, CN.11. Dance: CR.1, PR.5 and 6, RE.7, 8 and 9, CN.10 and 11. Performance Dance: RE.7, RE.8, RE.9, CN.10, CN.11. Science: K-LS1, K-ESS2-3, 1-LS1-3, 2-LS2.A-C, 3-LS1, SL1.5. Visual Art: PR.4,5 and 6, RE.7 and 8.

music



Symphony of
Northwest Arkansas

Symphony of Northwest Arkansas (SoNA)

SEPTEMBER 19, 2025 | 10AM

OCTOBER 31, 2025 | 10AM

📍 Baum Walker Hall at Walton Arts Center

Through its education outreach concerts, SoNA provides students in Northwest Arkansas the opportunity to experience live performances by a professional symphony orchestra. These concerts are thoughtfully designed for young audiences, featuring accessible music, relatable themes, and meaningful insights into the live concert experience.

M JH HS

BEST FOR: Middle School and up

Arkansas Learning Standards: Fine Arts Music: PR.4, RE.7, 8 and 9, CN.10 and 11. Music Appreciation: CR.2, PR.6, RE.7, 8 and 9, CN.10 and 11. Theatre: CR.3.1, PR.4.1, RE.7.1 and 2, RE.8.1 and 2, RE.9.1, CN.10.1, CN.11.1 and 2. Theatre Appreciation: PR.4, RE.7, 8 and 9, CN.10 and 11.

Skerryvore

SEPTEMBER 23, 2025 | 10AM

📍 Baum Walker Hall at Walton Arts Center

Skerryvore is a Scottish Celtic rock band currently based in Glasgow, Scotland. With a mix of bagpipes, fiddles, accordions and whistles, alongside guitar and vocals, underpinned by driving bass, drums and keys, Skerryvore represents the best in contemporary Scottish traditional music. Their seven studio albums demonstrate the wide range of influences the individual musicians bring to the mix – a unique fusion of folk, traditional, pop and rock.

JH HS

BEST FOR: Junior High and up

Arkansas Learning Standards: Fine Arts Music: PR.4, RE.7, 8 and 9, CN.10 and 11. Vocal Ensemble: RE.7, 8 and 9, CN.10 and 11. Instrumental Ensemble: RE.7, 8 and 9, CN.10 and 11. Music Appreciation: PR.4, RE.7, 8 and 9, CN.10 and 11. Music Technology: RE.7 and 8. Theatre Appreciation: PR.4, RE.7-9, CN.10, CN.11.



Soweto Gospel
Choir

Soweto Gospel Choir

NOVEMBER 17, 2025 | 10AM

📍 Baum Walker Hall at Walton Arts Center

Since its inception in 2002, Soweto Gospel Choir has set the standard for the powerful sounds of African gospel, freedom songs and international classics. The choir hails from Nelson Mandela's hometown and is comprised of some of South Africa's best vocalists. They have collaborated with the biggest names in contemporary music including Aretha Franklin, Stevie Wonder, U2 and Beyoncé. They will present a secular program for the students of Northwest Arkansas.

JH HS

BEST FOR: Junior High and up

Arkansas Learning Standards: Fine Arts Music: PR.4; RE.7; RE.8; CN.10; CN.11; Vocal Ensemble: PR.4.2; RE.7; RE.8; CN.10; CN.11. Music Appreciation: CR.2, PR.6, RE.7-9, CN.10-11. Fine Arts Theatre: CR.3.1, PR.4.1, RE.7.1 and 2, RE.8.1 and 2, RE.9.1, CN.10.1, CN.11.1 and 2. Theatre Appreciation: PR.4, RE.7-9, CN.10, CN.11.

Skerryvore



The Fabulous Equinox Orchestra



The Fabulous Equinox Orchestra

DECEMBER 18, 2025 | 10AM

📍 Baum Walker Hall at Walton Arts Center

The Fabulous Equinox Orchestra presents a festive show featuring the incomparable voice of Clay Johnson backed by the jubilant sounds of the big band. This joyful production brings to life classic songs with a delightful mix of jovial humor and heartwarming nostalgia. This promises to be filled with musical magic and cheer.

UE M JH HS

BEST FOR: Upper Elementary and up

Arkansas Learning Standards: Fine Arts Music: PR.4, RE.7, 8 and 9, CN.10 and 11. Vocal Ensemble: RE.7, 8 and 9, CN.10 and 11. Instrumental Ensemble: RE.7, 8 and 9, CN.10 and 11. Music Appreciation: PR.4, RE.7, 8 and 9, CN.10 and 11. Music Technology: RE.7 and 8. Theatre Appreciation: PR.4, RE.7-9, CN.10, CN11.

Show Underwriters:

Ed & Carol Clifford, Paula Jenkins & Lee Brown



Voctave

Voctave

APRIL 10, 2026 | 10AM

📍 Baum Walker Hall at Walton Arts Center

Voctave is a dynamic 11-member a cappella group hailing from central Florida, renowned for their intricate, captivating vocal arrangements, and rich tapestry of musical backgrounds. The group's members have performed globally and contributed to numerous recordings, showcasing their versatile talent and vocal artistry. With over 200 million views across social media platforms, Voctave's impact on the a cappella scene is undeniable.

JH HS

BEST FOR: Junior High and up

Arkansas Learning Standards: Fine Arts Music: PR.4, RE.7, 8 and 9, CN.10 and 11. Vocal Ensemble: RE.7, 8 and 9, CN.10 and 11. Music Appreciation: CR.2, PR.6, RE.7, 8 and 9, CN.10 and 11. Theatre: CR.3.1, PR.4.1, RE.7.1 and 2, RE.8.1 and 2, RE.9.1, CN.10.1, CN.11.1 and 2. Theatre Appreciation: PR.4, RE.7, 8 and 9, CN.10 and 11.

Link Up: *The Orchestra Swings*

MAY 7, 2026 | 9:30 & 11:30AM

📍 Baum Walker Hall at Walton Arts Center

The Arkansas Philharmonic Orchestra teams up with Carnegie Hall's internationally recognized Link Up to bring students into the exciting world of the orchestra through *The Orchestra Swings*. "Swing" is many things. It's a distinctive rhythmic feel; a musical era dominated by big band jazz; and that elusive but unmistakable feeling that results when musicians are deeply tuned into each other and playing in sync. Through the Link Up repertoire, hands-on activities, and a culminating interactive performance with an orchestra and jazz ensemble, we will explore the elements that contribute to that magical moment when musicians start to swing.

UE

BEST FOR: Upper Elementary

Arkansas Learning Standards: Fine Arts Music: PR.4, RE.7, 8 and 9, CN.10 and 11. Vocal Ensemble: RE.7, 8 and 9, CN.10 and 11. Instrumental Ensemble: RE.7, 8 and 9, CN.10 and 11. Music Appreciation: PR.4, RE.7, 8 and 9, CN.10 and 11. Music Technology: RE.7 and 8. Theatre Appreciation: PR.4, RE.7-9, CN.10, CN11.



Backstage Tours

SEPTEMBER 16, 2025

THURSDAY, MARCH 12, 2026

This year, we are excited to offer two dedicated days for school groups to explore the behind-the-scenes world of Walton Arts Center! During this 60-minute experience, members of the Learning & Engagement team will guide students on a tour that highlights the history of Walton Arts Center, its two unique theaters, and its strong connections with community members and partner organizations. The tour concludes with an interactive session on the Baum Walker Hall stage, where students will learn about sound, lighting, scenery and special effects through live demonstrations led by our professional production team.

UE M JH HS


BEST FOR: Upper Elementary and up

Arkansas Learning Standards: Fine Arts Theatre: CR.2.2; PR.5.1; PR.5.3; RE.7.1; RE.7.2; R.9.1; Theatre I-IV: CR.1.2; CR.2.3; PR.5.3; RE.7.3; RE.7.4; RE.7.5; RE.9.1; CN.10.2; CN.11.1; CN.11.2; CN.11.5. Theatre Appreciation: PR.4; RE.7, 8 and 9; CN.10-11.



Broadway Bridges

Broadway Bridges at Walton Arts Center gives high school student groups in Northwest Arkansas access to discounted tickets for select Broadway shows. Part of a wider initiative by the Broadway League and piloted across the country during the 2024-2025 season, Broadway Bridges on the Road expands access to Broadway touring performances for high school students nationwide. The program enriches students' arts education, promotes cultural equity, and cultivates a diverse future audience for live theatre. Broadway Bridges started in 2017 in New York and, since its inception, more than 146,000 NYC public school sophomores and their chaperones have attended a show on Broadway. Building on the success of the New York City counterpart and collaborating with touring productions, Broadway Bridges at Walton Arts Center provides discounted tickets for groups of 9th through 12th graders to see Equity productions at Walton Arts Center. Eligible shows for the 2025-2026 school year have not yet been confirmed. Interested theater instructors can email **schools@waltonartscenter.org** to be placed on the list to receive information as soon as it is available.



**From your high
school musical to the...**

DIAMOND AWARDS

The Diamond Awards is the region's premier high school musical theatre awards program and a proud participant in the National High School Musical Theatre Awards®, also known as the Jimmy Awards®. Modeled after Broadway's Tony Awards®, the program celebrates excellence in both individual and ensemble performances across multiple categories.

Student performances are evaluated by industry professionals. The Best Actress and Best Actor winners will advance to New York City to compete with peers from over 50 regional programs at the Broadway League Foundation's National High School Musical Theatre Awards®.

We are proud to shine a spotlight on Arkansas' talented students. High school theatre programs interested in participating must register with Walton Arts Center. Registration opens in August 2025.

Ceremony Underwriters:

Seth Valley & Luke Bridges, Margaret & Dick Rutherford



**SCAN for
more info**

...to the



National High School
Musical Theatre Awards





APRIL 10 & 11, 2026

📍 Walton Arts Center

The 11th annual VoiceJam a cappella festival brings together voices from all over the world. Whether you compete, learn, watch or listen, there's something for everyone. **Wondering what there is for students and teachers?**

- + Student field trip to see the professional a cappella group, Voctave
- + Submit your student a cappella group to compete in the VoiceJam Competition. All levels are welcome!
- + Sing. Yes, you can sing and perform on stage too! If you want to join a group, sing with WACappella, Walton Arts Center's own vocal group.
- + Earn Professional Development hours.

Find more information at VoiceJamFestival.org or email voicejam@waltonartscenter.org



BEST FOR: Middle School and up

Arkansas Learning Standards: Fine Arts Standards Vocal Music: P.4.BVMIV.3; P.4.BVMIII.5; P.6.BVMI.3; R.9.BVMIII.1; CN.10.BVMI.1; CN.11.BVMI.2; CN.11.BVMI.3. Music Appreciation: P.4.MA.1; P.5.MA.1; P.6.MA.2; R.7.MA.3; R.9.MA.1. Fine Arts Music: PR.4, RE.7-9, CN.10, CN.11. Vocal Ensemble: RE.7-9, CN.10-11. Music Appreciation: CR.2, PR.6, RE.7-9, CN.10-11. Theatre: CR.3.1, PR.4.1, RE.7.1-2, RE.8.1-2, RE.9.1, CN.10.1, CN.11.1-2. Theatre Appreciation: PR.4, RE.7-9, CN.10, CN.11. Dance: RE.7-9, CN.10-11.

Show Underwriter:

Jason P. Viator

Show Sponsors:



ARTS INTEGRATION

Professional Development

Time at school should be rich and rewarding. When children's imaginations and humanity are engaged in learning, the classroom is where they want to be. Walton Arts Center has been training teachers to incorporate the arts into their curriculum and improve learning outcomes for 34 years. Arts integration training for teachers transforms how they instruct as well as how students learn, what students remember and ultimately what they know. Walton Arts Center is proud to play a role in strengthening our schools and supporting our teachers to make the classroom a dynamic arts-filled place that nurtures a child's imagination and academic skill.

SmART Residency

The SmART Residency is a year-long professional development residency supporting and encouraging teachers to integrate their arts in different ways within the curriculum, helping students develop literacy skills and strengthening their ability to collaborate. Walton Arts Center's 2025-26 SmART Residency will provide teachers with 25 contact hours of arts integration instruction. Live performances at Walton Arts Center and arts integration role modeling in 19 classrooms will impact 500 elementary school students. Activities train grade-level teaching teams to understand, value, use, and increase the frequency of arts integration instruction and support student achievement while creating a collaborative classroom culture through arts integration.



Hip-Hop Knowledge Drop

SPRING 2026

Last year, Walton Arts Center launched Hip-Hop 101, a program that brings professional teaching artists into schools to teach the core elements of hip-hop through no-cost after-school programs.

This year, we're expanding the program by offering one-day in-school residencies for 3rd grade classrooms across Northwest Arkansas – also at no cost to schools.

Each Hip-Hop Knowledge Drop residency includes a professional teaching artist and members of the High School ALLPS Crew, who will lead students through three dynamic sessions:

- + Writing & Rapping Lyrics – in English Language Arts or music class
- + Breaking – hip-hop dance in PE or gym class
- + Graffiti – stylized lettering in visual art class

Reserve your FREE Spring 2026 Hip-Hop Knowledge Drop residency today!

UE

BEST FOR: Upper Elementary

Arkansas Learning Standards: Fine Arts Theatre: CR.3.1, PR.4.1, RE.7.1 and 2, RE.8.1 and 2, RE.9.1, CN.10.1, CN.11.1 and 2. Theatre I-IV: CR.1.2; CR.2.3; PR.5.3; RE.7.2-5; RE.8.1; CN.10.1; CN.11.1 - 4. Theatre Appreciation: PR.4, RE.7-9, CN.10, CN.11. Music Appreciation: CR.2, PR.6, RE.7-9, CN.10-11. African American History: H.5.AAH.1 and 8, H.5.AAH.10; JU.7.AAH.1-3.

HIP-HOP 101

Stage to Studio

Stage to Studio is a collaborative program between Walton Arts Center and our resident fine arts partner, Community Creative Center (CCC). This program enhances the Classroom Series experience by offering students the opportunity to explore performance themes and related learning standards through hands-on visual arts activities led by CCC teaching artists.

Community Creative Center, based in the Nadine Baum Studios on Walton Arts Center's Fayetteville campus, specializes in studio arts education. Past Stage to Studio workshops have included puppet making, clay hand-building, and wearable art projects. Participating schools receive Classroom Series performance tickets, a workshop, lunch and bus transportation – all at no cost. The program is open to public school groups of up to 60 students in grades K–6.

LE UE M

BEST FOR: Lower Elementary through Middle School

Arkansas Learning Standards: Fine Arts Theatre: PR.5.3; RE.7.1-2; RE.8.1; RE.8.2; RE.9.1; RE.9.2. Fine Arts Visual Art: CR.1-3; PR.5; RE.7-9; CN.10-11.



COMMUNITY CREATIVE CENTER
at Walton Arts Center's Nadine Baum Studios

Walton Arts Center 2025/26 Arts Education programming is **generously supported by:**



Friends of Walton Arts Center

Friends help Walton Arts Center share the transformative experience of the arts with tens of thousands of students, educators and community members each year. Help light the way for access to the arts for all by becoming a *Friend*. Visit waltonartscenter.org/friends to learn more!

Education Supporters:

Crystal Bridges Museum of American Art
Northwest Arkansas Education Service Cooperative
The John F. Kennedy Center for the Performing Arts
UA Center for Children & Youth