



# Tailor-made solutions

Communication & security





**about us**

**our values**

**global presence**

**video intercom**

**home automation**

**access control**

**CCTV**

**fire and intrusion detection**

**PA system, EVAC and area of refuge**

**intercom for hospitals**



## **The security that only a leader can offer**

Golmar is a Spanish company founded in 1954, with a presence in most international markets. Recognised as a market leader in the development of video door entry systems and in the supply of integrated electronic security solutions, it has a wide range of products to meet the needs of the residential and tertiary sectors.

**+70**  
years

offering communication  
and security solutions

**55**  
countries

a global presence in  
continuous expansion, offering  
solutions adapted to the  
needs of each market

**172**  
people

working as one teamwork, to  
develop the most advanced  
systems and offer an excellent  
service



1954

Golmar was founded in Barcelona as a family business, and its first product was an intercom for offices. Four years later Golmar presents a communication equipment for apartments.

1978

The Domino telephone wins multiple design awards. Market launch of the first video door entry system. Opening of branches in the most important cities in Spain.

1994

First Spanish company to develop a digital video door entry system, a clear demonstration of their high degree of innovation. Three years later, Golmar moved to a modern 6.500m<sup>2</sup> building.

2001

Obtained ISO 9000:2000 certification. In 2004, celebrating Golmar's 50th anniversary, it increases their international presence with the creation of two European subsidiaries.

## a company in constant growth

2015

Thanks to the application of the latest technologies, Golmar has developed 2-wire video door entry systems, which make it possible to provide video to existing audio installations, and an innovative IP system with countless features.

2017

Integration of home automation systems and applications for smartphones that allow the management of the video door entry system and access control, among other systems.

2024

Golmar is preparing for the introduction of new developments to match its 70th anniversary, at a time when systems integration and connectivity is increasingly in demand.

# our values

One of our main goals is to identify the needs of each project, offering the solutions that best suit the requirements, with special attention to **design, performance and efficiency.**

## Solutions and services

We are proud of our exceptional customer service, which provides end-to-end support at every stage of the project, from pre-sales enquiries to assistance during and after installation.

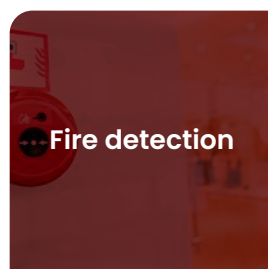
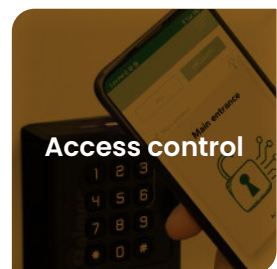
Our expert and committed team of professionals is always ready to respond to any enquiry, offering quality guidance.

## Our customers

Our customers are our most valuable asset, and their satisfaction is the key to our success. We focus on the needs of the different groups involved in the business, with an emphasis on the end-user experience.

Our commercial and prescription departments support:

- Architecture offices
- Engineering and consulting
- Interior designers
- Real estate developers
- Construction companies
- Installers





**we take care of your home**

**100%  
committed  
to the future  
generations**



At Golmar we are constantly seeking to improve and progress, to achieve excellence. An example of this is our responsibility to care for the environment; we have started a process of changing the packaging of all our products, using recyclable carton, vegetable-based inks and reducing the use of plastics as much as possible.

**Our leitmotiv**

From now on, every package of our products will carry a clear and universal message: "we take care of your home", to give voice to our commitment to create sustainable homes and a healthy future.

**Universal design**

Golmar develops products to suit everyone's needs. Accessibility and inclusion, especially for people with vision, hearing and mobility impairments, are prerequisites for our designs and an important part of our values.

The integration of inductive loop amplifiers for the hearing impaired, system status messages in different languages or cameras with extended viewing angles are some of the innovations incorporated in our equipment to welcome everyone.





**Our creative and functional solutions, which integrate communication and building security,** have enabled the successful execution of prestigious projects all over the world with our seal of guarantee.



**EMAAR StandPoint**  
Downtown Dubai, Dubai



**Colombo City Centre**  
Colombo, Sri Lanka



**Urban Treasure**  
Jalan Eunos, Singapore



**The Kube**  
Tarragona, Spain

**KRONOS**  
HOMES



**Pabellón Príncipe Felipe**  
Zaragoza, Spain



**Las Condes 7520**  
Santiago, Chile



**Avantra**  
Sydney, Australia



**Ikon**  
Valencia, Spain

**KRONOS**  
HOMES



**Axel Towers**  
Copenhagen, Denmark



**One Hill**  
Casablanca, Morocco



**Bloom Towers**  
Jumeirah Village, Dubai



**Mall of Dilmunia**  
Dilmunia Island, Bahrain

# video intercom

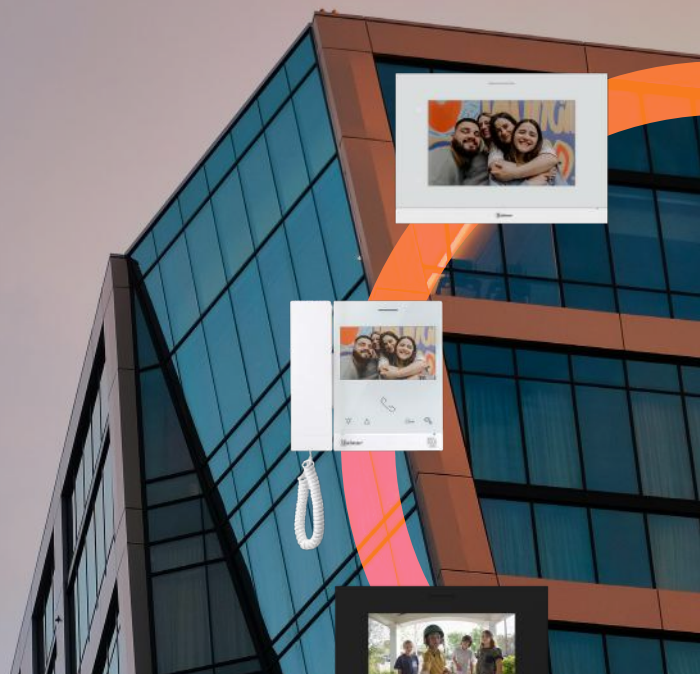
Connecting  
the present  
**to open  
the future**

Since the beginning of its history, Golmar has focused on developing solutions for residential communication. The extensive range of security products, headed by video door entry systems, are the perfect answer to the accessibility and security demands of the most avant-garde buildings.

- » Analogue technology for lower budgets, 2-wire non-polarised for new and rehabilitation projects, and IP that maximises performance and facilitates integration with other systems.
- » Wide range of ready-to-use kits for single-family houses and small buildings.
- » Compact and modular door panels, with pushbuttons, keypad or touchscreen, that allow you to achieve any project.
- » An extensive range of finishes: aluminium, stainless steel or brass, with high weather and vandal protection ratings.



# User experience defines our products



Every environment has unique security requirements. Our solutions are designed to adapt to any existing infrastructure, facilitating installation and integration processes.

The ability to customise our products to meet specific needs guarantees our customers an adequate response to their security and communication needs.



4.3" or 7" TFT LCD screens



Hands-free or handset communication



Amplifier for hearing aids



Wi-Fi monitors with call forwarding to mobile phones



Intercom between apartments



Image memory



Integration with other systems



**G2CALL+**  
**stay connected**



A powerful application that allows you to answer video door entry calls from anywhere, as if it was your home monitor.

With G2Call+ it is possible to control several devices with G2+ and IP G+ technologies in a simple way and under the same application: the main entrance door, the garage door, the beach house,... And share them with others by simply sending a QR code.



Audio and video communication



Door opening



Alarm reception



CCTV integration



Snapshots and recordings



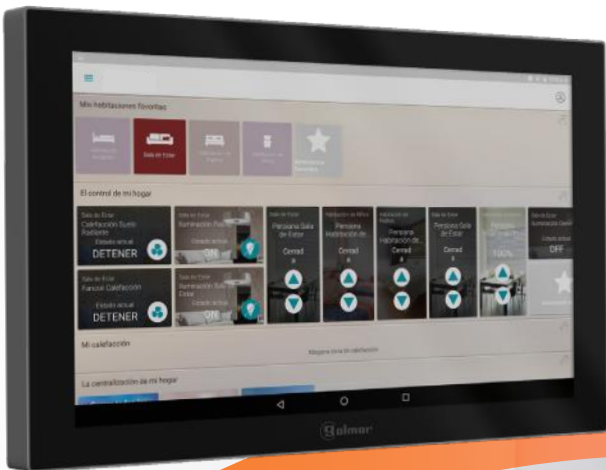
Multiscreen recordings

# home automation



## Smart homes for everyone

Home automation increases comfort and empowers energy saving to our houses. Golmar is committed to those values, offering an extensive range of integration possibilities ready to implement.





**A wide range of autonomous wired detectors in combination with IP monitors, extend the options and integrations of Home Automation solutions.**



**The Edge video intercom monitor, with IP G+ technology and Android 12.0 platform, has been specifically designed to allow the integration with other home automation solution providers through the use of their Android control applications.**



# C access control

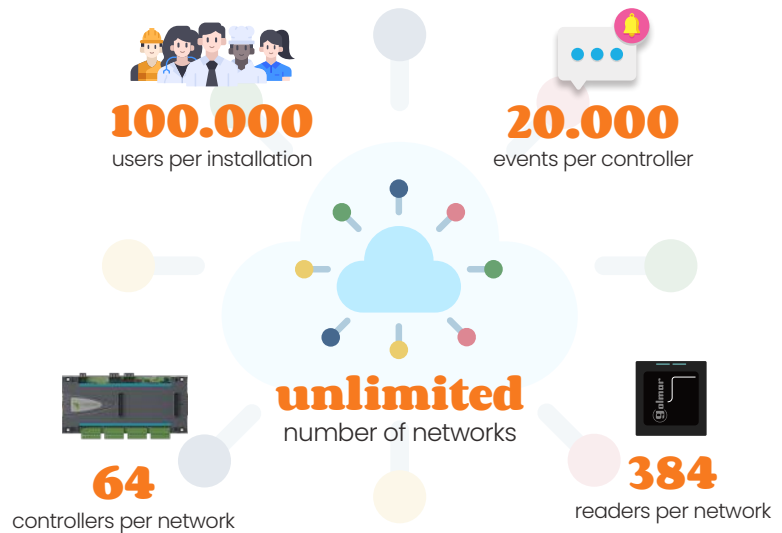


The essential add-on to **video intercom**

At Golmar we understand the importance of confidentiality. The security of communications and data is guaranteed, thanks to the use of the latest encryption technologies and storage in a proprietary cloud.

**iP-Opener is a networked IP access control system.**

Thanks to its power and modularity, it allows the creation of installations of any size.



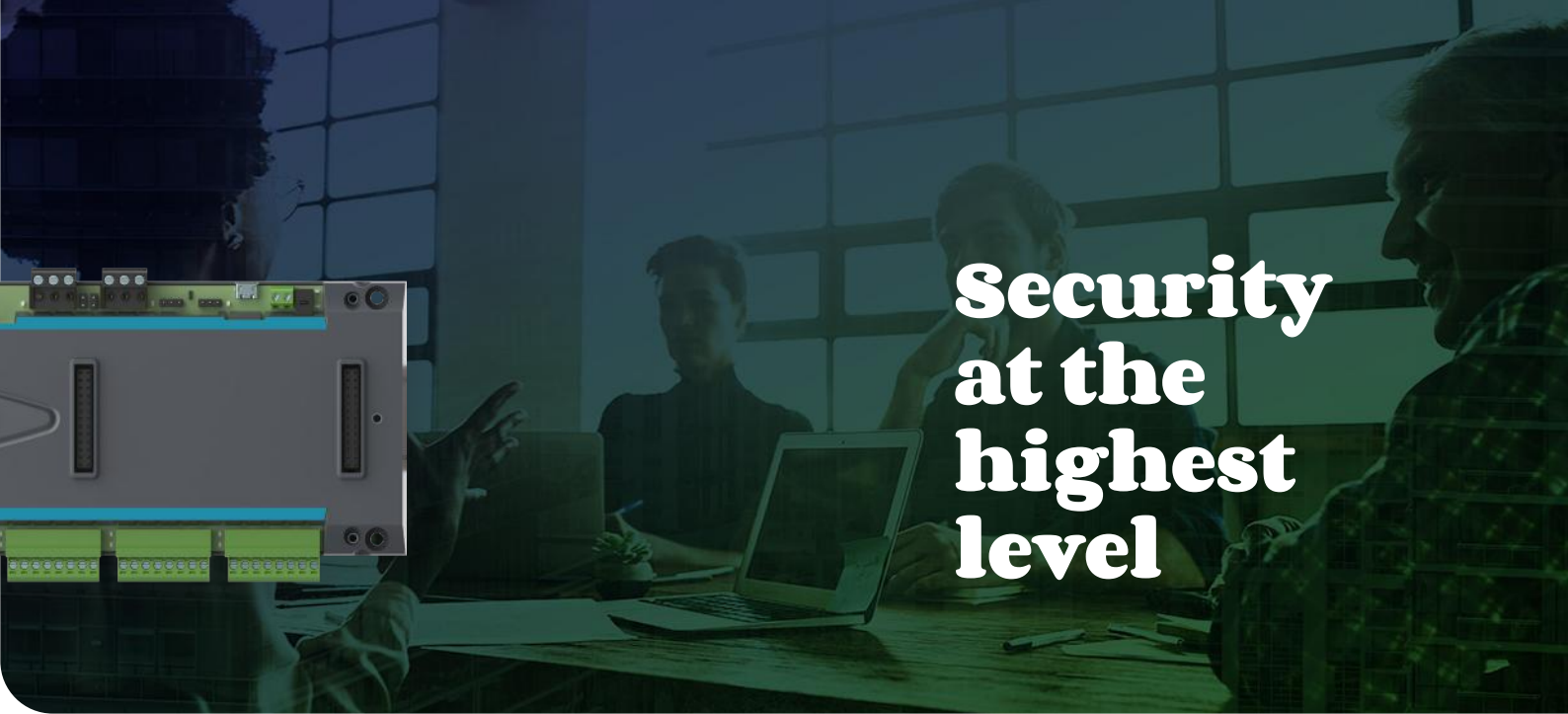
## Designation of origin: **European technology and manufacturing**

With 70 years of experience behind it, Golmar is the best guarantee for the protection of your accesses. A wide range of readers with an innovative design and adaptable to any environment complete the iP-Opener system.



The iP-Opener Manager portal allows you to create routines and customise the system on demand, all in a simple way thanks to its intuitive interface.





# Security at the highest level

## 2safe

The communication protocol with 2SAFE technology increases the security level of our access controls to unexpected levels. With only two wires, power supply and data communication are transmitted simultaneously and encrypted, making it impossible to decode the transmissions.

### 2SAFE supports AES (Advanced Encryption Standard)

2SAFE readers integrate 13,56 Mhz Mifare Plus technology and Bluetooth (BLE). The latest technology allows mobile phones to be used as access credentials for opening doors.





# CCTV

## Security from a professional point of view

Golmar has a range of Golmar CCTV products to cover all surveillance needs. From kits for single-family homes, small retail shops and business to larger solutions such as hotels, residential complexes or shopping centres.

An extensive range of products for all budgets, with the best quality and features, and always at the forefront of technology such as video analysis for people counting or facial recognition.

Thanks to the application programming interfaces (API) and the ONVIF as well RTSP protocols, integration with IP video door entry systems and access control is possible.



Residential



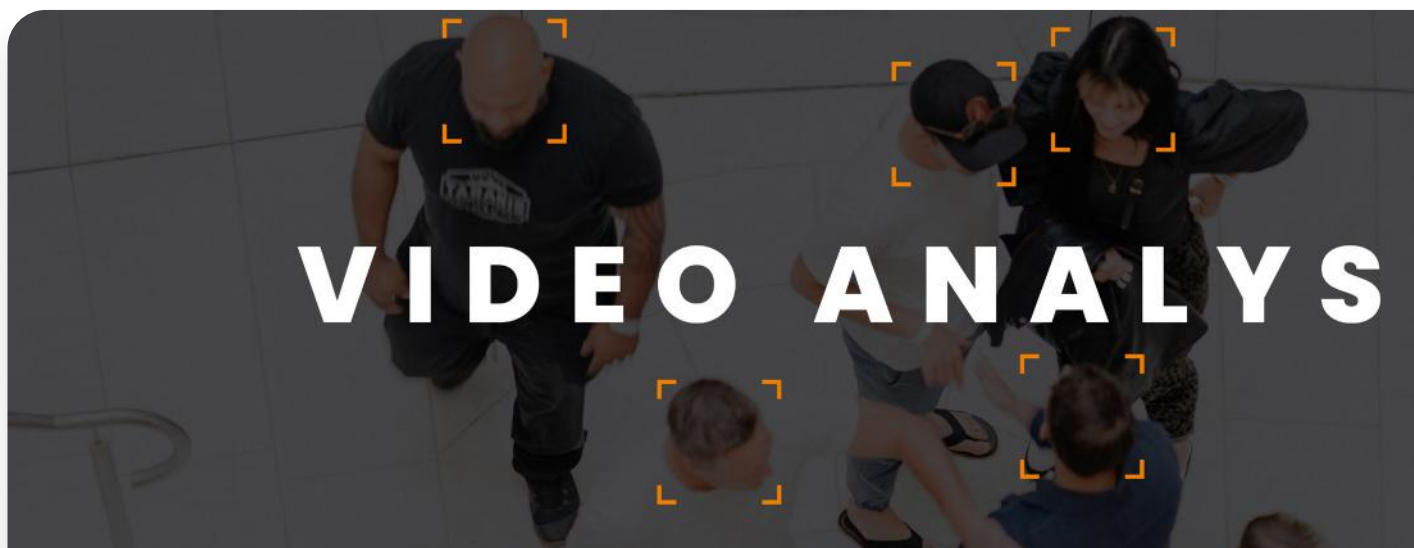
Retail



Hotel



Office



# Surveillance from the best angle

## All your CCTV in only one place

The key to efficient management

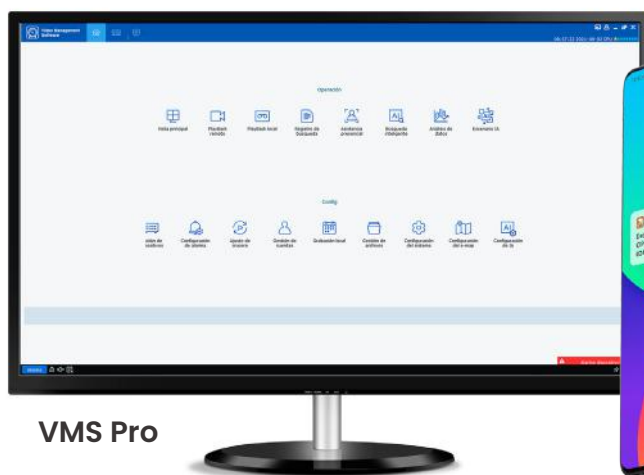
Golmar surveillance solutions integrate seamlessly with professional desktop applications such as VMS Pro, as well as the GolmarView app for mobile devices. Unique environments with no specific training needs for operators.

Easy use and installation

Video analysis

Scalable

High resolution



VMS Pro



GolmarView app

# fire and intrusion

**Immediate  
action**  
against fire  
and intruders

Golmar detection solutions are designed to protect the most precious things. By applying the highest quality standards, these systems are ready to operate 24/7 with minimal false alarm incidents.

## Fire detection

From the most basic equipment, such as autonomous smoke and gas detectors, to the most powerful ones, such as carbon monoxide detection units and conventional fire detection units, Golmar provides solutions for all types of projects. A wide selection of optical and thermal detectors, combined with multiple accessories such as sirens and reset buttons, complete this range of products.



## Intrusion alarms

An extensive range of intrusion detection products, available in radio and wired technologies.

**The new GolmarSafe home equipment provides exceptional radio coverage**, and the easy programming of devices via QR code makes it a security system suitable for all types of users and professionals. The GolmarSafe mobile app allows you to monitor and protect your home from anywhere.





# PA system, EVAC and area of refuge

**Protection  
in high voice**  
against any  
event

Since the late 1970s, Golmar has been representing leading manufacturers in the acoustic diffusion market. Our experienced team of engineers advises on the conception, design and execution of projects, from the simplest to the most complex, based on technical and operational requirements and ensuring effective communication in any environment.

## **Public address system**

Communication is the base of our portfolio of solutions. In the tertiary field, window intercom systems from Golmar have provided increased security. Experience the best audio performance, specially on those environments where the safety distance and the security of a protection glass is necessary. Perfect for installations such as police stations, ticketing points, nursery and intensive care areas. Window intercom systems from Golmar became a flagship in our portfolio of tertiary communication solutions, being present in projects over the 5 continents.



## **Evacuation system**

Voice evacuation systems are an indispensable element in crowded premises. Guiding and coordinating the exit via pre-recorded or live voice messages helps people to leave the building in the safest and most orderly way possible. Simple programming allows the message to be played in one or more zones simultaneously, depending on where the alarm has occurred. In addition, these systems can be used to broadcast music in normal conditions, giving priority to evacuation and warning messages in emergency conditions. All this makes them indispensable systems for shopping centres, schools, leisure facilities, offices, hotels, hospitals, airports, train stations, etc. The equipment used must comply with the following standards EN 54-4, 54-16 and 54-24.

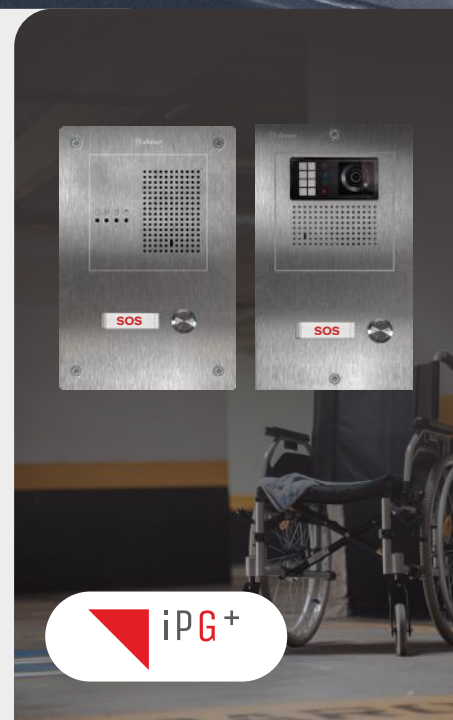
# An environment to feel safe



## Areas of refuge are spaces designed to protect people during emergencies.

It is essential that refuge areas have a two-way communication system that allows occupants to communicate directly with emergency staff or the control centre. Combination with CCTV equipment facilitates the transmission of crucial information about the status of the occupants and the situation in the refuge area.

Golmar communication devices are easy to use, even for people with little or no previous experience. Clear instructions and an intuitive interface ensure that anyone can operate the system in an emergency situation. The system must be accessible to all people.



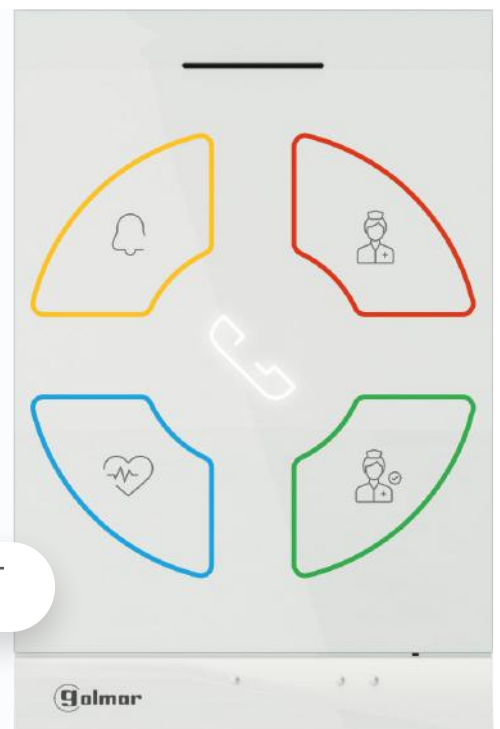
# C intercom for hospitals

**Essential communication**  
improving healthcare

Golmar has always been present in the healthcare sector, offering specialised solutions to cover the communication needs in hospitals, care centres, ... Thanks to its knowledge and extensive experience in the application of IP technology in the residential and tertiary sectors, Golmar has developed an advanced patient-nurse communication system that can be integrated with other IP devices, such as CCTV cameras and intercoms in refuge areas.

## Hospitals and residences

The control centre allows audio and video communication with the rest of the units in the system. The graphic interface, developed by professionals in the sector, provides all the necessary information on the system's communications. The use of a proven technology for communication in IP networks, assures the most vanguard and reliable solution. For its part, the patient unit with hands-free communication has intuitive buttons for easy use: call to the control centre, nurse presence, code blue, ...



# Technological advances in caring for people

## Assistance call for accessible toilets

To comply with European regulations in accessibility, Golmar has developed a reliable and easy-to-use equipment that allows users to request assistance, activating a light and acoustic signal in the areas of frequented passage. The equipment has a battery that allows operation for 36 hours without power. A central optional control allows you to manage up to eight bathrooms, with indication of the bathroom requesting assistance.





Silici, 13  
08940 Cornellá de Llobregat  
Barcelona, Spain

[www.golmar.es](http://www.golmar.es)