

# Rachael's Maids

LOOKBOOK

INTRODUCING THE  
ELIANNA  
COLLECTION

FEATURING THE  
ARIELLA  
COLLECTION

EXQUISITE  
BRIDAL  
DETACHABLE  
CHAINS



# Content Page

Introduction	03
--------------	----

THE ELIANNA COLLECTION	04
------------------------	----

Lizzy & Trisha	05
----------------	----

Ariella & Elianna	06
-------------------	----

Sayo	07
------	----

Leah & Zara	08
-------------	----

Emelia	09
--------	----

Phoebe & Lola	10
---------------	----

Rhoda	11
-------	----

Priya	12
-------	----

Lara & Clara	14
--------------	----

Stella	15
--------	----

Mags & Seun	16
-------------	----

Teri	17
------	----

Laila	18
-------	----

Nina	19
------	----

Katerina & Carolina	20
---------------------	----

Olivia	21
--------	----

Alison & Sonya	22
----------------	----

Taja	23
------	----

Shauna	24
--------	----

THE ARIELLA COLLECTION	26
------------------------	----

Beatrice & Miriam	27
-------------------	----

Alice & Patricia	28
------------------	----

Yinka	29
-------	----

Suzy	30
------	----

Tanya	31
-------	----

Tolu	32
------	----

Tracy	33
-------	----

Tracy II	34
----------	----

Jamimah	35
---------	----

Winny	37
-------	----

Vicky	38
-------	----

Isabelle & Abigail	39
--------------------	----

Sandra	40
--------	----

Amy & Ella	41
------------	----

Johanna & Gabby	42
-----------------	----

Cella	43
-------	----

Pricilla	44
----------	----

## TESTIMONIALS

Customer Reviews	45
------------------	----

## PARTNER WITH US & GET IN TOUCH

Custom Orders	46
---------------	----

Fitting	46
---------	----

Partner with Rachael's Maids	47
------------------------------	----

Other Collections	48
-------------------	----

Special thanks	49
----------------	----

Contact Information	50
---------------------	----

# Introduction

At Rachael's Maids, we understand the importance of bridal moments. The way a simple detail can capture a memory, a feeling, a forever. Every bride dream of that "one more thing" to complete her look, the piece that ties it all together with grace and meaning.

This is the heart of our chain collection, delicate back chains and arm chains, lovingly handmade to reflect timeless beauty. Whether you're a modern bride or honouring tradition, our pieces are crafted to be your perfect finishing touch.

Let this lookbook inspire you to fall in love all over again with your look, your story, and the moment that awaits.

*Versatility*  
*Individuality*  
*Glamour*





# The Elianna Collection

The Elianna Collection is a captivating new line of bridal chain accessories designed to redefine elegance and elevate every bride's cherished gown. Born from a vision to make an unforgettable statement, each piece in the Elianna Collection is meticulously crafted to enhance the inherent beauty of your wedding dress, weaving a touch of exquisite sparkle and sophisticated charm into your most precious moments. Prepare to discover the perfect adornment that speaks volumes about your unique style and truly illuminates your bridal radiance







BACK CHAIN - LIZZY  
ARM CHAIN - TRISHA



BACK CHAIN - ARIELLA  
ARM CHAIN - ELIANNA





BACK CHAIN - SAYO



BACK CHAIN - LEAH  
ARM CHAIN - ZARA



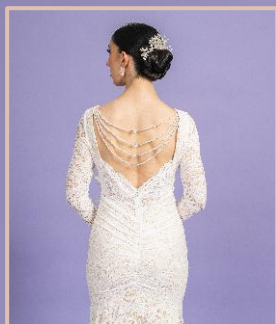


BACK CHAIN - EMELIA





BACK CHAIN - PHOEBE  
ARMCHAIN - LOLA



BACK CHAIN - RHODA





BACK CHAIN - PRIYA

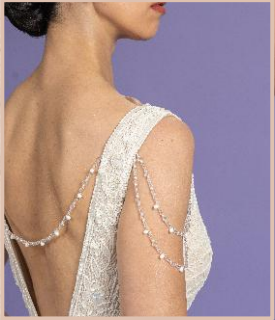
# Versatility

Our bridal chains are designed with incredible versatility to complement a wide array of wedding dress styles. Whether you've chosen a classic A-line, a glamorous mermaid, a flowing bohemian gown, or a sleek sheath, our chains are crafted to enhance your look. With adjustable lengths, delicate designs that don't overpower intricate details, and the option to be worn in multiple ways, our chains ensure seamless elegance. This adaptability means your Rachael's Maids piece will not only perfectly accent your chosen dress, but can also be cherished and re-styled for future occasions.





BACK CHAIN - LARA  
ARM CHAIN - CLARA



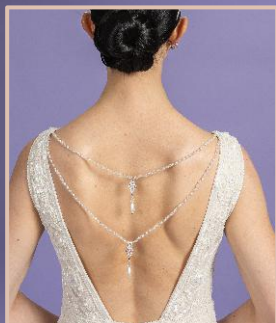
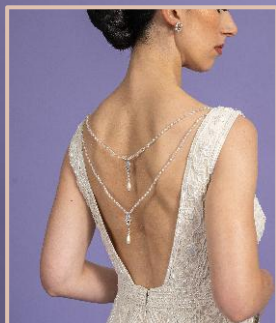




BACK CHAIN - STELLA



BACK CHAIN - MAGS  
ARM CHAIN - SEUN

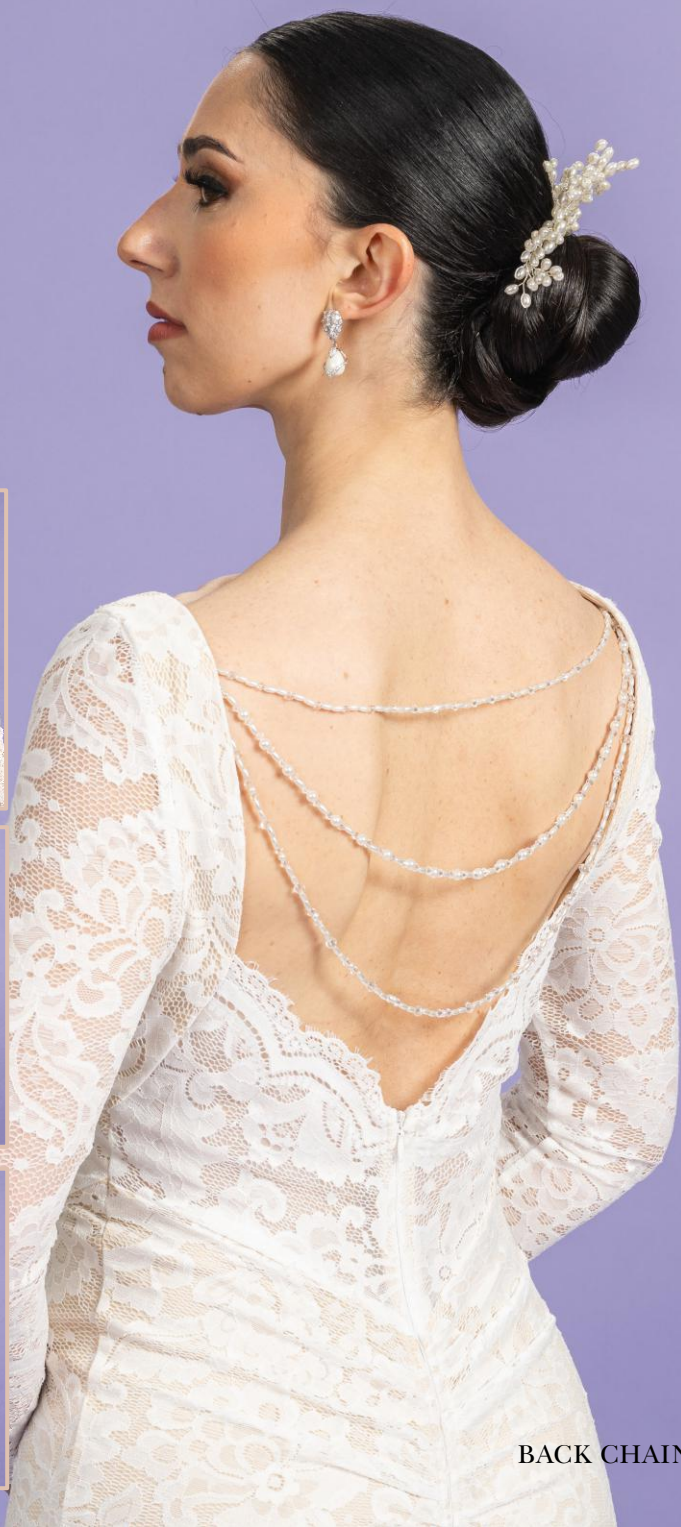


BACK CHAIN - TEMI





BACK CHAIN - LAILA

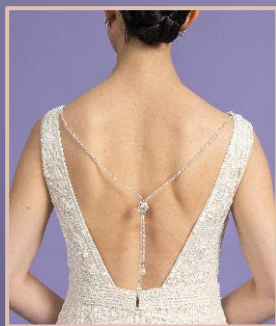


BACK CHAIN - NINA





BACK CHAIN - KATERINA  
ARM CHAIN - CAROLINA

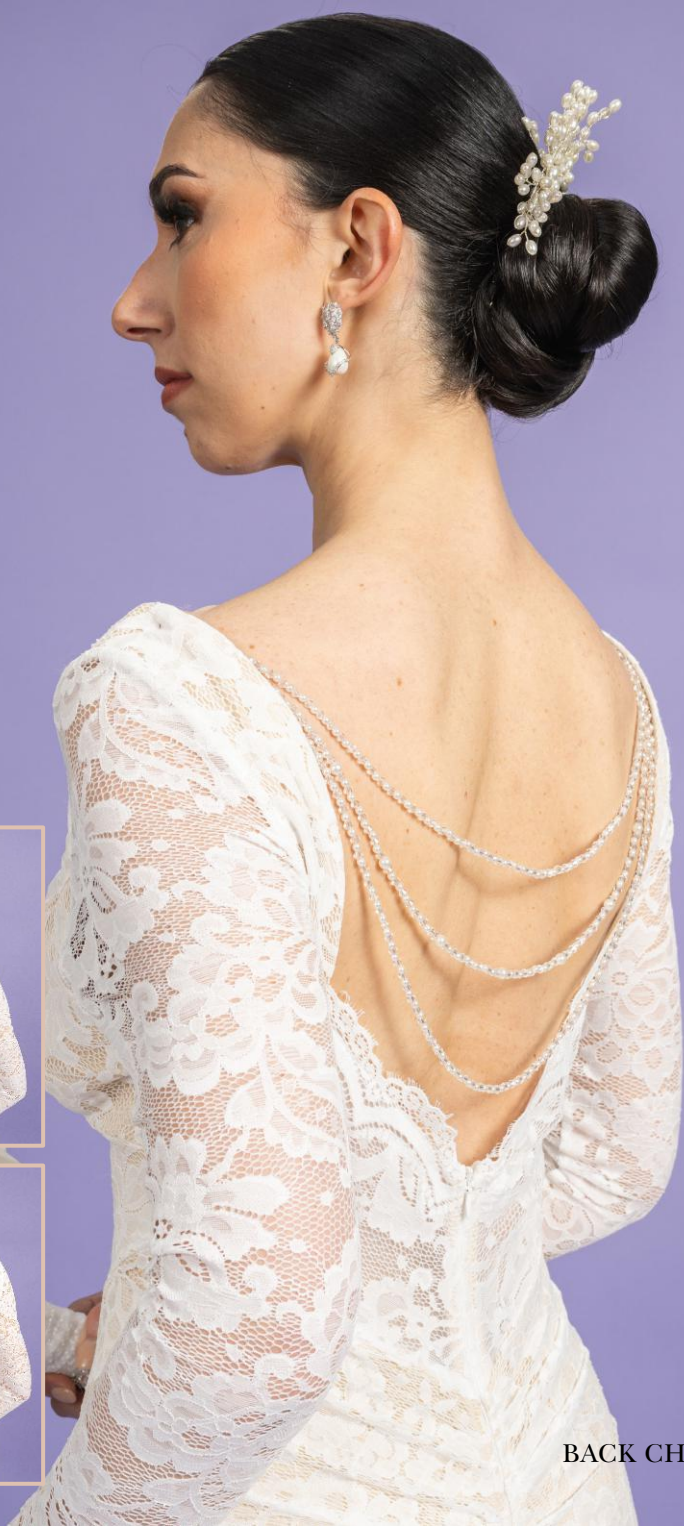


BACK CHAIN - OLIVIA





BACK CHAIN - ALISON  
ARM CHAIN - SONYA



BACK CHAIN - TAJA





BACK CHAIN - SHAUNA





## Individuality

Individuality is at the heart of every bridal chain we create. We understand that your wedding day is a celebration of your unique love story, and your accessories should reflect that personal touch. Our designs move beyond mass-produced uniformity, focusing instead on crafting exquisite bridal chains that highlight your distinct style and vision. We believe that each bride deserves to feel uniquely radiant, and our chains are meticulously designed to ensure you not only accessorize your gown but also express your authentic self with confidence and grace.

# The Ariella Collection

This collection is a testament to the timeless beauty of subtle sophistication. Crafted with the modern bride in mind, this new line of bridal chain accessories is inspired by the singular aim to effortlessly complete your wedding day look. Designed for simplistic elegance and unparalleled versatility, each piece in the Ariella Collection seamlessly enhances your gown, offering that perfect, understated finishing touch that speaks volumes without overwhelming





BACK CHAIN - BEATRICE  
ARM CHAIN - MIRIAM





BACK CHAIN - ALICE  
ARM CHAIN - PATRICIA



BACK CHAIN - YINKA





ARM CHAIN - SUZY





BACK CHAIN - TANYA



ARM CHAIN - TOLU





BACK CHAIN - TRACY





BACK CHAIN - TRACY II



ARM CHAIN - JAMIMAH



## *Glamour*

Everything we do at Rachael's maids embodies pure Glamour to ensure that every bride look utterly dazzling and unforgettable. Each chain is meticulously designed with exquisite detail. Be it shimmering crystals, lustrous pearls, or delicate metallic accents that catch the light and create a breathtaking impression. Our goal is to infuse your bridal look with a sophisticated sparkle, elevating your ensemble from beautiful to truly magnificent and ensuring you radiate an undeniable aura of elegance and allure as you walk down the aisle.





BACK CHAIN - WINNY



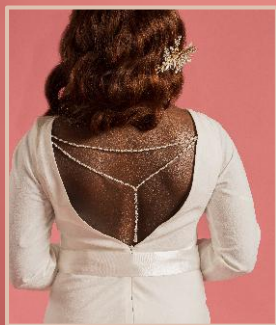
BACK CHAIN - VICKY





BACK CHAIN - ISABELLE  
ARM CHAIN - ABIGAIL





BACK CHAIN - SANDRA



BACK CHAIN - AMY  
ARMCHAIN - ELLA





BACK CHAIN - JOHANNA  
ARM CHAIN - GABBY





BACK CHAIN - CELLA



BACK CHAIN - PRICILLA



# Testimonials

The ultimate testament to our dedication comes directly from the happy brides who choose us for their special day. We are incredibly proud of the overwhelmingly positive feedback we receive, as it reflects our commitment to quality, attention to detail, and passion for helping every bride feel truly exceptional. Their heartfelt words reinforce that we are not just creating accessories but contributing to cherished memories. Here is a glimpse into what some of our wonderful brides have shared:



"Absolutely fabulous go perfectly with my dress they add that extra special touch to the dress can't wait to wear them on my wedding day x"



"Oh my goodness I'm absolutely delighted with them they look stunning, very well made and I actually am so excited to see them on my dress! Packaged beautifully too, a pleasure to buy from you."



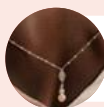
"Excellent work, very good quality and great execution. I'll be looking forward to putting these on my gown"



"Beautiful jewellery, excellent quality. Thank you so much and can't wait to wear them on my wedding day!"



"Very nice :) I'm looking forward to my dress with the chains."



"How amazing was this! Everyone said it looked great on my dress I'm so happy with it thank you."



"Brilliant - thank you! Such a subtle addition to the dress but the set really made my outfit pop and I received lots of compliments. Thank you!"



"High quality and beautifully constructed I purchased the matching set for back and arm. With the strong lobster claw clasp they are easy to attach and remove. Just wonderful! They arrived to the US from Europe within a week well packaged and the seller sent me messages same day to let me know when to expect my delivery. Highly recommend without reservations!"





# Custom Orders

We are delighted to offer a bespoke service for our exquisite bridal chains, allowing you to personalise every detail. From selecting the perfect colour of beads to choosing your preferred fastening style for comfort and security and ensuring the ideal length to perfectly complement your gown's detail. We can tailor each piece to your exact specifications by either enhancing an existing design with additional layers, embellishments or simply a design that is uniquely designed for you from scratch that reflects your vision for your special day.

Popular variations are:

- ◇ Change in colour
- ◇ Changing in length
- ◇ Additional layers
- ◇ adding other embellishments

## Fitting

Our bridal chains feature a lobster clasp on each end for straightforward attachment directly to your dress, adapting easily to different fabrics and styles. For alternative securement, a small hoop can be discreetly sewn inside the gown, providing a simple and reliable attachment point. Another option we provide for back chains is to use a brooch to beautifully secure the chains, adding an extra touch of personal elegance.

Lobster clasp



Brooch





## Partner with Rachael's Maids

Rachael's Maids is delighted to partner with bridal stores, offering our exquisite bridal chains to elevate your collection and provide your brides with truly special pieces. You can choose from our existing range of beautifully crafted designs, ready to add a touch of glamour and versatility to your offerings.

We are now also offering our bespoke services to bridal stores allowing you to provide your brides with a uniquely personal accessory. Whether it is a specific length, a particular embellishment, or a design tailored to perfectly complement a gown style, we are here to bring that vision to life. To ensure seamless integration and perfect results, we offer consultations to discuss your store's needs and your brides' desires, guaranteeing that every Rachael's Maids chain adds unparalleled beauty and individuality to their wedding day look.

To find out more information about partnering with call please email [orders@rachaelsmaids.com](mailto:orders@rachaelsmaids.com)



## Other Collections

Our focus on “completing the look” is also extended to our bridal capes and detachable sleeve expertise. Our detachables are made with unparalleled charm and personalization. From ethereal bridal capes that transform your silhouette with a sweep of elegance, to arm attachments that add a touch of romance or modern edge which allows for versatile styling from ceremony to reception. Every piece is crafted to seamlessly integrate with your chosen gown, ensuring you radiate confidence and showcase your unique style from every angle on your special day.





A photograph of two women in wedding dresses standing in a grassy field with trees in the background. The woman on the left is wearing a white dress and a veil, looking towards the camera. The woman on the right is wearing a white lace dress with a low back, looking away from the camera. The text is overlaid on the image.

## *Special Thanks to*

***Breckland Studio - Photography***

***Larie's Hair - Hair Stylist***

***Anais Bridal Hair - Hair Stylist***

***Rhapsody Hair - Hair Stylist***

***Victoria Bradfield - Makeup Artist***

***Purple Lips - Makeup Artist***


***Beats by Jessie - Makeup***

***Lauren - Model***

***Flavia - Model***

***Ciza - Model***

***Pirolabs - Website***



From the soft shimmer  
of pearls to the intricate  
details that whisper  
romance, each chain  
piece in this collection  
is designed to elevate  
your bridal moment  
into something  
unforgettable.



Rachaels.Maids



01787743044



Orders@rachaelsmaids.com



www.rachaelsmaids.com