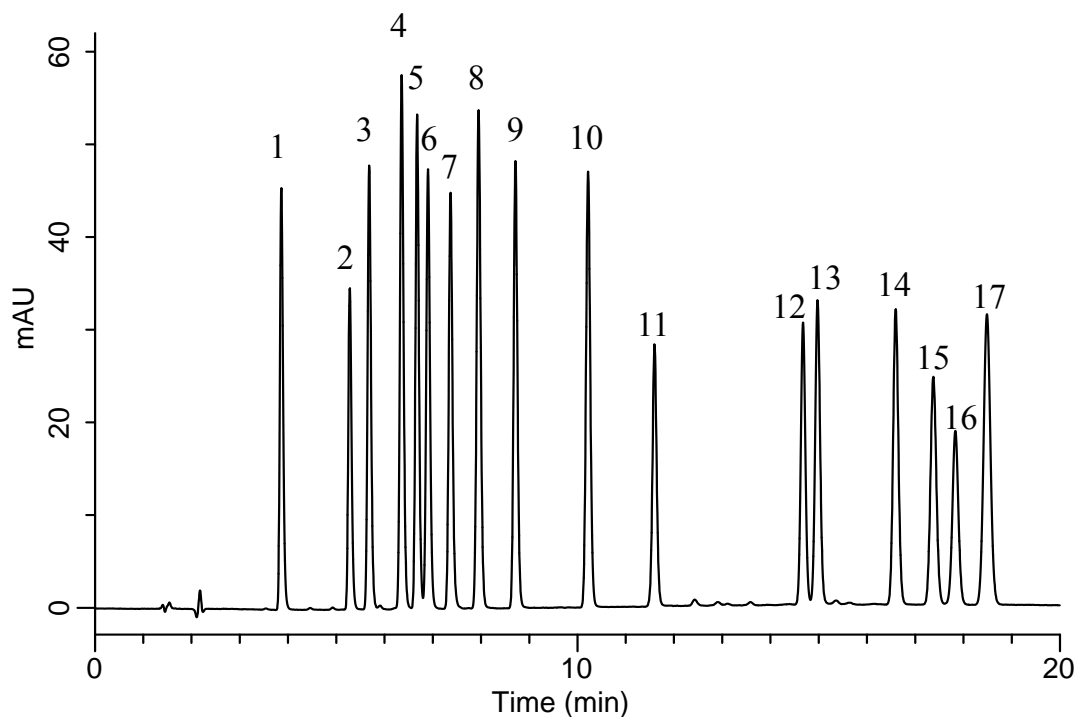


InertSearch™ for LC

Inertsil® Applications

Analysis of PTH-Amino acids

Data No. LA804-0894



Conditions

System : GL-7400 HPLC system
Column : Inertsil ODS-4 (3 μ m, 150 x 4.6 mm I.D.)
Column Cat. No. : 5020-04045
Eluent : A) CH₃CN
B) 10 mM NH₄H₂PO₄ (pH 2.5, H₃PO₄)
A/B = 20/80 – 12 min – 45/55 – 8 min – 45/55 , v/v
Flow rate : 1.0 mL/min
Col. Temp. : 40 °C
Detection : UV 254 nm (GL-7452A PDA Detector)
Injection Vol. : 5 μ L
Sample : PTH-amino acids

Solutes:

1.	Histidine	(His)	20 mg/L
2.	Arginine	(Arg)	20 mg/L
3.	Asparagine	(Asn)	20 mg/L
4.	Glutamine	(Gln)	20 mg/L
5.	Tyrosine	(Tyr)	20 mg/L
6.	Aspartic acid	(Asp)	20 mg/L
7.	Glutamic acid	(Glu)	25 mg/L
8.	Glycine	(Gly)	20 mg/L
9.	Threonine	(Thr)	20 mg/L
10.	Alanine	(Ala)	20 mg/L
11.	Serine	(Ser)	20 mg/L
12.	Methionine	(Met)	20 mg/L
13.	Proline	(Pro)	20 mg/L
14.	Tryptophan	(Trp)	25 mg/L
15.	Phenylalanine	(Phe)	25 mg/L
16.	Lysine	(Lys)	10 mg/L
17.	Leucine	(Leu)	25 mg/L