



RAFFAELLO
ROSSI

Artikelkarten I Fabric Cards

Herbst / Winter 2025 I
Autumn / Winter 2025

Stand I Status: 17.02.2025

WE ARE ON THE WAY TO GO BEYOND

RAFFAELLO ROSSI X SUSTAINABILITY

WE ARE ON THE WAY

Alles auf Anfang. Wir sind weit davon entfernt perfekt zu sein. Doch das soll unser Antrieb und unsere Motivation sein. Wir sind auf dem Weg. Wir hinterfragen unser Handeln jeden Tag neu und machen uns auf die Suche nach besseren Lösungen, um für uns die Nachhaltigkeits-Standards im Premium-Fashion Segment neu zu definieren.

New beginnings. We are far from being perfect. Nevertheless, this is our incentive and our motivation. We are on the way. We question our actions every day and go in search of better solutions, to redefine the sustainability standards in the premium fashion segment.



Alle Raffaello Rossi Hosen werden in Europa produziert. Damit unterstreichen wir die kurzwegige Produktion, überwiegend in Rumänien bei unseren langjährigen Partnern unter Einhaltung von europäischen Sozialstandards (z. B.: geregelte Arbeitszeiten, Mindestlohn, Sozialversicherungen, etc.).

All Raffaello Rossi pants are produced in Europe. Thereby we underline the short routed production mainly in Rumania at our long-term partner factories who observe the European social standards (such as controlled working hours, minimum salaries, social insurance, etc.).



Wir sehen uns in der Verantwortung den Anbau nachhaltiger Baumwolle zu unterstützen. Deshalb sind wir seit 2021 stolzes Mitglied bei Better Cotton. Gemeinsam setzen wir uns für die Verbesserung der Baumwollanbaumethoden weltweit ein. Wir haben uns verpflichtet, bis 2026 mindestens 50% unserer Baumwolle als Better Cotton zu beziehen. Das Ziel haben wir erfreulicherweise bereits in 2022 erreicht. Mit dem Kauf einer Raffaello Rossi Hose unterstützen Sie unser Engagement für mehr nachhaltige Baumwolle. Better Cotton wird über ein System der Massenbilanz beschafft und ist nicht physisch bis zum Endprodukt rückverfolgbar. Einzelheiten finden Sie unter: raffaello-rossi.de/sustainability/bci

We see ourselves in the responsibility to support the cultivation of sustainable cotton. This is why we have been a proud member of Better Cotton since 2021. Together, we are committed to improving cotton farming practices worldwide. We have pledged to sourcing at least 50% of our cotton as Better Cotton by 2026. We are pleased to say that we have already achieved this goal in 2022. By purchasing a pair of Raffaello Rossi pants, you are supporting our commitment to more sustainable cotton. Better Cotton is sourced through a mass balance system and is not physically traceable to the final product. For details, visit: raffaello-rossi.de/sustainability/bci



Ist ein textiler Artikel mit dem STANDARD 100 Label ausgezeichnet, können Sie sich darauf verlassen, dass alle Bestandteile dieses Artikels, d.h. auch alle Garne, Knöpfe und sonstige Accessoires, auf Schadstoffe geprüft wurden und der Artikel somit gesundheitlich unbedenklich ist. Die Prüfung wird von unabhängigen OEKO-TEX® Instituten auf der Grundlage eines umfangreichen Kriterienkataloges durchgeführt.

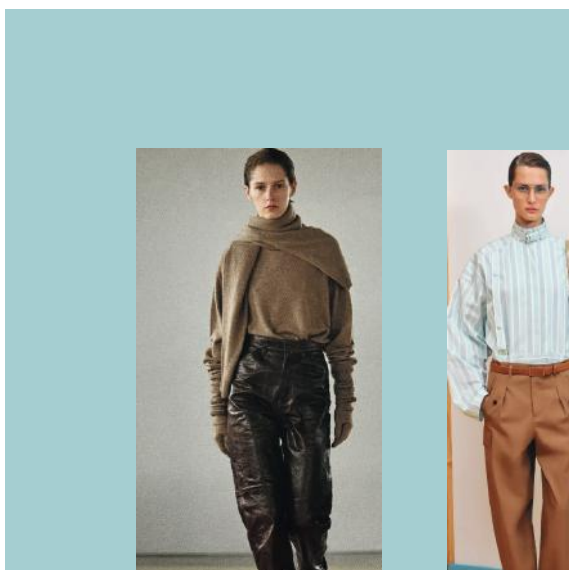
If a textile article is awarded the STANDARD 100 label, you can be sure that all components of this article, i.e. also all yarns, buttons and other accessories, have been tested for harmful substances and the article is therefore harmless to health. The testing is carried out by independent OEKO-TEX® institutes on the basis of an extensive catalogue of criteria.



Autumn Landscapes

Delivery Date: 15.06.2025 - 31.07.2025

Articles: 6212, 6537, 6774, 6925, 6926; 6928, 8896, 8897, 9379, 9564, 9901, 9987 H/W 2025

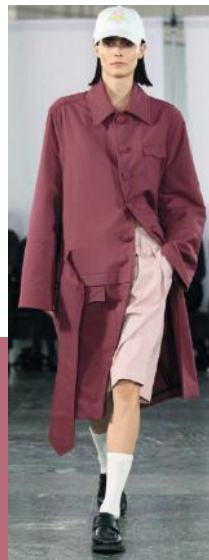


Chocolate Blues

Delivery Date: 15.07.2025 - 30.08.2025

Articles: 3023, 6106, 6112, 6633, 6736, 6813, 6853, 8898, 8901, 9947,
8895, 8903, 9099, 9645, 9903

H/W 2025



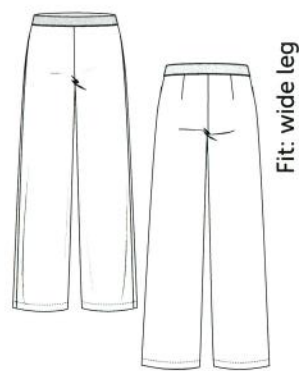
Black Cherry Kiss

Delivery Date: 15.08.2025 - 15.09.2025

Articles: 3027, 6287, 6861, 6900, 6921, 6922, 6927, 6946, 8827, 8883,
8902, 9037, 9386

H/W 2025

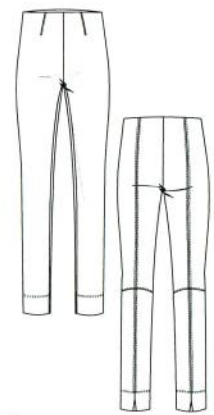
73% Viscose
23% Polyamide
4% Elastane



Fit: wide leg

Elaine Ribbon

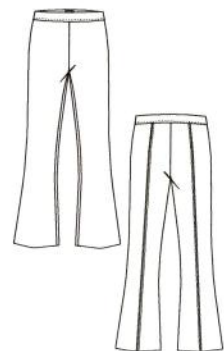
Style 29933
Price 55149059,57
063189
LH/FW/SL 25/53/80



Fit: slim

Penny

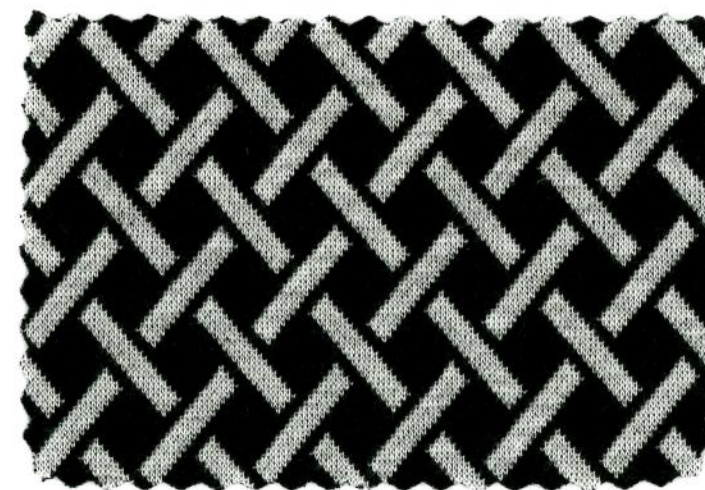
Style 212978
Price 48129052,50
056169
LH/FW/SL 23/29/74



Macy 7/8

Style 219378
Price 048129052,50

LH/FW/SL 25/40/70



Col.: 11 white graphical



Col.: 61 brown graphical

98% Polyester
2% Elastane



Fit: wide leg



Ranka

Style 5074
Price 67179071,69
076229
LH/FW/SL 26/77/67



Ranja

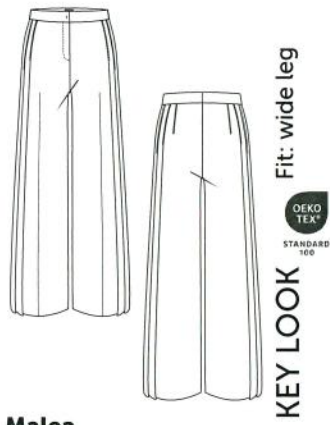
Style 4215
Price 63169067,65
073219
LG 75



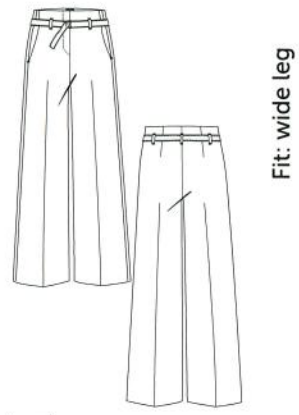
Col.: 990 black

Article: 6106 Light Flannel

59% Polyester
26% Viscose
14% Wool
1% Elastane



Malea
Style 5317
Price 74199078,76
083249
LH/FW/SL 29.5/74/82



Anais
Style 28363
Price 74199078,76
083249
LH/FW/SL 29/62/81



Tavia 7/8
Style 507571
Price 70189074,72
079239
LH/FW/SL 32/40/70



Col.: 626 funghi



Col.: 680 tabac



Col.: 960 grey

Article: 6112 Wool Flannel

51% Polyester
27% Viscose
20% Wool
2% Elastane



Mayla
Style 2066
Price 63169067,65
073219
LH/FW/SL 32.5/57/83



Mayla 6/8
Style 206668
Price 63169067,65
073219
LH/FW/SL 32.5/48/67



Jascha O
Style 24471
Price 70189074,72
079239
LH/FW/SL 29.5/72/83



Lisan 6/8
Style 508168
Price 63169067,65
073219
LH/FW/SL 31/46/65



Col.: 952 grey



Col.: 614 toffee



Col.: 970 anthracite



Col.: 890 navy blue

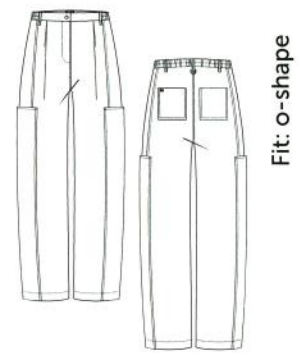
Article: 6212 Twill Peach Touch

49% Lyocell
49% Viscose
2% Elastane

garment dyed



Miru
Style 2078
Price 67179071,69
076229
LH/FW/SL 28/60/83



Alwina
Style 5097
Price 67179071,69
076229
LH/FW/SL 31/55/80

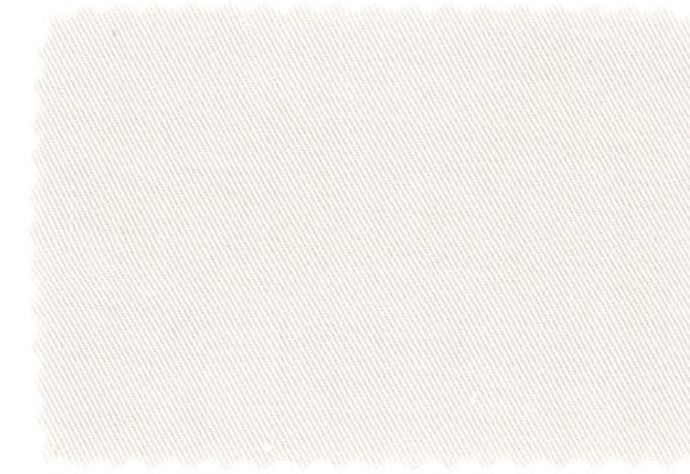


Lisan 6/8
Style 508168
Price 63169067,65
073219
LH/FW/SL 31/46/65



Mir 6/8
Style 207868
Price 63169067,65
073219
LH/FW/SL 28/58/68

Streichung / Discontinued



TENCEL™

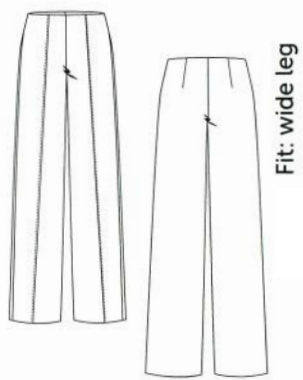


TENCEL™ Lyocellfasern haben sich einen guten Ruf für ihr umweltfreundliches, geschlossenes Produktionsverfahren erworben, das Zellstoff in Zellulosefasern mit hoher Ressourceneffizienz und geringer Umweltbelastung umwandelt. Bei diesem Lösungsmittelspinnverfahren wird das Prozesswasser recycelt und das Lösungsmittel mit einer Rückgewinnungsrate von über 99 % wiederverwendet. Die Verbraucher können sich darauf verlassen, dass ihre modischen Entscheidungen nicht zu einer Beeinträchtigung der Umwelt führen.

TENCEL™ Lyocell fibers have gained a commendable reputation for their environmentally responsible, closed loop production process, which transforms wood pulp into cellulosic fibers with high resource efficiency and low environmental impact. This solvent-spinning process recycles process water and reuses the solvent at a recovery rate of more than 99%. Consumers can have the assurance that their fashion choices are not contributing to an adverse impact on the environment.

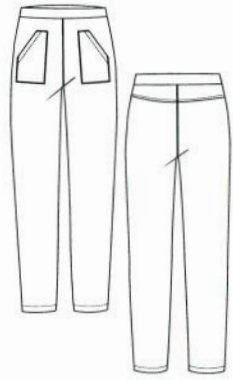
Article: 6287 Fluid Flannel

50% Cotton
42% Viscose
7% Polyamide
1% Elastane



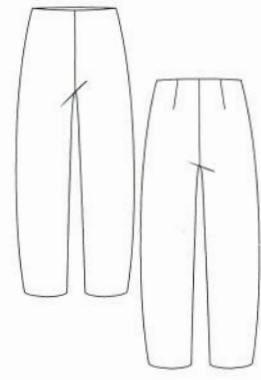
Fit: wide leg

Elaine
Style 2993
Price 59159063,61
066198
LH/FW/SL 25/53/80



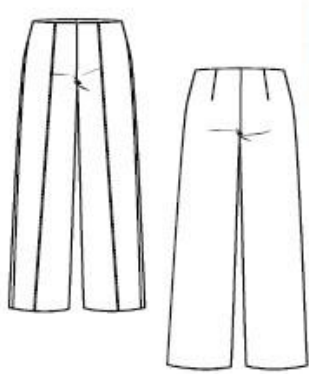
Fit: relaxed

Ira O 7/8
Style 20622
Price 70189074,72
079239
LH/FW/SL 30/36/70



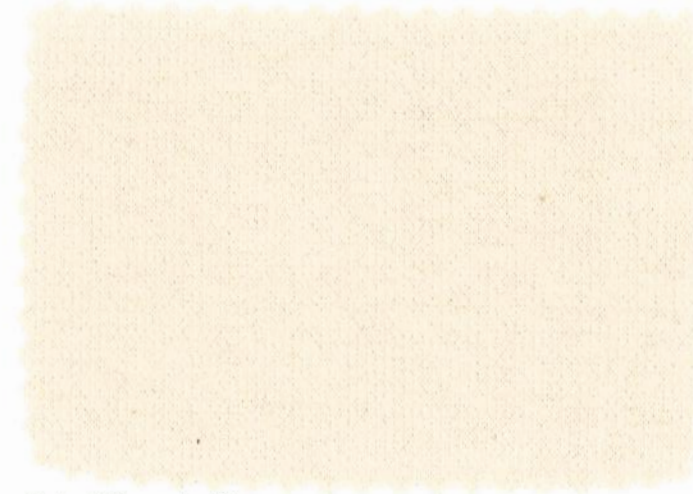
Fit: relaxed

Sally 7/8
Style 586778
Price 59159063,61
066198
LH/FW/SL 26/48/70



Fit: Wide Leg

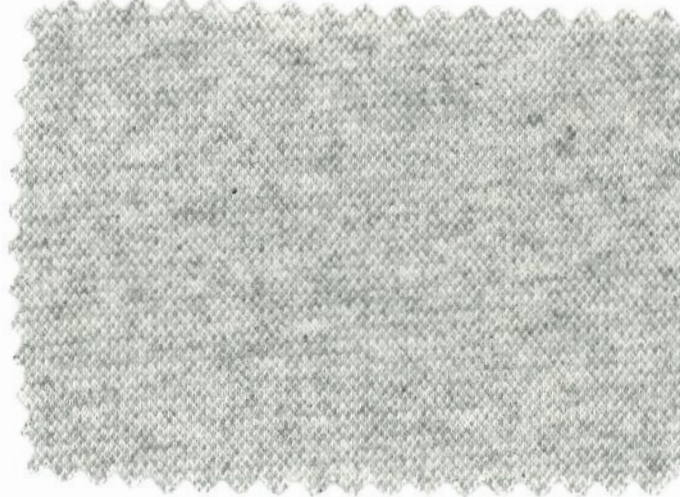
Elaine 7/8
Style: 299378
Price: 059159063.61
LH/FW/SL: 25/53/73



Col.: 320 woolwhite



Col.: 374 cashew



Col.: 915 pearl

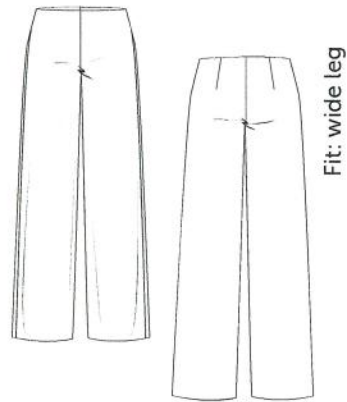


Col.: 585 burgund



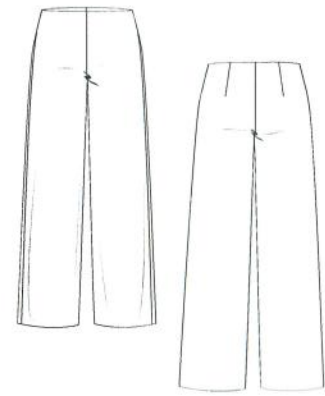
Col.: 980 asphalt

76% Cotton
22% Polyester
2% Elastane



Fit: wide leg

Elaine
Style: 2993
Price: 055149059.57
LH/FW/SL: 25/53/81



Fit: wide leg

Elaine 7/8
Style: 299378
Price: 055149059.57
LH/FW/SL: 25/53/74



Col.: 330 dune



Col.: 373 almond



Col.: 990 black

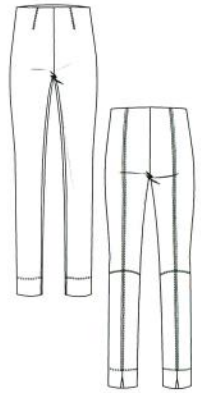


Col.: 588 barolo



Col.: 679 choco

47% Polyamide
46% Cotton
7% Elastane

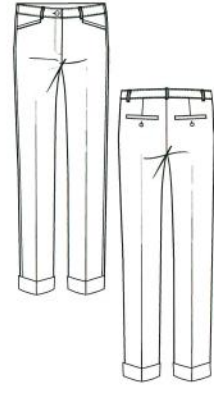


Fit: slim



NOS
I'm on stock

Penny
Style 212978
Price 44119048,46
053159
LH/FW/SL 23/29/74

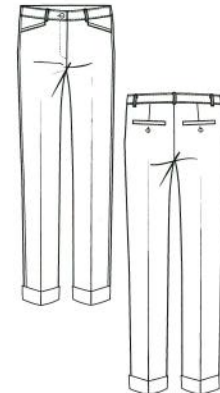


Fit: slim



NOS
I'm on stock

Ute 7/8
Style 229678
Price 59159063,61
066198
LH/FW/SL 23/35/70

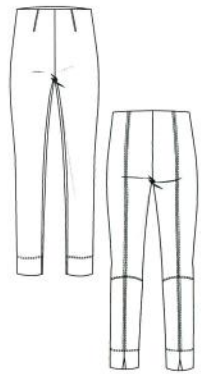


Fit: slim



NA

Ute
Style 2296
Price 59159063,61
066198
LH/FW/SL 23/35/78

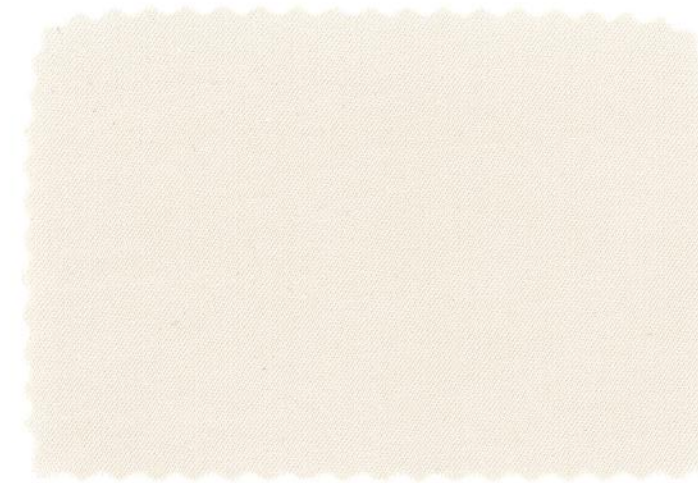
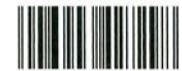


Fit: slim



NOS
I'm on stock

Penny 6/8
Style 212968
Price 44119048,46
053159
LH/FW/SL 23/32/63



Col.: 330 dune



Col.: 374 cashew



Col.: 742 aloe vera



Col.: 915 pearl



Col.: 767 moss



Col.: 679 choco

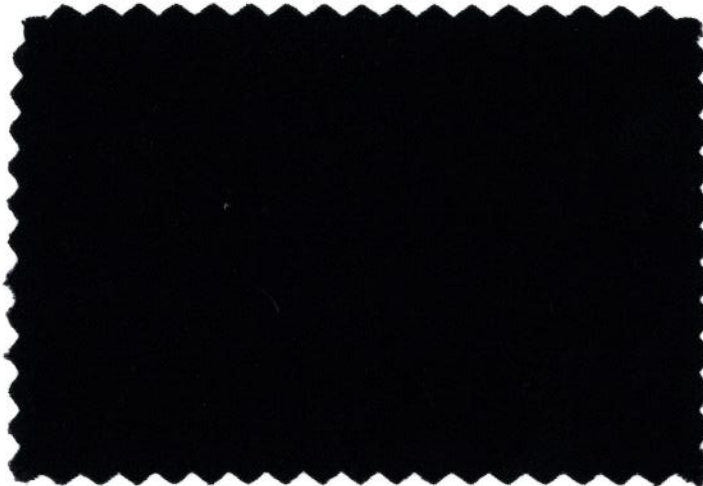
Article: 6537 Techno Cotton Superstretch

 RAFFAELLO ROSSI

47% Polyamide
46% Cotton
7% Elastane



Col.: 955 slate



Col.: 890 navy blue



Col.: 990 black

Article: 6633 Super Fluent Corduroy

60% Cotton
37% Lyocell
3% Elastane



Sventy
Style 2026
Price 74199078,76
083249
LH/FW/SL 27/65/83



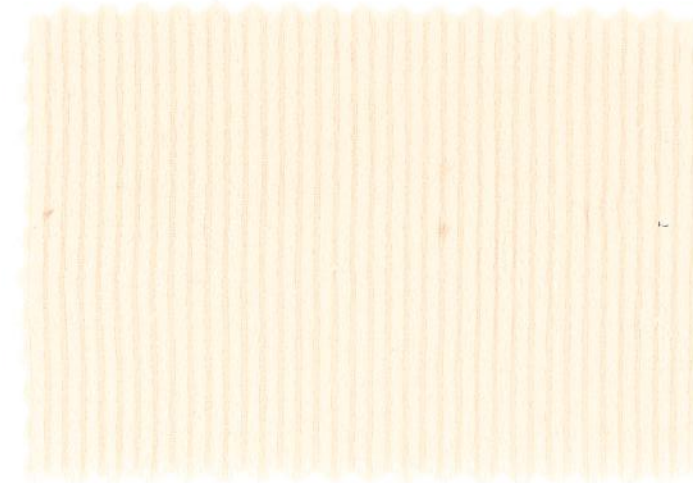
Mayla
Style 2066
Price 67179071,69
076229
LH/FW/SL 32.5/57/83



Mayla 6/8
Style 206668
Price 67179071,69
076229
LH/FW/SL 32.5/48/67



Col: 679 choco



Col.: 325 crema



Col.: 585 burgund



Col.: 347 sabbia



Col.: 873 eclipse blue

TENCEL™



TENCEL™ Lyocellfasern haben sich einen guten Ruf für ihr umweltfreundliches, geschlossenes Produktionsverfahren erworben, das Zellstoff in Zellulosefasern mit hoher Ressourceneffizienz und geringer Umweltbelastung umwandelt. Bei diesem Lösungsmittelspinnverfahren wird das Prozesswasser recycelt und das Lösungsmittel mit einer Rückgewinnungsrate von über 99 % wiederverwendet. Die Verbraucher können sich darauf verlassen, dass ihre modischen Entscheidungen nicht zu einer Beeinträchtigung der Umwelt führen.

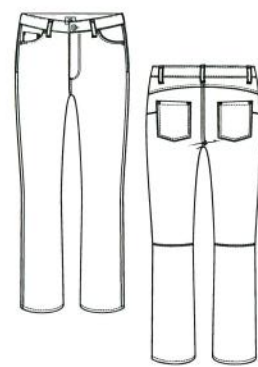
TENCEL™ Lyocell fibers have gained a commendable reputation for their environmentally responsible, closed loop production process, which transforms wood pulp into cellulosic fibers with high resource efficiency and low environmental impact. This solvent-spinning process recycles process water and reuses the solvent at a recovery rate of more than 99%. Consumers can have the assurance that their fashion choices are not contributing to an adverse impact on the environment.

95% Viscose
5% Elastane



Fit: slim

Resa
Style 275878
Price 48129052,50
056169
LH/FW/SL 24/27/74



Fit: slim

Kasia 7/8
Style 50671
Price 67179071,69
076229
LH/FW/SL 23.5/40/72



Col.: 585 burgund



Col.: 650 nut



Col.: 761 olive



Col.: 680 tabac

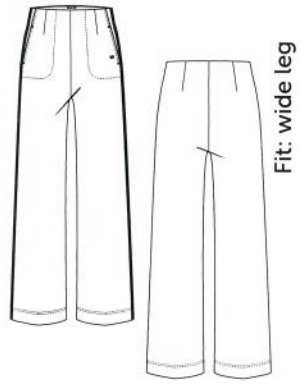


Col.: 952 dark grey



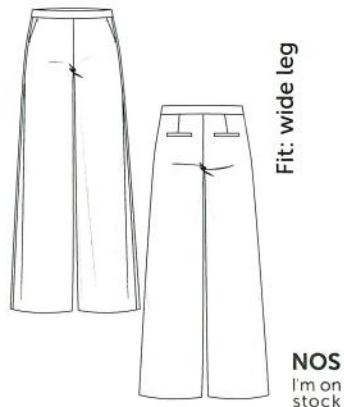
Col.: 990 black

95% Polyester
5% Polyurethane



Fit: wide leg

Vika
Style 5069
Price 74199078,76
083249
LH/FW/SL 28/60/83

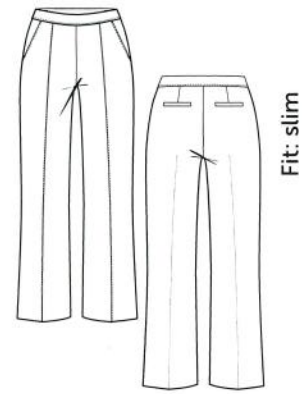


Fit: wide leg

Palina Long
Style 2610
Price 74199078,76
083249
LH/FW/SL 27/55/81



NOS
I'm on stock



Fit: slim

Renée
Style 2530
Price 70189074,72
079239
LH/FW/SL 27/51/74



Fit: wide leg

Palina 6/8
Style 261068
Price 74199078,76
083249
LH/FW/SL 27/55/68



NA



Col.: 320 woolwhite



Col.: 649 dark chocolate



Col.: 771 olivin



Col.: 890 navy blue

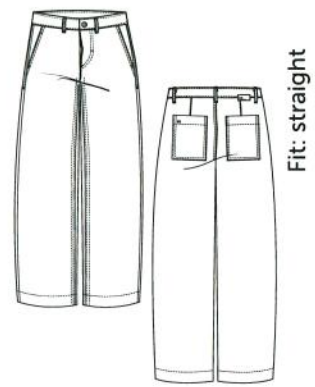


Col.: 585 burgund



Col.: 990 black

90% Polyester
8% Polyamide
2% Elastane

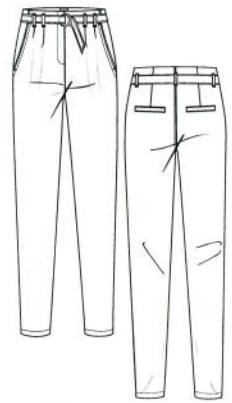


Yuki
Style 50551
Price 74199078,76
083249
LH/FW/SL 29/52/74



Col.: 360 gold

67% Polyester
29% Viscose
4% Elastane



Fit: slim



Nicole 7/8

Style 27964
Price 67179071,69
076229
LH/FW/SL 30/40/70

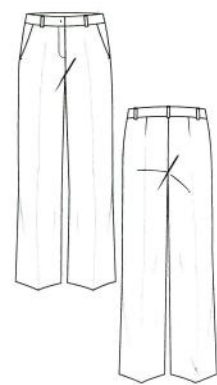


Fit: slim



Dora Cropped 7/8

Style 25754
Price 59159063,61
066198
LH/FW/SL 23.5/40/68

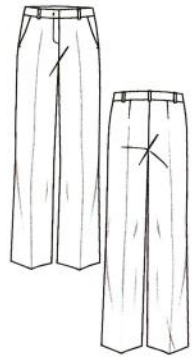


Fit: straight



Olessa 7/8

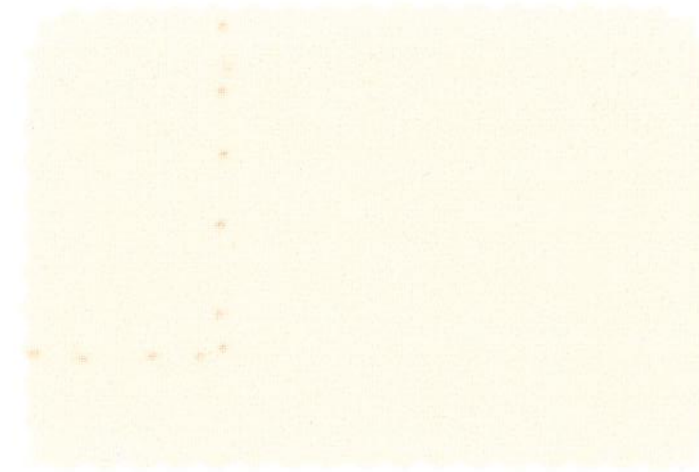
Style 256778
Price 55149059,57
063189
LH/FW/SL 24.5/48/68



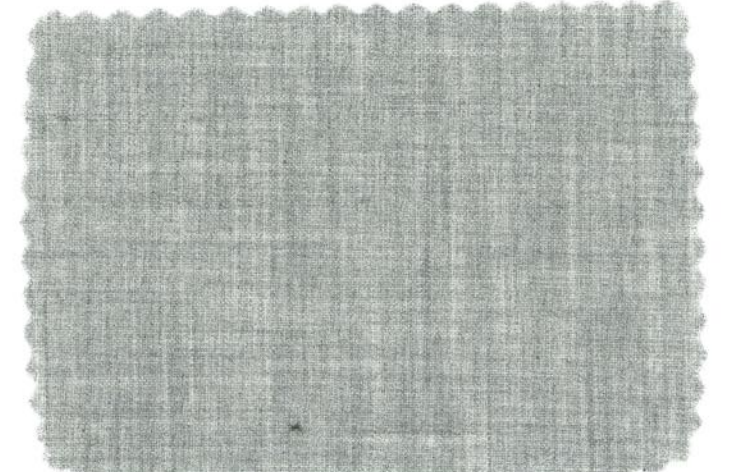
NA

Olessa

Style: 2567
Price: 055149059,57
LH/FW/SL: 25/48/85



Col.: 325 crema



Col.: 922 light silver



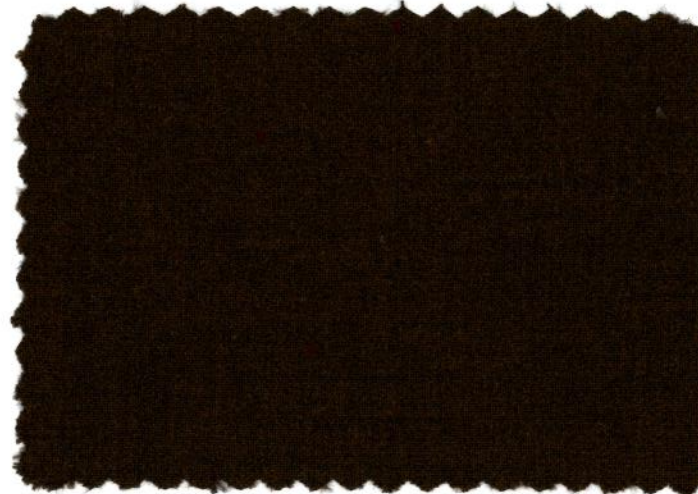
Col.: 347 sabbia



Col.: 890 navy blue



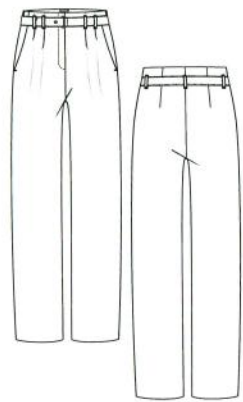
Col.: 588 barolo



Col.: 680 tabac

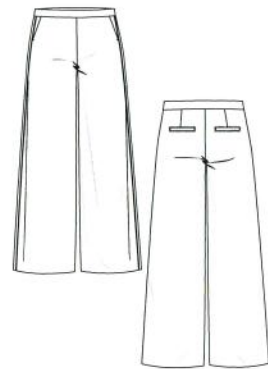


Col.: 990 black



Fit: straight

Nicole
Style 279641
Price 89239093,91
093279
LH/FW/SL 30/50/81



Fit: wide leg



Palina 6/8
Style 261068
Price 74199078,76
083249
LH/FW/SL 27/55/68



Col.: 680 tabac

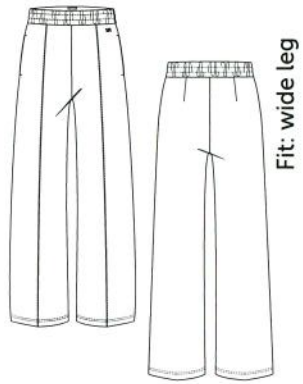


Col.: 588 barolo



Col.: 990 black

50% Polyurethane
50% Polyester



Cosmea
Style 5070
Price 67179071,69
076229
LH/FW/SL 27/54/83



KEY LOOK

Mayla 6/8
Style 206668
Price 74199078,76
083249
LH/FW/SL 32.5/48/67

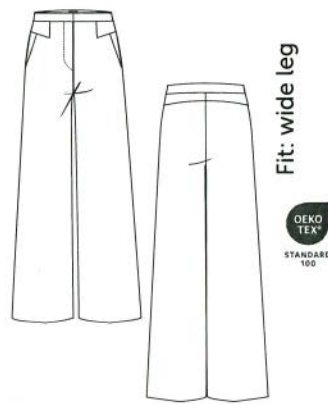


Smea
Style 4353
Price 55149059,57
063189
LG 83



Col.: 990 black

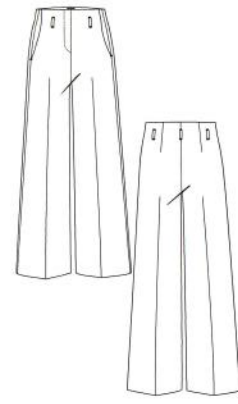
63% Polyester
33% Viscose
2% Metal fibre
2% Elastane



Fit: wide leg



Xenia
Style 2448
Price 70189074,72
079239
LH/FW/SL 29/63/83



Fit: wide leg

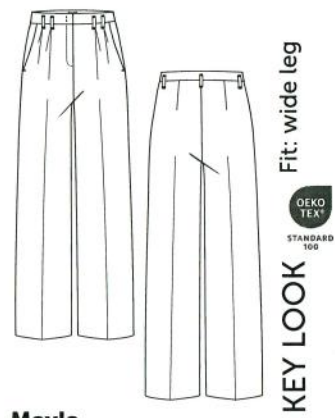


Anais
Style 28361
Price 67179071,69
076229
LH/FW/SL 29/62/81



Col.: 93 dark grey graphical

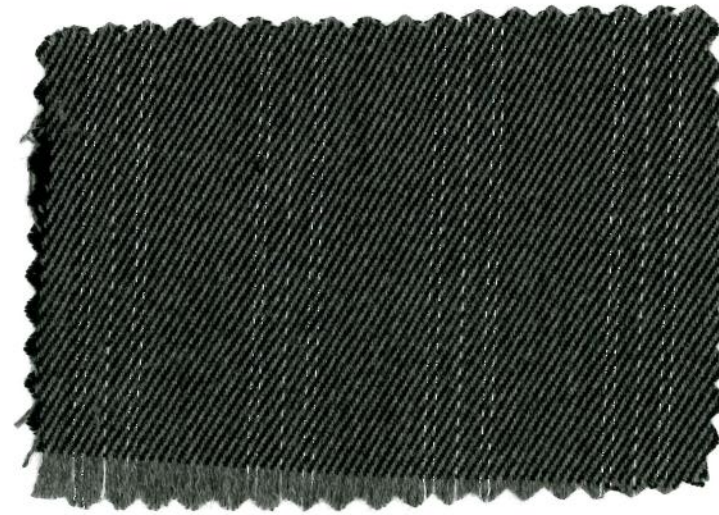
63% Polyester
33% Viscose
2% Metal fibre
2% Elastane



Mayla
Style 2066
Price 70189074,72
079239
LH/FW/SL 32.5/57/83

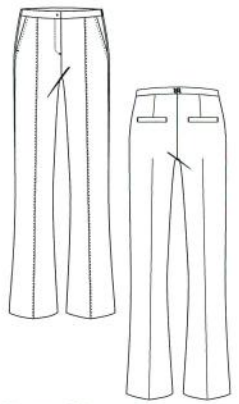


Anais
Style 28361
Price 67179071,69
076229
LH/FW/SL 29/62/81



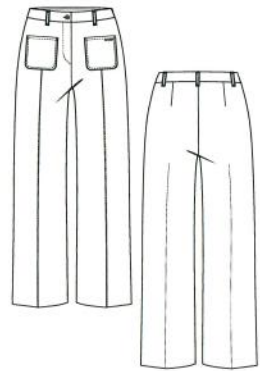
Col.: 92 light grey graphical

54% Viscose
36% Polyamide
10% Elastane



Fit: slim
KEY LOOK

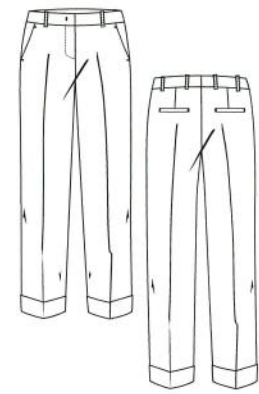
Doro Flared
Style 506212
Price 55149059,57
063189
LH/FW/SL 25.5/60/83



Fit: straight



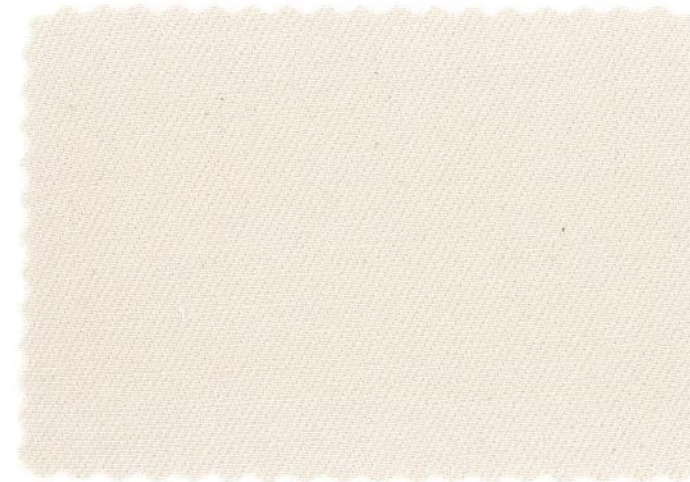
Miley
Style 5323
Price 55149059,57
063189
LH/FW/SL 25.5/52/75



Fit: slim



Kriss 7/8
Style 5078
Price 55149059,57
063189
LH/FW/SL 25.5/36/68



Col.: 330 dune



Col.: 890 navy blue

only for color



Col.: 383 camel

only for color



Col.: 990 black

only for color



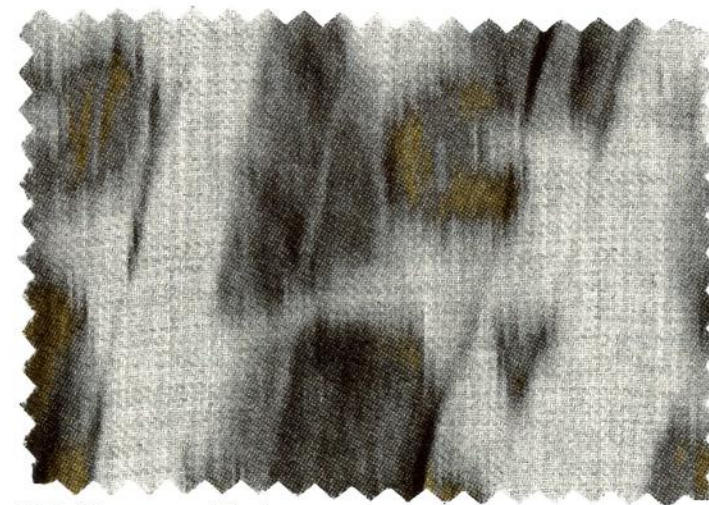
Dominque

Style 2533
Price 67179071,69
076229
LH/FW/SL 32/60/80



Jayda

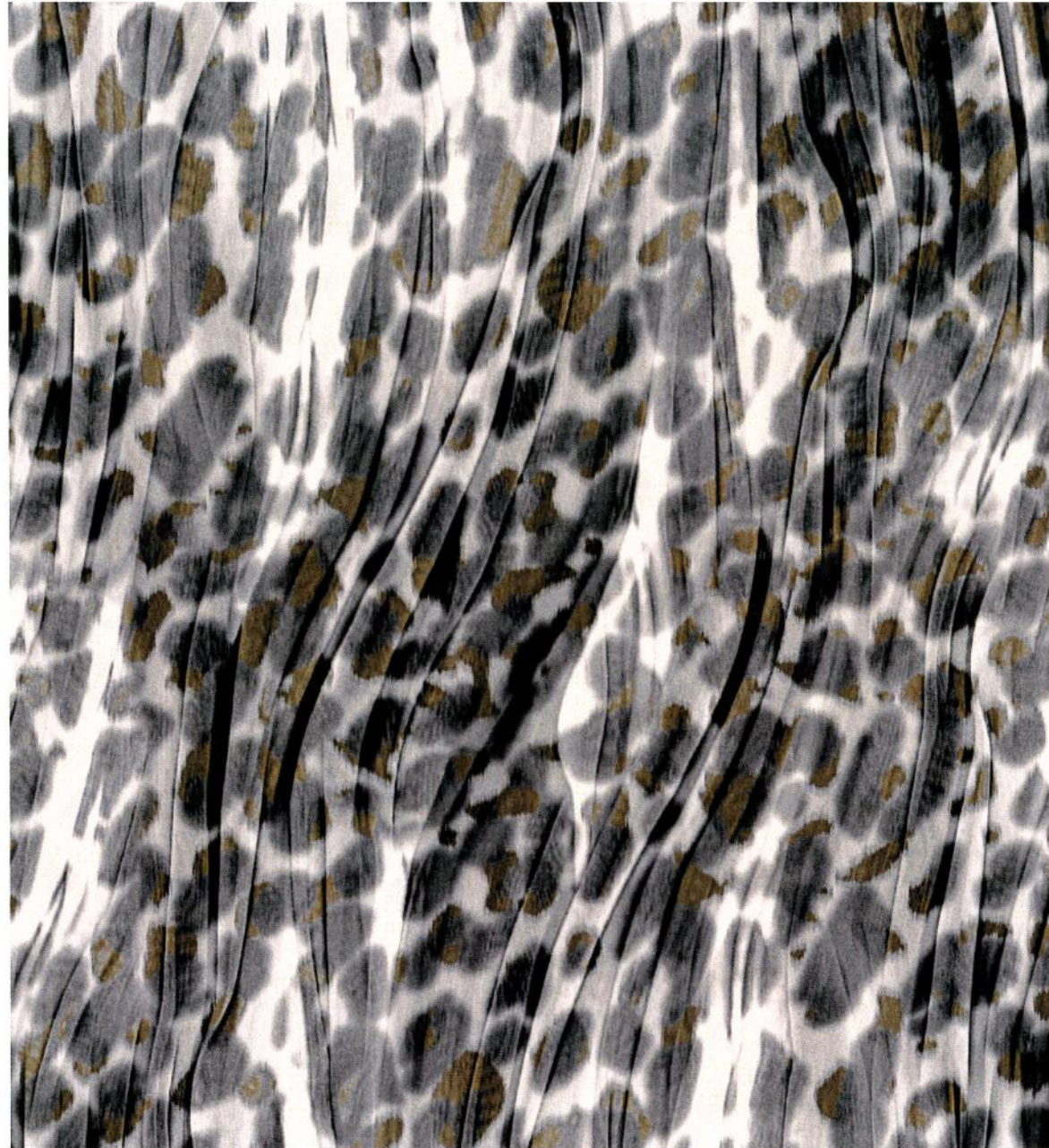
Style 41451
Price 55149059,57
063189
LG 83



Col.: 91 grey graphical

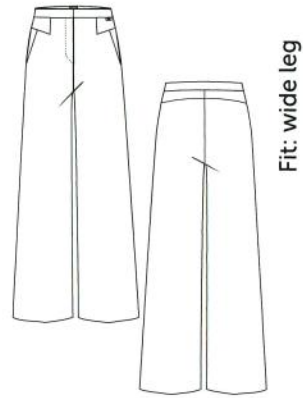
6926
Abstract Leo Print

RR
RAFFAELLO
ROSSI



Col.: 91 grey graphical

64% Polyester
34% Viscose
2% Elastane



Fit: wide leg

Xenia
Style 2448
Price 70189074,72
079239
LH/FW/SL 29/63/83



Fit: relaxed

Lisan 6/8
Style 508168
Price 63169067,65
073219
LH/FW/SL 31/46/65

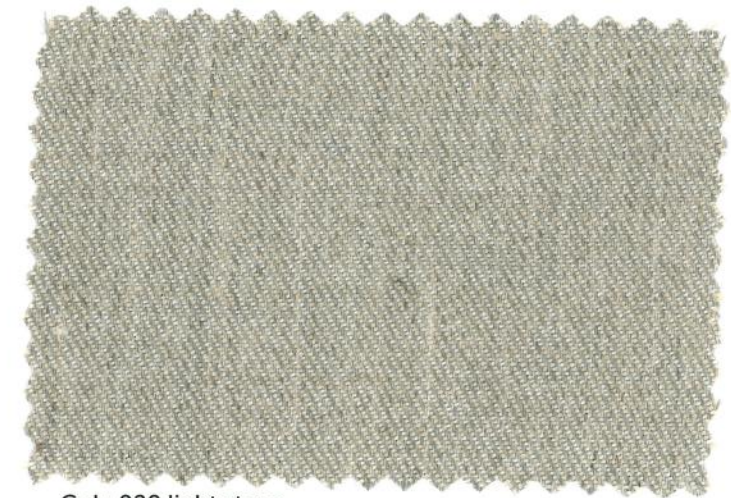


Malou
Style 1532
Price 63169067,65
073219
LH/FW/SL 34/79/34



OEKO
TEX
STANDARD
100

Vivian
Style 4141
Price 63169067,65
073219
LG 80



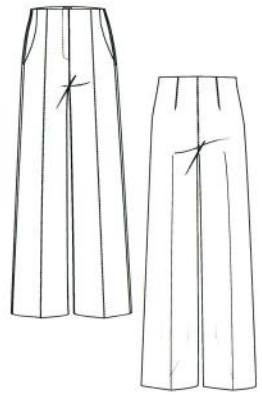
Col.: 920 light stone



Col.: 588 barolo



Col.: 970 anthracite



Fit: wide leg

Agatha

Style 27491
Price 63169067,65
073219
LH/FW/SL 29/68/83



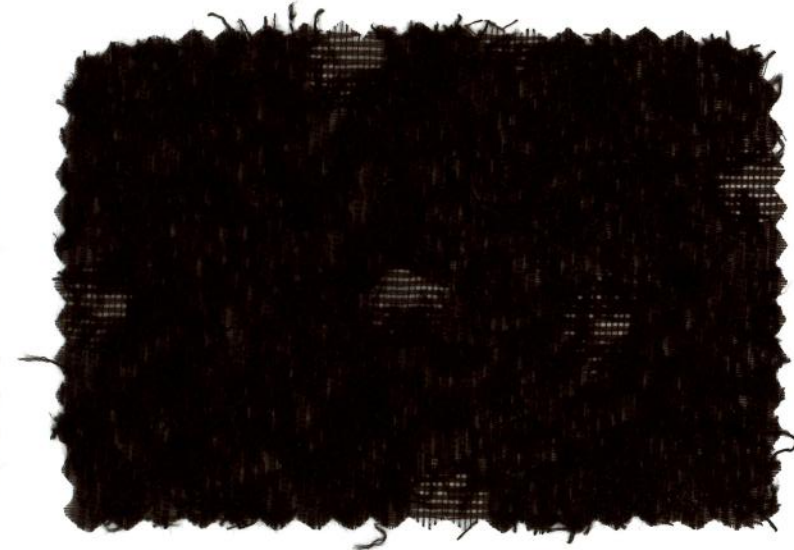
**Streichung /
Discontinued**

Jorda

Style 4145
Price 55149059,57
063189
LG 83



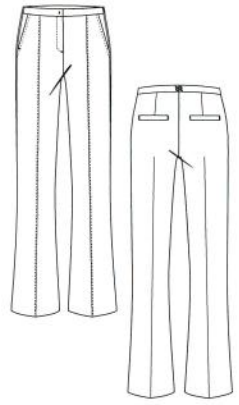
Col.: 340 chalk



Col.: 990 black

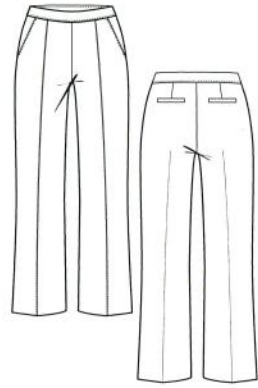
Article: 6946 Techno Flannel

63% Polyester
33% Viscose
4% Elastane



Fit: slim
KEY LOOK

Doro Flared
Style 506212
Price 70189074,72
079239
LH/FW/SL 25.5/60/83



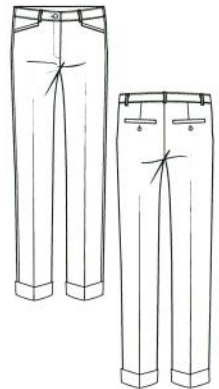
Fit: slim

Renée
Style 2530
Price 63169067,65
073219
LH/FW/SL 27/51/74



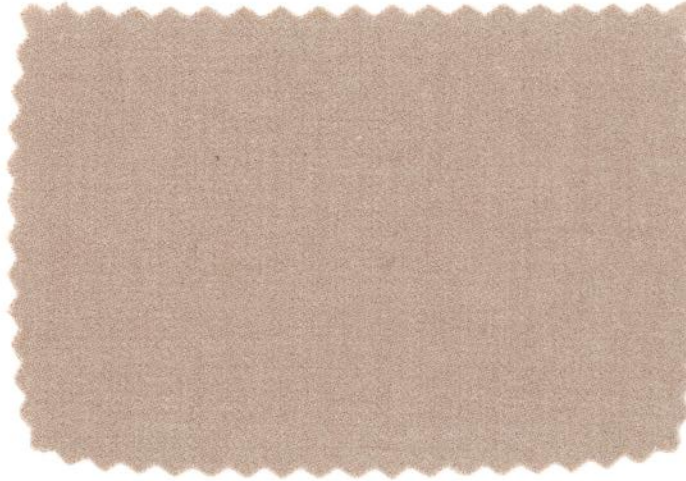
Fit: cigarette

Doro
Style 50623
Price 63169067,65
073219
LH/FW/SL 25.5/32/74



Fit: slim

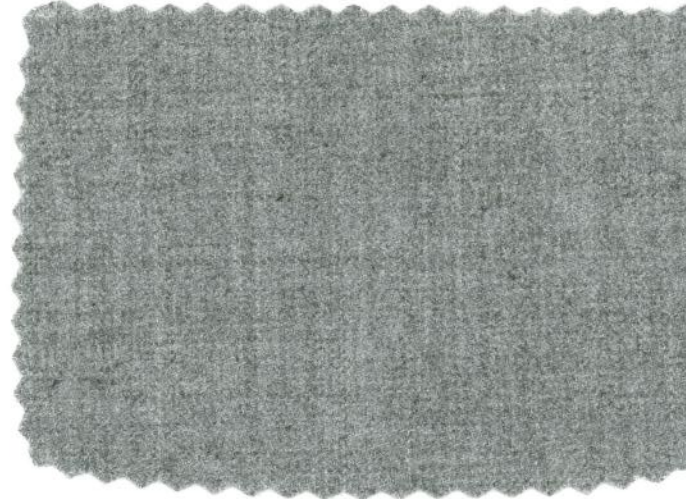
Ute 7/8
Style 229678
Price 67179071,69
076229
LH/FW/SL 23/35/70



Col.: 925 quarz



Col.: 585 burgund



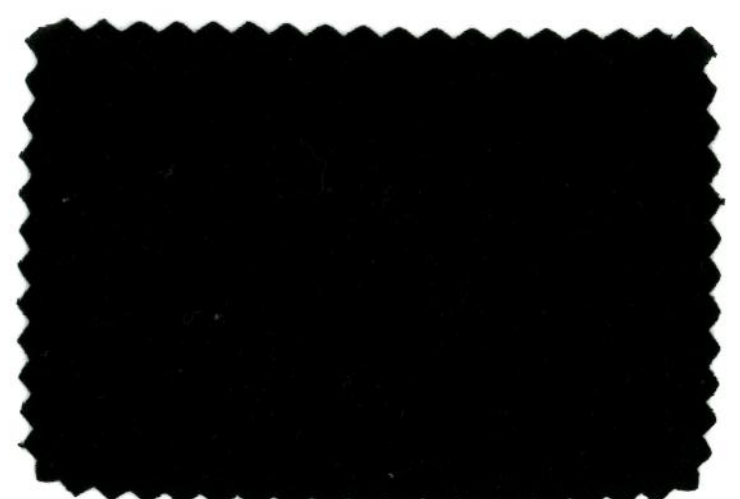
Col.: 936 marble grey



Col.: 890 navy blue

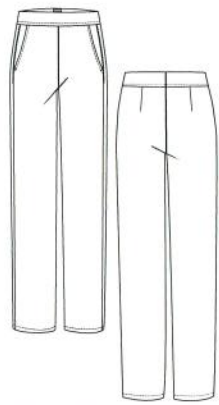


Col.: 952 dark grey



Col.: 990 black

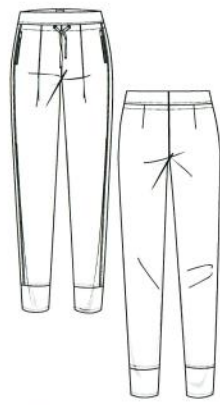
52% Polyamide
32% Polyester
16% Elastane



Fit: straight

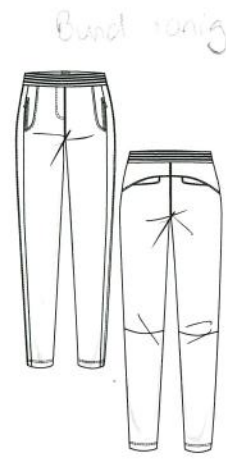


Candice Straight
Style 20571
Price 67179071,69
076229
LH/FW/SL 25/47/83



Fit: relaxed

Candy O
Style 251233
Price 74199078,76
083249
LH/FW/SL 24/26.5/76



Fit: relaxed

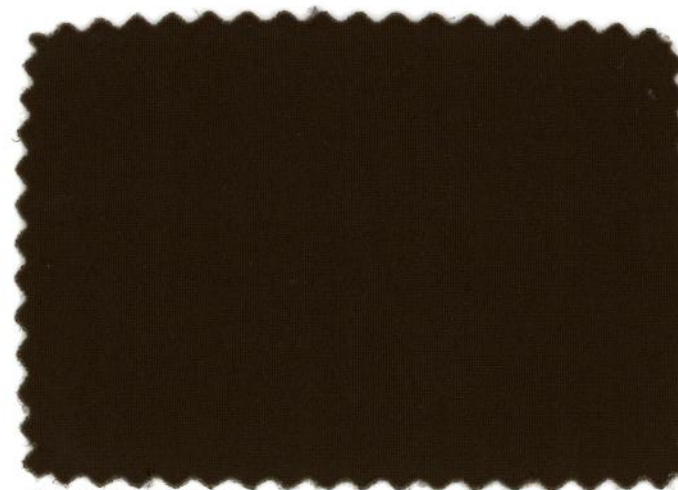
Natina Ribbon
Style 28024
Price 74199078,76
083249
LH/FW/SL 25/28/70



Col.: 585 burgund



Col.: 890 navy blue



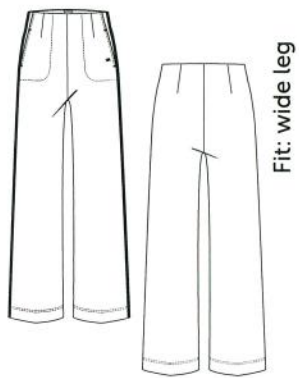
Col.: 765 dark olive



Col.: 990 black

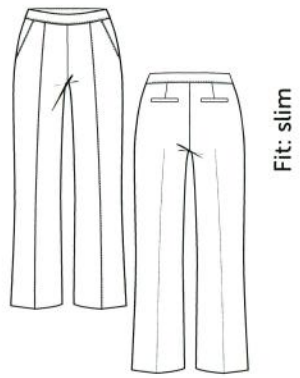
Article: 8883 Cosy Jersey

47% Polyamide
44% Viscose
9% Elastane



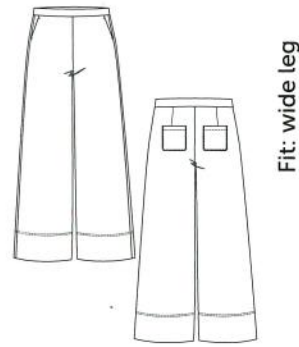
Fit: wide leg

Vika
Style 5069
Price 59159063,61
066198
LH/FW/SL 28/60/83



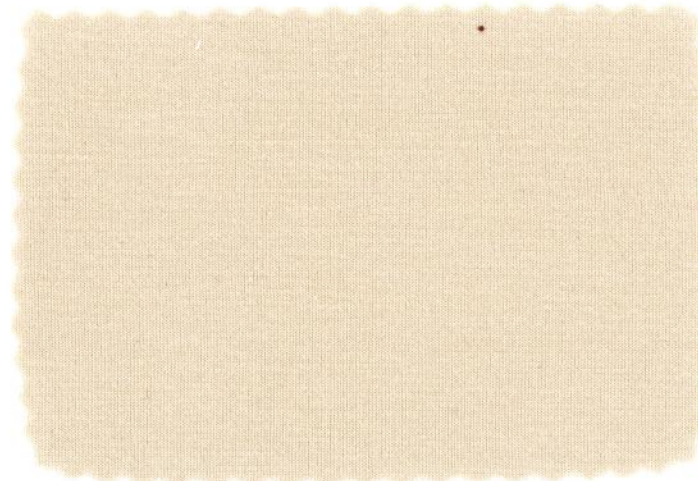
Fit: slim

Renée
Style 2530
Price 55149059,57
063189
LH/FW/SL 27/51/74



Fit: wide leg

Palina 6/8 Sport
Style 509168
Price 63169067,65
073219
LH/FW/SL 27/64/66



Col.: 345 almond milk



Col.: 948 odyssey grey

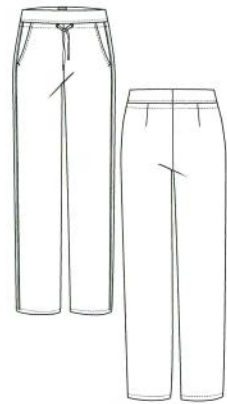


Col.: 585 burgund



Col.: 990 black

46% Viscose
33% Polyamide
16% Polyester
6% Spandex

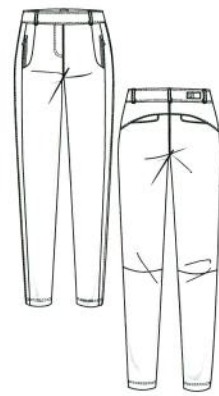


Fit: straight

Candice Straight S

Style 20572
Price 70189074,72
079239

LH/FW/SL 25/47/83

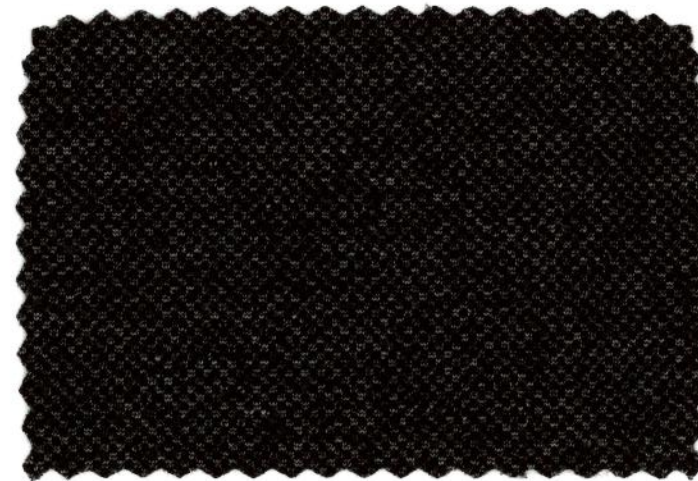


Fit: relaxed

Natina Sport

Style 28023
Price 67179071,69
076229

LH/FW/SL 25/28/70



Col.: 98 black/grey graphical

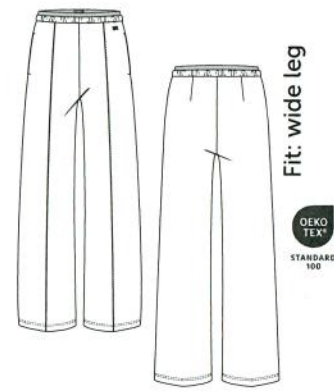
68% Polyamide
32% Elastane



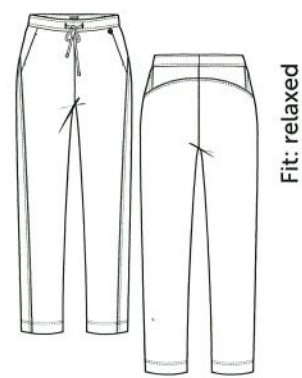
Fit: relaxed



KEY LOOK



Fit: wide leg



Fit: relaxed

Mayla Jogg
Style 20662
Price 74199078,76
083249
LH/FW/SL 32.5/53/83



Cosmea DB
Style 50701
Price 63169067,65
073219
LH/FW/SL 27/58/83

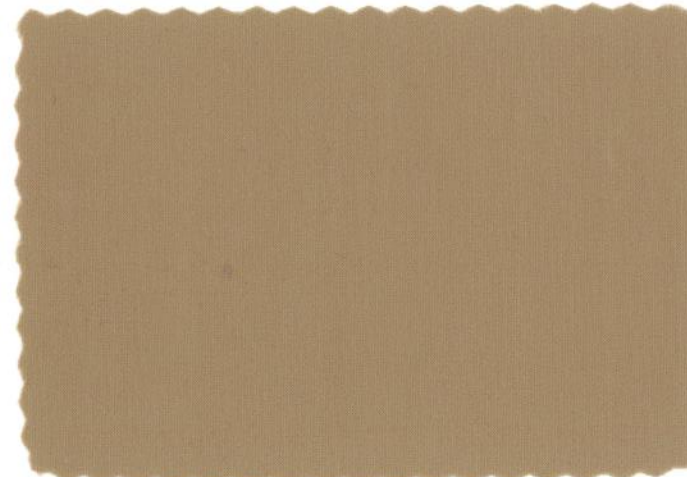


Clia
Style 5095
Price 63169067,65
073219
LH/FW/SL 27/32/74



only for color

Col.: 679 choco



Col.: 742 aloe vera



Col.: 890 navy blue



Col.: 767 moss



Col.: 990 black

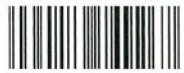
91% Polyester
9% Elastane



Fit: slim



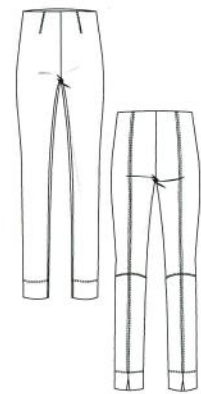
Macy
Style 2193
Price 52139056,54
059179
LH/FW/SL 25/42/81



Fit: wide leg



Elaine 7/8
Style 299378
Price 55149059,57
063189
LH/FW/SL 25/53/70



Fit: slim



Penny
Style 212978
Price 52139056,54
059179
LH/FW/SL 23/29/74



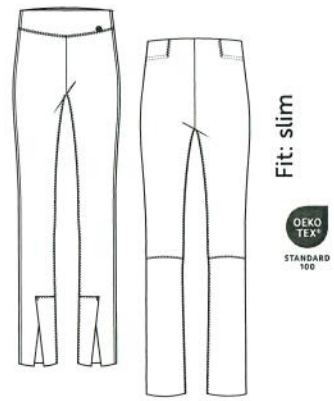
NA



Col.: 76 olive graphical



Col.: 92 light grey graphical



Fit: slim



Joana
Style 5094
Price 63169067,65
073219
LH/FW/SL 27/30/78



Fit: relaxed

Doro Sport
Style 50622
Price 74199078,76
083249
LH/FW/SL 26/32/74



Fit: slim

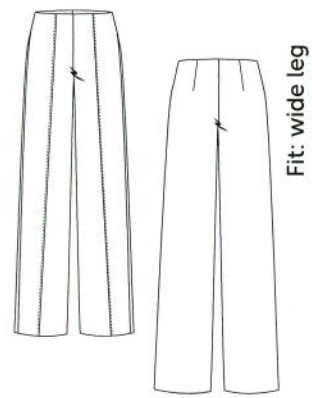


Macy P 7/8
Style 21936
Price 63169067,65
073219
LH/FW/SL 25/40/70



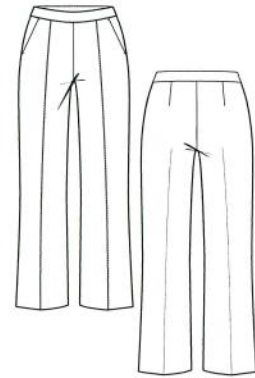
Col.: 990 black

64% Viscose
23% Polyamide
9% Polyester
4% Elastane



Fit: wide leg

Elaine
Style 2993
Price 63169067,65
073219
LH/FW/SL 25/53/80



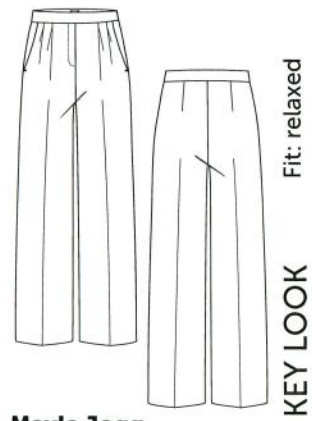
Fit: slim

Renée
Style 2530
Price 67179071,69
076229
LH/FW/SL 27/51/74



Col.: 68 brown graphical

45% Viscose
45% Polyester
8% Polyamide
2% Elastane

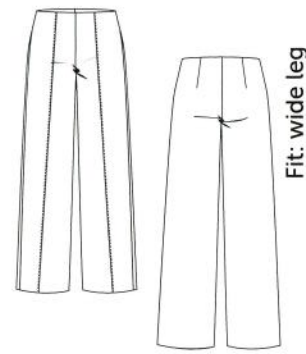


Fit: relaxed

KEY LOOK

Mayla Jogg

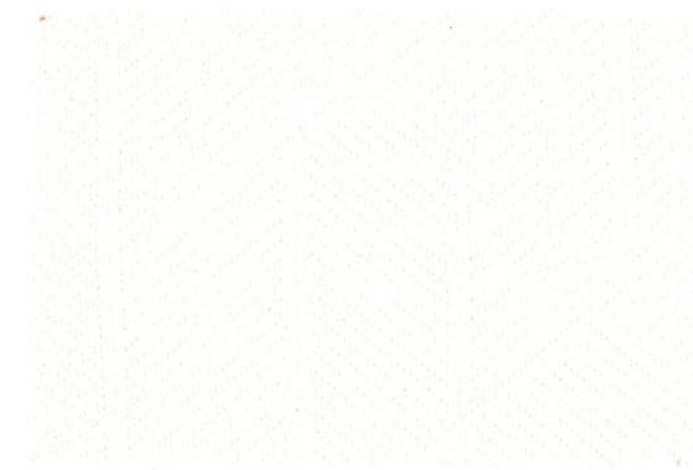
Style 20661
Price 74199078,76
083249
LH/FW/SL 32.5/57/83



Fit: wide leg

Elaine 7/8

Style 299378
Price 67179071,69
076229
LH/FW/SL 25/53/70

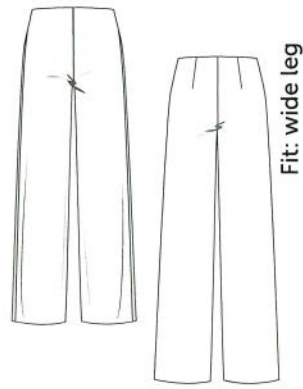


Col.: 120 offwhite



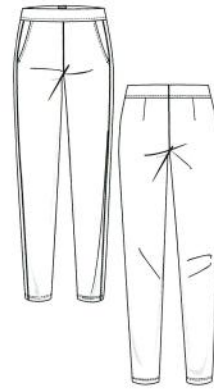
Col.: 970 anthracite

34% Polyester
25% Cotton
23% Viscose
16% Polyamide
2% Elastane



Fit: wide leg

Elaine
Style 2993
Price 63169067,65
073219
LH/FW/SL 25/53/80



Fit: relaxed

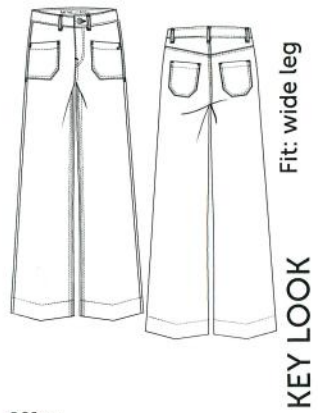
Candice O
Style 261921
Price 67179071,69
076229
LH/FW/SL 23.5/28/76



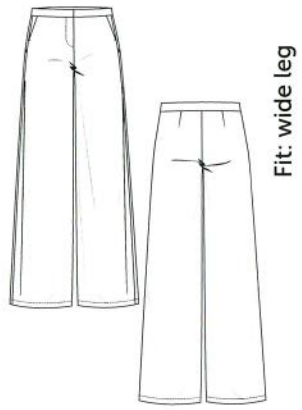
Col.: 93 dark grey graphical

Article: 9037 Soft Corduroy

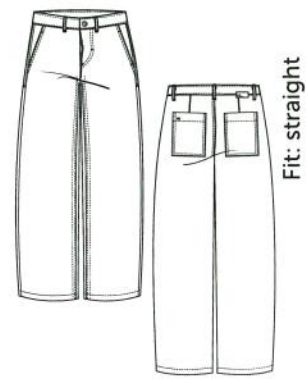
90% Polyester
8% Polyamide
2% Elastane



Miru
Style 2078
Price 67179071,69
076229
LH/FW/SL 28/60/83



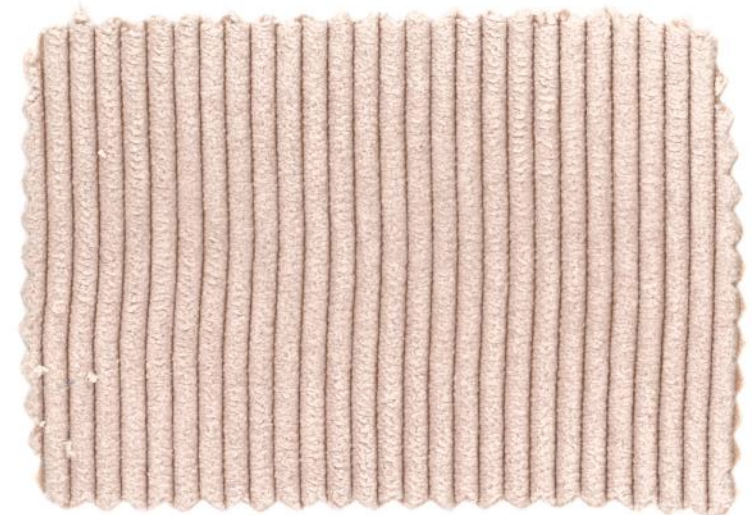
Palina R Long
Style 261021
Price 67179071,69
076229
LH/FW/SL 27/55/81



Yuki
Style 50551
Price 70189074,72
079239
LH/FW/SL 29/52/74



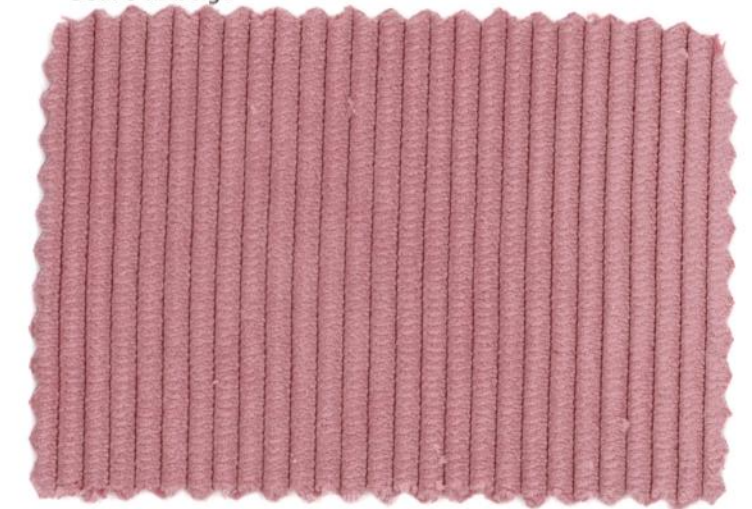
Col.: 717 pea green



Col.: 342 beige



Col.: 873 eclipse blue



Col.: 516 primrose



Col.: 650 nut



Col.: 953 new taupe



Col.: 588 barolo

91% Polyester
9% Elastane



Mayla
Style 2066
Price 63169067,65
073219
LH/FW/SL 32.5/57/83



Linya
Style 5096
Price 63169067,65
073219
LH/FW/SL 29/48/81



Violet 7/8
Style 254878
Price 59159063,61
066198
LH/FW/SL 27/36/70



Mayla 6/8
Style 206668
Price 63169067,65
073219
LH/FW/SL 32.5/48/67



Palina 6/8 R
Style: 26102
Price: 055149059.57
LH/FW/SL: 27/55/68



Col.: 890 navy blue



Col.: 649 dark chocolate



Col.: 990 black

WE ARE ON THE WAY TO GO BEYOND

RAFFAELLO ROSSI X SUSTAINABILITY

WE ARE
ON THE
WAY

Immer einen Schritt weiter. Immer in Bewegung. Der Wandel ist unsere Konstante. Neue Maßstäbe setzen. Besser werden. Angetrieben von Kreativität und Innovationsgeist. Uns ist unser Handeln bewusst. Wir stellen Fragen. Wir halten nicht inne. Wir möchten bekannte Pfade verlassen, um über sie hinauszugehen. Wir möchten die Welt zu einem besseren Ort machen. Wir wachsen an unseren Herausforderungen und begegnen ihnen voller Optimismus. Pro verkaufte Jeans unterstützen wir soziale und ökologische Projekte. Mehr dazu erfahren Sie hier: raffaello-rossi.de/sustainability/projects

New beginnings. We are far from being perfect. Nevertheless, this is our incentive and our motivation. We are on the way. We question our actions every day and go in search of better solutions, to redefine the sustainability standards in the premium fashion segment. We support social and ecological projects for every pair of jeans sold. You can find out more about this here: raffaello-rossi.de/sustainability/projects



Unsere Denimproduktionsstätten sind Mitglied des SEDEX Ethical Trade Audits (SMETA). Die Produktionsstätten werden auf der Grundlage des Standards der Organisation in den Bereichen Arbeit, Gesundheit und Sicherheit, Umwelt und Geschäftsethik geprüft und bewertet. Dadurch kann die Einhaltung von sozialen Standards gewährleistet werden. Zudem haben die Wäschereien eigene Wasserreinigungssysteme.

Our denim production sites are members of the SEDEX Ethical Trade Audit (SMETA). Production sites are audited and evaluated based on the organization's standard in the areas of labor, health and safety, environment and business ethics. This helps to ensure compliance with social standards. In addition, the laundries have their own water purification systems.



Wir sehen uns in der Verantwortung den Anbau nachhaltiger Baumwolle zu unterstützen. Deshalb sind wir seit 2021 stolzes Mitglied bei Better Cotton. Gemeinsam setzen wir uns für die Verbesserung der Baumwollanbaumethoden weltweit ein. Wir haben uns verpflichtet, bis 2026 mindestens 50% unserer Baumwolle als Better Cotton zu beziehen. Ein Ziel, welches wir schon in 2022 erreicht haben. Mit dem Kauf einer Raffaello Rossi Hose unterstützen Sie unser Engagement für mehr nachhaltige Baumwolle. Better Cotton wird über ein System der Massenbilanz beschafft und ist nicht physisch bis zum Endprodukt rückverfolgbar. Einzelheiten finden Sie unter raffaello-rossi.de/sustainability/bci

We see ourselves in the responsibility to support the cultivation of sustainable cotton. That is why we have been a proud member of Better Cotton since 2021. Together, we are committed to improving cotton farming practices worldwide. We have pledged to sourcing at least 50% of our cotton as Better Cotton by 2026. A goal, which we have already achieved in 2022. By purchasing a pair of Raffaello Rossi pants, you are supporting our commitment to more sustainable cotton. Better Cotton is sourced through a mass balance system and is not physically traceable to the final product. For details, visit raffaello-rossi.de/sustainability/bci

 RAFFAELLO ROSSI

PREMIUM DENIM

Article: 9369 Rich Soft Denim

80% Cotton
15% Lyocell
3% Elastomultiester



11 oz



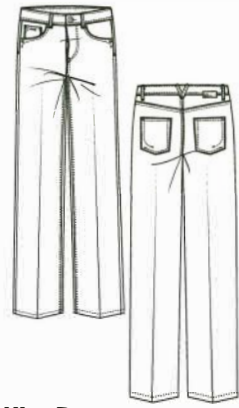
garment washed

TENCEL™

TENCEL™ Lyocellfasern haben sich einen guten Ruf für ihr umweltfreundliches, geschlossenes Produktionsverfahren erworben, das Zellstoff in Zellulosefasern mit hoher Ressourceneffizienz und geringer Umweltbelastung umwandelt. Bei diesem Lösungsmittelspinnverfahren wird das Prozesswasser recycelt und das Lösungsmittel mit einer Rückgewinnungsrate von über 99 % wiederverwendet. Die Verbraucher können sich darauf verlassen, dass ihre modischen Entscheidungen nicht zu einer Beeinträchtigung der Umwelt führen.

TENCEL™ Lyocell fibers have gained a commendable reputation for their environmentally responsible, closed loop production process, which transforms wood pulp into cellulosic fibers with high resource efficiency and low environmental impact. This solvent-spinning process recycles process water and reuses the solvent at a recovery rate of more than 99%. Consumers can have the assurance that their fashion choices are not contributing to an adverse impact on the environment.

Only Col.: 867, 975



Fit: straight

Kira B
Style 281793
Price 59159063,61
066198
LH/FW/SL 25.5/48/83



Only Col.: 890



Fit: slim

Nella
Style 5080
Price 63169067,65
073219
LH/FW/SL 25/60/83



Only Col.: 975



Fit: wide leg

KEY LOOK

Sventy R
Style 20261
Price 74199078,76
083249
LH/FW/SL 27,5/64/83



Only Col.: 880, 960

Only Col.: 885, 960



Fit: o-shape

KEY LOOK

Hanni 7/8
Style 505378
Price 63169067,65
073219
LH/FW/SL 30/40/70



Only Col.: 975



Fit: wide leg

KEY LOOK

Sventy
Style 2026
Price 67179071,69
076229
LH/FW/SL 28/64/83



Miru 6/8
Style 207868
Price 63169067,65
073219
LH/FW/SL 28/58/68



Col.: 859 mid vintage wash



Col.: 867 used blue



Col.: 890 navy blue



Col.: 880 midnight blue



Col.: 960 grey



Col.: 885 brown blue



Col.: 975 authentic grey

Delivery date: 15.07.2025 - 31.08.2025

A/W 2025

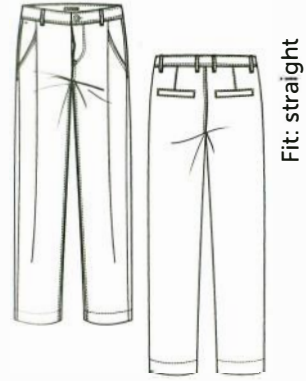
Article: 9373 Authentic Stretch Denim

94% Cotton
4% Polyester
2% Elastane



10,5 oz garment washed

Only Col.: 861



Fit: straight

Jany
Style 5098
Price 67179071,69
076229
LH/FW/SL 31.5/45/75



Only Col.: 861



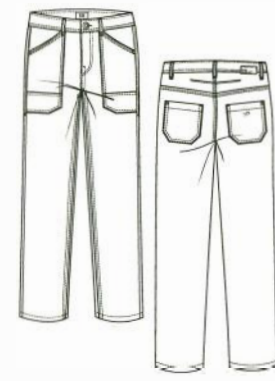
Fit: wide leg

KEY LOOK

Sventy Stitch 6/8
Style 202621
Price 67179071,69
076229
LH/FW/SL 27.5/64/68



Only Col.: 848



Fit: straight

Lani 7/8
Style 531478
Price 63169067,65
073219
LH/FW/SL 30/42/72



Only Col.: 848



Fit: slim

Vic 6/8 Cropped
Style 220268
Price 59159063,61
066198
LH/FW/SL 24/43/68



Col.: 861 used blue



Col.: 848 authentic blue

Article: 9378 Slouchy Denim

49% Cotton
40% Lyocell
9% Polyester
2% Elastane



10 oz garment washed



Fit: wide leg

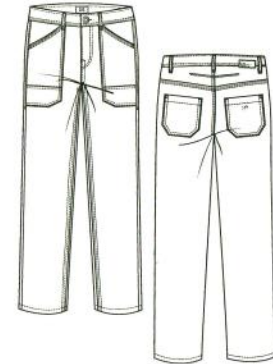
Sena
Style 20267
Price 70189074,72
079239
LH/FW/SL 28/70/83



Fit: wide leg

KEY LOOK

Miru 6/8
Style 207868
Price 67179071,69
076229
LH/FW/SL 28/58/68



Fit: straight

Lani 7/8
Style 531478
Price 67179071,69
076229
LH/FW/SL 30/52/72



Col.: 875 dark blue

TENCEL™



Feels so right

TENCEL™ Lyocellfasern haben sich einen guten Ruf für ihr umweltfreundliches, geschlossenes Produktionsverfahren erworben, das Zellstoff in Zellulosefasern mit hoher Ressourceneffizienz und geringer Umweltbelastung umwandelt. Bei diesem Lösungsmittelspinnverfahren wird das Prozesswasser recycelt und das Lösungsmittel mit einer Rückgewinnungsrate von über 99 % wiederverwendet. Die Verbraucher können sich darauf verlassen, dass ihre modischen Entscheidungen nicht zu einer Beeinträchtigung der Umwelt führen.

TENCEL™ Lyocell fibers have gained a commendable reputation for their environmentally responsible, closed loop production process, which transforms wood pulp into cellulosic fibers with high resource efficiency and low environmental impact. This solvent-spining process recycles process water and reuses the solvent at a recovery rate of more than 99%. Consumers can have the assurance that their fashion choices are not contributing to an adverse impact on the environment.

Article: 9379 Golden Lurex Denim

62% Cotton
32% Viscose
4% Polyester
2% Polyamide



9,5 oz garment washed



Fit: wide leg

KEY LOOK

Sventy Belt

Style 20265
Price 74199078,76
083249
LH/FW/SL 28/65/83



Col.: 888 darkblue

Only Col.: 890



Fit: wide leg

KEY LOOK

Sventy B

Style 20264
Price 67179071,69
076229
LH/FW/SL 27.5/64/83



Only Col.: 865



Fit: straight

Arin

Style 5315
Price 63169067,65
073219
LH/FW/SL 29/40/75



Only Col.: 865



Miru Skirt

Style 4144
Price 55149059,57
063189
LG 90



Only Col.: 890



Lima

Style 1610
Price 55149059,57
063189
LG 60



Col.: 865 authentic



Col.: 890 navy blue

TENCEL™

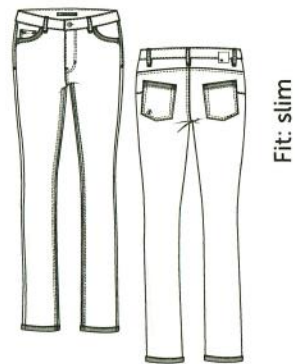


TENCEL™ Lyocellfasern haben sich einen guten Ruf für ihr umweltfreundliches, geschlossenes Produktionsverfahren erworben, das Zellstoff in Zellulosefasern mit hoher Ressourceneffizienz und geringer Umweltbelastung umwandelt. Bei diesem Lösungsmittelspinnverfahren wird das Prozesswasser recycelt und das Lösungsmittel mit einer Rückgewinnungsrate von über 99 % wiederverwendet. Die Verbraucher können sich darauf verlassen, dass ihre modischen Entscheidungen nicht zu einer Beeinträchtigung der Umwelt führen.

TENCEL™ Lyocell fibers have gained a commendable reputation for their environmentally responsible, closed loop production process, which transforms wood pulp into cellulosic fibers with high resource efficiency and low environmental impact. This solvent-spinning process recycles process water and reuses the solvent at a recovery rate of more than 99%. Consumers can have the assurance that their fashion choices are not contributing to an adverse impact on the environment.



Hanni 7/8
Style 505378
Price 63169067,65
073219
LH/FW/SL 30/40/70



Suzy Pip
Style 547013
Price 59159063,61
066198
LH/FW/SL 23/32/74



Lima
Style 1610
Price 55149059,57
063189
LG 60

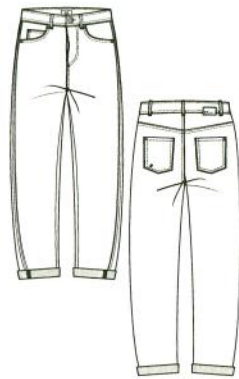


Col.: 885 brown blue

92% Cotton
6% Elastomultiester
2% Elastane



9,75 oz garment washed



Fit: o-shape

KEY LOOK

Hanni 7/8

Style 505317
Price 70189074,72
079239

LH/FW/SL 30/40/70



Streichung | Discontinued



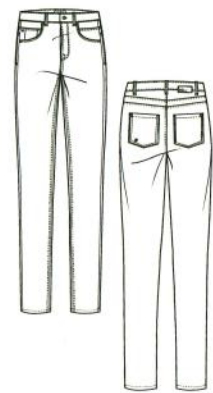
Col.: 98 black/grey graphical

Article: 9432 Highstretch Denim

86% Cotton
10% Polyester
4% Elastane



10,5 oz garment washed



Fit: slim



Amal
Style 28129
Price 55149059,57
063189
LH/FW/SL 24.5/28/78



Only Col.: 889



Fit: slim

Suzy
Style 54704
Price 55149059,57
063189
LH/FW/SL 23/32/74



Col.: 875 dark blue



Col.: 889 dark blue



Col.: 999 black

Article: 9438 Soft Touch Denim

79% Cotton
11% Polyester
8% Lyocell
2% Elastane



8 1/4 oz



Fit: wide leg

Sventy B
Style 20264
Price 059159063.61

LH/FW/SL 27,5/64/83



Col.: 850 blue-blue



Col.: 890 navy blue

TENCEL™



Feels so right™

TENCEL™ Lyocellfasern haben sich einen guten Ruf für ihr umweltfreundliches, geschlossenes Produktionsverfahren erworben, das Zellstoff in Zellulosefasern mit hoher Ressourceneffizienz und geringer Umweltbelastung umwandelt. Bei diesem Lösungsmittelspinnverfahren wird das Prozesswasser recycelt und das Lösungsmittel mit einer Rückgewinnungsrate von über 99 % wiederverwendet. Die Verbraucher können sich darauf verlassen, dass ihre modischen Entscheidungen nicht zu einer Beeinträchtigung der Umwelt führen.

TENCEL™ Lyocell fibers have gained a commendable reputation for their environmentally responsible, closed loop production process, which transforms wood pulp into cellulosic fibers with high resource efficiency and low environmental impact. This solvent-spinning process recycles process water and reuses the solvent at a recovery rate of more than 99%. Consumers can have the assurance that their fashion choices are not contributing to an adverse impact on the environment.

Article: 9443 Ring Stretch Denim

92% Cotton
6% Polyester
2% Elastane



11,5 oz garment washed

Only Col.: 875, 980



Fit: slim



Vic Flared

Style 2081
Price 55149059,57
063189
LH/FW/SL 24/52/85



Only Col.: 99



Fit: slim



Vic Flared L

Style 20813
Price 67179071,69
076229
LH/FW/SL 24/52/85



Only Col.: 859



Fit: straight

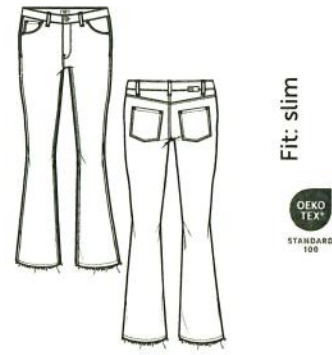


Kira 6/8 T

Style 281723
Price 63169067,65
073219
LH/FW/SL 25,5/46/66



Only Col.: 875, 980



Fit: slim



Vic 6/8 Cropped

Style 220268
Price 52139056,54
059179
LH/FW/SL 24/43/66



Only Col.: 965



Fit: slim



Vic 6/8 Cropped D

Style 220269
Price 63169067,65
073219
LH/FW/SL 24/43/68



Only Col.: 99



Fit: o-shape



Hanni 7/8 L

Style 505378
Price 67179071,69
076229
LH/FW/SL 30/40/70



KEY LOOK

Only Col.: 847, 890



Fit: slim



Suzy

Style 54704
Price 55149059,57
063189
LH/FW/SL 23/32/74



NOS
I'm on stock

Only Col.: 965



Fit: slim



Suzy T

Style 547013
Price 63169067,65
073219
LH/FW/SL 23/32/74



Col.: 847 jeans blue



Col.: 890 navy blue



Col.: 859 mid vintage wash



Col.: 965 graphite



Col.: 875 dark blue



Col.: 980 asphalt

Col.: 99 black graphical

Delivery date: 15.06.2025 - 31.07.2025

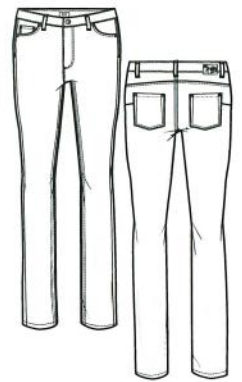
A/W 2025

TENCEL™



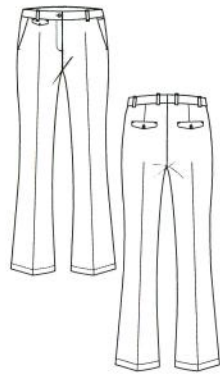
TENCEL™ Lyocellfasern haben sich einen guten Ruf für ihr umweltfreundliches, geschlossenes Produktionsverfahren erworben, das Zellstoff in Zellulosefasern mit hoher Ressourceneffizienz und geringer Umweltbelastung umwandelt. Bei diesem Lösungsmittelspinnverfahren wird das Prozesswasser recycelt und das Lösungsmittel mit einer Rückgewinnungsrate von über 99 % wiederverwendet. Die Verbraucher können sich darauf verlassen, dass ihre modischen Entscheidungen nicht zu einer Beeinträchtigung der Umwelt führen.

TENCEL™ Lyocell fibers have gained a commendable reputation for their environmentally responsible, closed loop production process, which transforms wood pulp into cellulosic fibers with high resource efficiency and low environmental impact. This solvent-spinning process recycles process water and reuses the solvent at a recovery rate of more than 99%. Consumers can have the assurance that their fashion choices are not contributing to an adverse impact on the environment.



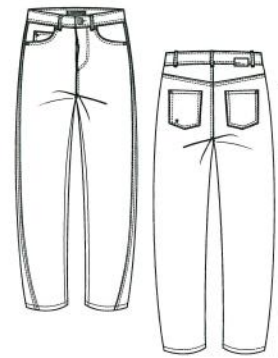
Fit: slim

Suzy
 Style 54704
 Price 63169067,65
 073219
 LH/FW/SL 23.5/33/74



Fit: slim

Dorain 7/8
 Style 253678
 Price 67179071,69
 076229
 LH/FW/SL 24.5/41/68



Fit: o-shape

Hanni 7/8
 Style 505378
 Price 67179071,69
 076229
 LH/FW/SL 30/40/68

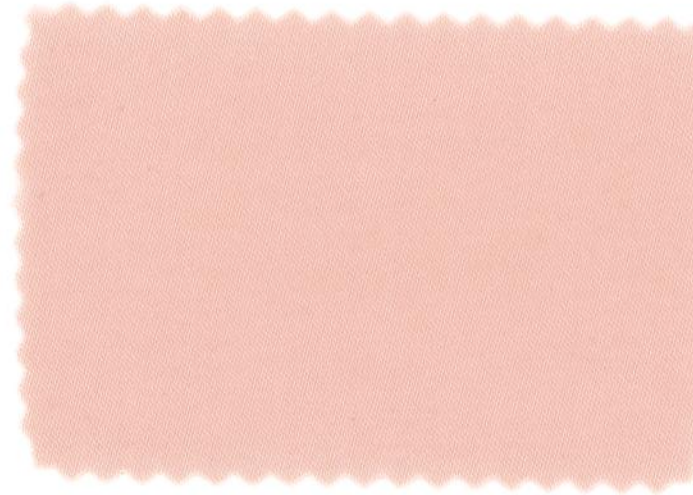


KEY LOOK

Col.: 310 seashell

Article: 9564 Highstretch Cotton

40% Lyocell
 28% Micro Modal
 17% Cotton
 12% Elastomultiester
 3% Elastane



Col.: 514 dusty peach



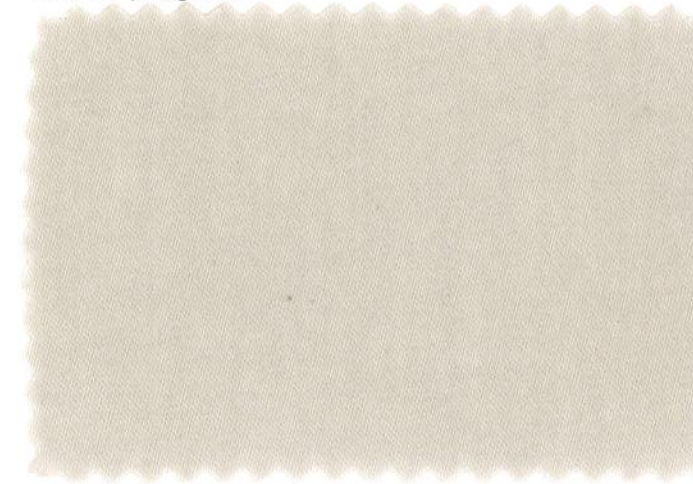
Col.: 742 aloe vera



Col.: 717 pea green



Col.: 767 moss



Col.: 922 light silver



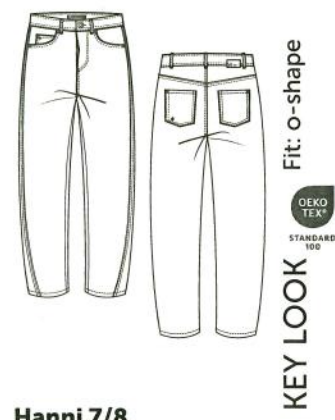
Col.: 990 black



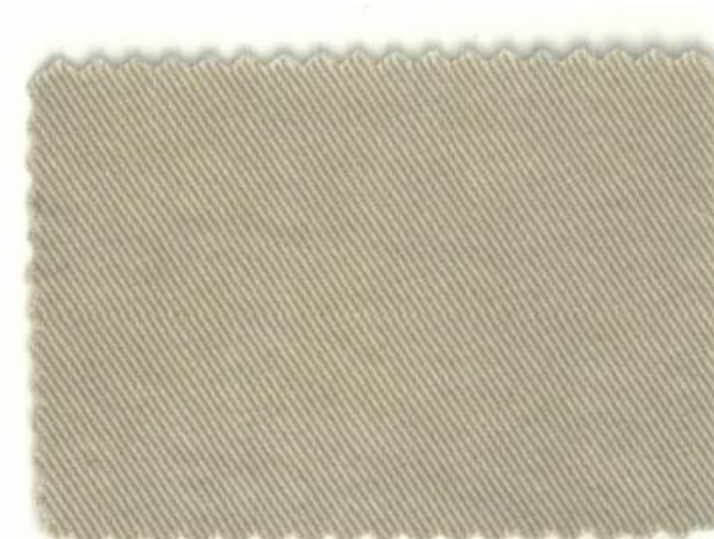
Sventy
Style 2026
Price 67179071,69
076229
LH/FW/SL 27/65/83



Lani 7/8
Style 531478
Price 67179071,69
076229
LH/FW/SL 30/42/72



Hanni 7/8
Style 505378
Price 67179071,69
076229
LH/FW/SL 30/40/68



Col.: 345 almond milk



Col.: 873 eclipse blue



Col.: 649 dark chocolate



Col.: 967 midnight grey

73% Polyamide
27% Elastane



Marlie
Style 1608
Price 39099043,41
046139
LG 62



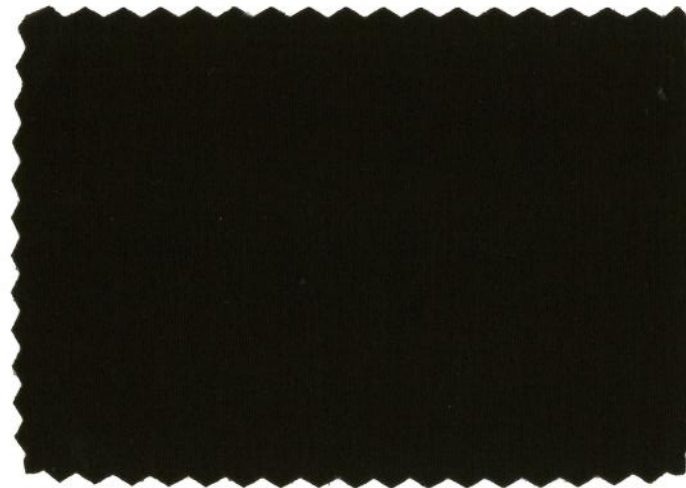
Amrei
Style 1609
Price 44119048,46
053159
LG 66



Col.: 340 chalk



Col.: 890 navy blue

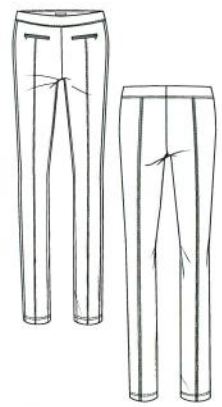


Col.: 765 dark olive



Col.: 990 black

73% Polyamide
27% Elastane



Fit: slim



NOS
I'm on stock

Otti
Style 2295
Price 63169067,65
073219
LH/FW/SL 23/30/78



Fit: slim

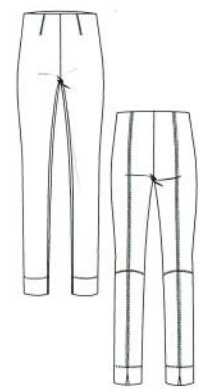


Fit: slim



NOS
I'm on stock

Renée
Style 2530
Price 63169067,65
073219
LH/FW/SL 27/51/74

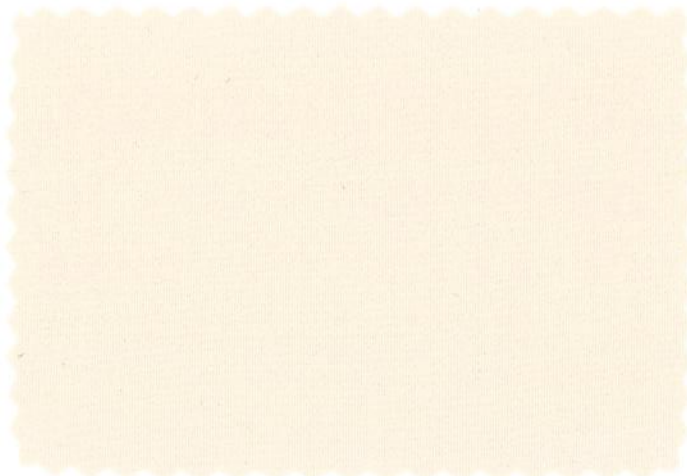


Fit: slim



NOS
I'm on stock

Penny
Style 212978
Price 52139056,54
059179
LH/FW/SL 23/29/74



Col.: 310 seashell



Col.: 614 toffee



Col.: 765 dark olive



Col.: 647 brownie



Col.: 890 navy blue

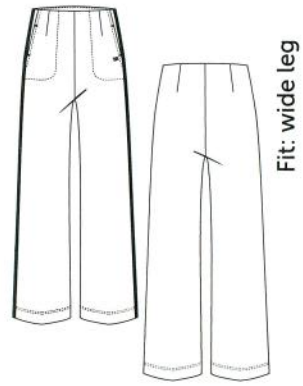


Col.: 690 darkbrown



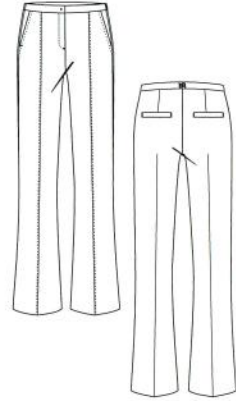
Col.: 990 black

67% Viscose
28% Polyamide
5% Elastane



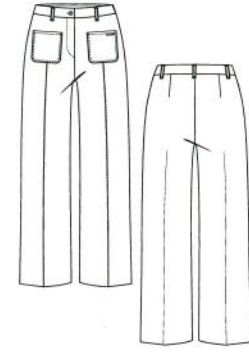
Fit: wide leg

Vika S
Style 50691
Price 70189074,72
079239
LH/FW/SL 28/60/83



Fit: slim

Doro Flared
Style 506212
Price 63169067,65
073219
LH/FW/SL 25.5/60/83

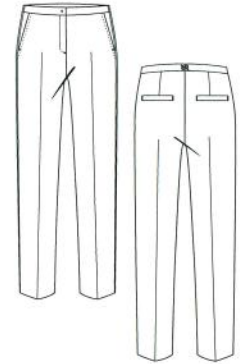


Fit: straight

Miley
Style 5323
Price 59159063,61
066198
LH/FW/SL 25.5/52/75

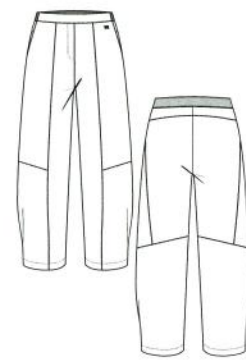


KEY LOOK



Fit: cigarette

Doro
Style 50623
Price 55149059,57
063189
LH/FW/SL 25.5/32/74



Fit: o-shape

Hale 7/8
Style 24462
Price 63169067,65
073219
LH/FW/SL 31/50/68

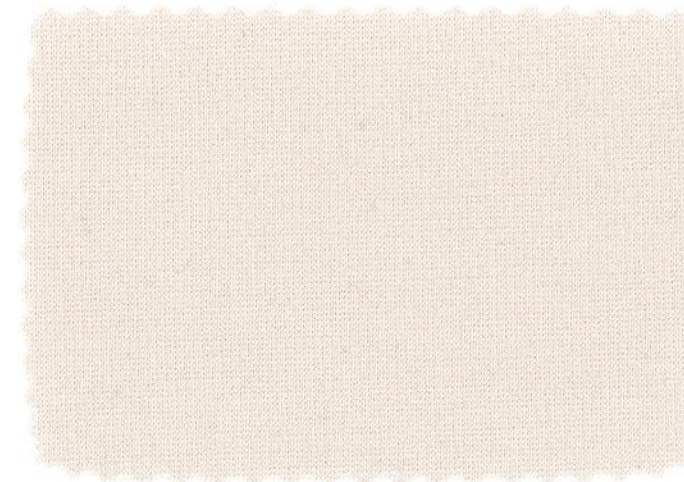


Only Col.:

- 680
- 890
- 970
- 990



Col.: 680 tabac



Col.: 330 dune



Col.: 890 navy blue

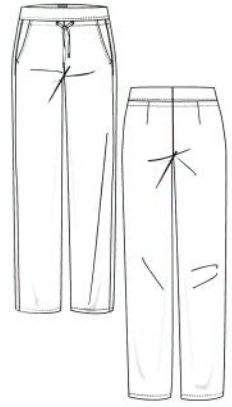


Col.: 970 anthracite



Col.: 990 black

68% Polyamide
32% Elastane



Fit: straight

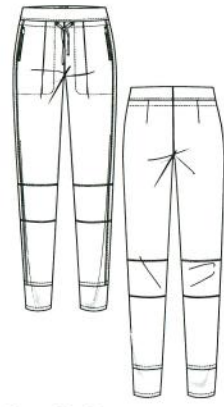


NOS
I'm on stock

Candice Straight
Style 2057
Price 55149059,57
063189
LH/FW/SL 25/47/83

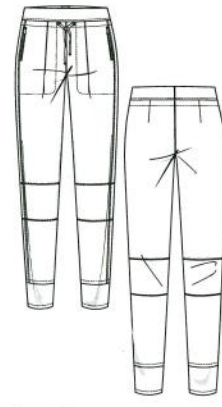


Only Col.: 990 black



Fit: relaxed

Candy G
Style 251271
Price 67179071,69
076229
LH/FW/SL 24/26.5/74

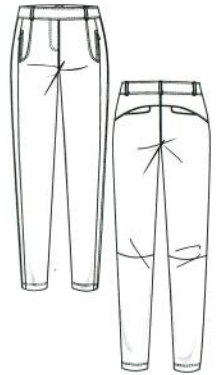


Fit: relaxed



NOS
I'm on stock

Candy
Style 251278
Price 59159063,61
066198
LH/FW/SL 24/26.5/74



Fit: relaxed



Grazia
Style 16051
Price 33089037,35
039119
LG 60,5



Natina Sport
Style 28023
Price 63169067,65
073219
LH/FW/SL 25/28/70



Col.: 340 chalk



Col.: 770 oliv



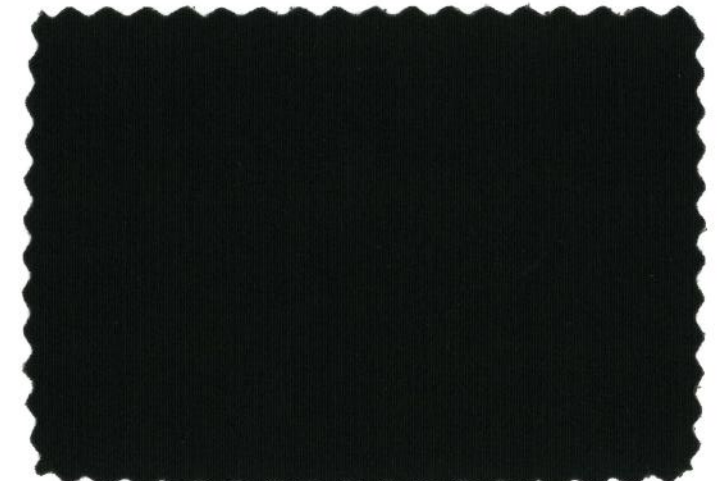
Col.: 570 bordeaux



Col.: 765 dark olive



Col.: 585 burgund



Col.: 955 slate

Article: 9987 Hightech Jersey

RR RAFFAELLO ROSSI

68% Polyamide
32% Elastane



Col.: 690 darkbrown



Col.: 890 navy blue



Col.: 990 black