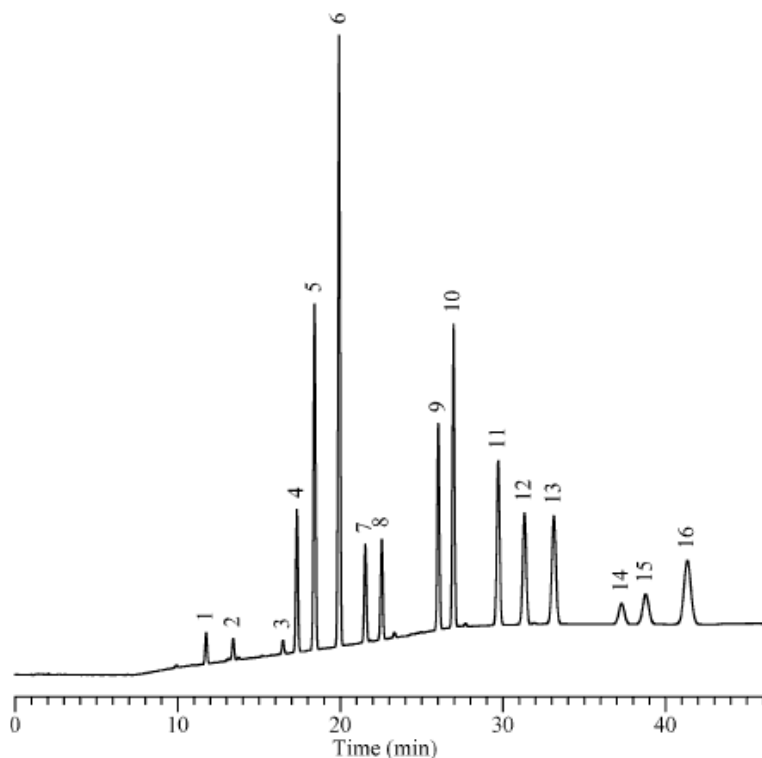


## Polycyclic aromatic hydrocarbons

Data No. LA336-0000



Column	:Inertsil ODS-P 5µm 250×4.6mmI.D.	Solutes	: 1. Naphthalene 2. Acenaphthylene 3. Acenaphthene 4. Fluorene 5. Phenanthrene 6. Anthracene 7. Fluoranthrene 8. Pyrene 9. Benzo-[a]-anthracene 10. Chrysene 11. Benzo-[b]-fluoranthrene 12. Benzo-[k]-fluoranthrene 13. Benzo-[a]-pyrene 14. Dibenzo-[a]-pyrene 15. Benzo-[ghi]-pyrene 16. Indeno-[1,2,3-CD]-pyrene each 10ng/mL in Methanol
Column Cat. No.	:		
Eluent	:A: Methanol:water=70:30 B: Methanol A/B = 100/0 - (5min) - 100/0 - (20min) - 0/100		
Flow rate	:1.0mL/min		
Col. Temp.	:40°C		
Detection	:UV 254 nm		
Injection Vol.	:		
Sample	:PAH mixture SRM 1647a		