

GROUNDWORKS

Landscape Contractors Association
MD.DC.VA | May 2026



lcamddcva.org

Table of Contents

President’s Message	3
Maryland Green Industries Council (MaGIC)	9
Approach to Labor and Mowing	10
Update on Gas-Powered Equipment Bans	13
Managing the Spring Crunch: A Smarter Excellence in Landscape Awards	16
Past Event’s Gallery	52



GROUNDWORKS, the official publication of the Landscape Contractors Association, MD•DC•VA, is published by LCA.

201 N Union St, Ste 110, Alexandria, VA 22314 | E: lca@lcamddcva.org W: www.lcamddcva.org.

Copyright © 2026: Landscape Contractors Association, MD•DC•VA.
Reproduction of any material allowed only with prior written permission from LCA.



President's Message

Zack Kline
LCA President | 2025-2026

Dear colleagues,

LCA continues to move forward because you continue to move the industry forward. Across DC, Maryland, and Virginia, we are seeing strong momentum, from sustainable projects to evolving workforce needs and a growing focus on outdoor spaces built to last. We remain focused on supporting members with practical education, resources, and connections. Over the past year, we have expanded professional development opportunities that reflect today's realities. These include the Sustainability Symposium, additional on-demand learning, and our first-ever online Foremanship Training, offered in Spanish. Our goal is to help members build strong teams and resilient businesses.

We are also introducing new opportunities for members to connect and engage. This year, LCA will be launching a Golf Tournament in September, offering a relaxed setting for members to build relationships and connect with peers. We are also planning a robust Annual Meeting, combining all our past events (Sustainability Symposium, Foremanship Training, Pesticide and Fertilizer Recertification Conference) with sales training, association updates, leadership, and meaningful discussion about LCA's future. More details on both events will be shared soon, so stay tuned.

This edition of Groundworks highlights award-winning work, shares updates from across the association, and offers a look at what is ahead. I encourage you to stay involved, attend an event, get engaged, and share your ideas. LCA is strongest when members help shape its future. Thank you for being part of this community. Here's to a great year ahead!

Zack Kline
President | 2025-2026

Opened

Closed

Luxury Smart Pergolas

Control Mother Nature at Your Home or Business
Serving Maryland, Delaware, Virginia, and Washington D.C.



Smart Phone
Controlled



Professionally
Installed



ICC Certified




Care Team

Connect with us, we bring your vision to life!

 struxure@os-pros.com

 410-504-3673

 11500 Cronridge Drive Suite 100 Owings Mills, Maryland 21117

SCAN HERE



FLORISS
WANCY.FLORISS.COM

LCA Board of Directors

President

Zack Kline
A.I.R.

Vice-President

Keith Bowman
McHale Landscape Design

Secretary/Treasurer

Kris Colby
Backyard Bounty

Directors

Jeff Rossen
Rossen Landscape

Matt Glover
Wray Brothers Landscapes

Paul Jester
J&G Landscape Design, Inc.

Whitney Langone
Meridian Landscaping and Design



Robert Lehnhoff
Lehnhoff's Landscaping

Shawn Lemke
Outdoor Living Supply

Scott Pickett
Live Green Landscapes, LLC

Oomer Syed
Fine Landscapes



DESIGN. BUILD. ENJOY.

**This is the art of
outdoor living.**

est.  1982

D. A. DUNLEVY

expertly crafted outdoor spaces

Allow us to design a luxury retreat, tailored perfectly for your lifestyle. Our award-winning Landscape Architects and Designers bring the functionality of indoor spaces to the beauty of the natural environment, turning any greenspace into a living showcase. Whether for entertaining or personal refreshment, we set the stage for life's moments.

dadunlevy.com

Thank You To Our Supplier Members

Babikow Greenhouses

Central Sod Farms, Inc.

Chief Mountain Farms

Downes Forest Products

Dulles Insurance

Irwin Stone

Joseph W. McCartin Insurance, Inc.

Manor View Farm, Inc.

Mowze

Nova Stone | Landscape & Masonry, an Outdoor Living Supply company

Outdoor Illumination, Inc.

Outdoor Kitchen Creations

SiteOne Landscape Supply

SiteOne Landscape Supply - Gaithersburg

SiteOne Landscape Supply - Manassas

SiteOne Landscape Supply - White Marsh

Southern Maryland Outdoor Power Equipment, LLC

Spring Meadow Nursery

Summit Hall Turf Farm, Inc.

Synagro/Old Line Environmental

The Perennial Farm

Vectorworks, Inc.

Walnut Springs Nursery, Inc.

Welch, Graham, & Ogden Insurance, Inc.

JWM

JOSEPH W. MCCARTIN
INSURANCE, INC.



Insurance Coverage Tailored to the Landscape & Nursery Industries

COMPETITIVE PRODUCT LINES



QUICK CERTIFICATE ISSUES



SNOW REMOVAL COVERAGE



ASK ABOUT OUR WORKERS' COMP RATES

We Understand Your Business' Specific Insurance Needs

CONTACT US TODAY

301-937-0400 | mccartin.com

Maryland Green Industries Council (MaGIC)



By Lindsay Thompson, Executive Director

Advocacy is how citizens ensure that government does not act to them, but for them.” This principle is at the heart of the Maryland Green Industries Council (MaGIC), which works to represent the interests of Maryland’s nursery, lawn care, landscape, and arborist professionals at the state level.

In recent years, MaGIC has engaged on a wide range of high-impact issues, including proposed mandates to transition to electric lawn equipment, regulation of native and invasive plant species, access to federally approved pesticides, nutrient management requirements, professional licensing, and evolving labor and employment laws. While professional advocacy in Annapolis is essential, it is equally important that legislators hear directly from those most affected, business owners and practitioners working in the field every day.

Legislation to mandate a transition to electric leaf blowers is a clear example of advocacy making a difference. What began as a broad proposal to ban all gas-powered lawn equipment has, through sustained engagement, been significantly narrowed over time. By bringing small business owners to share real-world experiences, highlighting the cost of transition, limited availability of commercial-grade electric equipment, and operational and safety challenges, MaGIC has successfully prevented overly burdensome mandates year after year.

Similarly, a recent bill that would have required pesticide applicators to notify neighbors prior to treatment raised serious administrative and privacy concerns. Testimony from industry professionals helped lawmakers understand these unintended consequences, ultimately leading to the bill’s failure to advance.

Beyond legislation, MaGIC is also active in the regulatory process, working to ensure practical implementation of new policies. For example, the consolidation of Maryland’s invasive plant list has required thoughtful coordination to allow growers time to sell existing inventory and transition responsibly.

Your voice as a landscape professional matters.

Sponsored by:



Managing the Spring Crunch: A Smarter Approach to Labor and Mowing

Across the Landscape Contractors Association network, this season has exposed a structural challenge in our industry: when Spring work is compressed, operations become strained. A delayed winter pushed cleanups and prep into a narrow window, while rapid turf growth increased mowing frequency just as crews were already stretched thin.

This creates a compounding effect. High demand reduces available labor capacity, while labor volatility—unpredictable attendance, hiring gaps, and turnover—makes scheduling increasingly difficult. Many contractors are responding by adding weekend work, but this approach raises costs, increases burnout, and introduces long-term operational risk.

To navigate this, it's helpful to rethink how mowing fits into your labor model.

Mowing is often the most time-intensive and repetitive service you provide—yet it doesn't always require your most skilled labor. By reallocating this workload, contractors can stabilize operations during peak periods.

This is where Mowze offers a practical solution.

Mowze's semi-autonomous, commercial robotic mowers handle large-area mowing with consistency and precision, allowing crews to focus on higher-value tasks like detailing, enhancements, and client-facing work.

Operational benefits include:

- Improved labor allocation: Shift skilled workers to tasks that drive revenue
- Reduced scheduling pressure: Maintain mowing cadence despite staffing gaps
- Lower overtime reliance: Minimize the need for extended hours and weekends
- Greater consistency: Deliver uniform results across properties

Managing the Spring Crunch: A Smarter Approach to Labor and Mowing

Rather than scaling your business purely through labor—which is increasingly unreliable—tools like Mowze allow you to scale through systems.

As seasonal compression and labor volatility become the norm, contractors who adapt their workflows will be better equipped to protect margins, maintain quality, and operate more sustainably.





Update on Gas-Powered Equipment Bans



By American Green Zone Alliance

The recent developments in Connecticut reflect a growing reality across the country: while the push toward cleaner landscape maintenance practices is accelerating, the industry is not yet in a position to support blanket mandates or outright bans on gas-powered equipment.

State legislators ultimately removed a proposed ban on gas-powered leaf blowers after significant feedback from landscape professionals. In its place, the revised approach focuses on creating optional pathways, such as financing programs to support the gradual adoption of battery-powered equipment. This outcome signals an important truth: progress must be practical, not punitive, and well planned.

At AGZA, we view this as an inflection point. The outcome in Connecticut reinforces that top-down mandates without field-level feasibility can create unintended consequences, especially for small businesses, working crews, and regions with infrastructure limitations. AGZA contends that any and all mandates should be paired with adequate funding mechanisms, such as have been afforded to the solar and EV industries.

The feedback from contractors and legislators highlights several key challenges that remain:

- Current battery technology does not yet match the productivity of gas-powered equipment in most applications
- Access to reliable power and charging infrastructure varies widely
- The upfront cost of transition remains a significant barrier for many operators

At the same time, there is a clear and growing interest in reducing emissions and noise where it makes sense. This is where AGZA believes the industry has an opportunity to lead and listen to the needs of communities that are frustrated and upset with noise and localized pollution created by the intensive operations of gas-powered landscape maintenance equipment daily in urban, suburban, and densely populated areas.

Update on Gas-Powered Equipment Bans (cont.)

AGZA contends that rather than reacting to external pressure, the landscape maintenance industry can define its own path forward, one grounded in real-world conditions, workforce engagement, and phased implementation. Programs like AGZA Green Zone Certification, Service Pro workforce certificate training, and independent testing and evaluation of battery electric equipment are moving us forward ensuring operational and economically feasible outcomes where possible.

AGZA advocates and practices a path forward that is not “all or nothing.” It is a measured, verified, and substantiated transition that respects all parties involved and is grounded in data, reality, and facts. Support industry with training and resources, leverage funding and incentives fairly to reduce financial burden, scale adoption over time with respect for operational realities.

This moment should not be viewed as a setback, but as a recalibration. It creates space for collaboration, innovation, and industry-led solutions that can achieve sustainability goals without compromising the livelihoods of individuals, companies, and institutional crews doing the work.

Update on Gas-Powered Equipment Bans



This is what true equity looks like, meeting small businesses where they are and equipping the people who beautify our communities every day with the tools, knowledge, and resources they deserve.



AGZA remains committed to helping guide this transition responsibly, respectfully, and with the full participation of the professionals who make our communities beautiful every day.

2025 Excellence in Landscape Awards

Each year, landscape companies from Maryland, Virginia, and the District of Columbia submit their best projects for the LCA Excellence in Landscape Awards. The projects are judged by a group of leading landscape professionals who evaluate and acknowledge exceptional design, installation, and maintenance in residential and commercial projects.

Many award winning designs are featured in Home & Design magazine, LCA Groundwork, and LCA social media distribution. Awards are presented at the end-of-the-year annual Excellence in Landscape Awards Dinner.

Thank You To Our Sponsors



Thank You To Our Media Partner





BACKYARD
BOUNTY
ARTFUL ECOLOGICAL LANDSCAPES

Complete Landscape Master Planning From Pool to Pollinators, Distinction Award

In phase one, the client replaced an underused backyard pool with a native plant garden to boost biodiversity and manage stormwater using various BMPs. Impressed by the transformation, the client commissioned a second phase to convert the front lawn into a vibrant habitat garden.



COLAO & PETER

Luxury Outdoor Living

Outdoor Living Area Design Build Waterford Creek Resort, Distinction Award

This landscape master plan transformed a blank backyard into a luxurious, resort-style retreat centered around a geometric pool with tanning ledges and a raised spa. Surrounded by travertine terraces, lounge areas, and an elegant all-season porch with an outdoor kitchen, the space is enhanced by fire bowls, water features, and layered plantings that create a seamless connection between home, landscape, and lifestyle—captivating both day and night.



Outdoor Living Area Aldie Oasis, Distinction Award

This project transformed an ordinary backyard into a multi-functional retreat that perfectly balances luxury design with everyday family living. By integrating a resort-style pool, spacious pavilion, and multiple gathering areas, a space was created to feel like an exclusive destination yet functions seamlessly for a young family's daily life. From the stone finishes to the lush, layered landscaping, every element was chosen to create both visual impact and practical usability.





Outdoor Living Area Design Build A Beckoning Backyard in Bethesda, Grand A

The clients in Bethesda, Maryland transformed an underutilized backyard—challenged by elevation and drainage—into a seamless extension of their indoor living space through thoughtful design and efficient drainage solutions. The reimagined area now features alfresco dining, a cozy firepit, and lush plantings like a sculptural Weeping Styrax and hornbeam hedge, creating a warm, modern destination for outdoor entertaining and everyday connection.



Featured Project

Where Old Charm Meets Modern Elegance, Distinction Award

This project in Frederick's historic Baker Park transformed a family home into a welcoming hub for gatherings, blending old-world charm with modern functionality. Through creative design, the property now features a pool, firepit, dining and grilling areas, and a reimagined driveway layout, all unified by a landscape plan that honors the home's character while enhancing its role as a vibrant community space.





Outdoor Living Area Design Build
Multi-Level Outdoor Retreat, Distinction Award

This Great Falls project transformed a blank-slate backyard with an aging deck into a dynamic, multi-level outdoor retreat tailored for both family living and luxury entertaining. Designed to feel architecturally intentional and seamlessly integrated with the home, the space reflects the homeowners' vision of a refined yet functional environment for their young family.





FINE EARTH LANDSCAPE, INC.

Complete Landscape Master Planning
Colorful Family Resort, Grand Award

The project includes a pool and spa with a waterfall dropping out of the spa, stone pool decking, and a stunning display of color from February through December.



Fine LANDSCAPES LIMITED

Complete Landscape Master Planning Arbor, Distinction Award

This landscape transformation centers around a luminous 20' x 40' pool with an integrated spa and sun ledge, surrounded by hand-set travertine, a concealed drainage system, and upgraded infrastructure that preserves the hardscape's elegance. Anchored by a custom outdoor kitchen and cedar pergola, the design blends architectural refinement, comfort, and sustainability.



Complete Landscape Master Planning Sparger, Distinction Award

This project transformed a sloped residential property into a cohesive, high-functioning landscape that blends modern design with timeless materials. Featuring a custom stone entry, high-end pool and spa, Zen garden, and elegant outdoor kitchen, the design showcases precision detailing, integrated lighting, and sustainable infrastructure.





Complete Landscape Master Planning
Innsbruck, Grand Award

Set on a 10-acre estate, this project showcases a masterful blend of architecture, horticulture, and artistry, anchored by two custom structures—a dramatic conservatory and a working greenhouse. With elegant pathways, curated plantings, and integrated lighting, the landscape offers a timeless experience of beauty, scale, and immersive design.



Complete Landscape Master Planning
Sharon, Grand Award

This McLean, Virginia landscape project blends refined materials, custom detailing, and functional elegance to create a serene, cohesive outdoor environment. Anchored by a water feature, pea gravel terrace, and firepit, the design integrates natural flow, privacy, and architectural harmony—delivering quiet luxury tailored for year-round comfort and beauty.



Complete Landscape Master Planning
Midvale, Distinction Award

This full-property transformation in Falls Church, Virginia, blends engineering precision with elevated outdoor living to create a refined, high-functioning landscape. With layered hardscapes, lush plantings, and integrated drainage solutions, the design enhances both beauty and usability—delivering a timeless outdoor environment tailored for year-round enjoyment.



Complete Landscape Master Planning
Rockland Terrace, Distinction Award

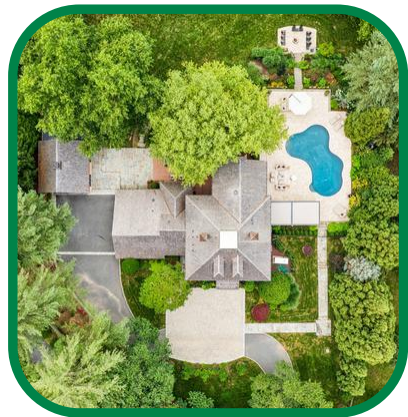
This McLean, Virginia property was transformed into a resort-like retreat centered around water, stone, and lush plantings, anchored by an 18' x 40' pool with an integrated spa and a custom koi pond with waterfall. With travertine terraces, firepit, boulder walls, and vibrant plantings enhanced by lighting and irrigation systems, the design blends engineering precision with refined aesthetics.



Complete Landscape Master Planning
Split Creek, Distinction Award

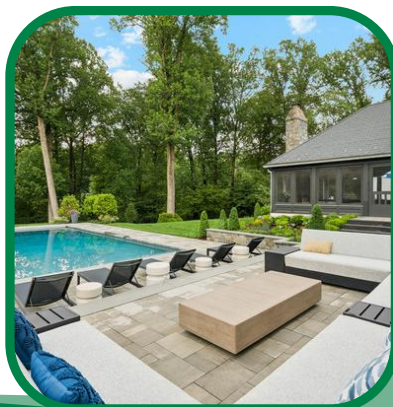


This landscape transformation reimagines a traditional residential lot into a refined retreat, anchored by a modernized saltwater pool, expansive travertine terrace, and layered garden spaces. With integrated lighting, irrigation, and high-performance outdoor features, the design balances luxury, functionality, and enduring beauty for year-round enjoyment.



Complete Landscape Master Planning
Stanmore, Distinction Award

This comprehensive landscape transformation in Potomac, Maryland, blends elevated outdoor living with athletic function, anchored by a modern pool terrace, custom outdoor kitchen, and a professional-grade synthetic turf soccer field. With refined materials, integrated lighting and irrigation, and thoughtful circulation, the design delivers a seamless, multi-use environment that balances beauty, performance, and recreation.





Outdoor Living Design Build
Sunset Views, Honorable Mention Award

A brand new house built on top of a hill that was an empty lot. We crafted a beautiful design with landscaping, outdoor lighting, multiple tiers of hardscape and softscape to all tie into a beautiful pool and outdoor kitchen. This project took months and used a lot of different natural stone, pavers, and wall blocks with big natural limestone from the old Havre de Grace railroad tracks that were restored.





Outdoor Living Area
Washington Residence, Distinction Award

This outdoor living space blends luxury and function with a timber-framed pavilion, full outdoor kitchen, and elevated stone-clad spa spilling into a resort-style pool. Coordinated pavers and masonry seat walls unify the design, while the fire pit terrace provides panoramic views for year-round entertaining.



Complete Landscape Master Planning
Luxury Living In Laurel Hometown, Distinction Award

This transformation created a private resort-style retreat designed for relaxation and year-round entertaining. Anchored by a shimmering pool with custom water features, the space includes symmetrical hardscaping, lush plantings, and a covered pavilion with an outdoor kitchen, fireplace, and bar, crafted with meticulous detailing and a harmonious blend of materials for luxurious outdoor living.



Outdoor Living Area
Kenwood, Grand Award



This landscape project transformed a challenging corner lot into a cohesive and elegant outdoor living space that complements a renovated Federalist home. Key features include a formal entry pad of herringbone brick and bluestone, a cedar pergola sheltering a fireplace lounge and dining terrace, and a gracious pool framed by lush plantings.





Complete Landscape Master Planning Bellissimo Residence, Distinction Award

Set deep in the Virginia woods, this mountainside property was transformed into a French Chateau-inspired retreat through dramatic excavation and the construction of a 16-foot retaining wall to create a level foundation. The resulting outdoor space features a travertine fountain, swim spa, outdoor kitchen, enclosed porch, and dog-friendly areas—showcasing timeless European charm through thoughtful design and craftsmanship.



Complete Landscape Master Planning Schroder Residence, Distinction Award

The clients wished to upgrade the entire property to reflect the improvements they had recently made to the interior of the home. They wanted a space that would allow them to easily entertain and spend more time as a family outside in the yard.





Complete Landscape Master Planning Gondy Residence, Distinction Award

The client requested a complete front and rear yard redesign and installation. This included a new entrance walk, fountains, pool entertaining area, firepit area, lighting and plantings.



Commercial Landscape Installation
Towson University - College of Health Professions, Distinction Award

This project involved a complex and large-scale installation featuring 108,000 square feet of sod, custom green roof soil media, bio-retention facilities, and irrigation systems across ground-level and rooftop courtyards. The green roofs—spanning two floors—were constructed with bluestone walkways, lightweight soils, boulders, trees, and Mexican beach pebble, hoisted via a 300-ton crane in 183 lifts from three ground locations.



Outdoor Living Area
Klein Residence, Distinction Award

This project reimaged a deteriorating wooden deck and retaining walls into a sophisticated multi-level outdoor living space that honors the architectural legacy of a 1920s residence. Featuring a bluestone patio, intimate fire pit area, custom Chippendale railings, and integrated lighting, the design blends historic charm with modern functionality through precise masonry, thoughtful grading solutions, and carefully sourced materials.





Outdoor Living Area Chase Creek Residence, Distinction Award

Perched on a knoll above the Severn River, this 1.87-acre historic estate—built in 1935—offers commanding water views and rare privacy from its steep bluff setting. Years of invasive growth had obscured its stone terraces and garden rooms, but we were brought in to restore the property’s original charm and bring it back to life.



Residential Maintenance Twin Shields Residence, Distinction Award

This legacy property has been meticulously maintained for over five years through thoughtful stewardship, seasonal enhancements, and a commitment to craftsmanship. Traditional materials, native plantings, and elegant hardscape features create a vibrant, sustainable landscape that supports frequent entertaining while preserving the home’s historic character and year-round appeal.





Residential Maintenance Severn River Residence, Grand Award

Originally part of a front entrance and foundation renovation during a major home remodel, this Annapolis riverfront property has evolved into a lush, cohesive landscape that gracefully blends historic charm with contemporary design. Our team now oversees every aspect of its care—from plant health and seasonal color to the preservation of custom gates and stonework—ensuring the property remains vibrant, functional, and ready for everyday enjoyment or special occasions.



Outdoor Living Area Bloomfield Residence, Distinction Award

The Bloomfield Residence showcases a masterful transformation from a blank canvas into a sophisticated outdoor sanctuary, where modern design elements harmonize with natural materials and mature trees. Seamlessly integrating function, beauty, and innovation, the landscape enhances daily living and deepens the client's connection to nature.





Outdoor Living Area Cypress Creek Residence, Grand Award

The Cypress Creek Residence transforms a steep, wooded backyard in Severna Park, MD into a vibrant, multi-level retreat with terraces, gardens, and outdoor living spaces that connect the home to a new pool and entertaining area. Through expert grading, custom hardscaping, and layered plantings, the design balances structural precision with natural beauty—creating a sustainable, inviting landscape that supports daily living and special gatherings.



Residential Maintenance Dividing Creek Residence, Grand Award

Perched above Dividing Creek, this Severna Park property reflects the ongoing success of a multi-year landscape renovation that began in 2020, transforming steep grades and complex drainage into a functional, beautiful outdoor environment. Today, our maintenance program ensures the health of pollinator-friendly gardens, the stability of waterfront slopes, and the preservation of native plantings and structural features.





Outdoor Living Area Royal Oak Residence, Distinction Award

The Royal Oak Residence is a luxurious waterfront transformation that blends refined outdoor living with environmental sensitivity, featuring a custom poolscape, integrated hardscaping, and extensive softscape enhancements. Key elements—including a travertine pool deck, raised spa, outdoor kitchen, wildflower meadow, and colorful planting beds—were thoughtfully designed to frame sweeping water views while creating intimate spaces for relaxation and entertainment.



Complete Landscape Master Planning Woodlea Mills Residence, Grand Award

Although the client was satisfied with the overall landscape design, they turned to us to correct poor planting execution and restore horticultural integrity across the property. Our team reestablished proper planting methods, removed excess mulch, and added vibrant enhancements—including a live turf pickleball court, courtside patio, garden structure, and extensive new plantings—to elevate both function and year-round appeal.





Outdoor Living Area Franklin Park Residence, Distinction Award

Constructed in 2021 on a wooded half-acre lot, this modern Tudor required a comprehensive outdoor renovation to match the home's high-end interior finishes. Our team enhanced the existing deck and added patios, a fireplace, walkways, a putting green, and extensive plantings, grading, lighting, irrigation, and drainage systems to create a cohesive and luxurious landscape.



Residential Maintenance Seneca Residence, Grand Award

The Seneca Residence has evolved from a successful design/build project into a showcase of high-touch landscape maintenance, where our team continues to oversee every detail—from seasonal rotations to hardscape preservation. With diverse site conditions and a focus on clean geometry and vibrant health, our crews ensure the landscape's quiet elegance endures through proactive care, structural upkeep, and horticultural precision.





Residential Maintenance Hunters Mill Residence, Distinction Award

Installed in 2012 alongside the home's construction, the Hunter Mill Residence in Vienna, Virginia has matured into a meticulously maintained estate that blends structured elegance with natural beauty. Featuring a screened porch, outdoor kitchen, pool and spa, water feature, and firepit, the landscape is sustained through year-round care that keeps each garden room and focal point vibrant, pristine, and true to the client's original vision.



Complete Landscape Master Planning Vienna Residence, Distinction Award

Following the full demolition of the original 1957 home, this $\frac{3}{4}$ -acre corner lot was transformed over four years into a timeless landscape that complements the newly built residence. With layered seasonal gardens, walkways, and a pool area designed to enhance year-round beauty and sustainability, the property now reflects a seamless blend of architectural elegance and horticultural refinement.





Residential Maintenance Spring Hill Residence, Distinction Award

The Spring Hill Residence in McLean, VA exemplifies elevated residential maintenance, where formal design and clipped evergreens are enhanced by precise weekly care and vibrant seasonal plantings. From turf and irrigation to pruning, pest monitoring, and water feature upkeep, our team ensures every element remains crisp, composed, and expressive of a high-end aesthetic that transforms landscape care into a living art form.



Residential Maintenance Tred Avon River Residence, Honorable Mention Award

Located along the scenic Tred Avon River in Easton, Maryland, this award-winning summer home balances native plantings, functional hardscaping, and environmental sensitivity across a series of formal and informal outdoor spaces. Since 2019, our maintenance program has ensured year-round beauty and resilience through eco-conscious care, seasonal enhancements, and structural preservation that support both the landscape's maturity and the homeowner's low-intervention lifestyle.





Residential Maintenance Ballantrae Farms Estate, Grand Award

Following a major installation in 2020, the Ballantrae Residence in McLean, VA has been meticulously maintained to preserve its elevated terrace, travertine pool deck, architectural columns, and lush plantings. Today, clipped evergreens, vibrant seasonal displays, and precise detailing define the estate's curb appeal and garden elegance, reflecting a commitment to excellence in both hardscape and horticultural care.





**PLANTED
EARTH**
EST 2010

Outdoor Living Area
Northwest D.C. Hillside, Grand Award

This young family transformed their sloped property into a vibrant outdoor retreat featuring a pool, water feature, terraced seating, outdoor kitchen, and a lacrosse practice area. Thoughtful grading and layout ensured seamless integration and natural flow, creating a space perfect for both active play and relaxed entertaining.



Outdoor Living Area
McLean Residence, Grand Award

This young family envisioned their landscape as a year-round retreat for play, privacy, and connection. The result is a multifunctional space that blends aesthetics, sustainability, and fun—perfect for making lasting memories together.





Commercial Landscape Installation Garden of Ales, Distinction Award

The client's goal was to transform an underutilized outdoor area into a welcoming and functional green space where patrons could relax, dine, and socialize. The installation centered around creating a private, natural-feeling courtyard to complement the business's atmosphere while accommodating heavy foot traffic and seasonal use.



Outdoor Living Area Terraced Garden at Rockwood, Grand Award

This landscape project thoughtfully blends function, beauty, and recreation to create a serene outdoor environment. Privacy is achieved through screening trees, while a curated entry garden and a naturalistic stream garden with irregular pavers offer a welcoming and visually engaging experience.



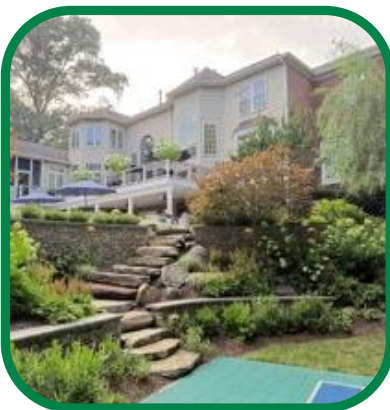
Complete Landscape Master Planning
 DC Modern Sanctuary, Grand Award

This modern home's compact yard was transformed into a personalized "resort" that balances fun and relaxation for both kids and adults. A flush pool and spa design creates a reflective surface that complements the feature wall, while strategic collaboration with the builder ensured the outdoor space is visually integrated with the home's interior views.



Complete Landscape Master Planning
 Great Falls Family Fun, Distinction Award

This project transformed a deteriorating hillside and outdated backyard into a luxurious, resort-style space designed for family enjoyment and entertainment. Key upgrades included expanding and modernizing the existing court for better usability, while integrating thoughtful design elements to maximize the property's potential and create a cohesive outdoor retreat.





RUPPERT
LANDSCAPE

Commercial Landscape Installation
3350 Peachtree, Grand Award

Located at the intersection of Atlanta's PATH400 and HUB404 greenway initiatives, the 3350 Peachtree plaza transforms a Class A office building into a vibrant, 1-acre outdoor destination inspired by Roberto Burle Marx's modernist garden designs. Through extensive concrete work, custom hardscaping, and layered plantings, the space invites community engagement with seating, gathering areas, and sustainable features that elevate both urban connectivity and quality of life.



Commercial Landscape Installation
The Mather at Tysons, Grand Award

Mather's Tysons community redefines senior living through a wellness-focused landscape that integrates nearly three acres of green space—including rooftop gardens, walking paths, sports courts, and a dog park—within a vibrant urban setting. Achieved through extensive value engineering and complex multi-level construction, the project blends biophilic design, sustainability, and high-end amenities to support active aging and meaningful connection to nature.





RUPPERT
LANDSCAPE

Commercial Maintenance
Fair Hill Racetrack and Special Event Zone, Distinction Award

As part of Maryland's 5,656-acre Fair Hill NRMA, the Fair Hill Racetrack and Special Event Zone is a world-class venue for Olympic-level equestrian competitions, maintained year-round by our dedicated crew and autonomous mowers across 100+ acres of turf. Through expert coordination of turf care, infrastructure upgrades, and event-specific preparations, we've transformed the site into a high-performance surface ready to host elite racing and international events with precision and sustainability.



Commercial Landscape Installation
North Potomac Yard Park, Grand Award

North Potomac Yard Park in Alexandria, Virginia transforms a former railyard into a vibrant, transit-oriented green space aligned with the city's Environmental Sustainability Master Plan, featuring walkable connections, bioretention areas, and over 4.5 acres of public gathering space. Despite challenges with contaminated soils, our team collaborated with city officials and environmental consultants to safely deliver a dynamic landscape that includes extensive hardscaping, stormwater infrastructure, and thousands of plantings.





Commercial Maintenance
Perimeter Summit, Distinction Award

Perimeter Summit was envisioned as a premier corporate campus that blends curated ornamental plantings with functional green spaces to create a welcoming, wellness-focused environment for employees and visitors. With vibrant seasonal color, finely maintained turf, walking trails, outdoor workstations, and an organic vegetable garden, the landscape supports both productivity and restoration in the heart of Atlanta.



Commercial Maintenance
Kiawah River Coastal Community, Grand Award

Kiawah River Coastal Community is a high-end agridesign designed to harmonize with its Sea Island surroundings, featuring native plantings, meadows, and amenities that promote ecological stewardship and wellness. Our team maintains over 13 acres of turf and thousands of plantings with detailed care and sustainable practices, ensuring the landscape remains vibrant, resilient, and welcoming for residents and frequent community events.



Outdoor Living Area Design Build Ferry Hall, Distinction Award

The client requested a new backyard pool environment, which included a waterproofed carpentry deck, new hardscapes, landscape plantings, irrigation, drainage, lighting, and stone walls with steps. Our team delivered a cohesive outdoor transformation that blends functionality and craftsmanship to elevate the space for relaxation and recreation.



Outdoor Living Area Design Build Druid Modern, Grand Award

The client requested a full landscape renovation, which included new hardscaping in both the front and rear yards, as well as a covered brick addition to enhance outdoor functionality. As part of the construction, Fairfax County stormwater compliance work was also completed.



Outdoor Living Area Design Build Shelton Drive, Distinction Award

This backyard transformation included the installation of a new landscape, a walkway leading to the rear yard, fencing, and a porcelain/turf inlay pool deck surrounded by stonework and lush plantings. The scope also featured lighting, drainage, irrigation, and sod to create a fully integrated and functional outdoor living space.



Outdoor Living Area Design Build Mashie Residence, Grand Award

This custom renovation features the demolition of an existing deck, synthetic turf, and trees to make way for a lagoon-shaped swimming pool, multi-level deck, and a covered outdoor kitchen area complete with a firepit table, sink, smoker, BBQ grill, pop-up TV, ceiling heaters, and integrated audio and lighting. Extensive stonework, new synthetic turf, lush landscaping, irrigation, and drainage systems complete the project, delivering a luxurious and highly functional outdoor retreat.



Outdoor Living Area Design Build
Windy Hollow, Distinction Award

This backyard renovation involved demolishing an existing deck, relocating a septic force main line, and creatively fitting a plunge pool between the house, driveway, and septic infrastructure—all while keeping land disturbance under 2,500 sq. ft. The project features a multi-level deck, raised patio, travertine pool deck, custom railing, large boulders for soil retention, and a raised bond beam wall with sheer descents, delivering a highly customized outdoor space without triggering a site plan.



Outdoor Living Area Design Build
Acacia Residence, Distinction Award

This backyard renovation included the demolition of existing concrete and a large Norway Maple to make way for a custom BBQ island featuring a pizza oven, smoker, granite farmhouse sink, fridge, and a curving bluestone bar. The design was completed with tumbled and pea gravel patios, raised black locust garden beds, synthetic turf, colorful plantings, and Coastal Source landscape lighting for a vibrant, multifunctional outdoor retreat.



Complete Landscape Master Planning
Compact, Complete, Captivating, Distinction Award

This project transformed a narrow backyard into a cohesive and inviting outdoor environment by layering a series of functional outdoor rooms. Centered around a covered cooking space, the design cleverly maximizes usability and obscures challenging property lines, resulting in a seamless, versatile setting for daily living and entertaining.



Outdoor Living Area Design Build
Precision in the Garden, Distinction Award

This formal garden project extends the architectural elegance of the home into the landscape, drawing inspiration from classic British gardens. Through structured planting, symmetry, and refined hardscaping, the design creates a timeless outdoor space that reflects both the residence's character and its heritage.



Outdoor Living Area Design Build
Artful Escape, Grand Award



This residential outdoor living project evolved from a planting redesign into a full-property transformation featuring curated gardens, hardscapes, and furnishings. Highlights include a striking sculpture garden with mature hedges and floating art elements, as well as walls showcasing a collection of 15 ferns—demonstrating thoughtful sourcing and collaborative planning throughout the space.



Complete Landscape Master Planning
Capital Oasis, Honorable Mention Award

This project transformed a property into a refined, functional landscape designed for year-round enjoyment. Featuring a synthetic evergreen lawn, a luxurious pool oasis, and layered plantings with sculpted hardscapes, the design enhances both relaxation and visual impact while creating a cohesive, welcoming experience from front entry to backyard retreat.





Featured Project
At-Home Pool Resort, Honorable Mention Award

This breathtaking backyard retreat redefines luxury outdoor living by blending architectural elegance with functional entertainment. Anchored by a custom PebbleTec® pool with fire bowls and spillways, the space features a marble patio, year-round spa, and a fully equipped pavilion with gourmet kitchen, bar, fireplace, and built-in heating—complemented by curated lighting, lush landscaping, and a private multi-sport court for a seamless balance of comfort, beauty, and play.



Past Events

2025 Annual Networking Dinner



2025 Sustainability Symposium



2025 Bloom Facilities Tour



2026 Pesticide and Fertilizer Applicator Recertification Conference



Membership by the Numbers



80+

Contractor, Educational Institutions,
and Supplier Members



4,400+

Individuals in LCA's robust and
engaging community



59+

Years of Supporting MD, DC and VA

Coming Soon

- Excellence in Landscape Awards Applications - Summer 2026
- LCA First Annual Golf Tournament - September 23, 2026
- Annual Awards Celebration and Dinner - Fall 2026
- LCA Annual Meeting - January 2027

LCA Offerings

LCA Members have access to exclusive offerings like these:

LCA Events

Expand your network, gain industry insights, and celebrate excellence through LCA's events. From networking to hands-on education and our prestigious Awards Dinner, there's something for everyone. Plus, LCA members enjoy discounted registration fees—join us and make the most of your membership!

LCA's Online Community

Connect, collaborate, and stay informed with your fellow landscape professionals in this vibrant and dynamic online space. Join today and gain immediate access to LCA's private social network, along with a host of other member benefits designed to support your professional growth and success.

LCA's Career Center

Whether you're looking for top talent or your next big career move within the landscaping industry, we've got you covered. LCA members enjoy exclusive discounts on job postings, making it easier to connect talent with opportunity.

LCA's Gram

Stay informed with the LCA Gram, our weekly e-newsletter exclusively for members. Each issue features the Integrated Pest Management report, essential updates on association news, and industry trends, ensuring you're always in the loop on what's happening in the green industry.

Don't miss out on these valuable benefits.



Join LCA today!



ad