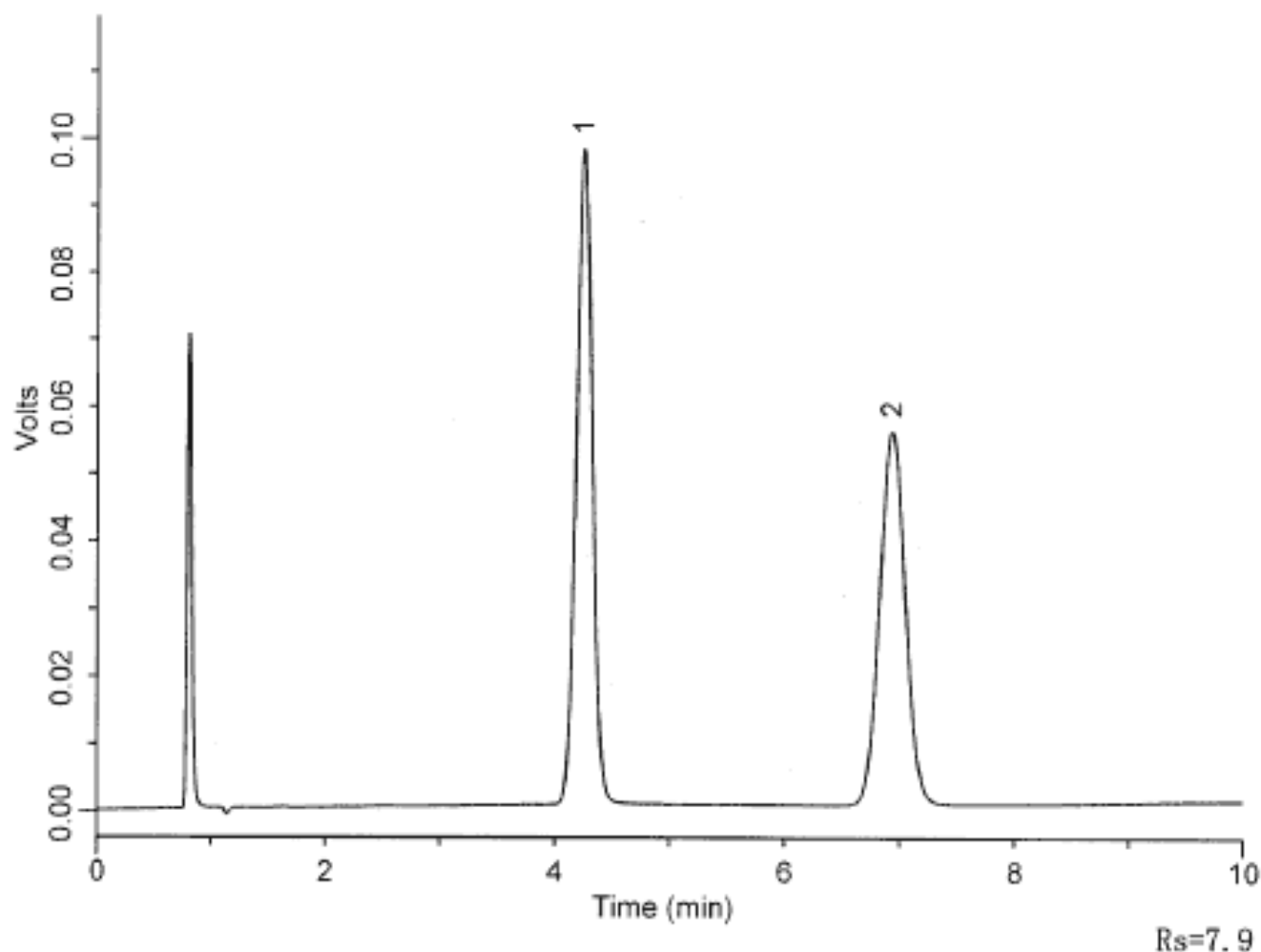


## Analysis of Scopolamine butylbromide

Data No. LA179-0000



Column : Inertsil C8-3  
5 $\mu$ m  
150  $\times$  4.6mm I.D.

Solutes : 1. Scopolamine(0.1mg/mL)  
2. Scopolamine butylbromide(0.1mg/mL)

Column Cat. No. :

Eluent : Methanol/19mM Sodium laurylsulfate  
=65/35(pH3.6 by 10%Phosphoric acid)

Flow rate : 1.5 mL/min.

Col. Temp. : 30°C

Detection : UV 210 nm

Injection Vol. : 20 $\mu$ L

Sample : 1. Scopolamine(0.1mg/mL)  
2. Scopolamine butylbromide(0.1mg/mL)