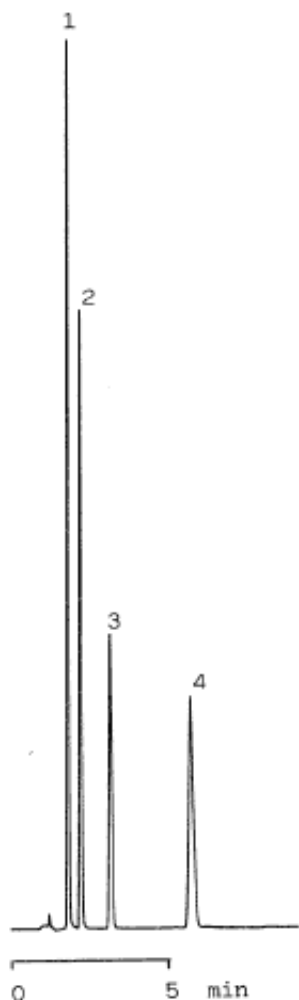


# InertSearch™ for LC

Inertsil® Applications

## Nitrosoamines

Data No. LA308-0000



Column : Inertsil ODS-2  
5 $\mu$ m  
150  $\times$  4.6mm I.D.

Column Cat. No. : 5020-01101

Eluent : CH<sub>3</sub>CN/10mM K<sub>2</sub>HPO<sub>4</sub>=60/40

Flow rate : 1.0 mL/min.

Col. Temp. : 40°C

Detection : UV 230 nm

Injection Vol. :

Sample :

Solutes : 1. N-Nitrosodimethylamine  
2. N-Nitrosodiethylamine  
3. N-Nitrosodi-n-propylamine  
4. N-Nitrosodiphenylamine