

A stylized space-themed graphic. At the top, a blue rocket with a yellow starburst trail points upwards. Below it, a blue orbital path curves across the frame. In the center, a large orange rounded rectangle contains the text 'TO WILKES AND BEYOND' in a dark blue, serif font with white outlines. The background is a dark blue space filled with white stars, a green planet with white circles, and a smaller blue rocket at the bottom center.

TO WILKES
AND BEYOND

FIRST-YEAR STUDENT
ORIENTATION
2026

Wilkes University

ORIENTATION SCHEDULE

8:30 AM: REGISTRATION, 1ST FLOOR CONCOURSE, HENRY STUDENT CENTER (SUB)

Check in to start your Orientation experience! Once checked in, student guides will escort you to breakfast.

8:30 AM-9:30 AM: BREAKFAST, DOROTHY DICKSON DARTE (DDD)

Once checked in, student guides will escort you to the Dorothy Dickson Darté Center for the Performing Arts. Enjoy a continental breakfast and refreshments.

9:30 AM: WELCOME SESSION, DOROTHY DICKSON DARTE (DDD)

Welcome to Orientation! Student Orientation Coordinator, Anthony Kehs will welcome students and guests, provide an outline of the day and dismiss students into their E-Mentor groups.

9:45 AM-11 AM: FAMILY AND GUESTS - SETTING YOUR STUDENT UP FOR SUCCESS, DOROTHY DICKSON DARTE (DDD)

Gain insights from various departments on helping your student transition successfully to life at the University. A panel of staff from Campus Counseling, the Office of Academic Success, the Center for Career Development and Internships, Student Development and University Police will share strategies for supporting your student in this interactive Q & A session.

9:45 AM-11 AM: STUDENTS - WITH E-MENTORS, MCHALE ATHLETIC CENTER (MAC)

Break out into E-Mentor groups to get energized and meet your classmates.

11 AM: BREAK

Stretch your legs and join us in the JPAC in the Henry Student Center for our next session for students, or remain in the DDD for family members and guests.

11:15 AM-12 PM: FAMILY AND GUESTS - FINANCIAL AID & BURSAR INFORMATION, DOROTHY DICKSON DARTE (DDD)

Learn valuable details about students' tuition bill, payment options, and financial aid.

11:15 AM-12 PM: STUDENTS - GROW, CONNECT, CELEBRATE! JEAN & PAUL ADAMS COMMONS (JPAC)

Join the Office of Diversity Initiatives to learn how our programs and services support you throughout your Wilkes experience to grow, connect, and celebrate you!

12 PM-1 PM: RESOURCE FAIR, 1ST FLOOR CONCOURSE, HENRY STUDENT CENTER (SUB)

Visit our resource fair to meet with campus resources that can help you get ready for the fall semester.

11:45 AM-1 PM: LUNCH, 3RD FLOOR, HENRY STUDENT CENTER (SUB)

Rejoin your family/guests/student for lunch in Henry's Dining Hall to enjoy lunch.



1 PM-2 PM: GROUP ADVISING SESSIONS

JPAC, DDD or SLC 105 - see your name tag for location

Family, guests and students will meet with a First-Year Advisor from the Office of Academic Success to learn more about Fall semester classes, academic success tips, navigating the college classroom, the general education curriculum, and more!

2:15 PM: RESIDENCE LIFE INFO SESSION, JEAN & PAUL ADAMS COMMONS (JPAC)

Family, guests and students will hear from the Office of Residence Life to learn about living on campus, residence hall expectations and more!

OR

2:15 PM: COMMUTER LIFE INFO SESSION, FARLEY LIBRARY 002

Family, guests and students will hear from the Wilkes University Commuter Council leadership and their staff advisor to learn about commuting to campus, parking, and more!

3 PM: 1ST FLOOR, HENRY STUDENT CENTER (SUB)

Did you enjoy the scavenger hunt today? A winner will be chosen at 3pm, you must be present in the Henry Student Center to win! You have now wrapped up the programmed portion of the day. Feel free to grab some coffee and refreshments, visit the Colonel's Corner Bookstore, stop by the Career Center (located just steps away from the rear doors of the Henry Student Center. Look for the yellow hand chair!), and get to know some of the other parents and families. Thank you for joining us for Orientation!

3:15 PM: JULY 8TH - PRE-PHARMACY STUDENTS AND FAMILIES, STARK LEARNING CENTER (SLC) 130

Join the Nesbitt School of Pharmacy for an Ice Cream Social to end your day!

GET ACQUAINTED - PAGE 4

GET SOCIAL - PAGE 7

GET RESOURCES - PAGE 12

GET READY - PAGE 16

MEET YOUR E-MENTORS!

WHO ARE THE E-MENTORS?

The Wilkes University e-Mentoring Program provides first-year students with one-on-one and small group access to students who have been in their shoes before! This unique Wilkes experience through mentorship aids new Colonels in their transition to college and aims to provide an extraordinary supportive environment for academic excellence and personal growth. An effective mentor understands that their role is to be dependable, engaged, authentic and tuned in to the needs of the mentee.



ABBY MALIN
She/Her
Sports Management



ALTON SMARGIASSI
He/Him
Political Science



ANTHONY KEKS
He/Him
Communications Studies



ARI PICKERING
She/Her
Pharmacy



BECCA EARNST
She/They
Marketing



CASSIE MCGINLEY
She/Her
Pharmacy



CRAIG CONVILLE
He/Him
Mechanical Engineering



DIALLA YOWAKIM
She/Her
Pharmacy



EBUN SHOKUNBI
She/Her
Pharmacy



EGHOSA WASHINGTON
He/Him
Pharmacy



EMMA AFTUK
She/Her
Pharmacy



GAVIN EYERLY
He/Him
Pharmacy



GEANNA KIRCHNER
She/Her
Pharmacy



GRIFFIN VIOLA
He/Him
Environmental
Engineering



HAYLIE LUND
She/Her
Pharmacy



JOHN TONDORA
He/Him
Biology



JUSTIN KREBS
He/Him
Mechanical Engineering



HAILEY VOGEL
She/Her
English & History



KOTA BROWN
They/Them
Psychology



KRISIA PATEL
She/Her
Pharmacy



LYNZEË ANDREUZZI
She/Her
Sports Management



MADISON ASKEW
She/Her
Criminology



MERCEDES ARTAI
She/Her
Neuroscience &
Psychology



MIRO CLASS
He/Him
Biochemistry & Digital
Design and Media Art



MORGAN SCHNELL
She/Her
Biochemistry &
Neuroscience



PAIGE NEWCOMB
She/They
Digital Design and
Media Art



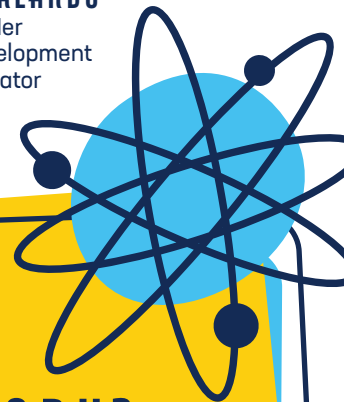
VANESSA COYLE
She/Her
Sports Management



SAVANNAH HALLETT
She/Her
Student Development
Director



ESTHER ORLANDO
She/Her
Student Development
Coordinator



HOW DOES THE e-MENTOR PROGRAM WORK?

The mentoring experience continues into Welcome Weekend and throughout the entire fall semester. e-Mentors provide information and resources available to students as they adjust to the University and college life, establishing a climate of trust, support and encouragement. e-Mentors communicate regularly with their mentees, but are not limited to electronic communication. Students often meet face-to-face for lunch or coffee, and mentee groups may attend campus events together as well.

PLAY TO WIN!

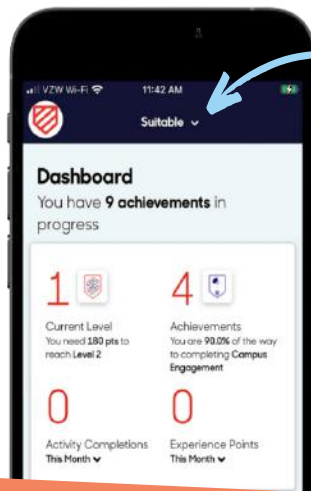
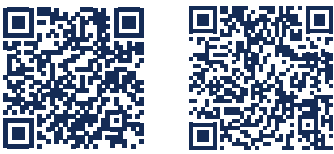
ORIENTATION SCAVENGER HUNT!

Tap into your competitive side and play a campus wide scavenger hunt! Scan a Suitable code at each session you attend to be entered into a drawing at the end of your day here at Wilkes. The more sessions you attend, the more chances you have to win! Talk to your e-Mentor the morning of orientation to plan out your day and to gain more information on this competition.

MUST BE PRESENT AT 3 PM TO WIN!

MOBILE DOWNLOAD

Download the Suitable app
in your App store!



DOWNLOAD SUITABLE!

Suitable is your guide to experiences outside the classroom! You will complete activities and engage in experiences that will broaden your perspective, enhance your professional skills and define your personal values. It is recommended to check the Suitable app each week to view upcoming events and find tasks to complete. With each event check-in and completed task, you will earn points that just may land you a spot on our monthly leaderboard!

Download the Suitable mobile app from your phone's app store, or go to app.suitable.co on a desktop.

1. Login with your University email address and password.
2. Allow notifications from the Suitable app.
3. Ensure that you give the app access to your camera.

Questions? Contact studentdev@wilkes.edu or support@suitable.co.

CHECK OUT THE RESOURCE FAIR

(FIRST FLOOR OF HENRY STUDENT CENTER, 12 - 1 PM)

- Academic Success
- Air Force ROTC/Army ROTC
- Bonner Leader
- Bursar's Office
- Center for Career Development & Internships
- Commuter Council
- Counseling
- Dining Services
- Esports
- Financial Aid
- Health & Wellness
- Honors & Scholars Program
- Information Technology
- Multicultural Student Coalition
- Office of Diversity Initiatives
- PNC Bank
- Pre-Health Advising
- Programming Board
- Residence Life/Residence Hall Council
- Student Government
- University Police & Parking
- Work Study
- Writing Center
- Wilkes Adventure Education

GET SOCIAL!

BE IN THE KNOW BEFORE THE SEMESTER BEGINS!
CHECK OUT SOME OF OUR MOST POPULAR INSTAGRAM ACCOUNTS:

@WILKESU

To keep up with special guests on campus, student spotlights and other campus happenings, make sure to follow the official Instagram account for Wilkes University. You'll be kept up to date on just about everything you can think of, from upcoming performances, new academic opportunities and more.

@WILKESCOLONELS

Are you already looking forward to showing your Colonel spirit at Wilkes sporting events? You'll definitely want to follow Wilkes University Colonels for all things athletics. This account promotes our Players of the Week, shares weekly game schedules throughout the year and highlights all the amazing things our student-athletes are doing.

WILKES MEGA COUNCILS (check out page 22 for more)

@WILKES5G - Student Government

@WILKESUPB - Programming Board

@WILKES_MSC - Multicultural Student Coalition

@WILKES_COMMUTER - Commuter Council

@WILKES_RHC - Residence Hall Council

@WILKESU_DIVERSITY

Here at Wilkes, we strive to emphasize inclusivity among our students from all cultures and experiences; the Center for Global Education and Diversity Initiatives does an incredible job at showing it! To stay informed on guest speaker events, themed coffee hours and informational sessions covering a wide variety of topics, make sure to keep up on Instagram.

@WILKESU_STUDEV

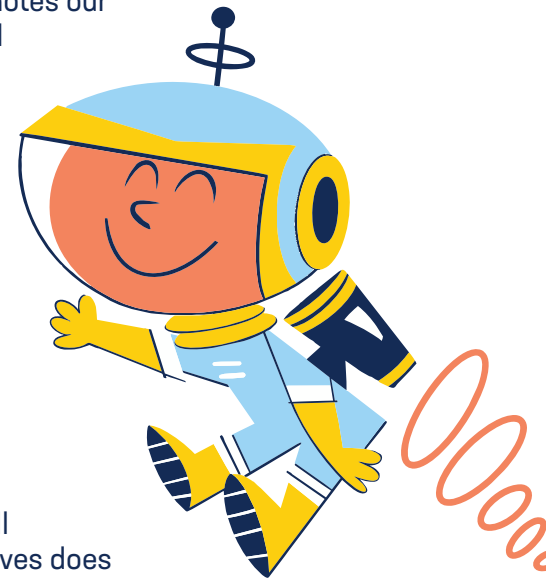
You'll never be bored on campus thanks to the lineup of trips and surprises planned by the Office of Student Development! By following along, you'll be the first to know about the next bus trip to NYC and Broadway, major sporting event, or pop-up in the Henry Student Center. Don't miss out!

@WILKESDINING

Yes, our Dining Services department is active on Instagram! The dining hall is known for holding holiday-themed specials, pop-up dessert stations and other delicious surprises. Check in frequently for specialty menus and other helpful information!

@WILKESMENTORS

Looking for guidance as you start your Wilkes journey? Be sure to follow the official Wilkes University e-Mentors Instagram! Here, you'll meet your mentors, get helpful tips for navigating campus, and stay up to date on Orientation events, Fall semester events, reminders, and resources designed to help you succeed from day one and beyond.



ACCESS YOUR CLASS SCHEDULE

To view your current fall schedule, use the following steps:

Log in to the Wilkes Portal at portal.wilkes.edu.

1. After logging in, locate the left-hand menu and select “Students,” then click “Student Services.”
2. Within the “Student Services” tab, select “Classes and Schedules.”
3. In the “Classes and Schedules” section, click “View My Schedule.”
4. Once in the “View My Schedule” area, navigate to “Schedule Details.”

The “Schedule Details” section will display important information, including your registration status, course meeting times and days, room locations, and instructor names.

Need a schedule change or have concerns?

Email the advising coordinator that sent your original schedule or visit Advising Services in Conyngham Hall, Second Floor.

[Student](#) • [Registration](#) • [View Registration Information](#)

View Registration Information

Look up a Schedule | Active Registrations

Class Schedule

Term: Fall 2026

Schedule | **Schedule Details**

Class Schedule for Fall 2026

Academic Resilience First Year Foundations 101 Section A Class Begin: 08/31/2026 Class End: 12/23/2026	Registered
08/31/2026 -- 12/23/2026 S M T W T F S 11:00 AM - 11:50 AM Type: Class Location: Main Building: Stark Learning Center Room: 223 Instructor: Buickus_Jessica (Primary) CRN: 30989	
Finan. Acct & Decision Making Accounting 161 Section A Class Begin: 08/31/2026 Class End: 12/23/2026	Waitlisted
08/31/2026 -- 12/23/2026 S M T W T F S 08:00 AM - 09:15 AM Type: Class Location: Main Building: Simms Center on Main Room: 201 Instructor: Chisarick_Cynthia (Primary) CRN: 30146	
General Psychology I Psychology 101 Section B Class Begin: 08/31/2026 Class End: 12/23/2026	Waitlisted
08/31/2026 -- 12/23/2026 S M T W T F S 10:00 AM - 10:50 AM Type: Class Location: Main Building: Breiseth Hall Room: 320 No specified Instructor CRN: 30460	
Public Speaking Communications 101 Section J Class Begin: 08/31/2026 Class End: 12/23/2026	Registered

LIVE/D2L

D2L, or LIVE, as it is also known, is a website very important to Wilkes students. This is where you can view your classes, read announcements from professors, submit papers, take quizzes, access class resources and information and much more!

Make sure to familiarize yourself with LIVE before your first day of class to ensure you know how to navigate it once the semester begins. You can access your own account at live.wilkes.edu. Your username and password are the same as your login credentials for the Wilkes Portal.

Watch out for a LIVE/D2L session led by the e-Mentors during Welcome Weekend. They'll walk you through the platform and answer any questions you may have!

OFFICE OF ACADEMIC SUCCESS

The Office of Academic Success, located in Conyngham Hall, is a valuable resource for all students. Within our office, students are able to access a variety of resources including Academic Support and Advising Services that can help them on their academic journey.

OUR ACADEMIC SUPPORT SERVICES INCLUDE:

- Peer tutoring sessions
- One-on-one student skill building opportunities with a learning specialist
- Navigating declaring a major
- Support to all students and faculty within their designated colleges

Scan for the academic support request form.



THE OFFICE OF ACADEMIC SUCCESS ALSO HOUSES OUR DISABILITY SUPPORT SERVICES.

Disability Support Services (DSS) is committed to providing equal educational opportunity for all students who meet the academic admission requirements. In order to receive accommodations, students must provide appropriate documentation of their disability.

For more information, please contact katy.betnar@wilkes.edu.

Scan for more information.



FIRST AT WILKES

WHAT IS A "FIRST-GEN" COLLEGE STUDENT?

A student whose parent(s) or guardian(s) did not complete a four-year bachelor's degree

DID YOU KNOW?

- 47% of the Wilkes student population are first-gen.
- More than half of Wilkes' incoming class - approximately 53% - are first-gen.
- 1/3 of college students across the nation are first-gen

FIRST-GEN TIPS FOR SUCCESS

- Ask questions
- Get connected
- Use campus resources
- Visit faculty office hours
- Ask for a mentor
- Stay organized
- Take care of yourself
- Celebrate your progress

FIRST-GEN SUPPORT AT WILKES

- First-Gen Celebration Week events, including student, staff, and faculty panel, game night, and t-shirt and candy giveaways
- First & Forward: A Career Readiness Event
- First at Wilkes Mentorship Program
- Academic Advantage Workshop Series

First at Wilkes Coordinator:
tamara.moules@wilkes.edu



First at Wilkes



Office of Academic Success

SAVE MONEY AND FINISH YOUR DEGREE ON TIME!

DID YOU KNOW?

You need at least **120 completed credits** (some majors require more) to graduate from Wilkes in four years.

LET'S DO THE MATH

Fall	Intersession	Spring	Summer	On-Time
12	+ 3	+ 15	+ 0	= 30
15	+ 0	+ 12	+ 3	= 30
12	+ 3	+ 12	+ 3	= 30
15	+ 0	+ 15	+ 0	= 30

Whether you take credits over the Fall, Intersession, Spring, or Summer, make them add up to 30 (or more) per year to stay on track! Remember to consult the University Bulletin and your advisor.

Contact the Office of Academic Success for more information.

MAKE WILKES YOUR HOME!

COMMUTER LIFE

GETTING TO KNOW OTHER COMMUTERS

COMMUTER COUNCIL

Commuter Council (CC) is made up of officers and members all working towards the common goal of making commuter life fun and keeping you involved with campus happenings. All members are commuters, whether traveling from a nearby off-campus apartment or miles away. CC provides many activities midday to allow commuters to get together and hang out between classes and is open to feedback for other ways to keep commuters connected. The Council works closely with the Office of Student Life, Student Government and the other Mega Councils. Commuter Council organizes social and educational activities. Meetings will be posted at the beginning of each semester and will take place in the Commuter Lounge.

THE COMMUTER LOUNGE

The Commuter Lounge is located in the basement of the Eugene S. Farley Library. Students need to use their Wilkes ID to access the room. Hours for the lounge are 7 AM - 10 PM. The Lounge provides a place for students to hang out in between classes and provides resources: two large conference style tables, three computers, a printer, dry-erase board, coffee and tea station and a mini-fridge.

COMMUTER TIPS

WILKES ALERTS

Be sure to sign up for the Wilkes Emergency Alert on your phone. Students can sign up by logging onto their portal and clicking the red Emergency Notification System box on the right side of the screen. Follow the instructions to receive notifications about weather-related closings and other announcements.

ALWAYS BE PREPARED

CONSIDER KEEPING IN YOUR CAR:

- Umbrella
- Ice scraper/small snow shovel
- Hoodie/Jacket
- Change of clothes/shoes
- Phone charger
- Snacks/water bottle
- Tissues
- Blanket

OTHER COMMUTER ADVICE:

- Check your email before leaving to come to campus in case one of your classes gets canceled, a professor sends a time-sensitive announcement, etc.
- Make sure to leave with extra time when coming to campus. Account for how long it takes to find a parking spot, walk through campus and get to your classroom.
- Breaks between classes can be used for events, studying or down-time.
- Join clubs and organizations to get involved and find what you like to do.
- Check out all of the local spots to eat.

PARENT AND FAMILY PORTAL

Wilkes University has a great way to stay involved with your student and receive news from our school. Sign up for our parent portal using the QR code, if you are not signed up already. This portal is your one-stop shop for access to important campus news and deadlines, personalized newsletters on your schedule, announcements via email and more.

RESIDENCE LIFE

I'M MOVING IN! WHAT SHOULD I BRING?

Save space for yourself and your roommate by packing only the essentials. Here are some things you will want to consider when packing up in August:

CONSIDER BRINGING:

- Bathrobe
- Bedding (sheets - twin XL, blankets, pillows)
- **Cleaning Supplies**
- Command/3M Strips
- Computer
- Desk Lamp
- Fan
- Flashlight
- Garbage Can
- Hangers
- Laundry Supplies (basket, detergent, etc.)
- Microwave (strongly encourage to rent)
- Shower Tote
- Snacks
- Surge-Protected Power Strip
- TV
- Towels
- Umbrella
- Vacuum

PLEASE LEAVE AT HOME:

- ✗ Air Conditioners
- ✗ Beer Pong and other alcohol paraphernalia
- ✗ Dart Boards
- ✗ Electric Blankets
- ✗ Extension Cords
- ✗ Pets
- ✗ Wick Burning Candles
- ✗ Toaster Ovens
- ✗ Other small appliances (air fryers, instant pots, blenders, etc...)

RESIDENCE LIFE STAFF

Worried about navigating residence life? We're here to help.

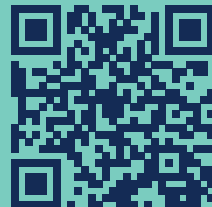
Resident Assistants (RAs) are assigned to each mansion or area of a residence hall to work directly with you, the residents. An RA is an undergraduate student who is trained in issues of crisis and conflict management, listening and mentoring to help you navigate college life. They are experiencing college life with you, so reach out.

Hall Directors are professional staff members experienced in helping college students develop in their time on campus. These full-time staff members live and work in the halls to develop a community that will help you be successful. They supervise the RAs and work with facilities to make sure everything is working correctly in your room.

CONTACT

reslife@wilkes.edu
570-408-4350
wilkes.edu/reslife

You can also visit our office on the second floor of the **Max Roth Center**.



EDDIE'S MAILROOM

Eddie's Mailroom provides a wide range of shipping solutions, from First Class postage stamps to Priority and Media Mail, as well as UPS and USPS services. Our experienced staff is here to guide you in choosing the shipping option that best fits your needs

We're also a convenient pre-paid drop-off location for USPS, FedEx and UPS. Simply bring your package to the front window, and we'll make sure it gets to the right carrier for you.

Residents will be assigned a unique 'mailbox' number, which will be provided along with their room keys. This number will be used to identify your mail and packages, but no physical mailboxes will be used. You will receive an email notification once your mail or package has been received at the Mailroom. **Mail can be picked up at Eddie's Mailroom, located on the second floor of the Henry Student Center, between 8:30 AM - 5 PM, Monday through Friday. Please have your ID card ready when picking up your mail.**

Due to the high volume of mail and packages received daily, all items must be sent to the University address listed below. Physical addresses for the residence halls should not be used. Using the incorrect address may result in delayed or lost mail and packages.

USE THIS ADDRESS FORMAT:

(Your Name)
Wilkes University
(Your Box #)
84 W. South St
Wilkes Barre PA 18766

Both your name and box number must be on all mail or packages. The name must match the name assigned to that box.

If you have any questions, please contact the Mailroom at mailroom@wilkes.edu.

LIBRARY RESOURCES

The Eugene S. Farley Library, named in honor of the first president of Wilkes University, is located at the heart of the Wilkes campus at the corner of South Franklin and West South Streets. It is abundant with resources including over 175,000 print books, 250,000 e-books and more. Students can use the library for studying, researching or socializing. Students are able to access a variety of tech needs and have support from the help desk and several tools online.

The library houses several University resources centers including:

- The University Archives
- The Writing Center
- The Information Technology Help Desk
- Alden Learning Commons (available 24/7 during regular school hours and accessible via WIN swipe card system)

Library resources and services are available at wilkes.edu/library and by phone at **570-408-4250**.

HEALTH & WELLNESS

PHYSICAL HEALTH

The Wilkes University Health and Wellness Services office provides routine health services for all students and is staffed by a certified registered nurse practitioner and a registered nurse. Its mission is to provide care, education and advocacy to improve the health and well being of its students. Referrals are made to local physicians as deemed necessary.

All students (on- and off-campus; full- and part-time), are eligible for health care and related counseling at the Health Services Office. Only emergency care will be provided to visitors.

MENTAL HEALTH

**WILKES UNIVERSITY COUNSELING CENTER
PASSAN HALL, SECOND FLOOR**

570-408-4100

Hours: Monday-Friday, 8:30 AM - 4:30 PM

Counseling is an opportunity for students to discuss personal concerns and explore ways of working through issues such as stress, anxiety, depression, grief, identity issues, eating issues, interpersonal conflicts and substance abuse. All undergraduate students (on-campus, off-campus, full-time and part-time) are eligible for free and confidential counseling. Counseling services are available both in person and via Telehealth. Students can **schedule an appointment Monday through Friday, 8:30 AM - 4:30 PM** by calling **570-408-4100** or emailing **counseling@wilkes.edu**. The **Wilkes University Support Line 570-408-CHAT (2428)** is also available 24/7 for any student in crisis. The CHAT line is staffed with skilled clinicians who are trained specifically in college student mental health.

COLONEL'S CUPBOARD

The Colonel's Cupboard is an on-campus food pantry open to the entire Wilkes community. The Cupboard is run by the Office of Civic Engagement and provides students, staff and faculty with resources to stock up on groceries or grab a snack. There is no income requirement to utilize the Cupboard and it is open five days a week during the semester and on a modified schedule during breaks. **Scan the QR code to learn more.**



BILLING & PAYMENT INFO

STUDENTS MUST HAVE FINANCIAL CLEARANCE BY AUGUST 17 TO BEGIN CLASSES FOR THE FALL SEMESTER.

Wilkes requires that all students obtain financial clearance at least two weeks prior to the start of classes or they may be deregistered. Financial clearance can be obtained in the following ways:

- 1. Pay your balance in full.** Pay with an electronic check (no service fee added) or credit card (3% service fee added) on the Wilkes Portal at portal.wilkes.edu. Pay by check and mail to Wilkes University Student Lockbox, PO Box 824696, Philadelphia, PA., 19182-4696. Pay in person at the Bursar's Office in Miller Hall.
- 2. Apply for and receive financial aid.** Have an approved financial aid award or loan that equals or exceeds the account balance for that semester.
- 3. Enroll in our online installment payment plan.** The first installment is due on August 15 for fall classes, January 15 for spring classes and June 1 for summer classes.
- 4. Submit a signed deferment agreement.** Submit a signed employer or third-party payment agreement, which includes payments from foreign governments. Forms are available on the student page of the Wilkes Portal.

AUTOMATED PAYMENT PLAN

The Installment Payment Plan allows a student to pay the account balance monthly. Students may enroll at the beginning of each semester and installments are as follows:

Fall Semester	Five payments beginning on August 15
Spring Semester	Five payments beginning on January 15
Summer Semester	Three payments beginning on June 1

TO ENROLL:

- Sign onto the Wilkes website at portal.wilkes.edu
- Enter username and password
- Select "Student" tab > "Student Services"
- Under "Tuition and Billing", select "Payment Plans"
- Please follow instructions on the screen

The payment plan amount is calculated based on the balance at the time of enrollment. Any changes to registration will automatically change the payment amount. Emails will notify you of any payment changes.

If you have questions, please call 570-408-4960. For login problems, please call the Help Desk at 570-408-4357.

BURSAR'S OFFICE
Miller Hall
32 W. South Street
570-408-4960
billing@wilkes.edu

FINANCIAL AID OFFICE
Capin Hall
165 S. Franklin Street
570-408-4512
financialaid@wilkes.edu

View your invoice, make a payment, enroll in the payment plan or add an authorized user by visiting the "Tuition and Billing" section on the "Student Services" page of the Wilkes portal: portal.wilkes.edu



For more information,
scan the QR code.

FINANCIAL AID

As you prepare to begin your Fall semester, the Office of Student Financial Services wants to provide information on additional financing options that may help cover your educational expenses beyond the federal student loans included in your financial aid offer.

FEDERAL DIRECT PARENT PLUS LOAN

The Federal Direct Parent PLUS Loan is a credit-based federal loan that your parent may apply for to help cover educational expenses not already covered by your financial aid. Eligible parents may borrow up to \$20,000 per year per dependent student, with a lifetime borrowing limit of \$65,000 per student.

To apply for a Parent PLUS Loan:

1. You must have a completed FAFSA on file.
2. Your parent (the borrower) will log in to StudentAid.gov using their FSA ID.
3. Your parent completes the Parent PLUS Loan Application.
4. Your parent completes the Parent PLUS Master Promissory Note (MPN).

PRIVATE STUDENT LOAN OPTIONS

Private student loans are available through banks, credit unions, and other private lenders. These loans are credit-based and may require a co-signer. When comparing private loan options, families should review:

- Interest rates (fixed vs. variable)
- Repayment terms
- Co-signer requirements
- Borrower benefits and repayment options

Students and their families may apply through the private lender of their choice, including banks, credit unions, or through **ElmSelect.com**. Wilkes University does not maintain a preferred lender list and does not endorse any specific lender. Once approved, the lender will send the certification request directly to the university.

WILKES UNIVERSITY PAYMENT PLAN

Wilkes University offers a semester-based payment plan that allows students and their families to divide full or partial balances into five equal monthly payments for both the fall and spring semesters. The plan has no interest charges, though a \$25 enrollment fee applies each semester. Enrollment for the Fall 2026 payment plan begins July 8, 2026, through the student portal and must be completed prior to the start of the semester. The payment plan may be used alone or in combination with educational loans.

FEDERAL STUDENT LOAN REQUIREMENTS

If you have been offered Federal Direct Subsidized or Unsubsidized Loans as part of your financial aid package, first-time federal student loan borrowers must complete the following requirements before funds can disburse:

1. Complete Entrance Counseling.
2. Complete the Master Promissory Note (MPN).

Both requirements can be completed online at **StudentAid.gov** using the student's FSA ID login. Please note that federal student loans will not appear as pending aid on the student bill until these requirements have been completed.

If you have any questions regarding financing options or completing these requirements, please contact the Office of Student Financial Services at **financialaid@wilkes.edu** or **570-408-4512**. Our office is located in Capin Hall on the 2nd floor.

WORK STUDY 101

GAIN EXPERIENCE, EARN \$\$\$

Part-time employment opportunities exist both on-campus and off-campus through the federal work study and institutional work study programs.

FEDERAL WORK STUDY (FWS)

- Subsidized by the federal government
- Financial need-based as determined by the FAFSA
- On-campus part-time jobs
- Off-campus approved community service part-time jobs
- Completed FAFSA verification requirements, if selected

VIEW JOBS AND APPLICATION PROCEDURES:

wilkes.edu/studentjobs

QUESTIONS? CONTACT:

Kimberly Mazur, Financial Aid Counselor
workstudy@wilkes.edu
570-408-5902

INSTITUTIONAL WORK STUDY

- Funded solely by the University
- Not required to demonstrate financial need
- On-campus part-time jobs

JOB APPLICATION AND NEW HIRE DOCUMENTS:

wilkes.edu/workstudyforms

Original forms of ID required - see form I-9 list of acceptable documents. Documents must be completed and approved prior to beginning work.

Scan for more information
about Paying for College



CENTER FOR CAREER DEVELOPMENT & INTERNSHIPS

We invite students to come to the Center for Career Development & Internships to start their Career Success Plan during their first year at Wilkes. We help students with deciding on majors, clarifying career goals and exploring opportunities outside of the classroom. We assist with job/internship applications, interviewing, and resumes. Our internship director assists students in attaining cooperative education and experiential opportunities specific to their majors.

Wilkes University utilizes Handshake as a one-stop virtual platform for students to connect with employers, job/internship postings, career and internship and graduate School Fairs, as well as virtual events. The Center uses Handshake to engage students with our professional staff to support them in their career development, do register during Welcome Weekend at www.joinhandshake.com.

THE COLONEL CORNER

MORE THAN A BOOKSTORE

Serving as a one-stop shop right here on campus, the Colonel Corner is conveniently located on the first floor of the Henry Student Center. The Colonel Corner will fulfill your needs ranging from supplies that are essential for success to merch for showing off school spirit. FLEX dollars are accepted.



COLONELS ARE COVERED

We are excited to announce the “Colonels Are Covered” program for all full-time, undergraduate students, which provides free textbooks with tuition. Scan the QR code to find out more.

Follow us on Instagram @wucolonelcorner.

THE OFFICE OF DIVERSITY INITIATIVES

The Office of Diversity Initiatives (ODI) welcomes the opportunity to assist students with personal, academic and career concerns that impact their academic success. These services are intended to help students successfully complete their degree program. This may include managing roommate conflicts, resolving a bursar balance, understanding university holds or faculty/student conflict resolution.

The ODI can assist students in a variety of areas such as:

- Adjustment to life as a college student in the Wilkes-Barre area
- Navigating the college experience as a first-generation student
- Interpreting University policies and procedures
- Understanding major admission requirements

Visit the ODI at the Max Roth Center on the corner of South Franklin and West South Streets or call **570-408-7856** to schedule an appointment. **Scan the QR codes for more information.**



UNIVERSITY POLICE

THE WILKES UNIVERSITY POLICE DEPARTMENT PROVIDES A SAFE PLACE FOR MEMBERS OF THE CAMPUS COMMUNITY TO LIVE, LEARN, TEACH AND WORK.

We serve as the first responders and the primary safety resource for the Wilkes campus and our surrounding community. We currently have ten police officers, eight public safety officers and seven dispatchers on staff to provide 24 hour coverage, 365 days a year. Our services include:

CAMPUS PATROLS

Uniformed officers keep the campus safe by conducting around-the-clock patrols of University grounds and buildings. You will see us travel by foot, bicycle and vehicle. Members of the Wilkes University Police Department are always in full uniform and readily identifiable.

SAFE POLICE ESCORTS

Officers are prepared to escort and accompany students through campus at any time of the day or night. We also provide a safe ride to a wide area around campus through the Colonel Connector. Read more about the Colonel Connector below.

EMERGENCY REPORTING AND SECURITY MONITORING

Fifty emergency call boxes located around campus immediately connect members of the community to our 24/7 communications center. In addition, Wilkes has more than 220 closed-circuit cameras allowing us to continually monitor public spaces on campus. Our Wilkes Shield safety app allows students to request emergency assistance with the click of a button. Read more about Wilkes Shield below.

EMERGENCY NOTIFICATIONS

By signing up for emergency alerts, members of the Wilkes community are notified by text and email of emergencies on and around campus in which they should be aware. Our text updates also announce school delays or closings in the event of inclement weather.

Sign up for text alerts at wilkes.edu/campus-life/safety-security.

FIRST RESPONSE

Each officer has been trained in emergency medical procedures, first aid and CPR. We collaborate with area first responders, including the Wilkes-Barre Police Department, to dispatch additional assistance as required. Wilkes University police have arrest powers and serve as the primary law agency at the University. Minor offenses involving Wilkes students and University rules and regulations are referred to Office of Academic Success for disciplinary action.

The Wilkes University Police Department is located on the ground floor of 148 S. Main Street.

In the event of an emergency, always call 570-408-4999 for assistance. Requests that are not an emergency, can be requested by calling 570-408-4377.

SIGN UP FOR TEXT ALERTS

Visit wilkes.edu/wilkesalert or download **Wilkes Shield** in the App Store or Google Play.

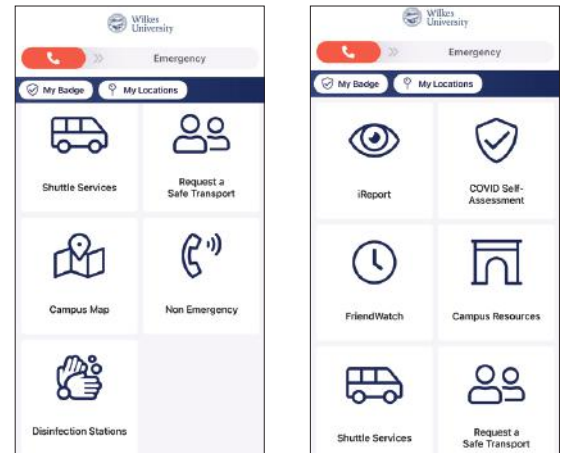


WILKES SHIELD

Access safety tools and campus information by downloading the free Wilkes Shield app.

LET'S EXPLORE THE SAFETY APP

- Touching the Emergency button will open options for who you'd like to call. Touch either option to be connected.
- Immediate need for Police/Fire/EMS should be directed to 911. We monitor 911 Channel for calls and will respond.
- 911 calls made in our geo-fenced area on and around campus will send a message to our Communications Center.
- Do not "test" to see if the app is working – you will be connecting to 911!



THE COLONEL CONNECTOR

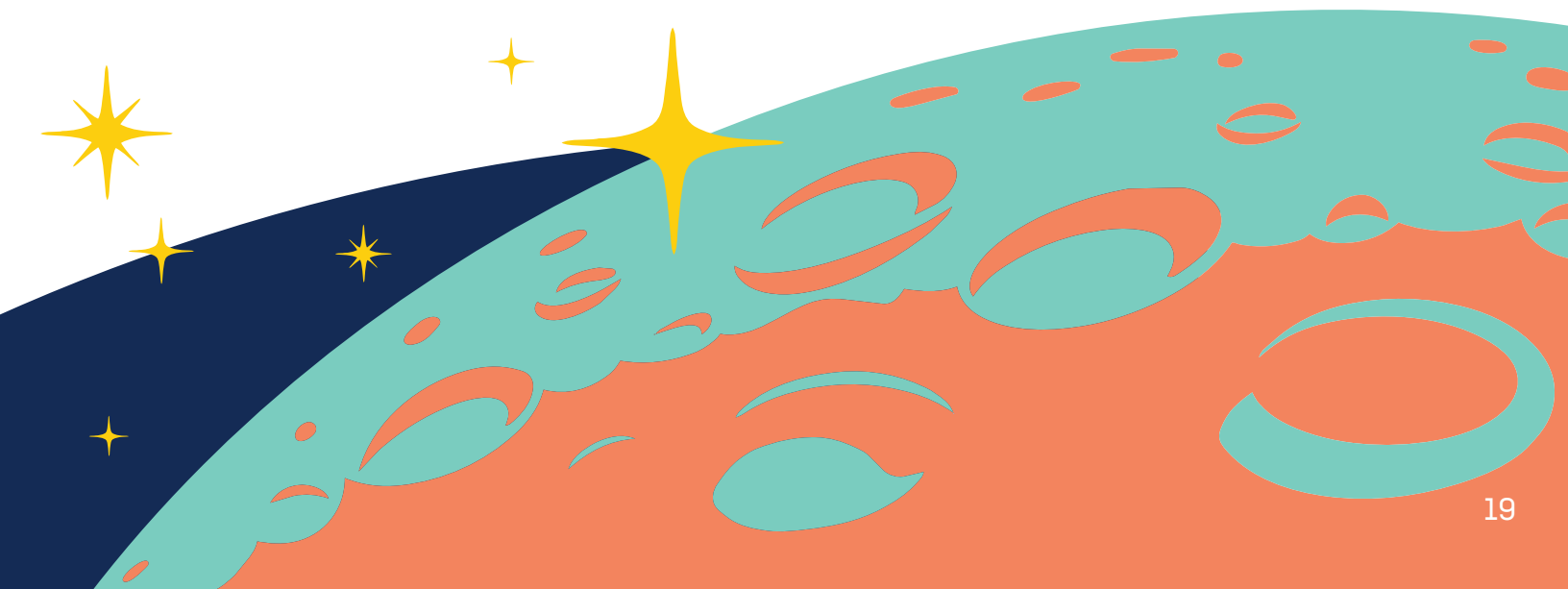
The Colonel Connector provides campus members with safe transportation escorts to a wide area around campus. This service operates from 5 PM to 11 PM, Monday through Saturday, through the fall and spring semesters.

The Colonel Connector is a clearly marked Wilkes University vehicle, operated by a Public Safety Officer. A student may bring a guest. Guests are required to present identification when boarding. For more information please visit: wilkes.edu/campus-life/safety-security.

PARKING

- All Wilkes lots are posted as either Faculty/Staff/Commuter lots or Resident Student Lots. Parking in any University lot requires a University Parking permit. Vehicles without permits are subject to ticketing and/or towing.
- Unless noted, the lots are open for parking without a permit after 4:30 PM until 7 AM the following day. Parking without a permit is also allowed on the weekends.
- Students accounts are billed for outstanding violations. Repeated violations of campus parking regulations will result in the termination of parking privileges.
- The city has metered parking around the campus. They are responsible for the enforcement and maintenance of the meters.
- Questions about parking? Contact **570-408-7275**

The Department offers this training several times a year, specifically upon request of residence halls and various campus and community groups. If interested, please contact the Lieutenant of Support Operations at **570-408-4982**.



GET INVOLVED @ WILKES!

There are limitless possibilities when it comes to clubs and involvement on campus. You can pursue new interests, nurture old ones and find people to share them with.

BENEFITS OF INVOLVEMENT

- Eases the transition from high school to college
- Explore and expand both new and old skills or interests
- Expect to become a better leader, learner and citizen
- Engage with other Colonels who can become lifelong connections

WAYS TO GET INVOLVED AT WILKES:

- Visit the Office of Student Development located on the first floor of the Henry Student Center
- Join Wilkes Adventure Education and explore the outdoors
- Attend a concert, program and event on campus
- Volunteer with Civic Engagement and the Bonner Leader Program
- Talk to your e-Mentor, RA or classmates
- Check Wilkes Today & your Wilkes email
- Suitable – Student engagement platform and activities calendar

Go to wilkes.edu/campus-life to find out more.



CLUB DAY 2026

EXPLORE THE OPPORTUNITIES THAT AWAIT!

**THURSDAY SEPT. 10TH 11 AM - 1 PM
(CLUB HOURS) - ON THE GREENWAY**

Wilkes has over 80+ clubs for you to join.
From Ultimate Frisbee to Biology, to Space & Astronomy and WAE,
Club Day is the best way to explore all the opportunities we have lined up.
Come see what we have to offer!

CLUBS & ORGANIZATIONS

COLLEGE OF ARTS & SCIENCES

Chamber Orchestra
Choral Club
Civic Band
Games And Media Club
The Beacon
Speech and Debate
Studio 20
Zebra Communications
WCLH 90.7
WilkesNow!
Crim & Soc Club
Psychology Club
Biology Club
Chemistry Club
Ecology Club
GeoExplorers
Math/CompSci Club
Neuroscience Club
Pre-Professional Health Society
Pre-Vet Club
History Club
Manuscript Club
We're Empowered by Science (WEBS)

COLLEGE OF HEALTH & EDUCATION

Academy of Managed Care Pharmacy (AMCP)
American College of Clinical Pharmacy (ACCP)
American Pharmacist Association Academy of Student Pharmacists
American Society of Health System Pharmacists (ASHP)
Christian Pharmacists Fellowship International (CPFI)
Lambda Kappa Sigma- Alpha Phi Chapter
Pennsylvania Pharmacists Association (PPA)
Pre-Pharmacy Club
Rho Chi- Wilkes Pharmacy Honors Society
Student National Pharmaceutical Association (SNPhA)
Nursing Student Organization (NSO)
Society of Student Nurses (SSN)
Education Club

COLLEGE OF BUSINESS & ENGINEERING

Finance and Investment Club
Hospitality Leadership Club
Air and Waste Management Association (AWMA)
American Society of Mechanical Engineers (ASME)
Institute of Electrical and Electronics Engineers (IEEE)
Pennsylvania Society of Professional Engineers
Society of Automotive Engineers (Mini Baja)
Society of Hispanic Professional Engineers (SHPE)
Sports Management Club
Future Business Leaders of America- Phi Beta Lambda
Society of Women Engineers (SWE)

CULTURE, DIVERISTY, FAITH & SPIRIT

Black Student Union
Christian Fellowship Club
Christian Pharmacists Fellowship International (CPFI)
Multicultural Student Coalition (MSC)
Spanish Club
Student Organization of Latinos (SOL)
Gender and Sexuality Alliance Club

STUDENT ORGANIZATIONS

Army ROTC
BACCHUS
College Democrats
Commuter Council
Gold Bar
Programming Board (WUPB)
Residence Hall Council (RHC)
Morgan's Message
NAMI
Space and Astronomy Club
Student-Athlete Advisory Committe (SAAC)
Student Government

COMMUNITY ENGAGEMENT

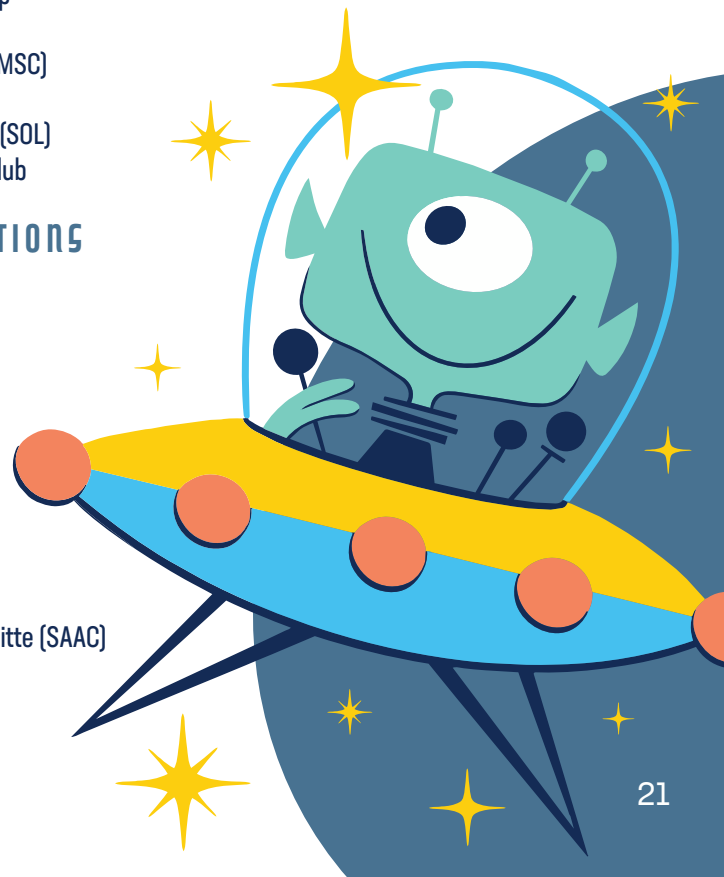
UNICEF
Veterans Council
Alternative Spring Break (ASB)
Alternative Fall Break

SPORTS & SPECIAL INTEREST

Animal Welfare Club
Cheerleading
Dance Team
Fly Fishing Club
Equestrian Club
Wilkes Adventure Education (WAE)
Wilkes Ski and Snowboard
Wilkes University Ultimate Frisbee Club

MEGA COUNCIL

Programming Board (WUPB)
Student Government (SG)
Multicultural Student Coalition (MSC)
Residence Hall Council (RHC)
Commuter Council (CC)



MEGA COUNCILS

STUDENT GOVERNMENT

Student Government (SG) serves as a sounding board for students' concerns on campus. SG formulates the student activities budgets and approves fund requests for all clubs. It is also responsible for the coordination of some of the largest events on campus and within the community. SG collaborates with the leaders of other prominent groups on campus to ensure that the best experience is available to our family of Colonels. Elections take place early on in the fall semester, so consider running for a position! **For more information, feel free to reach out to studentgovernment@wilkes.edu.**



PROGRAMMING BOARD

Wilkes University Programming Board (WUPB) is a great way for all students to get involved on campus. Help run and plan events such as bingos, giveaways, game show nights, concerts and so much more. If planning events isn't for you, you can still participate in our fun events every Thursday night, so mark your calendars! **If you have any questions, please email wupb@wilkes.edu and scan the QR code to follow us on Instagram @wilkesupb!**



MULTICULTURAL STUDENT COALITION

The Multicultural Student Coalition (MSC) is a group of students dedicated to spreading diversity here on campus and in the Wilkes-Barre community. MSC looks to get students more involved in campus activities and collaborate with other MEGA Councils. Make sure to check out the annual MSC Talent Show, the One World Party, speakers and more. **For more information, email msc@wilkes.edu.**



COMMUTER COUNCIL

Commuter Council (CC) members all work towards the common goal of making commuter life fun and involved with campus happenings. All members are commuters, whether traveling from a nearby off-campus apartment or miles away. CC provides many activities midday to allow commuters to get together and hang out between classes and is open to feedback for other ways to keep commuters connected. **If you have any questions, please email commuter@wilkes.edu.**



RESIDENCE HALL COUNCIL

The Residence Hall Council (RHC) consists of elected representatives from each campus residence hall. Its major function is to deal with the concerns of resident students—policy, parking, maintenance, etc.—and to present these concerns to the administration. RHC holds events such as Movie Night, Trivia Night and Study Break. RHC also works closely with other MEGA councils to plan campus-wide social events and activities. All students are welcome to attend RHC meetings and/or serve as a member of one of its committees. **For more information, feel free to reach out to rhc@wilkes.edu.**



HONORS & LEADERSHIP PROGRAMS

BONNER LEADER PROGRAM & CIVIC ENGAGEMENT

Community service. Community collaboration. At Wilkes, these aren't just buzzwords. They're part of who we are as an institution, with students, clubs, athletics, faculty, staff and administrators all getting involved to better understand the root causes and interconnectedness between societal issues. We move students beyond volunteerism to understand the power of collaboration with community partners and help you make it a priority in your values and actions.



Students have the opportunity to serve their community throughout the semester by getting involved with service. They can get involved with the local Habitat for Humanity chapter, provide much-needed support at food distributions and tutor elementary school students. Interested in doing something else? Have a conversation with the office to create the opportunity that makes you excited to give back.

The Bonner Leader Program provides financial support for your education through federal work study. This unique opportunity blends community service with leadership development training throughout your four years of undergraduate studies. Use the QR code to check out what we've been up to on our Instagram.



When you commit to participate as a Bonner Leader, you will access the following benefits:

- Cohort-based leadership workshops
- Trips dedicated to community service
- Working closely with community partners to serve more people
- One-on-one mentoring throughout the program
- Financial stipend in addition to work study pay



Applications are still being accepted for Fall 2026! Stop by our table at the resource fair to learn how you can get involved and apply today. **Scan the QR code for more information.** To find out more, visit wilkes.edu/bonner.

HONORS AND BARRE SCHOLARS PROGRAMS

Are you a student looking for exceptional opportunities to set yourself apart from the crowd and challenge yourself academically? If so, then we invite you to explore Wilkes University's prestigious Barre Scholars Program. Focused on academic distinction and opportunity, these elite scholars will take advantage of enhanced educational offerings such as:

- Faculty-led reading and research groups
- An escalating scholarship for as long as you remain in the program
- Priority access to non-federal work-study opportunities
- Eligibility to apply for the Isaac Barre Prize for academic achievement in graduation year

Those invited to the Barre Scholars Program were notified in their portal and must declare their intent to enroll.

Qualified students may participate in both the Barre Scholars Program and the Honors Program. Applications for the Honors Program are currently closed. When they are available, they can be accessed here: wilkes.edu/honors. To view qualifications, go to: wilkes.edu/academics. If you have any questions about the program, contact jennifer.mclaughlin1@wilkes.edu.



**VISIT US ON
INSTAGRAM!**

WHERE WILL WILKES TAKE YOU?

UNFORGETTABLE ADVENTURES AWAIT

NEPA NEIGHBORHOOD DESTINATIONS

- The Lands at Hillside Farms: Environmental Science 105
- NEPA Community Service Projects: Habitat for Humanity and PAK Food Distributions, Civic Engagement
- Classroom Visits: Education Department
- Galen Glen Winery: Chemistry 398
- Wilkes Barre/Scranton Penguins Games: Student Development

STATESIDE EXPERIENCES

- Give Kids The World Village - Kissimmee, Florida: Honors Program
- New York City: Commuter Council
- Corning Museum of Glass - Corning, New York: Chemistry Club
- THEREPS Conference - Las Vegas, Nevada: Hospitality Leadership
- Joshua Tree and Yosemite: Wilkes Adventure Education
- Southwest, US: GeoExplorers Club
- Hawaii: Bonner Leader
- Tacoma, Washington and Washington, D.C., Alternative Spring Break

GLOBAL GETAWAYS

- Costa Rica: Political Science/Biology
- Scotland & Ireland: Political Science/History
- France: Chemistry
- Italy: Men's Soccer
- Cabarete, Dominican Republic: Alternative Spring Break



SORDONI ART GALLERY

STUDENT POWERED, SAC APPROVED



The Sordoni Art Gallery is a different kind of classroom. Our state-of-the-art exhibition space is where you can see art made by world-famous artists, learn things you never knew before from artists themselves and even make your own creations during our various workshops and events. Our mission is to encourage an appreciation of the arts and an understanding of its role in society through direct engagement with art. Our main focus is to present high-quality exhibitions, related programming and publications in a wide range of media, topics, cultures and time periods.

Want to get involved? The four easiest ways is to walk through our doors. We host 4 exhibitions a year and are open 6 days a week. It's a great way to spend a few minutes in between classes. **Want to know more?** All of our events are free for students. Every lecture, workshop and film screening is for you. We even host free yoga classes! Follow us on Facebook and Instagram [@sordonigallery](#) for updates.



Is that not enough? Maybe you want to join our staff! Students perform many roles at the gallery from gallery attendant, to social media ambassador, to student designer. You can get paid and support the arts at the same time. We are located in the Karambelas Center. Come visit!

For more information, visit wilkes.edu/sordoniartgallery or contact heather.sincavage@wilkes.edu with questions. Follow us on Instagram and Facebook [@sordoniartgallery](#)

WILKES ADVENTURE EDUCATION

Wilkes Adventure Education (WAE), is experiential learning and strives to cultivate, encourage and develop self-awareness, hard and soft skills, environmental stewardship and an overall sense of wellness. The program's objective is to introduce participants to fun, engaging experiences both indoors and outdoors, so they may learn through trying, doing and practicing in a supportive culture. WAE includes the rock wall and ropes course, and WAE Series outings.

For more information, contact jill.price@wilkes.edu



DINING LOCATIONS

HENRY'S DINING HALL - Exceptional food, employees and environments are at the heart of Henry's Dining Hall. We're serving a diverse international menu with frequent seasonal menu changes.

RIFKIN CAFE - Freshly prepared sandwiches, burgers and chicken sandwiches await you at Burgers + Fries (B+F) and Which Wich!

STARK LEARNING CENTER - Home to Greens to Go and the P.O.D. Market.

- **GREENS TO GO** - Featuring a selection of seasonal salad greens, toppings, proteins, and gourmet dressings for salads and wraps, our salad experts will carefully craft your selection to your exact specifications.
- **P.O.D. MARKET** - Combines the neighborhood corner store with modern conveniences right in the heart of campus. The P.O.D. market also features grab n' go options for breakfast, lunch and dinner, including sushi!

STARBUCKS AT GAMBINI'S - Enjoy hand-crafted espresso beverages, refreshers, teas and delicious pastries and sandwiches! We accept Starbucks gift cards, too.

Resident students select their meal plans at the time of completing their housing contract. To purchase a commuter meal plan, visit the **Wilkes Portal**. In the portal, select Student Services, then Housing and Dining. If you are a commuter and wish to purchase a Colonel plan, send your emailed request to studentmeals@wilkes.edu. For more information, view our dining provider website and/or contact us by phone at **570-408-3993** or by email at studentmeals@wilkes.edu.

COME JOIN THE FOOD ADVISORY BOARD (FAB)!

FAB is a great opportunity to share your thoughts and ideas with Wilkes Dining Services, help improve the dining experience and be first to know about upcoming themes and special events. We meet three times per semester over lunch - bring your friends and your appetite. We'd love to hear from you!



DINING FAQS

What plans are offered to commuter students?

Commuter students may choose from the Colonel plans offered to resident students, add only Dining Dollars/Flex Dollars to their account or choose a Commuter Meal Plan. All Commuter Meal Plans are available for purchase on the Wilkes Portal page under Student Services.

How do I keep track of the amount of Dining/Flex Dollars I have left?

You may check your dining/flex balance using the GET Mobile: ID Card Management app at any time. Also, any dining services cashier will be able to tell you what your current balance is, or you may email studentmeals@wilkes.edu with your request.

If all of the Dining/Flex Dollars are not used at the end of the semester, can they be carried over to the next semester?

Unused Dining/Flex Dollars will be carried over from the Fall semester to the Spring semester, but are not carried over to the next academic year. At the end of the Spring semester, all unused Dining/Flex dollars will be eliminated and are not refunded.

WELCOME WEEKEND & MOVE-IN DAY

Welcome Weekend is a three-day program for all residential and commuter students prior to the first day of classes. Welcome Weekend acts as an extension of orientation where students will attend informational workshops, socialize with their peers and interact with campus leaders. Have an out-of-this-world adventure as you navigate campus and college life with your e-Mentor as a guide.

Students can visit wilkes.edu/welcome for the latest information on Welcome Weekend.

MOVE-IN DAY: THURSDAY, AUG. 27, 9 AM-4 PM


**YOUR MOVE-IN TIME WILL BE BASED ON YOUR ASSIGNED E-MENTOR.
BE SURE TO CHECK YOUR WILKES EMAIL FOR DETAILS!**

For updated information about move-in day,
visit wilkes.edu/moveinday.

**BEFORE WELCOME WEEKEND, MAKE SURE
TO CHECK OFF THESE FAR OUT ESSENTIALS...**

- Copy of health insurance card
- Two original forms of identification
- Up-to-date immunizations
- A completed housing contract
- A meal plan selected
- Residence hall/car necessities
- A parking permit, if applicable

FAMILY DAY: SEPTEMBER 26TH



**STAY IN THE
KNOW FOR THE
YEAR AHEAD!**



**SCAN THE QR CODE FOR THE
2026-2027 ACADEMIC CALENDAR.**



ADMISSIONS

- 01 Chase Hall

ATHLETIC FACILITIES

- 02 Bruggeworth Field
- 03 Marts Center & Henry Gymnasium
- 04 Murnson Field House
- 07 Softball Field
- 08 Tennis Courts
- 09 Michale Athletic Center

RESIDENCE HALLS

- 10 40 West (YMCA)
- 11 Catlin Hall
- 12 Doane Hall
- 13 Evans Hall
- 14 Fortney Hall
- 15 Michelini Hall
- 16 Pearsall Hall
- 17 Rikkin Hall
- 18 Ross Hall
- 19 Roth Hall
- 20 Schowitz Hall
- 21 Slocum Hall
- 22 Sterling Hall
- 23 Sturdevant Hall
- 24 Sullivan Hall
- 26 University Towers
- 26 Waler Hall
- 27 Weiss Hall

ACADEMIC BUILDINGS

- 28 Bedford Hall
- 29 Breiseth Hall
- 31 Ceramics Studio
- 32 Cohen Science Center
- 33 Harold Cox Hall
- 34 Date Center for the Performing Arts
- 35 Hollenback Hall
- 36 Kirby Hall
- 37 Alumni & Advancement - 65 W. South Street
- 38 Eugene S. Farley Library
- 39 Stark Learning Center
- 39 Simms Center on Main
- 56 Karamelas Media and Communications Center

ADMINISTRATIVE BUILDINGS

- 30 Capin Hall
- 41 Colonial Corner Campus Store
- 43 Comproppan Hall
- 44 Annette Evans Alumni House
- 46 Henry Student Center
- 47 Miner-Wheat House
- 48 O'Hop Hall
- 49 Passan Hall
- 51 Public Safety Office
- 52 Max Roth Center
- 53 Facilities Building
- 54 Weckesser Annex
- 55 Weckesser Hall
- 57 Miller Hall
- 58 Sordani Art Gallery
- 59 Career Development and Internships

PARKING LOTS

- #1 170 S. Franklin St.
- #2 187 S. Franklin St.
- #3 84 S. River St.
- #4 110 W. River St.
- #5 286 S. River St.
- #6 274 S. Franklin St.
- #7 Barnum Pl./W. South St.

P PARKING

- #8 169 S. Main St.
- #9 10 E. South St.
- #10 148 S. Main St.
- #11 141 S. Main St.
- #12 302 W. Northampton St., Edwardsville

