



WILLIAM CLARKE
COLLEGE
CHRIST OUR WISDOM

COLLEGE UNIFORM



WHERE *EXTRAORDINARY* BEGINS



CONTENTS

Message from the Head of College	3
Preparatory School	4
Primary School – Girls	8
Primary School – Boys	12
Primary School – Sports	16
Secondary School – Girls	20
Secondary School – Boys	24
Secondary School – Sports	28
Accessories	32
Uniform Policy	36
How To Order	39

MESSAGE FROM THE HEAD OF COLLEGE

To join William Clarke College is to join a vibrant community with a rich history. One of the key experiences of being a William Clarke College student is to wear the College uniform. Every time a student puts on their uniform, it is a symbol of their connection to every other student at the College, whether they be students of the past, students at the College right now, or students who will join the College in years to come. The uniform is a tangible reminder to students that they are part of something bigger than themselves.

The uniform is designed to help students identify as members of the community, both to themselves and to the general public. This is one reason we expect students to wear their uniform correctly and take pride in their general appearance. But more than this, we want students to build habits and develop character that they will take with them long after they have left their student days behind them. Wearing the uniform correctly will help them meet expectations, respect boundaries and present themselves well to the world around them.

This booklet outlines the uniform requirements for each area of the College. Our outstanding College Shop staff delight in helping ensure each student has every item they need and that they are the right fit. Please do not hesitate to reach out to them with any questions you have.



A handwritten signature in blue ink, which appears to read 'Alex Koch'.

Alex Koch
Head of College

4 PREPARATORY SCHOOL

UNISEX UNIFORM

REQUIRED



Primary sports polo –
short-sleeved ¹

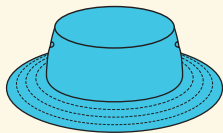
— OR —



Primary sports polo –
long-sleeved ¹



Sports shorts classic ⁵



Prep hat



Prep socks



Sports shoes (any colour) ³



Track jacket
(fleece or microfibre) ²



Track pants
(fleece or microfibre) ²

OPTIONAL



Sports skort (for girls) ⁵



Sports fleece vest



College rain jacket ⁴

Please refer to the following page for all explanatory notes.



6 PREPARATORY SCHOOL

UNISEX UNIFORM

NOTES

There is no formal changeover of summer and winter uniform for the Preparatory School. Students may choose to add warmer items as shown, when necessary. These should be worn in accordance with the Uniform Policy.

1. Polo – students may wear either the long or short-sleeved polo throughout the year.
Long-sleeved undershirts may not be worn under the short-sleeved polo
2. Track separates – when worn together, these separates must be worn in matching fabric,
i.e. fleece items cannot be worn with microfibre items
3. Sports shoes – any colour. Casual fashion shoes and light-up shoes are not acceptable
4. Generic yellow or navy rain jacket alternative is acceptable for Prep to Year 2 students only
5. Tights or leggings cannot be worn under sports shorts or skorts.



PRIMARY SCHOOL

GIRLS UNIFORM – KINDERGARTEN TO YEAR 6

REQUIRED



Primary blouse –
short-sleeved ¹



Primary blouse –
long-sleeved ¹



Full pleat skirt ³



Unisex cardigan ⁷



College socks
(navy with teal trim)

— OR —



Black opaque tights ⁵



Classic black leather
lace-up shoes ⁴



College hat

Please refer to the following page for all explanatory notes.

OPTIONAL



Unisex formal vest



Girls' pants ²



College scarf



College rain jacket ⁶



PRIMARY SCHOOL

GIRLS UNIFORM – KINDERGARTEN TO YEAR 6

NOTES

There is no formal changeover of summer and winter uniform for Primary School girls. Girls may choose to add optional layers to the uniform as needed. These must be worn in accordance with the Uniform Policy.

1. Primary blouse to be worn over the skirt/pants. Long-sleeved undershirts may not be worn under the short-sleeved polo
2. Girls' pants may be worn in place of the skirt
3. Primary skirt length must be worn on the knee
4. Black leather lace-up shoes – buckle or velcro styles are an option for Kindergarten to Year 2 students. Kindergarten to Year 6 girls may wear single strap with a buckle
5. Black opaque tights are to be worn without socks
6. Generic yellow or navy rain jacket alternative is acceptable for Prep to Year 2 students only
7. Cardigan fabric is poly/wool. Poly/cotton option is available for students with allergies or eczema.



PRIMARY SCHOOL

BOYS UNIFORM – KINDERGARTEN TO YEAR 6

REQUIRED



Primary shirt – short-sleeved ¹

— OR —



Primary shirt – long-sleeved ²



Elastic back shorts



Unisex cardigan ⁷



Navy crew socks



Classic black leather lace-up shoes ³



Check College tie (K-Year 5) ⁵



Navy College tie (Year 6) ⁶



College hat

Please refer to the following page for all explanatory notes.

OPTIONAL



Unisex formal vest



Elastic back trousers



College scarf



College rain jacket ⁴



PRIMARY SCHOOL

BOYS UNIFORM – KINDERGARTEN TO YEAR 6

NOTES

There is no formal changeover of summer and winter uniform for Primary School boys. Boys may choose to add optional layers to the uniform as needed. These must be worn in accordance with the Uniform Policy.

1. Shirt must be worn fully tucked in to shorts/trousers. Long-sleeved undershirts may not be worn under the short-sleeved polo
2. Long-sleeved shirt must only be worn with trousers and not shorts
3. Black leather lace-up shoes – buckle or velcro styles are an option for Kindergarten to Year 2 students
4. Generic yellow or navy rain jacket alternative is acceptable for Prep to Year 2 students only
5. Primary tie worn as directed, on occasion
6. Navy tie worn each day
7. Cardigan fabric is poly/wool. Poly/cotton option is available for students with allergies or eczema.



16

PRIMARY SCHOOL SPORTS

UNISEX UNIFORM – KINDERGARTEN TO YEAR 6

REQUIRED



Primary sports polo – short-sleeved ¹

— OR —



Primary sports polo – long-sleeved ¹



Sports shorts classic ³



Track jacket (fleece or microfibre) ²



Track pants (fleece or microfibre) ²



Girls socks – navy College socks with teal trim



Boys socks – navy crew socks



Sports shoes (any colour) ⁴

OPTIONAL



Sports skort (for girls) ³



Sports fleece vest



House shirt ⁵

Please refer to the following page for all explanatory notes.



PRIMARY SCHOOL SPORTS

UNISEX UNIFORM – KINDERGARTEN TO YEAR 6

NOTES

1. Polo – students may wear either the long or short-sleeved polo throughout the year.
Long-sleeved undershirts may not be worn under short-sleeved polo
2. Track separates – when worn together, these separates must be worn in matching fabric,
i.e. fleece items cannot be worn with microfibre items
3. No tights/leggings are to be worn under the shorts or skirt
4. Sports shoes – casual fashion shoes and light-up shoes are not acceptable
5. The House shirt is only worn for House-related events.



SECONDARY SCHOOL

GIRLS UNIFORM – YEAR 7 TO YEAR 12

REQUIRED



Secondary blouse:
Years 7-10 – short or
long-sleeved ^{1,7}



Secondary blouse:
Years 11-12 – short or
long-sleeved ^{1,7}



Secondary skirt ²



Unisex College jumper ^{6,10}



College socks
(white with navy
trim) or black
opaque tights ⁵



College blazer ^{8,10}



College hat



Classic black leather
lace-up shoes

Please refer to the following page for all explanatory notes.

OPTIONAL



Ladies' pants ³



College scarf



Award pins
on College
blazer lapel ¹¹



Navy crew
socks ⁴



Black crew
socks ⁴



College rain jacket ¹²



Year 12 Cardigan ⁹



SECONDARY SCHOOL

GIRLS UNIFORM – YEAR 7 TO YEAR 12

NOTES

There is no formal changeover of summer and winter uniform for Secondary School girls, with the exception of the College blazer to be worn in Terms 2 and 3. Girls may choose to add optional layers to the uniform as needed. These must be worn in accordance with the Uniform Policy.

1. Blouse to be worn over skirt or pants
2. Secondary skirt length must be worn on the knee
3. Ladies' pants may be worn in place of the skirt
4. Socks – navy or black crew socks must be worn with the ladies' pants
5. Black opaque tights are to be worn without socks
6. Jumper may not be worn as the outer garment off campus. Jumper fabric is poly/wool. Poly/cotton option is available for students with allergies or eczema
7. Undergarments must not be visible under any College uniform, including long-sleeved shirts under the College blouse
8. The College blazer is a compulsory part of the formal uniform for all Secondary students in Terms 2 and 3. It must be clean, pressed, in good repair and worn to and from the College on public or private transport. During Terms 2 and 3, blazers are to be worn at all College assemblies and public occasions
9. The Year 12 Cardigan replaces the blazer for Year 12 students. The exception is if students attend formal events or present at Assembly, when they must wear their blazer. Award pins must be worn on the formal blazer, not the Year 12 cardigan
10. The College formal uniform cannot be worn with any of the College sport uniform
11. Award pins are to be worn on the left lapel of the College blazer. Only year based award pins from the previous year are to be worn
12. Alternative rain jackets are not acceptable. College rain jackets may only be worn to and from the College when raining, or when rain is imminent. However, they may be worn on College grounds if necessary for warmth.



SECONDARY SCHOOL

BOYS UNIFORM – YEAR 7 TO YEAR 12

REQUIRED



Secondary shirt – short-sleeved ^{1,11}

— OR —



Secondary shirt – long-sleeved ^{1,2}



Black leather/vinyl belt
with plain unbranded buckle



Belted trousers



Navy
College tie
(Years 7-10)



Striped
College tie
(Years 11-12)



College hat



Unisex College jumper ^{5,9}



College blazer ^{7,9,10}



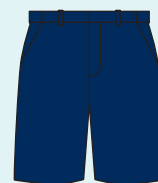
Navy crew socks



Classic black leather
lace-up shoes

Please refer to the following page for all explanatory notes.

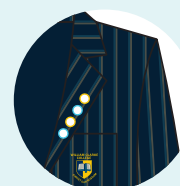
OPTIONAL



Belted shorts ³



College scarf



Award pins
on College
blazer lapel ¹⁰



Black crew
socks ⁴



College rain jacket ⁶



Year 12 Cardigan ⁸



SECONDARY SCHOOL

BOYS UNIFORM – YEAR 7 TO YEAR 12

NOTES

There is no formal changeover of summer and winter uniform for Secondary School boys, with the exception of the College blazer to be worn in Terms 2 and 3, and belted shorts worn only in Terms 1 and 4. Boys may choose to add optional layers to the uniform as needed. These must be worn in accordance with the Uniform Policy.

1. Shirt – must be worn fully tucked into shorts/trousers
2. Long-sleeved shirt – must only be worn with trousers and not shorts
3. Shorts – optional for Terms 1 and 4 only. Long-sleeved shirts and College blazers are not to be worn with belted shorts. Trousers are required for formal occasions
4. Socks – black crew socks may be worn only with long trousers
5. The jumper may not be worn as the outer garment off-campus. Jumper fabric is poly/wool. Poly/cotton option is available for students with allergies or eczema
6. Alternative rain jackets are not acceptable. College rain jackets may only be worn to and from the College when raining, or when rain is imminent. However, they may be worn on College grounds if necessary for warmth
7. The College blazer is a compulsory part of the formal uniform for all Secondary students in Terms 2 and 3. It must be clean, pressed, in good repair and worn to and from the College on public or private transport. During Terms 2 and 3, blazers are to be worn at all College assemblies and public occasions
8. The Year 12 Cardigan replaces the blazer for Year 12 students. The exception is if students attend formal events or present at Assembly, when they must wear their blazer. Award pins must be worn on the formal blazer, not the Year 12 cardigan
9. The College formal uniform cannot be worn with any of the College sport uniform
10. Award pins are to be worn on the left lapel of the College blazer. Only year based award pins from the previous year are to be worn
11. Undergarments must not be visible under any College uniform, including long-sleeved shirts under the short-sleeved Secondary shirt.



SECONDARY SCHOOL SPORTS

UNISEX UNIFORM – YEAR 7 TO YEAR 12

REQUIRED



Secondary sports polo – short-sleeved ¹

— OR —



Secondary sports polo – long-sleeved



Secondary sports shorts ²



Track jacket (microfibre)



Track pants (microfibre)



Girls socks – white College socks with navy trim



Boys socks – navy crew socks



Sports shoes (any colour) ⁴



House shirt ⁷

OPTIONAL



Hoodie ³

Please refer to the following page for all explanatory notes.



SECONDARY SCHOOL SPORTS

UNISEX UNIFORM – YEAR 7 TO YEAR 12

NOTES

1. No long-sleeved shirts to be worn under the short-sleeved Secondary polo
2. Secondary sports shorts should be a relaxed fit and modest in length. Tight fitting and 'short' shorts are not acceptable
3. The hoodie is an optional layer for the secondary sport uniform and should be worn with the hood down. It is not to be worn as the outer garment outside of the College. If you wish to purchase a hoodie, you must already have purchased a track jacket
4. Shoes - casual fashion shoes are not acceptable
5. For Co-curricular required uniform, please visit our online shop or contact the College Shop at collegeshop@wcc.nsw.edu.au
6. The College sport uniform cannot have additions from the formal uniform
7. The House shirt is only worn for House-related events.



ACCESSORIES

UNISEX – PREPARATORY TO YEAR 12



College backpack 25L ¹



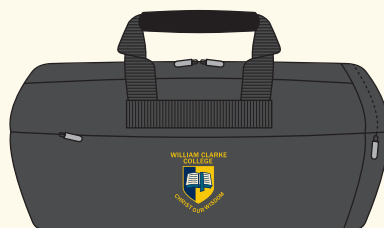
College backpack 30L ²



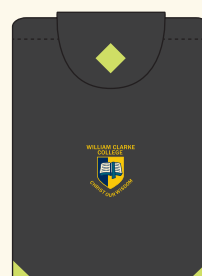
College library bag ⁵



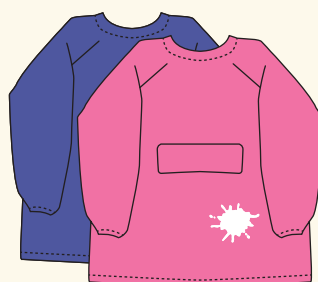
College backpack 44L ³



College sports bag ⁶



College excursion backpack ⁴



Art smock ⁷

Please refer to the following page for all explanatory notes.



ACCESSORIES

UNISEX – PREPARATORY TO YEAR 12

NOTES

1. 25L backpack – recommended for use in Kindergarten to Year 2
2. 30L backpack – recommended for use in Year 3 to Year 6
3. 44L backpack – recommended for use in Year 7 to Year 12
4. Excursion backpack – for use in Kindergarten to Year 4 as required
5. Library bag – for use in Preparatory School to Year 4
6. Sports bag – optional for Secondary School Co-curricular sport, however only College crested bags are acceptable as sports bags
7. Art smock – for use in Preparatory School to Year 4.



UNIFORM POLICY

The College has a uniform for a variety of reasons. A uniform is important because:

- It helps the College present a consistent public image
- It helps students identify with and have pride in their membership of the College
- It teaches students to abide by rules of uniform/appearance, which are important lessons in order to obtain jobs and remain employable
- It prevents competition among students on the basis of fashion and minimises competition on the basis of income and family wealth.

More importantly, a uniform assists students in building habits related to meeting expectations and respecting boundaries. Although these are specific to attire and appearance in these formative years, in the future these habits of integrous behaviour will assist them in making wise decisions beyond school as they become flourishing members of society.

For all these reasons, it is important that students wear their uniform correctly, take care with and have pride in their general appearance.

For ease of access, control of quality and to ensure consistency of the uniform appearance, all uniform items are available to purchase at the College Shop. Details of required uniform items can also be found on Connect under A-Z of College Information.

Any staff member, both teaching and non-teaching, can issue a uniform infringement when a student is not wearing the correct uniform or has additional non-uniform items. All infringements will be noted in the appropriate record on Connect for Secondary students and in the College Diary for Primary students.

Students must wear their College hat while outdoors during break times. Students are expected to wear their uniform neatly and therefore their uniform must be in good repair, e.g. polished shoes, and boys are expected to wear their shirts tucked in.

NOT MEETING UNIFORM EXPECTATIONS

If a student has a valid reason to not meet the correct uniform requirements, their parent/carer must send the student with a note in the College Diary outlining the reason.

For Secondary students, excuses such as a wet uniform and/or a uniform that is not washed/ironed/dry will not be accepted, and appropriate consequences such as an infringement will be issued. Students who wear sports uniform for medical reasons are required to provide a note from a medical professional for the duration of their injury for an exemption to be granted.

If a student is wearing an incorrect uniform item, e.g. incorrect earrings, a staff member will ask them to remove the item and place it somewhere safe. The staff member will not keep the item safe for the student. The College will not be responsible for any items that are lost as a result of the student having to remove them.

Please be aware that students are expected to adhere to uniform requirements at all times while in College uniform. This includes in all public areas such as Kellyville Village or Castle Towers. Students may receive a uniform infringement for incorrect uniform outside of College grounds.

HAIR

Boys' hair must be neat, tidy and clear of the face. It should sit above the collar and be no longer than halfway down the ear. Hairstyles deemed as unconventional or extreme by the College are not permitted, including but not limited to spikes, rat tails, mullets and conspicuous hair colouring. Boys should present clean shaven at all times.

Girls' hair must be neat, tidy and clear of the face. Fringes should not hang over eyes. If longer than the collar, hair must be tied back. Hair accessories, including clips, ribbons, headbands and scrunchies must be in College colours: gold, navy, teal, white or College stripe. Hair elastics may be navy, blonde, brown or black. A large selection of acceptable hair accessories are available at the College Shop. Hairstyles deemed as unconventional or extreme by the College are not permitted, including but not limited to conspicuous and unnatural hair colouring.

MAKEUP & NAILS

Minimal foundation or concealer may be worn (natural appearance only). Clear lip balm may be worn. All other makeup including eye makeup, false eyelashes, acrylic or gel nails and coloured nail polish are not permitted to be worn at the College.

38 JEWELLERY AND TATTOOS

The College Uniform Policy does not permit the wearing of jewellery except earrings for girls. These should be one matching pair of round studs or sleepers worn in the centre of each earlobe. Studs can be either gold or silver and up to 4mm in diameter. Sleepers can be either gold or silver and up to 12mm in diameter with no adornments or attachments. Any other piercings are not permitted.

Tattoos of any kind are not permitted.

In rare circumstances, an exemption may be granted by the Head of School to allow a student to wear a piece of jewellery for cultural reasons; where wearing such jewellery is a religious or cultural requirement, rather than simply a means of student expression. For safety reasons, necklaces are not permitted to be worn with or under the College Sports uniform.

HATS

William Clarke College is Sun Safe. All students from Preparatory to Year 12 must wear College wide-brim hats while outdoors during break times. Students may not participate in certain activities if they do not wear their College hat.

SHOES

With the exception of the Preparatory School, all students are required to wear classic, black leather lace-up shoes with black laces with their formal uniform. Shoes should be polished and in good condition. Kindergarten to Year 2 students may wear black leather shoes with buckle or velcro fastenings if preferred. Kindergarten to Year 6 girls may wear black leather single strap shoes with a buckle. Shoes of this description are available at local retail stores. Casual black shoes that do not conform to the above requirements are not acceptable.

Running shoes, cross trainers or joggers are required to be worn with the Sports uniform. Casual fashion shoes and slip-on shoes including but not limited to Vans-style shoes are not acceptable.

COLLEGE BAGS

All students must use crested College bags appropriate to their grade as recommended by the College Shop. This includes bags for excursions, Library and Co-curricular Activities.

HOUSE SHIRTS

All students from Kindergarten to Year 12 require a House shirt. There are eight Houses at William Clarke College, each with their unique colour. Students are allocated to a House upon enrolment, and these are worn throughout the year for various College events. Preparatory students do not require a House shirt.

AWARD PINS

Award pins should be worn on College blazers only. Only year based award pins from the previous year are to be worn. For Year 12 students, award pins should not be worn on the Year 12 cardigan. If a Primary student has received the Co-curricular Award pin, this may be worn on the lapel of the College formal shirt or blouse.

HOW TO ORDER

The College operates a shop for the convenience of parents and students. It is open from 10:00am to 3:45pm weekdays during term time and is located on our College campus under the K-6 Hall, accessible via Gate 6 on Wrights Road. Secondary students may purchase items from the College Shop during recess, lunch and after school. We encourage all new students to have a 30-minute uniform fitting before they commence at the College. These can be booked online via our website:

<https://www.wcc.nsw.edu.au/life-at-william-clarke/#college-shop-toc>

COLLEGE ONLINE SHOP

We also offer an online shop, allowing parents to purchase items that will be either delivered to their child's classroom (Primary) or available for their child to pick up from the College shop at lunchtime or after school (Secondary).

<https://william-clarke-college.myshopify.com/>

Items ordered before 9:00am will be available for delivery or pick up on that same day, during term time.

For any enquiries regarding the William Clarke College uniform or to contact the College Shop staff, please email collegeshop@wcc.nsw.edu.au







**WILLIAM CLARKE
COLLEGE**
CHRIST OUR WISDOM

T. (02) 8882 2100
E. info@wcc.nsw.edu.au
wcc.nsw.edu.au

1 Morris Grove
Kellyville
NSW 2155 Australia

PO Box 6010
Baulkham Hills BC
NSW 2153 Australia

Follow us

-  [WilliamClarkeCollege](#)
-  [William Clarke College](#)
-  [williamclarkecollege](#)
-  [William Clarke College](#)