

ARCHITECTURE PORTFOLIO

ALEyna AYYÜCE İMRAK

2023-2025





ALEYNA AYYÜCE İMRAÇ MİMAR/ARCHITECT

0505 370 88 82
aleyna2358@gmail.com
Kayseri, TÜRKİYE
behance.net/aleynamrak

GENERAL INFORMATION

I graduated with a Bachelor's degree in Architecture in 2023. As an aspiring architect who embraces next-generation design approaches, I am innovative, eager to learn, and open to new ideas. Drawing inspiration from various disciplines of art – painting, literature, music, and architecture – I continuously refine my aesthetic perspective. By combining creativity with a disciplined work ethic, I aim to contribute value both in individual projects and within collaborative team environments.

Education - Bolu Abant İzzet Baysal University, Faculty of Architecture, Department of Architecture, (2019-2023)

GPA - 3.36 / 4.00

Languages - Turkish, native
English, B2
Spanish, A1
German, A1

SOFTWARE PROFICIENCY

Autodesk Autocad	
SketchUp	
Lumion	
Twinmotion	
Adobe Photoshop	
Autodesk 3dsmax	
Corona Render	
Autodesk Revit	
AI Softwares (Krea AI, rerender ai,... etc.)	

EXPERIENCE

2021	Intern (Arch.) <i>Seyit Şahan Mimarlık</i> <i>Construction Site Internship</i>
2022	Intern (Arch.) <i>IKON Proje</i> <i>Office Internship</i>
2022-2023	Architectural Visualization Architect
2023-2024	Assistant Control Officer/Yrd. Kontrol Elemanı <i>TRL Yapı Denetim</i>
2024	Freelancer

CONTENT

- 1 . TECHNOPARK**
graduation project, 2023 03
- 2 . LANDSCAPE RENO.**
landscape renovatlon,2024 17
- 3 . VICKY HOUSE**
facade design, 2023 21
- 4 . IVY KITCHEN**
visualization project, 2023 25
- 5 . FARMHOUSE**
interior design project, 2024 29
- 6 . K.D. HOUSE**
interior design project, 2025 33
- 7 . B3-APARTMENT**
visualization project, 2025 37
- 8 . RUNAWAY HOUSE**
visualization project, 2025 41

1.

TECHNOPARK

graduation project, 2023

Karaköy, Bolu

softwares used: Autodesk Autocad, SketchUp, Lumion, Adobe Photoshop, ai

This project envisions a technopark dedicated to the **defense industry**, while also fostering collaboration across supporting disciplines. It provides spaces for firms, academics, and students to develop projects, benefit from incubation programs, and access research and training opportunities.

Bolu's strategic location between Ankara and Istanbul strengthens the project's role. The concept focuses on **rapid response and continuous development** against technological failures frequently encountered in the defense sector, creating an environment that promotes **security, innovation, and productivity**.



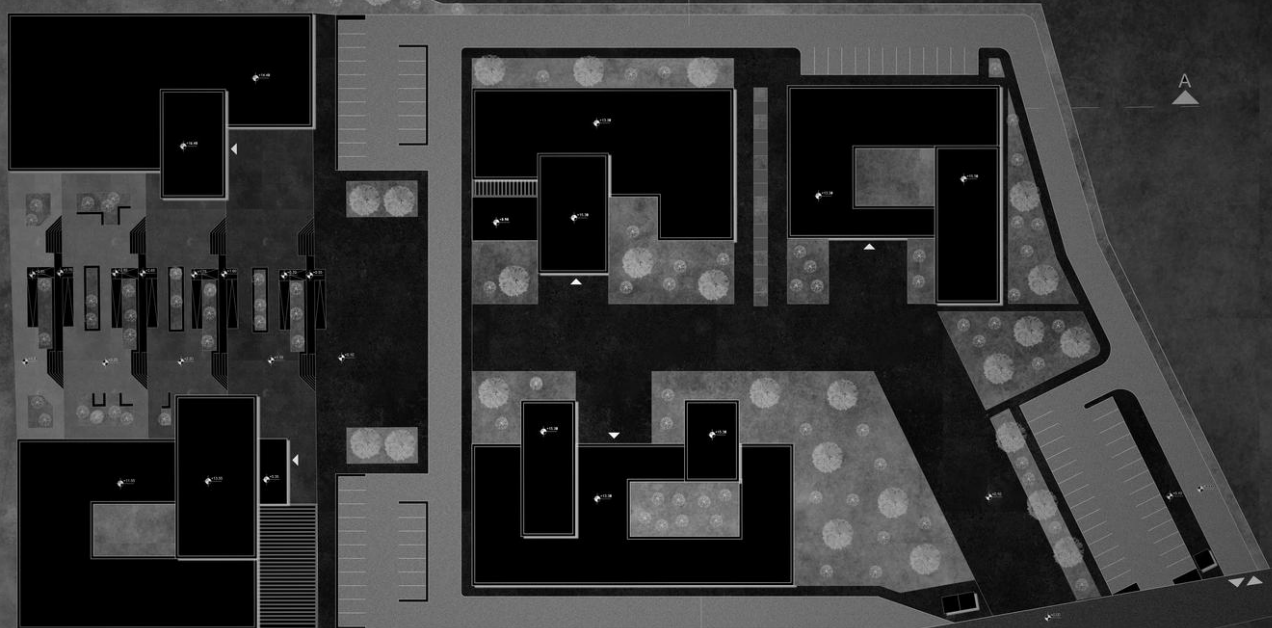


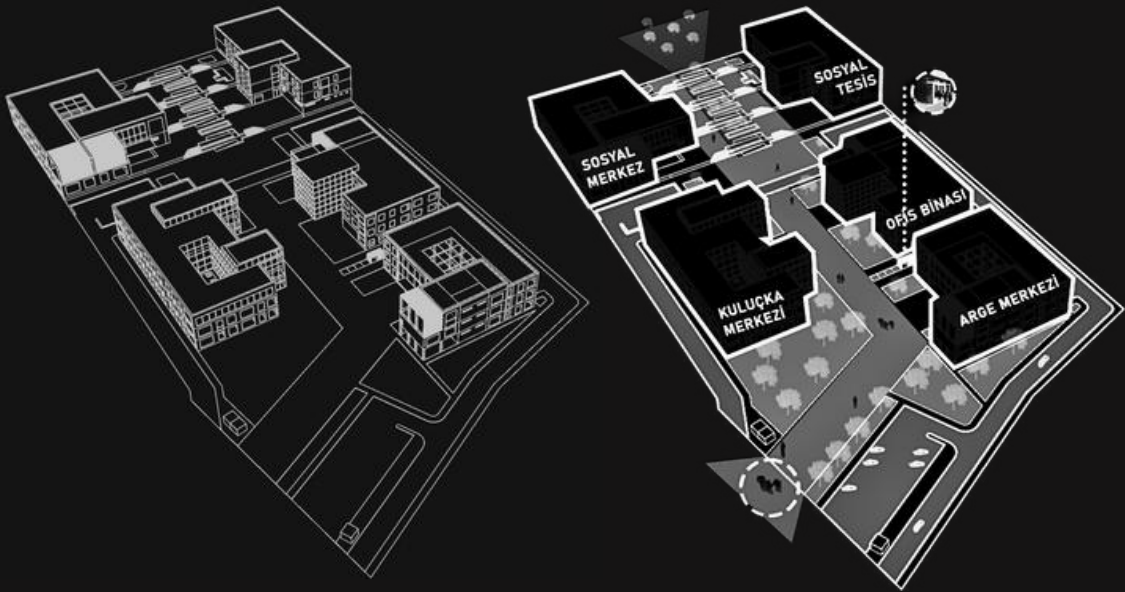


B

A

B





Defense – Development – Alliance – Bloc Formation

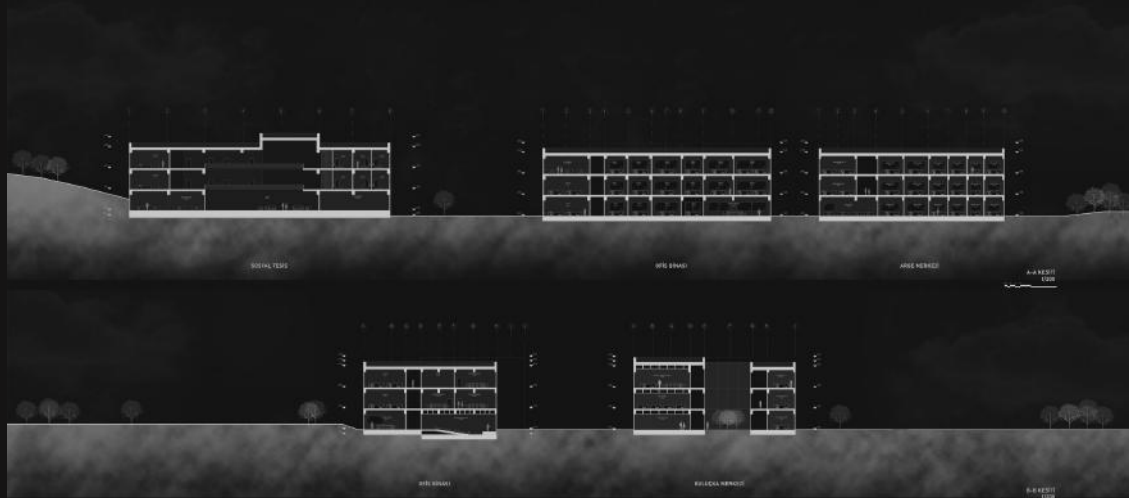
Defense has historically served not only as a divisive force but also as a **unifying power**, carrying strategic importance in diplomacy and in the establishment of alliances. In this project, the concepts of **Defense – Development – Alliance – Bloc Formation** guided the architectural approach.

The phenomenon of bloc formation observed throughout history is **reinterpreted** here as a spatial strategy. The added blocks are organized through a **valley and square layout**, creating both **fluid circulation** and a **central public core**. This design not only facilitates the integration of diverse functions but also ensures that the blocks remain secure and easily monitored.

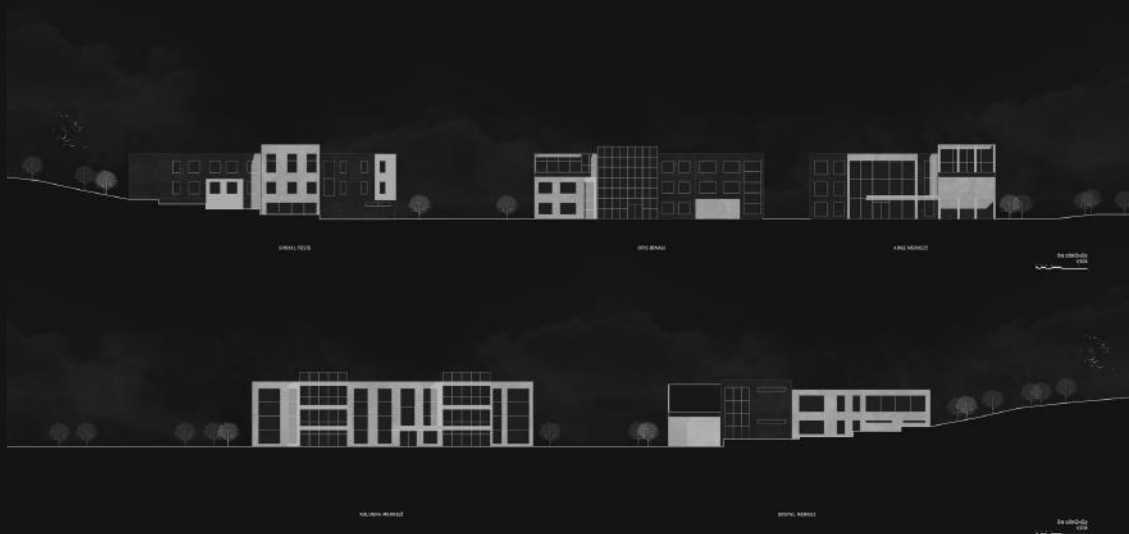
The resulting composition reflects the multifaceted nature of the defense field, offering a technopark scenario that translates ideas of collaboration, progress, and security into architectural form.







SECTIONS



ELEVATIONS





R&D CENTER

A facility dedicated to **research and development**, designed as a platform for discussion, collaboration, and innovation. Open to academics, students, and both private and public sector companies, it offers flexible workspaces and shared laboratories that encourage collective knowledge production. Serving as a key hub, the R&D Center embodies the **innovative identity** of the technopark and fosters interdisciplinary collaboration.



OFFICE BUILDING

Comprising **rentable offices**, meeting rooms, co-working spaces, and open-plan work areas, this building provides flexible usage opportunities for a **wide range of users**. It functions as a bridge between individual initiatives and corporate firms, accommodating different scales of work under one roof. With a **transparent and permeable** spatial design, it enhances interaction and collaboration across disciplines.



INCUBATION CENTER

Home to offices, administrative units, meeting rooms, exhibition halls, a library, study areas, and workshops, the Incubation Center supports projects from academics, students, and industry partners. It offers a nurturing environment for young entrepreneurs and innovative ideas, promoting **academia-industry** collaboration. Its spatial organization blends production and exchange, making it a vital space for growth and experimentation.



SOCIAL FACILITY

Open to academics, students, private and public organizations, as well as visitors, this facility provides single, double, and triple guest rooms alongside a restaurant and bar. Designed to **balance the intensity** of research and work, it offers comfort, rest, and opportunities for **social interaction**. The Social Facility strengthens the **sense of community** within the technopark, making it more livable and inclusive.



SOCIAL CENTER

As a publicly accessible structure, the Social Center serves academics, students, companies, and visitors. With shops, cafés, and restaurants, it acts as a **central hub of interaction**. Designed as a **vibrant public square**, it not only enlivens the technopark but also contributes to the urban fabric by creating **connections** between the project and the city.

2.

MODERN LANDSCAPE RENOVATION

freelance project, 2024

competition entry – project on Arcbazar

softwares used: Autodesk 3dsmax, Corona Render, Adobe Photoshop

This project aims to transform an existing landscape into a setting that responds to the needs of contemporary living. Water elements, seating arrangements, and an outdoor kitchen are carefully positioned to create a sense of **continuity** while enriching the site with **multiple functions**. Around the pool, dedicated lounge areas introduce warmth through natural materials, while clean lines emphasize a **refined and modern character**.









The outdoor kitchen and bar are conceived not only as practical cooking facilities but also as a central hub for social interaction. Designed with flexibility in mind, the space can adapt seamlessly to both **everyday routines and special gatherings**. The integration of tropical greenery enhances the sense of calmness and strengthens the design's connection to nature. Overall, this landscape renovation brings together aesthetic refinement, functional solutions, and comfort, offering its users an outdoor environment that is both **vibrant and serene**, while fostering social experiences.

3.

VICKY HOUSE

freelance project, 2023

competition entry – facade design and
visualization project on Arcbazar

softwares used: SketchUp, Twinmotion, ai

This design presents a reinterpretation of the **Victorian** facade through a modern lens. Classical elements such as columns, arched entrances, and symmetrical organization are rebalanced with **contemporary material choices** and refined detailing. The light-toned stone cladding adds timeless elegance, while expansive windows and balconies maximize the entry of natural light into the interiors.



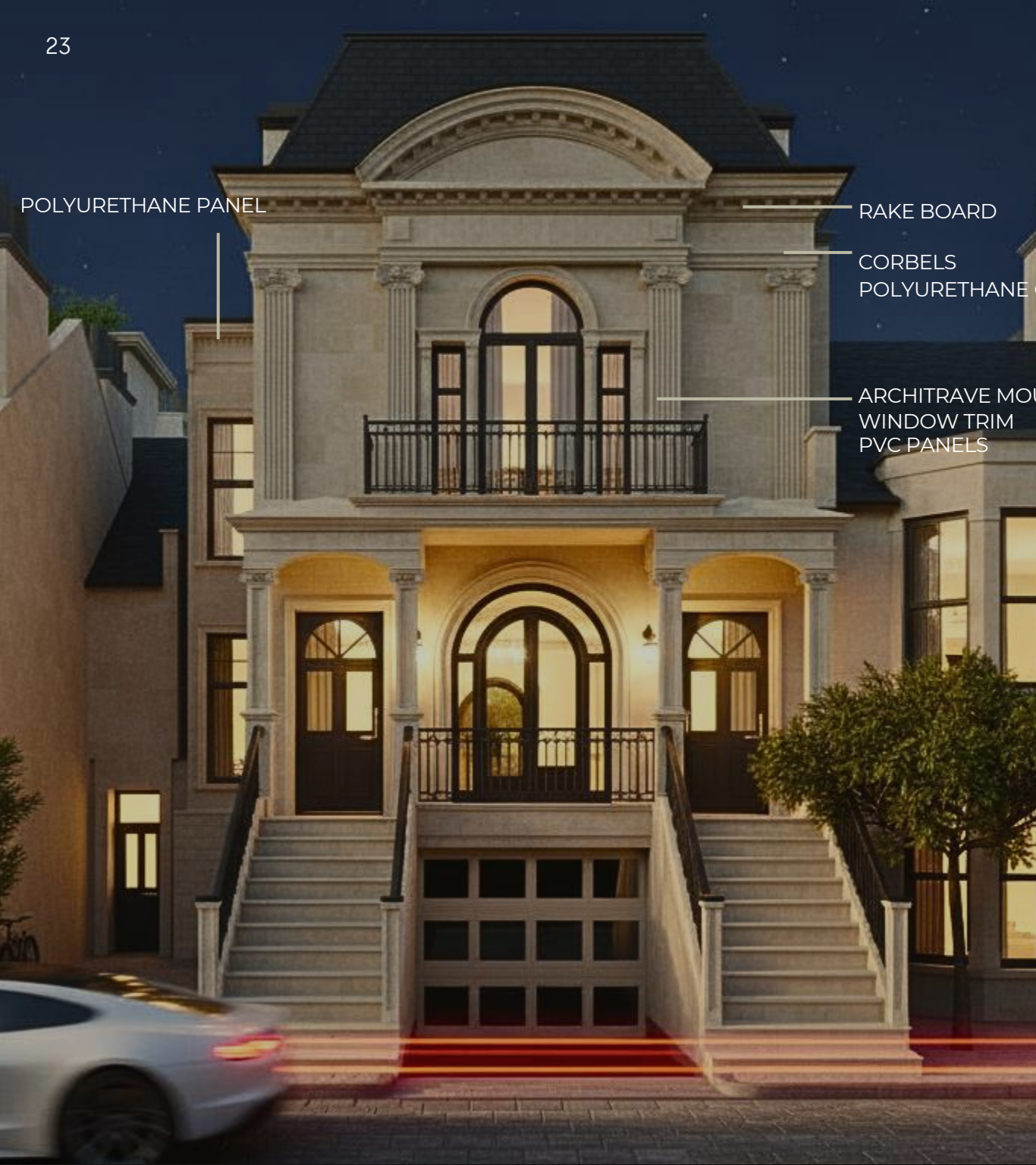


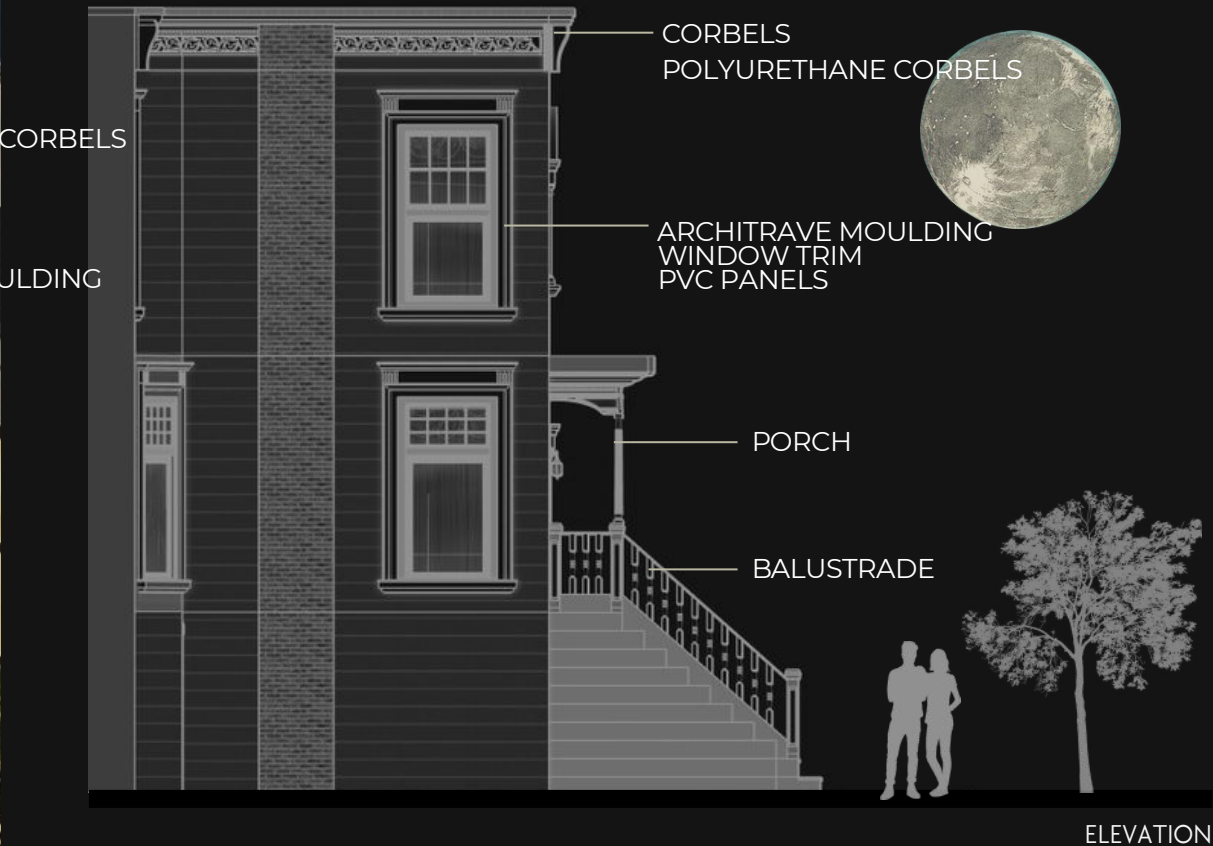
POLYURETHANE PANEL

RAKE BOARD

CORBELS
POLYURETHANE

ARCHITRAVE MO
WINDOW TRIM
PVC PANELS





The monumental entrance, accessed through dual staircases, emphasizes **spatial hierarchy** while guiding visitors toward the heart of the building. Projecting and recessed volumes in the composition bring a **dynamic rhythm** to the facade. The preservation of traditional **Victorian motifs**, integrated with **modern lines**, creates a striking **aesthetic contrast**.

Ultimately, this design represents a facade concept that both recalls the architectural grandeur of the past and responds to the demands of modern living. In doing so, it establishes a distinctive identity that bridges **historical reference with contemporary architecture**, embodying a timeless presence.

4.

IVY KITCHEN

freelance project, 2023

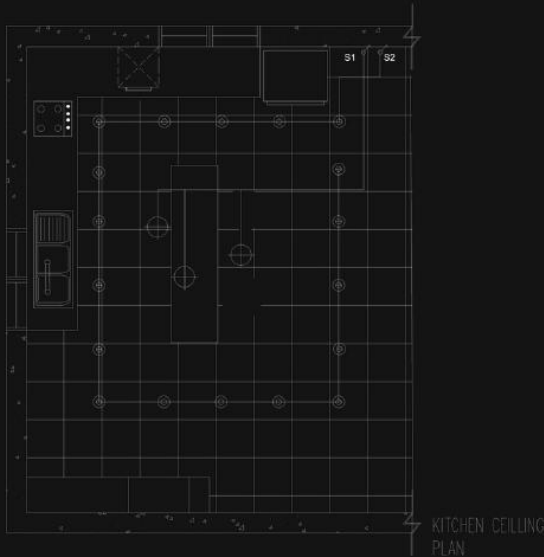
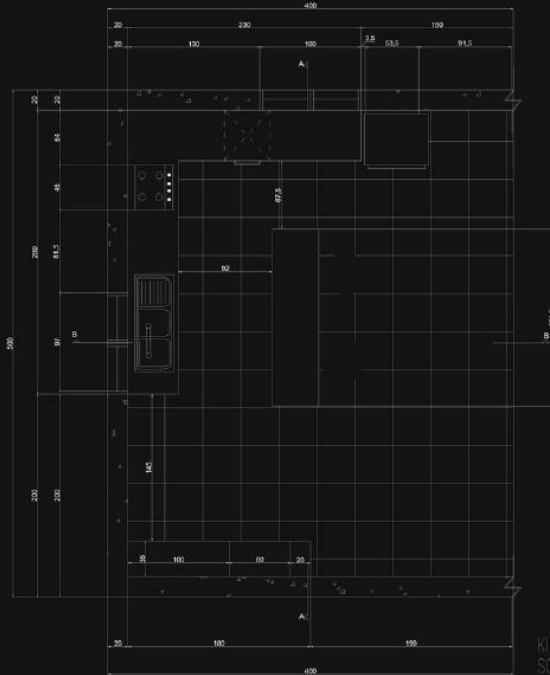
visualization for Neptune Project

softwares used: SketchUp, Twinmotion, ai

This design represents a contemporary interpretation of the **simplicity of the countryside** combined with **modern functionality**. Dark green cabinetry, warm wooden flooring, and abundant natural light give the space a timeless character. The central island serves as both a workspace and a social hub, making it the heart of the kitchen.



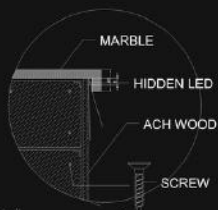




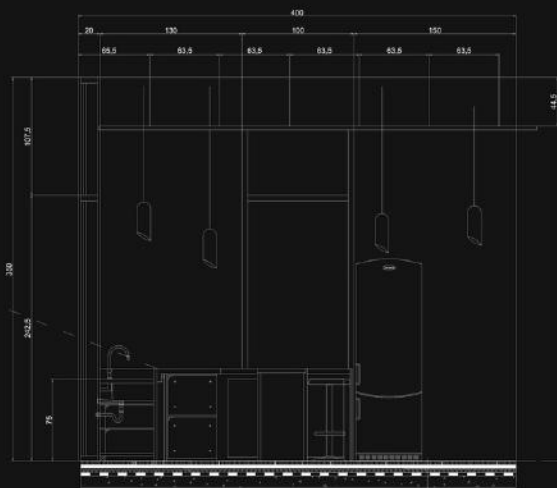
Natural textures, brass-accented lighting, and classic rugs introduce a nostalgic vintage atmosphere, while modern appliances and open shelving respond to contemporary needs. The large window connects the interior with the surrounding landscape, creating a bright, airy, and livable environment.

Ultimately, the design blends the **warmth of traditional cottage** kitchens with the practicality of modern living, offering users a comfortable, inviting, and aesthetically refined experience.





Detail
SCALE 1/5



Level 2

350

Level 1

0

SECTION B-B
SCALE 1/20

- CERAMIC TILES
- LATEX PORTLAND CEMENT MORTAR
- WATER PROOF MEMBRANE
- CONCRETE SLAB



Level 2

350

Level 1

0

SECTION A-A
SCALE 1/20

- CERAMIC TILES
- LATEX PORTLAND CEMENT MORTAR
- WATER PROOF MEMBRANE
- CONCRETE SLAB

5.

FARMHOUSE

freelance project, 2024

competition entry – interior design project
on Arcbazar

softwares used: Autodesk 3dsmax, Corona Render,
Adobe Photoshop, ai

This project offers a fresh take on the **modern farmhouse** concept, merging **cozy warmth** and **organic materials** with a **modern** approach. Materials such as wood, linen, and woven rattan create a simple yet inviting atmosphere. The centrally placed large bed emphasizes comfort, while the fireplace introduces a rustic character to the space.









This design merges the authenticity of rural living with the functionality of modern life, delivering a spatial experience that feels both nostalgic and contemporary.

Elements such as exposed ceiling beams and a textured rug reinforce the **farmhouse** aesthetic, while clean-lined furniture and modern lighting fixtures bring a fresh and updated touch. The interior's soft, natural tones establish a calm environment that offers both tranquility and comfort to its users.

6.

K.D. HOUSE

freelance project, 2025

competition entry – interior design project
on Arcbazar

softwares used: Autodesk 3dsmax, Corona Render,
Adobe Photoshop, ai

This interior design aims to harmonize the clean aesthetics of **modern minimalism** with the practical demands of everyday living. The **open-plan layout** creates a seamless transition between the living area and the kitchen, encouraging both functionality and a sense of openness. Natural light is maximized to enhance spatial depth and highlight the subtle textures and materials used throughout the space. The project emphasizes a **contemporary minimalist** style enriched with a refined touch of luxury, achieved through the integration of clean lines, warm neutral tones, and carefully curated lighting solutions. The result is an inviting and balanced atmosphere that combines **elegance, comfort, and functionality** in equal measure.







A neutral color palette enhances the sense of calm, while the simple forms of the furniture provide comfort and usability. Textured gray walls complement the stone flooring, and the addition of greenery brings a refreshing vibrancy to the atmosphere. Black track lighting on the ceiling emphasizes the contemporary character of the interior while offering flexibility for different lighting scenarios. Enriched with subtle details, the design strikes a balance between comfort and elegance, creating a serene and modern living environment.



7.

B3-APARTMENT

freelance project, 2025

facade design and visualization project for
M.Project

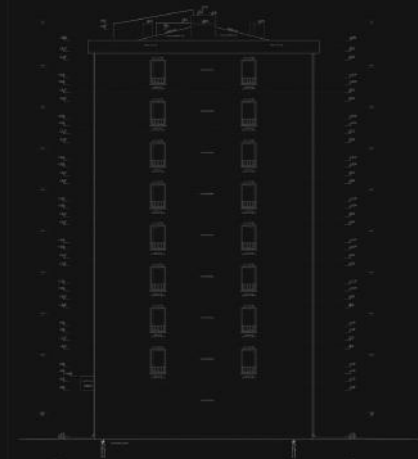
softwares used: Autodesk 3dsmax, Corona Render,
Adobe Photoshop, ai

This residential project presents a facade design that unites the **simplicity of modern architectural lines** with functional clarity. The orderly arrangement of windows and the rhythmic placement of balconies establish a balanced and aesthetically pleasing composition, while the interplay of different material textures introduces dynamism to the overall design.









ELEVATIONS

On the ground floor, transparent glass surfaces define an inviting entrance that enhances the sense of openness, while the repetitive facade rhythm of the upper floors provides **continuity and coherence**. This design aims to reflect contemporary living standards while contributing a refined modern aesthetic to the urban fabric.

8.

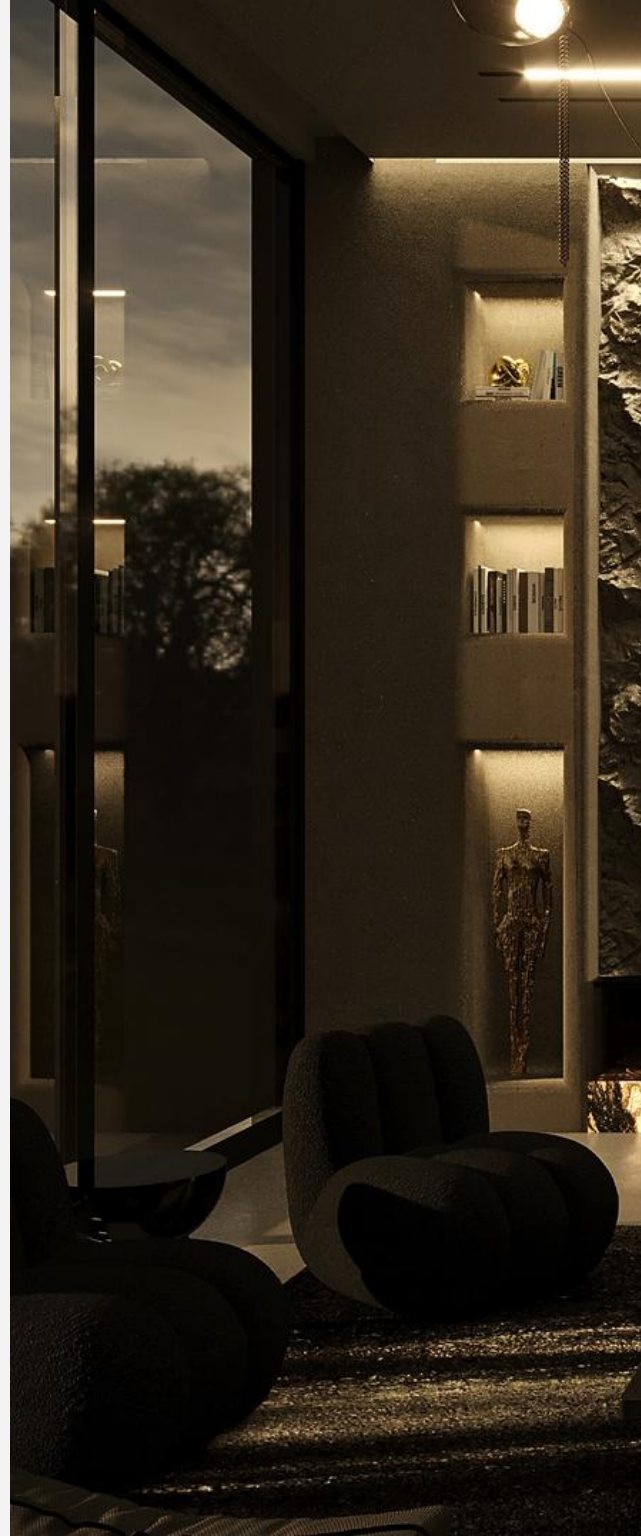
RUNAWAY HOUSE

freelance project, 2025

design and visualization project

softwares used: Autodesk 3dsmax, Corona Render,
Adobe Photoshop

The interior design of Runaway House embodies modern villa living through an **dark wabi sabi** approach. The open-plan layout unites the living, kitchen, and lounge areas into a harmonious flow, fostering a **calm and balanced atmosphere**.



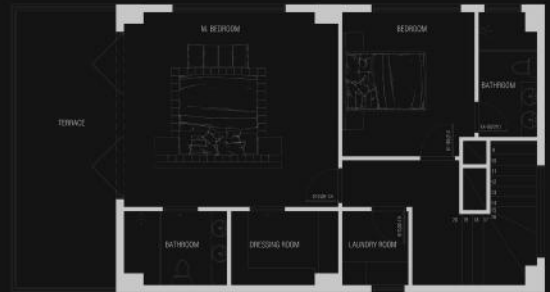




A palette of dark tones is softened by natural textures and warm lighting, creating an ambiance of **sophisticated tranquility**. Inspired by **wabi sabi philosophy**, clean lines are enriched with ethnic patterns and carefully selected natural materials, adding cultural depth to the design. Expansive glass openings invite natural light, enhancing the dynamic character of the interior throughout the day. Runaway House blends contemporary aesthetics with wabi sabi elements, offering a **timeless, serene, and luxurious** living experience.



1.FLOOR PLAN



2.FLOOR PLAN

