

Winchelsea Star

Price \$1

Your Weekly Community Newspaper

Since 1977

Vol 46 Ed 7

Tuesday 28 February 2023

winchelseastar.org.au

Shire Hall Expo Friday 24 February 2023



Attendees at the first
Winchelsea Shire Hall Expo
networking and making
new connections

Page 3



Draft Tree Risk Management Plan

Council has reviewed and updated its **Draft Tree Risk Management Plan**.



DID YOU KNOW?

All trees have a finite lifespan

At some point in their life cycle, the increasing risk associated with retaining the tree surpasses the tree's benefit to the environment and community.

A tree risk management program provides a process for the scheduling and implementation of tree inspections, which enable works to be prioritised based on perceived risk.

For more information go to surfcoast.vic.gov.au/TreeRisk



WINCHELSEA R.S.L

Winchelsea R.S.L invites you to attend R.S.L clubrooms First Sunday of each Month 1pm - 3pm To view the extensive records of local service men and women. Items of interest.

R.S.L clubrooms are located in 1914 - 1918 Memorial Grandstand At Winchelsea Football Club Main Entrance



Water Supply Specialists

WATER SOLUTIONS

74 Dennis Street, Colac 5231 1861



ALL THINGS WATER:

- PUMPS - PIPES
- FITTINGS - TANKS
- POOL CHEMICALS
- IRRIGATION
- WATER PURIFICATION
- SOLAR - REPAIR



holistich health colac

Helping you find permanent relief from chronic physical, mental or emotional conditions

KINESIOLOGY
SPINAL FLOW TECHNIQUE
HYPNOTHERAPY
QUIT SMOKING
REIKI

Karen Wigley

0409 706 727
admin@holistichhealthcolac.com.au
www.holistichhealthcolac.com.au

- Domestic and Commercial hire equipment • Industrial welding gas
- Digging and Earthmoving equipment • New trailers and trailer repairs
- Firewood • Stockists of Royal Oil Lubricants products
- LPG for domestic and commercial requirements

Give Chris and the Team a call on **5232 1177** or email info@colachire.com.au
www.colachire.com.au
 101 Wallace St Colac 3250





Winchelsea Bowls Club By Kitty 'N Jack



Midweek Division 1 2022/23

Graeme Lloyd, Ernie Andres, Ray Thompson, Peter McConachy(emergency)
 Rob Walters, Annie Walker, Julie Johnson, Jenny McConachy, Peter Marshman
 Wendy Knuckey, Angie Littler, Helen Davie, Geoff Orchard.

PENNANT RESULTS

Tuesday 21st February Winchelsea Midweek Division 1 were defeated in the Preliminary Final by Camperdown Golf 67 shots to 68 shots.

Saturday 25th February Winchelsea Saturday Division 1 were defeated at

Cressy by Colac in the Semi- final, 85 shots to 100 shots.

Saturday 25th February Winchelsea Saturday Division 3 were defeated by Colac City 73 shots to 80 shots and will now move on to the Preliminary Final next week.

On Sunday the 26th of February Erin Baulch & Jason Armstrong were defeated by one shot 11/12 in the final of the Western Region State Mixed Pairs.

Obviously, it has been a difficult, frustrating not to mention disappointing week for many players. May the bowls be with us next weekend!!

Shire Hall Expo Friday 24th February, 2023

Last Friday night saw a total of 21 local community groups gather together in the Shire Hall to showcase what their group offers. Visitors on the night together with each of the groups chatted together and exchanged a great deal of information and established new connections and networks. There was a great deal of chatter in the room and fabulous to see this lovely place connecting our community.

Many enjoyed a wood fired pizza for dinner, a delicious toasted sandwich, a cuppa or a nice cool icy pole – very welcomed on such a hot day!

Remember the Shire Hall is a space for all sorts of things – meetings, training days, sound healing, mini movers, music program, art classes, art groups, singing, cooking classes, private functions and loads more. Make sure

you remember that this space is available for you or your groups to hire. The Shire Hall kitchen has just undergone a renovation and will shortly have a coffee machine and a dishwasher up and running together with more practical bench work spaces.

Drop by and visit us on Wednesdays-Fridays 9am-2pm to have a look and a chat.



MyGolf is Australia's introductory golf program for 5 to 12 year olds. The program introduces kids to golf in a safe and friendly environment. Participants learn new skills, make new friends and most importantly, HAVE FUN!

REGISTER NOW AT MYGOLF.ORG.AU

Winchelsea Golf Club Term 1 6 Week MyGolf Program Fridays 5pm - 6pm March 2nd to 21st Total Cost: \$40 For more information contact Brent Karle brentkarle22@yahoo.com.au or 0410 641 462 To register https://www.golf.org.au/mygolf/programdetails?programId=24085



Winchelsea Community - We need you!

We have such a beautiful school at Winchelsea and we want to keep it that way. Winchelsea Primary School are on the hunt for a keen community member to take on the role as general gardener and maintenance to school grounds and buildings.

This position is around 8 hours a week. The school provides all equipment required to fulfil the duties of the role. If you are interested or know someone who might be, please contact the school on 5267 2134 between 8:45 am and 3:00 pm or email the school at winchelsea.ps@education.vic.gov.au.

Advertisement for STS Accounting Group, featuring a logo with overlapping blue and yellow shapes. Text: 'Your Taxation & Superannuation Specialists. Winchelsea 5267 2673 www.surftax.com.au'.



Breeze Health and Wellness, Exercise Physiology
32-34 Main Street, Winchelsea (old post office)
Chronic disease? Injured? Wanting improved athletic performance? We can help you manage, rehabilitate and prevent many common ailments through movement. Speak with your GP about a referral for a care plan. Private health accepted - no referral needed. Call Brenton on 0428 790 023 to discuss or email breezehealthandwellness@gmail.com Exercise is Medicine, Motion is Lotion. Move with Ease at Breeze.



What's happening in Winchelsea

Bus to the Hub

The evening program Bus to the Hub will recommence Thursday 2nd March. For enquiries and bookings, contact Jeanette Welsh, Social Support, Hesse Rural Health, on 5267 1202

Diamond Day

Saturday 4th March 12 till 4
\$5 entry
Senior Citizens Rooms, Harding Street Winchelsea
Everybody welcome

Singing

2023 will see the continuation of weekly singing Wednesday at 4.45pm at the Shire Hall.
The cost is as follows:
10 weeks - \$70
Concession - \$50 (10 weeks)
Children under 16 - free
You can also attend on a weekly basis - \$10 a session.
Email your registration to shirehall@winchhouse.org.au
This is an inclusive group that welcomes anyone who wants to experience the joy of singing with others

Winch Hospital Auxiliary

Next Auxiliary meeting
6th March, 3pm,
Globe Theatre Supper Room.

Winch RSL

The Winchelsea RSL opens in the afternoon of 1st Sunday of each month

The Shire Hall

The Shire Hall is becoming a hub for creatives, and there are many creative minds residing here in the Winchelsea community. Voices ring true every Wednesday evening - rumours say the sounds are like a tonic to the ear. The Riverlee arts collective bring their energy every alternate Wednesday, the building absorbs these beautiful qualities. Louise Hall is bringing her years of teaching experience to art classes - a huge opportunity for learning under the guidance of a skilled artist. If you read this and think you'd like to get involved contact the Winchelsea Community House or email Jill Evans at shirehall@winchhouse.org.au

There are two new groups forming in March:

- **Big Ideas** - with food, Friday nights starting Friday 17th March (more news to come)
- **Knitting and Knattering** - Thursday mornings, 10.00am - 12 noon starting Thursday 9th March

Jill Evans
Community Developer

Mini Movers

Only 2 more sleeps until our first Winchelsea Mini Movers session for 2023.

There are still a couple of spots available, so register your preschool children today and get them active and having fun with us.

The 6 week program starts this Wednesday from 1pm-1:45pm at the Winchelsea Shire Hall and will run every Wednesday until 6th April. The cost is \$90.

Please call the Winchelsea Community House on 5267 7028 or email reception@winchhouse.org.au



Winchelsea Community House and Shire Hall

Hours: Monday – Friday, 9.00am - 2.00pm

Address: 28 Hesse Street, Winchelsea

Phone: 5267 2028

www.winchhouse.org.au

Email: reception@winchhouse.org.au

Term 1 2023

Mini Movers Program

Wednesday afternoons 1pm to 1.45pm

Winchelsea Shire Hall Space

Suitable for 3-6 year olds

\$90 for six week program

Dates: 1/3, 8/3, 15/3, 22/3, 29/3 and 5/4

Bookings now open via email to

reception@winchhouse.org.au

WYLD

Youth Group

Friday 3rd March and

Friday 10th March

6pm to 8.30pm

FREE

Food provided

Meet at the Skate Park

Art Classes Creative Drawing

Tuesdays 1pm-3pm

Winchelsea Shire Hall Space

\$55 per class

Term 1, 6 classes \$330

All materials included.

Media: including ink, charcoal, conte, pencils and pastels, technical drawing instructions, relax through an explorative and enjoyable approach.

Suitability: All levels of experience and abilities.

Technically informative, providing skills, individuals progress in preferred direction.

Bookings and enquiries via email to Hinterlandartschool@gmail.com

PH: 0493 479 447

Experienced Tai Chi

Friday mornings 9.30am-10.30am

Winchelsea Community House Space

\$90 for 9 week term program

Commencing Friday 3rd February, 2023

Bookings now open via email to

reception@winchhouse.org.au

Crochet Group

Alternate Saturday afternoons 1.30pm

Winchelsea Community House Space

\$5 per session

First Aid & CPR Refresher Course

Saturday 25th February, 2023

Winchelsea Shire Hall Space

\$160 Full First Aid (8.30am-3.30pm)

\$65 CPR Refresher (8.30am –11.00am)

Bookings now open via email to

reception@winchhouse.org.au

Music Program

Suitable for 2-4 year olds

2/3, 9/3, 16/3, 23/3, 30/3 and 6/4

Thursday mornings 10am to 10.30am

Winchelsea Shire Hall Space

\$60 for six week program

Bookings now open via email to

reception@winchhouse.org.au

Art Classes Painting

Thursdays 1pm-3pm

from 2 March, 2023

Winchelsea Shire Hall Space

\$65 per class

Term 1, 6 classes \$390

All materials included.

A class that progresses through water-based mediums, to the use of oil paint, with a dual focus on subject matter and materials.

Suitability: All levels of experience and abilities.

Technically informative, providing skills, individuals progress in preferred direction.

Bookings and enquiries via email to Hinterlandartschool@gmail.com

PH: 0493 479 447

Singing Group

Wednesday afternoons 4.45pm-5.45pm

Winchelsea Shire Hall Space

\$70 for 10 week program

Concession \$50 for 10 week program

Under 16 Free

Bookings now open via email to

reception@winchhouse.org.au

Sound Healing Sessions

Wednesday 15th Feb and

Wednesday 29th March, 2023

7.30pm-8.30pm

Winchelsea Shire Hall Space

\$40 per session

Bookings now open

Please call Vicki on 0400 149 749



Market News

Our next Market is Sunday March the 5th

We have a great opportunity for community groups to fundraise by running the Devonshire teas in the Shire Hall, we have March available, please contact Leslie winchelseamarket@gmail.com

We're on the lookout for a social media extraordinaire to help us with our social media posts and general marketing tasks, please contact Kim on 0418 56670.

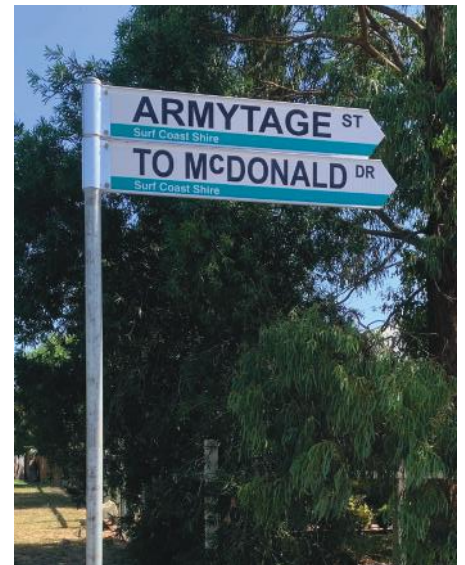
So our market can run smoothly we are looking out for volunteers to help, once a month early Sunday to assist with arriving stallholders and being a general happy helper.



Winchelsea Historical Society

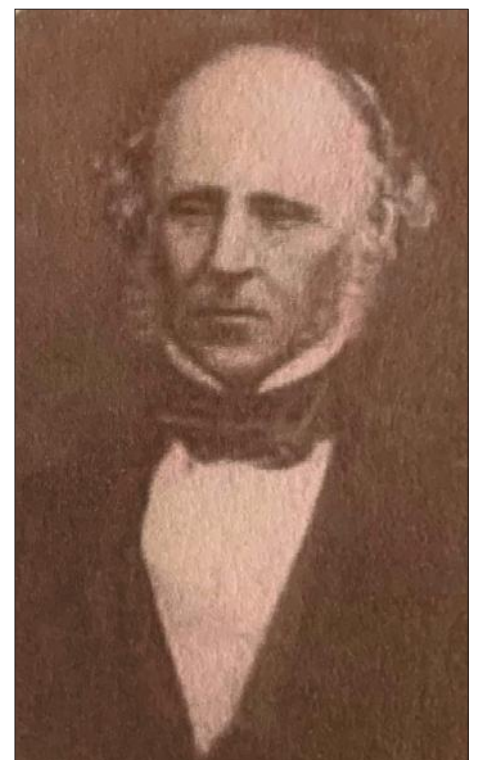
Winchelsea Street Names

Armytage Street



ARMYTAGE STREET

Thomas Armytage and George Armytage were the original owners of Ingelby homestead.



Simco Plumbing and Gasfitting
 24/7 Emergency service Ph:0400643976

- All General Plumbing and Gasfitting
- Roof and Gutters, Hot Water service changeover
- Split Systems, Air Conditioning and Wood Heaters
- Irrigation, Septic and Treatment plants
- Excavation, Bobcat and Tipper
- Rain water Tank installation
- Renovations and Extensions
- Gas conversions and servicing

Simon McGillivray
 Lic:109610. Free quotes, Fast and friendly service

Winchelsea Star

Articles are most welcome and must carry the name and address of the sender.

Weekly deadline is 5pm Friday.

Copy for sports results and weekend events is Sunday 6pm (4pm for hard-copy articles/results left at IGA) unless by prior arrangement.

Copy should be emailed to news@winchelseastar.org.au or left at IGA Supermarket.

The Winchelsea Star reserves the right to edit or not publish any article.

Views expressed are not necessarily those of the Winchelsea Star or its Committee.

500 online subscribers, 250 copies printed for outlets around Winchelsea.

Free subscription to digital version at winchelseastar.org.au

© Winchelsea Star Org. Inc.
All rights reserved.

Winchelsea Star Organisation Inc.
Reg. No. A1479, ABN: 57 207 411 958
winchelseastar.org.au
Po Box 5, Winchelsea, Vic, 3241

Editors:

Carrie Fogan, Yvonne Stevens
Judy Cameron
editor@winchelseastar.org.au

Advertising:

Sasha Gauntlett and Neil McInnes
advertising@winchelseastar.org.au
0408 102 802

Layout/Sub Editors:

Susan Corby, Charles Corby
Stuart Fountain
production@winchelseastar.org.au

Committee

President: Mick O'Mara
president@winchelseastar.org.au

Treasurer: Cathy Cheadle
treasurer@winchelseastar.org.au

Secretary: Tony Phelps
secretary@winchelseastar.org.au

Committee Members:
Linda Carter

Printer: Mud Group
Website: Winch Websites



WINCHELSEA CONCRETING

• Driveways • Sheds • Decorative Concrete • Raft Slabs

Robert Murphy

☎ 0438 235 237

✉ winchelseaconcreting@outlook.com



mels MEL'S DANCE CENTRAL

2023 DANCE ENROLMENTS NOW OPEN!

Winchelsea dance
classes commence
1st February 2023

REGISTER NOW

www.melsdancecentral.com.au

Pre-School - Adults
Beginner - Advanced Levels

Mowers & Chainsaws

Repairs to all makes and models of ride on mowers, domestic mowers, pumps, chainsaws, brushcutters and small engines.

Trading Hours: Mon - Fri 8am - 5pm Saturday 8am - 12 noon

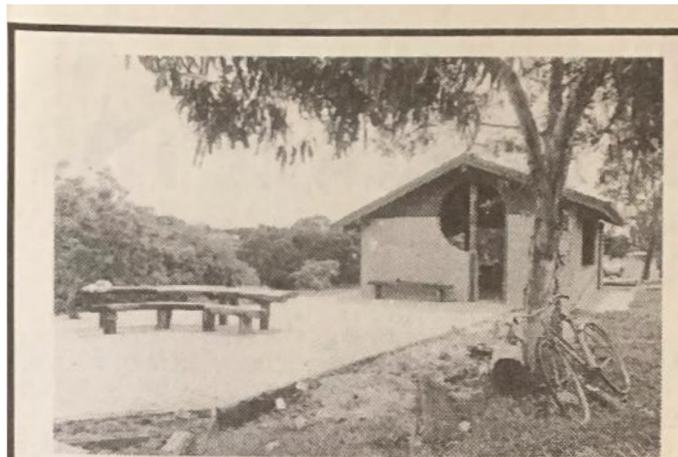
5267 2266 Cnr Princes Hwy & Lennox St Winchelsea

www.allaboutmowers.com.au

accounts@allaboutmowers.com.au



The Mud Hut



● The mud brick picnic shelter which looks out over the Barwon River at Winchelsea.

Winchelsea's picnic shelter

The Winchelsea community has built a picnic shelter that would gladden the hearts of the town's pioneers.

The mud brick and rough hewn bush timber shelter looks out over the 1867 bluestone bridge that once enabled the pastoralists to broach the lands of the rich western district. Nearby is the town's first substantial building, the Barwon Hotel, built in 1842 to slake the thirst of travellers on the arduous Cobb and Co. coach run. It still exists behind a newer facade.

Although the shelter is the town's most recent construction, it evokes the atmosphere and craftsmanship which characterised earlier days in the area.

The riverside setting at Winchelsea has always been a popular pausing point for travellers on the Princes Highway between Melbourne and Warrnambool. The shelter is part of a long term tourist development plan for the picturesque and peaceful location. It was sponsored by the Winchelsea Social Development Committee under the Employment Initiatives Scheme.

Three full time local people were employed for 17 weeks on the project and a consultant architect from Deakin University was engaged to show what could be done with a potentially mundane subject.

The shelter is of post and beam construction, making use of rough sawn and bush timber. The main supporting beam was hand adzed to shape from a single tree. The walls are mud brick infill and was one of the first construction projects to make use of a widely hailed local invention, a mud brick compressor, which compacts the bricks quickly by squeezing out excess moisture and making them ready to use almost immediately. An interesting visual effect has been created by the positioning of a half crescent opening at both ends, giving the look of breaking waves from inside the shelter.

The rustic look extends to its interior, where red gum and railway sleeper tables and benches have been installed. Space has also been provided inside to enable use of portable barbecues. The Shire of Winchelsea was responsible for landscaping the area surrounding the shelter, which comprises an attractive brick paved area complete with tables, chairs and two solid fuel barbecues.

Ample parking, toilets and a swimming pool nearby complete Winchelsea's latest tourist facility and salute to its colorful past.

Indoor pool option for Surf Coast Aquatic and Health Centre

Surf Coast Shire Council will consider changing scope for the Surf Coast Aquatic and Health Centre to include an indoor 25-metre pool.

A report to be considered at Council's meeting on 28 February outlines a shift in dynamics surrounding the project with the creation of a new Commonwealth Games aquatic facility at Armstrong Creek.

The Victorian Government has announced that a 'community pool facility' will remain as a legacy asset from the 2026 Games.

Expert industry research indicates that use of that facility will impact patronage of the Surf Coast Aquatic and Health Centre.

The growth areas of Armstrong Creek and Mount Duneed had been anticipated as key catchments for the Surf Coast Aquatic and Health Centre.

"These Commonwealth Games announcements, and our research findings mean that the landscape has changed considerably since Council approved existing plans for the SCAHC in June," Mayor Liz Pattison said.

"Early modelling indicates that the Armstrong Creek centre would reduce our catchment and demand, particularly for activities like Learn to Swim, warm water exercise and hydrotherapy, impacting our visitation and revenue.

"We said late last year that we would need to seek better understanding of how the two centres might be able to complement each other, and how the Armstrong Creek centre might influence our project.

"Expert industry research has provided us with better perspective and a report will go to our 28 February Council meeting for consideration, putting forward options including changing the scope of our project."

Existing plans for the Surf Coast Aquatic and Health Centre include two indoor warm water pools for learn to swim, warm water exercise and hydrotherapy, and a 25-metre outdoor pool intended to be enclosed as soon as feasible, along with allied health suites, program spaces, a gym and supporting amenities.

An alternate scope option being considered includes an indoor 25-metre lap pool and one 20x10-metre indoor warm water pool which can be programmed for learn to swim, exercise and hydrotherapy, with option for addition of a further indoor learn to swim pool.

This option includes the same overall components, but re-prioritises and alters the sequencing of delivery to better meet the needs of our community given the impact of an Armstrong Creek community pool facility.

Council is continuing to seek funding to bridge a \$3.57 funding shortfall for the project.

Free Community Service Advertisements

Services and Activities in Winchelsea



TRAIN SERVICES

To Geelong

Mon - Fri

6:41 am, 7:59am, 11:34am,
2:01pm, 7:37pm

Sat and Sun

9:35am, 1:36pm, 7:18pm

To Warrnambool:

Mon - Fri

9:29am, 2:56pm, (to Colac
5:27pm), 6:45pm, 8:53pm

Sat and Sun

8:47am, 2:49pm, 8:37pm

Country Women's Association



7pm Second Wednesday of Month
Winchelsea Senior Citizens' Hall

Bus to the Hub

For reservations on the weekly bus
to the Eastern Reserve Hub,
please phone 52671202.

Surf Coast Mobile Library

Surf Coast Mobile Library
parked in Hesse Street
(outside Shire Hall) on Fridays
between 2:00 and 5:00pm
unless it is a Public Holiday.

Winchelsea Taxi

0429 672 888 or 5267 2888

Wheelchair accessible
10 seater bus available.

Winchelsea SES

Meeting and training
2nd Wednesday

Training 4th Wednesday

Visitors and inquiries welcome

0408 102 802

Winchelsea and District Combined Probus Club



Meets 1st Monday of the
month at 10am. Senior
Citizens Rooms, Harding
St, Winchelsea. New
members always
welcome.

Enquiries Linda 0439 817 263.

Body Therapy Classes

Yoga, Pilates, Qi Gung and Mindfulness Meditation Practices

Tuesdays 6.15pm \$13 Cash
Catholic Church Hall -School Term Only

Dr Haidee Benning, 0428 177 964

Winchelsea Playgroup

Every second Thursday 10am-12pm
St Thomas Anglican Church Hall
cnr Barwon Tce and Hopkins St, Winchelsea
Contact: Melissa 0456181268
Facebook - Winchelsea Playgroup 2019

New families welcome

Winchelsea Girl Guides

Our Unit meets at the Catholic Church
Hall, Harding St Winchelsea
each Monday 4.30pm-6pm
All girls 5yrs- 15yrs Welcome!
Contact Yvonne Orchard 0448 672 630
or Bonnie Stokes 0401 386 274

1st Modewarre and Winchelsea Scout Group

Joey's: Tuesdays of school term 5-6pm
Cubs: Mondays of school term 6:30-8pm
Scouts: Tuesdays of school term
6:30-8:30pm

All at Modewarre Hall, Cape Otway Rd
Venturers: Wed at Walton's Rd Venturer Den
Contact Marie McPadden 0409 330147

Winchelsea Transfer Station

Opening Hours

Monday	Closed
Tuesday	2pm-4pm
Wednesday	Closed
Thursday	2pm - 4pm
Friday	Closed
Saturday	1.30pm - 3.30pm
Sunday	9.30am - 12.30pm

55 Cressy Road, Winchelsea.

Accepts household garbage,
mixed commercial and industrial waste,
mixed construction and demolition
waste. Accepts recyclable materials.
Accepts one recycle bin two waste bins.
Does NOT accept clean fill.

Introducing: The Barwon River Community Exchange

I am excited to be a part of a progressive community initiative that has evolved to service the wants and needs of the people of the land between the hills of the Otways to the mouth of the river at Barwon Heads: the Barwon River Community Exchange (BRCE).

The BRCE is a platform that facilitates trading and exchange of goods and services between its' registered participants; "tokens" replace AUD as the currency in most transactions, however it is permitted to have a combination of both in certain circumstances. Individual participants have a tally of tokens flowing inwards or outwards recorded on a central database, the aim being to keep your account balance at zero indicating that you have both offered and received "favours" from other participants.

The beauty of the BRCE is that anyone can be involved; BRCE recognises that all people have skills and resources that hold value for another, and alternatively, all people have needs and wants that can easily be alleviated by another with the requisite skills or resources at hand.

What might be second nature or available abundantly to you may be offered through BRCE's central platform in exchange for something you need, or something that enhances your life or simply brings you pleasure. A "treat" that you might be reluctant to spend cash on

becomes available through BRCE tokens when you engage as a participant.

I am enthused to raise awareness of this great initiative as I have personally experienced the benefits of the exchange. I have offered simple gardening services (something I am not trained in but enjoy greatly) to a family that needed help to tame an overgrown area; the tokens I received were then transferred to the account of another participant who used their dehydrator to preserve some produce for me. BRCE allowed the transaction to flow seamlessly.

The Barwon River Community Exchange aims to enhance to lives of all. The program is focused on building strong, mutually beneficial relationships within a community that is inclusive; it values the myriad of experience across all people and allows them to manifest as links between neighbours helping a neighbour.

"When one is helping another both are strong". This is the sentiment of BRCE members and the spirit in which we participate; giving and receiving are valued equally as they are the foundations of the connections that weave together to form resilient, progressive communities.

Kerrie Russell

Deep disappointment in duck hunting call

RSPCA Victoria is deeply disappointed in the Victorian Government's decision to proceed with the 2023 duck hunting season despite significant animal welfare concerns, declining waterbird abundance and lack of support within the community and is imploring a review of the decision.

RSPCA Victoria CEO, Dr Liz Walker said she was dismayed by today's announcement that the 2023 duck hunting season will proceed in April causing injury, pain and suffering to thousands of native ducks.




St Vincent de Paul Society
good works

Covering Meredith, Bannockburn,
Anakie, Lethbridge, Inverleigh,
Teesdale, Shelford,
Elaine and Winchelsea

52219170

Monday - Friday 9am to 2 pm
<http://www.vinnies.org.au>

A caring Catholic
organisation offering
"a hand up" to all people
in need.

Winchelsea Men's Shed



For The Community
51 Hesse Street
Every Wednesday from 9:30am
New members always welcome

For more detail contact:
Ray Atkinson (Co-ordinator)
0407 839 139
or
winchmensed@gmail.com

Need a job done?
Woodworking jobs,
furniture repairs, small jobs.
Drop in and talk to us.



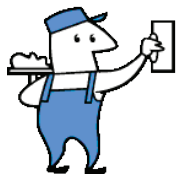
**Winchelsea
Supermarket**

Trading Hours
Monday to Saturday
8.30am to 7.30pm
Sunday
10am to 7pm
Ph: 5267 2676
29 Main St, Winchelsea

Plasterer & Painter

Daryl Hecker

Domestic & Commercial
Renovations & Repairs
Suspended Ceilings
Dustless Sanding
New Homes
Extensions



Ph 0419 194 799

Antique Repairs

By **Doug Burns** est. 1976

- All Furniture
- French polishing
- Carving
- Veneering
- Wood Turning
- Porcelain



Unusual Requests Welcome

180 Barwon Terrace, Winchelsea

0428 672 704

B & H Modifications Bob Verity

55 Stephenson Road
Winchelsea 3241

Ph: 5267 2467

Mobile: 0411 610 678



Industrial Sewing Machine Work

Caravan Annexes, Trailer Covers,
Shade Sails, Alterations and
Repairs to
Camping and Tents.

Clear PVC Blinds

Repairs to CLEAN Horse Rugs

No Job Too Small

Email: bobverity@southernphone.com.au

Knuckey's Winchelsea

Ph: 5267 2011

Knuckey's have in stock a complete range of batteries to suit tractor, heavy machinery, cars, utes

The largest range of the best oil for your vehicles—**CASTROL**—
'when only the best will do'

The largest range of V belts.

A, B, C, D M Sections

Bolts and nuts for all occasions

Steel cut to size

AFS BOOKKEEPING



"Your local bookkeeper"

Bookkeeping
Administration

Payroll

BAS Services

Xero / Myob

Reckon / Quickbooks

Registered BAS Agent

Angelique Snetselaar

0456 077 485

info@afsbookkeeping.com.au

www.afsbookkeeping.com.au



Women's Workshop

Wednesdays 2:00 to 4:30pm.

Learn practical home maintenance skills.

Learn basic woodworking design & construction

techniques and hand tool use.

Discuss your ideas/needs with us.

SMS Stuart - 0468 358 282 at the Winchelsea Men's Shed

email: winchmenshed@gmail.com



mainly music
est. 1990

Fun, Interactive music sessions for pre-school children (0-4 y.o.) and parents/caregivers

When: Mondays from 10 to 11 am
(runs during school terms)

Where: St Thomas' Hall
25 Barwon Tce.

To Enquire ring: **0407838256**

direct TEMPORARY FENCING

FOR HIRE - SUPPLIED & ERECTED - 7 DAYS
GEELONG - BELLARINE - COLAC - SURF COAST
PHONE CAM 0417 310 800

DownRyte Excavations



- Excavations
- Drilling and Piling
- Rock Placement
- Tree and Stump Removal

Sean Hunwick

Mobile: 0409 447 288
Email: downryte@activ8.net.au

Water Delivery

WAZZA'S WATER CARTAGE

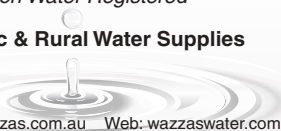
Stainless Tanker Up to 22,000 ltr loads
Barwon Water Registered

Domestic & Rural Water Supplies

Call Wazza

Mob: 0428 877 260

Email: wazza@wazzas.com.au Web: wazzaswater.com



Kyeema Rural Fencing Pty. Ltd.

Jason Armstrong & Jay Hawker

1080 Prices Lane, Ombertley, Victoria, 3241

0419 565085 (Jason)

0416 585817 (Jay)

kyeemafam@kyeemafam.com.au

Also incorporating domestic and rural tree trimming services.



Figure Drawing Winchelsea

Ever wished you could draw the figure from life? Learn and explore through friendly facilitation.

Mondays
6.30 - 8.30 pm

*Commencing Monday 13 Feb 2023 - Monday 3 April
\$25 per session \$200 x 8-week course
Casual \$30

*Experienced artists work at own pace or enjoy tutoring while sipping a glass of Dinny Goonan Wine!

Creative Drawing

Learn observational drawing skills and explore drawing materials.

Technical drawing instructions, facilitated through a relaxed, explorative and enjoyable approach.

Shire Hall Winchelsea
Tuesday 1 - 3pm

Cost: \$55 per class
Term 1, 6 classes \$330

Commencing Tuesday 28th February

Painting

A class that progresses through water-based mediums, to the use of oil paint, with a dual focus on subject matter and materials.

Shire Hall Winchelsea
Thursday 1 - 3 pm

Cost: \$65 per class
Term 1, 6 classes \$390

Commencing Thursday 2nd March

Suitability: all levels of experience and abilities.

Technically informative, providing skills, individuals progress in preferred direction.

*All materials included.

Hinterland Art School Winchelsea

Bookings and further information
Contact: Hinterlandartschool@gmail.com
Phone: 0493 479 447

Hinterland Art School Winchelsea acknowledges the support of **DEVELOP: 2022 Arts Development Seed Fund**



Winchelsea Land and Rivercare

Working bees are back for 2023

First Saturday of the month. 9am – 10.30

March 4, April 1, May 6.

Meet at Guye Reserve, Barwon Terrace

This month will be spreading mulch and weeding.

All helpers welcome.



and



are excited to present

IMPROVAGANZA

an evening of Theatre-sports style games in the style of 'Whose Line is it Anyway?'

Saturday 11th March from 7:30pm at the Colac RSL

Tickets \$10 trybooking.com or \$15 at the door.

Come along and enjoy spontaneous comedy from audience suggestions.

For more info phone 0439 329 713 or email admin@ocrfm.org.au
www.ocrfm.org.au



Goodbye, Single Use Plastics

From 1 February this year, items like plastic straws, cutlery and cotton buds are banned from sale and supply in Victoria.

Single-use plastics currently make up a third of Victoria's litter, pollute our precious waterways and harm wildlife. We know this firsthand, as we remove seven tonnes of rubbish from our water and sewer networks a week – including single use plastics like cotton buds, not to mention things like wet wipes, paper towels and fruit stickers. It's a problem that's both expensive and dangerous, as it contributes to blocked drains, which could lead to a sewage spill. Not what anyone wants! If in doubt as to what can be flushed, remember just the three Ps (Pee, Poo and Paper.) For more info on what not to flush, visit <https://www.vic.gov.au/single-use-plastics>



MRP Steelworx
 Matthew Partridge
 p 0418 672 334
 e mrpsteelworx@yahoo.com.au

Welding Service

- Onsite welding
- Farm maintenance
- Farm machinery & equipment repairs
- Cattle & sheep yards
- Custom built trailers
- Supply & install gates

NO MATTER WHAT YOUR PROBLEM, DODDS ELECTRIX CAN DEFUSE THE SITUATION.

RURAL, INDUSTRIAL, COMMERCIAL. DOMESTIC
 PHONE 0438 887 360
 EMAIL: DODDSY@FASTMAIL.FM
 PO BOX 36 BIRREGURRA, VICTORIA 324
 REC: 17520 ABN: 64 581 250 880



5234 6585 0417 385 984
 For all your domestic & stock water.
 Also available for road and civil construction
 Local owned and operated.

OZ TREES NURSERY & TREE PLANTING SERVICES

- Affordable seedlings—over 200 species
- Complete plantation service—farm forestry, shelter, aesthetics
- Deep ripping & mound ploughing. Rotary bed forming
- Our experienced staff will help you select species for your site conditions and needs


Also available—tree planting tools, milk cartons, plastic tree guards & bamboo stakes

569 Warrowie Rd. Colac
 P: 5233 6280 F: 5233 6393
 E: info@oztrees.com.au
 W: www.oztrees.com.au
 Open Monday—Friday
 9am—4:30pm



Phone OzTrees for professional advice,

TRENCHES & HOLES PTY LTD.



PHILLIP ROBERTSON
 ☎ 0427 672 945
WINCHELSEA

- General Earth Works
- Driveways
- Trencher
- Kanga Loader
- Grader
- Excavator Work (3.5 & 6.5 Tonne)
- Tip Truck
- Rock Breaker
- Post Holes & Shed Footings

A.B.N 74006896898

WINCH WEBSITES
 WEB SOLUTIONS SIMPLIFIED.

WEBSITES

GROW business INCREASE reach SAVE time



Find out what a website could do for you
winchwebsites.com.au
 04 887766 20

CONCRETER
 Alister Aitken

No job to big or small

- Driveways - Carports - Crossovers - Footpaths - Sheds Slabs - Colored Concrete - Concrete sealing - Exposed Aggregate - & more -

Call or text for a no obligation free quote

Servicing our local Winchelsea & Surrounding Areas

alaitken.aa@gmail.com or Alister - 0411 871 950

A.B.N 47 228 574 460



St Vincent de Paul Society
good works

Covering Meredith, Bannockburn, Anakie, Lethbridge, Inverleigh, Teesdale, Shelford, Elaine and Winchelsea

52219170

Monday - Friday 9am to 2 pm
<http://www.vinnies.org.au>

A caring Catholic organisation offering “a hand up” to all people in need.

Transmission lines plans unclear

The Victorian Farmers Federation (VFF) has demanded the Victorian Government urgently clarify the rights of farmers set to be impacted by the huge expansion of Victoria's electricity transmission infrastructure.

VFF President Emma Germano said despite the government's offer of landholder payments for impacted landholders, farmers deserved the right to a fair compensation process and the ability to have access to any documents that determine the transmission process as well as avenues to appeal transmission lines on their private property.

"We're demanding the Victorian government urgently clarify on what grounds farmers can appeal, how they can gain access to the materials needed to appeal and who they will appeal to. Regulatory oversight must be independent and transparent."

"The future of farmers and communities along the hundreds of kilometres of new powerlines is incredibly unclear. We need to know whether the government

has decided to steamroll through these projects and what that means."

Ms Germano said despite numerous meetings with the Victorian Government, including as recently as this week, farmers and the community remained in a perilous position.

"The VFF has been calling on decision makers to prepare for the gradual and fair transition to renewable energy and infrastructure since 2019."

"The reality that we're now forced to choose between turning the lights on or enjoying produce from some of Victoria's best agricultural regions is not good enough," Ms Germano said.

The VFF will continue to seek further information from the Victorian Government regarding this issue.



Winchelsea Girl Guides are seeking volunteers

Winch Guides are looking for female adult volunteers interested in joining an enthusiastic, self-motivated team working with girls 5-15yrs in Winchelsea.

Training provided free. Membership of a world wide organisation, travel opportunities, and friendships.

Help us to provide leadership development opportunities for girls and young women, as well as promoting fun and friendship.

Phone Yvonne 0448 673 630
or Bonnie 0401 386 274



WaterAssist Home

The WaterAssist Home Program helps homeowners with high water use to save water and save on their water bills.

The program includes a home water use assessment and a reliable plumbing service to repair or replace inefficient water fittings valued at \$360.

Learn more on our website
<https://www.barwonwater.vic.gov.au>



Only 2 more sleeps until our first Winchelsea Mini Movers session for 2023 The program starts this Wednesday from 1pm-1:45pm at the Winchelsea Shire Hall and will run every Wednesday until 6th April. The cost is \$90.

JUNIOR NETBALL TRAINING

U/17S & U/19S

MONDAY 6TH MARCH

23 @ 5:15PM

U/13S, U/15S

THURSDAY 9TH

MARCH 23 @ 5:15PM

BLUES
WINCHELSEA F.N.C.

Applications are now open for AgTech Seeds, Round Three

A group of aspiring agtech founders and researchers from across Victoria are developing solutions to major issues in agriculture, including offering intelligent and automated alternative energy options, improving dairy herd productivity through genetics, and revolutionising almond storage.

The 12 teams have been accepted into the latest round of Rocket Seeder's AgTech Seeds program, where they will spend the next three months accelerating their innovations. The teams will cover topics including customer discovery, value proposition development and business models, as well as how to form startup teams, refine communications and raise funds.

This is the second group of innovators and researchers to take part in AgTech Seeds, run by Rocket Seeder and program partner Cruxes Innovation, with support from LaunchVic and Agriculture Victoria.

Rocket Seeder Managing Director Emma Coath said "These teams are at different stages of development. Some



are right at the beginning in the concept development stage, while others are operational with customers but are looking for next-stage development and funding.

The teams of founders, entrepreneurs, researchers and farmers are using online marketplaces, satellite technology and remotely piloted aircraft systems on innovations that improve agriculture sustainability, productivity and profitability.

One group has developed software for dairy farmers that displays in-depth data on each individual cow's performance and helps identify potential genetic gains, while another is developing storage pods

for almond growers to streamline harvest and processing systems.

Teams are developing vertical farms to revolutionise the way fresh vegetables are bought and stored, reducing food miles and extending supermarket shelf life for fresh produce.

Other teams are exploring alternative fertilisation methods for crop seeds, a central trading platform for wine grapes, and the use of hydroponics to create "self-contained farms" which can be used to grow cattle fodder with less water and fertiliser, ideal in times of drought and other natural disasters.

Devon Soutar from the LaTrobe Valley in Gippsland is among the latest participants in the AgTech Seeds program.

Devon and his father, Stephen, have established Alternate Energy Innovations, developing intelligent and automated energy solutions that give farmers and irrigators control of their costs, time and resources.

"Ultimately, we want to create a more sustainable energy grid, and we hope the AgTech Seeds program will fast-track our business model development to the point where we can deliver our product out, to scale."

Applications are now open for AgTech Seeds Round Three. There are 12 positions available for the program which is fully funded for successful applicants. Applications close on 26 May 2023.

For more information or to apply visit www.rocketseeder.com/agtechseeds

Free Junior Memberships 2025!



Winchelsea Football Netball Club are offering free memberships for our junior players for the 2023 season.

SOCIAL MEMBERSHIPS - \$30

(INCLUDES FREE ENTRY FOR ALL HOME GAMES, DISCOUNTED THURSDAY NIGHT MEALS & MEMBERSHIP RIGHTS).

*IF PURCHASED PRIOR TO RD 1 - YOU WILL RECEIVE A FREE MEAL AT OUR BLUES BISTRO.

Winchelsea Churches



Winchelsea Uniting Church

Hesse St, Winchelsea 3241
uca.winchelsea@gmail.com
0475 777 301
Services 9.30am Sundays

St John's Catholic Church

Harding St, Winchelsea 3241
Father Joseph Panackal
0404598558

St Thomas' Anglican Church

Barwon Tce, Winchelsea
Rev'd A. Lynne Clarke
stthomaswac@gmail.com
0477 672 042

ST JOSEPHS PARISH - MASS TIMES

**St. John's, Winchelsea,
Sat 6pm March 4, 11, 18, 25**

Sacred Heart, Inverleigh,
Sun 4pm, Mar 19

St. Brigid, Anakie,
Sun 9am March 5, 19

St Joseph's, Meredith,
Sun 9am March 12, 26

St. Mary MacKillop, Bannockburn,
Sun 11am March 5, 12, 19, 26

Thought for the Week

“Brother, let me take out,
the speck that is in your eye,”
when you yourself do not see the log
that is in your own eye?
You hypocrite,
first take the log out of your own eye,
and then you will see clearly
to take out the speck that is in
your brother's eye.

John Bader
Accredited Lay Preacher

Launch of Headspace in Colac

Dan Tehan, Member for Wannon said he was delighted that headspace in Colac is now officially launched. “I am very committed to ensuring young Australians get the mental health advice, counselling, or treatment, they need.”

Colac Headspace was allocated \$3.5 million under the Coalition Government in 2019, with Western Victoria Primary Health Network announcing in 2021 that Barwon Health would operate the Commonwealth Government funded headspace in Colac.

The Headspace program improves access for young people aged 12 to 25 years who have or are at risk of, mental illness. Headspace offers early intervention services across mental health, related physical health, social and vocational support, and alcohol and other drug use.

Mr Tehan said the availability of mental health services for rural and regional families is so important, particularly, with serious mental health issues often showing at their highest two to three years after a crisis, pandemic, or natural disaster.



SAFER COMMUNITIES WINCHELSEA

Fuel tax leaves farmers running on empty

The Victorian Farmers Federation (VFF) says proposed changes to the Fuel Tax Credits Scheme as flagged by the Grattan Institute would further increase the already sky-high cost of living pressures on consumers and further financially strain farmers.

VFF President Emma Germano calls for Federal Treasurer Jim Chalmers to urgently rule out changes to the Fuel Tax Credits Scheme ahead of the Federal Budget.

“Farmers are already feeling the pinch with high input costs on a number on fronts, which inevitably get passed through our food supply chain and onto consumers at the supermarket checkout.”

“It's essentially a tax on food at the worst possible time and an unnecessary cost farmers can't burden.”

“Today's ninth successive interest rate

hike is the latest attempt to control the spiralling cost of living. This tax does the opposite and has the potential to send food costs soaring,” Ms Germano said.

Ms Germano added the flawed proposal to extend the fuel excise to off-road vehicles hasn't been thought through properly.

“A road tax on vehicles that don't use the roads doesn't pass the pub test.”

“If farmers had an economically viable and easily accessible alternative to using diesel to produce and transport food and fibre we would use it.”

“The reality is the industry doesn't have a choice and the modern infrastructure we've been calling for has been ignored for years,” Ms Germano said.

The VFF will continue to support the NFF on its advocacy with the Federal Government on this issue in the lead-up to May's Federal Budget.

Chief Health Officer Update

COVID-19 Weekly Data

There were 3,052 COVID-19 cases reported in Victoria this week, a decrease of 8.5 per cent on the previous week. The average daily number of new cases this week was 436, down from 478 last week.

The seven-day rolling average of patients with COVID in Victorian hospitals is 101. There are currently 94 COVID patients in Victorian hospitals, with 4 patients in intensive care, including 1 cleared case.

Of Victorians aged 50 to 64 years, 80.1 per cent have had their third dose and 32.7 per cent have had their recommended fourth dose. Of those aged over 65, 90.9 per cent have had their third dose and 68.7 per cent have had their fourth dose. 70.6 per cent of people aged 16 and over have had three doses.

33 COVID-related deaths were reported to the Department in the past week, a 71.1 per cent decrease compared to the same period the previous month.

The total number of reported COVID-related deaths in Victoria since the pandemic began is 7,317.

Advice for COVID-19 boosters

Victorians who have not had a Covid vaccination or confirmed infection in the past six months are now eligible for a booster, irrespective of how many prior doses a person has received.

For those not infected or vaccinated in the past six months, a 2023 booster is recommended for:

- All adults aged 65 years and over
- Adults 18-64 years who have medical comorbidities or disability with significant or complex health needs

For those not infected or vaccinated in the past six months, a 2023 booster should be considered for:

- Adults 18-64 with no risk factors for severe Covid
- Children and adolescents aged 5-17 who have medical comorbidities or disability with significant or complex health needs

Victorians are encouraged to book a free booster appointment through their local GP or pharmacy. You can find your nearest vaccination provider through the Vaccine Clinic Finder.

Wool classers in great demand

South-west Victorian sheep farmers and contractors are in desperate need of wool classers as an industry-wide shortage starts to bite.

South West TAFE wool classing teacher Stuart MacPherson said there were plenty of well-paid job opportunities for experienced people to work in the field. It's very hard to find wool classers, especially those of the right calibre who are performing at the required level.

South West TAFE will deliver a wool classing course starting in early March at Maroona near Ararat.

Wool classers must complete the course to get their ticket.

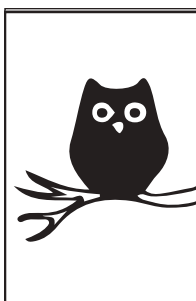
"Wool classing is important because when the wool is sold as being classed by a registered wool classer, it gives the buyer an assurance of quality," he said.



**SOUTHERN
GRAIN STORAGE
PTY. LTD.**

AG SUPPLIES FERTILISER GRAIN STORAGE SEED CLEANING

(03) 5267 2351



Café La Hoot

have you tried
'owl' coffee?

1 willis st cafelahoot@gmail.com 0407 528 999

DAVIC AG**CONTRACTING AND EARTHMOVING**

For all your harvesting needs

Mowing, raking, round bailing, paddock prepping, spreading and sowing

Call Dave on **0417 579 973** Bambra

52672192 **R & K Creative Framing**
for all your framing needs

free quotes
pension discount
specialist in Age &
Disability Modifications

Ray & Kim Jansen
10 Witcombe st
Winchelsea 3241

Ray The Home
Maintenance **HANDYMAN**
abn 47928623462

0414672192



Winchelsea Community Facebook pages

What's on in Winchelsea

**FLYERS, LOCAL EVENTS,
SMALL BUSINESS,
PROMOTING WINCHELSEA**

facebook.com/WhatsoninWinchelsea

Winchelsea FREE

FREE ONLY

facebook.com/groups/winchelseafree

Winchelsea Community Information AUSTRALIA

POSITIVE DISCUSSION

facebook.com/
groups/207538644446972

Winchelsea Classifieds 3241

FOR SALE ONLY

facebook.com/
groups/216942861684082

Winchelsea Lost and Found

LOST PETS

facebook.com/
groups/768187693217518

Winchelsea Op Shop

facebook.com/
HospitalAuxiliaryOpShopWinchelsea

Winchelsea Tea Rooms (Community Centre)

facebook.com/WinchelseaTeaRooms

Winchelsea Community House

facebook.com/
winchelseacommunityhouse

Winchelsea Coronavirus Community Support Group

facebook.com/
groups/2676957719207927/

The Green Winchelsea Residents

facebook.com/
groups/515322772623126

Growing Winchelsea Inc

facebook.com/growingwinch

Winchelsea Star

winchelseastar.org.au/step/subscribe/

Winchelsea Movie Club

facebook.com/winchelseamovies

Winchelsea Community Market

facebook.com/
winchelseacommunitymarket

Winchelsea Land and River Care Group

facebook.com/envirowinchelsea/

Upper Barwon Landcare Network

facebook.com/UpperBarwonLandcare

Winchelsea & District Historical Society Inc.

facebook.com/
Winchelseaanddistricthistoricalsociety/

Winchelsea Wildlife Shelter

www.winchelseawildlifeshelter.com/

SCARS - Surf Coast Animal Rescue Service

facebook.com/groups/415211698950674

Winchelsea Gardeners

facebook.com/
groups/779878518703025

Winchelsea & District Historical Society

facebook.com/
Winchelseaanddistricthistoricalsociety/

Winchelsea Repertory Society Inc

facebook.com/winchrep/

Winchelsea Globe Theatre

facebook.com/Winchelsea-Globe-
Theatre-164790897641678

Winchelsea Uniting Church

facebook.com/winchelseaunitingchurch

St Thomas' Anglican Church

facebook.com/StThomasWinchelsea

St John the Baptist Catholic Church

facebook.com/pages/Winchelsea-
Catholic-Church/101775670163180

Winchelsea Mainly Music

facebook.com/
groups/668500343953191/

Winchelsea Health Club

facebook.com/WinchelseaHealthClub

Winchelsea Playgroup 2019

facebook.com/
groups/551663435367031

Winchelsea Girl Guides

www.guidesvic.org.au/

Winchelsea/Modewarre Scouts

facebook.com/1stModewarreScouts

Winchelsea Fire Brigade

facebook.com/winchelseafirebrigade/

Winchelsea SES

facebook.com/groups/WinchSES

Country Women's Association - CWA Winchelsea Branch

facebook.com/pg/CWAWinchelsea/

Winchelsea Bowls Club

facebook.com/Winchelsea-Bowls-
Club-533783333344345/

Winchelsea Blues Cricket Club

facebook.com/groups/8999049476/

Winchelsea Blues FC

facebook.com/WinchelseaFNC/

Mel's Dance Studio

facebook.com/melsdancecentral

Winchelsea Golf Club

facebook.com/winchelseagc/
facebook.com/
groups/1324943804676697

Winchelsea Kyokushin Karate Club

facebook.com/winchelseakyokushin

WYLD Winchelsea Youth Leisure and Drop in

facebook.com/
groups/569737570027065/

Lions Club of Winchelsea

facebook.com/LionsWinchelsea

Winchelsea Probus

10am 1st Mon month at Sen Citz Hall



Aquafire Healing
NATUROPATHIC MEDICINE

**Transforming Your Health
Through the Healing Power of Nature**

NATUROPATHIC MEDICINE • HERBAL MEDICINE
NUTRITIONAL MEDICINE • HOMOEOPATHY
REMEDIAL MASSAGE

www.aquafirehealing.com
Ph: 0415 530 276



**WINCHELSEA
LIONS CLUB**

**PAPER
RECYCLING**

Paper depot rear of
Senior Citizens Rooms
Harding Street
**NEWSPAPERS,
MAGAZINES,
PHONE BOOKS WANTED**

**RAISING FUNDS FOR
OUR TOWN & DISTRICT**
5267 2011 or 0408 520 606

**NATURAL GAS
CONNECTIONS**

**M. & L DRAYTON
PLUMBING SERVICES**

YOUR LOCAL LICENSED

- PLUMBERS (24356)
- GAS FITTERS
- GAS CONVERTERS
- CARBON MONOXIDE TESTING

MARK 0428 520 142

**Winchelsea
Community Market**

Shire Hall
9am - 1pm

MARKET dates for 2023

1 st January	2 nd July
5 th February	6 th August
5 th March	3 rd September
2 nd April	8 th October
7 th May	5 th November
4 th June	3 rd December

Pixie Wash

Mobile Doggie Care
Dogs up to 20kg

Pixie Heath

0417 586 080

Do you need Residential Aged Care?

Estia Health in Bannockburn, Grovedale and Leopold has current vacancies for both respite and permanent care.

To look any of our lovely homes or for any further questions please call Gabrielle on **0419 336 841**.

Bannockburn, Grovedale and Leopold.

Estia Health

GREAT Bundle Deal on Bosch Hot Water... FROM ELGAS

Buy any Bosch Bluetooth continuous flow hot water model - 16Litre, 20Litre or 26Litre and **Receive \$100* in Elgas bonus LPG gas credits**

From **\$780** or \$52.50 per month

AND... for new customers, an additional \$80 WORTH OF LPG GAS CREDITS when you open a new LPG Gas account with Elgas**

NO CONTRACT TO SIGN

Ask about the Elgas Easy Payment Plan - 12 months interest free*** on selected LPG appliances

Automatic tanker gas bottle refill OR gas bottle exchange refill is available for home or business....

Call today or visit our website for our many customer benefits and latest offers

131 161
www.elgas.com.au

ELGAS

Winchelsea AUTO SERVICES
One Stop auto Shop

- ❑ LOG BOOK SERVICE
- ❑ AUTO ELECTRICAL
- ❑ TOWING
- ❑ AIR CONDITIONING
- ❑ CLUTCH & BRAKES
- ❑ TYRES
- ❑ WHEEL ALIGNMENT
- ❑ BATTERIES

CAR, TRUCK REPAIRS & Roadworthys

PH: 5267 3001

Mob: 0417 137 457

17 Alsop Drive





Chiropractic - Remedial Massage - Myotherapy - Sound Healing - Breathwork



Chiropractic care for:

Stress & Anxiety	Pain Management
Body Aches & Tension	Family Wellbeing
Poor Sleep	Health Longevity

03 5267 2240 Shop 4/21 Hesse St Winchelsea   <https://onebodychiropractic.com.au/>




Located at 36 Main Street, Winchelsea 3241

For any enquires or bookings please contact the clinic on 5292 8028.
Or visit our website: www.winchmc.com.au

Opening Hours:
Monday - Friday 8:00am - 5.00pm
(Monday Evening Clinics available and selected Saturdays)




Our clinic accepts online bookings via the app called HotDoc. Download the app on the App Store or Google Play or head to our website.



Porronggitj Karrong and Aqueduct heritage: we want to hear from you!

We are working to improve the safety of the heritage-listed Ovoid Sewer Aqueduct in Breakwater, Geelong, and open up community access to the Barwon River and 66 hectares of surrounding land.

This will create a new cultural, recreational and community precinct in partnership with Wadawurrung Traditional Owners Aboriginal Corporation.

Do you have a memory, photo or other information to share about the aqueduct, or the nearby area? Or perhaps you have questions about the history, construction or cultural heritage of the aqueduct?

If so, please complete a short survey. The survey is also collecting information for the Healthy Country Plan, led by Wadawurrung Traditional Owners. Read more about Porronggitj Karrong and the Aqueduct on our website.



Moriac Veterinary Clinic
0447 781 089
PHONE 24 HOURS
784 Hendy Main Road Moriac
info@moriacvet.com
www.moriacvetclinic.com.au
HOURS // Monday - Friday: 8am - 5pm






REGISTERED Building Practitioner

- NEW HOMES
- ALTERATIONS
- GARPORTS
- BATHROOMS
- EXTENSIONS
- DECKS
- VERANDAHS
- WINDOW REPLACEMENTS
- RENOVATIONS
- PERGOLAS
- RE-GLADS

LEIGH LUPTON 0438 840 104 | CHRIS LUPTON 0407 681 514

LEIGHLUPTON17@GMAIL.COM Est. 1977



RONNIE.
Winchelsea's pet groomer.
For appointments
0436 008 989
tangopetgrooming@gmail.com



All your caulking & waterproofing needs
 • Bathrooms (files, mirrors, vanities, bathtubs, shower)
 • Kitchens • Flooring (skirtings, tiles, floorboards)
 • Splash Backs • Pool Joints • Brick Work
 • Expansion Joints
 Phone/Text/Email: luke@westcoastsealants.com

WEST COAST SEALANTS

LUKE BATH
 CAULKING CONTRACTOR

0406 845 098
 westcoastsealants.com
 PROVIDING QUALITY WORK SINCE 1995

SHEOAK CONSTRUCTIONS

Staircases | Feature Trusses | Tiling
 New Homes | Extensions | Renovations

Call Adam on 0412 234 306

@sheoak_constructions
 Sheoak Constructions

R.A.K. DAVIS & SONS

CARTAGE CONTRACTORS

WINCHELSEA

SUPPLIER OF ALL QUARRY MATERIALS, TRUCK HIRE
 CARTAGE OF GRAIN, LIME, GYPSUM & SUPER
LANDSCAPE & GARDEN SUPPLIES

56 WILLIS ST, WINCHELSEA
 Ph – 5267 2094
 Ryan – 0438 672 281
 Email: rakdavis@bigpond.com

SIMPLE STORAGE SOLUTIONS

- Personal & Business Storage
- Boat, Caravan & Vehicle Storage
- High Security Premises
- Individually Alarmed Units
- Electric Gate Access
- 7 Day Access & CCTV

YOUR STORAGE PROBLEMS SOLVED

5267 3116
 6 ALSOP DRIVE, WINCHELSEA 3241

HESSE RURAL HEALTH

Volunteers Required

- Bus Driver & Outings Assistant
- Resident Visitor
- Events and Activities Assistant
- Group Wheelchair Walks Assistant
- Appointments Escort
- Social Support Activities
- Gardening - Winchelsea

Volunteers are essential to our aged care system, supporting the wellbeing of older people in their homes and in residential settings

For more information please contact Jessica Culhane, Communications and Community Partnership Officer via phone on **03) 5267 1200** or via email jculhane@hesse.vic.gov.au

Funeral Planning
Working out what is best for you.
 Prepaid Funerals, Funeral Bonds, Pay-by instalments...

There are many options and its important to make the right choice.

Alyson Burchell will be available by appointment to answer any questions about funerals and planning ahead.

For more information or to make an appointment contact Sue on 5221 4788

Tuckers Community Office,
 Surf Coast Taxation Services, 22 Willis Street,
 Winchelsea

**First Tuesday of the Month,
 by appointment 10.00am - 12.00pm**

Caring for families since 1883

Tuckers
 Funeral & Bereavement Services
 ...for a life worth celebrating

5221 4788
www.tuckers.com.au




YOU'RE INVITED

Happy 20th Birthday Community Bank Surfcoast

To show our appreciation, we are celebrating our 20th birthday by seeking to fulfil the 'wish-lists' of our local not-for-profit groups and organisations by providing an extra \$200,000 back to our community.

When Wednesday 1 February - Sunday 30 April

Contact us via Facebook, in Branch, a Director, or our Community Engagement Advisor - Kelly 0459 997 102

B Bendigo Bank

Bendigo and Adelaide Bank Limited ABN 11 068 049 178, AFSL/Australian Credit Licence 237879 OUT_28055147, 20/02/2023

M & L DRAYTON PLUMBING SERVICES

REG No 24356 C/A No C02594

- Domestic and Rural Plumbing
- Roofing
- Sewerage & Septic
- LPG & Natural Gas Connections
- Motorised Drain Cleaning
- Backhoe Hire

Phone Mark 5288 7244
PO BOX 98 WINCHELSEA 3241
Mobile 0428 520 142

Commercial | Industrial | Domestic

HAMILTONS

Truck & Bobcat Hire
Give Aaron a Call
0438 438 623



5234 6585 0417 385 984
*For all your septic tank, grease traps
and interceptor pits servicing.
Locally owned and operated*

Winchelsea Taxis is now Surfcoast Taxis

Our fleet of vehicles are growing to all late models and we are covering an extended area including Winchelsea, Colac, Bannockburn, Inverleigh, Great Ocean Road and Geelong.
We have a fleet of 10 seater Maxi Vans, all with capacity to carry wheelchairs.

Surfcoast Taxis Pty Ltd
All Bookings: 0408 325 992
Fax: 5267 2699
Email: bannotaxis@gmail.com
 (Admin or Stan 0429 672 888)
 66A Batson Street
 Winchelsea 3241





Accounts NDIS provider. TAC, DVA etc
 NDIS provider number 4050001044
 NDIS provider number 4050001048

Wightons Lawyers

Dispute Resolution & Litigation
 Debt Collection
 Property Law
 Wills & Estates
 Powers of Attorney
 Business Law
 Family Law
 By appointment only

22 Willis Street, Winchelsea
 ph. 5221 8777
www.wightons.com.au



Winchelsea Towing
24 Hour Accident and Breakdown Towing
0418 535 402



ISSN 2202-6851



HF RICHARDSON

PROPERTY

Servicing all your real estate needs

Ken McDonald **0418 524 150**



Residential | Rural Lifestyle | Agricultural Farms



Charles Stewart & Company are leading livestock and real estate service providers covering Victoria's south west

	LIVESTOCK
Jamie McConachy	0418 522879
Peter McConachy	0408 522878
Matt Nelson	0428 315400
Gerard Bohan	0400 005541
Lachie Barclay	0438 346291
John Thornton	0408 526367
Dougal McIntyre	0439 575612
Ross Spitty	0419 539717



	REAL ESTATE
Michael Stewart	0418 520467
Daryl Osborne	0419 388341
Anthony McDonald	0418 593597
Gerard Bohan	0400 005541
Stephen Lugg	0417 556098
Josh Lamanna	0417 586032



Office
 56 Bromfield Street, Colac
www.charlesstewart.com.au

Green Lead Electrical
 Connecting you to a greener future
REC 23618

0467 097 101



Servicing Geelong & the Surf Coast

Specialising in all residential electrical work including:

- Switch board & lighting upgrades
- Outdoor lighting
- Electrical safety checks
- Energy efficient LED lighting
- Ceiling sweep fans & ventilation
- Energy saving advice

Phone **Martin Wilkinson:**
0467 097 101

greenlead@outlook.com

132268-CG18-14

MGT BUILDING & CONSTRUCTION

NEW HOMES | EXTENSIONS | RENOVATIONS

Ph: 0409 433 687

