

1231 YONGE STREET UNIT 214
SUMMERHILL





SOPHISTICATED SUMMERHILL LIVING AT THE ORION

Welcome to The Orion – a rare opportunity at one of Toronto’s most coveted boutique addresses.

Located in the heart of Summerhill, this bright, thoughtfully-designed one-bedroom suite offers heightened ceilings, quiet east-facing views, and an effortless flow to a charming 240-square-foot enclosed terrace – your own private outdoor retreat.

The kitchen is equipped with top-of-the-line stainless steel appliances (2023), with a nearby ensuite laundry featuring premium Bosch appliances.

The spacious bedroom fits a king-sized bed comfortably, overlooking the terrace for complete privacy. A modern 4-piece bathroom completes the layout.

Units in this building are rarely available. The Orion sees very limited turnover, with no properties available for sale in over two years. Whether you're looking for a pied-à-terre or a full-time home, this is a rare opportunity to own in a true Toronto gem in the coveted Summerhill neighbourhood.









ABOUT THE NEIGHBOURHOOD

Situated in the heart of the city, Summerhill is a cherished enclave of century homes, canopied streets and charming city life.

An array of well-loved shops and restaurants along the Yonge Street strip make this location second-to-none.

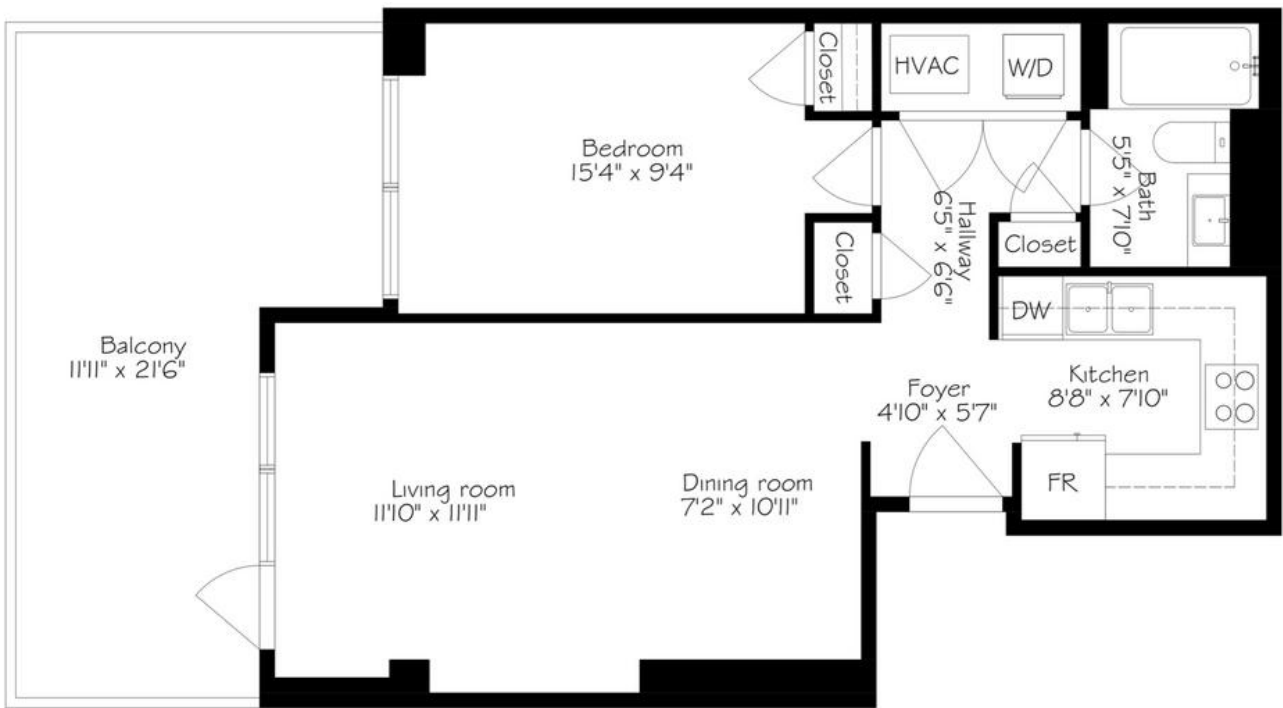
Green spaces abound in this neighbourhood with easy access to a network of ravine trails and parkland.

All within walking distance to local public transit. Minutes to Yorkville or to Yonge and St. Clair, this chic neighbourhood offers an abundance of opportunity for city strolls, all from your doorstep.



1231 YONGE STREET UNIT 214

FLOOR PLANS



TAXES

- \$2,582 (2024)

SQUARE FOOTAGE

- 559 Square Feet

HEATING

- Forced Air Gas

COOLING

- Central Air Conditioning

STORAGE

- One Storage Locker (Owned)

PARKING

- One Underground Parking Spot (Owned)

EXCLUSIONS

- None

INCLUSIONS

- All Stainless Steel kitchen appliances
 - Double LG Fridge
 - LG Stove/Range
 - Bosch Dishwasher
- All Laundry Appliances:
 - Bosch Washer and Dryer
- All Electric Light Fixtures



ELEVATE YOUR EXPECTATIONS



Megan Till-Landry
Real Estate Agent
416.886.2491
megan@heapsestrin.com



HEAPS ESTRIN

REAL ESTATE TEAM

For Royal LePage Real Estate Services Heaps Estrin Team, Brokerage. All information and statements contained herein, provided by Royal LePage Real Estate Services Heaps Estrin Team, Brokerage regarding property for sale, rental or financing is from sources deemed reliable and assumed correct, but no warranty or representation is made as to the accuracy thereof and same is submitted subject to errors, omissions, changes in price, rental or other conditions, prior sale or withdrawal without notice.

Royal LePage Real Estate Services Heaps Estrin Team, Brokerage Independently Owned and Operated