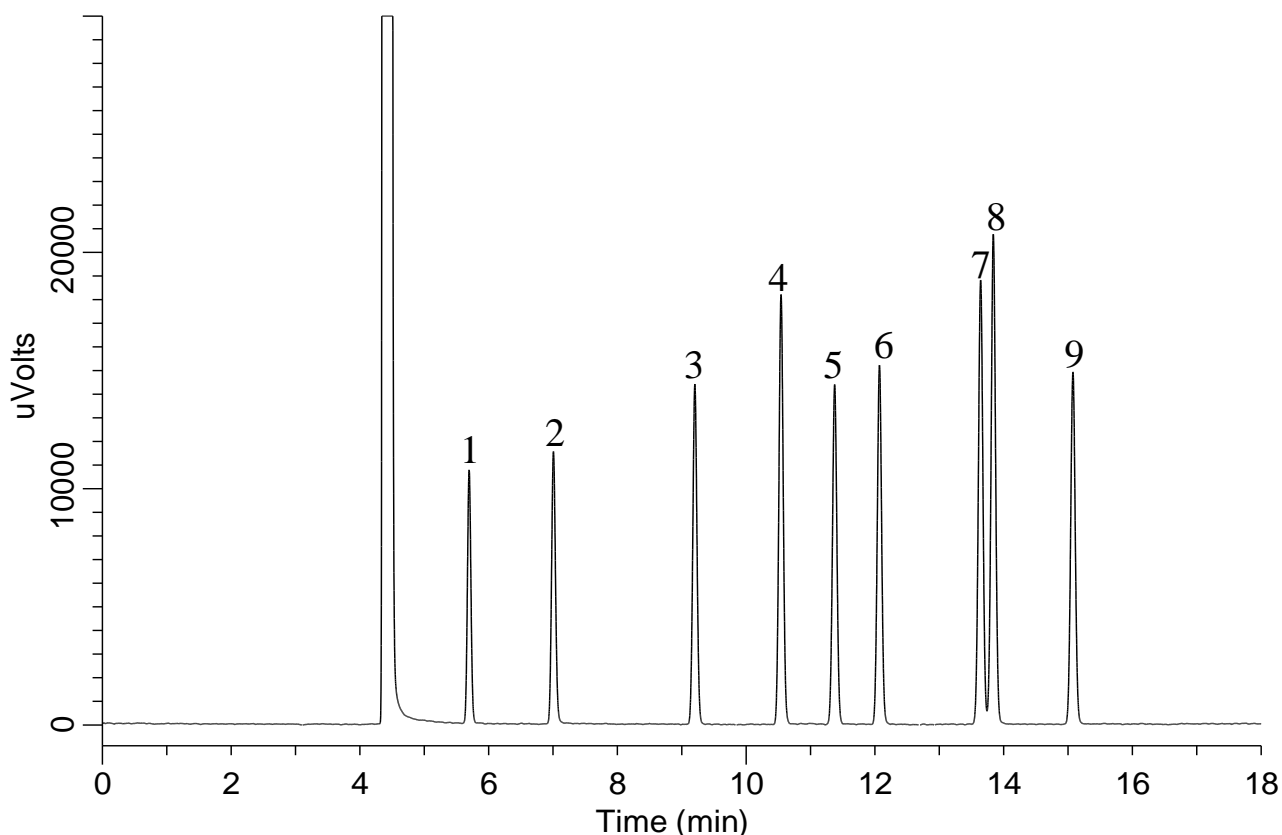


InertSearch™ for GC

InertCap® Applications

Flavor by Japanese Standards of Food Additives

Data No. GA296-0984



Conditions

System : GC-FID
Column : InertCap 1
0.25 mm I.D. × 30 m df = 1.00 µm
Col.Cat. No. : 1010-11145
Col. Temp. : 50 °C(5 min hold) - 5 °C/min - 230 °C
Carrier Gas : He 50 kPa
Injection : Split flow 65 mL/min
250 °C
Detection : FID Auto Range
250 °C
Sample Size : 1000 µg/mL in Methanol
1 µL

Analyte

1. 2-Propanol
(Isopropanol)
2. 1-Propanol
3. 2-Methyl-1-propanol
(Isobutanol)
4. 1-Butanol
5. 3-Methyl-2-butanol
6. 2-Pentanol
7. 3-Methyl-1-butanol
(Isoamyl alcohol)
8. 2-Methyl-1-butanol
(2-Methylbutyl alcohol)
9. 1-Pentanol
(Amyl alcohol)