

The background of the cover is a composite image. The top half shows a histological section of tissue, likely stained with hematoxylin and eosin (H&E), showing cellular structures and nuclei. The bottom half shows a close-up of a microscope's objective lens, with a gloved hand visible on the right side, suggesting a laboratory setting. The text 'HISTOLOGY' is in large, bold, blue letters, and 'CATALOG' is in smaller, bold, black letters.

HISTOLOGY

CATALOG

Volume 5



Azer Scientific

As an industry leader, **Azer Scientific** strives to offer top quality products at an exceptional value. We provide technical specifications, operating instructions, and complete descriptions to assist you in your buying decisions.

With over 30 years of laboratory expertise, our team is extremely knowledgeable, highly motivated, and well qualified to assist you. Our experience allows you to use us as a resource to identify and purchase the appropriate products for your application. Our professional staff is available to make your Azer buying experience convenient, efficient, and enjoyable.

If you do not see what you need in this catalog, please reach out to us. We specialize in developing new and innovative products, and our product line is continually growing to meet your needs.

Our mission is to consistently supply our customers with cost-effective, quality-engineered products, with exceptional customer service, and proven reliability. We value your business.



Azer Scientific is an
ISO 13485:2016
Certified Company

| | |
|---|-----------|
| SPECIMEN COLLECTION | 3 |
| GROSSING | 7 |
| CASSETTES | 10 |
| FIXATION & PROCESSING | 15 |
| EMBEDDING | 18 |
| MICROTOMY | 19 |
| MICROSCOPE SLIDES & COVERSIPPING | 21 |
| STAINING | 24 |
| CYTOLOGY | 38 |
| ARCHIVING & STORAGE | 41 |
| SAFETY & CLEANUP | 44 |
| WORKSTATIONS & TABLES | 47 |



Prefilled Formalin Containers

Azer Scientific's prefilled formalin containers are half-filled with a traditional 10% neutral buffered formalin fixative, used in histological applications for fixation and storage of tissue specimens. Our line of prefilled containers are specifically designed for safe collection and transport of various sized tissue specimens.

Private labeling for large volume customers is available.

- Polypropylene containers with polyethylene screw caps
- Smaller containers (20 mL-120 mL) are 95 kPa compliant
- Inner packaging allows for easy breakdown of the cases for distribution to other labs and doctors offices
- Inner packaging made of chipboard material, safe for operating room use

Formalock™

Smaller sized prefilled formalin containers feature Formalock™ closures.

- Two audible "clicks" to assure the user that the seal is fully engaged
- Eliminates annoyance and hazard of leaking prefills
- Ensures safe transport of specimen



| Cat. No. | Description | UOM |
|------------|---|------------------------------|
| PFNBF-07 | Prefilled Formalin Container, 7 mL (5 mL filled) | 100/tray, 5 trays/case (500) |
| PFNBF-20 | Prefilled Formalin Container, Formalock™, 20 mL (1/2 filled) | 32/pack, 4 packs/case (128) |
| B-PFNBF-20 | Prefilled Formalin Container, Formalock™, 20 mL (1/2 filled), bulk | 32/pack, 24 packs/case (768) |
| PFNBF-40 | Prefilled Formalin Container, Formalock™, 40 mL (1/2 filled) | 24/pack, 2 packs/case (48) |
| B-PFNBF-40 | Prefilled Formalin Container, Formalock™, 40 mL (1/2 filled), bulk | 24/pack, 20 packs/case (480) |
| PFNBF-60 | Prefilled Formalin Container, Formalock™, 60 mL (1/2 filled) | 27/pack, 2 packs/case (54) |
| B-PFNBF-60 | Prefilled Formalin Container, Formalock™, 60 mL (1/2 filled), bulk | 27/pack, 12 packs/case (324) |
| PFNBF-90 | Prefilled Formalin Container, Formalock™, 90 mL (1/2 filled) | 12/pack, 4 packs/case (48) |
| B-PFNBF-90 | Prefilled Formalin Container, Formalock™, 90 mL (1/2 filled), bulk | 12/pack, 20 packs/case (240) |
| PFNBF-120 | Prefilled Formalin Container, Formalock™, 120 mL (1/2 filled) | 24/pack, 2 packs/case (48) |
| B-PFNBF120 | Prefilled Formalin Container, Formalock™, 120 mL (1/2 filled), bulk | 24/pack, 8 packs/case (192) |

Large Prefilled Formalin Containers

Our large prefilled formalin containers are designed for collection of large tissue specimens. Each container is half-filled with 10% neutral buffered formalin. Our 180 mL-1000 mL containers feature a heat seal to prevent leakage during shipping.

| Cat. No. | Description | UOM |
|-------------|--|---------|
| PFNBF-180 | Prefilled Formalin Container, 180 mL (1/2 filled) | 50/case |
| PFNBF-240 | Prefilled Formalin Container, 240 mL (1/2 filled) | 24/case |
| PFNBF-480 | Prefilled Formalin Container, 480 mL (1/2 filled) | 24/case |
| PFNBF-1000 | Prefilled Formalin Container, 1000 mL (1/2 filled) | 12/case |
| PFNBF-0.6G | Prefilled Formalin Container, 0.6 gallon (1/2 filled) | Each |
| PFNBF-1.25G | Prefilled Formalin Container, 1.25 gallon (1/2 filled) | Each |
| PFNBF-3840 | Prefilled Formalin Container, 3840 mL paint can (1/2 filled) | 4/case |



Prostate Biopsy Kits

- Packaged ready-to-use with eight, twelve, or sixteen 20 mL Formalock™ containers
- Each container is half-filled with 10% neutral buffered formalin
- Each kit contains an insert pre-labeled with the appropriate section of the prostate

| Cat. No. | Description | UOM |
|----------|-------------------------------|--------------|
| 10-831 | Prostate Biopsy Kit, 8 place | 25 kits/case |
| 10-820 | Prostate Biopsy Kit, 12 place | 25 kits/case |
| 10-816 | Prostate Biopsy Kit, 16 place | 25 kits/case |



Ask about our custom labeling
and kitting options!

Prefilled Alcohol

Prefilled reagent grade alcohol in varied concentration and fill volumes offer flexibility for the collection and transport of cytology specimens. Our 120 mL container is prefilled with 100 mL 95% reagent alcohol, ideal for FNA or other small volume collections. The 90 mL collection container is supplied with 50 mL of 50% reagent alcohol.

| Cat. No. | Description | UOM |
|----------|--|---------|
| ES787 | 95% Reagent Grade Alcohol, 120 mL prefill, green cap | 48/case |
| ES788 | 50% Reagent Grade Alcohol, 90 mL prefill, yellow cap | 48/case |
| ES788W | 50% Reagent Grade Alcohol, 90 mL prefill, white cap | 48/case |

Prefilled Zinc Formalin

Our zinc formalin promotes excellent H&E staining and enhances immunochemistry results.

- Ideal for all tissue types
- Enhances nuclear and cytoplasmic fixation
- Non-coagulant quality of formalin
- Coagulant fixative quality provided by zinc

| Cat. No. | Description | UOM |
|------------|------------------------------------|----------|
| PFZF-020 | Zinc Formalin, 20 mL prefill | 128/case |
| B-PFZF-020 | Zinc Formalin, 20 mL prefill, bulk | 768/case |
| PFZF-040 | Zinc Formalin, 40 mL prefill | 48/case |
| PFZF-060 | Zinc Formalin, 60 mL prefill | 54/case |
| PFZF-090 | Zinc Formalin, 90 mL prefill | 48/case |
| PFZF-120 | Zinc Formalin, 120 mL prefill | 48/case |
| PFZF-180 | Zinc Formalin, 180 mL prefill | 50/case |

Prefilled EasyFix™ Alcoholic Formalin

Our alcoholic formalin is designed for tissues that may be more difficult to fix, such as fatty tissues, breast, and colon.

| Cat. No. | Description | UOM |
|----------|--|----------|
| PFAF-20 | EasyFix™ Alcoholic Formalin, 20 mL prefill | 128/case |
| PFAF-40 | EasyFix™ Alcoholic Formalin, 40 mL prefill | 48/case |



Prefilled Bouin's Fixative

This solution is a saturated picric acid solution that is useful for preserving delicate tissues and gastrointestinal tract specimens.

| Cat. No. | Description | UOM |
|----------|----------------------------------|----------|
| PFB-020 | Bouin's Fixative, 20 mL prefill | 128/case |
| PFB-040 | Bouin's Fixative, 40 mL prefill | 48/case |
| PFB-060 | Bouin's Fixative, 60 mL prefill | 54/case |
| PFB-090 | Bouin's Fixative, 90 mL prefill | 48/case |
| PFB-120 | Bouin's Fixative, 120 mL prefill | 48/case |



Prefilled Hollande's Fixative

Recommended for gastrointestinal tract specimens and fixation of endocrine tissues. Hollande's fixative will produce less lysis than Bouin's and has some decalcifying properties.

| Cat. No. | Description | UOM |
|-----------|--|----------|
| PFHF-20 | Hollande's Fixative, 20 mL prefill | 128/case |
| B-PFHF-60 | Hollande's Fixative, 60 mL prefill, bulk | 324/case |

Prefilled Michel's Transport Medium

Michel's Transport Medium is prepared for the transport of fresh, unfixed tissues submitted for frozen sectioning and immunofluorescent testing.

| Cat. No. | Description | UOM |
|----------|--|----------|
| ES3270 | Michel's Transport Medium, 20 mL prefill | 128/case |

Customization Options

Don't see what you are looking for here? We are able to customize your prefilled containers with your choice of fixative, container size, and label. Contact us to learn more!

Empty Formalock™ Containers

Our empty Formalock™ containers are available in sizes ranging from 20 mL to 120 mL.

- Polypropylene containers with polyethylene screw caps
- Containers are 95 kPa compliant and safe for pneumatic tube systems
- Our 20 mL - 120 mL containers feature our Formalock™ closure; two clicks ensure the seal is fully engaged for safe collection and transport of specimen

| Cat. No. | Description | UOM |
|--------------|------------------------------------|----------|
| PFNBF-20EML | Empty Formalock™ Container, 20 mL | 200/case |
| PFNBF-40EML | Empty Formalock™ Container, 40 mL | 200/case |
| PFNBF-60EML | Empty Formalock™ Container, 60 mL | 200/case |
| PFNBF-90EML | Empty Formalock™ Container, 90 mL | 200/case |
| PFNBF-120EML | Empty Formalock™ Container, 120 mL | 200/case |



Snap Top Pathology Containers

- Manufactured from translucent, high-density polyethylene and natural polypropylene
- Sturdy, light-weight, and shatter resistant
- Excellent resistance to histology fixatives
- Snap-on lid creates a secure seal



| Cat. No. | Description | UOM |
|----------|---|----------|
| ES3700 | Snap Top Pathology Container, 4 oz., HDPE | 250/case |
| ES3701 | Snap Top Pathology Container, 8 oz., PP | 250/case |
| ES3702 | Snap Top Pathology Container, 16 oz., HDPE | 100/case |
| ES3703 | Snap Top Pathology Container, 32 oz., HDPE | 100/case |
| ES3704 | Snap Top Pathology Container, 64 oz., HDPE | 50/case |
| ES3705 | Snap Top Pathology Container, 85 oz., PP | 25/case |
| ES3706 | Snap top pathology container, 165 oz., HDPE | 25/case |

Screw Top Pathology Containers

- Manufactured from high-quality, clarified polypropylene
- Screw top lid provides a leak-resistant closure to help protect specimen and increase safety of lab personnel
- Excellent resistance to histology reagents



| Cat. No. | Description | Height | Diameter | UOM |
|----------|---------------------------------------|--------|----------|---------|
| ES60120 | Screw Top Pathology Container, 4 oz. | 2.25" | 2.625" | 50/case |
| ES60180 | Screw Top Pathology Container, 6 oz. | 2.75" | 2.625" | 50/case |
| ES60240 | Screw Top Pathology Container, 8 oz. | 3.375" | 2.625" | 24/case |
| ES60360 | Screw Top Pathology Container, 12 oz. | 3.0" | 3.375" | 24/case |
| ES60480 | Screw Top Pathology Container, 16 oz. | 4.0" | 3.375" | 24/case |
| ES61000 | Screw Top Pathology Container, 32 oz. | 3.75" | 4.5" | 12/case |

Large Screw Top Pathology Containers

- Manufactured from high-quality, high-density polyethylene
- Includes heavy-duty screw cap lid
- Moisture and tamper resistant
- Each container has a securely attached handle for carrying



| Cat. No. | Description | UOM |
|----------|--|---------|
| MM100 | Large Screw Top Pathology Container, 0.6 gallon | 12/case |
| MM200 | Large Screw Top Pathology Container, 1.25 gallon | 12/case |
| MM350 | Large Screw Top Pathology Container, 3.5 gallon | 4/case |
| MM500 | Large Screw Top Pathology Container, 5 gallon | 4/case |

Biohazard Bags

- 3 wall reclosable biohazard transport bags
- Feature separate sections for specimen and for paperwork



| Cat. No. | Description | UOM |
|-----------|---|-----------|
| ESB6X9 | Biohazard bag, 6" x 9" | 1000/case |
| ESB6X9-AP | Biohazard bag, 6" x 9" with 3" x 5" absorbent pad | 1000/case |
| ESB8X10 | Biohazard bag, 8" x 10" | 1000/case |
| ESB12X15 | Biohazard bag, 12" x 15" | 1000/case |

Customize biohazard bags with your lab's logo and contact information!

Contact your sales representative for more details.



FormaPad™

Azer Scientific's FormaPad™ is designed for formalin absorption while grossing.

- Provides an excellent grossing surface
- Specially designed to prevent dulling of blades
- Pads absorb formalin and glutaraldehyde, as well as neutralize the hazardous vapors



| Cat. No. | Description | UOM |
|----------|----------------------|----------|
| ES86672 | FormaPad™, 8" x 11" | 100/case |
| ES86673 | FormaPad™, 11" x 15" | 100/case |

Formalin Absorbent Pads

Azer Scientific's formalin absorbent pads are specially treated for the destruction of formaldehyde, 10% Neutral Buffered Formalin, and glutaraldehyde solutions. The pads also work to eliminate any chemically hazardous vapors. Available in sheet (roll) or pad styles.



| Cat. No. | Description | UOM |
|----------|---|--------------|
| ES728 | Blue Sheet Pad, 11" x 10", 55 sheets per roll | 6 rolls/case |
| ES729 | White Pad, 6" x 14" | 48/case |
| ES730 | White Pad, 9" x 21" | 30/case |

Gauze

Our gauze is 8 ply, 4" x 4" pieces.

Packaging: 200/pack, 20 packs/case

| Cat. No. | Description | UOM |
|----------|-----------------------|-----------|
| ES8P44 | Gauze, 8 ply, 4" x 4" | 4000/case |



FormaPad™ Select

Azer Scientific's FormaPad™ Select is designed for formalin absorption while grossing.

- Provides an excellent grossing surface
- Permeable, non-woven blue laminate material to use as a work surface
- Provides a dark contrast background for smaller biopsy specimens
- Pads absorb formalin and glutaraldehyde, as well as neutralize the hazardous vapors



| Cat. No. | Description | UOM |
|----------|-----------------------------|----------|
| ES86675 | FormaPad™ Select, 8" x 11" | 100/case |
| ES86676 | FormaPad™ Select, 11" x 15" | 100/case |

Azer Lab Wipes

- Low lint, heavy-duty, air-layered material
- For use as an absorbent work surface for cover slipping or general lab clean up
- Each wipe measures 12.5" x 13"
- 1/4 fold packaged in packs of 50



| Cat. No. | Description | UOM |
|----------|----------------|----------|
| ES3900 | Azer Lab Wipes | 900/case |

Forceps

Stainless steel forceps: 4 1/2" or 5 1/2" length, with straight or curved tip

Plastic forceps: 5" length, with serrated tip



| Cat. No. | Description | UOM |
|----------|--|----------|
| ES3162 | Stainless Steel Forceps, 4 1/2", straight tip | Each |
| ES4470 | Stainless Steel Forceps, 4 1/2", curved serrated tip | Each |
| ES3161 | Plastic Forceps, 5", blue, serrated tip | 500/case |
| ES4471 | Stainless Steel Forceps, 5 1/2", straight serrated tip | Each |

Pathology Grossing Boards

Features printed measurement guides printed onto board

- Made of heavy-duty, stain-resistant, thick polyethylene
- Will not dull fine surgical blades
- Features a drain groove to contain fluids



| Cat. No. | Description | UOM |
|----------|---------------------------|------|
| ES3913 | Grossing Board, 13" x 11" | Each |
| ES3917 | Grossing Board, 23" x 16" | Each |

Disposable Cutting Boards

- Printed with imperial and metric scales (in, cm, mm)
- Features seven dimensional circles
- Surface will not dull blades
- Made from a flexible copolymer resin
- Common oils, solvents and water will not effect performance of board at normal temperatures



| Cat. No. | Description | UOM |
|----------|------------------------------------|---------|
| ES32496 | Disposable Cutting Board, 6 x 8" | 96/case |
| ES32497 | Disposable Cutting Board, 9 x 12" | 48/case |
| ES32498 | Disposable Cutting Board, 12 x 19" | 24/case |

Disposable Scalpels

Our disposable scalpels are manufactured with a high carbon steel blade and plastic handle. Individually wrapped and sterilized with gamma radiation.



| Cat. No. | Description | UOM |
|----------|------------------------------|-----------------------|
| ES3244 | Disposable Scalpel, size #10 | 10/box, 50 boxes/case |
| ES3245 | Disposable Scalpel, size #11 | 10/box, 50 boxes/case |
| ES3246 | Disposable Scalpel, size #15 | 10/box, 50 boxes/case |
| ES3247 | Disposable Scalpel, size #20 | 10/box, 50 boxes/case |
| ES3248 | Disposable Scalpel, size #22 | 10/box, 50 boxes/case |

Tissue Marking Dyes

Azer Scientific's tissue marking dye is the ideal choice for marking margins, processing multiple sections, and marking areas of interest on tissue samples.

- Tissue marking dye kit include 2 oz. bottles of each color dye, a base, and applicator sticks
- Available individually in 2 oz. and 8 oz. bottles
- **Colors:** black, blue, green, orange, red, violet, yellow

| Color | 2 oz. | 8 oz. | UOM |
|--------|-----------|-----------|------|
| Black | ESTMD-2BK | ESTMD-8BK | Each |
| Blue | ESTMD-2B | ESTMD-8B | Each |
| Green | ESTMD-2GN | ESTMD-8GN | Each |
| Orange | ESTMD-2O | ESTMD-8O | Each |
| Red | ESTMD-2R | ESTMD-8R | Each |
| Violet | ESTMD-2V | ESTMD-8V | Each |
| Yellow | ESTMD-2Y | ESTMD-8Y | Each |

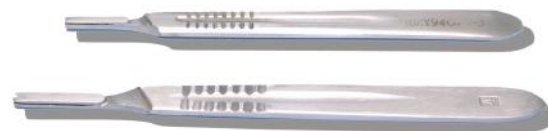
Tissue Marking Kit



| Cat. No. | Description | UOM |
|------------|-----------------------------|----------|
| ESTMD-K | Tissue Marking Dye Kit | Each |
| ESTMD-BASE | Base for 2 oz. Marking Dyes | Each |
| ESTMD-STK | Applicator Sticks | 100/pack |

Scalpel Handles

- Made from stainless steel
- Will accept #10-12, #15, and #20-25 scalpel blades



| Cat. No. | Description | UOM |
|----------|--------------------------------------|------|
| ES3242 | #3 Handle, accepts blades #10-12, 15 | Each |
| ES3243 | #4 Handle, accepts blades #20-25 | Each |



Scalpel Blades

- Made from high carbon steel
- Individually foil wrapped and sterilized by gamma radiation (Exception: ESBL0207)

| Cat. No. | Description | UOM |
|----------|-------------------------|------------------------|
| ES3232 | Scalpel Blade, size #10 | 100/box, 50 boxes/case |
| ES3233 | Scalpel Blade, size #11 | 100/box, 50 boxes/case |
| ES3234 | Scalpel Blade, size #12 | 100/box, 50 boxes/case |
| ES3235 | Scalpel Blade, size #15 | 100/box, 50 boxes/case |
| ES3236 | Scalpel Blade, size #20 | 100/box, 50 boxes/case |
| ES3237 | Scalpel Blade, size #21 | 100/box, 50 boxes/case |
| ES3238 | Scalpel Blade, size #22 | 100/box, 50 boxes/case |
| ES3239 | Scalpel Blade, size #23 | 100/box, 50 boxes/case |
| ES3240 | Scalpel Blade, size #24 | 100/box, 50 boxes/case |
| ES3241 | Scalpel Blade, size #25 | 100/box, 50 boxes/case |

| Cat. No. | Description | UOM |
|----------|-------------------------------------|---------|
| ESBL0207 | Scalpel Blade size #70, non-sterile | 100/box |

Scalpel Blade Remover

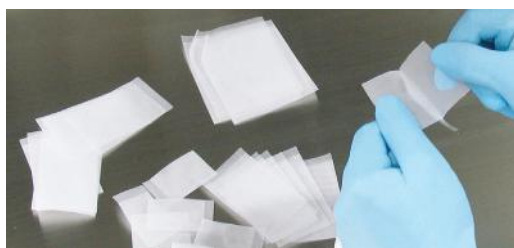
- The scalpel blade remover is simple to use with a quick, single-handed "push, click, and pull" action to remove and contain used scalpel blades
- Holds up to 100 blades
- Compatible with blades up to #25, and #3, 4, 5, 7, and 9 handles



| Cat. No. | Description | UOM |
|----------|--|------|
| ES4482 | Scalpel Blade Remover | Each |
| ES4482-M | Mounting Bracket for Scalpel Blade Remover | Each |

Biopsy Bags

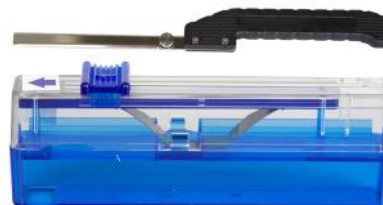
Our nylon and "tea bag" biopsy bags help to reduce the risk of small specimen loss. The design allows for unrestricted fluid movement around tissue and can be opened easily for specimen removal.



| Cat. No. | Description | UOM |
|----------|--------------------------------------|-----------|
| ES3348 | Nylon Biopsy Bag, small, 30 x 50 mm | 1000/case |
| ES3349 | Nylon Biopsy Bag, medium, 45 x 75 mm | 200/case |
| ES3350 | Nylon Biopsy Bag, large, 75 x 95 mm | 500/case |

Trimming Blades and Handle

- Ideal for sectioning hard tissues, mammary gland tissue, soft or semi-fixed organs, and other organs
- Trimming blades are made of stainless steel
- Trimming blades are durable and disposable
- Easy to attach handle



| Cat. No. | Description | UOM |
|----------|---|---------|
| ES32452 | Trimming Blade Handle for 130 mm blades | Each |
| ES32456 | Trimming blade Handle for 260 mm blades | Each |
| ES32451 | Trimming blades, 130 mm | 50/pack |
| ES32455 | Trimming blades, 260 mm | 50/pack |

Valor 2000® Compact Bench Scale

- Stainless steel construction
- Safe to use in the weighing of liquid and in wet environments
- AC adapter and rechargeable battery included
- Maximum Capacity: 30 kg
- Platform Size (LxW): 7.5 in x 9.5 in
- Dimensions (HxLxW): 4.9 in x 10.1 in x 11.3 in



| Cat. No. | Description | UOM |
|----------------|--|------|
| ES59162-XW30KG | Valor® 2000 Compact Bench Scale, 30 kg | Each |

Defender® 3000 Bench Scale

- Ideal for general weighing when working in a damp environment or when it is essential to thoroughly clean the scale
- Made of stainless steel with 4X/IP66 stainless steel indicator with tactile keys, LCD display, and built-in rechargeable battery
- Maximum Capacity: 60 kg
- Platform Size (LxW): 14 in x 12 in
- Dimensions (HxLxW): 22.5 in x 18.6 in x 12 in



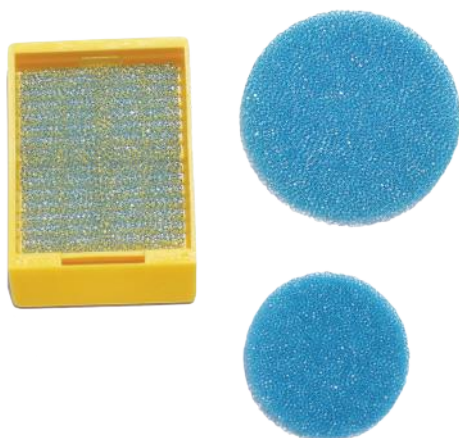
| Cat. No. | Description | UOM |
|----------------|-----------------------------------|------|
| ES59167-VR60KG | Defender® 3000 Bench Scale, 60 kg | Each |

Valor® and Defender® are registered trademarks of OHAUS Corporation.

Biopsy Pads

Used to hold biopsies in place and to prevent the specimen from drifting during processing.

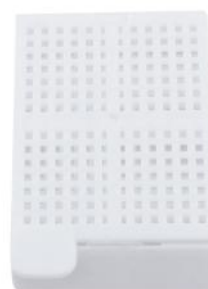
- Made of polyester urethane foam
- Verified for consistency throughout to achieve optimum solvent flow
- Will resist temperatures from -40°C to 121°C



| Cat. No. | Description | UOM |
|------------|---|-------------|
| ES3057 | Biopsy Pad, 30.2 x 25.4 x 2 mm, blue | 10,000/case |
| ES3057-BLK | Biopsy Pad, 30.2 x 25.4 x 2 mm, black | 1000/pack |
| ES3058 | Biopsy Pad (round), 25.4 x 2.7 mm, blue | 10,000/case |
| ES3059 | Biopsy Pad (round), 34.55 x 2 mm, blue | 10,000/case |

Two Piece Economy Cassette (Tissue & Biopsy)

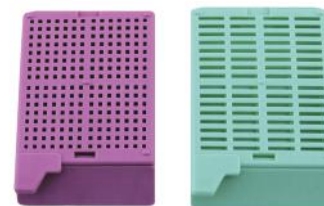
- Molded from a high-density polymer resistant to the chemical actions of solvents
- Lids can be snapped on and off as often as necessary
- Lids relock without danger of specimen loss
- Large labeling areas located on three sides of the cassette



| Cat. No. | Description | UOM |
|----------|------------------------|----------|
| ES3013-W | Tissue Cassette, white | 500/case |
| ES3014-W | Biopsy Cassette, white | 500/case |

One-Piece Cassette (Tissue & Biopsy, Bulk & Taped)

- Molded from a special high-density polymer resistant to histology solvents
- Snap-latch and hinge-lock design prevents early separation of base and lid
- Features a front tab for easy handling of cassette
- Three frosted writing areas; including the anterior surface at a 35° angle
- Available taped in an open position for use in automated systems



| Description | Bulk Cat No. | UOM | Taped Cat No. | UOM | Description | Bulk Cat No. | UOM | Taped Cat No. | UOM |
|-------------------------|--------------|-----------|---------------|-----------|-------------------------|--------------|-----------|---------------|-----------|
| Tissue Cassette, aqua | ES6010-A | 1500/case | ES6012-A | 1000/case | Biopsy Cassette, aqua | ES6011-A | 1500/case | ES6013-A | 1000/case |
| Tissue Cassette, blue | ES6010-B | 1500/case | ES6012-B | 1000/case | Biopsy Cassette, blue | ES6011-B | 1500/case | ES6013-B | 1000/case |
| Tissue Cassette, green | ES6010-G | 1500/case | ES6012-G | 1000/case | Biopsy Cassette, green | ES6011-G | 1500/case | ES6013-G | 1000/case |
| Tissue Cassette, gray | ES6010-GY | 1500/case | ES6012-GY | 1000/case | Biopsy Cassette, gray | ES6011-GY | 1500/case | ES6013-GY | 1000/case |
| Tissue Cassette, lilac | ES6010-L | 1500/case | ES6012-L | 1000/case | Biopsy Cassette, lilac | ES6011-L | 1500/case | ES6013-L | 1000/case |
| Tissue Cassette, orange | ES6010-O | 1500/case | ES6012-O | 1000/case | Biopsy Cassette, orange | ES6011-O | 1500/case | ES6013-O | 1000/case |
| Tissue Cassette, pink | ES6010-P | 1500/case | ES6012-P | 1000/case | Biopsy Cassette, pink | ES6011-P | 1500/case | ES6013-P | 1000/case |
| Tissue Cassette, peach | ES6010-PH | 1500/case | ES6012-PH | 1000/case | Biopsy Cassette, peach | ES6011-PH | 1500/case | ES6013-PH | 1000/case |
| Tissue Cassette, tan | ES6010-T | 1500/case | ES6012-T | 1000/case | Biopsy Cassette, tan | ES6011-T | 1500/case | ES6013-T | 1000/case |
| Tissue Cassette, white | ES6010-W | 1500/case | ES6012-W | 1000/case | Biopsy Cassette, white | ES6011-W | 1500/case | ES6013-W | 1000/case |
| Tissue Cassette, yellow | ES6010-Y | 1500/case | ES6012-Y | 1000/case | Biopsy Cassette, yellow | ES6011-Y | 1500/case | ES6013-Y | 1000/case |

Cassette Color Guide





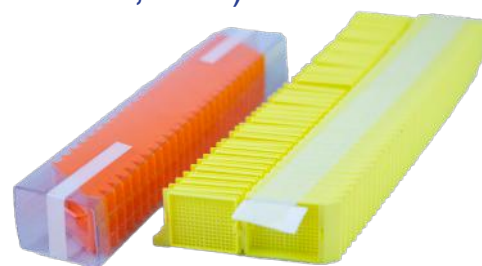
Hinged Tissue, Biopsy, and Mesh Cassettes (Taped, Sleeved, Bulk)

- Molded from a special high-density polymer resistant to histology solvents
- Unique recessed lid allows for more cassettes to be stacked in automated systems and in storage
- Hinged at front of cassette
- Features a back tab for easy handling of cassette
- Three frosted writing surfaces including the anterior surface at a 45° angle

Bulk Cases: 500/box (3 boxes/case), or 250/box (4 boxes/case) for mesh

Taped for Automated Labelers: 40/stack, 50 stacks/case

Sleeve for Automated Labelers: 75/tube, 10 tubes/case



| Description | Bulk Cat No. | Bulk UOM | Taped Cat. No. | Taped UOM | Sleeved Cat. No. | Sleeved UOM |
|-------------------------|--------------|-----------|----------------|-----------|------------------|-------------|
| Tissue Cassette, aqua | ES3336-A | 1500/case | ES6015-A | 2000/case | ES3015-A | 750/case |
| Tissue Cassette, blue | ES3336-B | 1500/case | ES6015-B | 2000/case | ES3015-B | 750/case |
| Tissue Cassette, green | ES3336-G | 1500/case | ES6015-G | 2000/case | ES3015-G | 750/case |
| Tissue Cassette, gray | ES3336-GY | 1500/case | ES6015-GY | 2000/case | ES3015-GY | 750/case |
| Tissue Cassette, lilac | ES3336-L | 1500/case | ES6015-L | 2000/case | ES3015-L | 750/case |
| Tissue Cassette, orange | ES3336-O | 1500/case | ES6015-O | 2000/case | ES3015-O | 750/case |
| Tissue Cassette, pink | ES3336-P | 1500/case | ES6015-P | 2000/case | ES3015-P | 750/case |
| Tissue Cassette, peach | ES3336-PH | 1500/case | ES6015-PH | 2000/case | ES3015-PH | 750/case |
| Tissue Cassette, tan | ES3336-T | 1500/case | ES6015-T | 2000/case | ES3015-T | 750/case |
| Tissue Cassette, white | ES3336-W | 1500/case | ES6015-W | 2000/case | ES3015-W | 750/case |
| Tissue Cassette, yellow | ES3336-Y | 1500/case | ES6015-Y | 2000/case | ES3015-Y | 750/case |



| Description | Bulk Cat No. | Bulk UOM | Taped Cat. No. | Taped UOM | Sleeved Cat. No. | Sleeved UOM |
|-------------------------|--------------|-----------|----------------|-----------|------------------|-------------|
| Biopsy Cassette, aqua | ES3406-A | 1500/case | ES6016-A | 2000/case | ES3016-A | 750/case |
| Biopsy Cassette, blue | ES3406-B | 1500/case | ES6016-B | 2000/case | ES3016-B | 750/case |
| Biopsy Cassette, green | ES3406-G | 1500/case | ES6016-G | 2000/case | ES3016-G | 750/case |
| Biopsy Cassette, gray | ES3406-GY | 1500/case | ES6016-GY | 2000/case | ES3016-GY | 750/case |
| Biopsy Cassette, lilac | ES3406-L | 1500/case | ES6016-L | 2000/case | ES3016-L | 750/case |
| Biopsy Cassette, orange | ES3406-O | 1500/case | ES6016-O | 2000/case | ES3016-O | 750/case |
| Biopsy Cassette, pink | ES3406-P | 1500/case | ES6016-P | 2000/case | ES3016-P | 750/case |
| Biopsy Cassette, peach | ES3406-PH | 1500/case | ES6016-PH | 2000/case | ES3016-PH | 750/case |
| Biopsy Cassette, tan | ES3406-T | 1500/case | ES6016-T | 2000/case | ES3016-T | 750/case |
| Biopsy Cassette, white | ES3406-W | 1500/case | ES6016-W | 2000/case | ES3016-W | 750/case |
| Biopsy Cassette, yellow | ES3406-Y | 1500/case | ES6016-Y | 2000/case | ES3016-Y | 750/case |



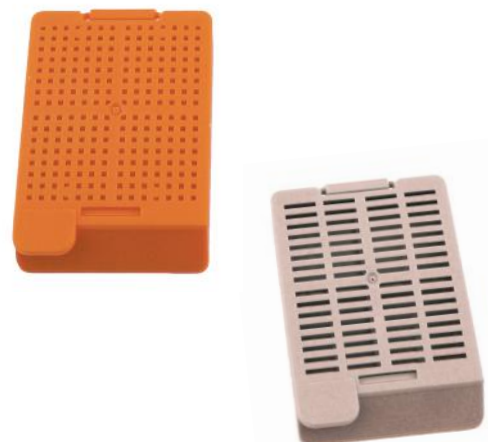
| Description | Bulk Cat No. | Bulk UOM | Taped Cat. No. | Taped UOM | Sleeved Cat. No. | Sleeved UOM |
|-----------------------|--------------|-----------|----------------|-----------|------------------|-------------|
| Mesh Cassette, aqua | ES3335-A | 1000/case | ES6014-A | 2000/case | ES3017-A | 750/case |
| Mesh Cassette, blue | ES3335-B | 1000/case | ES6014-B | 2000/case | ES3017-B | 750/case |
| Mesh Cassette, green | ES3335-G | 1000/case | ES6014-G | 2000/case | ES3017-G | 750/case |
| Mesh Cassette, gray | ES3335-GY | 1000/case | ES6014-GY | 2000/case | ES3017-GY | 750/case |
| Mesh Cassette, lilac | ES3335-L | 1000/case | ES6014-L | 2000/case | ES3017-L | 750/case |
| Mesh Cassette, orange | ES3335-O | 1000/case | ES6014-O | 2000/case | ES3017-O | 750/case |
| Mesh Cassette, pink | ES3335-P | 1000/case | ES6014-P | 2000/case | ES3017-P | 750/case |
| Mesh Cassette, peach | ES3335-PH | 1000/case | ES6014-PH | 2000/case | ES3017-PH | 750/case |
| Mesh Cassette, tan | ES3335-T | 1000/case | ES6014-T | 2000/case | ES3017-T | 750/case |
| Mesh Cassette, white | ES3335-W | 1000/case | ES6014-W | 2000/case | ES3017-W | 750/case |
| Mesh Cassette, yellow | ES3335-Y | 1000/case | ES6014-Y | 2000/case | ES3017-Y | 750/case |



Hinged Tissue and Biopsy Cassette

- Molded from a special high-density polymer resistant to histology solvents
- Hinged at back of cassette
- Features a front tab for easy handling of cassette
- Three frosted writing surfaces including the anterior surface at a 45° angle

| Description | Tissue Cat No. | UOM | Biopsy Cat No. | UOM |
|-------------------------|----------------|-----------|----------------|-----------|
| Hinged Cassette, aqua | ES3018-A | 1500/case | ES3407-A | 1500/case |
| Hinged Cassette, blue | ES3018-B | 1500/case | ES3407-B | 1500/case |
| Hinged Cassette, green | ES3018-G | 1500/case | ES3407-G | 1500/case |
| Hinged Cassette, gray | ES3018-GY | 1500/case | ES3407-GY | 1500/case |
| Hinged Cassette, lilac | ES3018-L | 1500/case | ES3407-L | 1500/case |
| Hinged Cassette, orange | ES3018-O | 1500/case | ES3407-O | 1500/case |
| Hinged Cassette, pink | ES3018-P | 1500/case | ES3407-P | 1500/case |
| Hinged Cassette, peach | ES3018-PH | 1500/case | ES3407-PH | 1500/case |
| Hinged Cassette, tan | ES3018-T | 1500/case | ES3407-T | 1500/case |
| Hinged Cassette, white | ES3018-W | 1500/case | ES3407-W | 1500/case |
| Hinged Cassette, yellow | ES3018-Y | 1500/case | ES3407-Y | 1500/case |



Hinged Cassette with Separate Lid (Tissue & Biopsy)

- Molded from a special high-density polymer resistant to histology solvents
- Hinged at back of cassette with lids packaged separately
- Features a front tab for easy handling of cassette
- Three frosted writing surfaces including the anterior surface at a 45° angle

| Description | Bulk Cat No. | UOM | Sleeve Cat No. | UOM |
|-------------------------------------|--------------|-----------|----------------|----------|
| Hinged Biopsy, Lid Separate, aqua | ES6034-A | 1000/case | ES6037-A | 750/case |
| Hinged Biopsy, Lid Separate, blue | ES6034-B | 1000/case | ES6037-B | 750/case |
| Hinged Biopsy, Lid Separate, green | ES6034-G | 1000/case | ES6037-G | 750/case |
| Hinged Biopsy, Lid Separate, gray | ES6034-GY | 1000/case | ES6037-GY | 750/case |
| Hinged Biopsy, Lid Separate, lilac | ES6034-L | 1000/case | ES6037-L | 750/case |
| Hinged Biopsy, Lid Separate, orange | ES6034-O | 1000/case | ES6037-O | 750/case |
| Hinged Biopsy, Lid Separate, pink | ES6034-P | 1000/case | ES6037-P | 750/case |
| Hinged Biopsy, Lid Separate, peach | ES6034-PH | 1000/case | ES6037-PH | 750/case |
| Hinged Biopsy, Lid Separate, tan | ES6034-T | 1000/case | ES6037-T | 750/case |
| Hinged Biopsy, Lid Separate, white | ES6034-W | 1000/case | ES6037-W | 750/case |
| Hinged Biopsy, Lid Separate, yellow | ES6034-Y | 1000/case | ES6037-Y | 750/case |

| Description | Bulk Cat No. | UOM | Sleeve Cat No. | UOM |
|-------------------------------------|--------------|-----------|----------------|----------|
| Hinged Tissue, Lid Separate, aqua | ES6053-A | 1000/case | ES6036-A | 750/case |
| Hinged Tissue, Lid Separate, blue | ES6053-B | 1000/case | ES6036-B | 750/case |
| Hinged Tissue, Lid Separate, green | ES6053-G | 1000/case | ES6036-G | 750/case |
| Hinged Tissue, Lid Separate, gray | ES6053-GY | 1000/case | ES6036-GY | 750/case |
| Hinged Tissue, Lid Separate, lilac | ES6053-L | 1000/case | ES6036-L | 750/case |
| Hinged Tissue, Lid Separate, orange | ES6053-O | 1000/case | ES6036-O | 750/case |
| Hinged Tissue, Lid Separate, pink | ES6053-P | 1000/case | ES6036-P | 750/case |
| Hinged Tissue, Lid Separate, peach | ES6053-PH | 1000/case | ES6036-PH | 750/case |
| Hinged Tissue, Lid Separate, tan | ES6053-T | 1000/case | ES6036-T | 750/case |
| Hinged Tissue, Lid Separate, white | ES6053-W | 1000/case | ES6036-W | 750/case |
| Hinged Tissue, Lid Separate, yellow | ES6053-Y | 1000/case | ES6036-Y | 750/case |



Cassette Color Guide





Hinged Tissue and Biopsy Cassette with Separate Lid (Taped, Bulk, Sleeve)

- Molded from a special high-density polymer resistant to histology solvents
- Special hinge that allows cassettes to be opened and closed as often as necessary with lids packaged separately
- Three frosted writing surfaces including the anterior surface at a 45° angle

| Description | Bulk Cat No. | UOM | Sleeve Cat No. | UOM | Taped Cat. No. | UOM |
|---------------------------------------|--------------|-----------|----------------|----------|----------------|------|
| Tissue Cassette, Lid Separate, aqua | ES6041-A | 1000/case | ES6022-A | 750/case | ES6047-A | 2000 |
| Tissue Cassette, Lid Separate, blue | ES6041-B | 1000/case | ES6022-B | 750/case | ES6047-B | 2000 |
| Tissue Cassette, Lid Separate, green | ES6041-G | 1000/case | ES6022-G | 750/case | ES6047-G | 2000 |
| Tissue Cassette, Lid Separate, gray | ES6041-GY | 1000/case | ES6022-GY | 750/case | ES6047-GY | 2000 |
| Tissue Cassette, Lid Separate, lilac | ES6041-L | 1000/case | ES6022-L | 750/case | ES6047-L | 2000 |
| Tissue Cassette, Lid Separate, orange | ES6041-O | 1000/case | ES6022-O | 750/case | ES6047-O | 2000 |
| Tissue Cassette, Lid Separate, pink | ES6041-P | 1000/case | ES6022-P | 750/case | ES6047-P | 2000 |
| Tissue Cassette, Lid Separate, peach | ES6041-PH | 1000/case | ES6022-PH | 750/case | ES6047-PH | 2000 |
| Tissue Cassette, Lid Separate, tan | ES6041-T | 1000/case | ES6022-T | 750/case | ES6047-T | 2000 |
| Tissue Cassette, Lid Separate, white | ES6041-W | 1000/case | ES6022-W | 750/case | ES6047-W | 2000 |
| Tissue Cassette, Lid Separate, yellow | ES6041-Y | 1000/case | ES6022-Y | 750/case | ES6047-Y | 2000 |



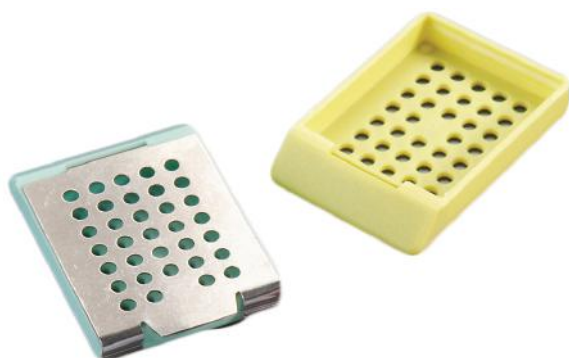
| Description | Bulk Cat No. | UOM | Sleeve Cat No. | UOM | Taped Cat. No. | UOM |
|---------------------------------------|--------------|-----------|----------------|----------|----------------|------|
| Biopsy Cassette, Lid Separate, aqua | ES6042-A | 1000/case | ES6023-A | 750/case | ES6048-A | 2000 |
| Biopsy Cassette, Lid Separate, blue | ES6042-B | 1000/case | ES6023-B | 750/case | ES6048-B | 2000 |
| Biopsy Cassette, Lid Separate, green | ES6042-G | 1000/case | ES6023-G | 750/case | ES6048-G | 2000 |
| Biopsy Cassette, Lid Separate, gray | ES6042-GY | 1000/case | ES6023-GY | 750/case | ES6048-GY | 2000 |
| Biopsy Cassette, Lid Separate, lilac | ES6042-L | 1000/case | ES6023-L | 750/case | ES6048-L | 2000 |
| Biopsy Cassette, Lid Separate, orange | ES6042-O | 1000/case | ES6023-O | 750/case | ES6048-O | 2000 |
| Biopsy Cassette, Lid Separate, pink | ES6042-P | 1000/case | ES6023-P | 750/case | ES6048-P | 2000 |
| Biopsy Cassette, Lid Separate, peach | ES6042-PH | 1000/case | ES6023-PH | 750/case | ES6048-PH | 2000 |
| Biopsy Cassette, Lid Separate, tan | ES6042-T | 1000/case | ES6023-T | 750/case | ES6048-T | 2000 |
| Biopsy Cassette, Lid Separate, white | ES6042-W | 1000/case | ES6023-W | 750/case | ES6048-W | 2000 |
| Biopsy Cassette, Lid Separate, yellow | ES6042-Y | 1000/case | ES6023-Y | 750/case | ES6048-Y | 2000 |



Embedding Cassette with Metal Lid

Disposable cassettes with metal lids (sold separately) are suitable for holding and identifying tissue samples during processing, embedding, and sectioning procedures.

- Specially designed for use with our metal lid (ES6019-LID)
- Large anterior labeling area at a 45° angle
- Fits securely in microtome chuck adapter



| Cat. No. | Description | UOM |
|------------|-------------------------------------|-----------|
| ES6019-A | Embedding Cassette (no lid), aqua | 1500/case |
| ES6019-B | Embedding Cassette (no lid), blue | 1500/case |
| ES6019-G | Embedding Cassette (no lid), green | 1500/case |
| ES6019-GY | Embedding Cassette (no lid), gray | 1500/case |
| ES6019-L | Embedding Cassette (no lid), lilac | 1500/case |
| ES6019-O | Embedding Cassette (no lid), orange | 1500/case |
| ES6019-P | Embedding Cassette (no lid), pink | 1500/case |
| ES6019-PH | Embedding Cassette (no lid), peach | 1500/case |
| ES6019-T | Embedding Cassette (no lid), tan | 1500/case |
| ES6019-W | Embedding Cassette (no lid), white | 1500/case |
| ES6019-Y | Embedding Cassette (no lid), yellow | 1500/case |
| ES6019-LID | Metal Lids for ES6019 Cassettes | 25/pack |

Cassette Color Guide



Primo

CASSETTE PRINTER



| Cat. No. | Description |
|----------|-------------------------|
| ES39915 | Primo™ Cassette Printer |

- 6 hoppers allows for multiple cassette colors for efficient workflow
- On-demand or batch mode printing, high printing speed up to 20 cassettes per minute
- Can install scanner for instant scanning
- Compatible with third-party cassettes and design for large printing

Specifications:

| | |
|-------------------------------|--|
| Dimensions (L x W x H): | 21 x 16 x 33 in. (540 x 400 x 838 mm) |
| Weight: | 88 lbs. (40 kg) |
| Power requirements: | AC, 220-240V, 50/60 Hz 350 Watts |
| Laser model: | Ultraviolet laser |
| Laser power: | 1 Watt |
| Working temperature: | 59°F ~ 86°F (15°C ~ 30°C) |
| Work noise: | ≤ 65dB |
| Data interface: | USB2.0 |
| Cassette printing speed: | 3 seconds per cassette (on-demand printing) |
| High res. print options: | 500 DPI |
| Number of hoppers : | 6 clear hoppers for cassettes with or without lids |
| Cassette capacity per hopper: | 80 cassettes per hopper |
| Total cassette capacity: | 480 cassettes |
| Output tray capacity: | 150 cassettes |

- Laser tissue cassettes printer (ribbon or cartridge free printing)
- Low work noise ≤65dB, meet the hospital pathology and labs environment requirement
- Integrate to LIS/HIS System
- Perfectly compatible with our hinged tissue cassettes

Specifications:

| | |
|-------------------------------|---|
| Dimensions (L x W x H): | 20 x 11.8 x 29 in. (510 x 300 x 737 mm) |
| Weight: | 67 lbs. (30 kg) |
| Power requirements: | AC, 220-240V, 50/60 Hz, 350 Watts |
| Laser model: | Ultraviolet laser |
| Laser power: | 1 Watt |
| Working temperature: | 59°F ~ 86°F (15°C ~ 30°C) |
| Work noise: | ≤65dB |
| Data interface: | USB2.0 |
| Cassette printing speed: | Every 3 seconds per cassette (on-demand printing) |
| High res. print options: | 500 DPI |
| Number of hoppers : | 6 hoppers for cassettes with or without lids |
| Cassette capacity per hopper: | 80 cassettes per hoppers |
| Total cassette capacity: | 480 cassettes |
| Output tray capacity: | 6 cassettes |

Primo

BP CASSETTE PRINTER



| Cat. No. | Description |
|------------|----------------------------|
| ES39915-BP | Primo™ BP Cassette Printer |



10% Neutral Buffered Formalin

This neutral buffered formalin fixative is ideal for a general purpose fixative for all tissues. The formulation is enhanced by buffering that optimizes results by light microscopy and immunohistochemistry.



| Cat. No. | Description | UOM |
|------------|--|-------------------|
| NBF-4-G | 10% Neutral Buffered Formalin, gallon | 4 x 1 gallon/case |
| CUNBF-2.5G | 10% Neutral Buffered Formalin, 2.5 gallon cube | Each |
| CUNBF-5-G | 10% Neutral Buffered Formalin, 5 gallon cube | Each |
| NBF30G | 10% Neutral Buffered Formalin, 30 gallon | Each |
| NBF55G | 10% Neutral Buffered Formalin, 55 gallon drum | Each |

EasyFix™ Alcoholic Formalin

Our alcoholic formalin is designed for tissues that may be more difficult to fix such as fatty tissues, breast, and colon.

| Cat. No. | Description | UOM |
|----------|-------------------------------------|-------------------|
| ES784 | EasyFix™ Alcoholic Formalin, gallon | 4 x 1 gallon/case |

Bouin's Fixative

This solution is a saturated picric acid solution that is useful for preserving delicate tissues and gastrointestinal tract specimens.

| Cat. No. | Description | UOM |
|-----------|-----------------------------------|-------------------|
| B-F-G | Bouin's Fixative, gallon | 4 x 1 gallon/case |
| CUNB-2.5G | Bouin's Fixative, 2.5 gallon cube | Each |
| CUNB-5G | Bouin's Fixative, 5 gallon cube | Each |

Hollande's Fixative

Recommended for gastrointestinal tract specimens and fixation of endocrine tissues. Hollande's fixative will produce less lysis than Bouin's and has some decalcifying properties.

| Cat. No. | Description | UOM |
|----------|-----------------------------|-------------------|
| HF-4-G | Hollande's Fixative, gallon | 4 x 1 gallon/case |

20% Neutral Buffered Formalin

20% neutral buffered formalin is designed for general fixation and is useful for surgical tissues and necropsy specimens.

| Cat. No. | Description | UOM |
|-----------|--------------------------------|-------------------|
| 20NBF-4-G | 20% NB Formalin, gallon | 4 x 1 gallon/case |
| 20CUNBF5G | 20% NB Formalin, 5 gallon cube | Each |

Zinc Formalin

Our zinc formalin promotes excellent H&E staining and enhances immunochemistry results.

- Ideal for all tissue types
- Enhances nuclear and cytoplasmic fixation
- Non-coagulant quality of formalin
- Coagulant fixative quality provided by zinc

| Cat. No. | Description | UOM |
|------------|--------------------------------|-------------------|
| ZF-4-G | Zinc Formalin, gallon | 4 x 1 gallon/case |
| CUNZF-2.5G | Zinc Formalin, 2.5 gallon cube | Each |
| CUNZF-5-G | Zinc Formalin, 5 gallon cube | Each |

Michel's Transport Medium

Michel's Transport Medium is prepared for the transport of fresh unfixed tissues submitted for frozen sectioning and immunofluorescent testing.

| Cat. No. | Description | UOM |
|------------|-----------------------------------|------|
| ES3271 | Michel's Transport Medium, gallon | Each |
| ES3271-500 | Michel's Transport Medium, 500 mL | Each |

Azer-5 Fixative

Azer-5 Fixative is a B-5 substitute that provides equivalent cytological characteristics as in any B-5 fixation.

- Produces remarkable fixation for bone marrow, lymphoid tissue, and GI biopsies
- Contains formaldehyde and zinc
- Considered a true replacement for mercury-based fixatives

| Cat. No. | Description | UOM |
|----------|-------------------------|------|
| ES783 | Azer-5 Fixative, 32 oz. | Each |
| ES782 | Azer-5 Fixative, gallon | Each |

37% Formaldehyde

37% formaldehyde is for use in the most critical applications in microscopy and histology. Our formula is stabilized with methanol.



| Cat. No. | Description | UOM |
|-----------|-----------------------------|-------------------|
| F-37-32OZ | 37% Formaldehyde, 32 oz. | 12 x 32 oz./case |
| F-37-1G | 37% Formaldehyde, gallon | 4 x 1 gallon/case |
| F-37-5G | 37% Formaldehyde, 5 gallon | Each |
| F-37-55G | 37% Formaldehyde, 55 gallon | Each |

AzerPrep Fixative

- Uniquely formulated tissue fixative rapidly dehydrates fatty tissue for efficient and complete lymph node recovery
- Suitable as a primary or secondary fixative

| Cat. No. | Description | UOM |
|----------|------------------------------------|------|
| ES34054 | AzerPrep fixative, 2.5 gallon cube | Each |
| ES34056 | AzerPrep fixative, 5 gallon cube | Each |

Decalcifiers

Decalcifier with formic acid allows for simultaneous decalcification and fixation.

Decalcifier with hydrochloric acid is a more aggressive form of decalcifier.

| Cat. No. | Description | UOM |
|----------|--|-------------------|
| ES732 | Decalcifier, formic acid, 32 oz. | 12 x 32 oz./case |
| ES731 | Decalcifier, formic acid, gallon | 4 x 1 gallon/case |
| ES734 | Decalcifier, hydrochloric acid, 32 oz. | 12 x 32 oz./case |
| ES733 | Decalcifier, hydrochloric acid, gallon | 4 x 1 gallon/case |

Formalin Concentrate

Formalin concentrate provides an economical option for 10% neutral buffered formalin. Simply mix one part concentrate with four parts water for up to 5 gallons of 10% neutral buffered formalin. Formalin concentrate allows your lab to save on shipping costs and storage.

| Cat. No. | Description | UOM |
|-----------|--------------------------------------|-------------------|
| ES772 | Formalin Concentrate, gallon | 4 x 1 gallon/case |
| ES772-30G | Formalin Concentrate, 30 gallon drum | Each |

Glacial Acetic Acid

Glacial acetic acid is a frequent component of tissue fixing solutions. Its efficient fixing action on the nucleus, as well as its rapid penetration, makes it an important part of good fixatives. It fixes the nucleoproteins, but not the proteins of the cytoplasm.

| Cat. No. | Description | UOM |
|----------|-----------------------------|------|
| ES638-16 | Glacial Acetic Acid, 16 oz. | Each |
| ES638-1G | Glacial Acetic Acid, gallon | Each |

Potassium Hydroxide

- Used to soften nail clippings after fixation for histological evaluation
- Available in 10% and 30% concentration

| Cat. No. | Description | UOM |
|----------|---|------|
| ES660 | Potassium Hydroxide (10%), 2 oz. dropper bottle | Each |
| ES619 | Potassium Hydroxide (10%), 16 oz. | Each |
| ES619-30 | Potassium Hydroxide (30%), 5 gallon cube | Each |

All of Azer Scientific's fixative and reagent labels and Safety Data Sheets are updated with the new GHS requirements.

Have questions about the new GHS requirements?

Our technical support staff can help!
Contact us at **1.877.770.AZER**





Reagent Grade Alcohols

Our reagent grade alcohol is a denatured form of ethyl alcohol approved for sale under U.S. regulations.

- 90 parts ethyl alcohol, 5 parts methyl alcohol, and 5 parts isopropyl alcohol
- The preferred mixture for dehydrating tissue samples prior to embedding



Now color coded to avoid mixing up reagents!

| Cat. No. | Description | UOM |
|----------|-------------------------------------|-------------------|
| ES631 | Reagent Grade Alcohol, 100%, gallon | 4 x 1 gallon/case |
| ES753 | Reagent Grade Alcohol, 95%, gallon | 4 x 1 gallon/case |
| ES750 | Reagent Grade Alcohol, 80%, gallon | 4 x 1 gallon/case |
| ES749 | Reagent Grade Alcohol, 70%, gallon | 4 x 1 gallon/case |
| ES748 | Reagent Grade Alcohol, 50%, gallon | 4 x 1 gallon/case |

Xylene & Xylene Substitutes

Our **xylene** is designed for use as a clearing agent within the histology lab. Meets USP quality grade specifications. Azer's **Everclear Xylene Substitute** is a safe alternative to xylene. It can be used as a solvent and clearing agent, as well as for dissolving paraffin, waxes, glues, and adhesives.

D-Limonene is a safe, citrus-based alternative to xylene.



| Cat. No. | Description | UOM |
|----------|--------------------------------------|-------------------|
| ES609 | Xylene, gallon | 4 x 1 gallon/case |
| ES657 | Everclear, xylene substitute, gallon | 4 x 1 gallon/case |

EXCEL Alcohols

Azer's EXCEL alcohol is designed to prevent over-dehydration. The specially blended formula does not contain ethanol and is ideal for small specimens and biopsies.



| Cat. No. | Description | UOM |
|-----------|--------------------|-------------------|
| ES653-95 | EXCEL 95%, gallon | 4 x 1 gallon/case |
| ES653-100 | EXCEL 100%, gallon | 4 x 1 gallon/case |

Isopropyl & Methyl Alcohol

Isopropyl and methyl alcohols are ideal for specialty fixation and dehydration in the histology lab.

| Cat. No. | Description | UOM |
|----------|---------------------------|-------------------|
| ES602 | Isopropyl Alcohol, gallon | 4 x 1 gallon/case |
| ES607 | Methyl Alcohol, gallon | 4 x 1 gallon/case |

Laboratory Grade Water

We offer a selection of deionized water, high purity water, and reagent grade water for use in the histology lab.



| Cat. No. | Description | UOM |
|------------|----------------------------------|-------------------|
| ES616 | Deionized Water, gallon | 4 x 1 gallon/case |
| ES616-2.5G | Deionized Water, 2.5 gallon cube | Each |
| ES616-5G | Deionized Water, 5 gallon cube | Each |
| ES611 | High Purity Water, gallon | 4 x 1 gallon/case |
| ES612 | High Purity Water, 5 gallon cube | Each |
| ES613 | Reagent Grade Water, 32 oz. | 12 x 32 oz./case |
| ES613-4G | Reagent Grade Water, gallon | 4 x 1 gallon/case |

AzerPath™ Embedding Center

- Offers a heated work area with anti-reflective white LEDs
- Adaptable cooling module that can be positioned on the right or left of the dispensing system
- Features a user-friendly operating panel with easy temperature and timer programming
- 2 large chambers for holding up to 190 cassettes and 400 base molds
- Removable trays for an easy cleaning process
- Multi-positional field magnifier
- 6 independently heated holes, making it easy to work with standard pliers



| Cat. No. | Description | UOM |
|----------|------------------|------|
| ES39660 | Embedding Center | Each |

AzerFin™ Embedding & Infiltration Paraffin

Azer Scientific's specially formulated paraffin blends will support a one or two paraffin system for tissue embedding and infiltration.

- Manufactured and designed to prevent residue from remaining in your paraffin heating system or embedding center
- Performs optimally with many sample types, from small specimens to hard tissue samples
- **AzerFin™** paraffin is designed for softer paraffin applications
- **AzerFin™ Advance** paraffin is designed for harder paraffin applications



| Cat. No. | Description | UOM |
|----------|--------------------------------------|--------|
| ES34901 | AzerFin™ Paraffin, 1 kg. bag | 8/case |
| ES34903 | AzerFin™ Advance Paraffin, 1 kg. bag | 8/case |

Metal Base Molds

- Features a flat bottom surface
- Excellent thermal conductivity
- "Winged" edge for easy handling
- Resists tipping
- Remains rust-free



| Cat. No. | Description | UOM |
|----------|---------------------------------|---------|
| ES4440 | Metal Base Mold, 15 x 15 x 5 mm | 12/case |
| ES4441 | Metal Base Mold, 24 x 24 x 5 mm | 12/case |
| ES4442 | Metal Base Mold, 7 x 7 x 5 mm | 12/case |
| ES4443 | Metal Base Mold, 30 x 24 x 5 mm | 12/case |
| ES4444 | Metal Base Mold, 37 x 24 x 5 mm | 12/case |

Paraffin Dispenser

- Tabletop style dispenser, 2.5 gallon capacity
- Built-in temperature controller
- Strong outer metal shell and a durable stainless steel interior
- Maximum temperature of 72°C



| Cat. No. | Description | UOM |
|----------|--------------------|------|
| ES4570 | Paraffin Dispenser | Each |

Disposable Base Molds

- Specially formulated plastic material
- Provides excellent thermal exchange
- Packaging: 500 base molds/box



| Cat. No. | Description | UOM |
|----------|--------------------------------------|-----------|
| ES3052 | Disposable Base Mold, 7 x 7 x 5 mm | 1000/case |
| ES3053 | Disposable Base Mold, 15 x 15 x 5 mm | 1000/case |
| ES3054 | Disposable Base Mold, 24 x 24 x 5 mm | 1000/case |
| ES3055 | Disposable Base Mold, 30 x 24 x 5 mm | 1000/case |
| ES3056 | Disposable Base Mold, 37 x 24 x 5 mm | 1000/case |

Wax Trimmer

- Grooved surface to help remove and collect paraffin
- Ridges allow for collection and drainage of paraffin into the collection tray
- Lip prevents paraffin from running down the side
- Smooth metal surface allows the user to trim multiple cassettes at the same time



| Cat. No. | Description | UOM |
|-----------|----------------------------|----------|
| ES4571 | Wax Trimmer | Each |
| ES4571-PB | Plastic Liner for Wax Tray | 300/case |



Universal Microtome Alignment Tool

- Compatible with all microtomes
- Built-in level allows for easy alignment of microtome
- Includes a case for easy storage and transport of tool
- For instructions for use, please contact us or visit our website



| Cat. No. | Description | UOM |
|----------|------------------------------------|------|
| ES39493 | Universal Microtome Alignment Tool | Each |

Microtome Blades

Our microtome blades are designed for precise and exact sectioning of tissue specimens. The use of our sophisticated heating process and excellent polishing and coating techniques results in smooth, clean sections everytime. Available in high and low profile.



| Cat. No. | Description | UOM |
|----------|-------------------------------------|---------|
| ES33670 | Azer Microtome Blades, low profile | 50/pack |
| ES33675 | Azer Microtome Blades, high profile | 50/pack |

Brush

Camel hair mounted on a wooden handle with metal ferrule. This brush is helpful for dusting sensitive instruments. Brush portion measures 3/4" x 1/2".



| Cat. No. | Description | UOM |
|----------|---------------------------------------|---------|
| ES3199 | Camel Hair Brush, wooden handle, 6.5" | 12/case |

Rapid Freeze™

Azer Scientific's Rapid Freeze™ spray is used to instantly freeze tissue sections at the cryostat or to freeze tissue blocks at the microtome.

- Non-flammable and moisture-free
- Brings samples to -60°F in under three seconds
- Contains no CFC's or HFC's, and will not deplete stratospheric ozone
- Our proprietary **Rapid Zap** nozzle attachment is available for applications requiring greater precision
- Eco-friendly refrigerant (1234ez) breaks down in the atmosphere within 18 days (compared to the 13 years it would take for the previous refrigerant, 134a to break down), reducing CO2 emissions by 99.6%



Light Duty Task Wipes

- Low particulate, non-streak cleaning
- Extra absorbency performance
- Sensitive and delicate parts wiping
- Anti-static cover



| Cat. No. | Description | UOM |
|----------|-----------------------------------|------------------------|
| ES86692 | Azer light duty task wipes, small | 280/box, 60 boxes/case |
| ES86694 | Azer light duty task wipes, large | 140/box, 15 boxes/case |

| Cat. No. | Description | UOM |
|----------|---|---------|
| RAP-FRZ | Rapid Freeze™ tissue/block freezing spray, 10 oz. | 12/case |
| RAP-ZAP | Applicator Nozzle for Rapid Freeze™ | Each |

AzerPath Lighted Tissue Floating Bath

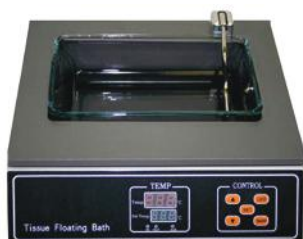
- Sleek, easy-to-use design with a removable PYREX® rectangular glass basin
- The transparent basin with a dark background allows for clear viewing of specimens without a glare
- Precise temperature settings are operated utilizing buttons on the base of the device and are regulated by a digital microprocessor which ensures optimal temperature protection
- Temperature Range: ambient +5°C to 65°C



| Cat. No. | Description | UOM |
|----------|----------------------|------|
| ES4551 | Tissue Floating Bath | Each |

Lighted Tissue Floating Bath

- Low profile design with a removable rectangular glass basin
- Features an easy to read LED display that shows set and actual temperatures
- Temperature Range: Room Temperature to 75°C (+/- 1°C)
- Tray Dimensions: 10" x 6" x 2"



| Cat. No. | Description | UOM |
|----------|------------------------------|------|
| ES3416 | Lighted Tissue Floating Bath | Each |

Slide Warmer

- Ideal for slides mounted with tissue sections
- Thermal heaters ensures even heat transfer across surface
- Anodized black surface provides contrast
- Features an LED temperature display
- Temperature Range: 75°C +/- 3°
- Dimensions: Small: 10.25" x 8" x 3"
Large: 25.5" x 9.5" x 4"



| Cat. No. | Description | UOM |
|----------|--|------|
| ES4572 | Slide Warmer, small, 23 slide capacity | Each |
| ES4576 | Slide Warmer, large, 66 slide capacity | Each |

Tissue Floating Bath

- Coated chamber for easy clean up
- 2.3L capacity, low profile
- Temperature Range: Room Temperature to 75°C



| Cat. No. | Description | UOM |
|----------|----------------------|------|
| ES3079 | Tissue Floating Bath | Each |

Slide Warmer

- Multi-tier slide warmer allows user to dry more slides at a time
- Features a redesigned edge to easily place and remove slides
- Dimensions: 14" x 14" x 4"
- Temperature Range: Room Temperature to 70°C



| Cat. No. | Description | UOM |
|----------|--------------------------|------|
| ES4573 | Slide Warmer, multi-tier | Each |

Slide Warmer with Hinged Cover

- Ideal for slides mounted with tissue sections
- Thermal heaters ensures even heat transfer across surface
- Anodized black surface provides contrast
- Features an LED temperature display
- Attached hinged cover with clear viewing area
- Temperature Range: 70°C
- Dimensions: Small: 12" x 9" x 4.5"
Large: 27" x 11" x 64"



| Cat. No. | Description | UOM |
|-----------|--|------|
| ES4572-HC | Slide Warmer with hinged cover, small, 23 slide capacity | Each |
| ES4576-HC | Slide Warmer with hinged cover, large, 66 slide capacity | Each |



Unifrost® Microscope Slides

- Pre-cleaned with smooth, grounded edges
- Made from high-quality white German glass
- All slides feature a single side color frosted end to help reduce amount of jamming in automated systems
- The frosted ends are resistant to all common chemicals used in the histology laboratory
- Clipped corner slides available for use in popular slide printers
- Adhesive slides are available, prepared with a permanent adhesive which firmly anchors all specimen types to the slide



| Color | Standard | Clipped Corner | Standard (+) | Clipped Corner (+) | Thermal | Thermal (+) | Clipped Corner Thermal | Clipped Corner Thermal (+) | UOM |
|--------|----------|----------------|--------------|--------------------|------------|-------------|------------------------|----------------------------|-----------|
| Aqua | EMS200A | EMSC200A | EMS200A+ | EMSC200A+ | EMS200A-TH | EMS200A-TH+ | - | - | 1440/case |
| Blue | EMS200B | EMSC200B | EMS200B+ | EMSC200B+ | EMS200B-TH | EMS200B-TH+ | - | - | 1440/case |
| Green | EMS200G | EMSC200G | EMS200G+ | EMSC200G+ | EMS200G-TH | EMS200G-TH+ | - | - | 1440/case |
| Gray | EMS200GY | EMSC200GY | EMS200GY+ | EMSC200GY+ | - | - | - | - | 1440/case |
| Lilac | EMS200L | EMSC200L | EMS200L+ | EMSC200L+ | - | - | - | - | 1440/case |
| Orange | EMS200OR | EMSC200OR | EMS200OR+ | EMSC200OR+ | - | - | - | - | 1440/case |
| Pink | EMS200P | EMSC200P | EMS200P+ | EMSC200P+ | EMS200P-TH | EMS200P-TH+ | - | - | 1440/case |
| White | EMS200W | EMSC200W | EMS200W+ | EMSC200W+ | EMS200W-TH | EMS200W-TH+ | EMSC200W-TH | EMSC200W-TH+ | 1440/case |
| Yellow | EMS200Y | EMSC200Y | EMS200Y+ | EMSC200Y+ | EMS200Y-TH | EMS200Y-TH+ | - | - | 1440/case |

Histobond™ Slides

- Emit the lowest fluorescence
- Ultra thin, color-coated ends ideal for automation
- Prepared with a permanent positive charge which firmly anchors all types of sections to the slide



| Cat. No. | Description | UOM |
|------------|--------------------------|-----------|
| UNIA75251+ | Histobond™ Slide, aqua | 1440/case |
| UNIB75251+ | Histobond™ Slide, blue | 1440/case |
| UNIG75251+ | Histobond™ Slide, green | 1440/case |
| UNIL75251+ | Histobond™ Slide, lilac | 1440/case |
| UNIP75251+ | Histobond™ Slide, pink | 1440/case |
| UNIW75251+ | Histobond™ Slide, white | 1440/case |
| UNIY75251+ | Histobond™ Slide, yellow | 1440/case |

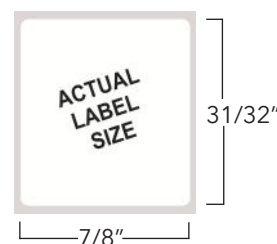
Azerbond™ Slides for IHC

- Designed for the toughest, most difficult histology tissues
- Developed for use where standard adhesive coatings may fail
- Stands up to the toughest IHC procedures and provides excellent staining results
- Ideal for fluorescent microscopy

| Cat. No. | Description | UOM |
|----------|------------------------|-----------|
| EMS600W+ | Azerbond™ Slide, white | 1440/case |

Self Laminating Microscope Slide Label

- Thermal transfer golve friendly adhesive labels compatible with Ebar system printers
- Our self laminating microscope slide labels allow you to permanently label a slide and laminate it in three easy steps
- The label will be protected from peeling away and is stain and Xylene resistant
- Our labels allow your slides to lie completely flat after application
- Core size: 1"



| Cat. No. | Description | UOM |
|------------|---|-----------------|
| ESL-SL8209 | Self laminating microscope slide label, 31/32" x 7/8" | 540 labels/roll |

Presto SLIDE PRINTER



- Ultraviolet laser
- Permanent and resistant to degradation
- Integrate to LIS/HIS system
- High resolution; 500 x 500dpi
- High speed; less than 3 seconds for on-demand printing, or up to 20 slides per minute
- Input cartridge holds up to 100 slides and output holds up to 35 slides
- Continuous and on-demand printing model
- Barcode, QR code, logo, alphanumeric, graphic printing

Specifications:

| | |
|--------------------------|--|
| Dimensions (L x W x H): | 18.1 x 7.9 x 13.4 in. (460 x 200 x 340 mm) |
| Weight: | 42 lbs. (19 kg) |
| Power: | AC, 220-240V, 50/60 Hz, 300 Watts |
| Laser model: | Ultraviolet laser |
| Laser power: | 1 Watt |
| Work noise: | ≤65dB |
| Data interface: | USB2.0 |
| Slide printing speed: | > 3 sec. per slide, 20 slides per min. |
| High res. print options: | 500 DPIs |
| Slide capacity: | 100 slides |
| Output tray capacity: | 35 slides |

| Cat. No. | Description |
|----------|-------------|
|----------|-------------|

| | |
|---------|----------------------------------|
| ES39910 | Presto™ Microscope Slide Printer |
|---------|----------------------------------|

- Dual hopper functionality, with two 100 piece hoppers
- On-demand and batch mode printing
- Option of different colors or charged/non charged slides
- Switch seamlessly from one hopper to the other
- Includes setup and 2 pre-installed templates
- Upward delivery system

Specifications:

| | |
|----------------------------|--|
| Laser type: | Ultraviolet laser |
| Dimensions (L x W x H): | 17 x 9 x 14 in. (425 x 235 x 355mm) |
| Laser power: | 1 Watt |
| Work noise: | ≤65dB |
| Slide printing speed: | < 3 sec. per slide, 20 slides per min. |
| Resolution: | 500 DPI |
| Connectivity: | USB2.0 |
| Weight: | 46lbs. (21 kg) |
| Slide capacity: | 200 slides |
| Output tray capacity: | 40 slides |
| Power requirements: | AC, 90-240V, 50/60 Hz, 300 Watts |
| Certifications/Compliance: | ISO13485, CE and FDA |

Presto DUO UV SLIDE PRINTER



| Cat. No. | Description |
|----------|-------------|
|----------|-------------|

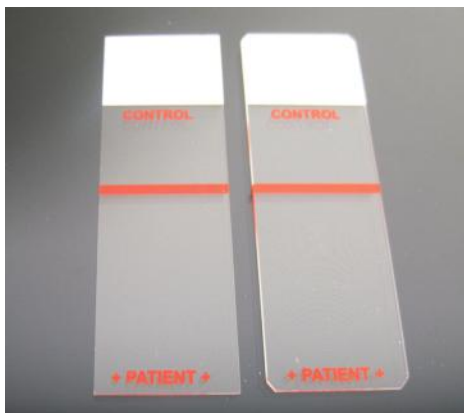
| | |
|---------|------------------------------|
| ES39912 | Presto™ Duo UV Slide Printer |
|---------|------------------------------|



Patient Control Slides

Our Unifrost® patient control slides are suitable for staining protocols which require a control.

- Feature spaces for both patient sample and control material
- A red line allows for the two samples to be separated (red line is printed on reverse side to allow for movement of reagents)
- Slide is treated with a chemical adhesive for better tissue adhesions
- Available with or without clipped corners



| Cat. No. | Description | UOM |
|----------|--|-----------|
| ESCS-100 | Patient Control Slide, clipped corners | 1440/case |
| ESCS-101 | Patient Control Slide, 90° corners | 1440/case |

Azer Scientific Cover Glass

- Made of pure white borosilicate glass of the first hydrolytic class with excellent chemical resistance and flatness
- Does not emit any disturbing fluorescence under ultraviolet light of the fluorescence microscopy
- Excellent performance in automated coverslippers
- Packaging: 1 oz. per pack (112450-20 is 2 oz. per pack)



| Cat. No. | Description | UOM |
|-----------|--------------------------------|---------------|
| 112222 | Cover Glass, 22 x 22 mm, No. 1 | 10 packs/case |
| 112430 | Cover Glass, 24 x 30 mm, No. 1 | 10 packs/case |
| 112440 | Cover Glass, 24 x 40 mm, No. 1 | 10 packs/case |
| 112450 | Cover Glass, 24 x 50 mm, No. 1 | 10 packs/case |
| 112450-20 | Cover Glass, 24 x 50 mm, No. 1 | 10 packs/case |
| 112455 | Cover Glass, 24 x 55 mm, No. 1 | 10 packs/case |
| 112460 | Cover Glass, 24 x 60 mm, No. 1 | 10 packs/case |

Azer Scientific Mounting Medium S-Mounting Medium

A ready-to-use permanent cover slipping medium that is compatible with Xylene or our Everclear Xylene substitute. S-Mounting medium acrylic formula is quick drying and the low viscosity facilitates easy application with no air bubbles. This formula will not yellow or crack over time.

| Cat. No. | Description | UOM |
|----------|--|------------------|
| ES723 | S-Mounting Medium w/ acrylic, 4 oz. dropper bottle | 12 x 4 oz./case |
| ES724 | S-Mounting Medium w/ acrylic, 16 oz. bottle | 12 x 16 oz./case |

Azer-Ink Chemically Resistant Markers

- Ultra-fine tip leaves a permanent mark on slides and cassettes
- Designed specifically for histology use
- Smear-proof, waterproof, and odorless
- Resistant to chemicals such as xylene and alcohol



| Cat. No. | Description | UOM |
|----------|--|--------|
| ES-001 | Azer-Ink, chemically resistant markers | 12/box |



Hematoxylin and Eosin Staining System

Our staining system procedure, the iCON™ Hematoxylin and Eosin Staining System, has been standardized to produce effective results in detail of nuclear chromatin and cytoplasmic structures. Unlike a few other staining systems for the histology laboratory, each component is chemically engineered to complement each other, although each individual stain and reagent can function as a stand-alone.

The staining of tissue sections with our iCON™ Hematoxylin and Eosin Staining System consists of iCON™ Hematoxylin, Buffered Bluing Reagent, Clarifying Differentiator, Intensified Eosin-Y, and Intensified Eosin-Y Phloxine-B for those who prefer a brighter stain.

The stains and reagents of the iCON™ system passes vigorous analytical chemistry and performance standards to assure consistent results. Performance testing only detects how stains and reagents react and perform at the time of staining. Stain quality slide through-put and lifespan of the stains and reagents can only be determined by analytical chemistry.



| | 16 oz | 4 x 16 oz | 1 Gallon | 4 x 1 Gallon |
|---------------------------|------------|--------------|--------------|--------------|
| Hematoxylin | ES36511-16 | ES36511-4X16 | ES36511-1GAL | ES36511-4G |
| Eosin-Y Intensified | ES36531-16 | ES36531-4X16 | ES36531-1GAL | ES36531-4G |
| Eosin-Y Phloxine-B | ES36533-16 | ES36533-4X16 | ES36533-1GAL | ES36533-4G |
| Clarifying Differentiator | ES36551-16 | ES36551-4X16 | ES36551-1GAL | ES36551-4G |
| Buffered Bluing Reagent | ES36571-16 | ES36571-4X16 | ES36571-1GAL | ES36571-4G |

Clarifying Reagents

Traditional acid alcohol formulas provide crisp nuclear chromatin detail and eliminate undesired background staining. Elite Acid Rinse is a specially formulated aqueous based acetic acid rinse designed to work with our Ultra and Prestige Hematoxylin stains. All of our clarifiers are pre-mixed and ready-to-use.

| Cat. No. | Description | UOM |
|----------|-----------------------------|-------------------|
| ES36907 | Elite Acid Rinse #1, gallon | 4 x 1 gallon/case |
| ES36947 | Acid Alcohol (1%), gallon | 4 x 1 gallon/case |
| ES36937 | Acid Alcohol (0.5%), gallon | 4 x 1 gallon/case |
| ES771 | Easyview Clarifier, gallon | 4 x 1 gallon/case |





Modified Mayer's Hematoxylin

- Progressive nuclear stain requires no acid rinse
- Results in a blue stain
- Can be used when less intense staining is desired
- Eliminates need for differentiation and bluing of sections
- Non-specific background staining is minimal

| Cat. No. | Description | UOM |
|----------|--------------------------------------|-------------------|
| ES700 | Modified Mayer's Hematoxylin, 16 oz. | 4 x 16 oz./case |
| ES742 | Modified Mayer's Hematoxylin, 32 oz. | 12 x 32 oz./case |
| ES743 | Modified Mayer's Hematoxylin, gallon | 4 x 1 gallon/case |

Weigert's Iron Hematoxylin Stain Kit

Weigert's Iron hematoxylin is used in various histology and cytology stain procedures. It is supplied as two parts, Solution A and Solution B, that are mixed before use and produce blue/black nuclear detail.

| Cat. No. | Description | UOM |
|----------|---|-----------------|
| ES777 | Stain Kit (Solution A & B), 16 oz. | Each |
| ES778 | Weigert's Hematoxylin, Solution A, 16 oz. | 6 x 16 oz./case |
| ES779 | Weigert's Hematoxylin, Solution B, 16 oz. | 6 x 16 oz./case |

Eosin-Y (Alcoholic)

Eosin-Y is a fast-acting, alcoholic counterstain which provides excellent delineation of cytoplasmic components. This stain provides at least three shades of pink, showing different intensities of erythrocytes, collagen, and the cytoplasm of muscle or epithelial cells.

| Cat. No. | Description | UOM |
|----------|--|-------------------|
| ES709 | Eosin-Y stain, alcoholic, 16 oz. | 4 x 16 oz./case |
| ES710 | Eosin-Y stain, alcoholic, gallon | 4 x 1 gallon/case |
| ES711 | Eosin-Y stain, alcoholic, 2.5 gallon cube. | Each |
| ES711-32 | Eosin-Y stain, alcoholic, 32 oz. | Each |
| ES737 | Eosin-Y, intensified, 32 oz. | 6 x 32oz./case |
| ES738 | Eosin-Y, intensified, gallon | 4 x 1 gallon/case |

Saturated Lithium Carbonate Solution

Saturated lithium carbonate solution is a traditional bluing reagent used in histology staining protocols.

| Cat. No. | Description | UOM |
|----------|-------------------------------------|-------------------|
| ES735 | Saturated Lithium Carbonate, 32 oz. | 12 x 32 oz./case |
| ES736 | Saturated Lithium Carbonate, gallon | 4 x 1 gallon/case |

Harris Hematoxylin

- Ready-to-use regressive nuclear stain
- Similar to Mayer's Hematoxylin, but more stable
- Our formulation does not contain mercury
- Provides exceptional nuclear detail when used in progressive or regressive protocol

| Cat. No. | Description | UOM |
|----------|----------------------------|-------------------|
| ES701 | Harris Hematoxylin, 16 oz. | 4 x 16 oz./case |
| ES702 | Harris Hematoxylin, gallon | 4 x 1 gallon/case |

Gill Hematoxylin

- Progressive nuclear stains
- A range of concentrations are available to suit both cytology and histology protocols
- All stains are formulated to avoid precipitation

| Description | 16 oz. | UOM | Gallon | UOM |
|--------------------|--------|--------|--------|--------|
| Gill 1 Hematoxylin | ES703 | 4/case | ES704 | 4/case |
| Gill 2 Hematoxylin | ES705 | 4/case | ES706 | 4/case |
| Gill 3 Hematoxylin | ES707 | 4/case | ES708 | 4/case |

Eosin-Phloxine

Used to enhance differentiation between muscle, red blood cells, and connective tissue. Results in a bright red stain with dramatic differentiation. Eosin-phloxine stain has been formulated to provide the user with increased definition of the cytoplasmic components.

| Cat. No. | Description | UOM |
|------------|----------------------------|-------------------|
| ES722-2.5G | Eosin-Phloxine, 2.5 gallon | Each |
| ES741 | Eosin-Phloxine, 32 oz. | 12 x 32 oz./case |
| ES722 | Eosin-Phloxine, gallon | 4 x 1 gallon/case |

Bluing Reagents

- Used to blue tissue sections and enhance nuclear detail
- Can replace harmful washes or rinses that may damage tissue
- Alcoholic and aqueous formulas
- Optimal pH

| Cat. No. | Description | UOM |
|----------|--------------------------------------|-------------------|
| ES744 | Bluing Reagent, 16 oz. | 12 x 16 oz./case |
| ES745 | Bluing Reagent, gallon | 4 x 1 gallon/case |
| ES776 | Scott's Tap Water Substitute, gallon | 4 x 1 gallon/case |

Easy III™ Rapid Differential Stain

Azer Scientific offers Easy III™, a three-step rapid differential stain. These stains and fixatives are routinely used for differential staining of peripheral blood smears and bone marrow specimens.

- Extensive applicability in cytology for use in fine needle aspiration analysis
- Allows for processing of specimen to take place in 30 seconds
- Uses 1 fixative and 2 staining solutions to achieve desired results



| Cat. No. | Description | UOM |
|----------|--|-------------------|
| ES902-3 | Easy III Step Stain Set, 3 oz. bottles (Stat Pack) | Each |
| ES902-16 | Easy III Step Stain Set, 16 oz. | Each |
| ES902 | Easy III Step Stain Set, 16 oz. | 10 sets/case |
| ES906 | Easy III Fixative, 16 oz. | 12 x 16 oz./case |
| ES907 | Easy III Stain Solution I, 16 oz. | 12 x 16 oz./case |
| ES908 | Easy III Stain Solution II, 16 oz. | 12 x 16 oz./case |
| ES903 | Easy III Fixative, gallon | 4 x 1 gallon/case |
| ES904 | Easy III Stain Solution I, gallon | 4 x 1 gallon/case |
| ES905 | Easy III Stain Solution II, gallon | 4 x 1 gallon/case |

A photograph showing a collection of staining accessories: a yellow jar, a blue rack, a green dish, and a pink tray. A gloved hand is shown using a small black tool to handle a sample in the blue rack.

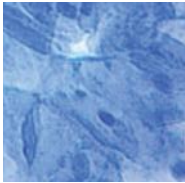
Get Results With Our Staining Accessories

Jars, Racks, Dishes & Trays

Learn more on Page 37

Methylene Blue Stain Solution

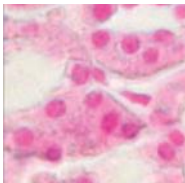
Methylene blue stain solution is a cationic stain that will stain negatively charged cell structure such as the nucleus and cytoplasmic RNA. It can be substituted as a counterstain in some histological protocols.



| Cat. No. | Description | UOM |
|----------|------------------------|-----------------|
| ES831 | Methylene Blue, 8 oz. | 4 x 8 oz./case |
| ES830 | Methylene Blue, 16 oz. | 4 x 16 oz./case |

Nuclear Red Stain Solution

Nuclear red stain solution can be used as a substitute for hematoxylin as a counterstain in IHC stain protocols. It will stain nuclear chromatin red and non-specific background tissue pink. It is also commonly used as a counterstain in Alcian Blue stain procedures.



| Cat. No. | Description | UOM |
|----------|---------------------------|------|
| ES689 | Nuclear Red Stain, 16 oz. | Each |

Schiff's Reagent

Schiff's reagent is used for the detection of polysaccharides and muco-substances, such as glycoproteins and glycolipids, in tissues. It will also stain fungal cell walls. The colorless reagent reacts with aldehydes to produce a red color. Periodic acid is used with Schiff reagent in the PAS stain protocol.



| Cat. No. | Description | UOM |
|----------|--------------------------|------|
| ES763 | Schiff's Reagent, 16 oz. | Each |
| ES763-G | Schiff's Reagent, gallon | Each |



AzerPath H&E Stainer

- Features a user-friendly operator interface with touch screen
- Compact design at only 34" wide
- Continuous loading of slides with the ability to set multiple protocols
- 2 water inlets
- Built-in fume extraction can easily connect to existing lab fume exhaust system
- Rinse water flow control programmable for one station, individually adjustable for five stations
- Up to 50 programs, with 50 steps per program



Includes: racks (2), containers with lids (24), water inlet tubes (2), drain fitting adapter (1), charcoal filter (1), power cord (1)

Specifications

Number of Stations: 30
Number of Rinse Stations: 5 (user-selectable)
Number of Load Stations: 1
Number of Unload Stations: 1
Reagent Container Volume: 350 mL
Drying Station Temperature: 40-70°C

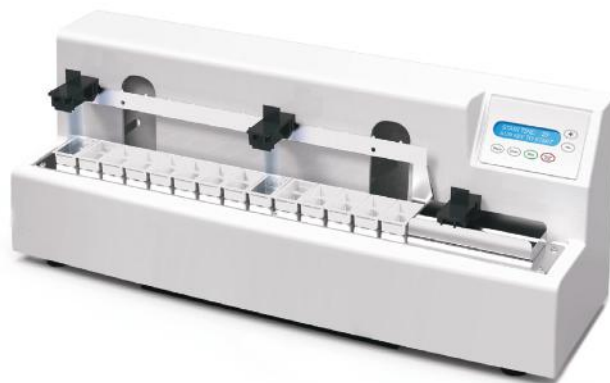
Dimensions

Width: 34"
Depth: 25"
Height: 18"
Weight: 65 lbs
Electrical: 115V

| Cat. No. | Description | UOM |
|----------|-----------------------------|------|
| ES39320 | AzerPath H&E Stainer, ST300 | Each |

AzerPath Linear Stainer

- Provides consistent staining of slides in an easy-to-use compact design
- Fits on top of most cryostats
- Ideal for Mohs techniques, special staining, and general surgical pathology frozen sections
- Continuous loading of slides
- Features a holding station for up to 16 processed slides
- Programmable station timing from 2 to 300 seconds



Includes: stainless steel tank cover (1), reagent stations (14), rinse stations (3), slide carriers (3), exit tank (1), water inlet hose (1)

Specifications

Number of Reagent Stations: 14
Number of Rinse Stations: 3 (user-selectable)
Slide Carrier Capacity: 4 slides
Reagent Container Volume: 50 mL

Dimensions

Width: 24.5"
Depth: 8.5"
Height: 11"
Weight: 35 lbs

| Cat. No. | Description | UOM |
|----------|--------------------------------|------|
| ES39300 | AzerPath Linear Stainer, ST100 | Each |

To learn more about **AzerPath** Equipment from Azer Scientific, please contact us.
Phone: 1-877-770-AZER E-Mail: Sales@AzerSci.com

Acid Fast Bacteria (AFB) Stain Kit

ES3405

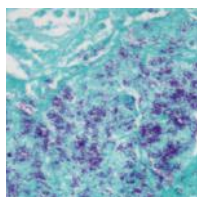
The Acid Fast Bacteria (AFB) Stain kit is intended for use in the histological visualization of Acid Fast Bacteria and Tubercle Bacilli. This kit is a rapid 15-minute procedure. The lipid capsule of the acid-fast organism takes up carbol fuchsin and resists decolorization.

Acid Fast Organisms: Bright Red

Background: Light Green

Components:

| | |
|------------------------------|--------|
| Carbol Fuchsin Solution | 125 mL |
| Acid Alcohol Solution (0.5%) | 500 mL |
| Light Green Solution | 125 mL |



Alcian Blue (pH 1.0) Stain Kit

ES3399

The Alcian Blue (pH 1.0) Stain Kit is intended for use in the histological visualization of strongly sulfated mucosubstances.

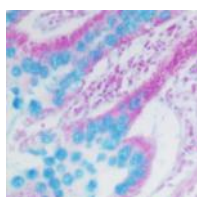
Strongly Sulfated Mucosubstances: Blue

Nuclei: Red

Background: Pink

Components:

| | |
|----------------------|--------|
| Alcian Blue, pH 1.0 | 250 mL |
| Sarfanin O Solution | 250 mL |
| Acetic Acid Solution | 500 mL |



Alcian Blue (pH 2.5) Stain Kit

ES4801

The Alcian Blue (pH 2.5) Stain Kit is intended for use in the histological visualization of sulfated and carboxylated acid mucopolysaccharides and sulfated and carboxylated sialomucins (glycoproteins).

Acidic Sulfated Mucosubstances: Blue

Hyaluronic Acid: Blue

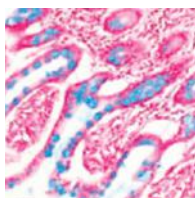
Sialomucins: Blue

Nuclei: Red

Background: Pink

Components:

| | |
|----------------------|--------|
| Alcian Blue, pH 2.5 | 250 mL |
| Sarfanin O Solution | 250 mL |
| Acetic Acid Solution | 500 mL |



Amyloid Stain Kit

ES4802

The Amyloid Stain Kit (Congo Red) is intended for use in the histological visualization of amyloid in tissue sections.

Examination under a polarizing microscope results in green birefringence of amyloid.

Amyloid: Red to Pink

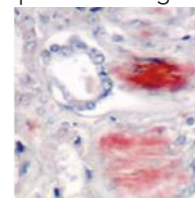
Erythrocytes: Light Orange

Eosinophil Granules: Orange to Red

Nuclei: Blue

Components:

| | |
|----------------------|--------|
| Congo Red Solution | 500 mL |
| Hematoxylin, Mayer's | 500 mL |
| Bluing Reagent | 500 mL |



Blue Feulgen DNA Ploidy Analysis Stain Kit

ES36984

The Blue Feulgen Stain Kit is designed to stain deoxyribonucleic acid (DNA) in cell nuclei. After staining, the cells may be quantitatively evaluated for DNA content visually or using commercially available imaging systems. The amount of stain color developed is directly proportional to the amount of DNA present in the stained nuclei. This kit is designed for cytological specimens prepared from cytopins, smears, cell imprints, disaggregated tissue, or whole tissue.

DNA in cell nuclei: Blue

Cytoplasm: Transparent

Components:

| | |
|--------------------|-------------|
| Blue Feulgen Stain | 500 mL (x2) |
| Decolorizer | 10 vials |

Bielschowsky's Stain Kit (Modified)

ES4826

The Bielschowsky's Stain Kit (Modified) is designed for the histological visualization of nerve fibers, neurofibrillary tangles, and senile plaques in Alzheimer disease.

Axons: Black

Neurofibrillary Tangles: Black

Senile Plaques: Black

Nucleoli: Dark Brown

Background: Yellow to Light Brown

Components:

| | |
|---------------------------------------|-------------|
| Silver Nitrate Solution (20%) | 500mL |
| Formalin Solution (20%) | 8mL Dropper |
| Citric Acid Solution (Bielschowsky's) | 8mL Dropper |
| Nitric Acid Solution (Bielschowsky's) | 8mL Dropper |
| Sodium Thiosulfate Solution (5%) | 125mL |



Calcium Stain Kit (Modified von Kossa)

ES4803

The Calcium Stain Kit (Modified Von Kossa) is intended for use in the histological visualization of calcium deposits in paraffin or frozen sections.

Calcium in mass deposits: Black

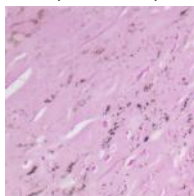
Calcium in dispersed deposits: Gray

Nuclei: Red

Cytoplasm: Light Pink

Components:

| | |
|----------------------------------|--------|
| Silver Nitrate Solution (5%) | 125 mL |
| Sodium Thiosulfate Solution (5%) | 125 mL |
| Nuclear Fast Red Solution | 125 mL |



Colloidal Iron Stain Kit

ES4804

The Colloidal Iron Stain Kit is designed for the histological visualization of acid mucopolysaccharides.

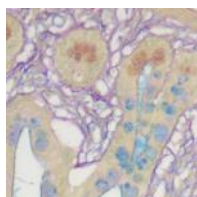
Acidic Sulfated Mucosubstances: Bright Blue

Hyaluronic Acid: Blue

Collagen: Shades of Red

Components:

| | |
|--------------------------------------|--------|
| Acetic Acid Solution (12%) | 500 mL |
| Hydrochloric Acid Solution (1N) | 125 mL |
| Potassium Ferrocyanide Solution (3%) | 125 mL |
| Colloidal Iron Stock Solution | 125 mL |
| Van Gieson's Solution | 125 mL |



Combined Eosinophil-Mast Cell Stain Kit

ES4805

The Combined Eosinophil-Mast Cell Stain Kit (C.E.M.) is intended for simultaneous visualization of eosinophils and mast cells.

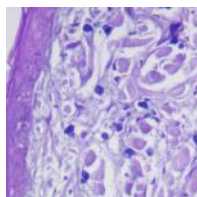
Mast Cells: Bright Blue

Eosinophils: Bright Red

Nuclei: Blue

Components:

| | |
|------------------------|--------|
| Astra Blue Solution | 125 mL |
| Vital New Red Solution | 125 mL |
| Hematoxylin, Mayer's | 125 mL |



Copper Stain Kit (For Microwave)

ES4806

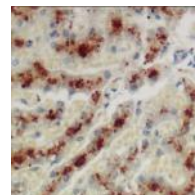
The Copper Stain Kit (For Microwave) is intended for the demonstration of copper deposits in tissue sections.

Copper Deposits: Light Brown or Red

Nuclei: Blue

Components:

| | |
|-------------------------------------|------------|
| Rhodanine Solution (Stock) | 30 mL |
| Acetate Buffer Solution, pH 8.0 | 2 x 500 mL |
| Hematoxylin, Mayer's (Lillie's Mod) | 125 mL |



Elastic Stain Kit (Modified Verhoff's)

ES4807

The Elastic Stain Kit is intended for use in histological demonstration of elastin in tissue sections. Demonstration of elastic tissue is useful in cases of emphysema (atrophy of elastic tissue), arteriosclerosis (thinning and loss of elastic fibers) and various other vascular diseases.

Elastic Fibers: Black to Blue/Black

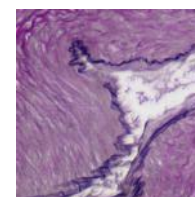
Nuclei: Blue to Black

Collagen: Red

Muscle & Other: Yellow

Components:

| | |
|---|--------|
| Hematoxylin Solution (5%) | 250 mL |
| Ferric Chloride (10%, aqueous) | 125 mL |
| Lugol's Iodine Solution | 125 mL |
| Ferric Chloride (2%) Differentiating Sol. | 125 mL |
| Sodium Thiosulfate Solution | 125 mL |
| Van Gieson's Solution | 125 mL |



Fite's Stain Kit (Leprosy & Nocardia Procedures)

ES4808

The Fite's Stain Kit (For Leprosy) is intended for use in the histological visualization of mycobacterium leprae (leprosy).

Lepra bacillus: Red

Nocardia: Red

Background: Blue

Compopents:

| | |
|----------------------------|--------|
| Xylene-Peanut Oil Solution | 125 mL |
| Carbol Fuchsin Solution | 125 mL |
| Acid Alcohol Solution (1%) | 500 mL |
| Methylene Blue Solution | 125 mL |

Fontana Masson Stain Kit (Argentaffin Cells & Melanin)

ES4809

The Fontana-Masson Stain Kit is intended for use in the histological visualization of Argentaffin and Melanin in paraffin or frozen sections.

Argentaffin Cells: Black

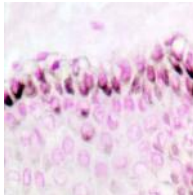
Melanin: Black

Nuclei: Red

Cytoplasm: Light Pink

Components:

| | |
|----------------------------------|----------|
| Gold Chloride Solution (0.2%) | 125 mL |
| Silver Nitrate Solution (10%) | 5 x 9 mL |
| Sodium Thiosulfate Solution (5%) | 125 mL |
| Nuclear Fast Red Solution | 125 mL |



Giemsa Stain Kit (May-Grunwald)

ES3401

The Giemsa Stain Kit (May-Grunwald) is intended for use in the visualization of cells present in hematopoietic tissues and certain microorganisms. This kit may be used on formalin-fixed, paraffin-embedded or frozen sections.

Nuclei: Blue/Violet

Cytoplasm: Light Blue

Collagen: Pale Pink

Muscle Fibers: Pale Pink

Erythrocytes: Gray, Yellow, Pink

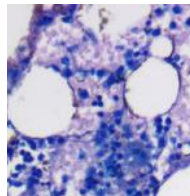
Rickettsia: Reddish-Purple

Helicobacter Pylori: Blue

Mast Cells: Dark Blue, Red Granules

Components:

| | |
|-----------------------------------|--------|
| May-Grunwald Solution | 500 mL |
| Giemsa Stock Solution | 500 mL |
| Phosphate Buffer Solution, pH 6.8 | 500 mL |



GMS Stain Kit

ES3397

The Modified Gomori Methenamine-Silver Nitrate Stain (GMS Stain Kit) is intended for use in the histological visualization of fungi, basement membrane, and some opportunistic organisms such as *Pneumocystis carinii*. *Pneumocystis carinii* is an opportunistic pathogen that causes severe pulmonary disease in humans, dogs, rats, mice, and other vertebrate species with acquired, induced, or inherited immune deficiency syndromes. In addition, this procedure will demonstrate *Actinomyces* and related species, *Nocardia* asteroids, and certain encapsulated bacteria.

Fungi: Black

P. Carinii: Black

Mucin: Gray

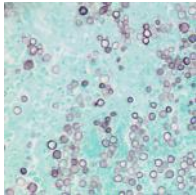
Mycelia (inner): Rose

Hyphae (inner): Rose

Background: Light Green

Components:

| | |
|----------------------------------|--------|
| Silver Nitrate Solution | 125 mL |
| Methenamine Solution | 125 mL |
| Gold Chloride Solution (0.2%) | 125 mL |
| Borax Solution | 15 mL |
| Sodium Bisulfite Solution | 125 mL |
| Chromic Acid Solution | 125 mL |
| Sodium Thiosulfate Solution (5%) | 125 mL |
| Light Green Solution | 125 mL |



Gram Stain Kit

ES3404

The Gram Stain Kit is intended for the demonstration and differentiation of Gram-positive and Gram-negative bacteria.

Gram Positive Bacteria: Blue

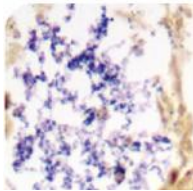
Gram Negative Bacteria: Red

Other Tissue: Yellow

Nuclei: Red

Components:

| | |
|-----------------------------|--------|
| Gentian Violet Solution | 125 mL |
| Lugol's Iodine Solution | 125 mL |
| Gram's Decolorizer Solution | 125 mL |
| Carbol Fuchsin Solution | 125 mL |
| Tartrazine Solution | 125 mL |





Gram Stain Kit (Modified Brown & Brenn)

ES4822

The Modified Brown and Brenn Gram stain Kit is intended for the demonstration and differentiation of Gram-positive and Gram-negative bacteria.

Gram Positive Bacteria: Blue

Gram Negative Bacteria: Red

Other Tissue: Slightly Yellow - Pink

Nuclei: Red

Components:

| | |
|---------------------------------------|--------|
| Gentian Violet Solution | 125 mL |
| Lugol's Iodine Solution | 125 mL |
| Gram's Decolorizer Solution | 125 mL |
| Safranin-O Solution | 125 mL |
| Picric Acid - Acetone Solution (0.1%) | 125 mL |

H. Pylori Rapid Stain Kit

ES4811

The H. Pylori Rapid Stain Kit is designed for demonstrating Helicobacter Pylori infected tissue. Kit may be used on formalin fixed, paraffin-embedded tissue, or frozen sections.

Helicobacter Pylori: Blue

Mucin: Yellow

Background: Light Blue

Components:

| | |
|-------------------------------|----------|
| Periodic Acid Solution | 500 mL |
| Sodium Metabisulfite Solution | 125 mL |
| Alcian Yellow Solution | 125 mL |
| Toluidine Blue Solution | 2 x 6 mL |
| Sodium Hydroxide Solution | 8 mL |



Hepatitis B Stain Kit

ES4810

The Hepatitis B Stain Kit is intended for use in the histological visualization of Hepatitis B surface antigen (HBsAg). This kit may be used on formalin-fixed, paraffin-embedded or frozen sections.

HBsAg: Dark Brown

Components:

| | |
|--------------------------------------|--------|
| Potassium Permanganate Solution (5%) | 30 mL |
| Sulfuric Acid Solution (3%) | 30 mL |
| Oxalic Acid Solution (2%) | 125 mL |
| Orcein Solution | 125 mL |
| Differentiating Solution | 125 mL |

Iron Stain Kit

ES3402

The Iron Stain Kit is intended for use in the detection of ferric iron in tissues, blood smears, or bone marrow smears. Ferric iron is normally found in small amounts in bone marrow and the spleen. Abnormally large deposits may be seen in hemochromatosis and hemosiderosis. This product is based on the Prussian Blue reaction in which ionic iron reacts with acid ferrocyanide producing a blue color.

Iron: Bright Blue

Nuclei: Red

Background: Pink

Components:

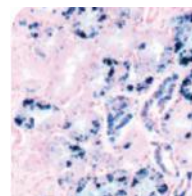
| | |
|---------------------------------|--------|
| Potassium Ferrocyanide Solution | 500 mL |
| Hydrochloric Acid Solution (2%) | 500 mL |
| Nuclear Fast Red Solution | 125 mL |

Bone or Blood Smears

Sideroblasts: These are nucleated erythrocytes containing at least one small blue granule. If the blue granules surround the nucleus, the cell is a ringed sideroblast.

Siderocytes: These are non-nucleated erythrocytes containing at least one blue granule.

Reticuloendothelial Iron: Usually seen as blue particles on the marrow smear or as blue particles in the cytoplasm or phagocytic cells.



Luxol Fast Blue Stain Kit

ES4812

The Luxol Fast Blue Stain Kit is designed for staining myelin/myelinated axons and Nissl substance on formalin fixed, paraffin-embedded tissue as well as frozen tissue. This product is used for identifying the basic neuronal structure in brain or spinal cord sections.

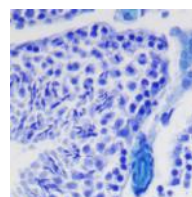
Myelinated Fibers: Blue

Nissl Substance: Violet

Nerve Cells: Violet

Components:

| | |
|------------------------------------|--------|
| Cresyl Echt Violet Solution | 125 mL |
| Luxol Fast Blue Solution | 125 mL |
| Lithium Carbonate Solution (0.05%) | 500 mL |
| Alcohol, Reagent (70%) | 500 mL |



Movat Pentachrome Stain Kit

ES4828

The Movat Pentachrome Stain Kit (Modified Russel-Movat) is intended for use in histological demonstration of collagen, elastin, muscle, mucin and fibrin in tissue sections. This procedure is useful for studying heart, blood vessels, and vascular disease.

Elastic Fibers: Black to Blue/Black

Nuclei: Blue/Black

Collagen: Yellow to Red

Reticular Fibers: Yellow

Mucin: Bright Blue

Fibrin: Bright Red

Muscle: Red

Components:

| | |
|---|-------|
| Hematoxylin Solution (5%) | 250mL |
| Ferric Chloride Solution (10%) | 125mL |
| Lugol's Iodine Solution | 125mL |
| Ferric Chloride (2%) Differentiating Solution | 125mL |
| Sodium Thiosulfate Solution (5%) | 125mL |
| Acetic Acid Solution (3%) | 125mL |
| Acetic Acid Solution (1%) | 250mL |
| Biebrich Scarlet – Acid Fuchsin Solution | 125mL |
| Phosphotungstic Acid Solution (5%) | 250mL |
| Metanil Yellow Solution | 125mL |

Mucicarmine Stain Kit (Modified Southgate's)

ES4813

Mucicarmine Stain Kit (Modified Southgate's) is intended for use in the histological visualization of acid mucopolysaccharides in tissue sections. This product is useful in distinguishing mucin negative undifferentiated squamous cell lesions from mucin positive adenocarcinomas. In addition, this product will stain the mucopolysaccharide capsule of *Cryptococcus neoformans*.

Mucin: Pink/Red

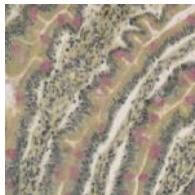
Capsule of *Cryptococcus*: Red

Nuclei: Black/Blue

Other tissue components: Yellow

Components:

| | |
|----------------------|--------|
| Hematoxylin, Mayer's | 125 mL |
| Bluing Reagent | 125 mL |
| Mucicarmine Solution | 125 mL |
| Tartrazine Solution | 125 mL |



Oil Red O Stain Kit (For Fat)

ES4814

The Oil Red O Stain Kit is intended for use in the histological visualization of fat cells and neutral fat. This kit may be used ONLY on frozen tissue sections, fresh smears, or touch preps.

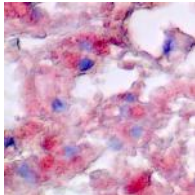
Fat Cells: Red

Neutral Fat: Red

Nuclei: Blue

Components:

| | |
|----------------------|--------|
| Propylene Glycol | 500 mL |
| Oil Red O Solution | 125 mL |
| Hematoxylin, Mayer's | 125 mL |



PAS Stain Kit (Modified Lillie's)

ES3400

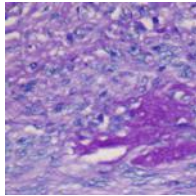
The Periodic Acid Schiff (PAS) Stain Kit is intended for use in histological demonstration of lymphocytes and mucopolysaccharides. The staining patterns of the lymphocytes are helpful in making therapeutic decisions in established cases of lymphocytic leukemia. The PAS reaction tissue sections are useful for the demonstration of mucopolysaccharides. PAS staining may also be used for the demonstration of fungal organisms in tissue sections.

PAS Positive Material: Magenta

Nuclei: Black/Blue

Components:

| | |
|------------------------|--------|
| Periodic Acid Solution | 250 mL |
| Schiff's Solution | 250 mL |
| Hematoxylin, Mayer's | 125 mL |
| Bluing Reagent | 125 mL |





PAS Stain Kit (For Fungus)

ES4815

The Periodic Acid Schiff (PAS) for Fungus Stain Kit is intended for use in histological demonstration of fungal organisms in tissue sections. The PAS reaction is also useful in the demonstration of lymphocytes and mucopolysaccharides. The staining patterns of the lymphocytes are helpful in making therapeutic decisions in established cases of lymphocytic leukemia.

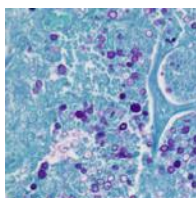
Fungal Organisms: Magenta

PAS Positive Material: Magenta

Nuclei: Black/Blue

Components:

| | |
|------------------------|--------|
| Periodic Acid Solution | 250 mL |
| Schiff's Solution | 250 mL |
| Light Green Solution | 125 mL |



PAS Stain Kit (Diastase)

ES4825

The Periodic Acid Schiff (PAS) Diastase Stain Kit is intended for use in the visualization of lymphocytes and mucopolysaccharides. The α -Amylase digestion step effectively removes glycogen to allow a visual comparison of digested and undigested slides. The PAS demonstrates mucopolysaccharides in tissue sections.

PAS Positive Material: Magenta

Nuclei: Blue

Components:

| | |
|-----------------------------|---------|
| Alpha-Amylase Solution (1%) | 250mL |
| Periodic Acid Solution | 250mL |
| Schiff's Solution | 250mL |
| Hematoxylin, Mayer's | 2x125mL |
| Bluing Reagent | 2x125mL |

Pneumocystis Stain Kit

ES4816

The Pneumocystis Stain Kit will demonstrate Pneumocystis carinii in cytology smears and paraffin embedded or frozen tissue sections.

Pneumocystis carinii: Violet/Purple

Connective Tissue: Blue/Green

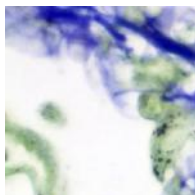
Erythrocytes: Yellow

Mucin: Rose/Purple

Cartilage: Rose

Components:

| | |
|------------------------------------|-------|
| Cresyl Echt Violet Solution (0.1%) | 125mL |
| Naphthol Yellow S Solution | 125mL |
| Staining Jar | 60mL |



Precision Reticulum Stain Kit

ES3403

The Precision Reticulum Stain Kit is intended for use in histological demonstration of reticular fibers. The main function of reticular fibers is to provide support. They are normally found throughout the body, particularly in liver, lymph node, spleen and kidney. Ammoniacal silver stains are the most commonly used methods for demonstration of reticular fibers.

Reticulum: Black

Nuclei: Red

Components:

| | |
|--|-----------|
| Potassium Permanganate Solution (1%) | 125 mL |
| Potassium Metabisulfite Solution (3%)- | 125 mL |
| Ferric Ammonium Sulfate Solution (3%) | 125 mL |
| Formalin Solution (20%) | 125 mL |
| Gold Chloride Solution (0.1%) | 125 mL |
| Sodium Thiosulfate Solution (5%) | 125 mL |
| Nuclear Fast Red Solution | 125 mL |
| Sodium Hydroxide Solution (3%) | 125 mL |
| Silver Nitrate Solution (10%) | 5 x 10 mL |

PTAH Stain Kit (For Microwave)

ES4817

The P.T.A.H. Stain Kit for Microwave is intended for use in the histological visualization of collagen, striated muscle, and glial fibers without using Zenker's Fixative with Mercuric Chloride as a mordant. This kit may be used on formalin-fixed, paraffin-embedded, or frozen sections.

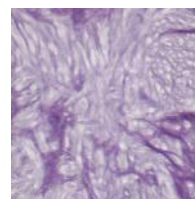
Fibrin, Striated Muscle, Glial Fibers: Blue

Collagen: Brownish/Red

Nuclei: Blue

Components:

| | |
|------------------------------|--------|
| Zinc Chloride Solution (10%) | 500 mL |
| Ferric Ammonium Sulfate | 125 mL |
| P.T.A.H. Solution | 125 mL |



Reticulum Stain Kit (Modified Gomori's)

ES4818

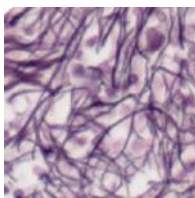
The Reticulum Stain Kit (Modified Gomori's) is intended for use in histological demonstration of reticular fibers. The main function of reticular fibers is to provide support. They are normally found throughout the body, particularly in the liver, lymph node, spleen and kidney. Ammoniacal silver strains are the most commonly used methods for demonstration of reticular fibers.

Reticulum: Black

Nuclei: Red

Components:

| | |
|----------------------------------|--------|
| Potassium Permanganate Solution | 125 mL |
| Sulfuric Acid Solution (1N) | 15 mL |
| Potassium Metabisulfite Solution | 125 mL |
| Ferric Ammonium Sulfate Solution | 125 mL |
| Silver Nitrate Solution (10%) | 65 mL |
| Formalin Solution (20%) | 125 mL |
| Gold Chloride Solution (0.2%) | 125 mL |
| Sodium Thiosulfate Solution (5%) | 125 mL |
| Nuclear Fast Red Solution | 125 mL |



Trichrome Stain Kit (Modified Gomori's)

ES4820

The Trichrome Stain Kit (Modified Gomori's) is intended for use in the histological visualization of collagenous connective tissue fibers in tissue sections.

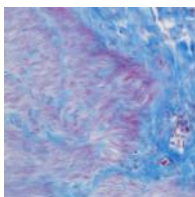
Collagen: Blue

Muscle Fibers: Red

Nuclei: Black/Blue

Components:

| | |
|-----------------------------|--------|
| Bouin's Fluid | 125 mL |
| Weigert's Iron, Hematoxylin | 250 mL |
| Trichrome Stain | 125 mL |
| Acetic Acid Solution | 250 mL |
| Acid Alcohol Solution | 250 mL |



Trichrome Stain Kit (Modified Masson's)

ES3398

The Trichrome Stain Kit (Modified Masson's) is intended for use in the histological visualization of collagenous connective tissue fibers in tissue sections. This kit may be used on formalin-fixed, paraffin-embedded, or frozen sections.

Collagen: Blue

Muscle Fibers: Red

Nuclei: Black/Blue

Components:

| | |
|---|--------|
| Bouin's Fluid- | 125 mL |
| Weigert's Iron, Hematoxylin (A) | 125 mL |
| Weigert's Iron, Hematoxylin (B) | 125 mL |
| Biebrich Scarlet/Acid Fuchsin Solution | 125 mL |
| Phosphomolybdic/Phosphotungstic Acid Sol. | 125 mL |
| Aniline Blue Solution | 125 mL |
| Acetic Acid Solution (1%) | 125 mL |

Warthin-Starry Stain Kit

ES4821

The Warthin-Starry Stain Kit is intended for use in the visualization of Spirochetes, Helicobacter pylori, Legionella pneumophila, and Cat Scratch Fever bacteria. This kit may be used on formalin-fixed, paraffin-embedded, or frozen sections.

Helicobacter pylori: Black

Legionella pneumophila: Black

Spirochetes: Black

Cat Scratch Fever Bacteria: Black

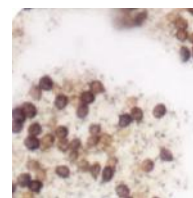
Klebsiella: Brown/Black

Nuclei: Brown

Background: Yellow

Components:

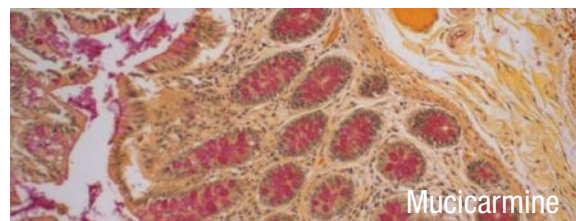
| | |
|--|-----------|
| Spirochete Sensitizer | 125 mL |
| Gelatin (4%), Acidulated | 2 x 65 mL |
| Silver Nitrate Solution (0.5%), Acidulated | 125 mL |
| Hydroquinone Solution (0.1%), Acidulated | 2 x 30 mL |
| Silver Nitrate Solution (2%), Acidulated | 30 mL |





Tissue Control Slides

Azer Scientific's control slides are carefully prepared with paraffin embedded human tissue sections containing specific characteristics that are used for monitoring staining procedures in pathology laboratories. Each package contains 10 or 99 unstained Unifrost® microscope slides. One additional slide is stained with the proper procedure to demonstrate and validate the expected results.



Mucicarmine

| Description | 10/Pack Cat No. | 10/Box UOM | 100/Box Cat. No. | 100/Box UOM |
|-------------------------|-----------------|-----------------------------|------------------|-----------------------------|
| Acid Fast Bacteria | ESCS-102 | 10 unstained, 1 stained/box | ESCS-102-100 | 99 unstained, 1 stained/box |
| Pneumocystis | ESCS-103 | 10 unstained, 1 stained/box | ESCS-103-100 | 99 unstained, 1 stained/box |
| Alcian Blue | ESCS-104 | 10 unstained, 1 stained/box | ESCS-104-100 | 99 unstained, 1 stained/box |
| Amyloid | ESCS-106 | 10 unstained, 1 stained/box | ESCS-106-100 | 99 unstained, 1 stained/box |
| Argentaffin | ESCS-107 | 10 unstained, 1 stained/box | ESCS-107-100 | 99 unstained, 1 stained/box |
| Bile | ESCS-109 | 10 unstained, 1 stained/box | ESCS-109-100 | 99 unstained, 1 stained/box |
| Elastic Tissue | ESCS-111 | 10 unstained, 1 stained/box | ESCS-111-100 | 99 unstained, 1 stained/box |
| Fungi-PAS | ESCS-113 | 10 unstained, 1 stained/box | ESCS-113-100 | 99 unstained, 1 stained/box |
| Fungi-GMS Silver Strain | ESCS-114 | 10 unstained, 1 stained/box | ESCS-114-100 | 99 unstained, 1 stained/box |
| Giemsa | ESCS-115 | 10 unstained, 1 stained/box | ESCS-115-100 | 99 unstained, 1 stained/box |
| Glycogen | ESCS-116 | 10 unstained, 1 stained/box | ESCS-116-100 | 99 unstained, 1 stained/box |
| Gram Organism | ESCS-117 | 10 unstained, 1 stained/box | ESCS-117-100 | 99 unstained, 1 stained/box |
| Iron | ESCS-118 | 10 unstained, 1 stained/box | ESCS-118-100 | 99 unstained, 1 stained/box |
| Luxol Fast Blue | ESCS-120 | 10 unstained, 1 stained/box | ESCS-120-100 | 99 unstained, 1 stained/box |
| Massons | ESCS-121 | 10 unstained, 1 stained/box | ESCS-121-100 | 99 unstained, 1 stained/box |
| Melanin | ESCS-122 | 10 unstained, 1 stained/box | ESCS-122-100 | 99 unstained, 1 stained/box |
| Mucicarmine | ESCS-124 | 10 unstained, 1 stained/box | ESCS-124-100 | 99 unstained, 1 stained/box |
| Periodic Acid | ESCS-125 | 10 unstained, 1 stained/box | ESCS-125-100 | 99 unstained, 1 stained/box |
| P.T.A.H | ESCS-126 | 10 unstained, 1 stained/box | ESCS-126-100 | 99 unstained, 1 stained/box |
| Reticulum | ESCS-127 | 10 unstained, 1 stained/box | ESCS-127-100 | 99 unstained, 1 stained/box |
| Trichrome | ESCS-129 | 10 unstained, 1 stained/box | ESCS-129-100 | 99 unstained, 1 stained/box |
| Fontana Massons | ESCS-172 | 10 unstained, 1 stained/box | ESCS-172-100 | 99 unstained, 1 stained/box |

IHC Tissue Control Slides

Azer Scientific's line of IHC control slides are designed specifically for quality control of immunohistochemistry staining protocols. Each package includes 10 or 99 unstained slides and one stained slide (exception: ESCS-170 which contains 10 negative and 10 positive).



| Description | 10/Box Cat No. | 10/Box UOM | 100/Box Cat. No. | 100/Box UOM |
|-----------------------------------|----------------|------------------------------|------------------|-----------------------------|
| Helicobacter/H. Pylori | ESCS-130 | 10 unstained, 1 stained/box | ESCS-130-100 | 99 unstained, 1 stained/box |
| PIN-4 | ESCS-170 | 10 negative, 10 positive/box | - | - |
| PSA (Prostate Specific Antigen) | ESCS-174 | 10 unstained, 1 stained/box | ESCS-174-100 | 99 unstained, 1 stained/box |
| ER | ESCS-175 | 10 unstained, 1 stained/box | ESCS-175-100 | 99 unstained, 1 stained/box |
| PR | ESCS-176 | 10 unstained, 1 stained/box | ESCS-176-100 | 99 unstained, 1 stained/box |
| Ki67 | ESCS-178 | 10 unstained, 1 stained/box | ESCS-178-100 | 99 unstained, 1 stained/box |
| Normal Cervix | ESCS-179 | 10 unstained, 1 stained/box | - | - |
| HPV | ESCS-180 | 10 unstained, 1 stained/box | ESCS-180-100 | 99 unstained, 1 stained/box |
| Napsin A | ESCS-187 | 10 unstained, 1 stained/box | ESCS-187-100 | 99 unstained, 1 stained/box |
| CD30 | ESCS-188 | 10 unstained, 1 stained/box | ESCS-188-100 | 99 unstained, 1 stained/box |
| GCDFF-15 | ESCS-189 | 10 unstained, 1 stained/box | ESCS-189-100 | 99 unstained, 1 stained/box |
| EMA (Epithelial Membrane Antigen) | ESCS-191 | 10 unstained, 1 stained/box | ESCS-191-100 | 99 unstained, 1 stained/box |
| CD21 | ESCS-192 | 10 unstained, 1 stained/box | ESCS-192-100 | 99 unstained, 1 stained/box |
| Alpha-Fetoprotein | ESCS-193 | 10 unstained, 1 stained/box | ESCS-193-100 | 99 unstained, 1 stained/box |
| Calcitonin | ESCS-194 | 10 unstained, 1 stained/box | ESCS-194-100 | 99 unstained, 1 stained/box |
| GMS stain | ESCS-195 | 10 unstained, 1 stained/box | - | - |

IHC Pre-Procedure Solutions

| Cat. No. | Description | UOM |
|----------|---|------|
| ES35911 | Pepsin, stabilized solution, 60 mL | Each |
| ES35912 | Pepsin, stabilized solution, 125 mL | Each |
| ES35937 | Michel's Transport Fluid, 10 L | Each |
| ES35938 | Michel's Transport Fluid, 20 L | Each |
| ES35935 | Michel's Transport Fluid, 500 mL | Each |
| ES35936 | Michel's Transport Fluid, 1000 mL | Each |
| ES35947 | Michel's Transport Wash Buffer, 10 L | Each |
| ES35948 | Michel's Transport Wash Buffer, 20 L | Each |
| ES35945 | Michel's Transport Wash Buffer, 500 mL | Each |
| ES35946 | Michel's Transport Wash Buffer, 1000 mL | Each |

IHC Reagents & Buffers

For more sizes, please visit our website.

| Cat. No. | Description | UOM |
|----------|---|------|
| ES35505 | Primary Antibody Diluent (Phosphate, Green), 500 mL | Each |
| ES35515 | Primary Antibody Diluent (Tris, Green), 500 mL | Each |
| ES35522 | Citrate Buffer (10x), pH 6.0, 125 mL | Each |
| ES35525 | Citrate Buffer (10x), pH 6.0, 500 mL | Each |
| ES35526 | Citrate Buffer (10x), pH 6.0, 1000 mL | Each |
| ES35535 | Citrate Plus (10x) HIER Solution, 500 mL | Each |
| ES35538 | Citrate Plus (10x) HIER Solution, 1000 mL | Each |
| ES35615 | Phosphate Buffered Saline w/ Tween 20 (20x), pH 7.6, 500 mL | Each |
| ES35571 | Permanent Red Kit (for Alkaline Phosphatase), 61 mL | Each |
| ES35625 | Tris Buffered Saline w/ Tween 20 (20x), pH 7.4, 500 mL | Each |
| ES35695 | Tris Buffered Saline plus Tween 20 (10x) pH 7.5, 500 mL | Each |
| ES35698 | Tris Buffered Saline plus Tween 20 (10x) pH 7.5, 1000 mL | Each |
| ES35593 | Trypsin, stabilized solution, 155 mL | Each |
| ES35635 | Tween 20, 500 mL | Each |
| ES35545 | Blocking Buffer, 500 mL | Each |
| ES35559 | DAB Stain Removal Kit, 500 mL | Each |
| ES35676 | EDTA- Saline Buffer (10X Concentrate), pH 8.0, 500 mL | Each |
| ES35678 | EDTA- Saline Buffer (10X Concentrate), pH 8.0, 500 mL | Each |
| ES35686 | Peroxide Block for Image Analysis, 500 mL | Each |
| ES35688 | Peroxide Block for Image Analysis, 1000 mL | Each |

IHC Stains

We offer a selection of individual stains and stain packs to accommodate the needs of your lab. Instructions for Use and full product descriptions can be found on our website.

| Cat. No. | Description | UOM |
|------------|---|------|
| ES35311 | UltraTek Horseradish Peroxidase, 8 mL | Each |
| ES35312 | UltraTek Horseradish Peroxidase, 15 mL | Each |
| ES35314 | UltraTek Horseradish Peroxidase, 125 mL | Each |
| ES35316 | UltraTek Horseradish Peroxidase, 500 mL | Each |
| ES35318 | UltraTek Horseradish Peroxidase, 1000 mL | Each |
| ES35331 | UltraTek Anti-Polyvalent, 8 mL | Each |
| ES35332 | UltraTek Anti-Polyvalent, 15 mL | Each |
| ES35334 | UltraTek Anti-Polyvalent, 125 mL | Each |
| ES35336 | UltraTek Anti-Polyvalent, 500 mL | Each |
| ES35338 | UltraTek Anti-Polyvalent, 1000 mL | Each |
| ES35351 | CRF Anti-Polyvalent HRP Polymer, 8 mL | Each |
| ES35352 | CRF Anti-Polyvalent HRP Polymer, 15 mL | Each |
| ES35354 | CRF Anti-Polyvalent HRP Polymer, 125 mL | Each |
| ES35356 | CRF Anti-Polyvalent HRP Polymer, 500 mL | Each |
| ES35358 | CRF Anti-Polyvalent HRP Polymer, 1000 mL | Each |
| ES35362-70 | UltraTek HRP Anti-Polyvalent, 70 slides | Each |
| ES35372 | DAB Chromagen/Substrate Bulk Pack, high contrast, 530 mL | Each |
| ES35374 | DAB Chromagen/Substrate Bulk Pack, high contrast, 1060 mL | Each |
| ES35391-1 | UltraTek Alk-Phos Anti-Polyvalent Lab Pack, 1250 slides | Each |
| ES35391-5 | UltraTek Alk-Phos Anti-Polyvalent Lab Pack, 5000 slides | Each |
| ES35391-10 | UltraTek Alk-Phos Anti-Polyvalent Lab Pack, 10000 slides | Each |
| ES35393-1 | UltraTek HRP Anti-Polyvalent Lab Pack, 1250 slides | Each |
| ES35393-5 | UltraTek HRP Anti-Polyvalent Lab Pack, 5000 slides | Each |
| ES35393-10 | UltraTek HRP Anti-Polyvalent Lab Pack, 10000 slides | Each |
| ES35395-1 | UltraTek HRP Anti-Mouse Lab Pack, 1250 slides | Each |
| ES35395-5 | UltraTek HRP Anti-Mouse Lab Pack, 5000 slides | Each |

Slide Hybridization System for IHC

- Ideal for performing IHC and In Situ hybridization reactions
- 12 slide capacity
- Digital microprocessor allows for control over three timed segments
- Includes calibration mode to ensure accuracy
- Leveling feet provide stability
- Features two wells for protocols requiring humidity
- Dimensions: 17" x 10" x 4"
- Temperature Range: Ambient +5°C to 100°C

| Cat. No. | Description | UOM |
|----------|------------------------------------|------|
| ES39521 | Slide Hybridization System for IHC | Each |





Slide Staining Jars

- Slide holder holds 12 slides and features a handle for safe and easy dipping of samples
- Each staining jar has a stable base allowing for less reagent use (about 80 mL)
- Slide staining kit includes 5 jars (one of each color), and 1 slide holder. Additional kit available with metal work station rack, which is also available separately.



| Cat. No. | Description | UOM |
|----------|--|--------|
| ES4400AS | Slide Staining Kit, 5 jars and 1 slide holder | Each |
| ES4400KT | Slide Staining Jars Kit, 6 jars (1 of each and 2 white), 1 slide holder, 1 metal work station rack | Each |
| ES4400B | Slide Staining Jar, blue | 6/case |
| ES4400G | Slide Staining Jar, green | 6/case |
| ES4400P | Slide Staining Jar, pink | 6/case |
| ES4400Y | Slide Staining Jar, yellow | 6/case |
| ES4400W | Slide Staining Jar, white | 6/case |
| ES4401 | Slide holder | 6/case |
| ES4400RK | Metal work station rack | Each |

Glass Coplin Jar

Each coplin jar encompasses wide, flat, and round bases. Able to hold up to 10 slides, back-to-back.

Dimensions: 3" high, 1.2" internal diameter



| Cat. No. | Description | UOM |
|----------|------------------|------|
| ES3086 | Glass Coplin Jar | Each |

Plastic Coplin Jar

This sturdy coplin jar is made of polypropylene and designed to hold up to 10 microscope slides. The inside of the jar is grooved to support and protect slides placed back-to-back.

| Cat. No. | Description | UOM |
|----------|--------------------|---------|
| ES050 | Plastic Coplin Jar | 12/case |

Glass Staining Dishes

Our glass staining dishes are ideal for manual staining. Available in 20 and 30 place configurations. Racks sold separately.



| Cat. No. | Description | UOM |
|----------|----------------------------|------|
| ES36970 | Glass Stain Dish, 20 place | Each |
| ES36971 | Glass Stain Dish, 30 place | Each |
| ES36973 | Rack for 20 Place Dish | Each |
| ES36974 | Rack for 30 Place Dish | Each |

Slide Staining Trays

Suitable for routine staining requiring a humid chamber, but is also ideal for hematology, cytology, and microbiology labs.

- When humidity is needed, wells between rails will hold water securely without splashing
- Rubber feet ensure greater stability
- Base is made of sturdy ABS plastic which can withstand most chemicals
- Raised rails for easy slide retrieval
- Base holds excess stain solution from running off slides
- Slide staining trays are stackable to save space



| Description | 10 Place | 20 Place | UOM |
|---------------------|----------|----------|------|
| Base with Clear Lid | ES3071 | ES3075 | Each |
| Base with Black Lid | ES3072 | ES3076 | Each |
| Clear Lid | ES3073 | ES3077 | Each |
| Black Lid | ES3074 | ES3078 | Each |

Saccommanno's Fixative

Specifically designed for collection and fixation of cytology specimens, such as FNA's, urine, sputums, bronchial washings, and pleural and peritoneal fluids.

| Cat. No. | Description | UOM |
|----------|--|----------|
| PFS-20 | Saccommanno's Fixative, 20 mL prefill | 128/case |
| PFS-120 | Saccommanno's Fixative, 120 mL prefill | 48/case |
| ES727-16 | Saccommanno's Fixative, 16 oz. | Each |
| ES727 | Saccommanno's Fixative, gallon | Each |

Easy III™ Rapid Differential Stain

Azer Scientific offers Easy III™, a three-step, rapid differential stain. These stains and fixatives are routinely used for differential staining of peripheral blood smears and bone marrow specimens.

- Extensive applicability in cytology for use in fine needle aspiration analysis
- Allows for processing of specimen to take place in 30 seconds
- Uses 1 fixative and 2 staining solutions to achieve desired results



| Cat. No. | Description | UOM |
|----------|--|-------------------|
| ES902-3 | Easy III Step Stain Set, 3 oz. bottles (Stat Pack) | Each |
| ES902-16 | Easy III Step Stain Set, 16 oz. | Each |
| ES902 | Easy III Step Stain Set, 16 oz. | 10 sets/case |
| ES906 | Easy III Fixative, 16 oz. bottle | 12 x 16 oz./case |
| ES907 | Easy III Stain Solution I, 16 oz. | 12 x 16 oz./case |
| ES908 | Easy III Stain Solution II, 16 oz. | 12 x 16 oz./case |
| ES903 | Easy III Fixative, gallon | 4 x 1 gallon/case |
| ES904 | Easy III Stain Solution I, gallon | 4 x 1 gallon/case |
| ES905 | Easy III Stain Solution II, gallon | 4 x 1 gallon/case |

Cytology Fixative Spray

- Ideal for routine cytological preparations
- Prepared cytology slides can be safely transported once coating is sprayed over the cytological smear

| Cat. No. | Description | UOM |
|----------|--------------------------------|----------------|
| ES34841 | Cytology Fixative Spray, 4 oz. | 6 x 4 oz./case |

Papanicolaou Stains

This group of reagents provide excellent cytoplasmic staining of gynecological and non-gynecological samples. A wide range of formulations are available to allow the end user to select from various color intensities and hues.

EA-36 and **EA-50** are used in conjunction with **OG-6** for gynecological staining.

EA-65 is used with **OG-6** for non-gynecological staining.



| Description | 16 oz. | UOM | Gallon | UOM |
|-------------|--------|--------|--------|--------|
| OG-6 | ES712 | 4/case | ES713 | 4/case |
| EA-36 | ES715 | 4/case | ES716 | 4/case |
| EA-50 | ES717 | 4/case | ES718 | 4/case |
| EA-65 | ES720 | 4/case | ES721 | Each |

EASY Pap Cytology Stain

- A one step alternative to EA and OG staining
- Manufactured using only the highest quality raw materials using dyes certified by the Biological Stain Commission
- Each lot of stain undergoes a functionality test to ensure highest quality results
- Various finished good testing is performed

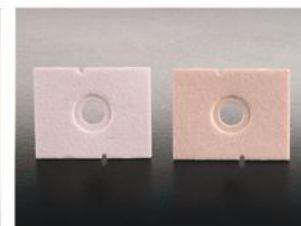
| Cat. No. | Description | UOM |
|----------|------------------------|-------------------|
| ES7036 | EASY Pap Stain, 32 oz | 12 x 32 oz/case |
| ES7037 | EASY Pap Stain, gallon | 4 x 1 gallon/case |



Cytology Funnels (Wescor Cyto-System)

Designed for compatibility with the Wescor Cyto-System, these funnels will snap quickly in place allowing the pad to align correctly with the sample funnel.

- Made with a compression ring around the sample hole in order to better control the rate of absorption
- Two ports, one in the sample well and one in the tunnel, provide great versatility
- Samples are loaded directly through the chamber caps to prevent spilling
- Caps provide added safety to the operator
- Large, centered cell deposit area allows for easy and accurate screening



| Cat. No. | Description | UOM |
|----------|--|----------|
| ES33271 | Single Funnel (Wescor) w/ white filter paper and cap | 48/case |
| ES33275 | White Filter Paper for Wescor cytology funnel | 100/case |

Cytology Funnels (Shandon Cyto-Spin®)

Fully compatible with the Shandon CytoSpin® Centrifuge, our single and double cytology funnels can be used to deposit a thin layer of cells in a clearly defined area of a microscope slide. The filter card absorbs any excess fluid. No alignment necessary. Packaged with closure caps to seal in specimen for added protection.

All components are also available separately.
(Please see Cytology Funnel Accessories)

Single Cytology Funnel (with white filter card and cap): for use with sample volumes up to 0.5 mL. It provides a cell deposition area of 6 mm (28 mm squared), and can be use with all stainless steel slide clips. Includes white filter card and cap.

Single Cytology Funnel (with brown filter card and cap): for use with sample volumes up to 0.4 mL, such as spinal fluid samples. It allows for a slower absorption of fluids.

Double Cytology Funnel (with disposable sample chamber): allows for two samples to be run simultaneously on a single slide and is ideal for immunohistochemistry work. The double funnel provides a cell deposition area of 6 mm (28 mm squared) for sample volumes of up to 0.5 ml.

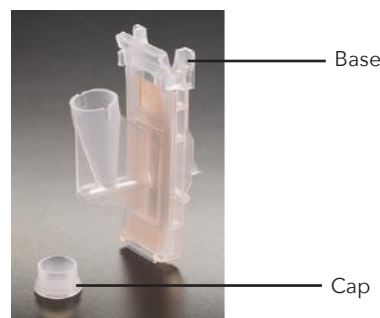
Standard Funnel can be used with stainless steel slide clip.
All plastic Funnel do not need a metal clip.

| Cat. No. | Description | UOM |
|----------|---|----------|
| ES33210 | Standard Single Funnel w/ white filter and cap | 500/case |
| ES33211 | Standard Single Funnel w/ brown filter and cap | 500/case |
| ES33213 | Standard Double Funnel w/ white filter and cap | 500/case |
| ES33230 | All Plastic Single Funnel w/ white filter and cap | 480/case |
| ES33231 | All Plastic Single Funnel w/ brown filter and cap | 480/case |
| ES33233 | All Plastic Double Funnel w/ white filter and cap | 480/case |

Cyto-Spin® is a registered trademark of Thermo Shandon.

Cytology Funnel Accessories

| Cat. No. | Description | UOM |
|----------|--|----------|
| ES33212 | Standard Single Funnel | 500/case |
| ES33214 | Standard Double Funnel | 500/case |
| ES33232 | All Plastic Single Funnel | 500/case |
| ES33234 | All Plastic Double Funnel | 500/case |
| ES33240 | Base | 500/case |
| ES33241 | Cap | 500/case |
| ES33242 | White Filter Paper (for single funnel) | 200/case |
| ES33243 | Brown Filter Paper (for single funnel) | 200/case |
| ES33244 | White Filter Paper (for double funnel) | 200/case |



CerviSoft® Foam Cytology Swab

- For cervical specimen collection
- Non-abrasive foam tip is gentle on patients
- Foam head readily releases cells onto slides
- Polystyrene handle
- Measures 7" in length
- Sterile, individually wrapped



| Cat. No. | Description | UOM |
|----------|----------------------------------|------------------------|
| ES31201 | 7" Cervisoft® Foam Cytology Swab | 100/box, 10 boxes/case |

Cytology Brushes

Histobrush® Tapered Cytology Brush

- For cervical, Pap smear, or buccal cell collection
- Soft tapered nylon tip, polystyrene handle
- Measures 7" in length
- Sterile



Rovers® EndoCervex-Brush®

- Ideal for chlamydia and gonorrhea testing, cellular collection for Pap smear testing, liquid-based Pap preparation, and traditional slide preparation
- Tip and handle made of polypropylene
- Bristle head is stiff, yet flexible; detachable after specimen collection
- Measures 8" in length
- Non-sterile



Rovers® Combination Cervex-Brush

- For the collection of both ectocervical and endocervical cells for Pap smears
- Removable tip allows for use with both liquid-based and conventional cervical cytology tests
- Plastic bristles allow for easy transfer of specimen to glass slides or preservative fluid
- Measures 8" in length
- Non-sterile



| Cat. No. | Description | UOM |
|----------|-------------------------------------|------------------------|
| ES31203 | 7" Histobrush® Cytology Brush | 100/box, 10 boxes/case |
| ES31205 | 8" Endocervex® Cytology Brush | 50/bag, 10/bags/case |
| ES31223 | 8" Rovers® Combination Cervex Brush | 25/bag, 4 bags/case |

Pap Jars

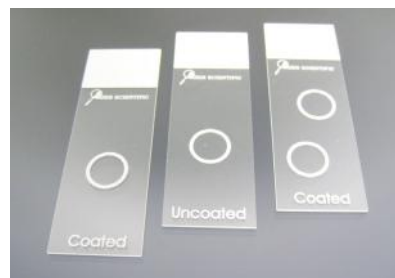
- Pre-filled with 25 mL of 95% reagent grade alcohol
- Securely holds up to 4 standard slides
- Screw top closure for safe, leak-resistant transportation of specimens

| Cat. No. | Description | UOM |
|----------|------------------------------|-------------------|
| ES31210 | Pap jar, standard lid (blue) | 50/tray, 100/case |
| ES31214 | Pap jar, locking lid (pink) | 50/tray, 100/case |
| ES31211 | Pap jar, empty (blue) | 1000/case |



Cytology Spin Slides

- Compatible with the Shandon® and Stat-Spin® cyto-centrifuge, the Wescor Cyto-systems, and Hettich
- Features defined markings for optimal operation and each circle is specifically marked to easily locate the centrifuged specimen
- **Packaging:** 72/box, 2 boxes/case



| Cat. No. | Description | UOM |
|----------|---|----------|
| ESCS-096 | Single well, untreated, compatible with Shandon®, Stat-Spin and Hettich | 144/case |
| ESCS-097 | Double well, untreated, compatible with Shandon®, Stat-Spin and Hettich | 144/case |
| ESCS-098 | Single well, treated, compatible with Shandon®, Stat-Spin and Hettich | 144/case |
| ESCS-099 | Double well, treated, compatible with Shandon®, Stat-Spin and Hettich | 144/case |
| ESCS-090 | Single well, untreated, compatible with Wescor | 144/case |
| ESCS-091 | Single well, treated, compatible with Wescor | 144/case |

Centrifuge Tubes

- Our 15 mL and 50 mL conical tubes are made of clear polypropylene and feature printed graduation marks
- Gamma radiation sterilized; Non-pyrogenic
- Max RCF 12,00xg
- **Working temperature:** 0-40°C



| Cat. No. | Description | UOM |
|----------|---|-------------------|
| ES-9151N | Centrifuge Tube, flat cap, 15 mL, sterile, racked | 50/rack, 500/case |
| ES-9152N | Centrifuge Tube, flat cap, 15 mL, sterile, bulk | 25/bag, 500/case |
| ES-9501N | Centrifuge Tube, flat cap, 50 mL, sterile, racked | 25/rack, 500/case |
| ES-9502N | Centrifuge Tube, flat cap, 50 mL, sterile, bulk | 25/bag, 500/case |

Azer Cytology Preservative Solution

- Exclusive leak free duo-click container contains 30mL specially formulated preservative for the transport of urine specimens for cytology
- Interfering blood cells are gently lysed while somatic cells are preserved for manual or automated cytology processing

| Cat. No. | Description | UOM |
|--------------|----------------------------------|-------------------|
| ES31219-120B | 120 mL container with 30 mL fill | 24/pack, 192/case |



Slide Mailers

Plastic slide mailers are economical and reusable. Each features a sturdy, resealable clasp to ensure a secure closure.

Cardboard slide mailers feature a thumb groove for easy slide removal and cut corners to identify the top of mailer.



| Cat. No. | Description | UOM |
|----------|--------------------------------|-----------|
| ES3267 | Single Place Mailer, plastic | 2000/case |
| ES3268 | Double Place Mailer, plastic | 1000/case |
| ES3269 | Five Place Mailer, plastic | 800/case |
| ES3264 | Single Place Mailer, cardboard | 2000/case |
| ES3265 | Double Place Mailer, cardboard | 1000/case |
| ES3266 | Four Place Mailer, cardboard | 200/case |

Block Mailer

- Made specifically for paraffin blocks
- Transparent design allows for viewing of contents
- Holds up to 6 blocks
- Suitable for all standard tissue and biopsy cassettes



| Cat. No. | Description | UOM |
|----------|---------------------------------------|---------|
| ES31574 | Paraffin Block Mailer, 6 compartments | 50/case |

Cardboard Slide Folders

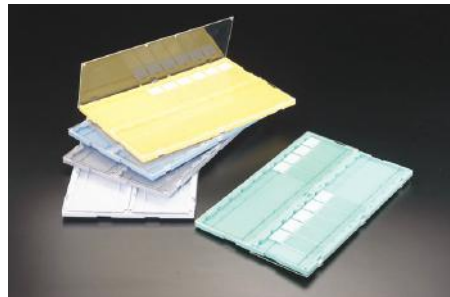
- Hold up to 20 standard microscope slides
- Each slide location is numbered
- Colored bindings allow for easy organization
- Available by the case or each



| Cat. No. | Description | UOM |
|----------|---|---------|
| ES020 | 20-Place Cardboard Slide Folder, black binding | 72/case |
| ES020-B | 20-Place Cardboard Slide Folder, blue binding | 72/case |
| ES020-G | 20-Place Cardboard Slide Folder, green binding | 72/case |
| ES020-R | 20-Place Cardboard Slide Folder, red binding | 72/case |
| ES020-Y | 20-Place Cardboard Slide Folder, yellow binding | 72/case |

Plastic Slide Folders

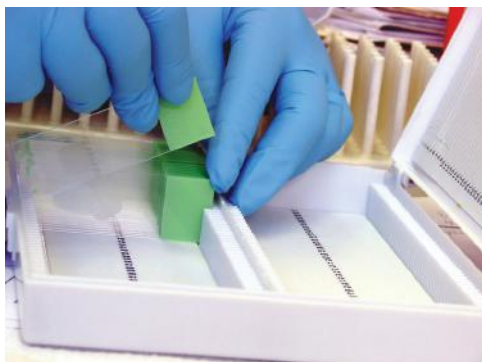
- Hold up to 20 standard microscope slides
- Base holds slides horizontally
- Transparent door tucks under
- Numbered slide locations



| Cat. No. | Description | UOM |
|----------|--------------------------------|---------|
| ES3061 | Plastic Slide Folder, Blue | 10/case |
| ES3062 | Plastic Slide Folder, Green | 10/case |
| ES3063 | Plastic Slide Folder, Gray | 10/case |
| ES3064 | Plastic Slide Folder, White | 10/case |
| ES3065 | Plastic Slide Folder, Yellow | 10/case |
| ES3066 | Plastic Slide Folder, Assorted | 10/case |

Slide Storage Boxes

- Made of sturdy ABS plastic
- Exclusive self-locking lid
- Features a cork lined bottom
- Designed for stacking
- Index paper in lid corresponds with embossed numbers on bottom of box



| Cat. No. | Description | UOM |
|----------|--|------------------|
| ES3249 | 25 Capacity Slide Storage Box, white | 20/box, 200/case |
| ES3250 | 25 Capacity Slide Storage Box, blue | 20/box, 200/case |
| ES3251 | 25 Capacity Slide Storage Box, green | 20/box, 200/case |
| ES3252 | 25 Capacity Slide Storage Box, red | 20/box, 200/case |
| ES3253 | 25 Capacity Slide Storage Box, yellow | 20/box, 200/case |
| ES3254 | 50 Capacity Slide Storage Box, white | 100/case |
| ES3255 | 50 Capacity Slide Storage Box, blue | 100/case |
| ES3256 | 50 Capacity Slide Storage Box, green | 100/case |
| ES3257 | 50 Capacity Slide Storage Box, red | 100/case |
| ES3258 | 50 Capacity Slide Storage Box, yellow | 100/case |
| ES3259 | 100 Capacity Slide Storage Box, white | 50/case |
| ES3260 | 100 Capacity Slide Storage Box, blue | 50/case |
| ES3261 | 100 Capacity Slide Storage Box, green | 50/case |
| ES3262 | 100 Capacity Slide Storage Box, red | 50/case |
| ES3263 | 100 Capacity Slide Storage Box, yellow | 50/case |

Slide Tray

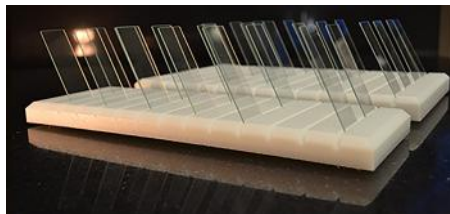
- Reusable
- Made of sturdy plastic
- Holds up to 20 standard microscope slides
- Designed for easy removal of slides
- Trays are stackable, even when holding slides
- Dimensions: 206 mm x 299 mm x 18 mm (H)



| Cat. No. | Description | UOM |
|----------|-------------------|---------|
| ES3069 | Slide Tray, white | 10/case |

Slide Holder

- Receptacle to hold slides during evaluation and cleaning
- Made from high density polyethylene
- Surface-gripping rubber feet
- Chemical resistant
- Dimensions: 4" x 12" with 13 1/8" x 5/8" channels
7" x 12" with 24 1/8" x 5/8" channels



| Cat. No. | Description | UOM |
|------------|-------------------------------|------|
| ES33794-40 | Slide Holder, Holds 40 slides | Each |
| ES33794-90 | Slide Holder, Holds 90 slides | Each |

Azer-Ink Chemically Resistant Markers

Ideal for marking frosted ends of slides and cassettes in the histology laboratory.

Go to page 22 for more information.





Azer Metal Slide Cabinet

Our metal slide cabinet is the ideal choice for storing and archiving slides in just a few feet of space.

- Each slide cabinet features 6 drawers
- 4,500 standard slide capacity
- Reinforced design and heavy gauge steel makes the cabinet sturdy and stackable
- Rubber compressor blocks are included with each cabinet
- Cabinet measures 15.75" x 18.75" x 4.75"

Our slide cabinet system includes 12 cabinets and one base to allow for safe stacking of units. The slide cabinet system holds up to 54,000 slides in 2 square feet of space.



| Cat. No. | Description | UOM |
|----------|---|------|
| ES3925G | Metal Slide Cabinet, 6 drawer, green | Each |
| ES3927G | Metal Slide Cabinet Base, green | Each |
| ES3926G | Metal Slide Cabinet System, 12 cabinets and 1 base, green | Each |
| ES3925T | Metal Slide Cabinet, 6 drawer, tan | Each |
| ES3927T | Metal Slide Cabinet Base, tan | Each |
| ES3926T | Metal Slide Cabinet System, 12 cabinets and 1 base, tan | Each |

Cardboard Storage File for Cassettes or Microscope Slides

- Holds up to 500 tissue blocks or 2,000 slides
- Sturdy and easy to assemble
- Stackable, interlocking design
- Front drawer is designed for easily indexing contents
- Dimensions (L x W x H): 11" x 12" x 4"



| Cat. No. | Description | UOM |
|----------|---|---------|
| ES080 | Tissue Block Storage File, 8 drawer | 10/case |
| ES040 | Microscope Slide Storage File, 4 drawer | 10/case |

Azer Cassette Storage Cabinet

- Holds up to 1,500 standard tissue and biopsy cassettes
- Ergonomic handle for easy opening and secure closing
- Stacking feature for stable long term storage
- Specially designed to integrate with current cabinets
- Drawer labels for quick identification

| Cat. No. | Description | UOM |
|----------|--------------------------------------|------|
| ES39135 | Azer Tissue Cassette Storage Cabinet | Each |



Azer Nitrile Examination Gloves

- Advanced formulation for exceptional comfort and fit providing better tactile sensitivity
- Tested for use with over 60 chemicals and approved for use with chemotherapy drugs
- Ideal for most clinical settings
- Resistant to permeation of chemotherapy drugs against ASTM D6978

- Color: Teal
- Thickness:
 - Finger: 4.5 ± .2 mil
 - Palm: 3.0 ± .2 mil
 - Cuff: 2.5 ± .2 mil



| Cat. No. | Description | UOM |
|-----------|---------------------------|------------------------|
| ES86101XS | Nitrile gloves, black, XS | 200/box, 10 boxes/case |
| ES86101S | Nitrile gloves, black, S | 200/box, 10 boxes/case |
| ES86101M | Nitrile gloves, black, M | 200/box, 10 boxes/case |
| ES86101L | Nitrile gloves, black, L | 200/box, 10 boxes/case |
| ES86101XL | Nitrile gloves, black, XL | 180/box, 10 boxes/case |

Biodegradable Nitrile Plus Gloves

- 92.6% biodegradable in 945 days in landfills



EcoTek

- Color: Black
- SW Grip
- 9.0" length
- Tear-resistant cuff
- Thickness:
 - Finger: 5.6mil, 0.14mm
 - Palm: 5.0mil, 0.13mm
 - Cuff: 4.1mil, 0.10mm



EcoTek

- Color: Teal
- SW Grip
- 9.5" length
- Tear-resistant cuff
- Thickness:
 - Finger: 5.8mil, 0.15mm
 - Palm: 5.0mil, 0.13mm
 - Cuff: 3.9mil, 0.10mm

| Cat. No. | Description | UOM |
|-----------|--------------------------------|-------------------------|
| ES86121S | Nitrile Plus gloves, black, S | 100/ box, 10 boxes/case |
| ES86121M | Nitrile Plus gloves, black, M | 100/box, 10 boxes/case |
| ES86121L | Nitrile Plus gloves, black, L | 100/box, 10 boxes/case |
| ES86121XL | Nitrile Plus gloves, black, XL | 100/box, 10 boxes/case |
| ES86122S | Nitrile Plus gloves, teal, S | 100/box, 10 boxes/case |
| ES86122M | Nitrile Plus gloves, teal, M | 100/box, 10 boxes/case |
| ES86122L | Nitrile Plus gloves, teal, L | 100/box, 10 boxes/case |
| ES86122XL | Nitrile Plus gloves, teal, XL | 100/box, 10 boxes/case |

Latex Gloves

- Powder-free
 - Our latex plus glove provides consistent grip, dry or wet
 - Packaging: 100 gloves/box
 - Available in XS, S, M, L, XL
- For ordering, add appropriate size abbreviation to end of Cat. No.*



| Cat. No. | Description | UOM |
|----------|-------------------|---------------|
| ES3681 | Latex Glove, plus | 10 boxes/case |

Lab Coats - Level 3 SMS Fabric

- SMS fabric that is highly fluid resistant
- Unisex
- Fire retardant, latex-free, and highly breathable
- Tear and puncture resistance
- Available in XS, S, M, L, XL, 2XL, 3XL



| Cat. No. | Description | UOM |
|---------------|----------------------|------------------------|
| ES86407W-XS | Lab Coat, white, XS | 10/pack, 10 packs/case |
| ES86407W-S | Lab Coat, white, S | 10/pack, 10 packs/case |
| ES86407W-M | Lab Coat, white, M | 10/pack, 10 packs/case |
| ES86407W-L | Lab Coat, white, L | 10/pack, 10 packs/case |
| ES86407W-XL | Lab Coat, white, XL | 10/pack, 10 packs/case |
| ES86407W-XXL | Lab Coat, white, XXL | 10/pack, 10 packs/case |
| ES86407W-XXXL | Lab Coat, white, 3XL | 10/pack, 10 packs/case |

Lab Safety Goggles

- Our anti-fog chemical goggles (ES3695) are ideal for any lab setting where chemicals are being used
- We also offer goggles (ES3696) specially designed to fit over eyeglasses



| Cat. No. | Description | UOM |
|----------|--------------------------------|------|
| ES3695 | Standard Chemical Goggles | Each |
| ES3696 | Safety Goggles, for eyeglasses | Each |



Neutralyde™ Liquid Formalin Neutralizer

- Phosphate-free, eco-friendly liquid neutralizer
- Effective on formaldehyde and glutaraldehyde solutions
- No pH adjustment is required when used properly
- Treated waste may be disposed in sanitary drain
- Neutralization is complete in 8 hours



| Cat. No. | Description | UOM |
|----------|------------------------------|------|
| ES766 | Neutralyde™, 1 gallon cube | Each |
| ES767 | Neutralyde™, 2.5 gallon cube | Each |
| ES768 | Neutralyde™, 5 gallon cube | Each |

Polyform-F

- Polyform-F is used for the safe and rapid control of harmful vapors from Formaldehyde, Glutaraldehyde and 10% Neutral Buffered Formalin.
- After granules are applied, the harmful vapors are eliminated in 2-3 minutes.

| Cat. No. | Description | UOM |
|------------|--|--------------|
| ES38541-32 | Polyform-F, spill control granules, 32oz. | Each |
| ES38541-4G | Polyform-F, spill control granules, 1 gallon | 4 x 1 gallon |

Chemical Cube Dispenser

- Provides a stable surface for small containers when filling
- Catches chemicals dripping from spigot
- An alarm will immediately signal personnel of any spills
- Unit can be closed for compact and easy storage



| Cat. No. | Description | UOM |
|----------|-------------------------|------|
| ES86350 | Chemical Cube Dispenser | Each |

Form-Zero Powder Formalin Neutralizer

- One bottle neutralizes up to one gallon of 10% formalin waste or 4% glutaraldehyde with just 500 cc of powder
- Container inserts directly into a gallon container opening reducing dusting and risk to personnel
- Non-hazardous neutralized waste can be safely disposed after just 20 minutes with no pH adjustment
- Unique formulation eliminates drain clogging polymers
- Formalin-Free Confirmation Test Strips quickly and positively confirm that 10% Neutral Buffered Formalin is completely neutralized after treatment with our Form-Zero Formalin Neutralizing Powder.

| Cat. No. | Description | UOM |
|----------|--|------------------|
| ES86631 | Form-Zero, 500 cc bottles | 500 cc x 12/case |
| ES86632 | Form-Zero, 500 cc bottles | 500 cc x 32/case |
| ES86633 | Formalin-Free Confirmation Test Strips | 10 tests/kit |

Azer Lab Wipes

- Low lint, heavy-duty, air-layered material
- For use as an absorbent work surface for cover slipping or general lab clean up
- Each wipe measures 12.5" x 13"
- 1/4 fold packaged in packs of 50

| Cat. No. | Description | UOM |
|----------|----------------|----------|
| ES3900 | Azer Lab Wipes | 900/case |

Formalin Absorbent Pads

Azer Scientific's formalin absorbent pads are specially treated for the destruction of formaldehyde, 10% Neutral Buffered Formalin, and glutaraldehyde solutions. The pads also work to eliminate any chemically hazardous vapors.



| Cat. No. | Description | UOM |
|----------|---|--------------|
| ES728 | Blue Sheet Pad, 11" x 10", 55 sheets per roll | 6 rolls/case |
| ES729 | White Pad, 6" x 14" | 48/case |
| ES730 | White Pad, 9" x 21" | 30/case |

Safety Monitoring Badges

- Our monitoring badges are easy to use and light weight
- Each monitor is manufactured to meet and exceed applicable OSHA and NIOSH Accuracy Requirements at both 8-hour TWA and 15-minute STEL levels.
- They may be comfortably worn in the employees breathing zone to measure personal exposure
- They may also be used for "area" exposure monitoring

| Cat. No. | Description | UOM |
|----------|-------------------------------|-------|
| ES7293 | Ethanol monitoring badge | 4/box |
| ES38231 | Xylene vapor monitoring badge | 4/box |
| ES38531 | Formaldehyde monitoring badge | 4/box |

Flammable Safety Cabinets

- OSHA compliant
- Constructed of double walled 18-gauge steel
- Each cabinet is labeled with: "FLAMMABLE-KEEP FIRE AWAY"
- The self-closing doors feature a fusible link that melts at 71°C



| Cat. No. | Description | UOM |
|----------|--|------|
| ES86300 | Safety Cabinet, 30 gallon, manual door | Each |
| ES86301 | Safety Cabinet, 45 gallon, sliding door | Each |
| ES86311 | Safety Cabinet, 45 gallon, self-closing door | Each |

Scalpel Blade Remover

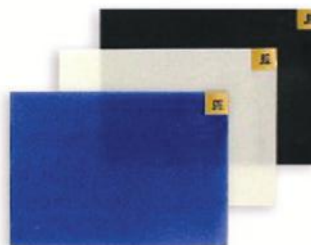
- The scalpel blade remover is simple to use with a quick, single-handed "push, click, and pull" action to remove and contain used scalpel blades
- Holds up to 100 blades
- Compatible with blades up to #25, and #3, 4, 5, 7, and 9 handles



| Cat. No. | Description | UOM |
|----------|--|------|
| ES4482 | Scalpel Blade Remover | Each |
| ES4482-M | Mounting Bracket for Scalpel Blade Remover | Each |

Sticky Mats for Laboratory

- Help to capture dust and dirt from foot traffic into laboratory
- Cohesive, anti-microbial layer peels off when it becomes dirty
- Reduces potential for the spreading of germs and bacteria
- Ideal for histology labs



| Cat. No. | Description | UOM |
|-----------|---|--------|
| ES3694B | Sticky Mat, 36" x 45", 30 sheets, blue | 8/case |
| ES86618-W | Sticky Mat, 18" x 36", 30 sheets, white | 4/case |
| ES86618-B | Sticky Mat, 18" x 36", 30 sheets, blue | 4/case |

Biohazard Splash Guard

- Made of clear acrylic material
- Protects user from splatter and spray of fluids
- Angle of splash guard provides excellent working environment



| Cat. No. | Description | UOM |
|----------|-------------------------------|------|
| ES3939 | Splash Guard, 8" x 18" x 10" | Each |
| ES3940 | Splash Guard, 12" x 18" x 10" | Each |
| ES3941 | Splash Guard, 12" x 23" x 15" | Each |

Sharps Containers

Three grip dome for smooth opening and closing

- Puncture resistant
- Autoclavable and incinerator safe



| Cat. No. | Description | UOM |
|------------|--------------------------------|---------|
| ES46381-4R | 0.9 L Sharps Container, red | 18/case |
| ES46381-4Y | 0.9 L Sharps Container, yellow | 18/case |



Benchtop Grossing Station

Azer Scientific's new benchtop grossing station is a fully customizable grossing station that can be installed on any lab bench! Azer Scientific's sales representatives will assist you in choosing the custom dimensions to fit your needs. Electricity and water hookups required.

Fume Hoods & Accessories

Azer Scientific offers a full range of fume hoods and fume hood accessories to fit the needs of any size laboratory.

Flat-Top Surgery Table

Features: 22" wide x 60" long, made from one piece of heavy gauge stainless steel, slight center elevation, shallow trough around edges, one direction tilt locks in any angle from horizontal to near vertical, attachment rail system, optional heated top.



V-Top Surgery Table

Features: 19" wide x 58" long, 360° revolving capability, horizontal to near vertical positioning options, two sliding quick-release cam cleat adjustments, attachment rail system, stainless steel trough, foot operated lift mechanism.



Pathology Workstations

Our engineers and designers will work with you to create custom designs to best suit the needs of your laboratory. We offer many high-quality stainless steel products, including: backdraft workstations, cabinets, casework, bedding dispensers, bottle filling stations, and more.



Large Animal Surgery & Necropsy Tables

We offer a full range of hydraulic large animal surgery and necropsy tables. The tables are customizable around the weight capacity needed. Table top configurations are also customizable (kidney, rectangular, and square). Mobile and fixed options available.



To learn more about our pathology workstation, fume hoods, surgery tables, and other laboratory solution, please contact us by
Phone: **1-877-770-AZER** or E-Mail: **Sales@AzerSci.com**

| | |
|-------------------------------|----|
| 10% Neutral Buffered Formalin | |
| Bulk | 15 |
| Prefilled Containers | 3 |
| 20% Neutral Buffered Formalin | 15 |
| 37% Formaldehyde | 16 |

A

| | |
|----------------------|----|
| Alcohol, Prefilled | 4 |
| Alcoholic Formalin | |
| Bulk | 15 |
| Prefilled Containers | 4 |
| Azer-5 Fixative | 15 |
| AzerFin™ Paraffin | 18 |
| AzerPrep Fixative | 16 |

B

| | |
|----------------------|----|
| Base Molds | 18 |
| Biohazard Bags | 6 |
| Biopsy Bags | 9 |
| Biopsy Pads | 10 |
| Block Mailer | 41 |
| Block Storage | 43 |
| Bluing Reagent | 25 |
| Bouin's Fixative | |
| Bulk | 15 |
| Prefilled Containers | 5 |
| Brush | 19 |

C

| | |
|-----------------------------|------------|
| Cassettes | |
| Embedding with Metal Lid | 13 |
| Hinged Tissue, Biopsy, Mesh | 11, 12 |
| Hinged with separate lid | 12, 13 |
| One-Piece Tissue, Biopsy | 10 |
| Sleeved for Automation | 11, 12, 13 |
| Taped for Automation | 11, 13 |
| Two-Piece Tissue, Biopsy | 10 |
| Cassette Printers | 14 |

C

| | |
|--------------------------------|--------|
| Cassette Storage File | 43 |
| Cassette Storage Cabinet | 43 |
| Centrifuge Tubes | 40 |
| Chemical Cube Dispenser | 45 |
| Chemically Resistant Markers | 23 |
| CerviSoft™ Foam Cytology Swabs | 40 |
| Clarifying Reagents | 24 |
| Control Slides | 23, 35 |
| Coplin Jars | 37 |
| Cover Glass | 23 |
| Cutting Boards | 8 |
| Cytology Brushes | 40 |
| Cytology Fixative Spray | 38 |
| Cytology Funnels | 39 |
| Cytology Preservative Solution | 40 |
| Cytology Spin Slides | 40 |
| Cytology Stains | 38 |
| Cytology Swab | 40 |

D

| | |
|--------------|----|
| Decalcifiers | 16 |
|--------------|----|

E

| | |
|------------------------------------|--------|
| EASY III™ Rapid Differential Stain | 26, 38 |
| EasyFix™ Alcoholic Formalin | |
| Bulk | 15 |
| Prefilled Containers | 4 |
| EASY Pap Cytology Stain | 38 |
| Eosin-Phloxine | 25 |
| Eosin-Y (Alcoholic) | 25 |
| EXCEL Alcohols | 17 |

**F**

| | |
|--|-------|
| Flammable Safety Cabinet | 46 |
| Folders | 41 |
| Forceps | 7 |
| Formaldehyde | 16 |
| Formalin Absorbent Pads | 7, 45 |
| Formalin Concentrate | 16 |
| Formalin-Free Confirmation Test Strips | 45 |
| Formalin Neutralizer | 45 |
| Formalock™ Containers | 3, 5 |
| FormaPad™ | 7 |
| Freezing Spray | 19 |
| Fume Hoods | 47 |

G

| | |
|---------------------|----|
| Gauze | 7 |
| Gill Hematoxylins | 25 |
| Glacial Acetic Acid | 16 |
| Gloves | 44 |
| Goggles | 44 |
| Grossing Board | 8 |
| Grossing Pads | 7 |
| Grossing Station | 47 |

H

| | |
|------------------------------|----|
| H&E Stainer | 27 |
| Hematoxylins | |
| Gill | 25 |
| Harris | 25 |
| Iron (Weigert's) | 25 |
| Modified Mayer's | 25 |
| Histobond™ Microscope Slides | 21 |
| Histology Reagents | 24 |
| Hollande's Fixative | |
| Bulk | 15 |
| Prefilled Containers | 5 |

I

| | |
|-----------------------------|----|
| Icon Stains | 24 |
| IHC Pre-Procedure Solutions | 36 |
| IHC Reagents and Buffers | 36 |
| IHC Stains | 36 |
| IHC Tissue Controls Slides | 35 |
| Isopropyl Alcohol | 17 |

L

| | |
|----------------|-------|
| Lab Coats | 44 |
| Lab Wipes | 7, 45 |
| Linear Stainer | 27 |

M

| | |
|-------------------------------|----|
| Mailers | 41 |
| Markers, Chemically Resistant | 23 |
| Metal Slide Cabinet | 43 |
| Methyl Alcohol | 17 |
| Methylene Blue | 26 |
| Michel's Transport Medium | |
| Bulk | 15 |
| Prefilled Containers | 5 |
| Microscope Slides | |
| AzerBond™ for IHC | 21 |
| Histobond™ | 21 |
| Unifrost® | 21 |
| Microscope Slide Label | 21 |
| Microtome Alignment Tool | 19 |
| Microtome Blades | 19 |
| Microtome Brush | 19 |
| Mounting Medium | 23 |

N

| | |
|-------------|----|
| Nuclear Red | 26 |
|-------------|----|

P

| | |
|---------------------|----|
| Papanicolaou Stains | 38 |
| Pap Jars | 40 |

P

| | |
|-------------------------------|----|
| Paraffin | 18 |
| Paraffin Dispenser | 18 |
| Pathology Containers | |
| Screw Top | 6 |
| Snap Top | 6 |
| Pathology Grossing Board | 8 |
| Pathology Workstation | 47 |
| Potassium Hydroxide | 16 |
| Polyform-F | 45 |
| Prefilled Formalin Containers | 3 |
| Presto Slide Printers | 22 |
| Primo Cassette Printers | 14 |
| Prostate Biopsy Kits | 4 |

R

| | |
|--------------------------|--------|
| Rapid Differential Stain | 26, 38 |
| Rapid Freeze™ | 19 |
| Reagent Grade Alcohols | 17 |

S

| | |
|--------------------------------------|-------|
| Saccomanno's Fixative | 38 |
| Safety Goggles | 44 |
| Saturated Lithium Carbonate Solution | 25 |
| Safety Monitoring Badges | 46 |
| Scales | 9 |
| Scalpels | 8, 9 |
| Scalpel Blade Remover | 9, 46 |
| Schiff's Reagent | 26 |
| Self Laminating Slide Labels | 21 |
| Sharps Container | 46 |
| Slide Folders | 41 |
| Slide Holder | 42 |
| Slide Hybridization System, IHC | 36 |
| Slide Mailers | 41 |
| Slide Printer | 22 |
| Slide Storage Boxes | 42 |
| Slide Tray | 42 |

S

| | |
|------------------------|---------|
| Slide Warmer | 20 |
| Special Stain Kits | 28 - 34 |
| Splash Guard | 46 |
| Stainer | 27 |
| Staining Dishes, Glass | 37 |
| Staining Jars | 37 |
| Staining Trays | 37 |
| Sticky Mats | 46 |
| Surgery Tables | 47 |

T

| | |
|-----------------------|----|
| Task Wipes | 19 |
| Tissue Control Slides | 35 |
| Tissue Floating Baths | 20 |
| Tissue Marking Dyes | 8 |
| Trimming Blades | 9 |

U

| | |
|-----------------------------|----|
| Unifrost® Microscope Slides | 21 |
|-----------------------------|----|

W

| | |
|---------------|----|
| Water | |
| Deionized | 17 |
| High Purity | 17 |
| Reagent Grade | 17 |
| Wax Trimmer | 18 |

X

| | |
|------------------------------|----|
| Xylene | 17 |
| Xylene Substitute, Everclear | 17 |

Z

| | |
|----------------------|----|
| Zinc Formalin | |
| Bulk | 15 |
| Prefilled Containers | 4 |



POWERED BY BIOLYST



1-877-770-2937






701 Hemlock Road,
Morgantown PA 19543



Info@AzerSci.com



www.AzerSci.com

Connect with Us:    



An ISO 13845: 2016 Certified Company