



BOCCARDS

Unstoppable Discounts



Enjoy seasonal shopping with a wave of discounts



For all BOC Credit & Debit (ATM) Cards

up to 80% OFF

@ 4000+ partner outlets islandwide during this festive season

BOCCARDS
UNSTOPPABLE YOU

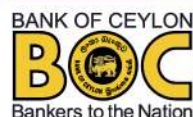
To apply for a new credit card, type **"APPLY"** and send an SMS to **076 700 2400**.

Conditions apply



A (Ika) Fitch Rating, AAA Brand Finance Rating.
Bank of Ceylon is a Licensed Commercial Bank supervised by the Central Bank of Sri Lanka.

Head Office, BOC Square,
No.1, Bank of Ceylon Mawatha, Colombo 1.



Conditions Apply



BOCCARDS

Unstoppable Discounts



Enjoy seasonal shopping with a wave of discounts

1. Textile & Footware
2. Travel & Leisure
3. Restaurents
4. Health & Beauty
5. Online
6. Lifestyle
7. Jewellery
8. Supermarket
9. Automobile
10. Education

To apply for a new credit card, type "**APPLY**" and send an SMS to **076 700 2400**.



BOC CARDS



Unstoppable Discounts

Enjoy seasonal shopping with a wave of discounts



TEXTILE & CLOTHING

UP TO

50%

Textile & Clothing අරඟන Wow වෙනින
Credit / Debit Card වලට හිතට Fit වන Discount රැලීම



Front Line - Balangoda
• Credit - 20%
• Debit - 10%

15th & 30th March
Max. Dis. Rs.20,000/-



Dilly & Carlo
• Credit - 25%
• Debit - 10%

16th, 17th March
Max. Dis. Rs.20,000/-



Nils Store
• Credit - 20%
• Debit - 10%

16th, 17th March
Max. Dis. Rs.20,000/-



Enuli Fashion
• Credit - 25%
• Debit - 10%

16th, 23rd, 29th March
& 02nd April
Max. Dis. Rs.20,000/-



Tiyana Big City - Balangoda
• Credit - 25%
• Debit - 10%

16th, 30th March
Max. Dis. Rs. 20,000/-,
Min. Bill Val. Rs. 4,000/-



Tiyana Fashion - Pelmadulla
• Credit - 25%
• Debit - 10%

16th, 30th March
Max. Dis. Rs. 20,000/-,
Min. Bill Val. Rs. 4,000/-

To apply for a new credit card, type "APPLY" and send an SMS to 076 700 2400.



Kelly Felder

- Credit - 20%
- Debit - 10%

17th, 18th March
Max. Dis. Rs. 20,000/-



Redvers Buller

- Credit - 20%
- Debit - 10%

17th, 18th March
Max. Dis. Rs. 20,000/-

SCYLIA

SCYLIA ZELUS

Scylla Zelus

- Credit - 20%
- Debit - 10%

17th, 18th March
Max. Dis. Rs. 20,000/-



The Kids Warehouse

- Credit - 25%
- Debit - 15%

17th, 18th March
& 03rd, 04th April
Max. Dis. Rs. 20,000/-

HOUSE OF FASHIONS

House of Fashions

- Credit - 25%
- Debit - 10%

17th, 31st March
& 06th, 10th April
Max. Dis. Rs. 20,000/-



EKKO

- Credit - 20%
- Debit - 10%

18th - 22nd March
Max. Dis. Rs. 20,000/-

Thilakawardhana Textiles

Thilakawardane Textile

- Credit - 10%

19th, 20th March
Clothing & Shoes only,
Max. Dis. Rs. 20,000/-

BAYLEEE

Bayleee

- Credit - 30%
- Debit - 20%

20th - 22nd March
Max. Dis. Rs. 20,000/-

EXIBIT

by COOL PLANET

Exhibit Outlet - One Galle Face Mall

- Credit - 20%
- Debit - 10%

21st, 22nd March
Max. Dis. Rs. 20,000/-

COOL PLANET

LIFE IN STYLE

Cool Planet

- Credit - 20%
- Debit - 10%

21st, 22nd March
Max. Dis. Rs. 20,000/-

NICK NACK

ニック
ナック

Nick Nack

- Credit - 20%
- Debit - 10%

21st, 22nd March
Max. Dis. Rs. 20,000/-

SUPUL

Fashions For Your Life

Supul Collection

- Credit - 20%

21st, 22nd March
Max. Dis. Rs. 20,000/-



The Factory Outlet

- Credit - 25%
- Debit - 15%

21st, 22nd, 31st March &
01st April
Max. Dis. Rs. 20,000/-



Piyarathna Tex

- Credit - 25%
- Debit - 10%

22nd - 24th March
Max. Dis. Rs. 20,000/-



Junior Ware House

- Credit - 35%
- Debit - 15%

22nd - 24th March
Max. Dis. Rs. 20,000/-

To apply for a new credit card, type "APPLY" and send an SMS to 076 700 2400.



Mangala Textile

- Credit - 20%
- Debit - 10%

22nd, 23rd March
Max. Dis. Rs. 20,000/-



House Of Cotton Pvt(Ltd)

Kreation House of Cotton

- Credit - 20%
- Debit - 10%

22nd - 24th March &
05th - 10th April
Max. Dis. Rs. 20,000/-



Handloom Gallery

- Credit - 20%
- Debit - 10%

22nd, 23rd March &
05th, 06th April
Max. Dis. Rs. 20,000/-



Spring & Summer

- Credit - 25%
- Debit - 10%

22nd March & 05th, 06th April
Max. Dis. Rs. 20,000/-



Super Kids

- Credit - 20%
- Debit - 10%

23rd, 24th March
Max. Dis. Rs. 20,000/-



Member of Damro Group

Diliganz Fashion (Pvt) Ltd

- Credit - 25%
- Debit - 10%

23rd, 24th March
Max. Dis. Rs. 12,500/-



Dirali

- Credit - 25%
- Debit - 10%

23rd, 24th March
Max. Dis. Rs. 12,500/-



Nirmani Dress Point

- Credit - 25%
- Debit - 10%

23rd, 24th March
Max. Dis. Rs. 20,000/-



Richlook

- Credit - 20%
- Debit - 10%

23rd, 24th March
Max. Dis. Rs. 20,000/-,
Min. Bill Rs. 4,000/-, On Selected Items



Ama Shopping Center

- Credit - 20%
- Debit - 10%

23rd, 24th & 28th - 30th March
Max. Dis. Rs. 20,000/-



Tonypellé

- Credit - 25%
- Debit - 10%

23rd, 24th March &
08th, 09th April
Max. Dis. Rs. 20,000/-



Beauty Of An Elegant Fashion

Sarathchandra Tex

- Credit - 25%
- Debit - 10%

23rd, 24th & 30th March
Max. Dis. Rs. 20,000/-



Textile (Pvt) Ltd

Nadiyas

- Credit - 20%
- Debit - 10%

23rd March & 04th April
Max. Dis. Rs. 20,000/-



Samanmal Textiles

- Credit - 30%
- Debit - 10%

23rd, 30th March & 06th April
Max. Dis. Rs. 20,000/-,
Min. Bill Rs. 6,000/-



සපත්තු නම් හෙළන්න

Helanka (K Plus)

- Credit - 25%
- Debit - 10%

24th, 30th, 31st March & 11th April
Max. Dis. Rs. 20,000/-, Horana,
Negombo, Avissawella



සපත්තු නම් හෙලන්කා

Helanka

- Credit - 25%
- Debit - 10%

24th, 30th, 31st March & 11th April
 Max. Dis. Rs. 20,000/-, Eheliyagoda,
 Rathnapura, Maharagama & Piliyandala



Molly Shopping Centre - Wattagama

- Credit - 20%
- Debit - 10%

24th & 31st March
 Max. Dis. Rs. 20,000/-



Molly Fashion Circle - Kuliyaipitiya

- Credit - 20%
- Debit - 10%

24th & 31st March
 Max. Dis. Rs. 20,000/-



Clothing • Accessories

Level outfitters

- Credit - 20%
- Debit - 10%

25th, 26th March
 Max. Dis. Rs. 20,000/-



The Clothing Store

Zuzi

- Credit - 20%
- Debit - 10%

25th & 26th March
 Max. Dis. Rs. 20,000/-



Ceylon City Mart Hidayath - Galle

- Credit - 25%
- Debit - 10%

25th, 26th March & 10th, 11th April
 Max. Dis. Rs. 20,000/-



Kailash Fashion

- Credit - 20%
- Debit - 7.5%

25th - 31st March
 Max. Dis. Rs. 20,000/-



Wills by Zac

- Credit - 20%
- Debit - 10%

25th - 31st March
 Max. Dis. Rs. 20,000/-



Prasad Textiles

- Credit - 20%
- Debit - 10%

25th March & 01st, 08th April
 Max. Dis. Rs. 20,000/-



Prasad Fashion Square

- Credit - 20%
- Debit - 10%

25th March & 01st, 08th April
 Max. Dis. Rs. 20,000/-



Lurreli

- Credit - 20%
- Debit - 10%

26th - 31st March
 Max. Dis. Rs. 20,000/-



Mansion

- Credit - 20%
- Debit - 10%

26th March - 20th April
 Max. Dis. Rs. 20,000/-



Dfferent

- Credit - 25%
- Debit - 10%

26th, 27th March
 Max. Dis. Rs. 20,000/-,
 Min. Bill Rs. 2,000/-



Cheapside

- Credit - 25%
- Debit - 10%

26th, 27th March
 Max. Dis. Rs. 20,000/-,
 Min. Bill Rs. 2,000/-



Stripes & Checks

- Credit - 30%
- Debit - 15%

26th, 27th March
 Max. Dis. Rs. 20,000/-

To apply for a new credit card, type "APPLY" and send an SMS to 076 700 2400.



Jenitas

- Credit - 20%
- Debit - 10%

26th, 27th March &
02nd, 06th April
Max. Dis. Rs. 20,000/-



Hameedia

- Credit - 25%
- Debit - 10%

27th, 28th March
Max. Dis. Rs. 25,000/-



Envoy Mansion

- Credit - 25%
- Debit - 10%

27th, 28th March
Max. Dis. Rs. 25,000/-



Envoy London - Colombo City Centre

- Credit - 25%
- Debit - 10%

27th, 28th March
Max. Dis. Rs. 25,000/-



Signature

- Credit - 25%
- Debit - 10%

27th, 28th March
Max. Dis. Rs. 25,000/-



Adidas

- Credit - 25%
- Debit - 10%

27th, 28th March
Max. Dis. Rs. 25,000/-



Sting

- Credit - 20%
- Debit - 10%

27th, 28th March
Max. Dis. Rs. 20,000/-



Shirtwork

- Credit - 25%
- Debit - 10%

28th, 29th March
Max. Dis. Rs. 25,000/-



Emerald

- Credit - 25%
- Debit - 10%

28th, 29th March
Max. Dis. Rs. 25,000/-



Crocodile

- Credit - 25%
- Debit - 10%

28th, 29th March
Max. Dis. Rs. 25,000/-



Double XL

- Credit - 25%
- Debit - 15%

28th, 29th March
Max. Dis. Rs. 20,000/-



DXL - One Galle Face Mall

- Credit - 25%
- Debit - 15%

28th, 29th March
Max. Dis. Rs. 20,000/-



Abundance

- Credit - 20%
- Debit - 10%

28th - 31st March
Max. Dis. Rs. 20,000/-



Diifer

- Credit - 25%
- Debit - 15%

28th March & 03rd April
Max. Dis. Rs. 20,000/-

KADAPATHA

Kadapatha

- Credit - 20%

28th, 29th March &
09th, 10th April
Max. Dis. Rs. 20,000/-

SUPER
Fashion
Secret life styling

Super Fashion

- Credit - 25%
- Debit - 10%

29th, 30th March
Max. Dis. Rs. 25,000/-



Saree Mandir

- Credit - 25%
- Debit - 15%

29th - 31st March
Max. Dis. Rs. 20,000/-

zigzag[®]

Zigzag

- Credit - 30%
- Debit - 20%

29th - 31st March
Max. Dis. Rs. 30,000/-



The Factory Hub

- Credit - 30%
- Debit - 15%

29th - 31st March
Max. Dis. Rs. 20,000/-



Libera

- Credit - 25%
- Debit - 15%

29th - 31st March
Max. Dis. Rs. 20,000/-

VIDUMINI[®]
FASHION

Style to Feel in Comfort

Vidumini Fashion

- Credit - 20%
- Debit - 10%

29th - 31st March
Max. Dis. Rs. 20,000/-



GCS Fashions

- Credit - 25%
- Debit - 10%

29th - 31st March & 01st April
Max. Dis. Rs. 20,000/-

GALLE CITY
STORES (PVT) LTD

Galle City Stores

- Credit - 25%
- Debit - 10%

29th - 31st March & 01st April
Max. Dis. Rs. 20,000/-



Ruth Styles

- Credit - 20%
- Debit - 10%

29th - 31st March &
05th - 07th April
Max. Dis. Rs. 20,000/-



La Vivente

- Credit - 25%
- Debit - 10%

29th - 31st March &
05th - 07th April
Max. Dis. Rs. 20,000/-



Manthara Fashion

- Credit - 20%
- Debit - 10%

29th - 31st March &
05th - 07th April
Max. Dis. Rs. 20,000/-



ADEAZ
ADEAZ FASHION.COM (PVT) LTD.

Adeaz Fashion

- Credit - 20%
- Debit - 10%

29th - 31st March &
06th - 08th April
Max. Dis. Rs. 20,000/-

FASHION BUG[®]

Fashion Bug

- Credit - 25%
- Debit - 10%

29th, 30th March &
08th April
Max. Dis. Rs. 25,000/-



Gali's Lingerie

- Credit - 20%
- Debit - 10%

29th - 30th March &
10th April
Max. Dis. Rs. 20,000/-



Choice Park

- Credit - 20%
- Debit - 15%

30th March
Max. Dis. Rs. 20,000/-

To apply for a new credit card, type "APPLY" and send an SMS to 076 700 2400.

World's Best Creation For The Nations



New Selection

- Credit - 20%
- Debit - 15%

30th March

Max. Dis. Rs. 20,000/-



Isira Fashion

- Credit - 30%
- Debit - 10%

30th March & 03rd April

Max. Dis. Rs. 20,000/-



Piyara Fashion

- Credit - 20%
- Debit - 10%

30th March & 05th April

Max. Dis. Rs. 10,000/-



ASB Fashion

- Credit - 20%
- Debit - 10%

30th, 31st March

Max. Dis. Rs. 20,000/-



New Manel Fashion

- Credit - 20%
- Debit - 5%

30th, 31st March

Max. Dis. Rs. 20,000/-



Shopimo Panadura

- Credit - 25%
- Debit - 10%

30th, 31st March

Max. Dis. Rs. 20,000/-



Emma Fashion

- Credit - 20%
- Debit - 10%

30th, 31st March

Max. Dis. Rs. 20,000/-



RAJA GARMENTS

Raja Richway Garmets

- Credit - 20%
- Debit - 10%

30th, 31st March

Max. Dis. Rs. 20,000/-



Saheli Fashion

- Credit - 25%
- Debit - 12.5%

30th, 31st March

Max. Dis. Rs. 20,000/-

D-BLAQ

D BlaQ

- Credit - 20%
- Debit - 10%

30th, 31st March

Max. Dis. Rs. 20,000/-

Yashodara

Yashodara

- Credit - 25%
- Debit - 12.5%

30th, 31st March

Max. Dis. Rs. 20,000/-



AMARAZ

Amaraz

- Credit - 20%
- Debit - 10%

30th, 31st March & 01st - 13th April

Max. Dis. Rs. 20,000/-



ARD Selection

- Credit - 20%
- Debit - 10%

30th, 31st March & 03rd - 04th April

Max. Dis. Rs. 20,000/-



RV Fashion

- Credit - 25%
- Debit - 10%

30th, 31st March & 05th - 06th April

Max. Dis. Rs. 20,000/-



BELLDI

Belldi Fashion - Ratnapura

- Credit - 20%
- Debit - 10%

30th, 31st March & 06th, 07th, 10th April

Max. Dis. Rs. 20,000/-

To apply for a new credit card, type "APPLY" and send an SMS to 076 700 2400.



Brands Ware House

- Credit - 25%
- Debit - 15%

31st March, 01st & 02nd April
Max. Dis. Rs. 20,000/-



Thilakma City

- Credit - 20%
- Debit - 10%

31st March & 06th April
Max. Dis. Rs. 20,000/-

The Vanta Studios

The Vanta Studios

- Credit - 25%
- Debit - 10%

01st, 02nd April
Max. Dis. Rs. 20,000/-

MIMOSA

Mimosa

- Credit - 25%
- Debit - 10%

01st, 02nd April
Max. Dis. Rs. 20,000/-

BOSS

Boss - Abans

- Credit - Up to 50%
- Debit - Up to 50%

01st, 02nd April
CCC, RC and Selected Abans Elite Showrooms,
Buy Abans



Skechers- Abans

- Credit - Up to 50%
- Debit - Up to 50%

01st, 02nd April
Arcade Independence Square



UNDER ARMOUR

Under Armour -Abans

- Credit - Up to 50%
- Debit - Up to 50%

01st, 02nd April
CCC, Arcade Independence Square,
Buy Abans

TIMES SQUARE

Times Square Watches

- Credit - Up to 25%
- Debit - Up to 25%

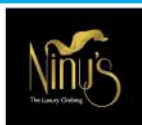
01st, 02nd April
CCC

TITAN

TITAN Watches

- Credit - Up to 35%
- Debit - Up to 35%

01st, 02nd April
CCC, Havelock City Mall,
One Galle Face Mall, Racecourse,
Selected Abans Elite Showrooms



Ninu's - The Luxury Clothing

- Credit - 20%
- Debit - 10%

01st, 02nd April
Max. Dis. Rs. 20,000/-



KANDYGS HANDLOOMS

Kandygs Handloom

- Credit - 20%
- Debit - 10%

01st - 04th April
Max. Dis. Rs. 20,000/-



ATUKORALA TEXTILES

A style for every story

DD Athukorala Textile

- Credit - 20%
- Debit - 10%

01st - 04th April
Max. Dis. Rs. 20,000/-



Athukorala Fashion

- Credit - 20%
- Debit - 15%

01st - 04th April
Max. Dis. Rs. 20,000/-

CHENARA DODGE

Chenara DODGE

- Credit - 25%
- Debit - 15%

01st - 04th April
Max. Dis. Rs. 20,000/-

GANI FASHION (PVT) LTD

Gani Fashion

- Credit - 25%
- Debit - 10%

01st - 12th April
Max. Dis. Rs. 20,000/-

To apply for a new credit card, type "APPLY" and send an SMS to 076 700 2400.



East Star Handlooms

- Credit - 20%
- Debit - 10%

01st - 13th April
Max. Dis. Rs. 20,000/-

Bata

Bata

- Credit - 20%
- Debit - 10%

01st - 14th April
Max. Dis. Rs. 20,000/-

FIG

FIG

- Credit - 30%
- Debit - 15%

01st - 15th April
Max. Dis. Rs. 20,000/-

amanté

Amante

- Credit - 30%
- Debit - 10%

02nd, 03rd April
Max. Dis. Rs. 20,000/-

ODEL

ODEL

- Credit - 25%
- Debit - 10%

01st, 03rd April
Max. Dis. Rs. 30,000/-

GALLERIA

Galleria

- Credit - 25%
- Debit - 10%

02nd, 03rd April
Max. Dis. Rs. 30,000/-

cotton COLLECTION

Cotton Collection

- Credit - 25%
- Debit - 10%

02nd, 03rd April
Max. Dis. Rs. 30,000/-

COCO

BY COTTON COLLECTION

COCO

- Credit - 25%
- Debit - 10%

02nd, 03rd April
Max. Dis. Rs. 30,000/-



LUV SL

- Credit - 25%
- Debit - 10%

02nd, 03rd April
Max. Dis. Rs. 30,000/-



Levi's

- Credit - 25%
- Debit - 10%

02nd, 03rd April
Max. Dis. Rs. 30,000/-

Calvin Klein

Calvin Klein

- Credit - 25%
- Debit - 10%

02nd, 03rd April
Max. Dis. Rs. 30,000/-

TOMMY HILFIGER

Tommy Hilfiger

- Credit - 25%
- Debit - 10%

02nd, 03rd April
Max. Dis. Rs. 30,000/-



Guess

- Credit - 25%
- Debit - 10%

02nd, 03rd April
Max. Dis. Rs. 30,000/-

A | X

ARMANI EXCHANGE

Armani Exchange

- Credit - 25%
- Debit - 10%

02nd, 03rd April
Max. Dis. Rs. 30,000/-

Samsonite

Samsonite

- Credit - 25%
- Debit - 10%

02nd, 03rd April
Max. Dis. Rs. 30,000/-

To apply for a new credit card, type "APPLY" and send an SMS to 076 700 2400.

ALDO

- ALDO
- Credit - 25%
 - Debit - 10%

02nd, 03rd April
Max. Dis. Rs. 30,000/-



- Nike
- Credit - 25%
 - Debit - 10%

02nd, 03rd April
Max. Dis. Rs. 30,000/-



- Adidas - One Galle Face Mall
- Credit - 25%
 - Debit - 10%

02nd, 03rd April
Max. Dis. Rs. 30,000/-



- Adidas Originals - One Galle Face Mall
- Credit - 25%
 - Debit - 10%

02nd, 03rd April
Max. Dis. Rs. 30,000/-

SKECHERS

- Skechers - One Galle Face Mall
- Credit - 25%
 - Debit - 10%

02nd, 03rd April
Max. Dis. Rs. 30,000/-

POLO

RALPH LAUREN

- Ralph Lauren - ODEL - One Galle Face Mall
- Credit - 25%
 - Debit - 10%

02nd, 03rd April
Max. Dis. Rs. 30,000/-

FURLA

SINCE 1927 ITALY

- Furla
- Credit - 25%
 - Debit - 10%

02nd, 03rd April
Max. Dis. Rs. 30,000/-

DIESEL

- Diesel
- Credit - 25%
 - Debit - 10%

02nd, 03rd April
Max. Dis. Rs. 30,000/-



- Fossil
- Credit - 25%
 - Debit - 10%

02nd, 03rd April
Max. Dis. Rs. 30,000/-

International Watches

- International Watches & Sunglasses
- Credit - 25%
 - Debit - 10%

02nd, 03rd April
Max. Dis. Rs. 30,000/-



- Luxe Bags
- Credit - 25%
 - Debit - 10%

02nd, 03rd April
Max. Dis. Rs. 30,000/-

yamamay

- Yamamay
- Credit - 25%
 - Debit - 10%

02nd, 03rd April
Max. Dis. Rs. 30,000/-

CARPISA

- Carpisa
- Credit - 25%
 - Debit - 10%

02nd, 03rd April
Max. Dis. Rs. 30,000/-



- Mothercare
- Credit - 25%
 - Debit - 10%

02nd, 03rd April
Max. Dis. Rs. 30,000/-



- The Toy Store
- Credit - 25%
 - Debit - 10%

02nd, 03rd April
Max. Dis. Rs. 30,000/-

To apply for a new credit card, type "APPLY" and send an SMS to 076 700 2400.

Clarks

Clarks - Colombo City Centre

- Credit - 25%
- Debit - 10%

02nd, 03rd April
Max. Dis. Rs. 30,000/-

VERO MODA®

Vero Moda

- Credit - 25%
- Debit - 10%

02nd, 03rd April
Max. Dis. Rs. 30,000/-

ABSOLUTE

Absolute

- Credit - 25%
- Debit - 15%

02nd, 03rd April
Max. Dis. Rs. 25,000/-



DI Leather

- Credit - 20%
- Debit - 10%

02nd, 03rd April
Max. Dis. Rs. 20,000/-,
Except School Shoes & Safety Shoes

NOLIMIT®
Great Value. Big Smiles.

Nolimit

- Credit - 20%

03rd April
Max. Dis. Rs. 20,000/-

Cotton Island

Cotton Island

- Credit - 20%
- Debit - 10%

03rd, 04th April
Max. Dis. Rs. 20,000/-



Pradeepa Textile - Kamburupitiya

- Credit - 20%
- Debit - 10%

03rd, 04th April
Max. Dis. Rs. 20,000/-

TheCasualClub
for your dream dress.

Casual Club

- Credit - 15%
- Debit - 10%

03rd, 04th April
Max. Dis. Rs. 20,000/-

MONDY
SEVEN EIGHT

Mondy

- Credit - 25%
- Debit - 15%

04th, 05th April
Max. Dis. Rs. 20,000/-

CIB
SHOPPING CENTRE

CIB Shopping Centre

- Credit - 20%
- Debit - 10%

04th, 05th April
Max. Dis. Rs. 6,000/-

CIB
CURTAINS

CIB Curtains

- Credit - 20%
- Debit - 10%

04th, 05th April
Max. Dis. Rs. 6,000/-

HOUSE OF TAILORS
ESTEEMED TAILORING SINCE 1977

Wijaya House of Trailers

- Credit - 20%
- Debit - 10%

04th, 05th April
Max. Dis. Rs. 6,000/-



Wijaya Saree Mandiraya

- Credit - 20%
- Debit - 10%

04th, 05th April
Max. Dis. Rs. 6,000/-

AriEllè

Ari Elle

- Credit - 20%
- Debit - 10%

04th, 05th April
Max. Dis. Rs. 6,000/-

DSI
SRI LANKA'S NO. 1 FOOTWEAR

DSI Showrooms

- Credit - 15%
- Debit - 10%

04th, 05th April
Max. Dis. Rs. 20,000/-

To apply for a new credit card, type "APPLY" and send an SMS to 076 700 2400.

DSI

SRI LANKA'S NO. 1 FOOTWEAR

DSI Factory Outlets

- Credit - 15%
- Debit - 10%

04th, 05th April

Max. Dis. Rs. 20,000/-

DSI

SRI LANKA'S NO. 1 FOOTWEAR

DSI Franchise Outlets

- Credit - 15%
- Debit - 10%

04th, 05th April

Max. Dis. Rs. 20,000/-

DSI PREMIER

DSI Premier

- Credit - 20%
- Debit - 10%

04th, 05th April

Max. Dis. Rs. 20,000/-



ADIDAS

- Credit - 20%
- Debit - 10%

04th, 05th April

Max. Dis. Rs. 20,000/-

Clarks

SHOEMAKERS SINCE 1825

- Credit - 20%
- Debit - 10%

04th, 05th April

Max. Dis. Rs. 20,000/-

asics

- Credit - 20%
- Debit - 10%

04th, 05th April

Max. Dis. Rs. 20,000/-

FILA®

FILA

- Credit - 20%
- Debit - 10%

04th, 05th April

Max. Dis. Rs. 20,000/-

MODARE
ultraconforto

MODARE

- Credit - 20%
- Debit - 10%

04th, 05th April

Max. Dis. Rs. 20,000/-

PUMA

PUMA

- Credit - 20%
- Debit - 10%

04th, 05th April

Max. Dis. Rs. 20,000/-

RED TAPE

RED TAPE

- Credit - 20%
- Debit - 10%

04th, 05th April

Max. Dis. Rs. 20,000/-

Reebok



REEBOK

- Credit - 20%
- Debit - 10%

04th, 05th April

Max. Dis. Rs. 20,000/-

VON WELIX®

GERMANY

VON WELIX

- Credit - 20%
- Debit - 10%

04th, 05th April

Max. Dis. Rs. 20,000/-



W

- Credit - 20%
- Debit - 10%

04th, 05th April

Max. Dis. Rs. 20,000/-

aurelia

Aurelia

- Credit - 20%
- Debit - 10%

04th, 05th April

Max. Dis. Rs. 20,000/-



U.S. POLO ASSN.

SINCE 1890

US Polo

- Credit - 20%
- Debit - 10%

04th, 05th April

Max. Dis. Rs. 20,000/-

To apply for a new credit card, type **"APPLY"** and send an SMS to **076 700 2400**.



AVI

- Credit - 20%
- Debit - 10%

04th, 05th April

Max. Dis. Rs. 20,000/-



VIZZANO
Vissano

- Credit - 20%
- Debit - 10%

04th, 05th April

Max. Dis. Rs. 20,000/-



Moleka

- Credit - 20%
- Debit - 10%

04th, 05th April

Max. Dis. Rs. 20,000/-

molekinha

Molekinha

- Credit - 20%
- Debit - 10%

04th, 05th April

Max. Dis. Rs. 20,000/-



Saman Fashion - Giriulla

- Credit - 20%
- Debit - 10%

04th - 14th April

Max. Dis. Rs. 20,000/-

Sunimal's

"Fashion in vogue for all ages"
Get all your handloom products under one roof...

Sunimal's Handloom

- Credit - 25%
- Debit - 10%

05th - 14th April

Max. Dis. Rs. 20,000/-



FENDI
FASHION

Fendi Fashion - Chilaw

- Credit - 15%

05th, 06th April

Max. Dis. Rs. 20,000/-

LAVENDER LADY

116 Kulu Road, Colombo 20
Colombia, Sri Lanka
+94 76 737 9778

Lavender lady

- Credit - 20%
- Debit - 10%

05th - 07th April

Max. Dis. Rs. 20,000/-

aditi
infinity

Aditi Infinity

- Credit - 25%
- Debit - 15%

05th - 07th April

Max. Dis. Rs. 20,000/-



BEVERLY
STREET

Beverly Street

- Credit - 50%
- Debit - 50%

06th, 07th April

Max. Dis. Rs. 20,000/-

babycare®

Baby Care

- Credit - 25%
- Debit - 10%

06th, 07th April

Max. Dis. Rs. 20,000/-

LASH-LOOK

Lash look

- Credit - 25%
- Debit - 10%

06th, 07th April

Max. Dis. Rs. 20,000/-



Guys & Girls

- Credit - 20%
- Debit - 10%

06th, 07th April

Max. Dis. Rs. 20,000/-

nest

PREMIUM DESIGNER WEAR

Nest

- Credit - 20%
- Debit - 10%

06th, 07th April

Max. Dis. Rs. 20,000/-

deepam's
All kinds of fabrics

Deepams

- Credit - 20%
- Debit - 10%

06th - 08th April

Max. Dis. Rs. 20,000/-

To apply for a new credit card, type "APPLY" and send an SMS to 076 700 2400.



Deepams Boutique

- Credit - 20%
- Debit - 10%

06th - 08th April

Max. Dis. Rs. 20,000/-

mackly

Sleepwear | Loungewear | Inner-wear | Seda

Mackly

- Credit - 25%
- Debit - 10%

06th - 08th April

Max. Dis. Rs. 20,000/-,
On Selected Items



Kiddoz

- Credit - 20%
- Debit - 10%

06th - 10th April

Max. Dis. Rs. 20,000/-



panthera

Panthera Style

- Credit - 30%
- Debit - 20%

07th, 08th April

Max. Dis. Rs. 20,000/-



Kids Walk

- Credit - 20%
- Debit - 10%

08th - 10th April

Max. Dis. Rs. 20,000/-,
Min. Bill Val. Rs. 10,000/-



Linsa Fashion

- Credit - 20%
- Debit - 10%

08th, 11th April

Max. Dis. Rs. 20,000/-



YOUR OWN VIBE

Wybe Fashion - Ja-Ela

- Credit - 20%
- Debit - 10%

08th - 12th April

Max. Dis. Rs. 20,000/-



Domingoes - Moratuwa

- Credit - 25%
- Debit - 10%

09th, 10th April

Max. Dis. Rs. 25,000/-



Primark - Mahiyanganaya

- Credit - 10%
- Debit - 5%

10th April

Max. Dis. Rs. 20,000/-



Molly Boulevard

- Credit - 25%
- Debit - 10%

11th - 13th April

Max. Dis. Rs. 20,000/-

BOCCARDS

Unstoppable Discounts

Enjoy seasonal shopping with a wave of discounts



TRAVEL & LEISURE UP TO

50%

Travel & Leisure එක්ක නිවාඩුව විඳින්න

Credit / Debit Card වලට නිකට් Fit වෙත Discount රැල්ල



Heritance Tea Factory
www.aitkenspencehotels.com
Inquiries - 011 230 8408

• Credit - Up to 41%

Booking Period - 20th Mar - 30th Apr 2024
Stay Period - 01st Apr - 30th Jun 2024



Turyaa Kalutara
www.aitkenspencehotels.com
Inquiries - 011 230 8408

• Credit - Up to 42%

Booking Period - 20th Mar - 30th Apr 2024
Stay Period - 01st Apr - 30th Jun 2024



Maalu Maalu Resort & Spa - Passekudah
www.themacollection.com
Promo Code - BOC24

• Credit - 15%
• Debit - 15%

Booking & Stay Period - Till 30th Apr 2024
(Blackout Period - 06th - 14th Apr 2024)



Aliya Resort & Spa - Sigiriya
www.themacollection.com
Promo Code - BOC24

• Credit - 15%
• Debit - 15%

Booking & Stay Period - Till 30th Apr 2024
(Blackout Period - 06th - 14th Apr 2024)



Kithala Resort Tissamaharama - Yala
www.themacollection.com
Promo Code - BOC24

• Credit - 15%
• Debit - 15%

Booking & Stay Period - Till 30th Apr 2024
(Blackout Period - 06th - 14th Apr 2024)



Mountbatten Bungalow Kandy
www.themacollection.com
Promo Code - BOC24

• Credit - 15%
• Debit - 15%

Booking & Stay Period - Till 30th Apr 2024
(Blackout Period - 06th - 14th Apr 2024)

To apply for a new credit card, type "APPLY" and send an SMS to 076 700 2400.



Scottish Planter Glendevon Bungalow - Ragala
www.themacollection.com
Promo Code - BOC24

- **Credit - 15%**
- **Debit - 15%**

Booking & Stay Period - Till 30th Apr 2024
(Blackout Period - 06th - 14th Apr 2024)



Wild Glamping Knuckles
www.themacollection.com
Promo Code - BOC24

- **Credit - 15%**
- **Debit - 15%**

Booking & Stay Period - Till 30th Apr 2024
(Blackout Period - 06th - 14th Apr 2024)



Tea & Experience Factory Mandaramnuwara
www.themacollection.com
Promo Code - BOC24

- **Credit - 15%**
- **Debit - 15%**

Booking & Stay Period - Till 30th Apr 2024
(Blackout Period - 06th - 14th Apr 2024)



Wild Glamping Gal Oya
www.themacollection.com
Promo Code - BOC24

- **Credit - 15%**
- **Debit - 15%**

Booking & Stay Period - Till 30th Apr 2024
(Blackout Period - 06th - 14th Apr 2024)



Thaala Bentota
www.brownsotels.com
Promo Code - BOC24

- **Credit - 10%**
- **Debit - 10%**

Booking Period - 15th Mar - 10th Apr 2024
Stay Period - 01st - 30th Apr 2024



Hotel Sigiriya
www.brownsotels.com
Promo Code - BOC24

- **Credit - 10%**
- **Debit - 10%**

Booking Period - 15th Mar - 10th Apr 2024
Stay Period - 01st - 30th Apr 2024



Dickwella Resort & Spa
www.brownsotels.com
Promo Code - BOC24

- **Credit - 10%**
- **Debit - 10%**

Booking Period - 15th Mar - 10th Apr 2024
Stay Period - 01st - 30th Apr 2024



Club Hotel Dolphin
www.brownsotels.com
Promo Code - BOC24

- **Credit - 10%**
- **Debit - 10%**

Booking Period - 15th Mar - 10th Apr 2024
Stay Period - 01st - 30th Apr 2024



The Clam Resort & Spa
www.brownsotels.com
Promo Code - BOC24

- **Credit - 10%**
- **Debit - 10%**

Booking Period - 15th Mar - 10th Apr 2024
Stay Period - 01st - 30th Apr 2024



Amaya Lake
Reservations - 011 476 7800
Web - www.amayaresorts.com
Promo Code - BOC24

- **Credit - 15%**
- **Debit - 15%**

Booking Period - 20th - 22nd Mar 2024
Stay Period - Till 30th Jun 2024



Amaya Hills
Reservations - 011 476 7800
Web - www.amayaresorts.com
Promo Code - BOC24

- **Credit - 15%**
- **Debit - 15%**

Booking Period - 20th - 22nd Mar 2024
Stay Period - Till 30th Jun 2024



Amaya Beach
Reservations - 011 476 7800
Web - www.amayaresorts.com
Promo Code - BOC24

- **Credit - 15%**
- **Debit - 15%**

Booking Period - 20th - 22nd Mar 2024
Stay Period - Till 30th Jun 2024



Oak Ray Regency - Kandy
Reservations - 077 220 8699
081 238 9141

- **Credit - Up to 20%**

Till 30th April 2024



Oak Ray Serene Garden Kandy
Reservations - 077 220 8699
081 222 7915

- **Credit - Up to 20%**

Till 30th April 2024



Senani Hotel - Kandy
Reservations - 077 220 8699
081 223 5118

- **Credit - Up to 20%**

Till 30th April 2024



Pelwehera Village Resort
Dambulla
Reservations - 077 220 8699
066 492 8334

- **Credit - Up to 20%**

Till 30th April 2024



Fresco Water Villa - Sigiriya
Reservations - 077 220 8699
066 228 6161

- **Credit - Up to 20%**

Till 30th April 2024



Oak Ray Elephant Lake
Reservations - 077 220 8699
066 227 0356

- **Credit - Up to 20%**

Till 30th April 2024



Oak Ray Tea Bush - Ramboda
Reservations - 077 220 8699
052 225 9787

- **Credit - Up to 20%**

Till 30th April 2024



Oak Ray Summer Hill Breeze
Nuwara Eliya
Reservations - 077 220 8699
052 223 4437

- **Credit - Up to 20%**

Till 30th April 2024



Oak Ray Ella Gap - Ella
Reservations - 077 220 8699
057 222 8528

- **Credit - Up to 20%**

Till 30th April 2024



Oak Ray Wild Yala
Thissamaramaya
Reservations - 077 220 8699
047 223 9401

- **Credit - Up to 20%**

Till 30th April 2024



Oak Ray Beach
Kuda Waskaduwa
Reservations - 077 220 8699
038 229 4744

- **Credit - Up to 20%**

Till 30th April 2024



Amara Forest Hotel Sigiriya
Reservations - 077 003 8303

- **Credit - 30%**
- **Debit - 30%**

Till 31st May 2024



Amara Sky Hotel Kandy
Reservations - 077 003 8303

- **Credit - 30%**
- **Debit - 30%**

Till 31st May 2024



EKHO Safari - Tissamaharama
Reservations - 011 776 5555
077 238 7777
Email: reservations@ekhohotels.com

- **Credit - 20%**
- **Debit - 20%**

Booking & Stay Period
Till 31st Jul 2024



EKHO Sigiriya
Reservations - 011 776 5555
077 238 7777
Email: reservations@ekhohotels.com

- **Credit - 20%**
- **Debit - 20%**

Booking & Stay Period
Till 31st Jul 2024



Hotel Suisse - Kandy
Reservations - 076 769 3848
Email: chathura.maddumawithana@kandyhotels.lk

- **Credit - 20%**
- **Debit - 20%**

Booking & Stay Period
Till 31st Jul 2024



Queens Hotel - Kandy
Reservations - 076 769 3848
Email: chathura.maddumawithana@kandyhotels.lk

- **Credit - 20%**
- **Debit - 20%**

Booking & Stay Period
Till 31st Jul 2024



EKHO Surf - Bentota
Reservations - 011 776 5555
077 238 7777
Email: reservations@ekhohotels.com

- **Credit - 20%**
- **Debit - 20%**

Booking & Stay Period
Till 31st Jul 2024



EKHO Ella
Reservations - 011 776 5555
077 238 7777
Email: reservations@ekhohotels.com

- **Credit - 20%**
- **Debit - 20%**

Booking & Stay Period
Till 31st Jul 2024



EKHO Weligama
Reservations - 011 776 5555
077 238 7777
Email: reservations@ekhohotels.com

- **Credit - 20%**
- **Debit - 20%**

Booking & Stay Period
Till 31st Jul 2024



EKHO Lake House
Reservations - 011 776 5555
077 238 7777
Email: reservations@ekhohotels.com

- **Credit - 20%**
- **Debit - 20%**

Booking & Stay Period
Till 31st Jul 2024



Era Beach Thalpe
Reservations - 077 959 4545
011 366 3699

- **Credit - 20%**
- **Debit - 20%**

Till 30th Apr 2024



Apa Villa Thalpe
Reservations - 077 959 4545
011 366 3699

- **Credit - 20%**
- **Debit - 20%**

Till 30th Apr 2024



Joe's Resort Unawatuna
Reservations - 077 959 4545
011 366 3699

- **Credit - 20%**
- **Debit - 20%**

Till 30th Apr 2024



Joes Resorts - Bentota
Reservations - 077 959 4545
011 366 3699

- **Credit - 20%**
- **Debit - 20%**

Till 30th Apr 2024



Giman Free Beach Resort Pasikudah
Reservations - 071 947 4536
065 364 9999

- **Credit - 20%**
- **Debit - 20%**

Till 30th Apr 2024



Kingdom Secret - Kiriella
Reservations - 071 947 4536
065 364 9999

- **Credit - 20%**
- **Debit - 20%**

Till 30th Apr 2024



Hotel Sudu Araliya
Reservations - 027 222 4849
076 531 5390

- **Credit - 25%**
- **Debit - 25%**

Till 30th Apr 2024



Araliya Red Nuwara Eliya
Reservations - 070 470 0829

- **Credit - 10%**
- **Debit - 10%**

Booking & Stay Period
Till 30th Apr 2024
(Blackout Period - 10th - 24th Apr 2024)



Araliya Green Hills Nuwara Eliya
Reservations - 070 351 0402

- **Credit - 10%**
- **Debit - 10%**

Booking & Stay Period
Till 30th Apr 2024
(Blackout Period - 10th - 24th Apr 2024)



Araliya Green City Nuwara Eliya
Reservations - 070 361 2415
052 222 5000

- **Credit - 10%**
- **Debit - 10%**

Booking & Stay Period
Till 30th Apr 2024
(Blackout Period - 10th - 24th Apr 2024)



Lavendish Okrin Hotel Kataragama
Reservations - 075 355 5946

- **Credit - 35%**
- **Debit - 25%**

Till 30th Apr 2024
(Valid on Sunday to Thursday)



Lavendish Wild Wilpattu
Reservations - 075 355 5946

- **Credit - 35%**
- **Debit - 25%**

Till 30th Apr 2024
(Valid on Sunday to Thursday)



Dambulla Country Resort
Reservations - 075 355 5946

- Credit - 35%
- Debit - 25%

Till 30th Apr 2024
(Valid on Sunday to Thursday)



Lavendish Wild Safari Hotel Wasgamuwa
Reservations - 075 355 5946

- Credit - 35%
- Debit - 25%

Till 30th Apr 2024
(Valid on Sunday to Thursday)



Sennya Resorts
Reservations - 077 313 8844

- Credit - 50%
- Debit - 50%

Till 30th Apr 2024



The Thinnai Hotel Jafna
Reservations - 077 455 8220
021 203 0400

- Credit - 25%

Till 30th Apr 2024



Sigiriya Kingdom Gate Hotel Dambulla
Reservations - 077 225 3867
077 742 9000

- Credit - 40%
- Debit - 40%

Till 30th Apr 2024



Cottage 42 - Nuwara Eliya
Reservations - 076 685 7236
091 494 4500

- Credit - 15%
- Debit - 15%

01st Apr - 31st Jul 2024



Birds Park - Polgahawela
Reservations - 076 685 7236
091 494 4500

- Credit - 15%
- Debit - 15%

01st Apr - 31st Jul 2024



South Lake Resort Koggala
Reservations - 076 685 7236
091 494 4500

- Credit - 15%
- Debit - 15%

01st Apr - 31st Jul 2024



Dream Lodge - Hanthana
Reservations - 076 685 7236
091 494 4500

- Credit - 15%
- Debit - 15%

01st Apr - 31st Jul 2024



Gedara Villa - Kalutara
Reservations - 076 685 7236
091 494 4500

- Credit - 15%
- Debit - 15%

01st Apr - 31st Jul 2024



Villa Indrasiriya Ahangama
Reservations - 076 685 7236
091 494 4500

- Credit - 15%
- Debit - 15%

01st Apr - 31st Jul 2024



Sathmin Villa Ahangama
Reservations - 076 685 7236
091 494 4500

- Credit - 15%
- Debit - 15%

01st Apr - 31st Jul 2024



Villa Wijesiriya
Reservations - 076 685 7236
091 494 4500

- Credit - 15%
- Debit - 15%

01st Apr - 31st Jul 2024



Villa Serenity by JAT
Reservations - 077 777 7528

- Credit - 40%
- Debit - 40%

Till 30th Apr 2024



Rice of Life by Tissa Inn
Reservations - 076 464 8070
E-mail: reservations@rice-of-life.lk

- Credit - 20%
- Debit - 20%

Till 31st May 2024



Sea Horse Hotel and Spa
Negombo
Reservations - 077 730 0579
077 770 0579

- **Credit - 20%**
- **Debit - 20%**

Till 30th Apr 2024



Hotel Cassendra - Kandy
Reservations - 077 188 0688

- **Credit - 30%**
- **Debit - 30%**

Till 30th Apr 2024



Tamarind Hill, Galle.
Reservations - 076 316 2648
077 445 6413
Email: luxuryhotels@asialeisure.lk

- **Credit - 20%**
- **Debit - 20%**

Booking & Stay Period
Till 30th Apr 2024



The River House, Balapitiya
Reservations - 076 316 2648
077 445 6413
Email: luxuryhotels@asialeisure.lk

- **Credit - 20%**
- **Debit - 20%**

Booking & Stay Period
Till 30th Apr 2024



Taj Bentota Resort & Spa
Reservations - 034 555 5555

- **Credit - 15%**

Booking Period: Till 31st Mar 2024
Stay Period: 01st Apr - 31st Oct 2024



Athgira River Camp
Reservations - 076 828 9353

- **Credit - 25%**
- **Debit - 25%**

Till 30th Apr 2024



Elephant Trail
Reservations - 076 828 9353

- **Credit - 25%**
- **Debit - 25%**

Till 30th Apr 2024



Hotel Athgira
Reservations - 076 828 9353

- **Credit - 25%**
- **Debit - 25%**

Till 30th Apr 2024



Sungreen Resort - Habarana
Reservations - 066 438 0009
076 675 4040 / 076 805 5050

- **Credit - 40%**
- **Debit - 40%**

Till 30th Aug 2024



Tea Mount Forest
Reservations - 070 192 6600

- **Credit - 25%**
- **Debit - 25%**

Till 30th Apr 2024



The Golden Crown Hotel
Kandy
Reservations - 011 774 3900

- **Credit - 15%**
- **Debit - 15%**

01st May - 15th Jun 2024



The Golden Ridge
Nuwara Eliya
Reservations - 074 334 5722

- **Credit - 15%**
- **Debit - 15%**

01st May - 15th Jun 2024



Olive's Sky Suites - Haputale
Reservations - 077 210 7490

- **Credit - 10%**
- **Debit - 10%**

Till 30th Apr 2024



Olive's Silanway - Haputale
Reservations - 077 210 7490

- **Credit - 10%**
- **Debit - 10%**

Till 30th Apr 2024



Olive's Grand Jumbo
Bandarawela
Reservations - 077 210 7490

- **Credit - 10%**
- **Debit - 10%**

Till 30th Apr 2024



Olive's Regancy - Diyatalawa
Reservations - 077 210 7490

- Credit - 10%
- Debit - 10%

Till 30th Apr 2024



Mirage Colombo
Reservations - 076 673 6000
E-mail: salesmgr@miragecolombo.com

- Credit - 40%
- Debit - 40%

Till 30th Apr 2024



Mirage Kings Cottage
Nuwaraeliya
Reservations - 076 673 6000
E-mail: salesmgr@miragecolombo.com

- Credit - 40%
- Debit - 40%

Till 30th Apr 2024



The Travellers Nest
Kandy
Reservations - 081 222 2633

- Credit - 30%
- Debit - 30%

Till 30th Apr 2024



Serendib Signature Resort
Reservations - 081 205 0006
076 032 4124
E-mail: frontdesk@serendibsignature.com

- Credit - 20%
- Debit - 20%

Till 15th May 2024



The Epitome Hotel
Reservations - 074 200 0689
076 999 0990
E-mail: corporatesales@epitomehotel.com

- Credit - 10%
- Debit - 10%

Till 30th Apr 2024



Sangrilla Hotel
Bandarawela
Reservations - 071 546 2774

- Credit - 25%
- Debit - 25%

Booking Period - Till 30th Apr 2024
Stay Period - Till 30th Oct 2024



Thuduwa Camp
Udawalawe
Reservations - 077 338 3836

- Credit - 25%
- Debit - 25%

Booking Period - Till 30th Apr 2024
Stay Period - Till 30th Oct 2024



Birders Lodge
Sinharaja
Reservations - 077 338 3836

- Credit - 25%
- Debit - 25%

Booking Period - Till 30th Apr 2024
Stay Period - Till 30th Oct 2024



Highcarin Luxury Boutique Hotel
Bandarawela
Reservations - 071 546 2774

- Credit - 25%
- Debit - 25%

Booking Period - Till 30th Apr 2024
Stay Period - Till 30th Oct 2024



Victoria Golf Resort
Digana
Reservations - 071 239 7588
077 718 3433 / E-mail:
reservations@tshospitality.lk

- Credit - Up To 35%
- Debit - Up To 35%

Till 30th Apr 2024



Villa Lagoonscape
Negombo
Reservations - 077 333 3440
077 049 8823
E-mail: reservations@tshospitality.lk

- Credit - Special Offer
- Debit - Special Offer

Till 30th Apr 2024



Kurokawa - Kalutara
Reservations - 077 049 8823
E-mail: reservations@tshospitality.lk

- Credit - Special Offer
- Debit - Special Offer

Till 30th Apr 2024



Kalu's Hideaway
Udawalawa
Reservations - 077 049 8823
071 239 7588
E-mail: reservations@tshospitality.lk

- Credit - Up To 30%
- Debit - Up To 30%

Till 30th Apr 2024



Tropical Life Resort &
Spa
Reservations - 066 203 0300

- Credit - 35%
- Debit - 35%

Till 30th Apr 2024



The Other Corner Nature Resort - Habarana
Reservations - 0773 327 995
E-mail: toc@starrongroup.com

- **Credit - 40%**
- **Debit - 40%**

Till 30th Apr 2024



Range - Kandy
Reservations - 077 025 8258
077 395 9759
E-mail: reservations@therange.lk

- **Credit - 15%**
- **Debit - 15%**

Till 30th Jun 2024



Uma Garden Kandedegara
Reservations - 077 025 8258

- **Credit - 10%**
- **Debit - 10%**

01st - 30th Apr 2024



EVERTON HOLIDAYS
Walden Nuwara Eliya is a luxury
resort located in the heart of
the Nuwara Eliya National Park.

The Walden Nuwara Eliya
Reservations - 076 901 1100
E-mail: reservations@evertonholidays.com

- **Credit - Up To 15%**
- **Debit - Up To 15%**

Till 30th Apr 2024



Tudor Barn - Nuwara Eliya
Reservations - 076 901 1100
E-mail: reservations@evertonholidays.com

- **Credit - Up To 15%**
- **Debit - Up To 15%**

Till 30th Apr 2024



Hide Yala Thissamaharama
Reservations - 076 901 1100
E-mail: reservations@evertonholidays.com

- **Credit - Up To 15%**
- **Debit - Up To 15%**

Till 30th Apr 2024



Kadju House - Tangalle
Reservations - 076 901 1100
E-mail: reservations@evertonholidays.com

- **Credit - Up To 15%**
- **Debit - Up To 15%**

Till 30th Apr 2024



Solar Crab - Pamunugama
Reservations - 076 901 1100
E-mail: reservations@evertonholidays.com

- **Credit - Up To 15%**
- **Debit - Up To 15%**

Till 30th Apr 2024



The Exclusive Boutique hotel on the Beach

Serene Pavilions
Reservations - 070 120 0138

- **Credit - 15%**
- **Debit - 15%**

Booking Period - Till 30th Apr 2024
Stay Period - Till 31st July 2024



OceanFront Condos Nilaveli
Reservations - 076 343 2375

- **Credit - 15%**
- **Debit - 15%**

Till 30th Apr 2024



Fox Resort - Jaffna
Reservations - 074 253 2186
/ 076 308 4518
Email: info@foxresorts.com

- **Credit - 25%**
- **Debit - 25%**

04th Mar - 30th Jun 2024



Fox Resort - Kandy
Reservations - 074 253 2186
/ 076 308 4518
Email: info@foxresorts.com

- **Credit - 25%**
- **Debit - 25%**

04th Mar - 30th Jun 2024



Tea Bush Hotel Nuwara Eliya
Reservations - 052 222 2345
/ 070 446 8351

- **Credit - 40%**
- **Debit - 40%**

Till 31st Oct 2024
(Blackout Period - 10th - 20th Apr 2024)



Grand Beragala
Reservations - 077 725 5492

- **Credit - 10%**
- **Debit - 10%**

01st - 30th Apr 2024



SIGIRIYA KING'S RESORT

Sigiriya King's Resort
Reservations - 077 017 7177
/ 066 772 2700

- **Credit - Up To 20%**
- **Debit - Up To 20%**

01st Apr - 30th Jun 2024

BOC CARDS

Unstoppable Discounts

Enjoy seasonal shopping with a wave of discounts



RESTAURANTS UP TO 25%

කැමති Restaurant එකකට යන්න
Credit / Debit Card චලව හිතව Fit වෙන Discount රැල්ල



Baskin Robbins

- Credit - 20%
- Debit - 10%

Every Thursday (04th - 25th April)
Max. Dis. Rs.5,000/-,
Dine - in & Takeaway Only



Burger King

- Credit - 20%
- Debit - 10%

Every Thursday (04th - 25th April)
Max. Dis. Rs.5,000/-,
Dine - in & Takeaway Only



FAMOUS LOUISIANA CHICKEN

Popeyes

- Credit - 20%
- Debit - 10%

Every Thursday (04th - 25th April)
Max. Dis. Rs.5,000/-,
Dine - in & Takeaway Only



Subway

- Credit - 20%
- Debit - 10%

Every Thursday (04th - 25th April)
Max. Dis. Rs.5,000/-, Only @ Colpetty,
Havelock City Mall, Rajagiriya & Mount Lavinia,
Dine - in & Takeaway Only



CRYSTAL JADE
HONG KONG KITCHEN
港式小館

Crystal Jade

- Credit - 20%
- Debit - 10%

Every Thursday (04th - 25th April)
Max. Dis. Rs.15,000/-,
Dine - in & Takeaway Only



Delifrance

- Credit - 20%
- Debit - 10%

Every Thursday (04th - 25th April)
Max. Dis. Rs.5,000/-,
Dine - in & Takeaway Only

To apply for a new credit card, type "APPLY" and send an SMS to 076 700 2400.



FOOD STUDIO
CONNECT & COLLABORATE

Food Studio Khayaban

• Credit - 20%

01st - 10th April
OGF

Min. Bill Val. Rs. 1,000/-, Max. Dis. Rs. 10,000/-



Authentic Pakistani Cuisine



FOOD STUDIO
CONNECT & COLLABORATE

Food Studio Samba

• Credit - 20%

01st - 10th April
OGF

Min. Bill Val. Rs. 1,000/-, Max. Dis. Rs. 10,000/-



FOOD STUDIO
CONNECT & COLLABORATE

Food Studio Kathi Kanteen

• Credit - 20%

01st - 10th April
OGF

Min. Bill Val. Rs. 1,000/-, Max. Dis. Rs. 10,000/-



FOOD STUDIO
CONNECT & COLLABORATE

Food Studio Sumatran Spice

• Credit - 20%

01st - 10th April
OGF

Min. Bill Val. Rs. 1,000/-, Max. Dis. Rs. 10,000/-



By Far East Indonesia



FOOD STUDIO
CONNECT & COLLABORATE

Food Studio Hotel Manoli

• Credit - 20%

01st - 10th April
OGF

Min. Bill Val. Rs. 1,000/-, Max. Dis. Rs. 10,000/-



Levant Soul Food



FOOD STUDIO
CONNECT & COLLABORATE

Food Studio ShioK

• Credit - 20%

01st - 10th April
OGF

Min. Bill Val. Rs. 1,000/-, Max. Dis. Rs. 10,000/-



Chicken Rice



FOOD STUDIO
CONNECT & COLLABORATE

Food Studio Champion Slice

• Credit - 20%

01st - 10th April
OGF

Min. Bill Val. Rs. 1,000/-, Max. Dis. Rs. 10,000/-



Champion Slice



FOOD STUDIO
CONNECT & COLLABORATE

Food Studio Suksamran Thai

• Credit - 20%

01st - 10th April
OGF

Min. Bill Val. Rs. 1,000/-, Max. Dis. Rs. 10,000/-



Suksamran Thai



FOOD STUDIO
CONNECT & COLLABORATE

Food Studio Tokyo Shokudo

• Credit - 20%

01st - 10th April
OGF

Min. Bill Val. Rs. 1,000/-, Max. Dis. Rs. 10,000/-



Tokyo Shokudo

Japanese Made Affordable



FOOD STUDIO
CONNECT & COLLABORATE

Food Studio China Express

• Credit - 20%

01st - 10th April
OGF

Min. Bill Val. Rs. 1,000/-, Max. Dis. Rs. 10,000/-



China Express



FOOD STUDIO
CONNECT & COLLABORATE

Food Studio Bamboo Boy

• Credit - 20%

01st - 10th April
OGF

Min. Bill Val. Rs. 1,000/-, Max. Dis. Rs. 10,000/-



Bamboo Boy



FOOD STUDIO
CONNECT & COLLABORATE

Food Studio ETC

• Credit - 20%

01st - 10th April
OGF

Min. Bill Val. Rs. 1,000/-, Max. Dis. Rs. 10,000/-



ETC



FOOD STUDIO
CONNECT & COLLABORATE

Food Studio Hot Chook

• Credit - 20%

01st - 10th April
CCC

Min. Bill Val. Rs. 1,000/-, Max. Dis. Rs. 10,000/-



Hot Chook



FOOD STUDIO
CONNECT & COLLABORATE

Food Studio Primo

• Credit - 20%

01st - 10th April
CCC

Min. Bill Val. Rs. 1,000/-, Max. Dis. Rs. 10,000/-



Primo



FOOD STUDIO
CONNECT & COLLABORATE

Food Studio Suksamran Thai

• Credit - 20%

01st - 10th April
CCC

Min. Bill Val. Rs. 1,000/-, Max. Dis. Rs. 10,000/-



Suksamran Thai

To apply for a new credit card, type "APPLY" and send an SMS to 076 700 2400.



FOOD STUDIO
CORRUPT & COLLABORATE

Food Studio



SUMATRAN
SPICE

- By Far East Indonesia -
Sumatran Spice

- Credit - 20%

01st - 10th April
CCC

Min. Bill Val. Rs. 1,000/-, Max. Dis. Rs. 10,000/-



FOOD STUDIO
CORRUPT & COLLABORATE

Food Studio



中国快递
CHINA EXPRESS

China Express

- Credit - 20%

01st - 10th April
CCC

Min. Bill Val. Rs. 1,000/-, Max. Dis. Rs. 10,000/-



FOOD STUDIO
CORRUPT & COLLABORATE

Food Studio



Mughlabar

- Credit - 20%

01st - 10th April
CCC

Min. Bill Val. Rs. 1,000/-, Max. Dis. Rs. 10,000/-



FOOD STUDIO
CORRUPT & COLLABORATE

Food Studio



Champion Slice

- Credit - 20%

01st - 10th April
CCC

Min. Bill Val. Rs. 1,000/-, Max. Dis. Rs. 10,000/-



FOOD STUDIO
CORRUPT & COLLABORATE

Food Studio



ETC

- Credit - 20%

01st - 10th April
CCC

Min. Bill Val. Rs. 1,000/-, Max. Dis. Rs. 10,000/-



FOOD STUDIO
CORRUPT & COLLABORATE

Food Studio



東京 食堂
TOKYO
SHOKUDO

JAPANESE MADE AFFORDABLE

Tokyo Shokudo

- Credit - 20%

01st - 10th April
CCC

Min. Bill Val. Rs. 1,000/-, Max. Dis. Rs. 10,000/-



Colombo City Hotels
Private Limited
Colombo City Hotel

- Credit - 25%
- Debit - 10%

15th March - 30th April
Max. Dis. - Rs. 5,000/-

VIRTICLE
BY JETWING

Virticle by Jetwing

- Credit - 20%

15th March - 30th April
Max. Dis. - Rs. 7,500/-
Min. Bill Val. - Rs. 10,000/-

Jetwing BLUE
NEGOMBO - SRI LANKA

Jetwing Blue - The Kitchen

- Credit - 20%

15th March - 30th April
Max. Dis. - Rs. 7,500/-
Min. Bill Val. - Rs. 10,000/-

Jetwing LAGOON
NEGOMBO - SRI LANKA

Jetwing Lagoon - Blue Lagoon

- Credit - 20%

15th Mar - 30th April
Max. Dis. - Rs. 7,500/-
Min. Bill Val. - Rs. 10,000/-

Jetwing LIGHTHOUSE
GALLE - SRI LANKA

Jetwing Lighthouse - Cardamom Cafe

- Credit - 20%

15th Mar - 30th April
Max. Dis. - Rs. 7,500/-
Min. Bill Val. - Rs. 10,000/-

Jetwing COLOMBO SEVEN
COLOMBO - SRI LANKA

Jetwing Colombo Seven - Ward 7

- Credit - 20%

15th Mar - 30th April
Max. Dis. - Rs. 7,500/-
Min. Bill Val. - Rs. 10,000/-

Jetwing SEA
NEGOMBO - SRI LANKA

Jetwing Sea - Café C

- Credit - 20%

15th Mar - 30th April
Max. Dis. - Rs. 7,500/-
Min. Bill Val. - Rs. 10,000/-

JIE JIE BEACH by Jetwing
PANJALURA - SRI LANKA

Jie Jie Beach by Jetwing -
All Day Dining Restaurant

- Credit - 20%

15th Mar - 30th April
Max. Dis. - Rs. 7,500/-
Min. Bill Val. - Rs. 10,000/-

Jetwing JAFFNA
JAFFNA - SRI LANKA

Jetwing Jaffna - Peninsula

- Credit - 20%

15th Mar - 30th April
Max. Dis. - Rs. 7,500/-
Min. Bill Val. - Rs. 10,000/-

To apply for a new credit card, type "APPLY" and send an SMS to 076 700 2400.



Café Noir (Pvt) Ltd

- Credit - 20%
- Debit - 10%

01st April - 30th April
Max. Dis. - Rs. 5,000/-



Burley

- Credit - 20%
- Debit - 10%

18th, 19th March
Max. Dis. - Rs. 5,000/-



Olive's View Point - Haputale

- Credit - 10%
- Debit - 10%

Till 30th April



Olive's City Center - Haputale

- Credit - 10%
- Debit - 10%

Till 30th April



Olive's Mains - Bandarawela

- Credit - 10%
- Debit - 10%

Till 30th April



Olive's Smooth - Bandarawela

- Credit - 10%
- Debit - 10%

Till 30th April



Olive's Food Court - Badulla

- Credit - 10%
- Debit - 10%

Till 30th April



Golden Hill Tea Center - Haputale

- Credit - 10%
- Debit - 10%

Till 30th April



Lettuce and Cabbage by Olives - Haputale

- Credit - 10%
- Debit - 10%

Till 30th April



Water's Edge - Pranzo

- Credit - 20%

01st - 30th April
Max. Dis. - Rs. 5,000/-



Water's Edge - Kobe

- Credit - 20%

01st - 30th April
Max. Dis. - Rs. 5,000/-



Water's Edge - Thunapaha

- Credit - 20%

01st - 30th April
Max. Dis. - Rs. 5,000/-



Water's Edge - Bavarian Garden

- Credit - 20%

01st - 30th April
Max. Dis. - Rs. 5,000/-



Water's Edge - Boardwalk

- Credit - 20%

01st - 30th April
Max. Dis. - Rs. 5,000/-



Indian Affairs

- Credit - 20%
- Debit - 10%

15th March - 30th April
Max. Dis. - Rs. 5,000/-
(Colombo 5, Nawata, Mount Lavinia, Thalawathugoda,
Crescat Boulevard, Wellisara, Maharagama)



Full'r Burgers

- Credit - 20%
- Debit - 10%

15th March - 30th April
 Max. Dis. - Rs. 5,000/-
 (Colombo 5, Nawala, Mount Lavinia, Thalawathugoda,
 Crescat Boulevard, Welisara, Maharagama)



Solo Bowl

- Credit - 20%
- Debit - 10%

15th March - 30th April
 Max. Dis. - Rs. 5,000/-
 (Colombo 5, Nawala, Mount Lavinia, Thalawathugoda,
 Crescat Boulevard, Welisara, Maharagama)



Wasthi Restaurant - Narahenpita

- Credit - 20%

15th March - 15th April
 Max. Dis. - Rs. 5,000/-



TUTANKHAMUN LOUNGE

Hotel Royal Ramesses - Seeduwa

- Credit - 20%

15th March - 15th April
 Max. Dis. - Rs. 5,000/-



AKHENATEN SKY LOUNGE

Hotel Royal Ramesses - Seeduwa

- Credit - 20%

15th March - 15th April
 Max. Dis. - Rs. 5,000/-

BOCGARDS

Unstoppable Discounts

Enjoy seasonal shopping with a wave of discounts



HEALTH & BEAUTY

UP TO

80%

Health & Beauty එක්ක Fun එකේ ඉන්න
Credit / Debit Card වලට හිතට Fit වෙන Discount රැල්ල



Wickramarachchi Opticians

- Credit - Up to 30%
- Debit - Up to 30%

Till 30th April

On Selected Products



D.S. Jayasinghe Opticians

- Credit - Up to 20%
- Debit - Up to 20%

Till 30th April

On Selected Products

Teleseen

Your Smart Choice

Teleseen

- Credit - Up to 80%
- Debit - Up to 80%

Till 30th April

On Selected Products

Eric Rajapakse

Eric Rajapakse Opticians

- Credit - 15%
- Debit - 15%

Till 30th April

Valid for Advance Level Hearing Aids



SPA CEYLON
AYURVEDA WELLNESS

Spa Ceylon

- Credit - 10%

08th - 10th April

Min. Bill Val. Rs. 6,000/- ,
Max. Dis. Rs. 5,000/-, (On Selected Outlets)



vasan
Eye Care Hospital

Vasan Eye Care Hospital

- Credit - Up to 50%
- Debit - Up to 50%

Till 30th April

On Selected Products

To apply for a new credit card, type "APPLY" and send an SMS to 076 700 2400.



Wide Vision Optic

- Credit - Up to 50%
- Debit - Up to 50%

Till 30th April

On Selected Products

BOC CARDS

Unstoppable Discounts

Enjoy seasonal shopping with a wave of discounts



ONLINE

UP TO

50%

Online Shopping කරම fun වෙන්න

Credit / Debit Card වලට හිතට Fit වෙන Discount රැලීම

 mysoftlogic.lk

mysoftlogic.lk

- Credit - Up to 50%
- Debit - Up to 50%

Till 30th April

On Selected Products

SINGER

singersl.com

- Credit - Up to 40%
- Debit - Up to 40%

Till 30th April

On Selected Products

 takas.lk
Genuine Products
Genuine Prices

takas.lk

- Credit - Up to 15%
- Debit - Up to 15%

Till 30th April

On Selected Products

 HARITHAWELI
READY-MIX

harithaweli.lk

- Credit - 20%
- Debit - 20%

Till 30th April

Max. Discount - Rs.5,000/-

 **LUMALA**

lumala.lk

- Credit - 25%
- Debit - 25%

Till 30th April

On Selected Products

 Nils

nilsonline.lk

- Credit - 20%
- Debit - 10%

16th, 17th March

Max. Discount - Rs.20,000/-

To apply for a new credit card, type "APPLY" and send an SMS to 076 700 2400.



kellyfelder.com

- Credit - 20%
- Debit - 10%

17th, 18th March

Max. Dis. Rs. 20,000/-

(Promo Codes - Credit - BOC, Debit - BOC10)



REDVERS
BULLER
REDVERSBULLER.CO.UK

redversbuller.co.uk

- Credit - 20%
- Debit - 10%

17th, 18th March

Max. Dis. Rs. 20,000/-

(Promo Codes - Credit - BOC, Debit - BOC10)

SCYLIA

SCYLIA ZELUS

scyllazelus.com

- Credit - 20%
- Debit - 10%

17th, 18th March

Max. Dis. Rs. 20,000/-

(Promo Codes - Credit - BOC, Debit - BOC10)



tkw.lk

- Credit - 25%
- Debit - 15%

17th, 18th March
& 03rd, 04th April

Max. Dis. Rs. 20,000/-

COOL PLANET
LIFE IN STYLE

coolplanet.lk

- Credit - 20%
- Debit - 10%

21st, 22nd March

Max. Dis. Rs. 20,000/-



edgecasual.com

- Credit - 15%
- Debit - 15%

21st, 22nd March

Max. Dis. Rs. 20,000/-



tfo.lk

- Credit - 25%
- Debit - 15%

21st, 22nd, 31st March
& 01st April

Max. Dis. Rs. 20,000/-



one fashionable experience

springandsummer.lk

- Credit - 25%
- Debit - 10%

22nd March &
05th, 06th April

Max. Dis. Rs. 20,000/-



daraz.lk

- Credit - 10%

Every Friday
22nd March - 26th April

Max. Dis. Rs. 1,000/-



daraz.lk

- Debit - 10%

Every Friday
22nd March - 26th April

Min. Bill Rs. 2,500/-, Max. Dis. Rs. 400/-

Diliganz

Member of Damro Group

online.diliganz.com

- Credit - 25%
- Debit - 10%

23rd, 24th March

Max. Dis. Rs. 12,500/-



catchme.lk

- Credit - Up to 10%
- Debit - Up to 10%

25 March - 10 April

Max. Dis. Rs. 2,000/-, On Selected Items



tudo.lk

- Credit - 15%
- Debit - 15%

25th March - 25th April

Max. Dis. Rs. 10,000/-

LEVEL
OUTFITTERS

Clothing • Accessories

leveloutfitters.com

- Credit - 20%
- Debit - 10%

25th, 26th March

Max. Dis. Rs. 20,000/-



mansion.lk

- Credit - 20%
- Debit - 10%

26th March - 20th April

Max. Dis. Rs. 20,000/-



hameedia.com

- Credit - 25%
- Debit - 10%

27th, 28th March
Max. Dis. Rs. 25,000/-



signature.lk

- Credit - 25%
- Debit - 10%

27th, 28th March
Max. Dis. Rs. 25,000/-



daraz.lk

- Credit - 10%

27th March - 08th April
Min. Bill Rs. 3,000/-, Max. Dis. Rs. 5,000/-



daraz.lk

- Debit - 10%

27th March - 08th April
Min. Bill Rs. 500/-, Max. Dis. Rs. 1,000/-



wasi.lk

- Credit - 20%
- Debit - 10%

27th March & 08th, 27th April
Max. Dis. Rs. 30,000/-



emerald.lk

- Credit - 25%
- Debit - 10%

28th, 29th March
Max. Dis. Rs. 25,000/-



crocodilesrilanka.com

- Credit - 25%
- Debit - 10%

28th, 29th March
Max. Dis. Rs. 25,000/-



dilferclothing.com

- Credit - 25%
- Debit - 15%

28th March & 03rd April
Max. Dis. Rs. 20,000/-



zigzag.lk

- Credit - 30%
- Debit - 20%

29th - 31st March
Max. Dis. Rs. 30,000/-
(Promo Codes - Credit - BOC30/ Debit - BOCD20)



libera.lk

- Credit - 25%
- Debit - 15%

29th - 31st March
Max. Dis. Rs. 20,000/-



fashionbug.lk

- Credit - 25%
- Debit - 10%

29th, 30th March & 08th April
Max. Dis. Rs. 25,000/-



lavivente.lk

- Credit - 25%
- Debit - 10%

29th - 31st March & 05th - 07th April
Max. Dis. Rs. 20,000/-



mimosaforever.com

- Credit - 25%
- Debit - 10%

01st, 02nd April
Max. Dis. Rs. 20,000/-



chenaradodge.lk

- Credit - 25%
- Debit - 15%

01st - 04th April
Max. Dis. Rs. 20,000/-



figclothingsl.com

- Credit - 20%
- Debit - 10%

01st - 15th April
Max. Dis. Rs. 20,000/-

Bata

bata.lk

- Credit - 20%
- Debit - 10%

01st - 14th April

Max. Dis. Rs. 20,000/-

ProMate™

promateworld.com

- Credit - 30%
- Debit - 25%

01st - 30th April

Max. Dis. Rs. 10,000/-

ABSOLUTE

absolutebasics.lk

- Credit - 25%
- Debit - 15%

02nd, 03rd April

Max. Dis. Rs. 25,000/-

ODEL.LK

odel.lk

- Credit - 25%
- Debit - 10%

02nd, 03rd April

Max. Dis. Rs. 30,000/-

NOLIMIT®

nolimit.lk

- Credit - 20%

03rd April

Max. Dis. Rs. 20,000/-

Buy online from  www.dsifootcandy.lk

dsifootcandy.lk

- Credit - 20%
- Debit - 10%

04th, 05th April

Max. Dis. Rs. 20,000/-

MONDY

SEVEN EIGHT

mondy78.com

- Credit - 25%
- Debit - 15%

04th, 05th April

Max. Dis. Rs. 20,000/-

WISHQUE

wishque.com

- Credit - 20%
- Debit - 10%

05th - 10th April

babycare®

babycare.lk

- Credit - 25%
- Debit - 10%

06th, 07th April

Max. Dis. Rs. 20,000/-

(Promo Codes - Credit - BOC-24C, Debit - BOC-24D)

softlogic GLOMARK

glomark.lk

- Credit - 25%
- Debit - 10%

Every Sunday from 17th March to 31st March & 07th April to 28th April

Min. Bill Val. Rs. 3,500/-

Max Dis. Rs. 2,000/-, Max. qty of 3 kg / units per item

SPA CEYLON

AYURVEDA WELLNESS

lk.spaceylon.com

- Credit - 10%

08th - 10th April

Min. Bill Val. Rs. 6,000/-

Max. Dis. Rs. 5,000/- (Promo Code - BOC10)



attireav.com

- Credit - 20%

25th March - 05th April

Min. Bill Val. Rs. 25,000/-

PickMe™

PickMe Food

- Credit - 25%

01st - 30th April

On Orders Above Rs. 2,000/-
Max. Dis. Rs. 1,500/-

wybe.

YOUR OWN VIBE

wybe.lk

- Credit - 20%
- Debit - 10%

08th - 12th April

Max. Dis. Rs. 20,000/-

bigdeals.lk

bigdeals.lk

- Credit - 10%

08th - 10th April

Max. Dis. Rs. 20,000/-



brownsdeals.com

- Credit - Up to 50%
- Debit - Up to 50%

Till 12th Apr

On Selected Products

BOC CARDS

Unstoppable Discounts

Enjoy seasonal shopping with a wave of discounts



LIFESTYLE UP TO

60%

Lifestyle එක අත් විඳින්න

Credit / Debit Card වලට හිතට Fit වෙන Discount රැල්ල

softlogic

Softlogic

- Credit - Up to 50%
- Debit - Up to 50%

Till 30th April
On Selected Products

softlogic MAX

Softlogic Max

- Credit - Up to 50%
- Debit - Up to 50%

Till 30th April
On Selected Products

Abans

Abans

- Credit - Up to 60%
- Debit - Up to 60%

Till 30th April
On Selected Items

SINGER

Singer

- Credit - Up to 40%
- Debit - Up to 40%

Till 30th April
On Selected Products

Hunters

Hunters

- Credit - Up to 25%
- Debit - Up to 25%

Till 30th April
On Selected Products

CEYLON FURNITURE

Ceylon Furniture

- Credit - 25%
- Debit - 25%

Till 30th April

To apply for a new credit card, type "APPLY" and send an SMS to 076 700 2400.



Arpico Furniture

- Credit - Up to 25%
- Debit - Up to 25%

Till 30th April
On Selected Items



Celcius Solutions

- Credit - 30%
- Debit - 15%

14th - 17th March & 04th - 07th April
Max. Dis.- Rs.10,000/-



Seetha Holdings

- Credit - 10%
- Debit - 10%

Till 30th April
On Selected Products



Dinapala Group

- Credit - Up to 25%
- Debit - Up to 25%

Till 30th April
On Selected Items



Nisaco Mall

- Credit - 20%
- Debit - 20%

Till 30th April
On Selected Items



Laksela Trade Centre

- Credit - Up to 60%
- Debit - Up to 60%

Till 30th April
On Selected Products



Laksela Lifestyle

- Credit - Up to 60%
- Debit - Up to 60%

Till 30th April
On Selected Products



Ranga Shopping Centre

- Credit - Up to 05%
- Debit - Up to 05%

Till 30th April
Min. Bill Val. Rs. 25,000/-,
On Selected Products



MiniSo

- Credit - Up to 60%
- Debit - Up to 60%

Till 30th April
On Selected Products



Lalanka Water Management

- Credit - Up to 50%
- Debit - Up to 50%

25th March-12th April
On Selected Products



St. Anthony's Hardware

- Credit - 10%
- Debit - 10%

Till 30th April
On Selected Products



One8one

- Credit - Up to 15%
- Debit - Up to 15%

Till 30th April
On Selected Products



Browns

A Heritage of Trust
Browns Electronics

- Credit - Up to 50%
- Debit - Up to 50%

Till 30th April
On Selected Products



HARITHAWELI

PLASTER

Harithaweli

- Credit - 20%
- Debit - 20%

Till 30th April
Max. Dis. Rs. 5,000/-



Hants

- Credit - Up to 30%
- Debit - Up to 30%

01st - 30th April
On Selected Products

BOC CARDS

Unstoppable Discounts

Enjoy seasonal shopping with a wave of discounts



JEWELLERY

UP TO

50%

Jewellery ගන්න හැඩවැඩ වෙන්න

Credit / Debit Card වලට හිතට Fit වෙන Discount රැල්ල

M MALLIKA HEMACHANDRA JEWELLERS

Mallika Hemachandra Jewellers

- Credit - Up to 40%
- Debit - Up to 40%

15th March - 20th April

On Selected Items

Chamathka
NEVER TO FORGET

Chamathka Jewellery

- Credit - 20%
- Debit - 20%

Till 30th April

On Selected Items

Raja Jewellers
Members of The Gold World

Raja Jewellers

- Credit - Up to 35%
- Debit - Up to 35%

20th - 23rd March & 04th, 11th, 19th, 21st April

On Diamond & Colorstone Jewellery

WNI Wellawatta Nithyakalyani Jewellery

Nithyakalyani Jewellers

- Credit - 20%
- Debit - 20%

01st - 30th April

On Diamond & Precious Stone Jewellery

PREMADASA & Co
JEWELLERS

Premadasa Jewellers

- Credit - 50%
- Debit - 50%

15th March - 30th April

On All Items

tiesh

Tiesh

- Credit - Up to 50%
- Debit - Up to 50%

01st - 07th April

On Selected Items

To apply for a new credit card, type "APPLY" and send an SMS to 076 700 2400.



Raddella

- Credit - Up to 35%
- Debit - Up to 35%

03rd - 05th April

On Selected Items



Muthukaruppan Chettiar

- Credit - Up to 50%
- Debit - Up to 50%

15th March - 30th April

On Selected Items



Fior Drissage Jewellers

- Credit - 50%
- Debit - 50%

Till 30th April

Any Diamond Jewellery on Display



Vogue Jewellers

- Credit - 45%
- Debit - 45%

01st - 30th April

On Diamonds & Precious Stones
(Colpetty, Negombo, Nugegoda,
Kandy, Kiribathgoda, Kurunegala)

BOC CARDS

Unstoppable Discounts

Enjoy seasonal shopping with a wave of discounts



SUPER MARKETS UP TO

30%

Super Market ගිණිත් ට්‍රොලියම fill කරගන්න
Credit / Debit Card චලව හිතව Fit වෙත Discount රැල්ල



Every Saturday from 16th to 30th March
& 06th to 27th April

● Credit - 30% on Fresh Vegetables,
Fruits, Seafood & Meat

Min. Bill Val. Rs. 4,000/-,

Max Dis. Rs. 2,000/-, Max. qty of 3 kg / 3 units per bill

Conditions Apply

To apply for a new credit card, type "APPLY" and send an SMS to 076 700 2400.



Every Wednesday & Sunday from 17th to 27th March & 14th to 28th April

- **Credit - 25% on Fresh Vegetables, Fruits & Seafood**
 - **Debit - 10% on Fresh Vegetables, Fruits & Seafood**
- Min. Bill Val. Rs. 4,000/-, Max Dis. Rs. 1,000/-,
Max. qty of 5 kg / 5 units per bill,
One transaction per card/per day



Every Saturday from 16th to 30th March

- **Credit - 25% off on "Keells Own Branded Products"**
- Min. Bill Val. Rs. 4,000/-, Max Dis. Rs. 1,000/-,
Max. qty of 3 kg / 3 units per bill

Every Sunday from 07th to 28th April

- **Credit - 25% on Fresh Vegetables, Fruits, Seafood & Meat**
- Min. Bill Val. Rs. 4,000/-, Max Dis. Rs. 1,000/-,
Max. qty of 3 kg / 3 units per bill, One transaction per card/per day



Every Sunday from 17th to 31st March & 07th to 28th April

- **Credit - 25% on Fresh Vegetables, Fruits, Seafood & Meat**
 - **Debit - 10% on Fresh Vegetables, Fruits, Seafood & Meat**
- Min. Bill Val. Rs. 3,500/-, Max Dis. Rs. 2,000/-,
Max. qty of 3 kg / 3 units per bill,
One transaction per card/per day



Every Friday from 22nd to 29th March & 05th to 26th April

- **Credit - 10% on Total Bill**
- Min. Bill Val. Rs. 5,000/-,
Max Dis. Rs. 1,500/-,
Max. qty of 3 kg / 3 units per bill

BOC CARDS

Unstoppable Discounts

Enjoy seasonal shopping with a wave of discounts



AUTO CARE UP TO **40%**

Auto Care එක්ක වාහනයට හොඳම Care එක
Credit / Debit Card වලට හිතට Fit වෙන Discount රැල්ල

 **TOYOTA LANKA**

Toyota Lanka

- Credit - Up to 40%
- Debit - Up to 40%

Till 30th April

On Selected Products and Services

AUTO MIRAJ 1
GRAND

Auto Miraj

- Credit - Up to 25%
- Debit - Up to 25%

Till 31st May

On Selected Products and Services

 **David Peiris Motor Company (Private) Limited**

David Peiris Motors

- Credit - Up to 30%
- Debit - Up to 30%

Till 30th April

On Selected Products and Services

KleenPark

The Details in Detail

KleenPark

- Credit - Up to 20%
- Debit - Up to 20%

Till 30th April

On Selected Products and Services

PIT & DRIVE
Trusted Service at its Best

A SUBSIDIARY OF TOYOTA LANKA

Pit & Drive

- Credit - Up to 20%

Till 30th April

On Selected Products and Services

CWORKS
CERTIFIED PARTS
BY TOYOTA TSUSHO

C Works

- Credit - Up to 20%
- Debit - Up to 15%

Till 30th April

On Selected Products and Services

To apply for a new credit card, type "APPLY" and send an SMS to **076 700 2400**.

BOC CARDS

Unstoppable Discounts

Enjoy seasonal shopping with a wave of discounts



EDUCATION UP TO

50%

දැනුම සොයන ඔබට

Credit / Debit Card වලට හිතට Fit වෙන Discount රැල්ල



Samudra Book Shop

- Credit - 20%
- Debit - 10%

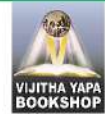
01st - 12th April
Max. Discount - Rs.5,000/-



sarasavi
bookshop (pvt) ltd

- Credit - 20%
- Debit - 10%

30th & 31st March
Max. Discount - Rs.5,000/-



Vijitha Yapa Book Shop

- Credit - 10%
- Debit - 10%

15th March - 20th April



Jeya Book Centre

- Credit - 10%
- Debit - 10%

01st - 30th April
Only on Fiction Books



Jeya Book Centre

- Credit - 10%
- Debit - 10%

01st - 30th April
Only on Fiction Books

ProMate™

world stationer

www.promateworld.com

- Credit - 30%
- Debit - 25%

01st - 30th April
Max. Discount - Rs.10,000/-

To apply for a new credit card, type "APPLY" and send an SMS to 076 700 2400.

Conditions Apply



www.atlas.lk

- Credit - 25%
- Debit - 20%

15th March - 30th April

Max. Discount - Rs.20,000/-

Aod-

Create, design, innovate.

Academy of Design

- Credit - 50%
- Debit - 50%

Till 30th April

On Enrollment Fee



Manesa Book Shop

- Credit - 15%
- Debit - 10%

10th - 20th April

Max. Discount - Rs.5,000/-
Min. Bill Val. Rs. 1,000/-



BOCCARDS

Unstoppable Discounts



Enjoy seasonal shopping with a wave of discounts



**YOUR ANY TRANSACTION
ABOVE RS.25,000
CAN BE CONVERTED TO
EASY SETTLEMENT PLAN**

EASY SETTLEMENT RATES

3 MONTHS	4.0%
6 MONTHS	6.5%
9 MONTHS	8.0%
12 MONTHS	10.0%
18 MONTHS	15.0%
24 MONTHS	18.0%

Application can be downloaded from www.boc.lk
The application should be sent to paymentplans@bob.lk



BOCCARDS

Unstoppable Discounts



Enjoy seasonal shopping with a wave of discounts



For all BOC Credit & Debit (ATM) Cards

up to 80% OFF

@ 4000+ partner outlets islandwide during this festive season

BOCCARDS
UNSTOPPABLE YOU

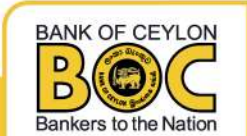
To apply for a new credit card, type **"APPLY"** and send an SMS to **076 700 2400**.

Conditions apply



A (Ika) Fitch Rating, AAA Brand Finance Rating.
Bank of Ceylon is a Licensed Commercial Bank supervised by the Central Bank of Sri Lanka.

Head Office, BOC Square,
No.1, Bank of Ceylon Mawatha, Colombo 1.



Conditions Apply