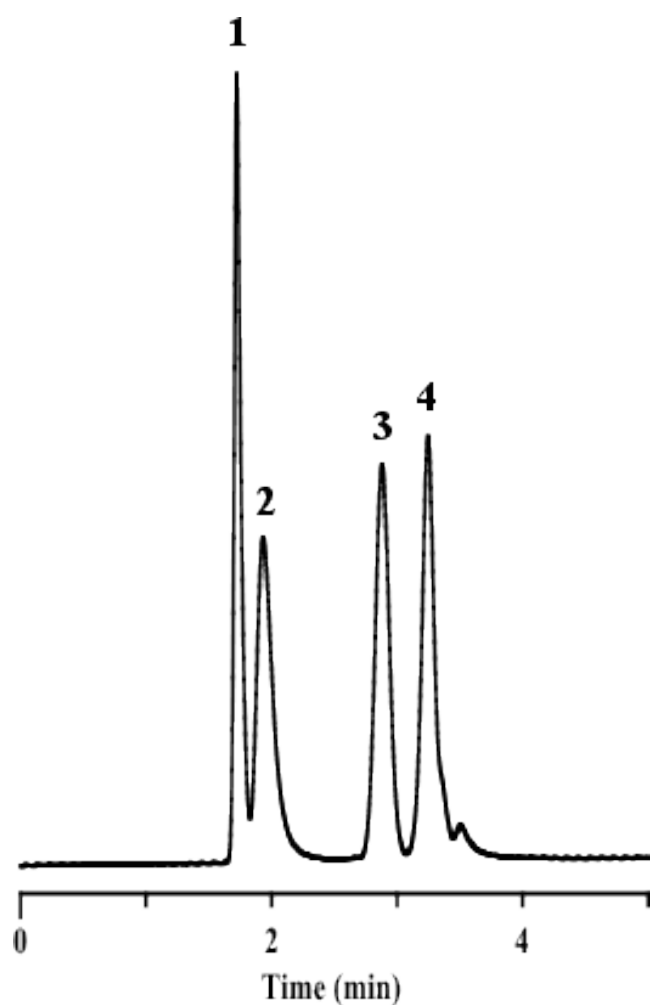


## Analysis of Polystyrene Standard

Data No. LA457-0000



Column	: Inertsil WP300 SIL	Solutes	: 1. Polystyrene (0.2 mg/mL, Mp 1,020,000)
	5 $\mu$ m		2. Polystyrene (0.2 mg/mL, Mp 115,000)
	250 x 4.6 mm I.D.		3. Polystyrene (0.2 mg/mL, Mp 9,200)
Column Cat. No.	: 5020-06046		4. Polystyrene (0.2 mg/mL, Mp 950)
Eluent	: THF		
Flow rate	: 1.0 mL/min.		
Col. Temp.	: Ambient		
Detection	: UV 254 nm		
Injection Vol.	: 5 $\mu$ L		
Sample	:		