



Fun-filled water playground with water-squirting frogs and a giant spider!



Image courtesy City of Bayswater. Credit: Luke Riley



Revitalising a popular riverside recreation park and water playground

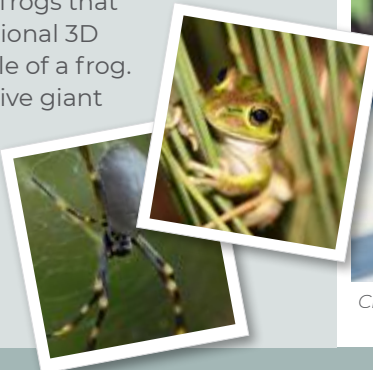
Maylands Waterland is a much-loved water play park on the Maylands Peninsula overlooking Derbarl Yerrigan (the Swan River) in Perth, Western Australia. Originally built in the 1970s, Waterland was redeveloped in 2022 to provide a new family-friendly aquatic playground with new facilities, fresh landscaping and animal sculptures by Natureworks.

The upgraded attraction includes a wading pool, splash pad, water play sculptures, a waterfall, seasonal landscaping and improved visitor facilities. Jointly funded by the City of Bayswater and the Australian Federal Government, the project demonstrates how a leisure facility designed in harmony with the environment will provide a valuable asset that benefits the local community and ecosystem.

Inspired by local flora and fauna

For the water splash play area, Natureworks provided animal play sculptures based on local fauna. These include ten larger-than-life frogs that squirt water, and an educational 3D model depicting the lifecycle of a frog. We also created an impressive giant golden orb spider for the dry playground area.

Wildlife found by the Swan River inspired the water park sculptures



Maylands Waterland splash pad



Enjoying the frog squirters (Image: Danella Bevis/The West Australian)



Children play with a frog (Image: Luke Riley)

"The design of the redeveloped Maylands Waterland is inspired by the Swan River, local native species and fauna. This theme is incorporated within the facility through custom made play elements, artworks and sculptures."

City of Bayswater



Waterland concept sketch by Josh Byrne & Associates



Social media promotion for Waterland, showing a Natureworks' frog

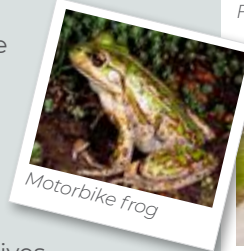


Fun frog squirter

Ten cute green amphibians mounted around the perimeter of the splash pad squirt water on delighted young visitors. Each frog sits on a rock base plate with pipework underneath connected to the water system.

Realistic frog replicas

Our frog squirter sculptures are based on the Motorbike Frog (*Litoria moorei*), which is commonly encountered around waterways, ponds and suburban gardens in the south-west of WA. Its unusual name is due to the male's mating calls sounding like a motorbike changing gears.



Motorbike frog

The frog is also referred to as the Western Green and Golden Bell Frog, Moore's Frog and the Western Green Tree Frog (although it mostly lives on the ground, rather than in trees). These frogs can grow up to around 10cm, but our sculptures are around three times that size for extra impact!

Each frog is unique

Because the frog's colour varies considerably in nature due to individual traits and changing weather conditions, each of our ten frogs is individually hand-painted with a unique set of colours and patterns.



Natureworks Green and Golden Bell Frog sculpture



Frogs squirting water



Frog squirter is positioned around the pool's perimeter

"The little frogs squirt water towards the centre of the pool and there are showers sneakily spraying you horizontally. The most diabolical thing is that these sprays alternate with each other, so you're never quite sure where you're going to get hit next!"

Nadia Haniff, Perth Happenings



These frogs are ready to squirt water on passers by!



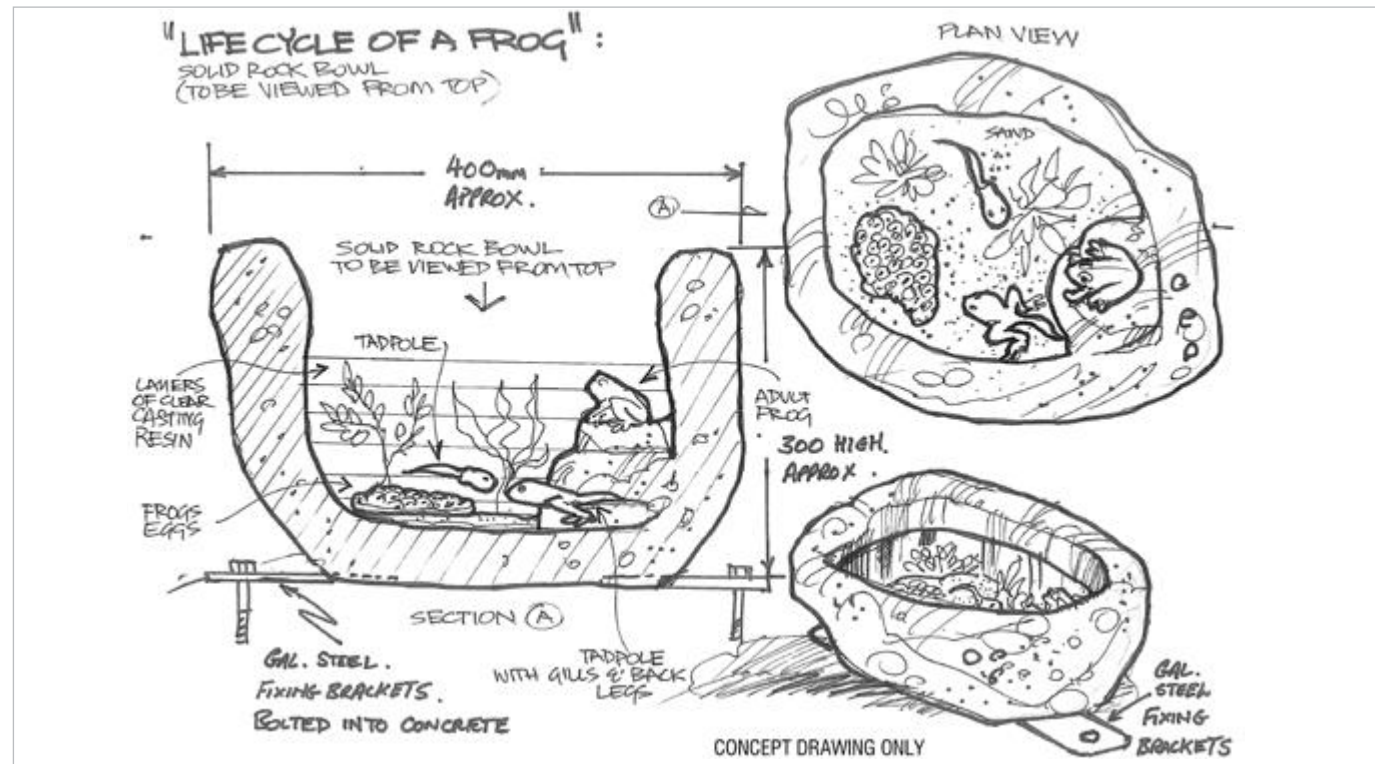
Frog sculptures in production at Natureworks



Making the frogs

The images on this page show the frog sculptures in various stages of production at Natureworks, from creating the mould through to painting, finishing and installing water fixtures.





Natureworks' concept sketch for rock bowl feature showing lifecycle of a frog

Educational feature – lifecycle of a frog

Another feature of Maylands Waterland is our life-sized 3D fibreglass model showing a frog's life stages from egg to tadpole to adult frog. Designed to be installed at ground level and viewed from above, the simulated environment shows a self-contained world within a rock pool.

This educational feature shows frog and tadpole replicas at different stages of metamorphosis, together with artificial vegetation and pebbles. Clear resin at the top represents the water in the pond and provides a clear view of the scene inside.

From egg to tadpole to frog

As shown in the simulated scene, the frog's lifecycle starts when a female frog lays eggs on vegetation in ponds and other permanent water sources.

These hatch into tadpoles, which can grow to 8cm long (or larger, if in deep, cool pools) before metamorphosing into frogs.

Encouraging kids to care and learn about frogs is important for future (and current) generations, because frogs are very good indicators of the health of local ecosystems.

"If you see or hear frogs (Kyooya) in an urban area, it means the local environment is doing well."

Rewild Perth



Rock bowl in production



Rock bowl ready to install



Close-up of the aquatic scene



A giant golden orb-weaving spider

Adding a touch of drama in the play area at Maylands Waterland is Natureworks' giant replica of a golden orb-weaving spider in its web. The golden orb-weaving spider (*Nephila edulis*) weaves large webs that shine like gold in the sunlight. Found all over Australia, it is harmless to humans.

The larger-than-life spider sculpture is over a metre long, mounted overhead onto steel cables representing the spider's web. This web is cleverly designed so the giant spider appears to have woven its web between the shade structures.

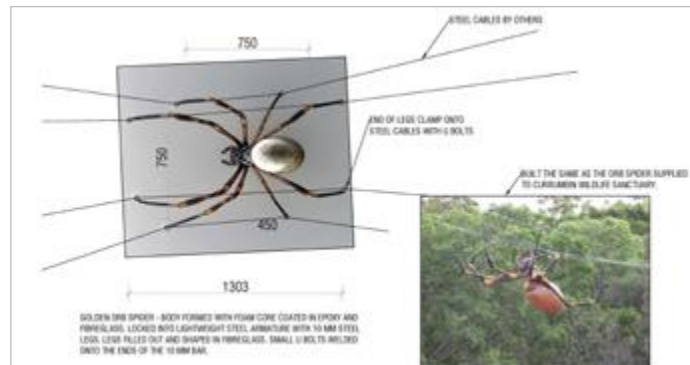
Our spider replica is made of fibreglass formed over a foam core strengthened with a lightweight steel armature. It is realistically painted with the spider's distinctive markings and coated with epoxy resin for weather protection. Bolts at the end of each of the spider's eight legs secure the spider to its steel 'web'.



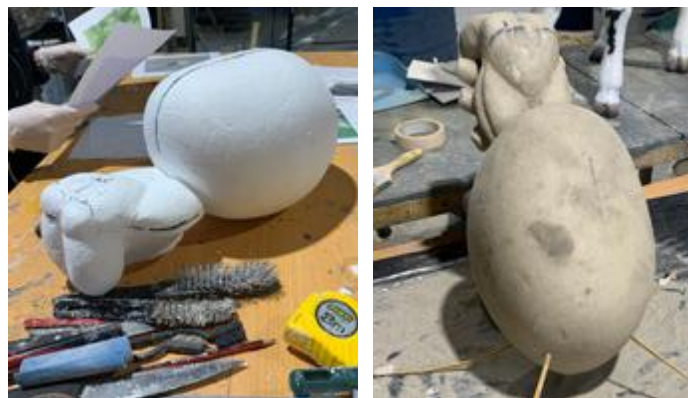
The spider hangs above the playground near the pool at Waterland



It's big, but harmless!



The golden orb-weaving spider in its 'web' at Waterland



The images above show the spider in various stages of design and production at Natureworks





A fun water playground inspired by nature

The sculptures Natureworks provided for the revitalised aquatic park beside the Swan River contributed to the landscape architect's vision for the space as an interface between land and river.

By reflecting local flora and fauna in the design, the revitalised Maylands Waterland feels an integral part of the local landscape and is a much-loved leisure attraction for the community.

Reinvigorating aquatic play spaces

If you would like to bring an old water park back to life – or develop a new one – we hope you are inspired by this project! Natureworks can provide creative concepts and advice for projects, as well as custom sculptures and installation services.

Many of our animal sculptures and themed props can be adapted for water playgrounds and splash parks with the addition of water fittings, strong substructures and waterproof finishes.

For more inspiration, see [playground & water play projects](#) on our website, or give us a call!

“Maylands Waterland was inspired by Swan River ecology. Key elements of the design include interpretations of local native flora and fauna, many of which are depicted as custom play elements, feature fencing, artworks and sculptural pieces”

Josh Byrne & Associates



The original and the best!

Natureworks artists are the original creators of a huge range of museum-quality animal statues, nature play sculptures, big things, artificial trees, rocks and themed props.

Our craftsmanship blends biology, storytelling, and purpose. Each sculpture is custom-designed and fabricated in fibreglass, GFRC, polyurethane, stainless steel, aluminium, or bronze. We can also provide design concepts and installation services.

Contact Natureworks to find out more!