



SHRI MOTI MOHAN CONSTRUCTION



Established in the year 2022, “Shri Moti Mohan Construction” is a leading Trader, Wholesaler and Distributor of high-quality construction materials such as Crushed Stone, Construction Aggregates, Construction Sand and other building materials.

www.shrimotimohan.in

ABOUT US

Established in the year 2022, "Shri Moti Mohan Construction" is a leading Trader, Wholesaler and Distributor of high-quality construction materials such as Crushed Stone, Construction Aggregates, Construction Sand and other building materials. We are committed to providing reliable and durable materials that meet the diverse needs of modern construction projects. Our products are widely appreciated for their strength, quality, and consistency, making them suitable for various residential, commercial, and infrastructure developments.

Our professionals work in close coordination to assure a high-quality assortment of products to our customers. We have recruited a team of skilled and experienced professionals who help us maintain high standards in procurement, quality control, and customer service. Their dedication and expertise enable us to deliver products that meet industry requirements and customer expectations. In addition to this, to avoid disputes in the workplace and maintain smooth operations, our professionals strive with dedication and professionalism at every stage of the business process.

WHY CHOOSE US

PREMIUM MATERIALS

WE SUPPLY HIGH-
GRADE CRUSHED
STONE, SAND, AND
AGGREGATES THAT
MEET INDUSTRY
STANDARDS FOR
DURABILITY AND
PERFORMANCE.

TIMELY DELIVERY

OUR EFFICIENT
LOGISTICS
NETWORK
ENSURES ON-TIME
DELIVERY SO YOUR
CONSTRUCTION
WORK CONTINUES
WITHOUT DELAYS.

EXPERT TEAM

WE FOLLOW
TRANSPARENT
PRICING AND
ETHICAL DEALINGS
TO BUILD LONG-
TERM TRUST WITH
OUR CUSTOMERS.

FAIR BUSINESS PRACTICES

OUR COMMITMENT
TO QUALITY AND
RELIABILITY HAS
HELPED US BUILD
A STRONG AND
EXPANDING
NETWORK OF
SATISFIED CLIENTS.



CRUSHED STONE

OUR PRODUCTS



**200MM SOLID
CONSTRUCTION**



**18MM CHIPS
CONSTRUCTION**



**20MM SOLID
CONSTRUCTION**



**150MM SOLID
CONSTRUCTION**



**15MM SOLID
CONSTRUCTION**

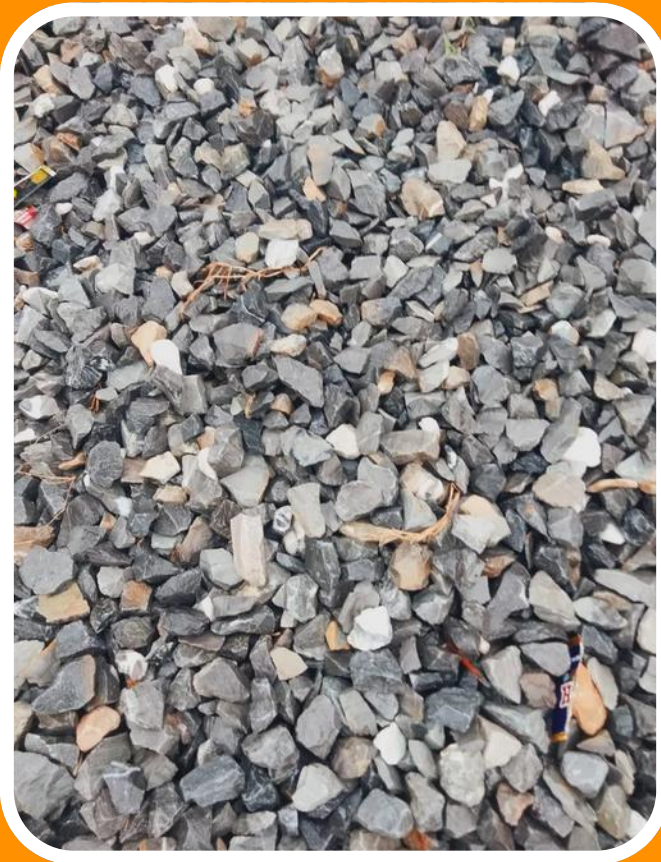


**10MM SOLID
CONSTRUCTION**

OUR PRODUCTS



**25MM SOLID
CONSTRUCTION**



**65MM SOLID
CONSTRUCTION**



**45MM SOLID
CONSTRUCTION**



**40MM SOLID
CONSTRUCTION**

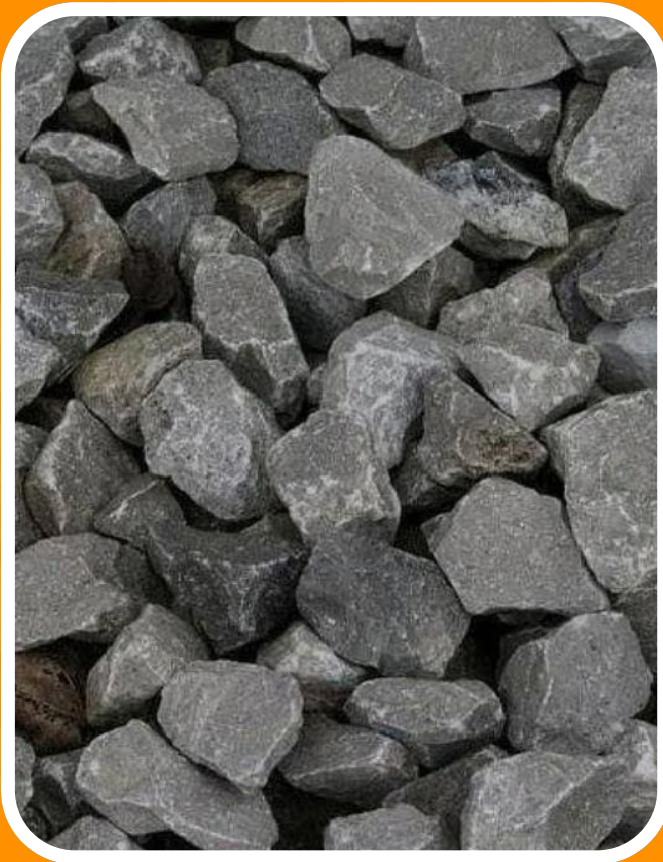


**50MM SOLID
CONSTRUCTION**



**6MM SOLID
CONSTRUCTION**

OUR PRODUCTS



**60MM SOLID
CONSTRUCTION**



**35MM SOLID
CONSTRUCTION**

STONEDUST

OUR PRODUCTS



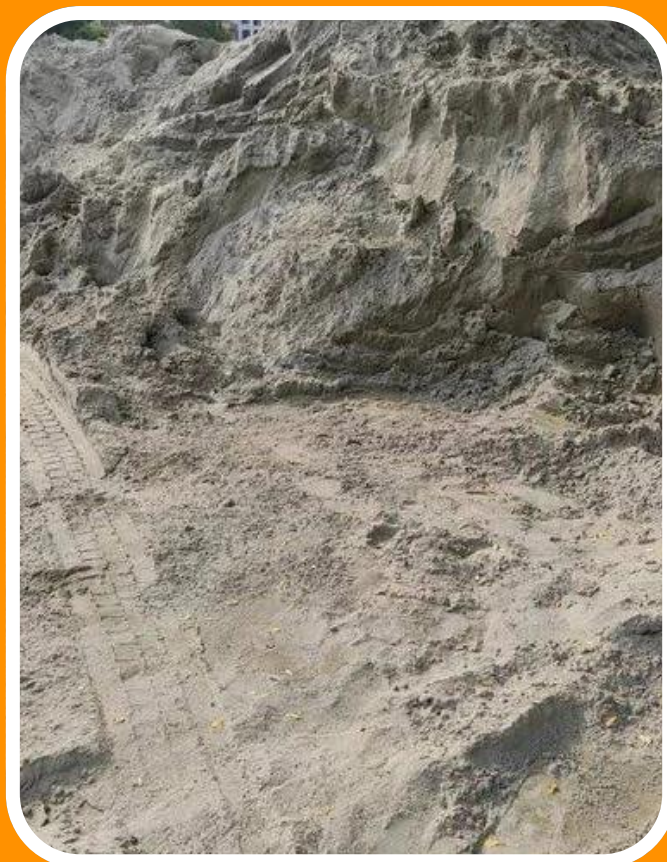
**90% GRAY
CRUSHED**



**81% GRAY
CRUSHED POWDER**



**95% GRAY
CRUSHED**



**80% GRAY
CRUSHED**



CONCRETE STONE CHIPS

OUR PRODUCTS



10MM CONSTRUCTION



CONSTRUCTION SAND

OUR PRODUCTS



**BROWN COARSE
CONSTRUCTION**



**YAMUNA RIVER
PEBBLY**



**BROWN COURSE
CONSTRUCTION**



**BROWN MEDIUM
CONSTRUCTION**



**BROWN BUILDING
CONSTRUCTION**



**YAMUNA RIVER
MEDIUM**

OUR PRODUCTS



YAMUNA RIVER COARSE CONSTRUCTION

www.shrimotimohan.in

The background of the image is a dense field of yellow, irregularly shaped construction aggregates, likely crushed stone or gravel, filling the entire frame.

CONSTRUCTION AGGREGATES

OUR PRODUCTS



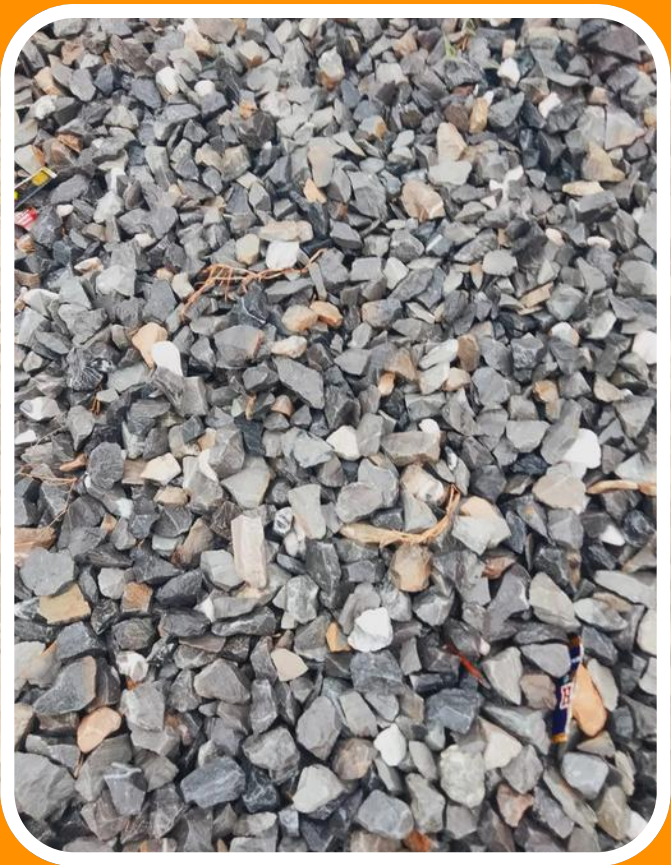
**6MM SOLID
CONSTRUCTION**



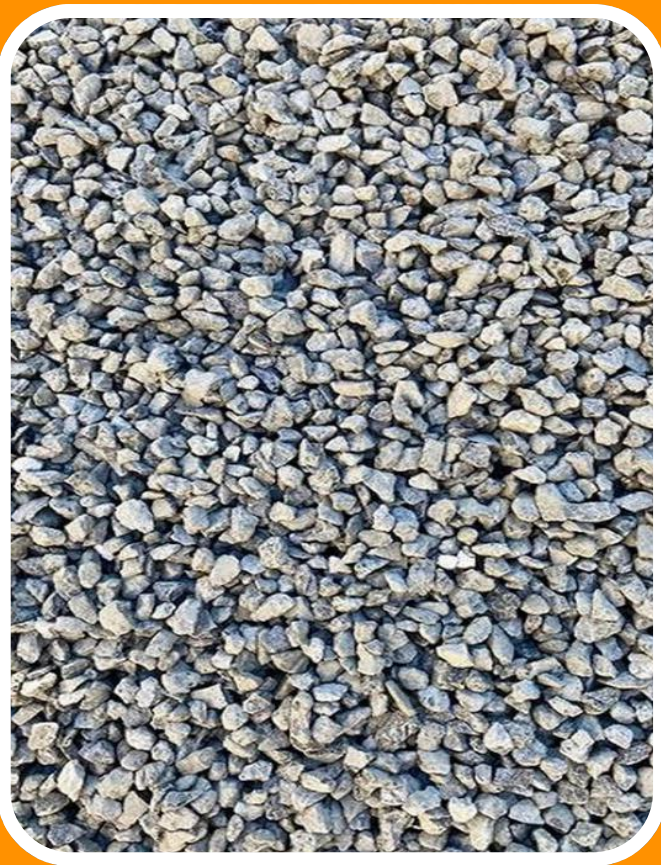
**30MM SOLID
CONSTRUCTION**



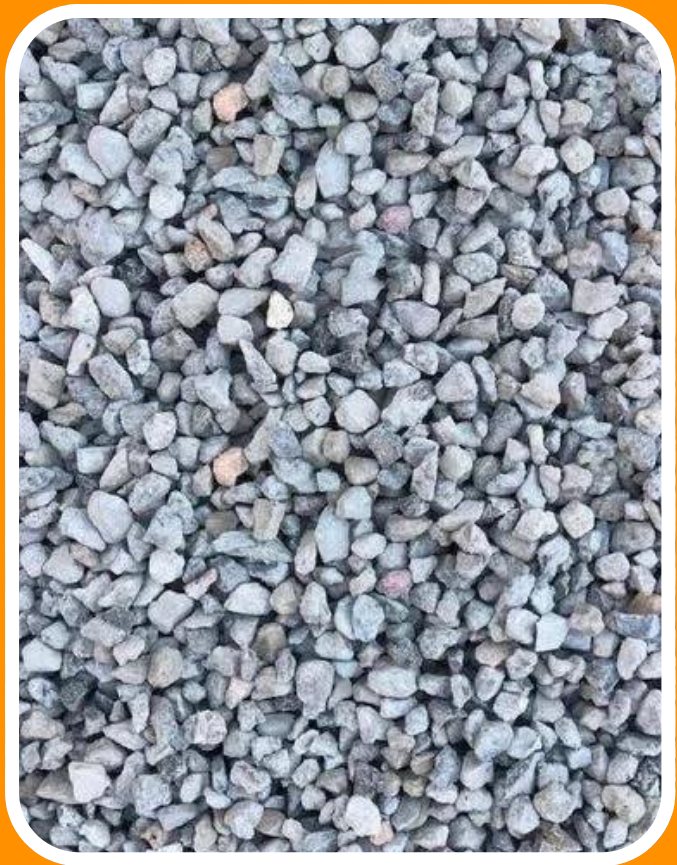
**25MM SOLID
CONSTRUCTION**



**20MM
CONSTRUCTION**



**10MM SOLID
CONSTRUCTION**



**20MM SOLID
CONSTRUCTION**

OUR PRODUCTS



**35MM SOLID
CONSTRUCTION**

www.shrimotimohan.in



STONE

OUR PRODUCTS



90MM CHIPS CONSTRUCTION

www.shrimotimohan.in



CONSTRUCTION RIVER SAND

OUR PRODUCTS



**RIVER SAND
CONSTRUCTION**



**RIVER SAND
CONSTRUCTION**

Contact Us



Kapil Pandey



+91-7526076666



kapil@shrimotimohangroup.com



**266, Kydganj, Allahabad, Prayagraj
- 211003, Uttar Pradesh, India**

Thank
you!

