

GROVES KNOWS GLASS



GROVES KNOWS STONE



**STRONGER.
SAFER.
SMARTER.**



SINCE 1980, Groves Incorporated has been a leading supplier of material handling products for the glass and stone industries. We design, engineer and manufacture our products to the highest standards and partner with companies both domestically and internationally who share our commitment to safety and quality.

We supply a wide variety of transport racks, shop carts, and bundle rack systems to help our customers solve their storage, fabrication, transportation and warehouse needs. After four decades of innovation in the glass and stone industries, we remain dedicated to bringing the strongest, safest and smartest products to you!



PRICING: Groves Incorporated offers competitive pricing across our product line. For current product pricing, please contact your local distributor or call us at 800-991-2120. Volume discounts may be available.

SHIPPING: Product ships from our Woodstock, IL location and whenever possible, product ships knocked down for lower freight costs. Unless otherwise noted at the time of purchase, a pallet fee will be added to all orders shipping via common carrier.

DAMAGED SHIPMENTS: It is your responsibility to thoroughly inspect the shipment for any damage prior to the shipment being signed for. In the event that your product is damaged while in transit, please contact us immediately at 800-991-2120.

CONTACT US: For general questions, customer service or pricing, please contact us at 800-991-2120 or sales@groves.com.

STORAGE

- 2 Heavy-Duty Bundle Rack
- 3 Heavy-Duty Bundle Rack Long
- 4 Multi-Purpose Glass Storage System
- 5 Backsplash Packages
Universal Storage System
- 6 Stacking Rack
Stacking Box
- 7 A-Frame Storage Systems
- 8 Windshield Racks
- 9 Tool Storage System

FABRICATION

- 10 Heavy-Duty Shop Carts
Heavy-Duty Backsplash Cart
- 11 Harp Rack
Mini Harp Rack
- 12 Glass Carts
- 13 Single Sided Shop Carts
- 14 Six Wheeled Fabrication Carts
Aluminum Install Cart
Heavy-Duty Drywall Cart
- 15 Stone Dollies
Glass Dollies
Miter-Up
- 16 Fabrication Stand
Cut-Out Stand
Tilt Table Cart
- 17 Heavy-Duty Fabrication Tables
Glass Cutting Table

TRANSPORTATION

- 18 Transport Racks
Fabricator Transport Rack
- 19 Heavy-Duty Transport Rack
- 20 Economy Transport Carts
- 21 Single Sided Truck Racks
Truck Mounted A-Frame

WAREHOUSE

- 22 Forklift Boom
Spreader Beams
- 23 Stone Slings
Glass Slings
- 24 Glass Shoes



FEATURES

- ▶ Store bundles or slabs up to 9,000 lbs. between two posts (4,500 lb. capacity per post)
- ▶ Outside rails are designed with slots to hold 2 × 4's, which protect the slab edges and finish on the rails (wood not included)
- ▶ Outside rails have 2" square holes spaced 4" apart on the top. A steel plate with identical holes is welded and boxed inside the rails, 1" up from the bottom
- ▶ Heavy-duty powder coated rails are 60" long × 11" wide × 5 ½" high and butt together for desired length
- ▶ Rails ship with 11" connector tubes for butting rails together in a straight line
- ▶ 2" square tube posts with a heavy-duty powder coated finish
- ▶ 2" square rubber post caps are included to prevent scratches

PART NUMBER	DESCRIPTION	WEIGHT
BR-5	Heavy-duty outside rail with wood slot	55 lbs.
SP-40	40" post for storing smaller fabricated parts and cut-offs	10 lbs.
SP-60	60" post for storing standard sized slabs	15 lbs.
SP-80	80" post for storing taller oversized slabs	19 lbs.
PC-2	Scratch resistant rubber post caps, 2" × 2"	4 oz.

SUGGESTED PACKAGES FOR BUNDLES OR SLABS USING 60" POSTS

PART NUMBER	LENGTH	OPENINGS	PARTS	WEIGHT
4-W60	5'	4	(2) BR-5, (10) SP-60	260 lbs.
9-W60	10'	9	(4) BR-5, (20) SP-60	520 lbs.
19-W60	20'	19	(8) BR-5, (40) SP-60	1,040 lbs.
49-W60	50'	49	(20) BR-5, (100) SP-60	2,600 lbs.

SAFETY WARNINGS

- + Use ½" holes located on the bottom flange for securing rails to the floor
- + Maximum weight allowed per bundle is 9,000 lbs. (4,500 lbs. per post)
- + When assembled the overall usable height of the post is 5 ½" less than listed



HEAVY-DUTY BUNDLE RACK LONG

STONE

STORAGE



FEATURES

- ▶ Designed to store jumbo size stone up to 9,000 lbs. between two posts (4,500 lb. capacity per post)
- ▶ Outside rails are designed with slots to hold 2 × 4's, which protect the slab edges and finish on the rails (wood not included)
- ▶ Outside rails have 2 ½" square holes spaced 5" apart on the top. A steel plate with identical holes is welded and boxed inside the rails, 1" up from the bottom
- ▶ Heavy-duty powder coated rails are 90" long × 11" wide × 5 ½" high and butt together for desired length
- ▶ Rails ship with 11" connector tubes for butting rails together in a straight line
- ▶ 2 ½" square tube posts with a heavy-duty powder coated finish
- ▶ 2 ½" square rubber post caps are included to prevent scratches

PART NUMBER	DESCRIPTION	WEIGHT
HDBR 2.5-90	Heavy-duty outside rail with wood slot	107 lbs.
SP-72	Heavy-duty 2 ½" × 2 ½" × ⅜" wall thickness, 72" post height	29 lbs.
PC-2.5	Scratch resistant rubber post caps, 2 ½" × 2 ½"	8 oz.

SUGGESTED PACKAGES

PART NUMBER	LENGTH	OPENINGS	PARTS	WEIGHT
5-H7290	7 ½'	5	(2) BR2.5-90, (12) SP-72	558 lbs.
11-H7290	15'	11	(4) BR2.5-90, (24) SP-72	1,116 lbs.
23-H7290	30'	23	(8) BR2.5-90, (48) SP-72	2,232 lbs.
35-H7290	45'	35	(12) BR2.5-90, (72) SP-72	3,348 lbs.
47-H7290	60'	47	(16) BR2.5-90, (96) SP-72	4,464 lbs.
59-H7290	75'	59	(20) BR2.5-90, (120) SP-72	5,580 lbs.

SAFETY WARNINGS

- + Use ½" holes located on the bottom flange for securing rails to the floor
- + Maximum weight allowed per bundle is 9,000 lbs. (4,500 lbs. per post)
- + When assembled the overall usable height of the post is 5 ½" less than listed



MULTI-PURPOSE GLASS STORAGE SYSTEM

GLASS

FEATURES

- ▶ A space-saving way to store flat glass products in wood case or stoce pack formats
- ▶ Outside rails have 2" square holes spaced 4" apart on the top. A steel plate with identical holes is welded and boxed inside the rails, 1" up from the bottom
- ▶ Heavy-duty powder coated rails are 60" long × 11" wide × 5 ½" high and butt together for desired length
- ▶ Rails ship with 11" connector tubes for butting rails together in a straight line
- ▶ 2" square tube posts with a heavy-duty powder coated finish
- ▶ Optional Easy Slide, a low friction material, can be mounted to the rails and posts for ease of sliding products in and out
- ▶ For stoce packs, use center rail with Easy Slide to support the glass when sliding individual lites out of the racks
- ▶ 2" rubber post caps are included with the wood case kits

PART NUMBER	DESCRIPTION	WEIGHT
BR-5	Outside rail	55 lbs.
BR-5ES	Outside rail with Easy Slide	60 lbs.
CR-5ES	Center rail with Easy Slide	30 lbs.
SP-60	Post 60" long	15 lbs.
SP-80	Post 80" long	19 lbs.
SP-102	Post 102" long	26 lbs.
SP-60ES	Post 60" long with Easy Slide	16 lbs.
SP-80ES	Post 80" long with Easy Slide	20 lbs.
SP-102ES	Post 102" long with Easy Slide	28 lbs.

SUGGESTED WOOD CASE KITS

PART NUMBER	LENGTH	OPENINGS	PARTS	WEIGHT
4pak	5'	4	(2) BR-5, (6) SP-60, (4) SP-80	276 lbs.
9pak	10'	9	(4) BR-5, (10) SP-60, (10) SP-80	560 lbs.
19pak	20'	19	(8) BR-5, (16) SP-60, (16) SP-80, (8) SP-102	1,192 lbs.
49pak	50'	49	(20) BR-5, (24) SP-60, (36) SP-80, (40) SP-102	3,184 lbs.

SUGGESTED EASY SLIDE CASE KITS

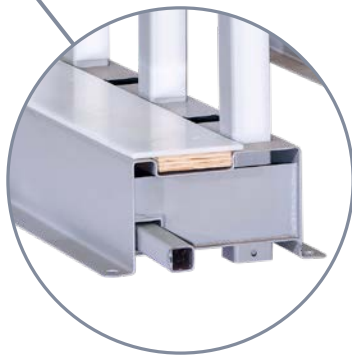
PART NUMBER	LENGTH	OPENINGS	PARTS	WEIGHT
4pakES	5'	4	(2) BR-5ES, (1) CR-5ES, (6) SP-60ES, (4) SP-80ES	326 lbs.
9pakES	10'	9	(4) BR-5ES, (2) CR-5ES, (10) SP-60ES, (10) SP-80ES	660 lbs.
19pakES	20'	19	(8) BR-5ES, (4) CR-5ES, (16) SP-60ES, (16) SP-80ES, (8) SP-102ES	1,400 lbs.
49pakES	50'	49	(20) BR-5ES, (10) CR-5ES, (24) SP-60ES, (36) SP-80ES, (40) SP-102ES	4,125 lbs.

SAFETY WARNINGS

- + Use ½" holes located on the bottom flange for securing rails to the floor
- + Maximum weight allowed per space is 9,000 lbs. between two posts (4,500 lbs. per post)
- + When assembled, the overall usable height of the post is 5 ½" less than listed



4pakES



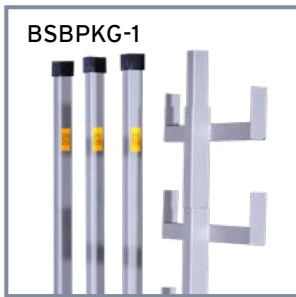
4pak

BACKSPLASH PACKAGES

STONE



BSBPKG-2



BSBPKG-1

FEATURES

- ▶ Designed to store large quantities of backsplash in a small area, or a combination of slabs and backsplash on one rack
- ▶ Heavy-duty powder coated rails are 60" long x 11" wide x 5 1/2" high and butt together for desired length
- ▶ Rails ship with 11" connector tubes for butting rails together in a straight line
- ▶ Outside rails have 2" square holes spaced 4" apart on the top. A steel plate with identical holes is welded and boxed inside the rails, 1" up from the bottom
- ▶ For BSBPKG-1, outside rails are designed with slots to hold 2 x 4's, which protect the slab edges and finish on the rails (wood not included) Each 5' section has two openings for slab storage plus four tiered double sided uprights for eight sections of backsplash storage
- ▶ For BSBPKG-2, each 5' section consists of (2) four tiered double sided uprights for a total of sixteen sections of backsplash storage

SUGGESTED PACKAGES

PART NUMBER	LENGTH	PARTS	WEIGHT
BSBPKG-1	5'	(2) BR-5, (8) SP-60, (8) BSB23, (6) PC-2	350 lbs.
BSBPKG-2	5'	(2) BR-5, (4) SP-60, (16) BSB23	410 lbs.
BSB23		Backsplash bracket	15 lbs.

SAFETY WARNINGS

- + Use 1/2" holes located on the bottom flange for securing rails to the floor
- + Maximum weight capacity for slab storage is 9,000 lbs. between two posts (4,500 lbs. per post)
- + Maximum weight capacity for backsplash storage is 500 lbs. per section evenly distributed
- + When assembled, the overall usable height of the post is 5 1/2" less than listed

UNIVERSAL STORAGE SYSTEM

GLASS STONE



FEATURES

- ▶ Easily store remnants, finished countertops, doors, windows or screens in an organized manner
- ▶ Outside rails are constructed of extruded aluminum to provide a strong but lightweight storage solution
- ▶ Outside rails are designed with slots to hold 2 x 4's (wood not included)
- ▶ Outside rails are 60" long x 6" wide x 3" high and have 1" diameter round holes spaced every 3" apart. A secondary plate with identical holes is welded below the top rail, 1" up from the bottom
- ▶ Posts are 1" diameter steel coated with a galvanized finish
- ▶ Posts can be removed for easy loading and unloading of product

SUGGESTED PACKAGES

PART NUMBER	LENGTH	OPENINGS	PARTS	WEIGHT
USS-5	60"	14	(2) USS-5 rail, (30) USS-5 post	106 lbs.

SAFETY WARNINGS

- + Maximum weight per opening is 500 lbs. (250 lbs. per post) when using 2 x 4 wood in slots
- + Maximum material height is 48"

STACKING RACK

STONE



FEATURES

- ▶ Heavy-duty powder coated rack designed to store remnants, cutoffs, strips and cut to size pieces
- ▶ Can be stacked three high with a stationary bottom
- ▶ Single rack can be used as a jobsite cart for safe transport and handling of material and will roll through a 30" door opening
- ▶ Optional caster kit includes (4) 5" diameter casters (two rigid and two swivel brake)
- ▶ Removable front legs for easy hand loading and unloading
- ▶ Hold down bars included to secure the material to the rack and prevent damage in transport
- ▶ Riveted rubber included on base and uprights to protect material

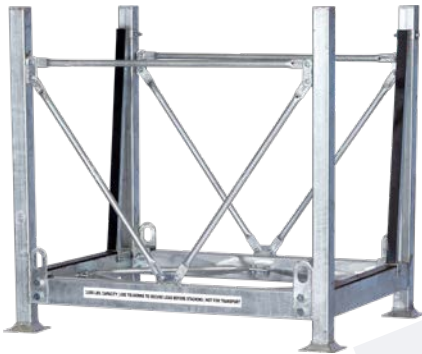
PART NUMBER	DIMENSIONS (l × d × h)	WEIGHT
SR-1	55" × 27" × 41"	200 lbs.
SRCK-5	Optional caster kit	35 lbs.

SAFETY WARNINGS

- + Maximum capacity is 3,000 lbs. total. One rack can hold 3,000 lbs. but if stacked three high, each rack has a maximum weight capacity of 1,000 lbs.
- + Casters cannot be used when racks are stacked

STACKING BOX

STONE



FEATURES

- ▶ Store remnants up to 29" high and 10' long
- ▶ Stackable up to 3 units for space savings
- ▶ Fork-liftable for stacking or move with ease with a pallet jack
- ▶ Rubber is mounted on base and uprights to protect material
- ▶ Durable hot dip galvanized finish

PART NUMBER	DIMENSIONS (l × d × h)	WEIGHT
STKB	39½" × 31" × 36"	130 lbs.

SAFETY WARNINGS

- + Up to 3,000 lbs. total weight capacity per box
- + 1,000 lbs. Weight capacity per box when stacked three high
- + Only move one box at a time. Do not move boxes when stacked



SINGLE SIDED A-FRAME

GLASS STONE



FEATURES

- ▶ Powder coated heavy-duty steel A-frame rack
- ▶ Bottom U-channel is 3 3/4" wide with a 1" side ledge
- ▶ Requires (2) 2 x 4's at 20" long to fit in U-channel to support the load (wood not included)

PART NUMBER	DIMENSIONS (l x w x h)	LEDGE	WEIGHT
SSECOA	60" x 40" x 58"	20"	110 lbs.

SAFETY WARNINGS

- + 12,000 lbs. total weight capacity
- + NOT FOR TRANSPORT

ECONO A-FRAME

GLASS STONE



FEATURES

- ▶ Powder coated heavy-duty steel A-frame rack
- ▶ Bottom U-channel is 3 3/4" wide with 1" side ledges
- ▶ Requires (4) 2 x 4's at 20" long to fit in U-channel to support the load (wood not included)
- ▶ 6" spread on top of A-frame

PART NUMBER	DIMENSIONS (l x w x h)	LEDGE	WEIGHT
ECOA	63 1/2" x 60" x 58"	20"	143 lbs.

SAFETY WARNINGS

- + 24,000 lbs. total weight capacity (12,000 lbs. per side)
- + NOT FOR TRANSPORT

FOLDABLE A-FRAME

GLASS STONE



FEATURES

- ▶ Powder coated foldable A-frame rack. Base arms fold up for ease of shipping and storage when frames are not in use
- ▶ Bottom U-channel is 3" wide with 1" side ledges; 2 1/2" wide inside dimensions
- ▶ Requires (4) 2 x 3's at 19" long to fit in U-channel to support the load (wood not included)
- ▶ 6" spread on top of A-frame

PART NUMBER	DIMENSIONS (l x w x h)	LEDGE	WEIGHT
FAF-60	60" x 60" x 58"	20 1/2"	76 lbs.

SAFETY WARNINGS

- + 24,000 lbs. total weight capacity (12,000 lbs. per side)
- + NOT FOR TRANSPORT



GWR-D90

FEATURES

- ▶ Designed to optimize storage space and simplify organization for lites
- ▶ Welded steel construction with powder coated finish
- ▶ Freestanding or space-saving wall mounted designs
- ▶ Efficiently store up to 90 lites
- ▶ Neoprene glass stops installed on uprights
- ▶ Steel pegs have durable, easy to clean polyethylene covers with plastic caps
- ▶ Easy assembly with no special tools required



Optional caster kit fits all freestanding windshield racks

PART NUMBER	DESCRIPTION	DIMENSIONS (l x d x h)	WEIGHT
GWR-S25	Freestanding single sided 25 lite	27" x 41" x 52"	149 lbs.
GWR-S36	Freestanding single sided 36 lite	27" x 41" x 72"	204 lbs.
GWR-S36LAR	Freestanding single sided 36 large lite	40" x 47" x 72"	225 lbs.
GWR-D90	Freestanding double sided 90 lite	72" x 27" x 94"	430 lbs.
GWR-W45	Wall-mounted 45 lite	27" x 26" x 104"	197 lbs.
MWCK-5	Optional caster kit includes (4) mobile windshield rack brackets, (4) 5" casters (two rigid and two swivel brake) and all hardware		30 lbs.



GWR-S25



GWR-S36



GWR-S36LAR



GWR-W45



FEATURES

- ▶ Store tools, accessories and other small items in one safe and secure location
- ▶ Manufactured with heavy-duty powder coated steel
- ▶ Available in wall mounted or mobile units
- ▶ Individual locker dimensions: 24" wide × 20" deep × 72" tall
- ▶ Each individual locker equipped with three adjustable shelves and a rear security panel
- ▶ Optional accessories include lockable door, top security shelf, metal peg board with mounting bar and louvered panel with mounting bar

PART NUMBER	DESCRIPTION	
TSS-WM-S	Wall-mounted tool storage system – starter unit	118 lbs.
TSS-WM-A	Wall-mounted tool storage system – add-on section	90 lbs.
TSS-M2	Mobile tool storage system – two sections wide	259 lbs.
TSS-M3	Mobile tool storage system – three sections wide	362 lbs.
TSS-SEC	Security option includes top security shelf and lockable door	41 lbs.
TSS-PB	Optional metal peg board with mounting bar	10 lbs.
TSS-LP	Optional metal louvered panel with mounting bar	10 lbs.
HBS-24GR	Additional shelf	6 lbs.



HEAVY-DUTY SHOP CARTS

GLASS | STONE



HDSC8472

FEATURES

- ▶ Effortlessly move product throughout the shop with our powder coated heavy-duty shop carts
- ▶ Riveted rubber included on the base and uprights to protect material
- ▶ Ratchet straps are used to secure the load
- ▶ Pull handle mounted on one end for maneuverability
- ▶ HDSC48 uses (4) 5" casters (two rigid and two swivel brake) rated at 1,000 lbs. each
- ▶ Both HDSC8448 and HDSC8472 units use (4) 8" casters (two rigid and two swivel brake) rated at 1,000 lbs. each

PART NUMBER	DIMENSIONS (l x w x h)	LOAD HEIGHT	WEIGHT
HDSC48	54" x 38" x 62"	48"	215 lbs.
HDSC8448	84" x 40" x 63"	48"	360 lbs.
HDSC8472	84" x 40" x 87"	72"	460 lbs.

SAFETY WARNINGS

- + 4,000 lbs. total weight capacity (2,000 lbs. per side)
- + Ratchet straps must be used at all times

HEAVY-DUTY BACKSPASH CART

STONE



FEATURES

- ▶ Efficiently move cut backslash around the shop
- ▶ Powder coated heavy-duty cart
- ▶ Pull handle mounted on one end for maneuverability
- ▶ Includes (4) 5" casters (two rigid and two swivel brake)
- ▶ Shelf dimensions are 77½" long x 10" deep

PART NUMBER	DIMENSIONS (l x w x h)	WEIGHT
HDBSC8472	84" x 41½" x 84"	570 lbs.

SAFETY WARNINGS

- + Maximum capacity is 3,200 lbs. when evenly distributed (300 lbs. max each for four upper suspended shelf levels, 1,000 lbs. max each for two bottom shelf levels)

HARP RACK

GLASS



FEATURES

- ▶ Easily store and transport individual pieces of glass throughout the shop
- ▶ High-density polyethylene used on the base for easy sliding of loose lites or insulated glass
- ▶ Includes (4) 5" swivel casters rated at 1,000 lbs. each and (2) adjustable foot locks mounted in front for stability
- ▶ 60 long and 60 short plastic covered rods are included to provide (39) openings at $\frac{7}{16}$ " and (19) openings at $1\frac{5}{16}$ "
- ▶ Heavy-duty powder coated finish

PART NUMBER	DIMENSIONS (l x d x h)	LOAD HEIGHT	OPENINGS	WEIGHT
HR-4860	82" x 48" x 68 1/2"	60"	Includes enough rods to have 39 openings at $\frac{7}{16}$ " wide and 19 at $1\frac{5}{16}$ " wide	525 lbs.

FABRICATION

MINI HARP RACK

GLASS



FEATURES

- ▶ A smaller version of the HR-4860 above using the same casters and high-density polyethylene
- ▶ Easily store and maneuver glass in small or confined work spaces
- ▶ 30 long and 30 short plastic covered rods are included to provide (19) openings at $\frac{7}{16}$ " and (10) openings at $1\frac{5}{16}$ "
- ▶ Heavy-duty powder coated finish

PART NUMBER	DIMENSIONS (l x d x h)	LOAD HEIGHT	OPENINGS	WEIGHT
HR-4860 Mini	44" x 48" x 68 1/2"	60"	Includes enough rods to have 19 openings at $\frac{7}{16}$ " wide and 10 at $1\frac{5}{16}$ " wide	300 lbs.



GLC-3248



GLC-4878

FEATURES

- ▶ Powder coated heavy-duty glass carts in four size options to efficiently move glass throughout the shop
- ▶ All carts have plywood bases and riveted rubber on the horizontal upright supports
- ▶ Models GLC-3248, GLC-3660 and GLC-3672 include (4) 8" casters (two rigid and two swivel brake) rated at 1,000 lbs. each
- ▶ Caster kit is optional on the GLC-4878 and includes (4) 8" casters (two rigid and two swivel brake) rated at 2,000 lbs. each
- ▶ GLC-3248 has a pull handle mounted on one end for maneuverability

PART NUMBER	DIMENSIONS (l × w × h)	LOAD HEIGHT	WEIGHT
GLC-3248	54" × 32" × 55"	48"	260 lbs.
GLC-3660	72" × 36" × 75"	60"	417 lbs.
GLC-3672	84" × 36" × 87"	72"	470 lbs.
GLC-4878	96" × 48" × 86" (98" with casters)	78"	736 lbs.
GLCK-8	8" × 3" caster kit for the GLC-4878		80 lbs.

SAFETY WARNINGS

- + Hold-down straps must be used at all times
- + GLC-3248, GLC-3660, and GLC-3672 have a 4,000 lbs. total weight capacity (2,000 lbs. per side)
- + GLC-4878 has a 8,000 lbs. total weight capacity (4,000 lbs. per side)

FABRICATION



GLC-3672

SINGLE SIDED SHOP CARTS

GLASS | STONE



SSSC-4036



SSSC-7248

FEATURES

- ▶ Safer and stronger than your average dry wall cart. Handily move products in the shop or at the jobsite
- ▶ With a depth of only 24", these carts are perfect for both commercial and residential installations
- ▶ Heavy-duty powder coated finish on all models
- ▶ Model SSSC-7248 includes (4) 8" casters (two rigid and two swivel brake) and hold-down straps
- ▶ Model SSSC-4036 includes (2) 5" swivel brake casters and (2) 10" pneumatic tires
- ▶ Model BB-40 includes (2) 5" swivel brake casters and (2) 10" pneumatic tires and a removable 8 1/2" wide wood floor
- ▶ Riveted rubber included on base and uprights

PART NUMBER	DIMENSIONS (l x d x h)	LOAD HEIGHT	WEIGHT
SSSC-4036 (Stone)	40" x 24" x 45"	36"	130 lbs.
SSSC-7248 (Stone)	72" x 24" x 56"	48"	200 lbs.
BB-40 (Glass)	40" x 24" x 45"	35"	135 lbs.

SAFETY WARNINGS

- + Hold-down straps must be used at all times
- + 2,000 lbs. total weight capacity on all single sided shop carts



BB-40

SSSC-4036

SIX WHEELED FABRICATION CARTS

GLASS | STONE



FC-82

FEATURES

- ▶ Two models with 360° maneuverability to move everything from full slabs to finished countertops
- ▶ Raised material supports for easy loading and keeping the finished material high off the ground
- ▶ Riveted rubber included on the powder coated base and uprights to help prevent slipping and to protect the material
- ▶ Ratchet straps provided to secure material to the cart

PART NUMBER	DIMENSIONS (l × d × h)	LOAD HEIGHT	WEIGHT
FC-48	48" × 28" × 47"	42"	170 lbs.
FC-82	82" × 28" × 73"	60"	253 lbs.

SAFETY WARNINGS

- + Ratchet straps must be used at all times
- + 3,200 lbs. total weight capacity

ALUMINUM INSTALL CART

STONE



FEATURES

- ▶ Lightweight aluminum frame install cart for jobsite use
- ▶ Rubber is mounted onto base and uprights to protect material
- ▶ High ground clearance for stairs, thresholds and curbs
- ▶ Comes with easy-to-use tightening brackets to secure material to cart
- ▶ Uses 10" semi-pneumatic tires (two swivel and two rigid with brake)

PART NUMBER	DIMENSIONS (l × w × h)	LOAD HEIGHT	WEIGHT
AIC	36" × 24" × 23"	38"	73 lbs.

SAFETY WARNINGS

- + 750 lbs. maximum weight capacity

HEAVY-DUTY DRYWALL CART

GLASS | STONE



FEATURES

- ▶ Economical way to move material around the shop or jobsite
- ▶ Material can be secured to the cart using hold-down straps (not included)
- ▶ Includes (4) 8" casters (three swivel and one swivel brake)
- ▶ Heavy-duty powder coated finish

PART NUMBER	DIMENSIONS (l × d × h)	LOAD HEIGHT	WEIGHT
DWC	48" × 22" × 49 1/2"	38"	90 lbs.

SAFETY WARNINGS

- + 2,000 lbs. total weight capacity, when evenly distributed

STONE DOLLIES

STONE



FEATURES

- ▶ Maneuvers easily indoors and outdoors
- ▶ 3" wide neoprene rubber is easy to clean, prevents slippage and lasts for years
- ▶ 12" width measured from outside of wheels for increased stability

PART NUMBER	LENGTH	TIRE SIZE	CASTER SIZE	CHANNEL HEIGHT	WEIGHT
SD-36	36"	10"	4"	6½"	25 lbs.
SD-48	48"	10"	4"	6½"	30 lbs.
SD-72	72"	10"	4"	6½"	40 lbs.

SAFETY WARNINGS

- + 1,000 lbs. total weight capacity with two 10" semi-pneumatic tires and two 4" casters (SD-36 comes with one 4" caster)

GLASS DOLLIES

GLASS



FEATURES

- ▶ Maneuvers easily indoors and outdoors
- ▶ 3" wide neoprene rubber is easy to clean, prevents slippage and lasts for years
- ▶ 5½" channel height

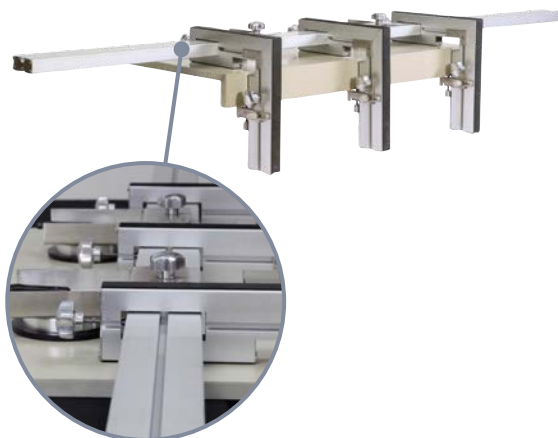
PART NUMBER	LENGTH	TIRE SIZE	CASTER SIZE	CHANNEL HEIGHT	WEIGHT
GD-48	48"	8"	3"	5½"	28 lbs.
GD-72	72"	8"	3"	5½"	35 lbs.

SAFETY WARNINGS

- + 500 lbs. total weight capacity with two 8" semi-pneumatic tires and two 3" swivel casters

MITER-UP

STONE



FEATURES

- ▶ The only clamping device designed to work with the countertop surface facing up
- ▶ Allows craftsmen to quickly and easily examine, align and adjust stone during the mitering process
- ▶ Engineered to create fine miter positions and joints on both natural and cultured stone
- ▶ Reduces back strain and stone breakage
- ▶ Cuts labor costs to a one person job
- ▶ Available in lengths up to 10'

PART NUMBER	DESCRIPTION	WEIGHT
MU200-6	6' bar, (3) L-clamps, (2) suction cups	27 lbs.
MU200-7	7' bar, (4) L-clamps, (2) suction cups	32 lbs.
MU200-8	8' bar, (4) L-clamps, (2) suction cups	34 lbs.
MU200-10	10' bar, (5) L-clamps, (2) suction cups	41 lbs.

FAB STAND

STONE



FEATURES

- ▶ Fabrication stand can be used in the shop or on the jobsite
- ▶ Collapsible for easy transport and storage
- ▶ Rubber mounted on top prevents sliding and scratches
- ▶ Helps to set up and stabilize your materials
- ▶ Heavy-duty powder coated finish

PART NUMBER	ADJUSTABLE HEIGHT	WEIGHT
FS-24	36" to 42"	38 lbs.

SAFETY WARNINGS

- + 500 lbs. total weight capacity retracted (300 lbs. extended)

CUT-OUT STAND

STONE



FEATURES

- ▶ Designed to support sink cut-outs during fabrication
- ▶ 12" x 12" base to support material
- ▶ Heavy-duty powder coated finish

PART NUMBER	ADJUSTABLE HEIGHT	WEIGHT
CSS	23½" to 40"	8 lbs.

TILT TABLE CART

STONE



FEATURES

- ▶ Fabricate and easily tilt stone upright
- ▶ Adjust table height from 36" to 42" to make fabrication easier
- ▶ Includes (4) 5" swivel casters and (4) adjustable foot locks to hold table in place
- ▶ Durable rubber is mounted on the top of the table to protect the material
- ▶ Heavy-duty powder coated finish

PART NUMBER	DIMENSIONS (l × w × h)	WEIGHT
TT3272	72" × 32" (35" with caster plates) × 35"	250 lbs.

SAFETY WARNINGS

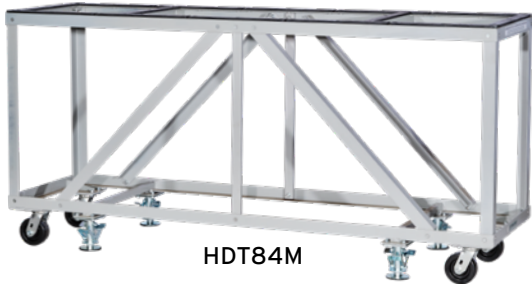
- + 600 lbs. total weight capacity

HEAVY-DUTY FABRICATION TABLES

STONE



DT2560



HDT84M



HDT84F

FEATURES

- ▶ Powder coated heavy-duty fabrication tables
- ▶ Model DT2560 allows you to layout complete kitchens by attaching multiple tables together lengthwise or at 90-degree angles
- ▶ Model HDT84 is available mobile or freestanding. Freestanding unit is supplied with four table legs with leveling feet
- ▶ For both models, mobile units are supplied with (4) 5" swivel casters and (4) adjustable foot locks to hold table in place
- ▶ Durable rubber is mounted on the top of the table to protect the material

PART NUMBER	DIMENSIONS (l × w × h)	WEIGHT
DT2560	60" × 25" (28" with caster plates) × 42"	176 lbs.
HDT84M	84" × 24" (27" with caster plates) × 42"	250 lbs.
HDT84F	84" × 24" (27" with caster plates) × 42"	240 lbs.

SAFETY WARNINGS

- + 600 lbs. total weight capacity

FABRICATION

GLASS CUTTING TABLE

GLASS



FEATURES

- ▶ Strong and solid powder coated glass cutting workstation
- ▶ Plywood is mounted to the top and bottom shelf with a 1" overhang
- ▶ Customer furnishes carpet and will be able to fasten the edges on the underside of the top
- ▶ Includes (4) 5" casters (two rigid and two swivel brake)

PART NUMBER	DIMENSIONS (l × w × h)	SHELF HEIGHT	WEIGHT
GCT-4884	84" × 48" × 36"	16"	325 lbs.



TR4482



TR4496

FEATURES

- ▶ Heavy-duty racks designed for transporting finished product to the jobsite
- ▶ Fork pockets mounted on all four sides with attached hoisting loops on the ends of base for adding lifting flexibility
- ▶ Riveted rubber included on the bottom shelf supports and uprights
- ▶ Quick release mounting pins change the transport rack from mobile to stationary in less than a minute
- ▶ Hold-down bars with straps included
- ▶ Durable hot dip galvanized finish
- ▶ Optional caster kit (CK-4) consists of (4) 8" casters (two rigid and two swivel brake)

PART NUMBER	DIMENSIONS (l × w × h)	LOAD HEIGHT	WEIGHT
TR4482	82" × 44" × 58" (69" with casters)	48"	540 lbs.
TR4496	96" × 44" × 66" (81" with casters)	56"	620 lbs.
CK-4	8" × 2" caster kit for TR4482 and TR4496		40 lbs.
HD-4482	Hold down bar assembly for TR4482		8 lbs.
HD-4496	Hold down bar assembly for TR4496		10 lbs.
RS-TR44	Replacement strap and ratchet for TR4482 and TR4496 hold downs		0.4 lbs.

SAFETY WARNINGS

- + 4,000 lbs. total weight capacity (2,000 lbs. per side)
- + Hoisting loops are rated at 1,000 lbs. each (4,000 lbs. total weight capacity)
- + The total load must be balanced and secured prior to moving, forklifting, transporting or hoisting. Groves Incorporated is not responsible for the securing of our racks for transport, or for the rigging and operators used in hoisting our racks

FABRICATOR TRANSPORT RACK



FEATURES

- ▶ Transport full jobs from the shop to the site
- ▶ Robust design prevents rack from flexing when lifting full loads
- ▶ Transport rack is fork-liftable from both ends
- ▶ Splash caddy inside of A-frame allows for extra storage
- ▶ Hold-down bars are positioned in line with upright supports
- ▶ Rubber pads on base are covered with a thick braided nylon jacket for extra protection
- ▶ Optional six wheeled cart with heavy-duty 8" casters (two rigid and four swivel brake) for easy mobility around the shop
- ▶ Heavy-duty powder coated finish

PART NUMBER	DIMENSIONS (l × w × h)	LOAD HEIGHT	WEIGHT
TR6K-K	84" × 41" × 53"	40"	786 lbs.
TR6K-Cart Kit	84" × 43" × 19½"		285 lbs.
TR6KHD	Hold down bar assembly for TR6K-K		7 lbs.

SAFETY WARNINGS

- + 6,000 lbs. total weight capacity (3,000 lbs. per side)
- + The total load must be balanced and secured prior to moving, forklifting or transporting. Groves Incorporated is not responsible for the securing of our racks for transport



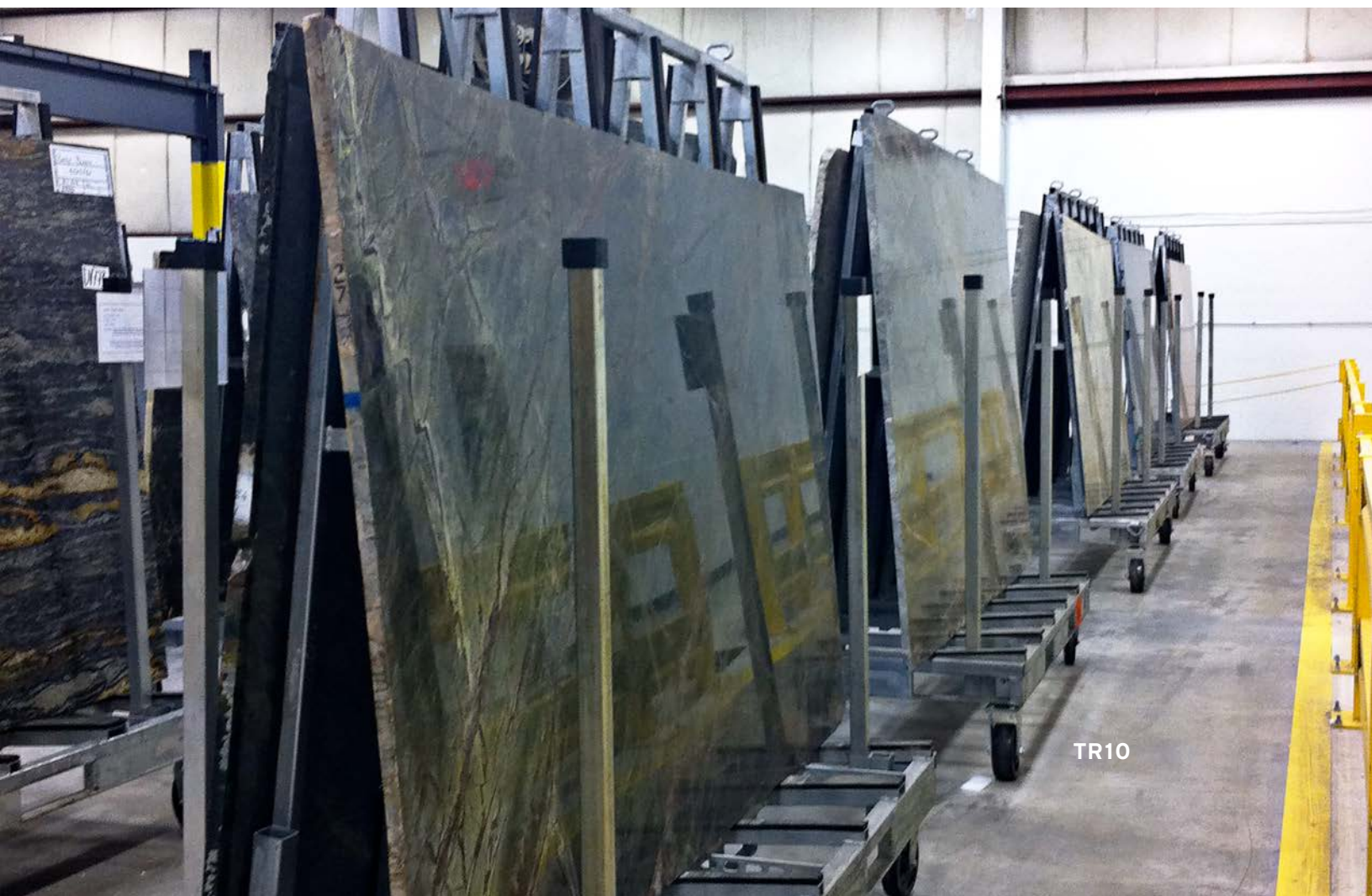
FEATURES

- ▶ The strongest transport rack available – designed to safely transport large loads of glass or stone
- ▶ Four adjustable safety posts allow for safe removal of unstrapped loads that may shift unexpectedly
- ▶ Safety posts are stored at the end of the A-frame during transport
- ▶ Quick release mounting pins change the transport rack from mobile to stationary in less than a minute
- ▶ 3" wide heavy-duty nylon ratchet straps included
- ▶ Durable hot dip galvanized finish
- ▶ Optional caster kit (CK-8) consists of (4) 8" heavy-duty casters (two rigid and two swivel break)
- ▶ Rubber is mounted on the base and upright for material protection

PART NUMBER	DIMENSIONS (l × w × h)	LOAD HEIGHT	WEIGHT
TR10	96" × 48" × 87" (99" with casters)	76"	905 lbs.
CK-8	8" × 3" caster kit for TR10 (2,000 lb. capacity per caster)		80 lbs.
RS-TR10	Replacement strap and ratchet for TR10		3.4 lbs.

SAFETY WARNINGS

- + 10,000 lbs. total weight capacity without casters (5,000 lbs. per side)
- + Total weight capacity with optional caster kit is 8,000 lbs. (4,000 lbs. per side)
- + The total load must be balanced and secured prior to moving, forklifting or transporting. Groves Incorporated is not responsible for the securing of our racks for transport



TR10

ECONOMY TRANSPORT CARTS

GLASS | STONE



ETC-8448



ETC-8460

FEATURES

- ▶ Designed for transporting finished product to the jobsite
- ▶ Fork pockets mounted on all four sides
- ▶ Includes hold down straps to secure material to cart
- ▶ Riveted rubber included on the base and uprights to protect material
- ▶ Includes heavy-duty 5" casters with quick release mounting pins to change the Economy Transport Cart from mobile to stationary in less than a minute
- ▶ Heavy-duty powder coated finish

PART NUMBER	DIMENSIONS (l x w x h)	LOAD HEIGHT	WEIGHT
ETC-8448	84" x 36" x 57" (63" with casters)	48"	331 lbs.
ETC-8460	84" x 36" x 69" (75" with casters)	60"	374 lbs.

SAFETY WARNINGS

- + 3,600 lbs. total weight capacity (1,800 lbs. per side)
- + The total load must be balanced and secured prior to moving, forklifting or transporting. Groves Incorporated is not responsible for the securing of our racks for transport



ETC-8448

SINGLE SIDED TRUCK RACKS

GLASS STONE



TRSS2482



TRSS2496

FEATURES

- ▶ Designed to transport all sizes of fabricated product
- ▶ Riveted rubber included on the base and back supports to protect material
- ▶ Hold down bars mount in slotted holes with quick release straps
- ▶ Mounting pads front and back for bolting to truck floor
- ▶ Fabricated with 1½" square steel tubing. Stronger than competitive models
- ▶ Durable hot dip galvanized finish

PART NUMBER	DIMENSIONS (l × d × h)	LOAD HEIGHT	HOLD DOWNS	WEIGHT
TRSS2482	82" × 24" × 50½"	48"	4	340 lbs.
TRSS2496	96" × 24" × 63"	56"	5	375 lbs.
HD2482	Hold down bar assembly for TRSS2482			8 lbs.
HD2496	Hold down bar assembly for TRSS2496			9 lbs.

SAFETY WARNINGS

- + 4,000 lbs. total weight capacity

TRUCK MOUNTED A-FRAME

GLASS STONE



FEATURES

- ▶ Transport full slabs and other materials on a securely mounted A-frame
- ▶ Includes six mounting plates
- ▶ Bottom U-channel holds 4 × 4 wood to support load (wood not included)
- ▶ Rubber mounted to A-frame uprights to protect material
- ▶ Durable hot dip galvanized finish

PART NUMBER	DIMENSIONS (l × w × h)	LEDGE	WEIGHT
TMA-6078	60" × 48" × 78"	18"	530 lbs.

SAFETY WARNINGS

- + Maximum weight capacity of 24,000 lbs., 12,000 lbs. per side, evenly distributed on each side

FORKLIFT BOOM

STONE



FEATURES

- ▶ Designed for use with 2 & 2½" ton forklift trucks
- ▶ Fully extended reach is 98"
- ▶ Safety catch included to prevent accidental removal of boom arm
- ▶ Telescopic arm for versatility and maximum operator visibility

PART NUMBER	LENGTH	WIDTH	HEIGHT	WEIGHT
FLB	Retracted: 62"	22"	Retracted: 15"	230 lbs.
	Extended: 102"		Extended: 18"	

SAFETY WARNINGS

- + Maximum weight capacity fully retracted: 3,306 lbs.
- + Maximum weight capacity fully extended: 1,102 lbs.

SPREADER BEAMS

GLASS | STONE



SB-108-5K

FEATURES

- ▶ Must use with slings. Slings should be sized according to the dimensions of the load being lifted
- ▶ SB-108-5K for use with slings up to 4" wide and handles glass up to 144" long; can hold up to 5,000 lbs.
- ▶ SB-168 for use with glass up to 130" x 204"; can hold up to 10,000 lbs.
- ▶ SSB-96 is designed for stone and made to be used with the SL-102 slings; can hold up to 10,000 lbs.

CALL FOR PRICING AND AVAILABILITY

- + Spreader Beams are a custom item and are subject to extended lead times. Call for pricing and availability

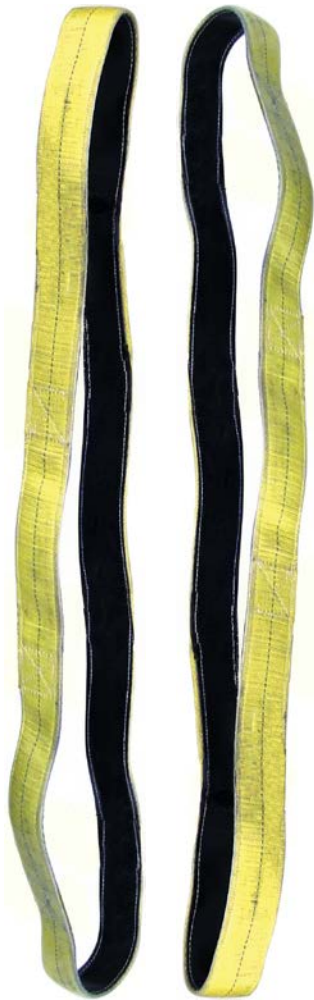
PART NUMBER	DIMENSIONS (l x w x h)	WEIGHT
SB-108-5K	108" x 4" x 15"	295 lbs.
SB-168	168" x 4" x 15"	600 lbs.
SSB-96 (Stone)	96" x 5" x 5"	198 lbs.

SAFETY WARNINGS

- + Opposing slings should be nested in the same corresponding slot on top of beam

STONE SLINGS

STONE



FEATURES

- ▶ Sold as a set of two
- ▶ 3" wide x 102" long for lifting stone up to 80" high when using our SSB-96 Spreader Beam
- ▶ Two-ply slings with full length pads sewn on the inside of body for wear protection

PART NUMBER	DIMENSIONS (l x w)	WEIGHT
SL-102	102" x 3"	30 lbs.

SAFETY WARNINGS

- + Inspect slings for wear and damage before each use
- + 16,300 lbs. total vertical load per pair

GLASS SLINGS

GLASS



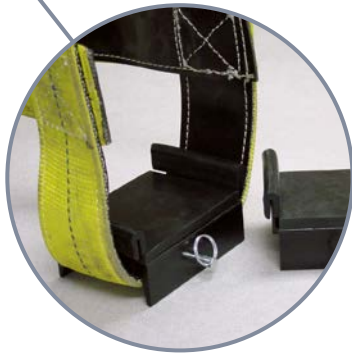
FEATURES

- ▶ Sold as a set of two
- ▶ To be used with our glass shoes to lift and move glass stoce packs to and from the truck and/or from storage to the cutting table
- ▶ The inside of slings and horizontal straps are covered with reinforced PVC coated material to help prevent cutting
- ▶ Made with 3" wide polyester webbing which minimizes elongation to 3% or less
- ▶ Velcro straps prevent slings from shifting on beam when not under load

PART NUMBER	DESCRIPTION	LENGTH	WEIGHT
SL-78S	For glass 36" up to 54"	78"	16 lbs.
SL-108M	For glass 60" up to 84"	108"	19 lbs.
SL-124L	For glass 72" up to 100"	124"	22 lbs.
SL-160J	For jumbo glass up to 130"	160"	26 lbs.

SAFETY WARNINGS

- + Inspect slings for wear and damage before each use
- + 9,600 lbs. total weight capacity per pair



FEATURES

- ▶ Sold as a set of two
- ▶ Adds extra support to prevent sling contact with raw edge of glass when lifting and moving
- ▶ Required use with purchase of our glass slings
- ▶ Complete with quick release pins for ease in mounting and removal
- ▶ Lined with neoprene rubber on base and sides to protect glass
- ▶ Made of heavy-duty black stamped steel
- ▶ Five sizes to fit most glass pack widths (minimize open space in shoe opening when sizing shoes to glass)

PART NUMBER	DIMENSIONS (l × w × h)	CHANNEL	WEIGHT
SH-4.75	5½" × 4" × 3"	4¾"	5 lbs.
SH-6.75	8½" × 4" × 3"	6¾"	7 lbs.
SH-8.5	10" × 4" × 3"	8½"	8.5 lbs.
SH-10.25	11¾" × 4" × 3"	10¼"	12.5 lbs.
SH-13.5	14¾" × 4" × 3"	13½"	16 lbs.

SAFETY WARNINGS

- + Customers must verify stoce pack width and weight with glass manufacturer



**Move It. Make It.
Take It. Store It.**



Durable and reliable material handling solutions play an important role in glass and stone fabrication efficiency. Groves products are engineered to address every aspect of the manufacturing and transportation processes. So, whether you need to fabricate, move, store or transport material, Groves offers rugged, high quality, dependable solutions to get the job done. Make the move to Groves – the titans of material handling.



*Storage.
Fabrication.
Transportation.
Material Handling.*



GROVES INCORPORATED

STRONGER. SAFER. SMARTER.

818 Trakk Lane, Woodstock, IL 60098

www.groves.com | sales@groves.com | 800.991.2120

Distributed by:

