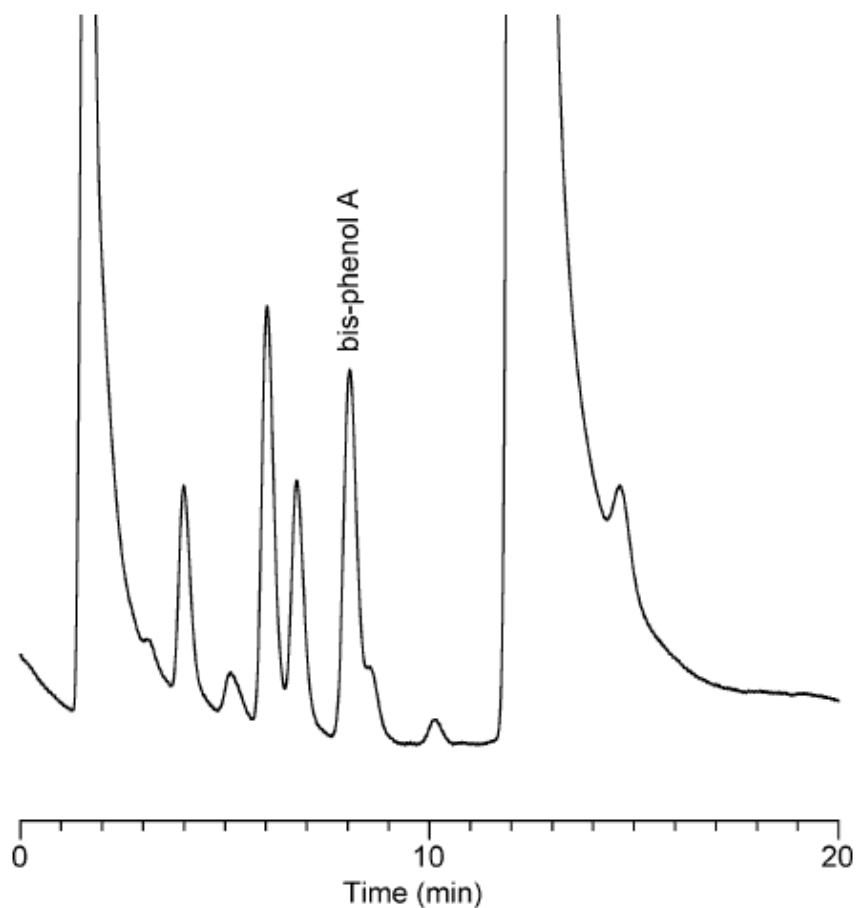


# InertSearch™ for LC

Inertsil® Applications

## Bisphenol A

Data No. LA327-0000



<u>R.Time</u>	<u>Area</u>	<u>Peak Name</u>
8.044	113217	bis-phenol A

Column : Inertsil ODS-3V  
5µm  
150×2.1mmI.D.

Solutes : 1. Bisphenol A

Column Cat. No. :

Eluent : CH<sub>3</sub>CN / 0.2% H<sub>3</sub>PO<sub>4</sub> solution = 40/60

Flow rate : 0.2mL/min

Col. Temp. : 40°C

Detection : ECD 950mV vs Ag/AgCl

Injection Vol. : 1µL

Sample : Phenol Resin spiked at 2g/mL of bisphenol