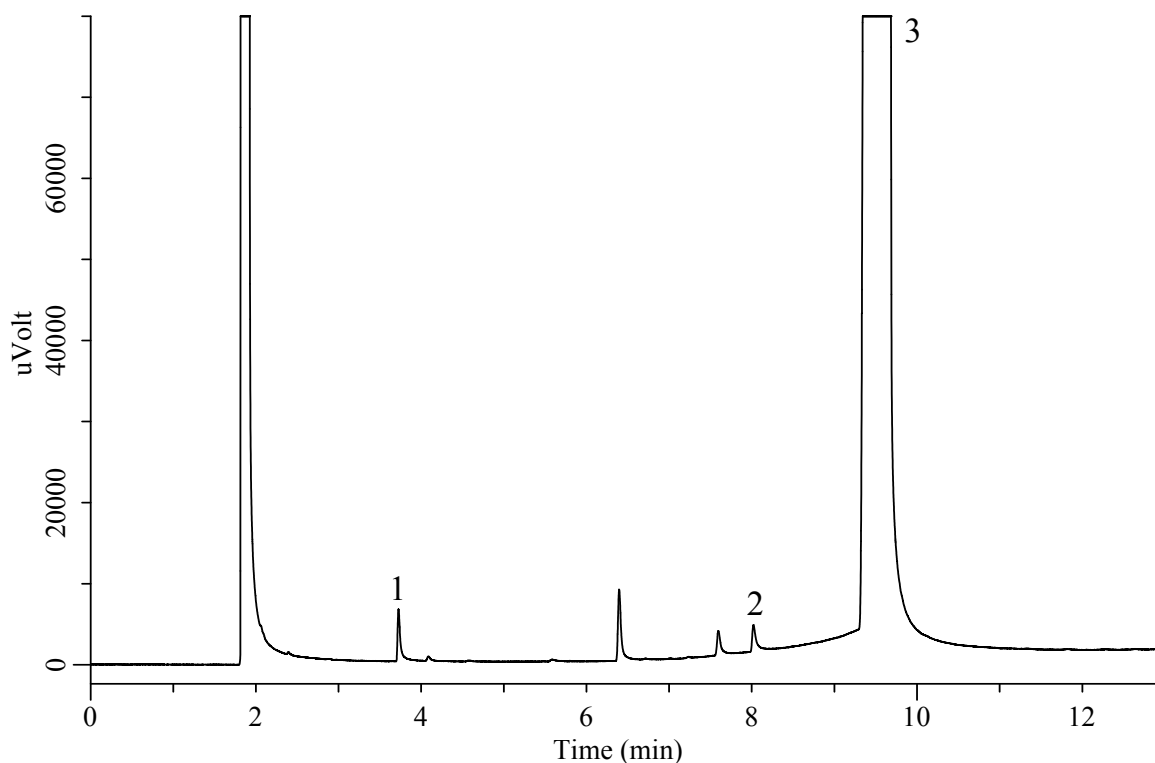


InertSearch™ for GC

InertCap® Applications

Glycerin, Concentrated glycerin (Under the Condition of Japanese Pharmacopoeia 16)

Data No. GA 262-0904



Conditions

System : GC-FID
Column : InertCap 1701
0.32 mm I.D. x 30 m df = 1.0 μm
Col. Cat. No. : 1010-61245
Col. Temp. : 100 °C — 7.5 °C/min — 220 °C
Carrier Gas : He 80 kPa
Injection : Split 1:20
220 °C
Detection : FID Range 10⁰
250 °C
Sample Size : 1 μL
Sample : Standard
Analyte in Methanol

Analyte

1. Ethylene glycol	50 mg/L
2. Diethylene glycol	50 mg/L
3. Glycerin	50000 mg/L
RSD of the peak area (1)(%)(n=6)	: 1.9 (≦ 10)
RSD of the peak area (2)(%)(n=6)	: 2.8 (≦ 10)