



TRUE VIEW BLACKOUT



OPTICAL AND THERMAL FACTORS

Color	Fabric Properties					Fabric & Glass		Recommended Comfort Classification				
	Thermal			Optical		SHGC % Improvement	SHGC	Thermal Control	Visual			
	Ts	Rs	As	Rv	Tv				Daylight Utilization	Glare Control	Night Privacy	Outward Visibility
TRUE VIEW BLACKOUT												
White*White	0	68	32	72	0	63%	0.13	3	0	4	4	0
White*Gray	0	59	41	64	0	60%	0.16	3	0	4	4	0
White*Sand	0	59	41	63	0	60%	0.17	3	0	4	4	0
Grey*Grey	0	30	70	33	0	50%	0.27	2	0	4	4	0
Black*Brown	0	24	76	27	0	48%	0.28	2	0	4	4	0
Black*Black	0	3	97	4	0	41%	0.35	1	0	4	4	0

Ts (Solar Transmittance): Percentage of solar energy that passes through the fabric.

Rs (solar reflectance): percentage of solar radiation reflected by the material.

As (Solar Absorption): Percentage of solar radiation captured by the fabric.

Visible Light Transmission (VLT): The total percentage of light radiation passing through tissue at a wavelength between 380 and 780 nm.

Rv (visible light reflectance): Total percentage of light radiation reflected by the material over a wavelength between 380 and 780 nm.

SHGC (Total Solar Factor): The amount of solar energy that actually enters a room through curtains and glass. A low value indicates high thermal performance.

Comfort classification according to EN14501: 0. Very limited effect 1. Limited effect 2. Moderate effect 3. Good effect 4. Excellent effect

MANUFACTURING

- Cutting: cold, ultrasonic or compression.
- Welding: hot compression, radio frequency, high frequency, impulse.
- It is recommended that you test all welding and cutting methods.

CLEANING AND MAINTENANCE

- Remove dust using a vacuum cleaner or compressed air.
- Handle the fabric with care, using clean, dry hands or gloves.
- Do not scrub the fabric; use only plant-based detergents.
- Avoid using solvents or abrasive substances.
- All chemicals can permanently damage the fabric. (When cleaning windows, lift the blinds to avoid contact with the fabric.)

TRUE VIEW BLACKOUT

Superior Privacy Screen

- **Welding Available:** Ideal for Zipper Blinds & Skylight Blinds
- Scratch & Abrasion Resistant for easy maintenance
- **Thermal Comfort:** Up to 68% of solar reflection (RS= 68% , SHGC=0.13)
- Meets Fire Resistance in most countries.
- Light Colorfastness 8 Grade (ISO105 B02)
- 6 Colors for more design inspiration; Optimizing solar protection in all applications, While maintaining a consistent design aesthetic
- **Available in 2 Widths:** 98" Rolls & 118" Rolls
- Excellent digital printing for custom design

118"

Maximum Width

Fire Resistant

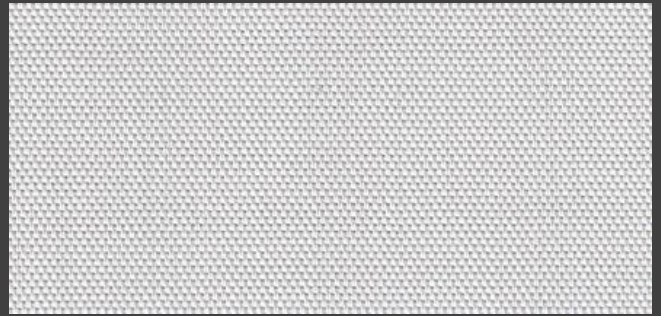
**Weldable and
Printable**



COLORS



TB-01 White * White



TB-02 White * Sand



TB-03 White * Grey



TB-04 Grey * Grey



TB-08 Black * Brown



TB-09 Black * Black

PRODUCT CERTIFICATE

Fire, Smoke Classification	FR (US) - NFPA 701 TM#1	BS (GB) - 5867 Part 2 Type B	CA - CAN ULC-S109-14-R2019
	B1 (CN) - GB17591	B1 (DE) - DIN4102	C1 (EU) - C1 GENERAL
Health & Safety	Oeko-tex Standard 100 Class IV	Greenguard Gold	MIF Certificate
	RoHS Directive (EU) 2015/863	EN71 Part 3: 1994	
	AATCC 112-2014	GB18586 - 2001	
Bacterial & Fungal Resistance	ASTM G21-15 0 Grade	None Fungal Growth	
	ASTM E 2180-07	Reduces more than 99.9% of bacteria	
Colour fastness to light	>Grade 8	ISO105 B02:2014	
	>4.0	AATCC TM 16.3-2014; Option 3 Xenon Arc Lamp	
Warranty	5 Years		



TECHNICAL DATA

STYLE		True View Blackout			
Composition		25% Polyester - 75% PVC		Mechanical	Resistance
Openness Factor		0% 100%		Breaking	Warp ≥2700 N/5cm ≥
UV Screen				(ISO 13934-1)	Weft 990 N/5cm
Width	Inch	98" - 118"		Tear	Warp ≥110 N
	cm	250 - 300			(ISO 4674)
Weight	oz/yd2	16.95 ± 5%		Packing	32.8 yards
(ISO 2286-2)	g/m²	575 ± 5%			
Thickness	Inch	0.027 ± 5%			
(ISO 2286-3)	mm	0.69 ± 5%			

APPLICATIONS





TWC



Tribute Window Coverings

📍 5905 Kennedy Rd
Mississauga, Ontario

☎ (905) 602-6377

✉ Info@Twcltd.ca