



Pictured: JULIET4XL

# HTC MODULAR & EXPANDABLE CONTAINER HOMES

## VIOLET & JULIET SERIES

For more information, call (02) 4545 2599 or visit online at [www.hometechclub.au](http://www.hometechclub.au)



**Pictured: JULIET2S**

# Contents



|                                  |           |                                     |           |
|----------------------------------|-----------|-------------------------------------|-----------|
| Council Approval . . . . .       | <b>3</b>  | Standard Inclusions . . . . .       | <b>12</b> |
| VIOLET Overview . . . . .        | <b>4</b>  | Customisation Guide . . . . .       | <b>13</b> |
| Size & Construction . . . . .    | <b>6</b>  | Electrical Setup . . . . .          | <b>15</b> |
| Standard Inclusions . . . . .    | <b>7</b>  | Plumbing Setup . . . . .            | <b>16</b> |
| Roof & Patio Extension . . . . . | <b>8</b>  | VIOLET & JULIET Utilities . . . . . | <b>17</b> |
| JULIET Overview . . . . .        | <b>9</b>  | Delivery Process . . . . .          | <b>18</b> |
| Sizing & Configuration . . . . . | <b>11</b> | Contact us . . . . .                | <b>20</b> |





Pictured: JULIET1L

# Council Approval & Permits

## No Approval Needed for 2 Years

*\*Check with your local council for the most up-to-date information regarding all permits and regulations*

In many parts of Australia, container homes used as displaced housing can be installed on your property without council approval or certification for up to two years. This is a great option for those needing urgent temporary accommodation.

After that two-year period, formal approvals may be required depending on your location, property zoning and how you intend to use this unit (e.g. granny flat, home office, studio or secondary dwelling). We can help you!

We can supply the engineering plans, specifications and documents needed for council submissions. We also work alongside trusted private certifiers and engineers who can help streamline the approval process.



# VIOLET SERIES

## EXPANDABLE CONTAINER HOMES

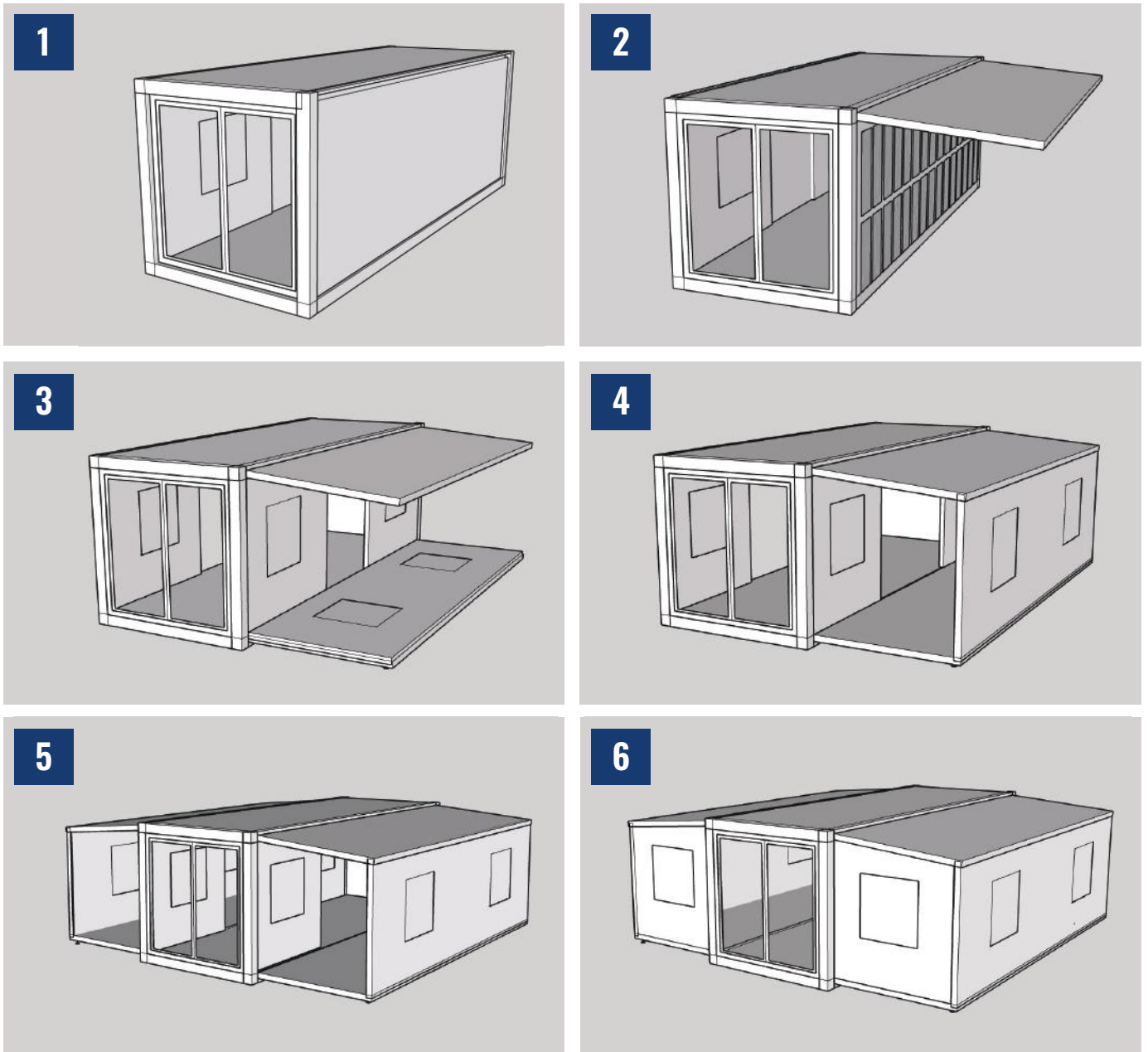


# VIOLET Expandable Series

## VIOLET Series

Our VIOLET Series units aren't your standard container builds. Unlike others, VIOLETS are constructed from the ground up, not from used shipping containers. They are designed to fit inside a 12.2m high-cube for easy transport. Once delivered and unpacked, the unit is placed on footings and expanded to full size via a hinged design that folds out the ceiling, floor and walls, effectively tripling its floor space.

### How we assemble our VIOLET:





# Size & Construction

## VIOLET Series

Our standard VIOLET layout is a versatile base designed to suit most needs. Available in standard or high ceilings at 20ft, 30ft, 40ft and your choice of black or white. See the standard inclusions for all expandable models.



|  |                          |                                    |
|--|--------------------------|------------------------------------|
| <b>20ft</b><br>(6.09m Long)            | <b>30ft</b><br>(9m Long) | <b>40ft</b><br>(12.19 Long)        |
| <b>Standard Ceiling</b><br>(2.3m High) |                          | <b>High Ceiling</b><br>(2.7m High) |
| <b>White</b>                           |                          | <b>Grey</b>                        |

## Exterior & Construction

VIOLET units feature a heavy-duty galvanised steel frame with EPS sandwich panel walls and ceilings, commonly used in cool rooms for superior insulation.

- Heavy duty galvanised steel frame for robust walls, floor and ceiling
- 75mm expanded polystyrene (EPS), galvanised steel sandwich panel walls/ceiling
- 18mm fibre cement board base, pre-fitted to steel frame, sub-floor material

## Flooring & Trim

Each VIOLET Series container unit comes standard with pre-laid PVC flooring.

- PVC flooring (grey colour as standard), pre-fitted to fibre cement board base layer
- Ceiling and floor skirting board trim with corner trim and capping pieces

## Windows & Doors

All exterior glass and windows are double glazed for better insulation and soundproofing. Interior and exterior doors are included (excluding additional sliding doors).

- Double glazed tempered glass sliding front door with lock and pull handle
- White aluminium window frame comes pre-installed and pre-fitted with windows
- Double glazed tempered glass windows with latch kit and window flyscreen
- Interior bedroom and bathroom doors with pre-fitted door handles and locks

# Standard Inclusions

## VIOLET Series

### Bedrooms

---

Bedroom size and number depend on the VIOLET unit size. Each includes a lockable door and at least one window. Bedrooms are typically placed on the right hand side but can be customised. Partition walls are used to create each room

- 20ft (36m<sup>2</sup>) VIOLET - features 2 bedrooms, one large, one small
- 30ft (54m<sup>2</sup>) VIOLET - features 3 bedrooms, one large, two small
- 40ft (72m<sup>2</sup>) VIOLET - features 3 bedrooms, three large

### Electrical

---

VIOLET units come pre-wired with power outlets and light switches installed in all main areas. Power is allocated for appliances, hot water, and air conditioning, with all wiring stemming from the central section due to the expandable design.

- Australian Standards approved electrical cabling, power points, switches & power box
- Two power outlets in large bedroom (with, one in the smaller rooms)
- Dedicated kitchen power on benchtop and in cupboards for appliances
- Bathroom power near the basin and for the washing machine underneath
- 50A rear input with included waterproof connector
- Round LED oyster-light for each room with pre-fitted switches

### Plumbing

---

As with the electrical, VIOLET units come with pre-fitted inlet and outlet plumbing, including separate drains for waste and grey water. All plumbing runs from the central section of the unit

- Plumbing fittings, taps, shower and other fixtures have WaterMark certification
- Plumbed hot / cold water inlets for connecting water supply and hot water system
- Grey water and waste water outlets at the rear of the unit
- Interior plumbing pre-fitted for kitchen sink, bathroom basin, toilet & shower

# Roof & Patio Add-On: Overview

## VIOLET Series Roof and Patio



The roof and patio extension is an optional addition to your VIOLET20, VIOLET30, or VIOLET40 container unit and is delivered separately as a component kit.

The kit includes parts for the patio frame, patio supports, patio flooring, roof frame, roof panelling, flashing and trim and all the necessary hardware and fasteners needed for installation.

Installation is required by professionals, and should be organised before delivery of your unit. We do not provide installation services but may be able to recommend an installer in your area.

Extension kit is not included in the purchase of a unit, contact us for pricing. Additional freight charges may also apply.

\*Due to the number of components in the kit, we cannot prevent scratching of the materials. It is strongly recommended that you use a Dulux Epoxy Enamel Paint to coat the Roof & Patio.



# JULIET SERIES

## MODULAR CONTAINER HOMES

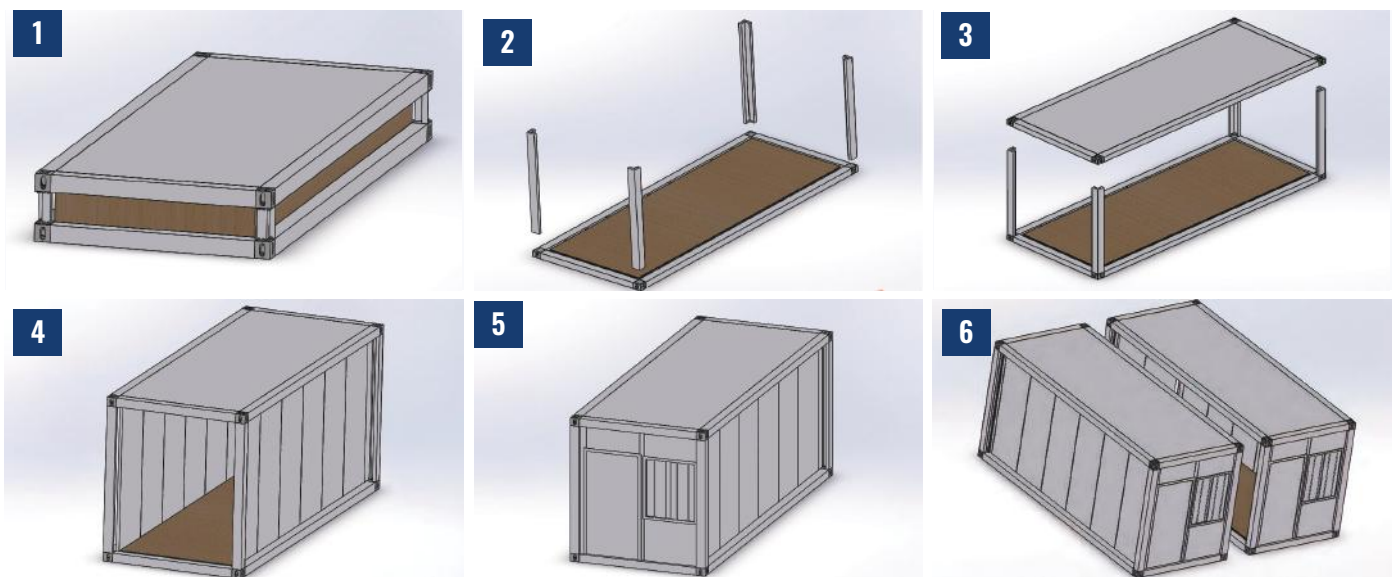


# JULIET Modular Series

## JULIET Series

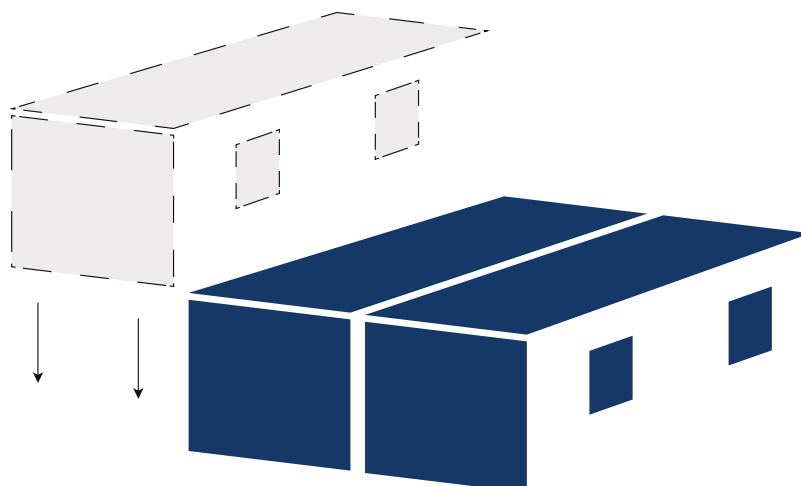
JULIET units are our premium modular buildings. They are purpose-built for flexibility, durability, and modern living. Unlike converted shipping containers, each JULIET is newly constructed and engineered to join seamlessly with others giving you complete control over size, layout, and function. Assembled in our NSW facility, each unit is delivered to your site, positioned on your prepared footings, securely joined, and sealed for a weather-tight finish. Custom layouts available on request.

### How they're assembled by HTC:



### What makes them modular?

Each JULIET unit can be connected using a bolt system to form a customised structure. Whether you need a single compact space or a larger, multi-room layout. The modular system allows full control over size and configuration.





# Sizing & Configuration

## JULIET Series

### What sizes are available?

Our JULIET Series is available in three versatile size options to suit a wide range of needs and site conditions: Standard (S), Large (L), and Extra Large (XL). Each size offers the same high-quality construction and smart design features, with varying dimensions to accommodate different space, layout and functionality requirements.



**S** 6 x 2.4m



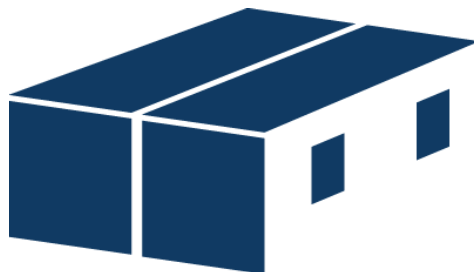
**L** 6 x 3m



**XL** 8 x 3m

### How many can i join together?

You can join as many modules as you like! Each size in the JULIET Series offers a range of configurations, from single self-contained units to multi-module layouts joined together to create a large home. With our custom design options you can choose the best size and layout to suit the unique needs of your site.



The number next to each JULIET model indicates how many modules are joined together. JULIET1 is a single standalone unit, JULIET2 is made up of two connected modules, continuing upward from there.

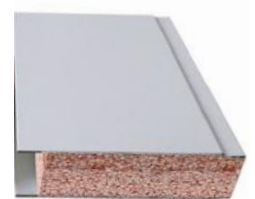
**Visit our website to view our configurations: [www.hometechclub.au](http://www.hometechclub.au)**

All size options come with a base configuration that allows ample room for customisation. Below are the standard inclusion featured in every JULIET model:

### Materials & Construction

---

- 75mm EPS + steel sandwich panel walls/ceiling (see above)
- Heavy duty galvanised steel frame (see right)
- 18mm fibre cement sub-floor board base, pre-fitted to steel frame
- Pre-wired powered outlets, switches and power box
- Australian standards approved electrical cabling
- 8x LED down-lights



EPS Sandwich panel



Gal. steel frame

### Windows & Doors

---

- Aluminum-framed double glazed windows with flyscreen mesh
- Heavy duty lockable swinging front door made from EPS with aluminum frame

### Standard Components

---

Add standard components to your JULIET design  
(components in-addition to standard designs are sold separately)

- Metal swing door
- Double glazed windows with screen
- Sliding glass door with screen
- Double GPO power point/ Light switch
- Bedside LED lights with USB port

### Additional Options

---

- Appliances
- Furniture
- Air conditioning
- Solar & battery storage
- Patio/Verandah
- Water tanks
- Septic tank system



# Customisation Guide

## JULIET Series

### Trifold Door

Add a trifold door along the long wall for seamless indoor/outdoor flow, Alternately a full-length window on the short wall brings in natural light.

\*Custom-built into the long wall only



## Walls & Flooring

### Tile Finishes- Wall & Floor

Choose from our section of tiles that can be applied to both floors and walls.

TERAZZO  
Glazed Ceramic Tile  
[Request Quote](#)



White/Gray

CARRARA  
Glazed Ceramic Tile  
[Request Quote](#)



White/Grey, Gloss/Matte

### Timber Feature's

Make a statement with a timber accents.

Timber Trim (top only)



100ft Timber Feature Wall or Grey Timber

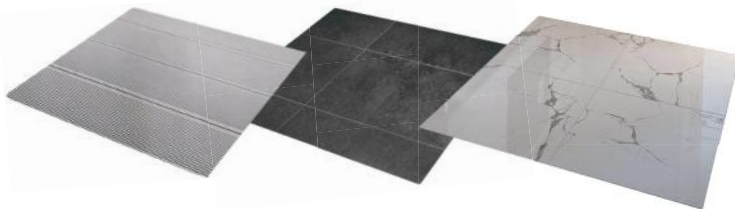


# Customisation Guide

## JULIET Series



All veranda options come as a kit with your JULIET, ready for on-site installation. We'll help you choose roof and flooring materials to match your unit for a cohesive, stylish finish.



Talk to our team about these custom options!





# Electrical Setup

## JULIET Series

Each JULIET unit comes pre-wired with an Australian Standard electrical system, using certified components and installed by licensed trades. A single industrial plug allows quick grid connection, while external inlets make linking multiple units simple for fast transport, setup and relocation.

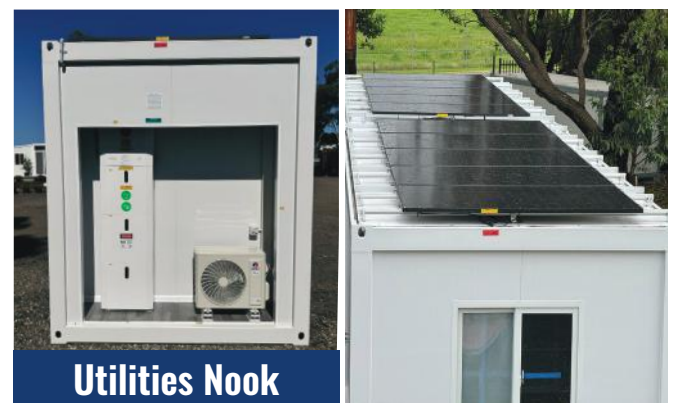
### Whats Included:

- Certified light switches, power outlets, LED down-lights
- Internal switchboard with safety circuit breakers
- Full internal cabling, fitted and tested prior to delivery
- Isolation switches for key appliances
- Industrial-grade exterior plug-in power connection (like a caravan)
- Weatherproof exterior inlets for multi-module configurations



### Off- Grid Ready:

- Optional solar power generation system
- Lithium battery storage
- Solar inverter installation
- Outdoor recessed "Utilities Nook" to house solar, hot water and more



We provision dedicated electrical circuits for appliances with high power draw, so you can run an electric oven, split-system air conditioning, fridges, etc.

i

Final connection to the grid must be completed by a licensed electrician.

# Plumbing & Water Systems

## JULIET Series

JULIET units are built for efficient water and waste management on-grid, off-grid, or in between. All plumbing is Australian-installed with certified parts to suit your setup.

### Key Features:

---

- All hot and cold water and waste lines pre- installed
- Exterior plumbing outlets for fast connection
- Flexible placement of inlets/ outlets to suit your land and layout
- Waterproofing done by specialists to ensure long-term performance
- Compatible with both council connections and off-grid setups

For faster setup and easier servicing, we place water and waste outlets on exterior walls—but we're happy to customise this for your container home.



Bathrooms and kitchens come ready to go fully waterproofed fitted with mixer taps, waste drains and ready for connection.



# System & Utilities

VIOLET & JULIET Series

## Septic Systems

---

Multiple capacity options from 1500L to 2500L to suit residential and off-grid setups.

## Hot Water Systems (Brands vary)

---

Gas or electric systems to match your unit size and usage including continuations flow and heat pump models.

## Accessibility Options

---

- Grab rails
- Accessible toilets and shower fittings
- Folding shower seats
- Mixer taps
- Unisex toilet & shower signage

## Water Storage & Pumps

---

Reliable water solutions for off-grid living:

- Bushmans tanks up to 10,000L for water harvesting
- High-quality Italian-made Lowara pumps with Genyo electronic controllers

## Air Conditioning

---

Reverse cycle units from 2.5kW to 9.6kW with heating, cooling and WiFi control.

## Energy Solutions

---

Solar setups tailored to your energy and off-grid needs.

- Panel systems up to 7kW
- Battery storage systems up to 20kWh

## Appliances

---

- Fridges (bar and full size)
- Front load washing machines
- Heat pump dryers
- Gas and electric ovens
- Rangehoods



# Your Home Build & Delivery Process

## 1. Choose Your Unit

Both the VIOLET and JULIET series start by selecting the layout and size that suits your needs, and we'll provide a written quote



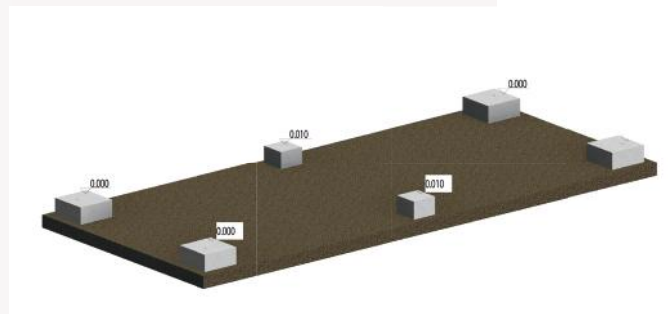
## 2. Place Your Order

Both the VIOLET and JULIET homes require a 20% deposit to secure your order and lock in your production timeline



## 3. We Build, You Prepare Site

While your JULIET is being built to spec in our facility, and the VIOLET is prepped for delivery, you'll need to prepare your site with level footings like besser blocks or a concrete slab.



## 4. Your Unit is Delivered to Site

Once complete, your unit is delivered to your site- the JULIET arrives fully built, while the VIOLET comes ready for expansion





## 5. Crane Into Place

The JULIET is craned into position, while the VIOLET is expanded manually by a small team, unfolding the walls and roof onto your footings



## 6. Join & Seal

If your JULIET includes multiple modules, they are sealed together on-site, whereas the VIOLET is weather-sealed and fastened using the provided components following the installation guide



## 7. Connect Services

Both units require licensed trades to connect power, water and sewage, with guidance provided ahead of time to streamline the process



## 8. Move in & Enjoy

Once everything is connected and complete, you're ready to settle in and enjoy your new space!



# Visit Australia's Largest Display Village for Modular & Expandable Homes

59 Mulgrave Rd, Mulgrave NSW 2756, Australia

Contact us:

P: **(02) 4545 2599**

M: **0400 843 365**

E: **[sales@hometechclub.au](mailto:sales@hometechclub.au)**

**[www.hometechclub.au](http://www.hometechclub.au)**



Home Technology Club (HTC)  
is a company of Cornick Pty Ltd.  
Copyright 2025, all rights reserved HTC.