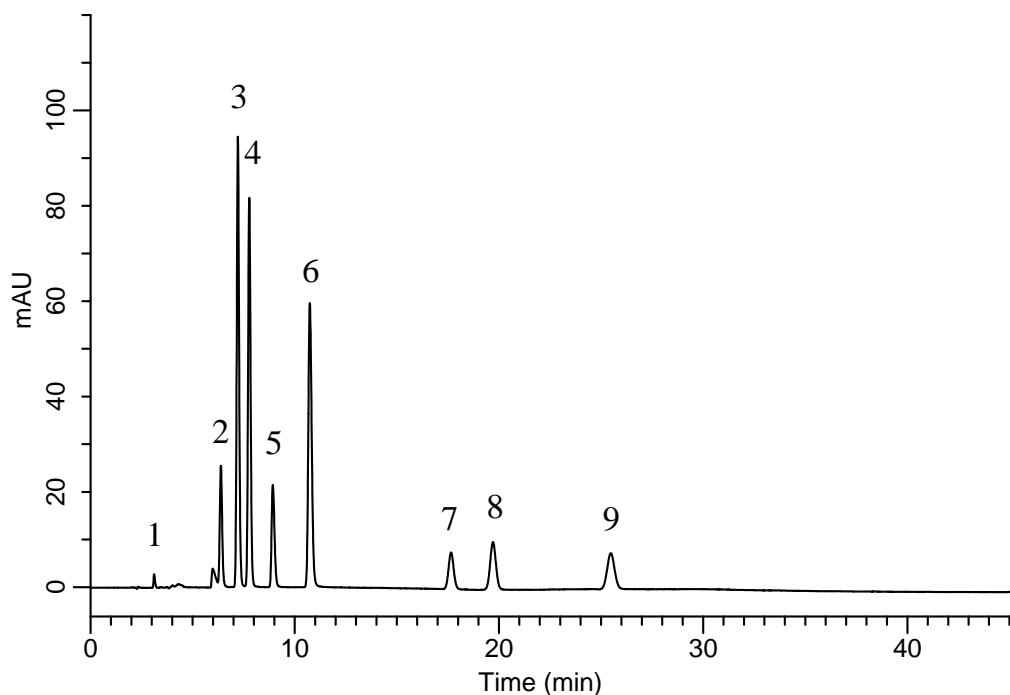


InertSearch™ for LC

Inertsil® Applications

Analysis of Preservatives and Sweetener

Data No. LB242-0894



Conditions

System : GL-7400 HPLC system
Column : Inertsil Ph
(5 μ m, 250 x 4.6 mm I.D.)
Column Cat. No. : 5020-01328
Eluent : A) CH₃CN
B) 0.1% H₃PO₄ in H₂O
A/B = 15/85, v/v
Flow Rate : 1.0 mL/min
Col. Temp. : 40 °C
Detection : UV 210 nm (GL-7452 PDA Detector)
Injection Vol. : 10 μ L
Sample : Standard

Analyte:

| | |
|----------------------------------|---------|
| 1. Ascorbic acid | 10 mg/L |
| 2. Aspartame | 10 mg/L |
| 3. Caffeine | 10 mg/L |
| 4. <i>p</i> -Hydroxybenzoic acid | 10 mg/L |
| 5. Acesulfame potassium | 10 mg/L |
| 6. Saccharin sodium | 10 mg/L |
| 7. Sorbic acid | 10 mg/L |
| 8. Benzoic acid | 10 mg/L |
| 9. Dehydroacetic acid | 10 mg/L |