



**NEW
RELEASES**
ONLINE MIDDAY AEDT
FRIDAY 6 DECEMBER

OUTTURN

Celebrating on Friday 6 December

Issue 12, 2024



FIND THE GOODS HERE: SMWS.COM.AU

CONTENTS

The most wonderful time of the year...
Adam Ioannidis 4

The times they are a'changin — well, not really...
Andrew Derbidge 10



OUR BOTTLINGS

SPICY & SWEET

Cask No. 36.204
Truly an outlander 29

SPICY & DRY

Cask No. 39.307 (**Malt of the Month**)
Welcome in, 2025 8

Cask No. 35.328
High definition 29

JUICY, OAK & VANILLA

Cask No. 130.8
White chocolate cherry blossom 16

Cask No. 72.112
Delicate, delightful and dainty 30

LIGHTLY PEATED

Cask No. 4.396 (**Creators Collection**)
Heather Ember 25

Cask No. 4.335
Herbal harbourside harmony 30



YOUR SOCIETY

Your Membership

WIN one of three SMWS Advent Calendars!.....**34**

WIN a bottle of our Premium Malt of the Month!.....**36**

Virtual tasting

Fantastic festive flavours.....**39**

Society experiences

See you at our events.....**40**



PEATED

Cask No. 66.257 (**Creators Collection**)
Fern & Flame**21**

Cask No. 53.495 (**Creators Collection**)
Peat Bloom**22**

Cask No. 29.293 (**Creators Collection**)
Moss and mist**26**

RYE WHISKEY

Cask No. RW7.2
Chocolate sundae on a Saturday night**33**

BLENDED MALT

Cask No. R7.4
Still crazy after all these years**33**





THE MOST
WONDERFUL
TIME OF THE YEAR

.....
BY ADAM IOANNIDIS



It's been a wild ride this year. From our first-ever full-blown fèis experiences in Melbourne and Sydney, to our Country Director's appointment to SMWS Europe (Matt's still looking out for us from afar), and just the staggering amount of releases we've put out over the last 12 months. We've also welcomed a new team member onboard: Lachlan Watt comes in as our new Brand Ambassador and if you haven't already, you will most likely see him around some tastings and festivals throughout 2025.





“MOST EXCITING IN THIS ISSUE, IS THE FIRST REVEAL FROM OUR NEW RANGE COMING IN 2025 — THE CREATORS COLLECTION SERIES, WHICH IS THE EVOLUTION OF OUR VAULTS COLLECTION AND PREMIUM RANGE OF BOTTLINGS.”

December Outturn is always an interesting issue as it comes so soon after the massive November release; where could we possibly go from the sheer awesomeness that is November Outturn?

Well, I'm so glad you asked.

For starters, this month's Malt of the Month (a gloriously herbal, Spicy & Dry 39) will be familiar to some as the second Winter Series bottling (part of the same set as November's Cask 115.33). Many people were asking in the Outturn chat on our Facebook Group (if you haven't joined, feel free to jump in for all things Society) whether or not we were getting the Winter Series bottlings — well here's #2!

Plus, we welcome back Distillery 130 to Australian shores with the 8th ever Society bottle from this Japanese distillery, made with concerto barley (like the .7 we saw earlier this year)...this is certainly not one to be missed as you never know when the next Distillery 130 release will be.

However, most exciting in this issue, is the first reveal from our new range coming in 2025 — the Creators Collection series, which is the evolution of our Vaults Collection and Premium range of bottlings.

Each Creators Collection is carefully curated to tell a story through the maturation, region, flavours, and art of each bottling.

We are immensely excited to be able to offer up the first ever Creators Collection to our Society members: Peat Plants, a collection of four peated whiskies, available individually or as a set in limited quantities.

It's been a terrific year with some truly memorable experiences all around the country and believe me when I say that 2025 is going to top it. Big things are in the works, the first of which you'll already see in this issue with the Peat Plants bottlings, but it won't stop there.

Thank you to all who joined us for the non-stop rollercoaster that was 2024, the local team and I cannot wait to share with you the spectacular plans ahead.

Until then, please enjoy December Outturn, slàinte.



A.I.

Adam Ioannidis ~
Marketing Manager
& Outturn Editor,
SMWS Australia

THE ULTIMATE NEW-YEAR DRAM!

WELCOME IN, 2025

SPICY & DRY

CASK No. 39.307
\$195

| | |
|-----------------------|-------------------------|
| REGION | Speyside |
| CASK TYPE | 1st fill bourbon barrel |
| AGE | 12 years |
| DATE DISTILLED | 5 December 2011 |
| OUTTURN | 191 bottles |
| ABV | 61.4% |
| AUS ALLOCATION | 36 bottles |

TASTING NOTES

Initial nosing suggested to us coconut shavings and new world IPAs with plenty of exotic fruity hops. Beyond that we also noted crushed nettles and grass, citrus peels and new leather shoes. With water we found fresh, crisp cereals, white mushrooms, young calvados distillate, chopped chives and hessian. There was lots going on ... In the mouth we found a surprising medical aspect up front with ointments, wintergreen and cough mixtures, making it rather herbal, with nice notes of aniseed and mint tea. Water brought a light waxiness to the texture, along with more drying herbal qualities, impressions of breath mints and herbal toothpaste. We found a lovely, lingering cooling sensation in the aftertaste.

FROM THE TEAM

Those with keen eyes would have spotted this bottling in our November/December virtual tasting pack. Now you can read the full notes and specs as we see a Winter Series bottling as Malt of the Month for the second month in a row! If Cask 115.33 was the Christmas pudding dram, this is certainly the digestif you enjoy after, almost akin to a herbal-like amaro. Cask 39.307 Welcome in, 2025 really showcases the spirit quality of Distillery 39 and its diversity — we've seen Spicy & Sweet and DRDF this year alone, now welcome Spicy & Dry to the mix. A tasty treat and good opportunity to add to your Winter Series set. **Available on Outturn day, December 6th, midday AEDT.**

MALT
OF THE
MONTH

REDUCED
FROM \$220

LIMIT 1 PER
MEMBER





THE SCOTCH MALT WHISKY SOCIETY

W

SOCIETY CASK No. 39-307
WELCOME IN, 2025

SINGLE MALT SCOTCH WHISKY

GLASGOW

YEARS **12** AGED

700ml e

CHAIRMAN'S COLUMN

.....





THE TIMES THEY ARE A'CHANGIN — WELL, NOT REALLY...

.....
BY ANDREW DERBIDGE

The Scotch whisky industry as we know it today is — depending on your yardstick — around 250-300 years old. Whisky has, of course, been around for much longer, but the existence of an industry with distilleries making commercial quantities of spirit to sell in one form or another to the public started to take shape around the mid-to-late 18th century. Distilleries like Bowmore (1779), Strathisla (1786), and Highland Park (1798) are still running today, notwithstanding the occasional hiccups from time to time over the journey.



The irony here is that my use of the phrase “as we know it today” is a bit cheeky, bordering on inappropriate. Truth be told, the mechanics and intricacies of today’s industry are almost unrecognisable from what they were a century or two ago. But the beauty of this industry that I love is that some things do remain constant. And they’re the important things! Whisky is still just barley, yeast, and water; we allow this concoction to ferment, we then distil it, and we leave it to mature in an oak cask for a few years. Despite the

enormous changes that have happened with technology, size, scale, markets, marketing, ownership, operations, and finance over the last few centuries, the core essentials are unflinching and still there.

The Scotch Malt Whisky Society is, in some ways, a microcosm of the larger industry we’re a part of. We can’t boast centuries of existence, but we’ve certainly seen significant change, evolution, and development over our 41 years. There have been huge swings and adjustments, ebbs and flows, changes at a corporate level, changes in ownership, and so on. Just like the larger industry, some aspects of what the Society does today are unrecognisable from what they were at the start of our journey, but the constants remain: Great quality whisky; cask-strength







"DESPITE THE ENORMOUS CHANGES THAT HAVE HAPPENED WITH TECHNOLOGY, SIZE, SCALE, MARKETS, MARKETING, OWNERSHIP, OPERATIONS, AND FINANCE OVER THE LAST FEW CENTURIES, THE CORE ESSENTIALS ARE UNFLINCHING AND STILL THERE."

spirit (well, mostly!); no artificial colouring; no chill-filtering; a distinctive green bottle (well, mostly!); Members Rooms in Edinburgh; and the joy of sharing whisky with others.

Our own branch here in Australia has also naturally seen change as we adapt and evolve. Who remembers the days of just three or four Bottling Lists coming out each year? The old labels on our bottles? The Bob Dewar artwork and branding? Getting personalised SMWS correspondence in the mail from the likes of John Rourke, Andre Tammes, or myself? The quarterly newsletters (essentially a magazine!) we produced in-house that was the precursor to Outturn? The local Tasting Panel and the local Australian-written tasting notes we produced to supplement the UK notes? Bottles from Distillery 24 for less than \$180? ;-)

No, I'm not getting nostalgic or looking back through rose-coloured glasses — merely recounting that there's been constant development and evolution of our local Aussie branch since we kicked off here in November, 2002. Change is inevitable, but the tenets and core of our local branch here remain unchanged.

We again saw change recently with Matt Bailey accepting an incredible opportunity to play a bigger role with the Society, which saw him relocate to Edinburgh. I couldn't be prouder! It's a well-earned and natural step for him, and one I know he didn't deliberate over for too long!

We thus welcome Lachlan Watt to the team to fill the void. Our branch first employed a full-time brand ambassador back in 2014; Lachlan becomes the third person to take on the mantle. Lachlan has one of the most impressive CVs in the drinks game, and you'll struggle to meet a more personable, generous, knowledgeable, hospitable, passionate, and nicer person! Although based in Melbourne, he'll no doubt be getting around to the other cities in due course to say hello and share a dram. (And, if you can't wait until then, be sure to sign up for our Virtual Tasting on 18th December with Lachlan, Adam, and myself.)

It's now officially "silly season" and our Society Christmas parties are fast approaching. If you've not ventured out to one of our events this year, may I encourage you to join in the fun and come and celebrate the year with some great drams and great people.

On behalf of our local crew — Suzy, Lachlan, Adam, Donelle, myself and our many State Ambassadors...thanks for a fantastic 2024 and we look forward to doing it all again, and more, in 2025!



A handwritten signature in black ink that reads "Andrew Derbidge".

Andrew Derbidge ~
Chairman &
NSW Manager,
SMWS Australia



SPRING DREAMING IN JAPAN

WHITE CHOCOLATE CHERRY BLOSSOM

JUICY, OAK & VANILLA

CASK No. 130.8
\$899

| | |
|-----------------------|-------------------------|
| REGION | Japan |
| CASK TYPE | 2nd fill bourbon barrel |
| AGE | 9 years |
| DATE DISTILLED | 1 November 2014 |
| OUTTURN | 168 bottles |
| ABV | 62.2% |
| AUS ALLOCATION | 18 bottles |

TASTING NOTES

Juicy red apples and green limes dangled from branches as we strolled in the sunshine. A gust of wind stirred the sweetly scented honeysuckle and cherry blossom, creating a colourful cloud that rained on to freshly opened coconuts and crunchy dried banana chips. Adding water caused wild strawberries to spring up from the ground, ready to be dipped in thick cream and dusted with white chocolate flakes. Poached pears were now among the other orchard fruit, alongside peaches and cherries dripping with syrup from tinned fruit salad. Tropical notes then returned with battered bananas, refreshing coconut juice, and the unique spiciness of a sandalwood tea chest.



LIMIT 1 PER
MEMBER



FROM THE TEAM

Distillery 130 needs little introduction — it's not the oldest Japanese distillery, but you could certainly say it is one of the most coveted. We're proud to be releasing Cask 130.8 White chocolate and cherry blossom in December, our second Cask Distillery 130 cask for the year! Like the .7, 130.8 is distilled concerto barley, giving it a distinctively aromatic and floral flavour — think wild strawberries, poached pears, thick cream with bananas and coconut juice. Distillery hype aside, this is a phenomenal single-cask, cask-strength (62.2%) expression and will make for perfect summer sipping with good friends. Only 18 available in Australia, limit of 1x bottle per member.



CREATORS COLLECTION

Introducing the next evolution in exceptional Society whisky...
Peat Plants — the first of our Creators Collection series.

If you thought December Outturn couldn't get any better...then you better buckle up. The Scotch Malt Whisky Society is proud to introduce **Peat Plants**, the first series of our new **Creators Collection** range.

What are *Creators Collection* bottlings?

As of 2025, Vaults Collection and Premium bottlings will cease production and be replaced by the Creators Collection. These are carefully considered and matured sets of old whiskies, each with their own unique story and theme; all collections will be available as sets and to purchase individually. Peat Plants is the first Creators Collection set to be released globally, and we're excited to be able to offer it up in December Outturn.

Peat Plants

The "Peat Plants Collection" invites members to explore the diverse landscapes of Scotland through the lens of peated whisky, each bottle representing a different aspect of the natural world that contributes to the unique character of these spirits.

From the floral elegance of "Heather Ember" to the powerful, medicinal punch of "Moss & Mist," this collection offers a sensory journey through the peatlands, unveiling the deep connection between the land and the liquid.

"We're excited to unveil The Creators Collection, a new addition to our tradition of innovative whisky releases, building on the success of collections like the '26 Malts' from 2005, 'Far Flung Flavours' in 2009, 'Jazz Trio' in 2018, and the '1.9.8.3. Anniversary Case' in 2023. Each new release will explore unique flavour stories with both creative and technical inspiration. Themes will explore subjects such as our traditional home at The Vaults in Leith, the diversity of our peated whiskies, and whisky production techniques and cask maturation. We look forward to sharing these exceptional releases in the near future."

– Kai Ivalo, Whisky & Supply Chain Director

A limited number of bottles and sets will be available for pre-order from November 29th, midday AEDT.

Extremely limited quantities to go around with just 2x complete sets available for purchase from Friday, 6th of December midday AEDT. Don't miss your chance to own the first-ever Creators Collection set, Peat Plants, and open something truly magnificent for Christmas this year.







JWC
VAULTS, LEITH



SINGLETY CASK NO. 66.257 / OUTTURN: 1 of 257

FERN AND FLAME

THE SCOTCH MALT WHISKY SOCIETY

26

IN THE CREATORS COLLECTION
Peat Plants: The essence of
Scotland's untamed landscapes

SINGLE MALT SCOTCH WHISKY

53.2% VOL (70cl e)

FERN & FLAME

PEATED

CASK No. 66.257

\$449

| | |
|----------------|---|
| REGION | Highland |
| CASK TYPE | 1st fill American oak Oloroso hogshead |
| AGE | 26 years |
| DATE DISTILLED | 23 October 1997 |
| OUTTURN | 257 bottles |
| ABV | 53.2% |
| AUS ALLOCATION | 19 bottles |



TASTING NOTES

Coconut rain drops trickled from minty and menthol green leaves before splashing on to steak charred by an applewood fire. A haze of thick smoke then drifted between hop vines and sage shrubs before teasing beef and venison carpaccio. A few drops of water caused tropical fruit to plummet from the green canopy above, landing with a thud on to damp earth infused with oil-covered hay from the back of a tractor. An elegantly herbal finish fused sweet vermouth with cocktail bitters, before butterscotch, T-bone steaks and peppered mackerel arrived in a soft leather satchel. After spending 24 years in an ex-bourbon hogshead this was transferred to a first fill American oak oloroso hogshead for the remainder of its maturation.

STORY

Fern & flame is inspired by the lush, green ferns that thrive in the Highlands. The name represents the interplay between the verdant, leafy vegetation and the smoky intensity of the peat fires that dry the malt, giving this whisky its distinctive flavour.

PEAT BLOOM

PEATED

CASK No. 53.495

\$899

| | |
|----------------|-------------------------|
| REGION | Islay |
| CASK TYPE | Refill bourbon hogshead |
| AGE | 33 years |
| DATE DISTILLED | 23 January 1991 |
| OUTTURN | 211 bottles |
| ABV | 44.1% |
| AUS ALLOCATION | 16 bottles |



CREATORS
COLLECTION

TASTING NOTES

On the sea breeze came wafts of smoked trout and coal tar from a trawler carrying hessian sacks of sweet-scented barley grains. Puffs from its polished brass funnel dropped fine ash on to smoky apple sauce sprinkled with a few coriander seeds. Fruity notes developed after a dash of water. Now, sour apples and pineapples rolled across the sandy beach as the hot sun baked the stone walls of the harbour. Gentle floral characters then embraced lavender and elderflower, before sage, thyme and gooseberries were served on lemon tarts with orange chocolate and toffee-coated nettles.

STORY

Peat bloom draws on the concept of a bloom, symbolizing the full expression of flavours that emerge from this peated malt. This whisky is a celebration of the complex layers of smoke, maritime influence, and delicate sweetness that unfold like a flower blooming in the peat-rich soil of Islay.



JW&C
JAMES WATSON & CO.
VAULTS, LEITH



SOCIETY CASK NO. 53,495 / DUTTURN: 1 of 211

PEAT BLOOM



THE SCOTCH MALT WHISKY SOCIETY

33 THE CREATORS COLLECTION

Peat Plants: The essence of
Scotland's untamed landscapes

SINGLE MALT SCOTCH WHISKY

40% VOL. 70cl e



MWS
VAULTS, LEITH



SPECIAL CASK NO. 4,396 / OUTTURN: 1 of 591

HEATHER EMBER

25

THE CREATORS COLLECTION
Peat Plants: The essence of
Scotland's untamed landscapes

SINGLE MALT SCOTCH WHISKY

49.5% VOL. 70cl e

HEATHER EMBER

LIGHTLY PEATED

CASK No. 4.396

\$599

| | |
|----------------|---------------------------------|
| REGION | Highland |
| CASK TYPE | 1st fill Oloroso ex-Bodega butt |
| AGE | 25 years |
| DATE DISTILLED | 9 June 1999 |
| OUTTURN | 591 bottles |
| ABV | 49.5% |
| AUS ALLOCATION | 18 bottles |



TASTING NOTES

We all agreed this one was immediately stunning, as wispy Orcadian peat smoke mingled with impeccable, old-style sherry. It was observed more than once that this whisky was highly reminiscent of MUCH older official bottlings from this distillery. The nose evolved with beautiful and generous aromas of waxes, dried mushrooms, hessian, lapsing souchong tea and flinty coastal notes. Water brought peppery pastrami meatiness, black pepper, game salami, haggis nachos and dark fruits pickled in ancient balsamic. Loads of gamey, leathery and salty sherry vibes met natural tar extracts, medicines and gorgeous, dry, heathery Orkney peat low down in the mix. With water we found such wonders as chip-shop brown sauce, layers of pipe tobacco and heather honey. This profile lingered long into the stunning aftertaste; rich with verbena, aged herbal liqueurs and old-school shilling ales. At 19 years of age, we combined selected casks from the same distillery. We then returned the single malt into a variety of different casks to develop further. This is one of those casks.

STORY

Named after the resilient and aromatic heather plant that carpets the Orkney landscape, Heather ember captures the subtle, floral smokiness characteristic of Distillery 4's peated whisky. The heather, often used in the peat cutting process, lends a gentle, earthy sweetness that is mirrored in the whisky's profile.

MOSS AND MIST

PEATED

CASK No. 29.293

\$899

| | |
|----------------|-------------------------|
| REGION | Islay |
| CASK TYPE | Refill bourbon hogshead |
| AGE | 25 years |
| DATE DISTILLED | 11 November 1998 |
| OUTTURN | 152 bottles |
| ABV | 53.3% |
| AUS ALLOCATION | 10 bottles |



CREATORS
COLLECTION

LIMIT 1 PER
MEMBER

TASTING NOTES

Salted butter slowly melted over ripe mango, pineapple and lemon in an old coal scuttle. The oily tears mingled with fine ash before being poured over cured ham and mackerel fillets shrouded in a veil of lavender and heather smoke. Tropical fruits merged with clove-studded gammon on the palate, glazed with fragrant runny honey. A few drops of water unveiled smouldering leaf mulch and charred pine logs with sticky sap and creosote on the nose. Then a handful of dried apricots and seaweed, steeped in antiseptic cream, were served with melon, peppermint, and chamomile petals on a bed of salty seaside pebbles.

STORY

Reflecting the dense, moss-covered terrain of Islay, Moss & mist embodies the whisky's iconic, medicinal peatiness. The name evokes the damp, misty bogs that give rise to the rich, iodine-infused character of this powerhouse malt.



SOCIETY CASK NO. 29,293 / DUTTY: 1 of 152

MOSS AND MIST

THE SCOTCH MALT WHISKY SOCIETY

25 THE CREATORS COLLECTION

Peat Plants: The essence of Scotland's untamed landscapes

SINGLE MALT SCOTCH WHISKY

53.2% VOL. 70cl e



TRULY AN OUTLANDER

SPICY & SWEET

CASK No. 36.204
\$219



| | |
|----------------|---|
| REGION | Speyside |
| CASK TYPE | 1st fill French oak Jamaican rum barrique |
| AGE | 13 years |
| DATE DISTILLED | 8 June 2009 |
| OUTTURN | 272 bottles |
| ABV | 57.5% |
| AUS ALLOCATION | 30 bottles |

On the neat nose we could have been forgiven for thinking it was a rum. The scent of green herbs, fruits soaked in spiced rum, and rum and raisin chocolate were only offset by Atholl brose, that Scottish drink mixing oatmeal brose, honey and whisky. The wealth of fresh mint on the palate was soon overwhelmed by a Jamaican jerk seasoning. To taste, we found spiced rum coffee with butterscotch whipped cream. Following 10 years in an ex-bourbon hogshead, we transferred this whisky into a first fill French oak barrique that had previously matured Jamaican rum.

HIGH DEFINITION

SPICY & DRY

CASK No. 35.328
\$159



| | |
|----------------|-------------------------|
| REGION | Speyside |
| CASK TYPE | 1st fill bourbon barrel |
| AGE | 9 years |
| DATE DISTILLED | 28 June 2012 |
| OUTTURN | 215 bottles |
| ABV | 60.4% |
| AUS ALLOCATION | 36 bottles |

A rather big and fulsome profile greeted us at first nosing. Lots of sweetened rapeseed oil, waxed canvass, barley sugars, shoe polish and buttery popcorn. A wee lactic yoghurt vibe in the background as well. Some water developed this further towards milk bottle sweeties, then scone mix, yellow plums and dried meadow flowers. Some varnished oak and white pepper added warmth. When neat the palate displayed notes of chamois leather, sandalwood shaving foam, heather flowers and bergamot tea. A touch of coconut water too. Reduction brought cask char, pineapple jelly, putty, breakfast cereals and juicy fruit chewing gum. A lean, spicy and drying finish was lip smackingly satisfying.



DELICATE, DELIGHTFUL AND DAINTY

JUICY, OAK & VANILLA

CASK No. 72.112

\$159

EXTRA MATURED



| | |
|-----------------------|------------------------------|
| REGION | Speyside |
| CASK TYPE | Refill Panamanian rum barrel |
| AGE | 8 years |
| DATE DISTILLED | 17 September 2013 |
| OUTTURN | 219 bottles |
| ABV | 61.7% |
| AUS ALLOCATION | 42 bottles |

An intensely sweet, floral aroma greeted the Panel like a fragrant stroll through a sun-drenched orange grove with a white rum and elderflower cocktail in your hand. Plenty of freshly cut sugar cane on the palate with cinnamon dusted green apples and baked peaches with vanilla, nutmeg and cloves. After reduction we imagined walking through a luscious rainforest, exotic flowers such as orchids and bird of paradise next to tropical foliage plants with large leaves. Now we enjoyed strawberry tarts, pineapple upside cake and a mojito. Following four years in an ex-bourbon hogshead, we transferred this whisky into a re-fill barrel previously maturing rum from Panama.

HERBAL HARBOURSIDE HARMONY

LIGHTLY PEATED

CASK No. 4.335

\$199

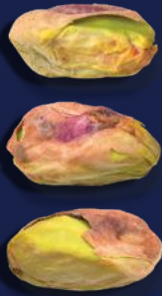
EXTRA MATURED



| | |
|-----------------------|-------------------------|
| REGION | Highland |
| CASK TYPE | 1st fill bourbon barrel |
| AGE | 12 years |
| DATE DISTILLED | 29 October 2009 |
| OUTTURN | 241 bottles |
| ABV | 62.7% |
| AUS ALLOCATION | 48 bottles |

Our noses detected smoked almonds and smouldering hay, buttery grilled mackerel, lavender and a French polisher's kit. The palate combined bacalhau and smoked fish paté with clean, tingly notes of menthol, tea tree and mojitos. The reduced nose suggested wax jackets on a harbour, fresh cut grass, coal and Hershey's chocolate. The palate's delicate herbal smoke spiralled around flavours of yellow fruit pastilles, cape gooseberries and wild mint. At eight years of age, we combined selected casks from the same distillery. We then returned the single malt into a variety of casks to develop further. This is one of those casks.





CHOCOLATE SUNDAE ON A SATURDAY NIGHT

AMERICAN RYE WHISKEY

CASK No. RW7.2
\$220



| | |
|-----------------------|------------------------|
| REGION | Michigan |
| CASK TYPE | New oak charred barrel |
| AGE | 4 years |
| DATE DISTILLED | 16 April 2018 |
| OUTTURN | 184 bottles |
| ABV | 59.5% |
| AUS ALLOCATION | 30 bottles |

It must have been the weekend because Turkish delight and pistachio fudge were out on the town with milk chocolate and red berry jam, and they were in the mood to party! Getting fruity with cranberry jelly and a bunch of overripe bananas, they were not shy with the mince pie and had all-night fun with the hot cross bun. However, with water came the urge for a tropical tango as melon, papaya and mango turned up the tempo. Chocolate praline hooked up with peaches and cream just before the final song of the night serenaded waxy oranges, strawberry tarts and honeydew melon on the cask char dancefloor.

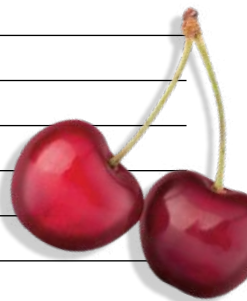
STILL CRAZY AFTER ALL THESE YEARS

JAMAICAN RUM

CASK No. R7.4
\$299



| | |
|-----------------------|-----------------------|
| REGION | Jamaica |
| CASK TYPE | Refill bourbon barrel |
| AGE | 21 years |
| DATE DISTILLED | 30 September 2000 |
| OUTTURN | 172 bottles |
| ABV | 54.7% |
| AUS ALLOCATION | 24 bottles |



An abundance, or even better an explosion, of esters centring mainly on strawberries either doused in vinegar or petrol with further aromas being marker pens, pear drops and peppermint oil, crazy! Absolutely huge neat like downing a woo-woo cocktail, made with cherry and peach flavoured vodka, lime juice, strawberry puree, cranberry juice and garnished with cherry laces. Water and time can tame it somewhat, if that's what you want, with sweeter notes of wagon wheel biscuits and pineapple wine being joined on the palate by peanut butter, teak oil and firefighters.

SAVOUR THE 12 DRAMS OF CHRISTMAS

It's the most wonderful time of year to sit back, relax and savour 12 exquisite whiskies from The Scotch Malt Whisky Society. Ease yourself towards Christmas with our stunning selection of hand-picked single casks and more.

Keep your eye out for a bottle with a gold cap and additional information on the label. You might be picking up an extra treat from the generous elves working away at the Society! If you get lucky, call our DRAM-cierge team on +44 (0) 131 555 2929 or email memberservices@smws.com with the code to claim your special Christmas prize.

Head to www.smws.com/12drams for details and a video presentation on each day's dram, and share your thoughts with fellow members [#smws12drams](https://twitter.com/smwsuk)



YOU BELONG HERE

Share your experience: [#smws12drams](https://twitter.com/smws12drams)



WIN 1 OF 3 SMWS ADVENT CALENDARS



Join the world's leading whisky club today and be in the draw to receive one of three SMWS Advent Calendars!

These luxurious box sets contain 12x 50ml bottles of different Society bottlings (one of which is a Premium-livery bottling) celebrating the 12 days of Christmas; the box itself is made from sturdy, thick cardboard and is beautifully presented making it a treat to open and enjoy. Plus, each dram has a tasting video presented by our UK team, which you can watch by scanning the included QR code.

All you have to do to win one of these boxes is join The Scotch Malt Whisky Society in November or December with any one of our membership types, and we'll pick three lucky winners in early January! Start your journey in flavour with some serious variety and discover the joys of full-flavoured, single-cask whisky with the SMWS!

New members must have joined between the 1st of November and 31st of December (11:59pm AEDT). Offer is limited to new members, not renewals. Offer is not available to those who've previously been a member in the last 3 months of the SMWS, regardless of branch. Offer not transferrable, or redeemable for any other offer.





WIN A BOTTLE OF CASK 35.331 LIFE-CHANGING MAGNIFICENCE

Show us your whisky flight and win a bottle of our Premium Malt of the Month!

What's better than enjoying a nice Society dram? Enjoying three, of course! (Please drink responsibly.) We're offering up 3x bottles of our November Premium Malt of the Month, Cask 35.331 Life-changing magnificence, to three lucky winners who can put together some impressive three-dram whisky flights!

What's the catch? **You have to use our three-dram tasting mat that we're including with every bottle purchase between the 15th of November and 24th of December.** It could be a differing flavour journey, distillery vertical (who's up for a three-dram line-up of Distillery 10s?), complementary flavours, different cask finishes, and so on.

Craft your own whisky flight, post it on our Instagram or Facebook group, and we'll announce the winners in January — this is a double November and December member competition!

Competition runs between the 15th of November and the 24th of December inclusive, and is only open to members of SMWS Australia, and those who have purchased a bottling between the 15th of November (entrants must use the provided tasting mat) and 24th of December, 11:59pm AEDT. Winners will be announced in early January.







VIRTUAL TASTING

FANTASTIC FESTIVE FLAVOURS



WEDNESDAY 18 DECEMBER @ 7PM AEDT

What's better than a five-dram tasting pack? An EIGHT-dram tasting pack, that's right! We're turning up the heat this festive season with eight delightfully tasty drams to satiate your appetite for full-flavoured whisky — it's a bumper festive virtual kit! Join your newest National Ambassador, Lachlan Watt, alongside Adam Ioannidis and Andrew Derbidge for a historic evening of banter, knowledge and fun on Wednesday the 18th of December at 7pm AEDT. 8x drams (including the 27-year-old Premium Malt of the Month from November), a tasting mat, and a menu — \$2000+ value for just \$149! Whilst the virtual pack has sold out, you can still join us online on Wednesday the 18th of December at 7pm AEDT

CASK 112.110 – BRIGHT AND DAZZLING

CASK 35.331 – LIFE-CHANGING MAGNIFICENCE

CASK 63.104 – BANANA ICE CREAM SMOOTHIE

CASK 128.20 – DELIGHTFULLY BONKERS

CASK 39.307 – WELCOME IN, 2025

CASK 115.33 – MERRY CHRISTMAS

CASK 55.76 – PETALS IN AN ORANGE BITTERS COCKTAIL

**CASK 10.230 – SEARED LANGOUSTINE TAILS IN
CAMELISED BACON**

SOCIETY EXPERIENCES

MELBOURNE

MELBOURNE CHRISTMAS CRUISE

Dust off the captain's cap because Melbourne members will be enjoying a joyous boat cruise on a sunny afternoon with plenty of Society drams and snacks to keep you going all afternoon. We've had plenty of members asking when our next boat event will be — well here it is! Tickets are on sale now!

Saturday 7th December, 12:00pm
Docklands, Melbourne, VIC.

SYDNEY

ROBBIE BURNS NIGHT WITH THE SOCIETY

Join NSW Ambassador Andrew Derbidge for a traditional Robbie Burns supper with bagpipes, haggis (and we can't forget the haggis address), and tasty Society drams. Feel free to dress up in your kilts! Tickets to be announced soon.

Saturday 25th January, 6:30pm
Royal Automobile Club, Sydney, NSW.

SYDNEY

AN EVENING WITH IAN MCWILLIAM FROM GLENFARCLAS

Join us for a very special evening of drams and tales as we welcome Ian McWilliam (Glenfarclass Distillery) for an SMWS tasting. More details to be announced in early 2025, but this is one not to miss!

Friday 7th March, Location TBC

LAUNCESTON

LONNIE CHRISTMAS COLLECTIVE!

Five drams + a craft beer + some snacks for this year's Lonnie Christmas party hosted by TAS Ambassador Tom Rofe in the quiet private of The Barrel Collective. Catch up with friends and try some tasty Society drams, then hang around after the bar opens to the public. On sale now!

Saturday 7th December, 12:00pm
The Barrel Collective, Launceston, TAS.

HOBART

HOBART BOWLS, BEERS & DRAMS

Enjoy an evening of Society drams at the North Hobart Bowls Club followed by a brewery crawl with fellow Society members at Tassie Ambassador Tom Rofe for lunch and refreshing ales — tickets are on sale now!

Saturday 14th December, 5:30pm
North Hobart Bowls Club, Hobart, TAS.

PERTH

PERTH CHRISTMAS EVE SUNDOWNER BBQ!

Join State Ambassador David Stucken on the Terrarium rooftop for a festive BBQ and some tasty SMWS drams as you welcome in the Christmas spirit with good company and stellar weather. Tickets are on sale now!

Monday 23rd December, 1:00pm
Terrarium Bar, Perth, WA.

ALWAYS MORE EVENTS BEING ADDED ON [SMWS.COM.AU/EVENTS](https://www.smws.com.au/events)





SMWS.COM.AU

FESTIVE ORDERING

For stress-free delivery in time for Christmas, we recommend placing your order by Friday 13th December. For faster/priority delivery by Australia Post, select Express Post in the online store, or contact our office.

FESTIVE SEASON OPENING HOURS

The Society's office will be closed from Tuesday 24th December, re-opening on Thursday 2nd January. The online shop is always open. Orders placed online between Christmas and New Year will be dispatched in the first week of January.

**WE WISH YOU AND YOURS A HAPPY,
HEALTHY AND SAFE FESTIVE SEASON!**

02 9974 3046

Mon-Fri 9.00am - 5.00pm AEDT

 **@SMWSAustralia**

 **AUSTRALIANSMWS**

 **SMWS_AUS**