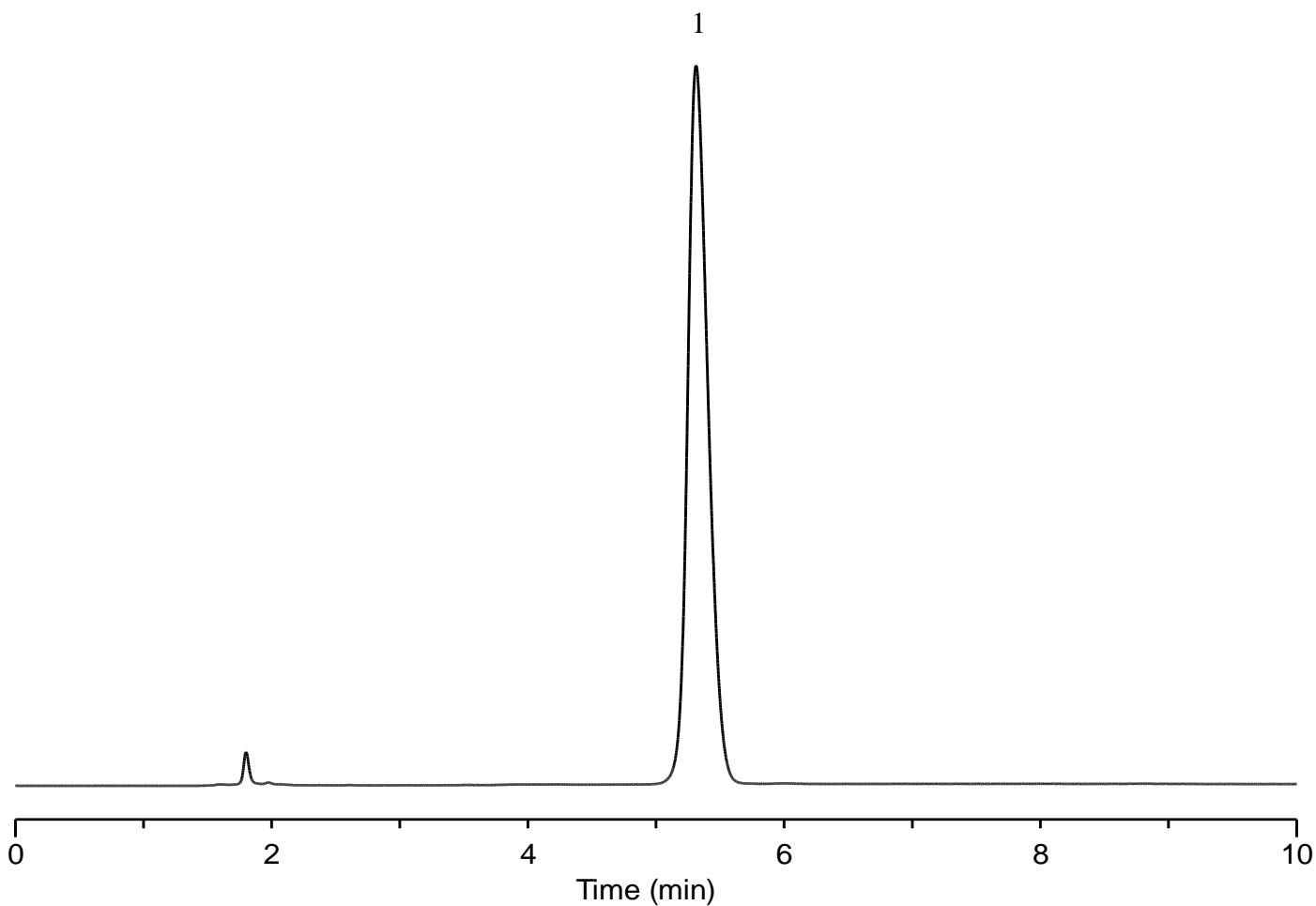


# InertSearch™ for LC

Inertsil™ Applications

## Analysis of Sertraline

Data No. LB611-0806



### Conditions

**Column** : InertSustain Cyano (5  $\mu$  m, 250 x 4.6 mm I.D.)

**Column Cat. No.** : 5020-89277

**Eluent** : A) CH<sub>3</sub>OH  
B) 0.1% H<sub>3</sub>PO<sub>4</sub> in H<sub>2</sub>O  
A/B = 50/50, v/v

**Flow rate** : 1.5 mL/min

**Col. Temp.** : 30 °C

**Detection** : UV 210 nm

**Injection Vol.** : 10  $\mu$  L

**Sample** : Standard

### Analyte:

1. Sertraline 50 mg/L

Symmetry factor (1) : 1.24