

THE CHARENTE

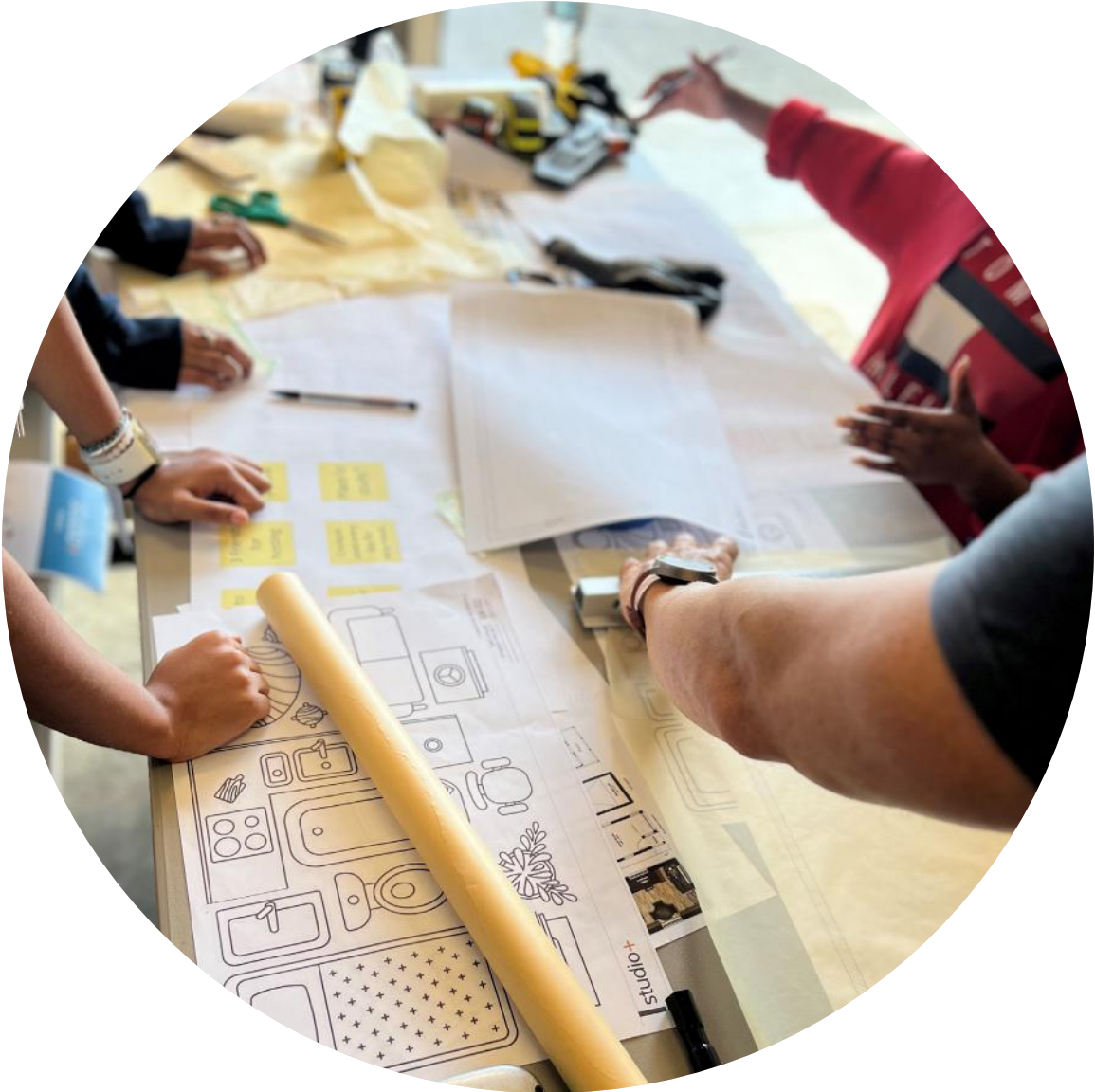


a studio+ quarterly



Spring

edition 4 – spring 2023



charette noun

cha·rette

variants: charrette \ she'ret \

definition: the intense final effort made by architects to complete their solutions to a given architectural problem in an allotted time.



THE CHARETTE

contents

1	damon's desk: a letter from the ceo	4
2	addy, addy, addy	8
3	south gate educational center	10
4	5 organizations to excel your career in healthcare	16
5	embracing identity	22
6	experts corner: security for the classroom perimeter	26
7	projects on the rise	30
8	product parade	32
9	culture	40

damon's desk:

A letter from the CEO

Breaking Ground on Innovation and Recognition

I am pleased to report that our firm has made great strides in the architecture world this past quarter. We have exciting news to share regarding our upcoming education project in Los Angeles and some internal recognitions and promotions that we are thrilled to announce.

Firstly, we are honored to have been awarded a local ADDY award by the American Advertising Federation for The Charette. This is a tremendous accomplishment for our team, and we are grateful to be recognized for our hard work and creative vision.

In addition to our award, we proudly announce the promotions of three highly skilled women within our firm. These individuals have demonstrated exceptional talent, commitment, and loyalty to their craft and the firm. We are excited to see them continue to grow and thrive in their new positions.

Last but certainly not least, we are excited to reveal South Gate Educational Center, a satellite campus for Los Angeles Community College District. We dive into the project site's history, revealing



challenges and opportunities for our design-build team. We believe this project will significantly impact the community and serve as a testament to our firm's commitment to design excellence.

We thank you for your continued support and look forward to sharing more updates with you in the future.

Damon Romanello
CEO | Founder
Studio+



We create design
solutions that
have powerful results



THE CHARENTE

spring edition 4

contributors.

CREATIVE DIRECTOR Joy Brownworth

CONTENT EDITOR Brianna Quiggle

FACT CHECKER Tara Thompson

GUEST WRITERS

Taylor Brewington

Steve Bull

ADDITIONAL CONTRIBUTIONS

Rachel Hunter

Diran Depanian

Carlos Marcet

Vanessa Tyler

studio+

Studio+ provides a wide array of services within architecture and interior design across numerous markets including education, healthcare, senior living, and corporate. We unite these services to bring a unique product to our clients - seamless services that deliver results beyond typical expectations.

wearestudioplus.com

marketing@wearestudioplus.com

239.476.8888

12271 Towne Lake Drive
Fort Myers, Florida, 33913

about the cover.

South Gate Education Center

A 105,000-square-foot satellite campus to East Los Angeles College plans to provide both higher educational opportunities to locals and new careers in various fields in a traditionally underserved community. The new school will eventually host 3,000 students and include classrooms, wet labs, student services, a library, an architecture studio, a music room, an auditorium, and more. This will all serve the community of South Gate to promote significant economic and educational growth.

the editors.



BRIANNA QUIGGLE

communications & content strategist
studio+

From internship to senior associate, Brianna is a Studio+ veteran of eight years. We like to call her a jack-of-all-trades since she has had a hand in everything from public relations and marketing to finance and operations. She is a graduate of Florida Gulf Coast University with a BS in Marketing and currently guides strategic content messaging and proposal pursuits at Studio+. A Florida girl, despite her New England origins, Brianna resides in Naples, FL. When she is not seeking out information for the next content piece, she puts on her mom jeans and becomes CEO of the Quiggles.



JOY BROWNWORTH

creative director
studio+

Joy is an award-winning designer with a proven track-record of developing brand identities, strategic marketing campaigns, and new business development. Today you'll find her as the Creative Director at Studio+, where she is dedicated to company marketing and branding. Born in Texas, raised in Georgia, Joy graduated from the Savannah College of Art and Design with a BFA in Visual Effects. Outside the office, you can find her making plans to visit a new country or trying to lower her handicap on the golf course.

AMERICAN
ADVERTISING
AWARDS

2023
BEST OF DIGITAL

STUDIO+

DIGITAL PUBLICATION

"THE CHARETTE, SUMMER 2022"

aaf
southwest
florida

AMERICAN
ADVERTISING
AWARDS

2023
JUDGES CHOICE

STUDIO+

DIGITAL PUBLICATION

"THE CHARETTE, SUMMER 2022"

aaf
southwest
florida

At the 2023 local American Advertising Awards, hosted by the AAF-SWFL (American Advertising Federation - Southwest Florida), Studio+ was recognized for its creative capabilities beyond architecture. Joy Brownworth and Brianna Quiggle, the creators behind The Charette, won three awards for our Summer Issue.



The American Advertising Awards is the industry's largest and most representative competition, attracting more than 35,000 entries annually in local AAF Ad Club competitions. The American Advertising Awards aims to recognize and reward the creative spirit of excellence in the art of advertising. Conducted annually by the AAF, the local tier of the American Advertising Awards is

the first of a three-tier national competition. Concurrently, across the country, local entrants vie to receive an ADDY Award—recognition as the very best in their markets. Selection of the most creative entry in each category is affected by a scoring process in which a panel of judges evaluates all creative dimensions of every entry. A Gold ADDY recognizes the highest level of creative excellence and is considered superior to all other entries in the category.



AWARDS

- ▶ Gold ADDY | Digital Publication
- ▶ Best of Digital/Online/Interactive
- ▶ Judge's Choice Award

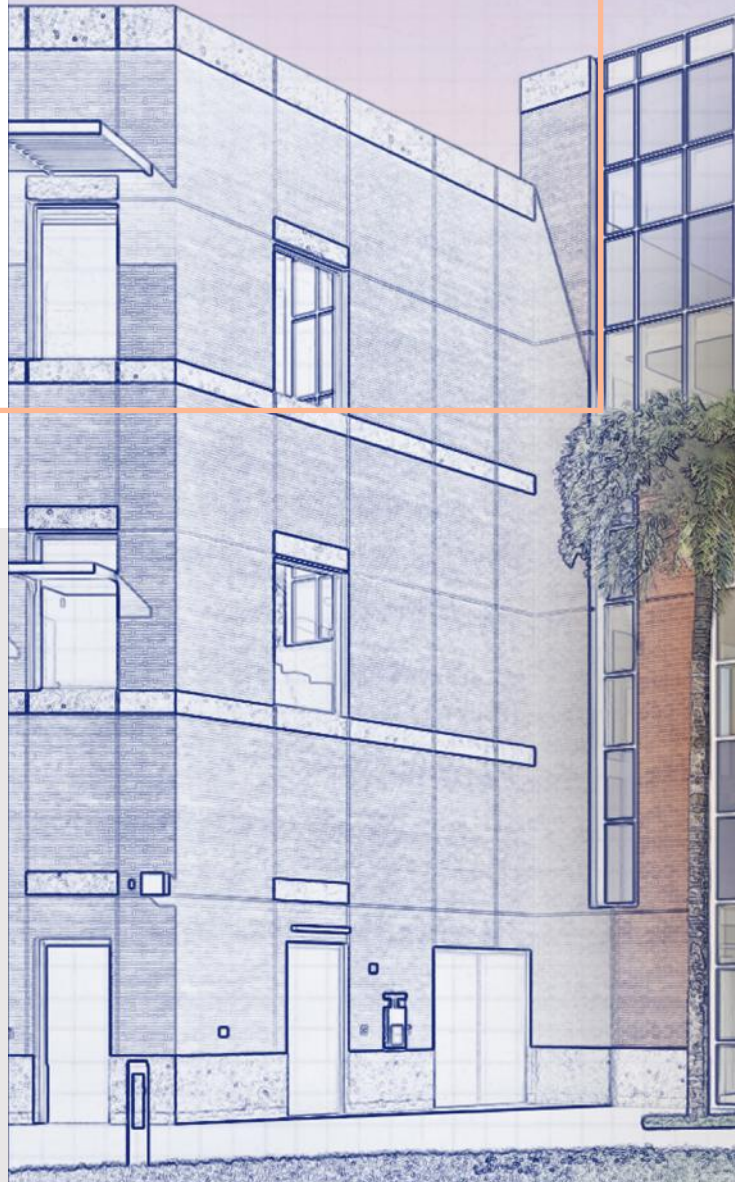
from industry to education: the evolution of a city through higher education

A look into the history behind South Gate
California's future educational center for Los
Angeles Community College District.

Written by Taylor Dupree Brewington

An architectural project is more than a building

It is impossible to separate a community from its history. The culture and direction of every community is governed by equal parts of its history and what it aspires to become. South Gate, California is no different. We approached our recent work for the Los Angeles Community College District at the South Gate Educational Center with that in mind—it was an opportunity for an educational investment for the future of South Gate, but also a chance to reflect on the history of the city and the project site.





1927—1980

A bright future for the city of South Gate

Nearly a century ago, Firestone Tire opened their first manufacturing facility outside of Ohio in a newly incorporated city in southern California called South Gate. A famed Los Angeles architect, Claud Beelman, was hired to design an art deco masterpiece to celebrate Firestone's daring investment in this new city.¹ The facility was built on the appropriately named Firestone Boulevard.

¹ "Los Angeles Conservancy." Claud Beelman | Los Angeles Conservancy

1927–1980 continued



The company was rapidly rewarded. The aerospace and automotive industries in nearby Los Angeles grew rapidly. Firestone's plant grew as well—expanding four times between 1929 and 1955. Countless jobs were created for the surrounding community. By the time of its final expansion, Los Angeles County was the second largest producer of rubber in the continental United States.

But times change, and so do cities. The South Gate plant closed in 1980.

1980–2017 A seventeen-acre concern for the community

Though the plant was closed, the four buildings remained vacated memories of a more prosperous time. Underneath the surface of the site, however, problems were growing. Beneath the four buildings, mass production of rubber created high levels of toxicity in the earth. Though the buildings were enviable for their high design, they would remain vacant for years due to concerns of the environmental effects on human health and well-being.

The property eventually switched hands, and by 2008, a study was organized to investigate the site to determine its potential for future development. As the team tore through the earth, they discovered that the more they dug, the more they found. The site was filled with a network of shafts and tunnels containing hazardous materials. Buildings were also deemed too outdated or unfit for occupancy. By the end of the study, buildings #1, 3, and 4 would all be demolished.

One thing was clear: any development of this site would require creativity and expertise.



“It is important to give the historically significant Firestone building #2 the respect it deserves.”

- Diran Depanian
Studio+ | Principal

2017—Today

A hopeful vision for a site with a significant history

2525 Firestone Boulevard in South Gate, California, is entering its third act. What was once a source of pride and employment—turned environmental hazard—is now returning to its origins and becoming a beacon of progress within the community.

The new project is bringing more than jobs—South Gate will be the home of Los Angeles County’s newest college campus, bringing a variety of jobs and, even more importantly, a platform to educate and equip the surrounding community for academic and economic success.

The goal was to develop an East Los Angeles College satellite campus within the South Gate community. In the spring of 2017, a design-bid-build team was selected to begin strategizing how exactly to utilize this storied yet troubled property. This campus—the South Gate Education Center—would provide both higher educational opportunities to locals and new careers in various fields in a traditionally underserved community.²



The planned campus is significant in size and scope and is seen by many as a flagship project for this community. With over 105,000 square feet of designed space and a planned \$92 million in construction cost, this project will eventually host 3,000 students while creating jobs in various fields. But in navigating through this project, two obstacles were clear:

1. The presence of volatile organic compounds (VOC)
2. The architectural historicity of the remaining Firestone Tire Building #2³

The historic Firestone building will go untouched for the time being, and instead, a campus is being planned around the outside perimeter of Building #2. The surrounding campus, while not directly mimetic of the art deco stylings of the 1920s, is still being designed with intentionality. Studio+ principal Diran Depanian states, “it is important to give the historically significant Firestone building #2 the respect it deserves.”



The South Gate Education Center will create a perimeter around the historic Firestone Building #2. (Photo on right from the LA Conservancy. Rendering on left provided by Studio+)

2 “Los Angeles Times.” Four-Year Degrees | Los Angeles Times

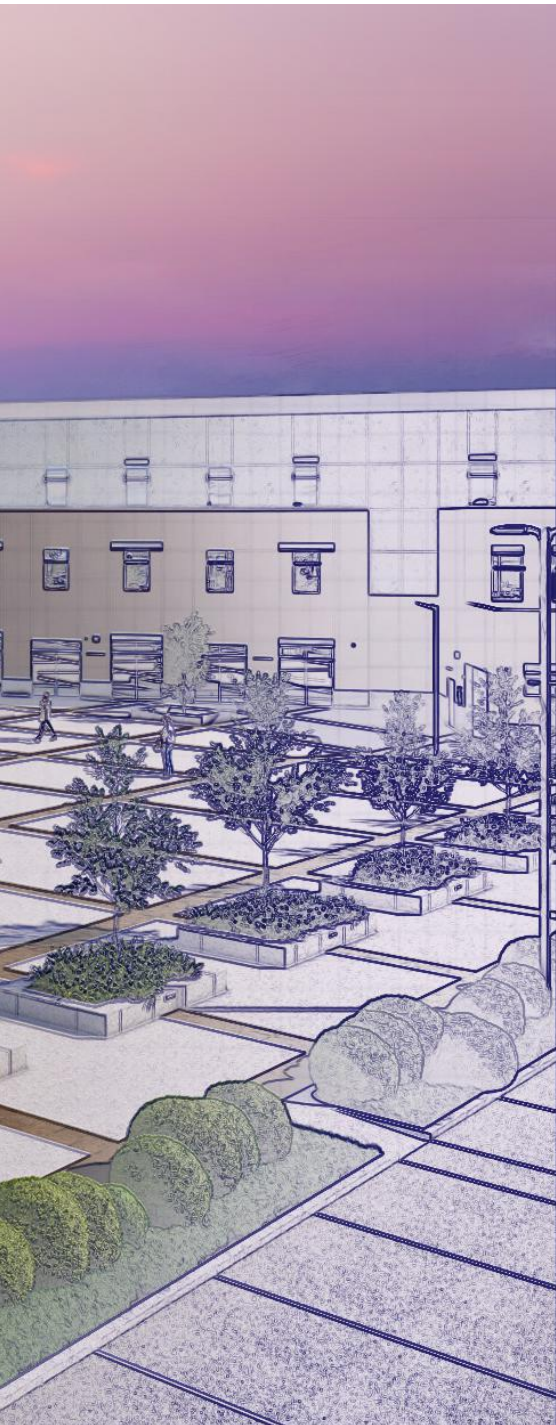
3 “Los Angeles Conservancy.” Firestone Tire and Rubber Plant | Los Angeles Conservancy

2017—Today continued

A “building pad” will lift the project above the site. This pad allows the design-bid-build team to begin work while environmental mitigation crews continue their work on the site. The building’s foundation will be wrapped in mitigating material to prevent volatile organic compounds from infiltrating the building. Should any gas from the

earth penetrate the building, a ventilation system will divert the VOCs and release them above the roof and away from occupants. Biofiltration and bioswales are being incorporated to treat water. The environmentally sustainable elements are being incorporated with the goal of obtaining LEED certification.





Conclusion

The South Gate Education Center will include classrooms, wet labs, student services, a library, an architecture studio, a music room, an auditorium, and more that will all serve the community of South Gate to promote significant economic and educational growth.

AUTHOR

Taylor Dupree Brewington is a writer and researcher focused primarily on subjects that express creativity and promote wellness. He frequently collaborates with industry experts to create compelling, publishable work in a variety of fields.

ASSOCIATIONS THAT CAN FURTHER YOUR CAREER IN HEALTHCARE

Healthcare is a rapidly growing industry that requires skilled professionals and innovative thinkers. For those looking to advance their career in healthcare or healthcare architecture, there are a plethora of organizations that offer resources, education, and networking opportunities. With so many options available, it can be difficult to determine which organizations will provide the most value. In this article, we will explore the top 5 organizations that are dedicated to advancing careers in healthcare and healthcare architecture. Whether you're a seasoned professional or just starting out, these organizations can provide the tools and connections needed to take your career to the next level.

ACHA

American College of Healthcare Architects

Studio+ Members: Ramon Cruz & Carlos Marcet

The American College of Healthcare Architects (ACHA) is a prestigious organization that brings together architects, healthcare professionals, and other experts in the field to advance the design and construction of healthcare facilities. Joining ACHA has numerous benefits for professionals in the healthcare architecture industry, including access to resources, networking opportunities, and professional development.

Achieving ACHA certification is a rigorous process requiring an application process of an architect's portfolio. Once approved, the architect must pass a 100-question eligibility exam testing the architect's knowledge of healthcare design, construction, and operations. The architect must also meet certain experience and education requirements outlined by the ACHA.

So, if you are an architect interested in pursuing ACHA certification, be prepared to invest significant time and effort in the application process, and be sure to stay current on the latest developments in healthcare design and construction.

To the general public, prospective and existing clients, recruiters, and peers, ACHA certification demonstrates specialization. When presenting design solutions, a credentialed architect's communication carries weight; people are more inclined to trust your advice and vision.

Carlos Marcet, AIA, ACHA, NCARB, LEED AP
Sr. Healthcare Architect
Studio+





AIA | AAH

American Institute of Architects & Academy of Architecture for Health

The AIA is the leading professional organization for architects in the United States, and its AAH division is focused specifically on healthcare architecture. The AAH provides its members with access to a wealth of resources, including educational programs, research, publications, and networking opportunities. The organization also hosts an annual conference that brings together healthcare architects and other professionals to discuss the latest trends and issues in the field. Along with having access to a community of healthcare professionals, being part of AAH can provide several benefits, including:

ADVOCACY AND POLICY INFLUENCE: AAH advocates for policies that support high-quality healthcare design and can provide a platform for members to influence public policy related to healthcare design.

PROFESSIONAL RECOGNITION AND AWARDS: AAH offers a range of awards and recognition programs, which can help members showcase their work and gain exposure in the industry. Also, AAH memberships demonstrate a commitment to the field, and a dedication to high standards of practice.

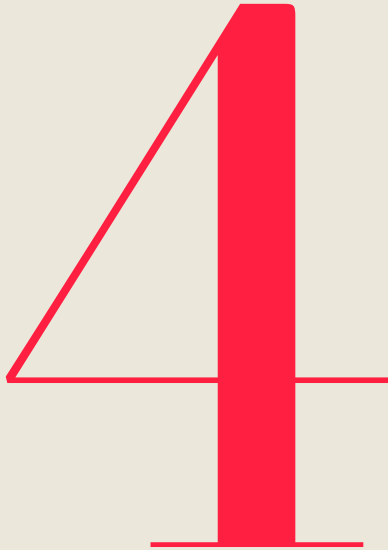
ASHE

American Society for Healthcare Engineering

ASHE is a professional organization for healthcare facility managers and engineers, but it also welcomes architects who are interested in healthcare design. The organization offers a variety of resources for its members, including educational programs, certification programs, and networking events. ASHE also publishes a magazine called Health Facilities Management that covers the latest news and trends in healthcare design and construction.

Unlike the other associations, ASHE is a specialized association that focuses on healthcare engineering and facility management. **If you work in this field**, joining ASHE can help you connect with other professionals who share your interests and challenges.





ACHE

American College of Healthcare Executives

Studio+ Member: Vanessa Tyler

The American College of Healthcare Executives (ACHE) is the premier professional society for healthcare leaders. If you are a healthcare executive or aspiring to be one, joining ACHE can offer you numerous benefits that can help you succeed in your career. Apart from networking opportunities and professional development, ACHE offers additional benefits including:

CAREER ADVANCEMENT: ACHE offers a job board that is exclusively available to its members. You can find job postings from leading healthcare organizations and advance your career by applying to these positions.

INDUSTRY RECOGNITION: ACHE offers various awards and recognition programs to its members. These programs can help you establish yourself as a leader in the healthcare industry and enhance your professional reputation.

ACCESS TO INDUSTRY EXPERTS: ACHE offers its members access to healthcare leaders and experts through its events, webinars, and publications. You can learn from their experiences and gain insights into the latest trends and best practices in the industry.

NETWORKING OPPORTUNITIES: ACHE offers its members a chance to network with other healthcare professionals. You can meet and connect with people who share your interests, discuss industry trends, and collaborate on projects.

PROFESSIONAL DEVELOPMENT: ACHE provides its members with access to various educational resources such as webinars, online courses, and publications. These resources can help you stay current on the latest trends in the healthcare industry and develop your skills.



WIH

Women in Healthcare

Studio+ Member: Vanessa Tyler

Women in Healthcare is a professional organization dedicated to supporting and advancing women in the healthcare industry. Here are a few reasons why someone might consider joining:

- 1. Networking:** Women in Healthcare provides a valuable opportunity to connect with other professionals in the industry, build relationships, and exchange knowledge and ideas.
- 2. Professional development:** The organization offers a range of programs and events designed to help members enhance their skills, stay up-to-date on the latest trends and best practices, and advance their careers.
- 3. Mentorship:** Women in Healthcare has a robust mentorship program, which pairs members with experienced mentors who can provide guidance and support as they navigate their careers.
- 4. Advocacy:** The organization is committed to advocating for women in healthcare, promoting gender equity, and supporting initiatives that promote diversity and inclusion in the industry.
- 5. Community:** Joining Women in Healthcare provides members with a sense of community and belonging, and allows them to connect with other like-minded individuals who are passionate about advancing women in healthcare.

Joining Women in Healthcare is typically a straightforward process. Membership requirements may vary depending on the local chapter or region, but individuals interested in joining can typically complete an application online or at a local event.

Two years ago, I joined forces with five remarkable women to establish the WIH Florida Chapter, which we officially incorporated in January 2022. Being a part of Women in Healthcare has opened up countless opportunities for me, including access to national education and mentorship resources, as well as the chance to connect with some of the most passionate women in the industry. As we are still in the early stages of our chapter's growth, everything feels new and exciting, and there are endless opportunities for making valuable connections.

Vanessa Tyler, ASID, NCIDQ
Brand Ambassador | Studio+
Treasurer | WIH Florida Chapter



FIND OUT MORE



1 **ACHA**
American College of Healthcare Architects



2 **AIA | AAH**
American Institute of Architects &
Academy of Architecture for Health



3 **ASHE**
American Society for
Healthcare Engineering



4 **ACHE**
American College of Healthcare Executives



5 **WIH**
Women in Healthcare

FIND OUT MORE

embracing **IDENTITY**

A Black Female Architect's Journey
and Advice for Aspiring Architects



As we close on celebrating Black History Month, it is essential to recognize the contributions of black women of color within the field of architecture. Historically, the architecture industry has been male-dominated, and women of color have faced significant obstacles in pursuing a career in this field. However, despite these challenges, black women architects have made remarkable contributions to the built environment, breaking barriers, and paving the way for future generations.

As we delve into these experiences, we are proud to highlight one of our very own employees, Rachel Hunter, a senior leader, architect, and project manager in our Studio+ Tampa office. Read up on how she highlights some of her achievements while navigating the industry and shed light on the importance of diversity and representation in the field of architecture.

“**If you can see it, you can be it.**”

Rachel Hunter

How has your racial and gender identity influenced your career path in architecture, and what role has it played in your professional growth and development?

OI identify as African American. Although I am composed of many ethnicities, I am self-aware and realize that my skin and hair present first. I am also aware that as a black woman in Architecture and, more recently, a Black Female Registered Architect, I am among a small group of peers in this industry. Ironically, I seldom think about my differences when I show up to do my job, whether with a General Contractor, Subcontractor, Consultant, Owner, End User, or my colleagues. I was raised by a strong black female who instilled in my siblings

and me the self-confidence to feel that we belonged in any room and empowered us to pursue whatever career excited us. Seeing someone that looked like me was unimportant. Instead, my drive, passion for design, and the support of my friends, family, and colleagues pushed me through life's most challenging times: the great recession, my failed exams, and complex project management scenarios. All these life events have made me become who I am today, a successful Project Manager and Registered Architect.

Q How can the architecture industry better support and promote diversity and inclusion, particularly for Black women and other underrepresented groups?

A colleague said recently, “If you can see it, you can be it.” It is critical for so many to see themselves in others in their chosen field. In a profession where one is taught to design around the human form and to embrace and understand the diversity of nature, one must embrace the diversity of our world in hiring and promotion. Engaging Black girls and women in STEM and design projects and initiatives brings much-needed diversity

into the built environment. I love that Studio+ hosts young people in STEM at Work events to involve youth, and often youth of color, in the design conversation. These events show them that their voice is needed and wanted! I look forward to engaging with young people and underrepresented groups to help them see that the profession of Architecture is an option for everyone.

“be relentless in your pursuit

Rachel Hunter

What advice would you give to young Black women who aspire to pursue a career in architecture, given the challenges you have faced?

My advice would be to be relentless in your pursuit. It may not be the straight line that you expect, but you will get where you want to go if you keep focused on being surrounded by architecture and design. In my mind, my first job out of college was supposed to be with an architecture firm, but when I graduated, there were no openings. I accepted a position as an Architectural Resident Engineer for The Department of Veterans Affairs and

was surrounded by great design every day. I learned much about construction, problem solving, specifications, and talking to owners, contractors, and engineers. Those three years of experience still help me to this day and were a great foundation for my next job as a Project Manager. If you arm yourself with experience, knowledge, expertise, and some humility, you will find your way!

“you only fail if you stop trying.
every failure is an opportunity to
learn and improve.”

Rachel Hunter

Q What support systems or resources have you found helpful in navigating the unique challenges faced by Black women in architecture?

There are great organizations like NOMA (National Organization of Minority Architects) and AIA WIA (Women in Architecture) that host panels and events focused on engaging and encouraging underrepresented groups in our industry to excel and reach for success at the highest levels. They are great resources. Building a support system of cheerleaders is important. Surround yourself with people supporting your vision and dreams, whether a

friend or mentor. They will keep you going when you don't think you can. If you are studying or taking exams, find forums to see how others succeeded in similar circumstances. You don't have to blaze a trail if others have done it. You can learn from the successes and failures of others. And on the topic of failure, you only fail if you stop trying. Every failure is an opportunity to learn and improve!

A

the facts

Women only make up **less than 25% of U.S. architects**, their numbers are growing but not at the rate to break even anytime in the near future. Beyond that, **only .5% of U.S. architects are Black or African American women**. This is the lowest percentage of representation based on combined race and gender, following behind White women 18.9%, Asian women 2.6%, Hispanic or Latino women 1.7%, and Another Group women 1.2%. ¹ +



for the classroom perimeter

⊖ Written by Steve Bull

When Seconds Count: Why Effective Emergency Communication Systems are a School's Best Defense

In the last two issues of The Charette, we discussed the outermost layers of school security: "Campus Perimeter" and "Building Perimeter." Now, we shift our focus to the final layer, the "Classroom Perimeter" itself. First and foremost, all layers of school security must be designed and installed "seamlessly" to ensure the sys-

tem works together to provide a solid and secure barrier. Schools should first conduct a risk assessment and security audit utilizing CPTED Principals to adequately identify all potential hazards to an existing facility before moving forward into the design of each level of security.

POLICIES AND PROCEDURES

Districts should work with first responders, law enforcement, and the design team to establish the proper procedures for proper access control. Teachers and students should be instructed to the procedures set in place and thus documented in a complete Emergency Procedure Manual. Shelter doors should be reviewed in classrooms as well as larger assembly spaces such as the gymnasium, cafeteria, library, auditoriums, and administrative spaces. First and foremost, shelter doors should be closed and locked during classroom hours and the policies and procedures should be designed to accommodate this concept.



VISIBILITY

Each classroom should be designed so that occupants can shelter in place out of the “line of sight” from outside the classroom. Designated locations (“hard corners”) within each classroom should be planned so that intruders outside the space cannot identify targets inside. Entry doors should have narrow lights limiting the overall visibility during lockdown. Blinds can be manually drawn as soon as the classroom is notified of potential danger. Minimum 14mm thick security film can also be installed on entry door lights so that an attacker has limited visibility. Exterior windows below 6’ in height should be retrofitted with similar opaque film limiting the ability to target students and teachers from the playground or street frontage.



COMMUNICATIONS

Public address systems in compliance with NFPA 72 are one of the most critical elements of classroom safety and should be installed whenever possible to quickly notify occupants of an emergency so they can prepare for lockdown. A 2-way intercom function allowing central locations to communicate with specific classrooms and individuals should be considered. Outside phone systems should be set up within each occupied space with excessive codes removed to minimize the complexity of calling 911 quickly. Continued ►



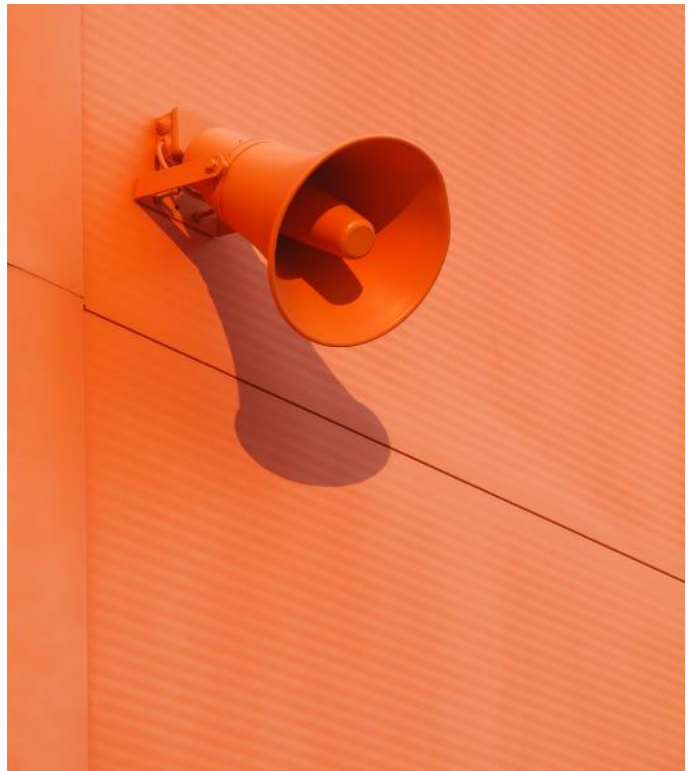
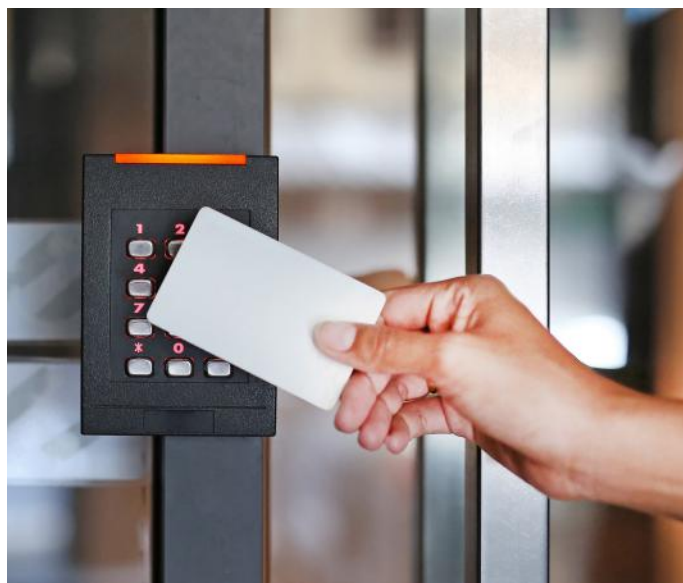
COMMUNICATIONS CONT.

A local 2-way radio system should be set up so that administrators can communicate with teachers and staff located in outdoor play areas as well as classrooms during an emergency. Commercial radios should be used in lieu of recreational “off-the-shelf” products. If available, 2-way radio systems should be made available District-wide. Duress systems (“panic alarms”) are a quick way for classrooms to alert others quickly and should be utilized together with the 2-way radios so that administration can further notify the specifics to others.

Since 2012, In-Building Emergency Communication Systems (1-way) became required in all schools for not only fire but any hazard affecting a school. As a result, public address speakers are now a part of the infrastructure in most school spaces and can be utilized for other systems. In-Building Communications should be tied into the District-wide mass notification system.

During an emergency, it may become necessary for outside law enforcement to communicate with individual spaces away from the administrative offices, and 2-way intercoms can be configured to receive these outside calls.

Emergency communications are most effective when they can be broadcasted through multiple avenues. Mobile applications and social media are extremely cost-effective tools to broadcast to the public. The use of recorded video and live broadcasts can notify the public and give instructions outside the campus perimeter to assist in the evacuation process.



ACCESS CONTROL

Access control has a multitude of mechanical and electronic options, but the primary goal is to easily and quickly lock off the classroom from the interior, whether it be by an administrator or student while maintaining the ability to egress in case of a fire. In addition, locks should have an indicator to allow the occupant to clearly determine whether the lock is engaged. Some access control manufacturers now make retrofit kits for older buildings since existing classroom doors are rarely electrified. Whatever the case, all doors should comply with the local building codes and should be reviewed prior to specifying.

Mechanical locks should be keyed and accessible on the corridor side for quick access by law enforcement by means of an office entrance, storeroom, classroom lockset and/or exit device as required by your local code. Fobs can be distributed to teachers and students or only teachers. In the later scenario, teachers can be pulled away when children arrive after the system is engaged. Electric locks can be controlled with either an adjacent fob or remote system. Similar to mechanical locks, electronic locks should have the capability of visual indicator allowing the occupants to see whether the lock is properly engaged. Networked electronic locks are triggered either remotely or by a teacher within the classroom. Some locks can even be programmed to send a signal to a command center locking off a larger portion of building.

VIDEO SURVEILLANCE

Video surveillance can be utilized to assess critical situations and provide warning before the emergency. It can also provide critical data during a critical situation. There are several different operational uses of surveillance equipment including and categorized by its overall clarity:

1. Detection

The ability to **determine** if there is a person or object in the field of view

2. Recognition

The ability to **differentiate** people or objects in the field of view

3. Identification

The ability to **identify** specific individuals or objects

Prior to selecting products, a design team should assess the programmatic use of each piece of equipment to ensure that the product can meet the requirement. Fixed cameras should be placed in common areas, vestibules, and lobby areas as well as any space that students congregate regularly (cafeterias, gymnasiums, libraries, theatres, and common areas). Lobby area surveillance can be paired with remote locks to screen potential visitors. Potential loitering areas should be monitored as well (entrances to toilets, stairwells, etc). +



Author



Steve Bull is a registered architect with over 26 years of experience and serves as Principal in the Studio+ Orange County office. With a passion for collaborative solutions, Steve manages complex project teams within various disciplines, and remains focused on the future generation's well-being in the educational environment.

PROJECTS ON THE RISE

recently awarded projects.



BREA OLINDA UNIFIED SCHOOL DISTRICT

Campus Fencing - 9 Schools

Studio+ will design the perimeter fencing, gates, and other site alterations as required to increase the level of control and security on campus. Design the entrance points to each campus and within administrative buildings when perimeter gates are locked. Maintain pedestrian circulation, and analyze fire access routes, and accessible paths of travel for each of the nine campuses.



NEWPORT MESA UNIFIED SCHOOL DISTRICT

Ensign Intermediate School Student Gathering Area

The outdoor student gathering area is currently being planned for Ensign Intermediate School. The approved conceptual design includes landscaping surrounded by brick and concrete seating walls in the center of the campus, allowing students a new option for gathering for lunch, nutrition breaks, or socializing.



NEWPORT MESA UNIFIED SCHOOL DISTRICT

Newport Harbor Aquatics

A remodel of the aquatics complex, including installing shade structures, replacing bleachers, adding sports lighting, and relocating the scoreboard. The additional phase is in the preliminary scoping stage and may include pool plaster and deck repairs, remodeling of locker rooms, restrooms, showers, and coaches offices.

NORTHROP GRUMMAN
AEROSPACE

AHU Replacement

Scope of work shall include design and engineering to provide working drawings for the replacement of existing air handler at the roof of Building 200.

NORTHROP GRUMMAN
AEROSPACE

Process Cooling Design

Design and engineering for the Process Cooling for the Shaker and the Thermal Chamber in the High Bay Area of Building 200 in Los Angeles.

NORTHROP GRUMMAN
AEROSPACE

Chiller Replacement

Scope of work shall include design and engineering to provide working drawings for replacement of the existing chiller serving building 200.

ST. JOHN SENIOR PROPERTIES The Greens at St. John

New construction senior living facility offering Assisted Living and Memory Care. The project is approximately 87,000 square feet with assorted amenities and a full-service kitchen.

WILDCAT SENIOR LIVING Cane Bay Plantation at Wildcat Circle

The Wildcat Senior Living community is designed to care for residents in all stages of aging, including independent living, assisted living, and memory care. The entire campus includes 150 units across three buildings totaling to 137,000 square feet of interior space.

NCH HEALTHCARE SYSTEM Critical Care Unit

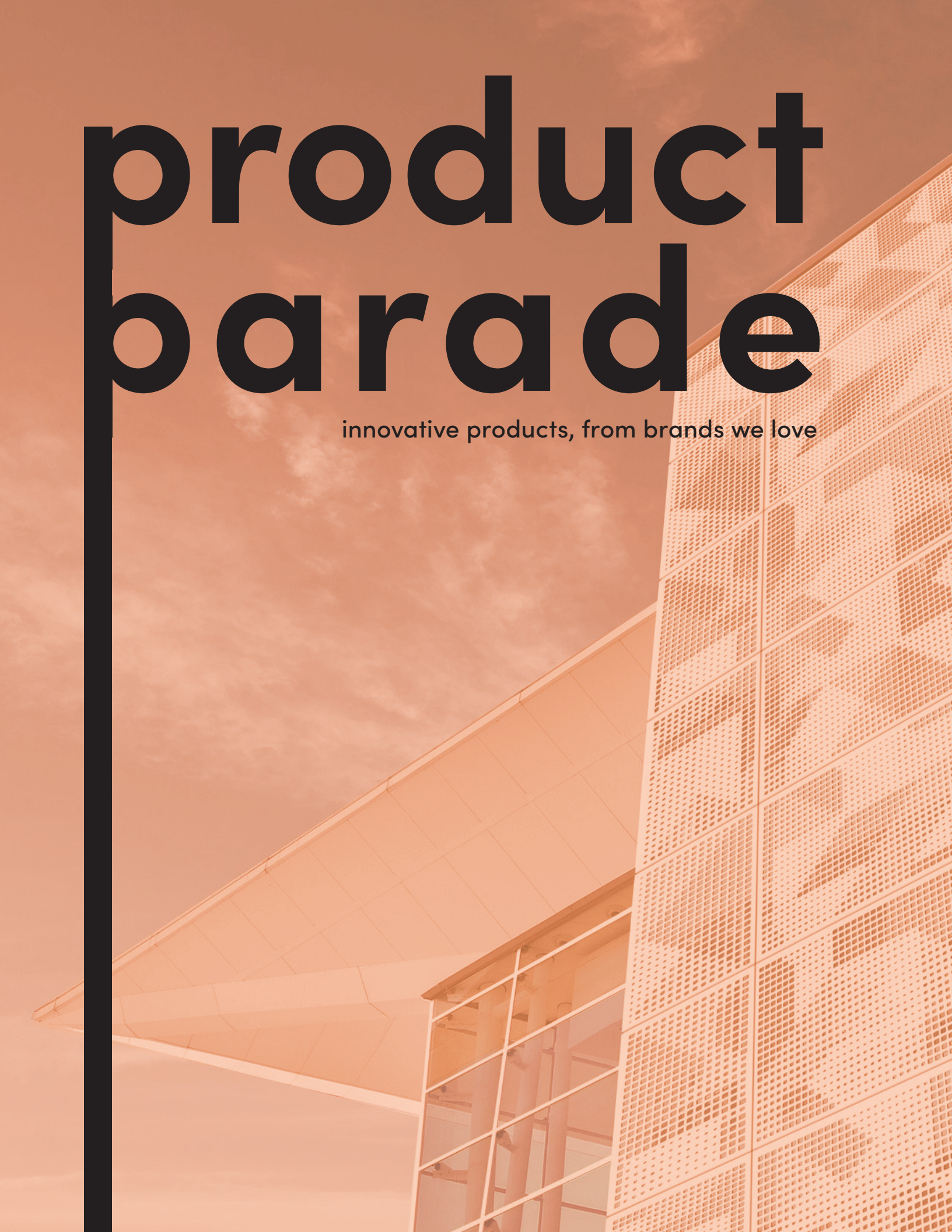
New critical care unit at the NCH Baker Downtown Hospital in Naples, FL. Studio+ converted the existing 3rd Floor ICU Suites into a newly upgraded ICU/CCU stepdown suite. During which the existing units will be combined into one new patient care unit providing better efficiency and flow.

TOPPING OFF

projects approaching
completion.

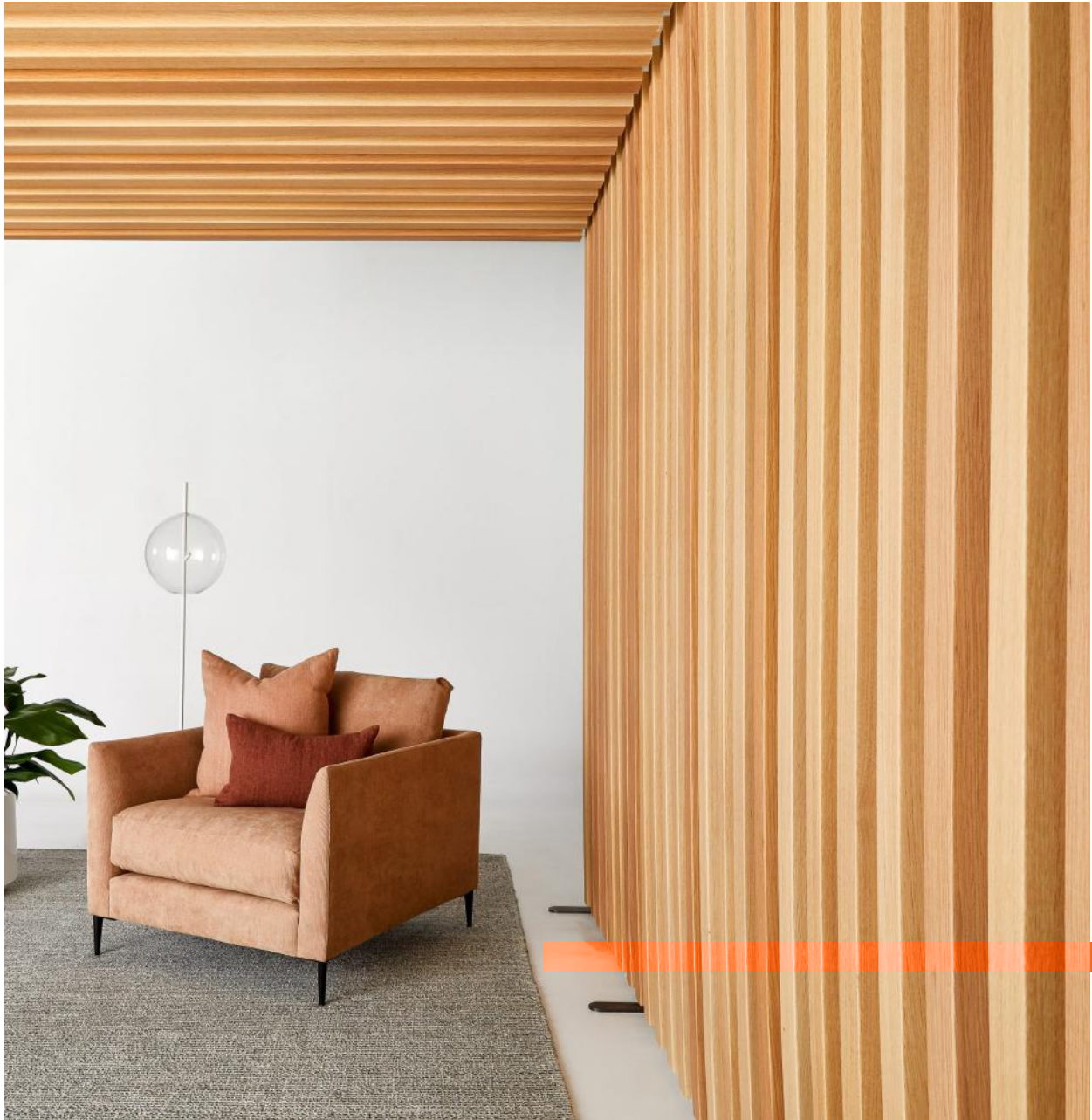
product parade

innovative products, from brands we love





Acoustic Timber™



The Acoustic Timber range celebrates the richness and diversity of timbers used in interior spaces, while providing a high level of acoustic performance, all in one product.



Natural timber-look acoustic products

Available in panels, baffles, or ceiling tiles, Acoustic Timber™ is a **high-performance acoustic treatment** designed to realistically imitate timber. To ensure a natural, high-end finish, we have hand-picked a selection of premium woodgrains taken from real timber veneers—digitally printed onto the panel surface with a safe, water-based, UV cured ink.



representative contact

-
Katie Ciani | katie@autexacoustics.com
autexacoustics.com



Architectural Metals Reimagined: A Pattern Exploration

Drawing from the ever-changing state of our surroundings, Móz's newest collection—Metals in Motion—examines patterns derived from natural elements like sand dunes, wind, and the jungle, as well as inspiration from our digital and built environment with nods to technology and flight. While each design captures dynamic motion within a single panel, Móz offers designers the rare opportunity to match patterns across multiple panels for a large-scale wow factor. The striking new offerings speak to Móz's unique development and fabrication capabilities in the metals industry—the patterns offer a diverse metal material suitable for columns, walls, ceilings, and partitions for interior and exterior solutions alike.



representative contact

-

Heather Gropp | heather@mozdesigns.com
mozdesigns.com

Metals in Motion



Móz Designs' latest collection draws from the dynamic movement of our natural and built environments.

Milliken Coastline



Where the land meets the sea to offer a natural boundary and beautiful breathing space. An area of rugged resilience and uncompromising beauty. Remote depths of maritime colour and rich, rippling textures appear as the rugged shoreline meets the splendour of the coastal cliffs and a new journey begins.



Coast-To-Coast Goes Wall-To-Wall

The Coastline collection was inspired by natural transitions of land and water – ocean waves, sandy beaches, grassy marshes and rocky cliffs. Whether you want a relaxed atmosphere or vibrant energy, these subtle gradients will allow you to create spaces that organically connect and flow. The modular system makes it easy to **define spaces and incorporate wayfinding**. Two distinct patterns, six neutrals and twelve colors offer ample diversity. Explore a variety of natural gradients as well as random layouts to achieve your design vision.

Coastline is manufactured with WellBAC® Comfort cushion backing, and is certified NSF-140 Gold with 47.9% pre-consumer recycled content by total product weight. Coastline is also available with our NSF-140 Platinum backing option. All Milliken modular carpets carry Environmental Product Declarations and Health Product Declarations, which contribute to LEED certification. Additionally, Milliken modular carpets carry Declare® transparency labels and comply with the Red List Imperative of the Living Building Challenge.™



contact information

Hank Israel | Hank.Israel@Milliken.com
millikenfloors.com





**culture
breeds
UNITY**



Leading Ladies

Leading Ladies: Celebrating the Promotions of Three Exceptional Women

We are thrilled to announce the promotions of three exceptional women at Studio+ who have recently been promoted to associate and senior associate positions. These talented professionals have demonstrated their commitment to excellence, leadership, and innovation in their respective fields, earning the recognition they richly deserve.

“All three of them drive the same emotion in me. They embody everything that makes Studio+ awesome. They are fearless and confident professionals. They take extreme ownership in everything that they do. They are true team members, understanding when to lead and when to support. But most importantly, they are amazing people that you get excited to work with every single day.”

- Mike Lendino, CFO



Molly Dyal

BIM Manager | Senior Associate

Firstly, we are proud to announce the promotion of our BIM Manager, Molly Dyal, who has been instrumental in leading the development and implementation of our firm's BIM strategy. Her expertise in leveraging technology to enhance collaboration, improve project delivery, and increase efficiency has been invaluable, and we are confident that her leadership will continue to drive our firm forward.

ng ladies



Tara Thompson

Director of Finance and Operations |
Senior Associate

Secondly, we are delighted to promote our Director of Finance and Operations, Tara Thompson, who has been an essential member of our leadership team. Her strategic vision, financial acumen, and operational expertise have been instrumental in driving growth and ensuring the financial health of our firm. We are confident that her contributions as a senior associate will continue to support the success of our firm and our clients.

Chandler Hilton

Project Architect | Associate

Lastly, we are excited to promote one of our accomplished project architects, Chandler Hilton, who has a proven track record of designing and delivering exceptional projects that exceed client expectations. Her creativity, attention to detail, and passion for architecture have earned her a reputation as a trusted advisor to clients and a mentor to her peers. We look forward to seeing her continued success as an associate.



studio+ hosts

STEM AT WORK DAY

for east lee county high school students

Last month, Studio+ hosted a STEM at Work Day for high school students at East Lee County High School. The event was designed to give the students hands-on experience in science, technology, engineering, and

math and expose them to potential careers in architecture and design. Studio+ immersed the students in a real-world activity in designing and constructing a full-scale 3-D mockup of tiny homes from cardboard.



THE BRIEF



The students were then split into three teams and tasked with designing their tiny home for a fictional client, Vin Webb, an 18-year-old college student who recently aged out of the foster care system requiring a space to support the next chapter of his life. Vin Webb wanted a tiny home that could support some of his hobbies: cooking, gardening, studying for school, and hanging with friends. The judging criteria was based on innovation, functionality, and reuse of wasted cardboard.

DESIGN & CONSTRUCTION

The teams set to work immediately, brainstorming ideas and sketching their designs. Each group was assigned a specific area of the warehouse and was given access to various tools and materials, including cardboard, spray paint, tape, staging accessories, floor tiles, and more. Studio+ team members circulated the room, offering guidance and code-related advice but ultimately, the real magic was happening in the minds of the students.

As the deadline approached, the teams raced to finish their tiny homes. They added finishing touches, like windows, paint-accented walls/doors, and some decorative features. Each tiny home was unique, with its design and character. The judging panel of Studio+ architects and sponsors evaluated each tiny home based on innovation, functionality, and reuse of wasted cardboard.

students built loft beds to maximize space





sliding doors eliminated
the space needed for
doors to swing



adding some color!



TEAM 1



TEAM 2



TEAM 3





custom planters for the client's herb garden

TIMES UP

In the end, the winning team blew the judges away with their innovative use of cardboard and attention to detail. They designed their tiny homes to maximize space, with loft-style beds, storage that doubled as seating, sliding doors and curtains that eliminated the need for doors to swing. The students' thoughtful design solutions, like the planters for produce, showed their commitment to creating a space that was not only sustainable but also met the specific needs of their client, Vin Webb. Talk about attention to detail and innovation!

Overall, the STEM at Work Day was a huge success, and the students left feeling inspired and excited about architecture and design. Who knows, maybe one day we'll see some of these talented kids designing the buildings of the future. +



THANK YOU TO OUR SPONSORS



We couldn't have pulled off this amazing event without the help of our awesome sponsors: NERI, B & I Contractors Inc., Mannington Commercial, Waltbillig & Hood, SESCO Lighting, and Chick-fil-A. Thank you so much for your support!

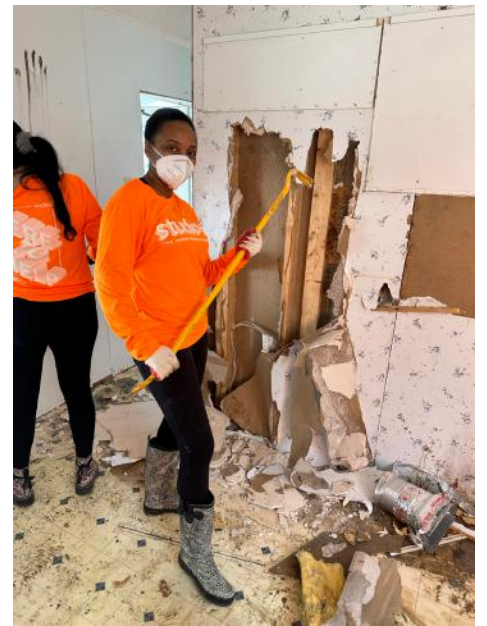
studio+



**DESIGNING A
DIFFERENCE
& BUILDING
COMMUNITY**

Our volunteer efforts have extended into the new year, and we recently teamed up with P.E.R.T. (Patriot Emergency Response Team) to assist a community member in Fort Myers Beach. The homeowner's residence was completely submerged during Hurricane Ian in September of last year, and since then, the home had remained untouched.

Our Studio+ team and DRMP collaborated to clear the home of all furniture, appliances, flooring, drywall, and insulation.



We were covered in dust and debris, but we felt like superheroes, just without the capes. The homeowner expressed immense gratitude, which left us feeling fulfilled and energized, ready for our next mission.

stay in the know with our newsletter on upcoming volunteer opportunities.
sign-up by emailing us at marketing@wearestudioplus.com



THE CHARENTE

studio+

the charente | studio+ quarterly
edition 4
spring 2023

email us to subscribe
marketing@wearestudioplus.com

www.wearestudioplus.com