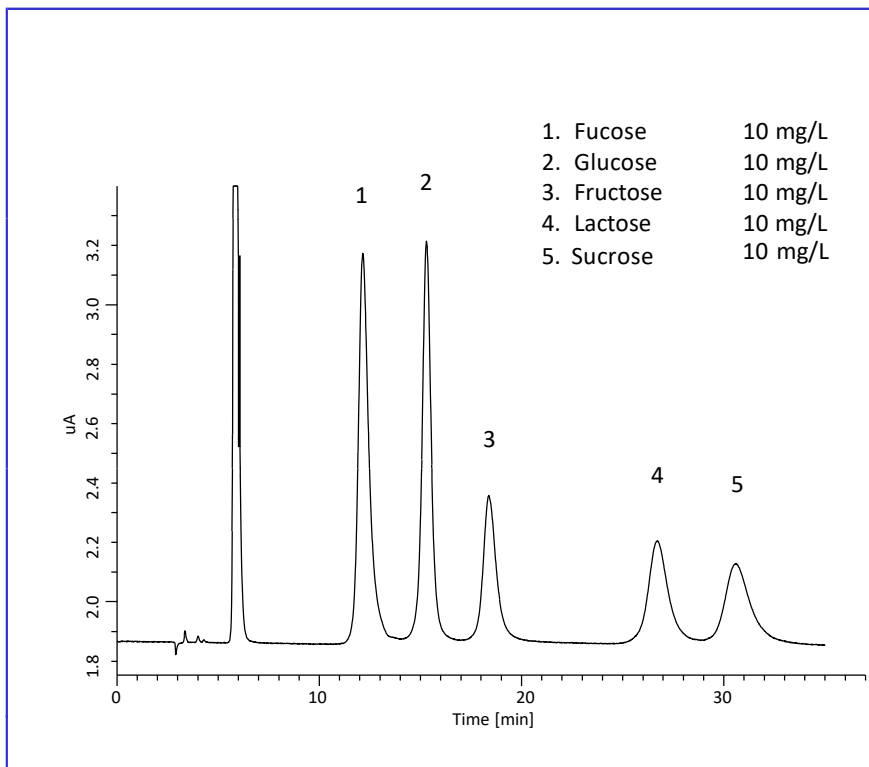


Highly Sensitive and Simple Method for Sugar Analysis Using HPLC-ECD

There are several methods to analyze sugar by HPLC. Our previous notes showed an HPLC method using fluorescence detector coupled with post-column derivatization (No. 6) and that using RI detector (No. 91).

In this note, sugar was detected with electrochemical detector (ECD). Sensitivity of this method was comparable to that of fluorescence detection although derivatization is not necessary. (C. Aoyama)

A chromatogram obtained from standard solution

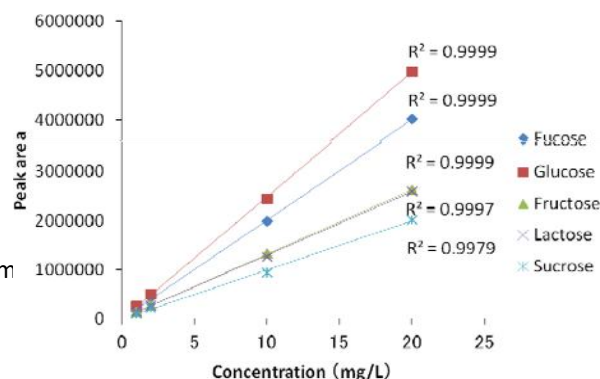


Conditions

System	: LC800 system with ECD
Column	: InertSphere Sugar-1 (5 μ m, 150 \times 4.6 mm I.D.)
Eluent Flow rate	: 100 mM NaOH*
Col.	: 0.5 mL/min
Temp.	: 25 $^{\circ}$ C
Detection	: ECD Pulse Mode (ED723, Gold)
	E1: 150 mV t1: 600 ms
	E2: -1500 mV t2: 50 ms
	E3: 600 mV t3: 50 ms
	E4: -200 mV t4: 100 ms
	ts: 50 ms
Inj. Volume	: 10 μ L

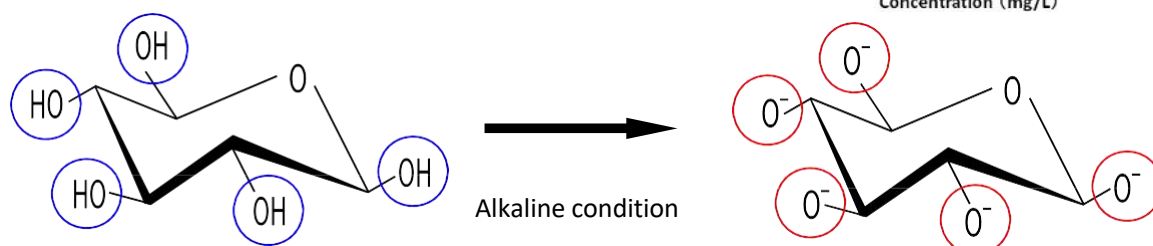
* Eluent was stored in a polypropylene bottle with CO₂ trap cartridge.

Calibration Curves



How are sugars separated in this method?

Sugars are ionized under strong alkaline condition. Therefore, sugars can be retained and separated on anion-exchange column using alkaline aqueous solution as mobile phase.



Detection of sugar in HPLC

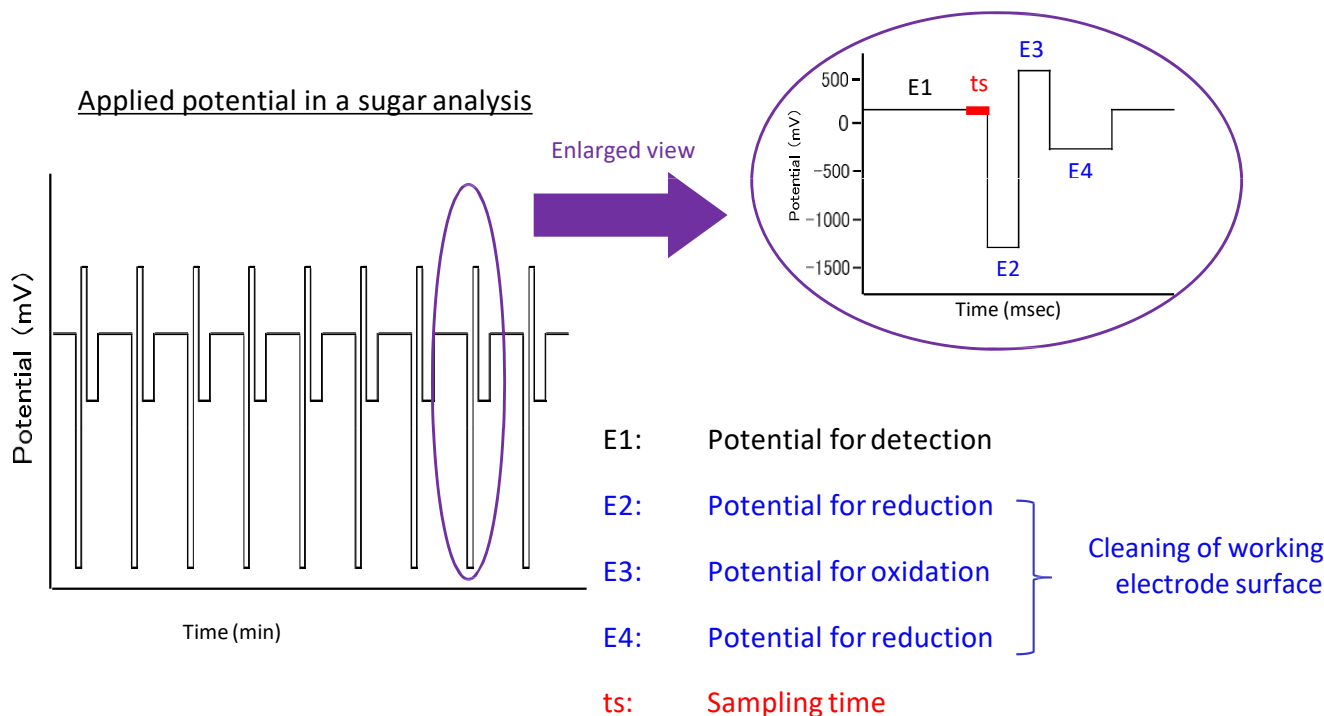
Sugars cannot be detected using UV or fluorescence detector without derivatization because sugars do not possess chromophore, such as double bond or benzene ring, in their structure. On the other hand, sugar analysis using electrochemical detector (ECD) does not require any derivatization because sugars are detected by oxidation of carbohydrates on a working electrode surface and monitoring the resulting current. The sensitivity is approximately 1000-fold higher than that of refractive index (RI) detector, which can also detect sugars without derivatization. ECD has major advantages in sugar analysis.

Detector	Sensitivity (approx.)	Cautions
Electrochemical detector(ECD)	10 ng	Standard HPLC pump and autosampler can be used if materials for their wetted parts are alkali-resistant.
Fluorescence detector (FL, coupled with post-column derivatization)	10 ng	Additional pump and reaction unit are required for derivatization.
Refractive index detector (RI)	10 μg	Gradient elution cannot be carried out.
Evaporative light scattering detector (ELSD)	1 μg	Non-volatile agents cannot be performed, and calibration curve is not linear.

Cleaning of electrode surface and pulsed-amperometric detection mode

In sugar analysis using ECD, oxidized analyte is adsorbed to the working electrode surface. It is necessary to remove analyte bound to the surface because it may diminish the sensitivity.

ED723 can be used with not only dynamic current mode (DC), in which constant potential is applied throughout an analysis, but also pulsed-amperometric detection mode (PAD). For example, potential program shown below is applied periodically. Analytes bound to working electrode surface is removed by applying strong reduction and oxidation potential after each time current is measured. Surface of working electrode can be maintained in good condition by applying PAD mode.



HPLC column for sugar analysis, InertSphere Sugar-1

Cat.No. 5020-11001

- InertSphere Sugar-1 is an anion-exchange column packed with polymer particles. Quaternary ammonium group is chemically bonded.
- Oligosaccharides and sugar phosphates also can be retained and separated with use of gradient elution.
- InertSphere Sugar-1 can be washed with methanol .
- Cartridge guard column is also available.

GL Sciences disclaims any and all responsibility for any injury or damage which may be caused by this data directly or indirectly. We reserve the right to amend this information or data at any time and without any prior announcement.

GL Sciences, Inc. Japan

22-1 Nishishinjuku 6-Chome
Shinjuku-ku, Tokyo,
163-1130, Japan
Phone: +81-3-5323-6620
Fax: +81-3-5323-6621
Email: world@glsc.co.jp
Web: www.glsciences.com

GL Sciences B.V.

De Sleutel 9
5652 AS Eindhoven
The Netherlands
Phone: +31 (0)40 254 95 31
Email: info@glsciences.eu
Web: www.glsciences.eu

GL Sciences (ShangHai) Ltd.

Tower B, Room 2003,
Far East International Plaza,
NO,317 Xianxia Road,
Changning District.
Shanghai, China P.C. 200032
Phone: +86 (0)21-6278-2272
Email: contact@glsciences.com.cn
Web: www.glsciences.com.cn

GL Sciences, Inc. USA

4733 Torrance Blvd. Suite 255
Torrance, CA 90503
Phone: 310-265-4424
Fax: 310-265-4425
Email: info@glsciencesinc.com
Web: www.glsciencesinc.com

International Distributors

Visit our Website at:

<https://www.glsciences.com/company/distributor.html>