

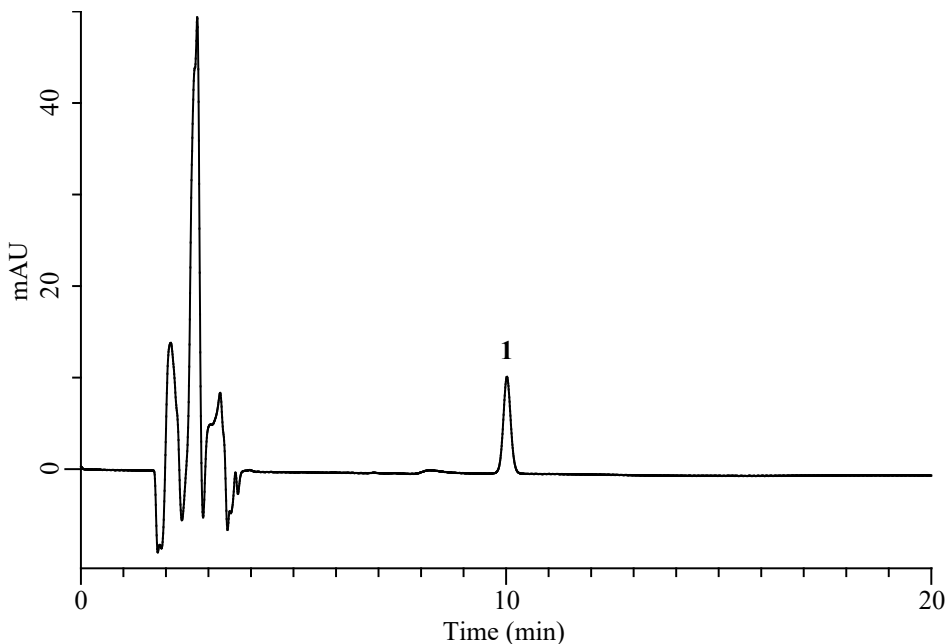
# InertSearch™ for LC

Inertsil® Applications

## Analysis of 1,3-Dicyclohexylurea

(Under the Condition of the draft for the Japanese Pharmacopoeia, Acetohexamide)

Data No. LB800-7111



### Conditions

**System** : Chromaster HPLC system (HITACHI)  
**Column** : InertSustain C18 (GL Sciences Inc.)  
(5  $\mu$  m, 250 x 4.6 mm I.D.)  
**Column Cat. No.** : 5020-07346  
**Eluent** : Solution\*  
**Flow Rate** : 1.0mL/min  
**Col. Temp.** : 25 °C  
**Detection** : UV 210 nm  
**Injection Vol.** : 50  $\mu$  L  
**Sample** : Standard

### Analyte:

1. 1,3-Dicyclohexylurea 5.7 mg/L

Theoretical plate number : 15,769 ( $\geq$  10,000)

RSD of the  
peak area (%) (n=6) : 0.26 ( $\leq$  2.0%)

\* Dissolve 0.5 g of sodium hydroxide in 1000 mL of 0.05 mol/L sodium dihydrogen phosphate reagent and adjust pH 6.5 with 0.5 mol/L sodium hydroxide reagent. Add 500 mL of acetonitrile to 500 mL of this solution.